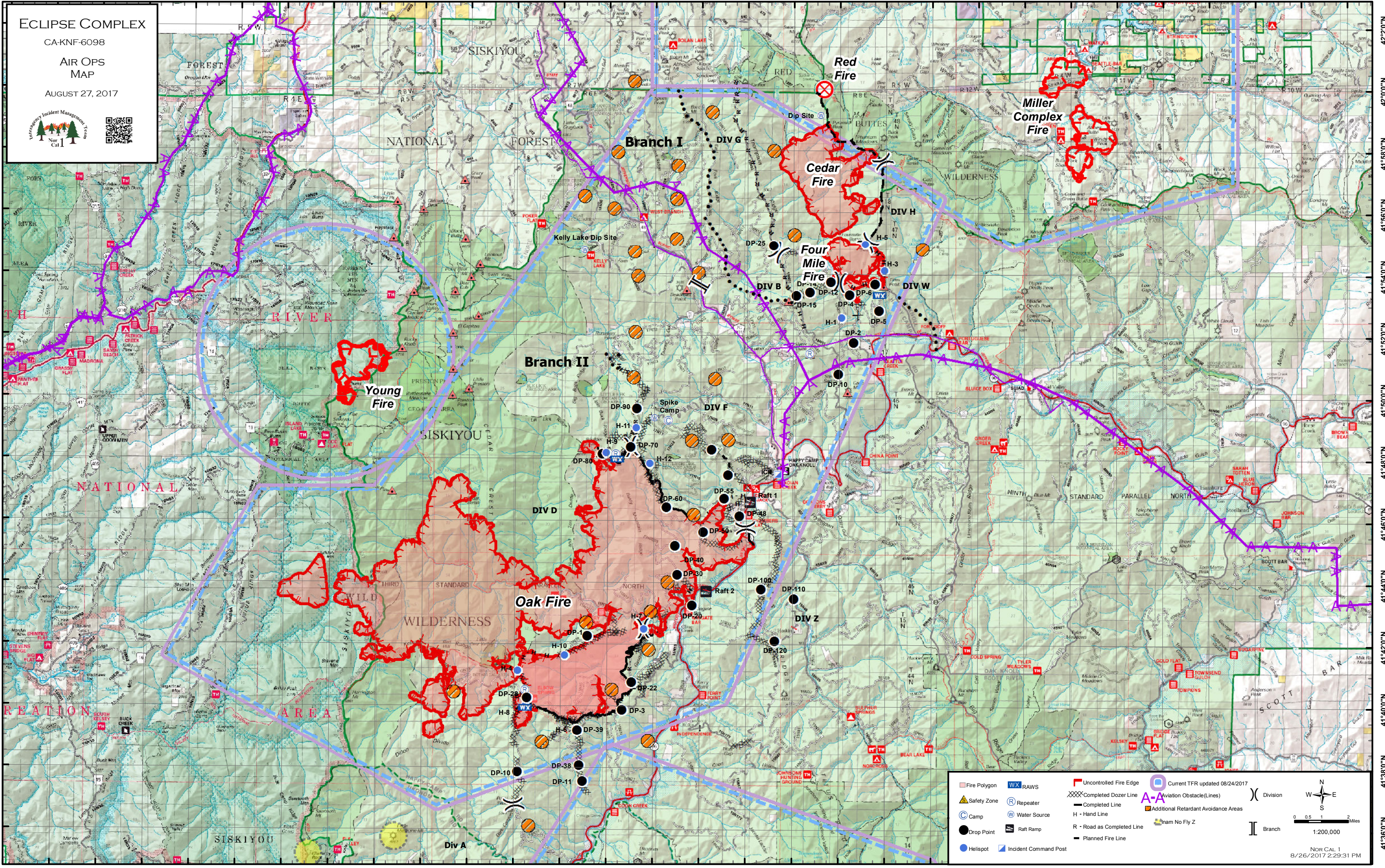


123°56'0"W 123°54'0"W 123°52'0"W 123°50'0"W 123°48'0"W 123°46'0"W 123°44'0"W 123°42'0"W 123°40'0"W 123°38'0"W 123°36'0"W 123°34'0"W 123°32'0"W 123°30'0"W 123°28'0"W 123°26'0"W 123°24'0"W 123°22'0"W 123°20'0"W 123°18'0"W 123°16'0"W 123°14'0"W 123°12'0"W 123°10'0"W 123°8'0"W 123°6'0"W 123°4'0"W 123°2'0"W 123°0'0"W 122°58'0"W

42°20'0"N  
42°0'0"N  
41°58'0"N  
41°56'0"N  
41°54'0"N  
41°52'0"N  
41°50'0"N  
41°48'0"N  
41°46'0"N  
41°44'0"N  
41°42'0"N  
41°40'0"N  
41°38'0"N  
41°36'0"N

**ECLIPSE COMPLEX**  
CA-KNF-6098  
**AIR OPS**  
**MAP**  
AUGUST 27, 2017



Fire Polygon	RAWs	Uncontrolled Fire Edge	Current TFR updated 08/24/2017
Safety Zone	Repeater	Completed Dozer Line	Aviation Obstacle(Lines)
Camp	Water Source	Completed Line	Additional Retardant Avoidance Areas
Drop Point	Raft Ramp	Road as Completed Line	Inam No Fly Z
Hellsport	Incident Command Post	Planned Fire Line	Division
			Branch

0 0.5 1 2 Miles  
 1:200,000  
 NOR CAL 1  
 8/26/2017 2:29:31 PM

123°56'0"W 123°54'0"W 123°52'0"W 123°50'0"W 123°48'0"W 123°46'0"W 123°44'0"W 123°42'0"W 123°40'0"W 123°38'0"W 123°36'0"W 123°34'0"W 123°32'0"W 123°30'0"W 123°28'0"W 123°26'0"W 123°24'0"W 123°22'0"W 123°20'0"W 123°18'0"W 123°16'0"W 123°14'0"W 123°12'0"W 123°10'0"W 123°8'0"W 123°6'0"W 123°4'0"W 123°2'0"W 123°0'0"W 122°58'0"W