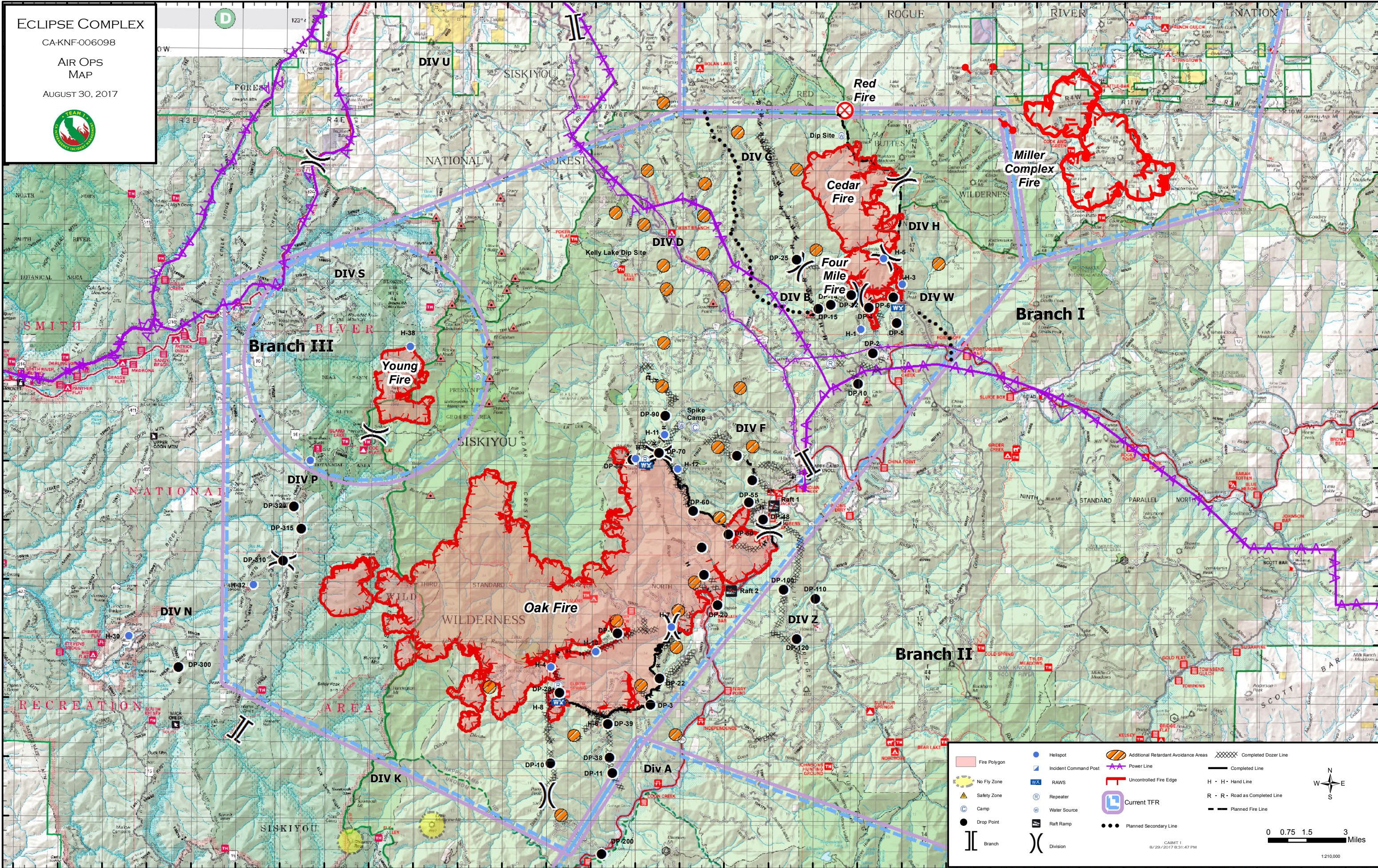


ECLIPSE COMPLEX

CA-KNF-006098

AIR OPS
MAP

AUGUST 30, 2017



Fire Polygon	Helispot	Additional Retardant Avoidance Areas	Completed Dozer Line
No Fly Zone	RAWs	Power Line	Completed Line
Safety Zone	Repeater	Uncontrolled Fire Edge	H - H - Hand Line
Camp	Water Source	Current TFR	R - R - Road as Completed Line
Drop Point	Raft Ramp	Planned Secondary Line	Planned Fire Line
Branch	Division		

0 0.75 1.5 3 Miles

CAIMT 1
8/29/2017 8:31:47 PM

1210000

Name of Location	Latitude	Longitude	Comment
Bald Mtn RAWS	41° 48.023'N	123° 29.602'W	
KNF91 RAWS	41° 40.048'N	123° 33.547'W	
Raft 1	41° 46.657'N	123° 23.847'W	
Raft 2	41° 43.788'N	123° 25.747'W	
DP-1	41° 42.34'N	123° 30.853'W	
DP-2	41° 51.855'N	123° 19.397'W	
DP-3	41° 39.945'N	123° 29.347'W	
DP-4	41° 53.393'N	123° 19.575'W	
DP-5	41° 52.882'N	123° 18.32'W	
DP-6	41° 53.751'N	123° 18.489'W	
DP-10	41° 37.928'N	123° 33.838'W	
DP-12	41° 53.814'N	123° 20.393'W	
DP-14	41° 53.482'N	123° 21.296'W	
DP-15	41° 53.365'N	123° 21.878'W	
DP-20	41° 43.336'N	123° 26.342'W	
DP-22	41° 40.845'N	123° 28.955'W	
DP-25	41° 55.002'N	123° 22.87'W	
DP-28	41° 40.331'N	123° 33.451'W	
DP-30	41° 44.339'N	123° 26.981'W	
DP-34	41° 50.833'N	123° 20.069'W	
DP-38	41° 38.143'N	123° 31.179'W	
DP-39	41° 39.285'N	123° 31.269'W	
DP-40	41° 45.258'N	123° 27.089'W	
DP-48	41° 46.223'N	123° 24.318'W	
DP-50	41° 45.71'N	123° 25.886'W	
DP-55	41° 46.795'N	123° 24.977'W	
DP-57	41° 47.557'N	123° 24.804'W	
DP-60	41° 46.499'N	123° 27.481'W	
DP-62	41° 48.38'N	123° 25.521'W	
DP-70	41° 48.459'N	123° 29.026'W	
DP-80	41° 48.228'N	123° 30.25'W	
DP-90	41° 49.71'N	123° 28.763'W	
DP-100	41° 43.863'N	123° 23.382'W	
DP-110	41° 43.553'N	123° 21.949'W	
DP-120	41° 42.184'N	123° 22.785'W	
DP-200	41° 34.882'N	123° 31.508'W	
DP-300	41° 41.103'N	123° 50.632'W	
DP-310	41° 44.722'N	123° 45.978'W	
DP-315	41° 45.805'N	123° 45.158'W	
DP-320	41° 46.557'N	123° 45.512'W	
East Fire	41° 57.492'N	123° 22.047'W	
Four Mile	41° 54.77'N	123° 19.562'W	
H-1	41° 52.663'N	123° 19.927'W	Type 2 Roadside, Dust abate
H-3	41° 54.19'N	123° 18.078'W	Type 2 Razor Ridge , Dust abate
H-4	41° 41.202'N	123° 33.860'W	
H-5	41° 55.049'N	123° 18.918'W	Type 3 Razor Ridge
H-6	41° 39.337'N	123° 31.319'W	
H-7	41° 42.563'N	123° 28.417'W	
H-8	41° 40.056'N	123° 33.526'W	
H-9	41° 48.276'N	123° 30.084'W	Type 2 Roadside, Saddle, Dust abate
H-11	41° 49.078'N	123° 28.779'W	Type 2 Dust abate, oneway, 8500'
H-12	41° 47.929'N	123° 28.185'W	Type 3 Hover Hole, 4300'
H-30	41° 42.127'N	123° 52.888'W	
H-32	41° 43.903'N	123° 47.287'W	
H-35	41° 48.126'N	123° 44.77'W	
H-38	41° 52'N	123° 40.3'W	
Happy Camp Airport	41° 47.441'N	123° 23.337'W	
ICP	41° 47.594'N	123° 22.651'W	
Kelley Lake Dip Site	41° 54.815'N	123° 31.047'W	
Lower Bear Lake Dip Site	41° 42.066'N	123° 34.744'W	
No Name Dip Site	41° 59.207'N	123° 20.857'W	
Tim's Peak RAWS	41° 53.385'N	123° 18.283'W	
Raspberry Dip	41° 50.998'N	123° 37.219'W	
Sanger Dip	41° 54.109'N	123° 38.958'W	