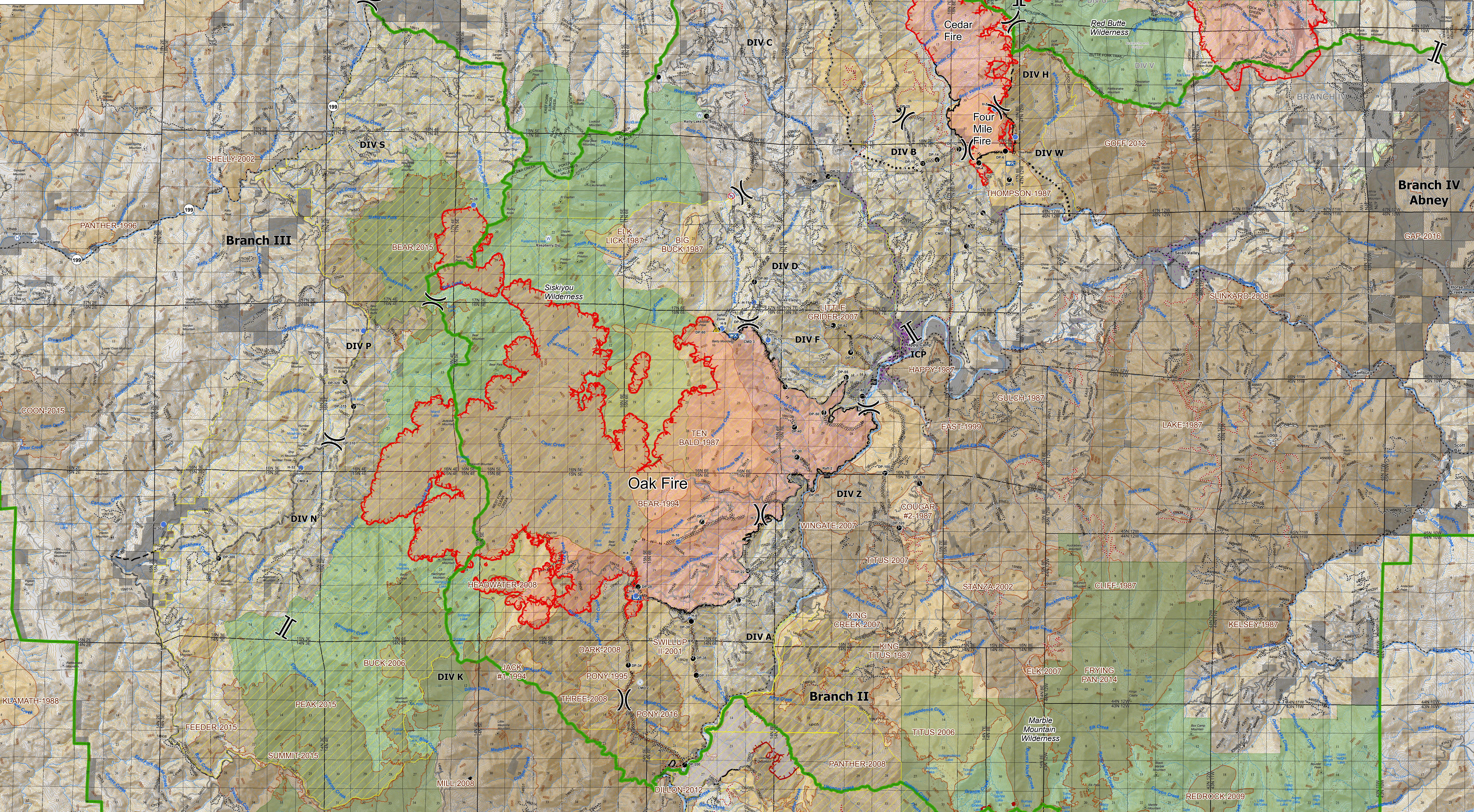


**Eclipse Complex
CA-KNF 006098
September 3, 2017
Operations
Day Shift**

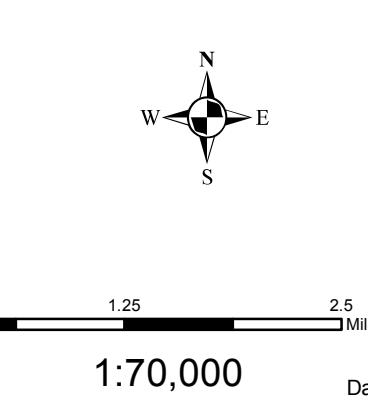


Oak Fire - 71,779 Acres
Cedar Fire - 8,605 Acres
As of 9/1/17 2307 PDT



Legend

Forest Service Administrative Boundary	2 - High Clearance	Fire Polygon	Incident Command Post	Power Line	R - R - R Road as Completed Line	Major Road	Ranger District Boundary	Division
Decommissioned (KNF)	1 - (Closed)	Uncontrolled Fire Edge	Camp	Planned Fire Line	Decommissioned (KNF)	Ownership Private	Fire History	Branch
Class 3, 4, 5 or Paved	0 - Not Maintained	Closure Areas Merge	Safety Zone	Completed Dozer Line	Class 3, 4, 5 or Paved	Wilderness		
Contract Units	Drop Point	Hand Line	Water Source	Planned Secondary Line	2 - High Clearance			
	Helispot	Proposed Dozer Line	Raft Landing	1 - (Closed)	1 - (Closed)			



1:70,000
Date: 9/3/2017
CAIMT 1

LOG-2014

WOOLEY-2005

HAYPRESS-2008