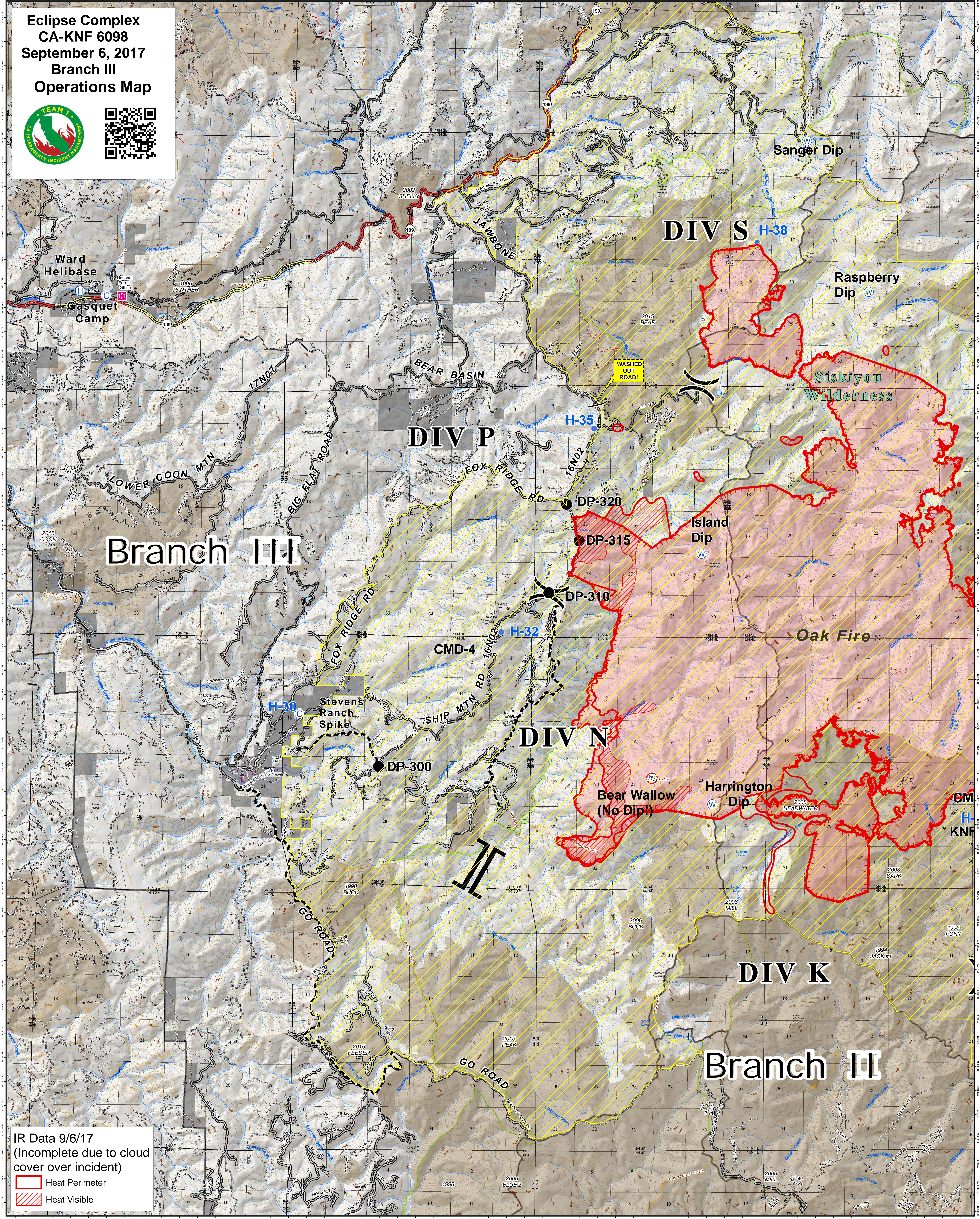
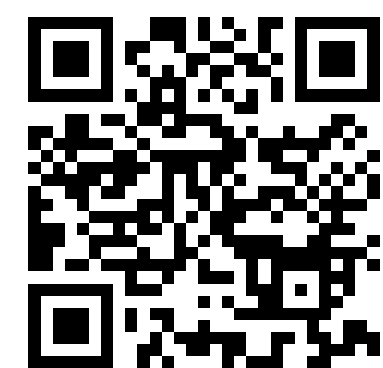


**Eclipse Complex
CA-KNF 6098
September 6, 2017
Branch III
Operations Map**



IR Data 9/6/17
(Incomplete due to cloud cover over incident)

- Heat Perimeter
- Heat Visible

- | | | | | | |
|--|--|--|---|--|--|
| Uncontrolled Fire Edge | FirePolygon | Drop Point | Highway | Road - Light Duty - Paved | Ownership Private |
| R · · R Road as Completed Line | Division | Helibase | Highway w/Median | Trail | Wilderness |
| Planned Fire Line | Branch | Helispot | Road - 4WD/Track | Decommissioned Road (SRF) | Forest Closure Area |
| Proposed Dozer Line | Repeater | Water Source | Road - Unimproved/Unpaved | Summit_GNIS | Structures |
| Geographic Feature | Camp | Restricted Water Source | Road - Light Duty - Gravel | Ranger District Boundary | * Washed Out Road |

