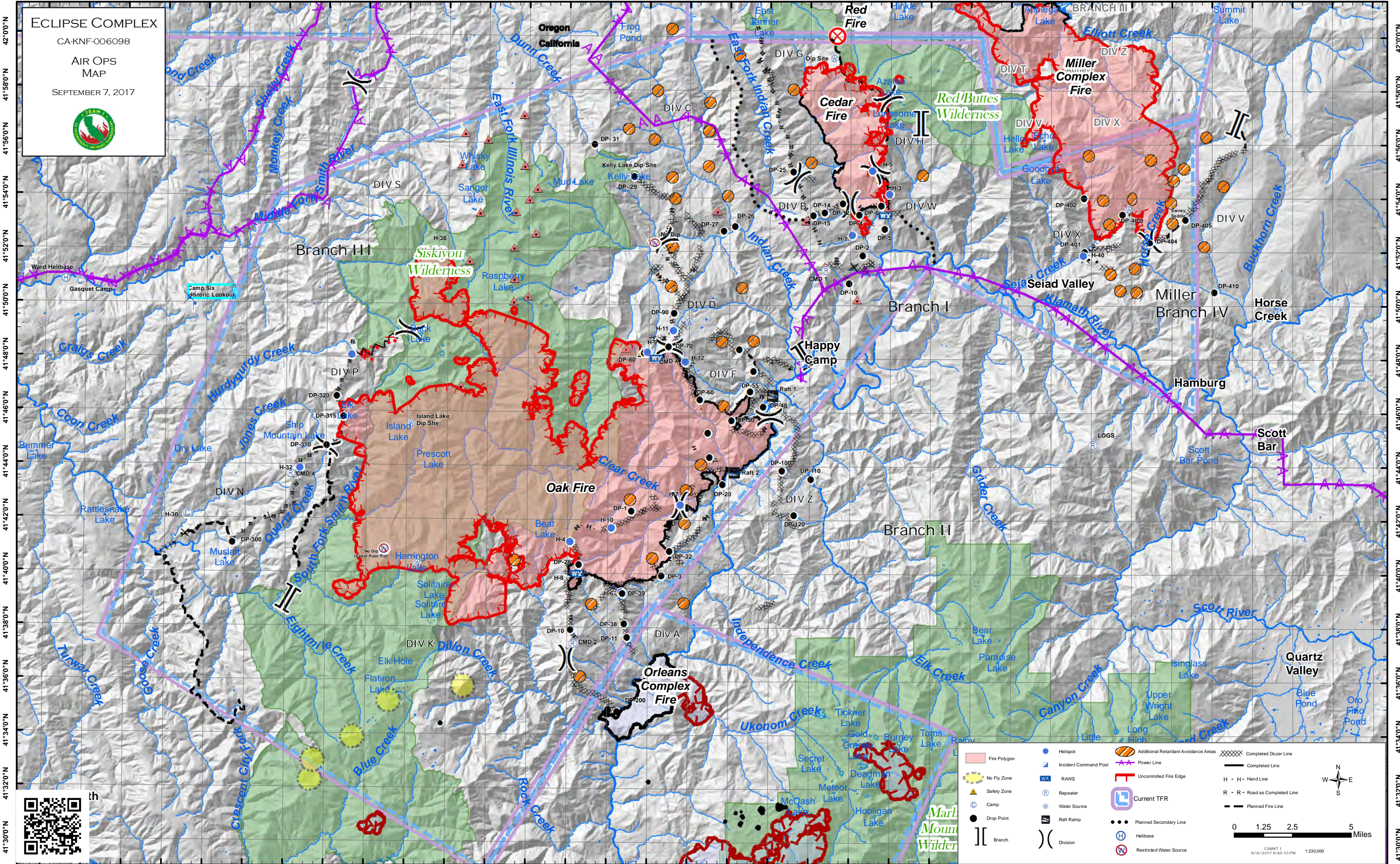


ECLIPSE COMPLEX
 CA-KNF-006098
 AIR OPS
 MAP
 SEPTEMBER 7, 2017

Fire Polygon	Helispot	Additional Retardant Avoidance Areas	Completed Dozer Line
No Fly Zone	Incident Command Post	Uncontrolled Fire Edge	Completed Line
Safety Zone	RAWS	Current TFR	H - H - Hand Line
Camp	Repeater	Planned Secondary Line	R - R - Road as Completed Line
Drop Point	Water Source	Helibase	Planned Fire Line
Branch	Raft Ramp	Restricted Water Source	
	Division		

0 1.25 2.5 5 Miles

CAMT 1
9/6/2017 9:43:10 PM 1:230,000

PointName	Lat	Long	Column1	PointName2	Lat2	Long4
Big Flat	41° 42.127' N	123° 52.888' W		DP-402	41° 54.043' N	123° 8.412' W
Raft 1	41° 46.657' N	123° 23.847' W		DP-403	41° 53.431' N	123° 6.484' W
Raft 2	41° 43.788' N	123° 25.747' W		DP-404	41° 52.375' N	123° 5.136' W
Bald Mtn RAWS	41° 48.051' N	123° 29.620' W		DP-405	41° 53.244' N	123° 3.356' W
Bear Butte	41° 48.126' N	123° 44.770' W		DP-410	41° 50.523' N	123° 1.931' W
Bear Wallows (No Dip!)	41° 40.907' N	123° 43.095' W		DP-48	41° 46.223' N	123° 24.318' W
CMD-1	41° 51.334' N	123° 21.216' W		DP-50	41° 45.710' N	123° 25.886' W
CMD-2	41° 37.405' N	123° 33.707' W		DP-55	41° 46.795' N	123° 24.977' W
CMD-3	41° 48.017' N	123° 29.605' W		DP-57	41° 47.557' N	123° 24.804' W
CMD-4	41° 43.687' N	123° 47.728' W		DP-6	41° 53.751' N	123° 18.489' W
Dip Site	41° 59.207' N	123° 20.857' W		DP-60	41° 46.499' N	123° 27.481' W
DP-1	41° 42.340' N	123° 30.853' W		DP-62	41° 48.380' N	123° 25.521' W
DP-10	41° 50.833' N	123° 20.069' W		DP-70	41° 48.459' N	123° 29.026' W
DP-100	41° 43.863' N	123° 23.382' W		DP-8	41° 52.882' N	123° 18.320' W
DP-11	41° 37.626' N	123° 31.046' W		DP-80	41° 48.228' N	123° 30.250' W
DP-110	41° 43.553' N	123° 21.949' W		DP-90	41° 49.710' N	123° 28.763' W
DP-12	41° 53.814' N	123° 20.393' W		Gasquet Camp	41° 50.777' N	123° 58.286' W
DP-120	41° 42.184' N	123° 22.785' W		H-1	41° 52.663' N	123° 19.927' W
DP-14	41° 53.482' N	123° 21.296' W		H-10	41° 41.718' N	123° 31.822' W
DP-15	41° 53.365' N	123° 21.878' W		H-11	41° 49.078' N	123° 28.779' W
DP-2	41° 51.855' N	123° 19.397' W		H-12	41° 47.929' N	123° 28.185' W
DP-20	41° 43.336' N	123° 26.342' W		H-3	41° 54.190' N	123° 18.078' W
DP-200	41° 34.882' N	123° 31.508' W		H-38	41° 52.000' N	123° 40.300' W
DP-22	41° 40.845' N	123° 28.955' W		H-4	41° 41.202' N	123° 33.860' W
DP-25	41° 55.002' N	123° 22.870' W		H-40	41° 51.888' N	123° 8.426' W
DP-26	41° 52.957' N	123° 25.762' W		H-5	41° 55.049' N	123° 18.918' W
DP-27	41° 52.787' N	123° 26.315' W		H-6	41° 39.337' N	123° 31.319' W
DP-28	41° 40.331' N	123° 33.451' W		H-7	41° 42.563' N	123° 28.417' W
DP-29	41° 54.787' N	123° 30.767' W		H-8	41° 40.056' N	123° 33.526' W
DP-3	41° 39.945' N	123° 29.347' W		H-9	41° 48.276' N	123° 30.084' W
DP-30	41° 44.339' N	123° 26.981' W		Harrington Dip	41° 40.378' N	123° 41.431' W
DP-300	41° 41.103' N	123° 50.632' W		ICP	41° 47.834' N	123° 22.272' W
DP-31	41° 55.975' N	123° 32.762' W		Island Dip	41° 45.557' N	123° 41.787' W
DP-310	41° 44.722' N	123° 45.978' W		Kelly Lake Dip Site	41° 54.815' N	123° 31.047' W
DP-315	41° 45.805' N	123° 45.158' W		KNF91	41° 40.005' N	123° 33.517' W
DP-320	41° 46.557' N	123° 45.512' W		Logs	41° 44.854' N	123° 7.946' W
DP-34	41° 37.928' N	123° 33.838' W		Raspberry Dip	41° 50.998' N	123° 37.219' W
DP-38	41° 38.143' N	123° 31.179' W		Sanger Dip	41° 54.109' N	123° 38.958' W
DP-39	41° 39.285' N	123° 31.269' W		Ship Mtn	41° 43.903' N	123° 47.287' W
DP-4	41° 53.393' N	123° 19.575' W		Small Lake (Cable Hazard)	41° 52.334' N	123° 29.734' W
DP-40	41° 45.258' N	123° 27.089' W		Stevens Ranch Spike	41° 42.175' N	123° 52.829' W
DP-401	41° 52.012' N	123° 8.363' W		Ward Helibase	41° 50.867' N	123° 59.017' W
				Water Source	41° 49.392' N	123° 28.012' W