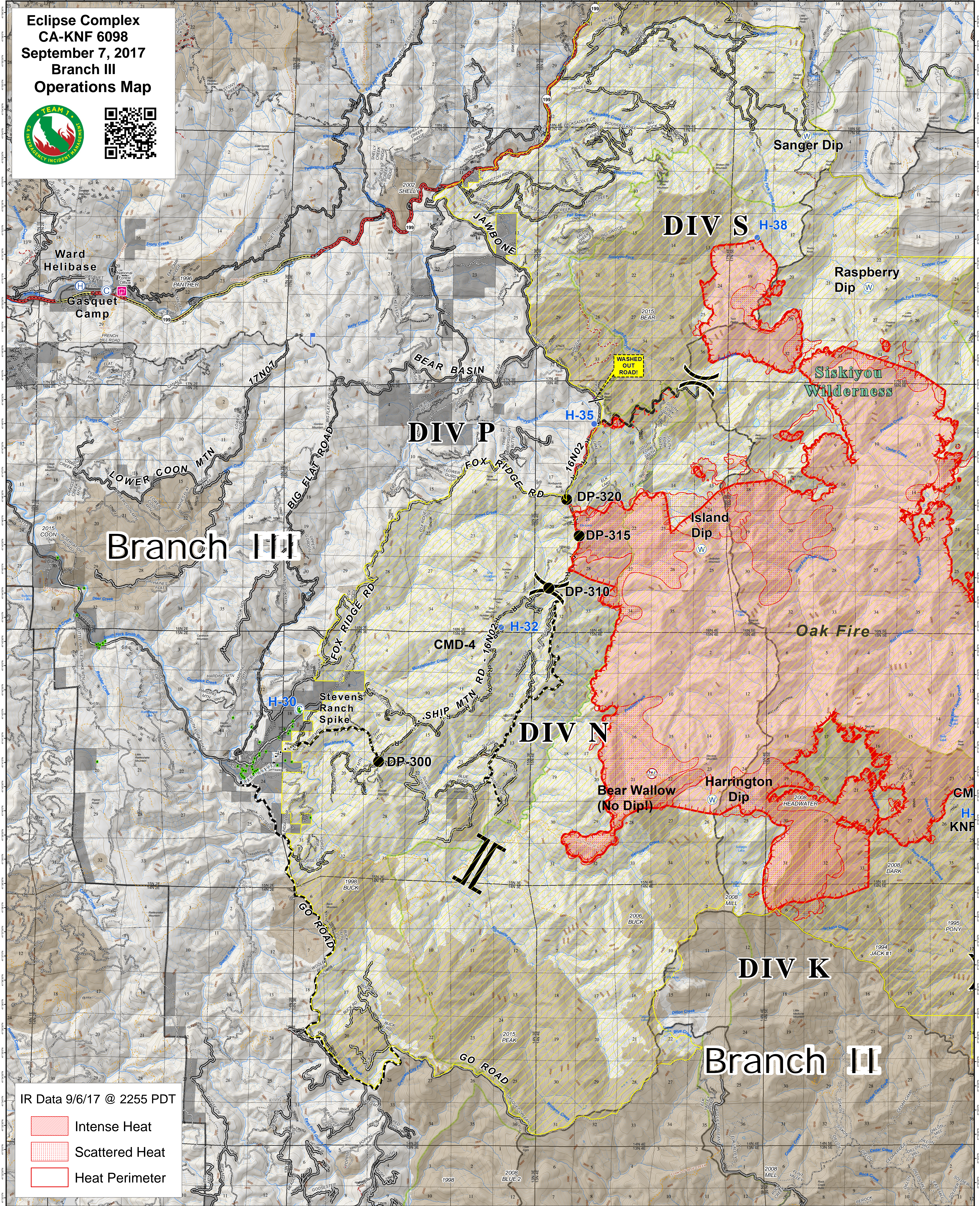
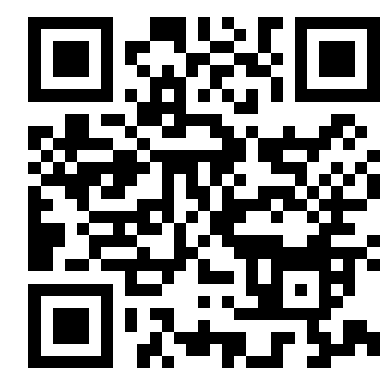


**Eclipse Complex  
CA-KNF 6098  
September 7, 2017  
Branch III  
Operations Map**



IR Data 9/6/17 @ 2255 PDT

- Intense Heat
- Scattered Heat
- Heat Perimeter

- |            |                         |                        |                        |                            |                          |
|------------|-------------------------|------------------------|------------------------|----------------------------|--------------------------|
| Division   | Helispot                | Summit_GNIS            | Geographic Feature     | Highway w/Median           | Decommissioned (KNF)     |
| Branch     | Lookout                 | Uncontrolled Fire Edge | Major Road             | Road - 4WD/Track           | Ranger District Boundary |
| Repeater   | Water Source            | Road as Completed Line | Class 3, 4, 5 or Paved | Road - Unimproved/Unpaved  | Wilderness               |
| Camp       | Restricted Water Source | Active Burnout         | 2 - High Clearance     | Road - Light Duty - Gravel | Ownership Private        |
| Drop Point | RoadWashout             | Planned Fire Line      | 1 - (Closed)           | Road - Light Duty - Paved  | FirePolygon              |
| Helibase   | Structures              | Proposed Dozer Line    | Highway                | Trail                      | Forest Closure Area      |



0 1 2 Miles  
NAD 1983 UTM zone 10N