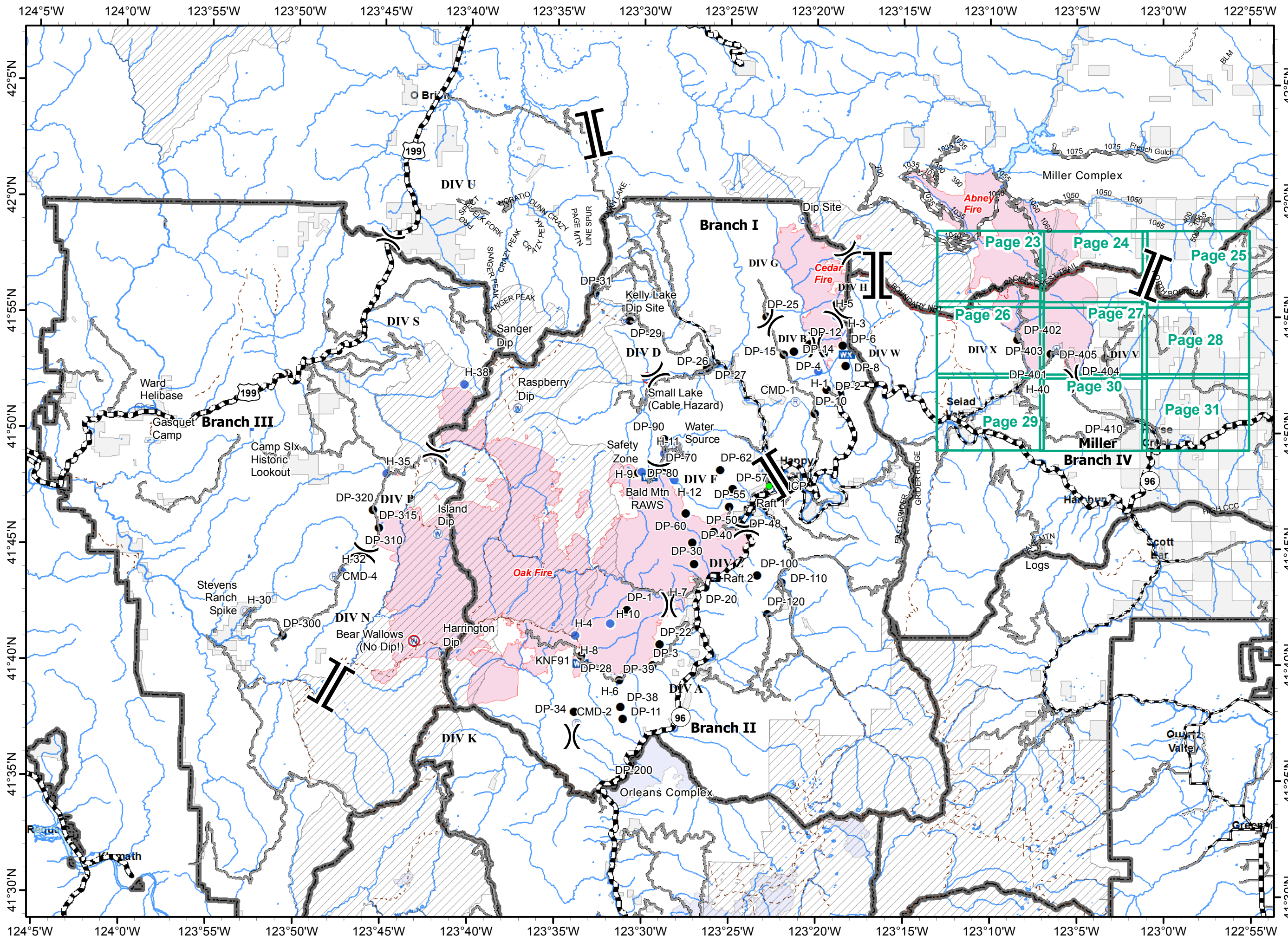


IAP MAP
BRANCH IV

Oak Fire – 85,031 Acres
Cedar Fire - 8,713 Acres
As of 9/6/17 1830 PDT



Map grid showing page numbers:

- Page 23
- Page 24
- Page 25
- Page 26
- Page 27
- Page 28
- Page 29
- Page 30
- Page 31

Legend









- () Division
- || Branch
- ⊙ Camp
- Drop Point
- ⊕ Helibase
- Helispot
- ▣ Incident Command Post
- └ Lookout
- WX Mobile Weather Unit
- Ⓡ Repeater
- ▲ Safety Zone
- Ⓜ Water Source
- Ⓜ Restricted Water Source
- ▭ Raft Landing
- ▭ Fire Polygon
- ▭ Ranger District Boundary
- ▭ Wilderness
- ▭ Ownership Private

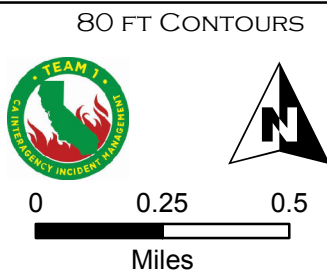
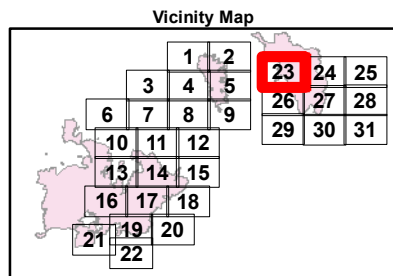
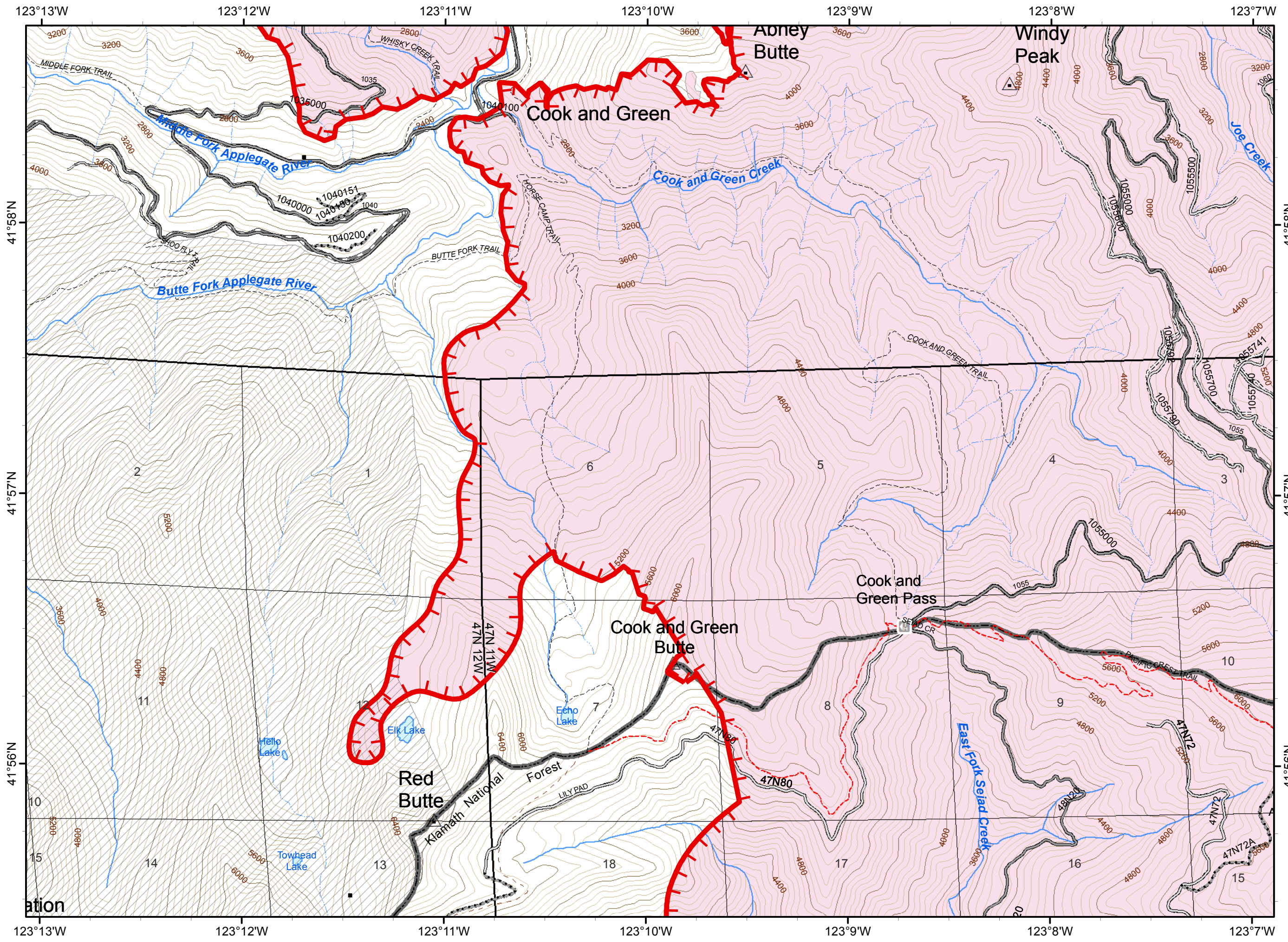
0 2.5 5
Miles

ECLIPSE COMPLEX
CA-KNF-006098
SEPTEMBER 7, 2017
IAP MAP
BRANCH IV

Oak Fire – 85,031 Acres
 Cedar Fire - 8,713 Acres
 As of 9/6/17 1830 PDT

Page 23






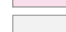



-  Division
-  Branch
-  Uncontrolled Fire Edge
-  Fire Polygon
-  Ownership Private
-  Wilderness
-  Structure
-  Ranger District Boundary

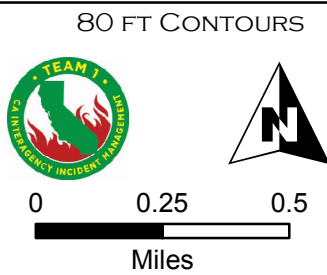
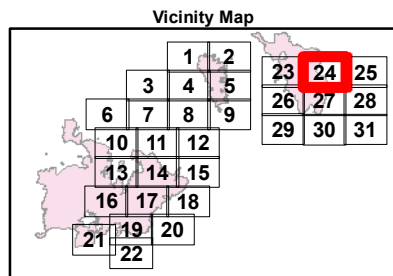
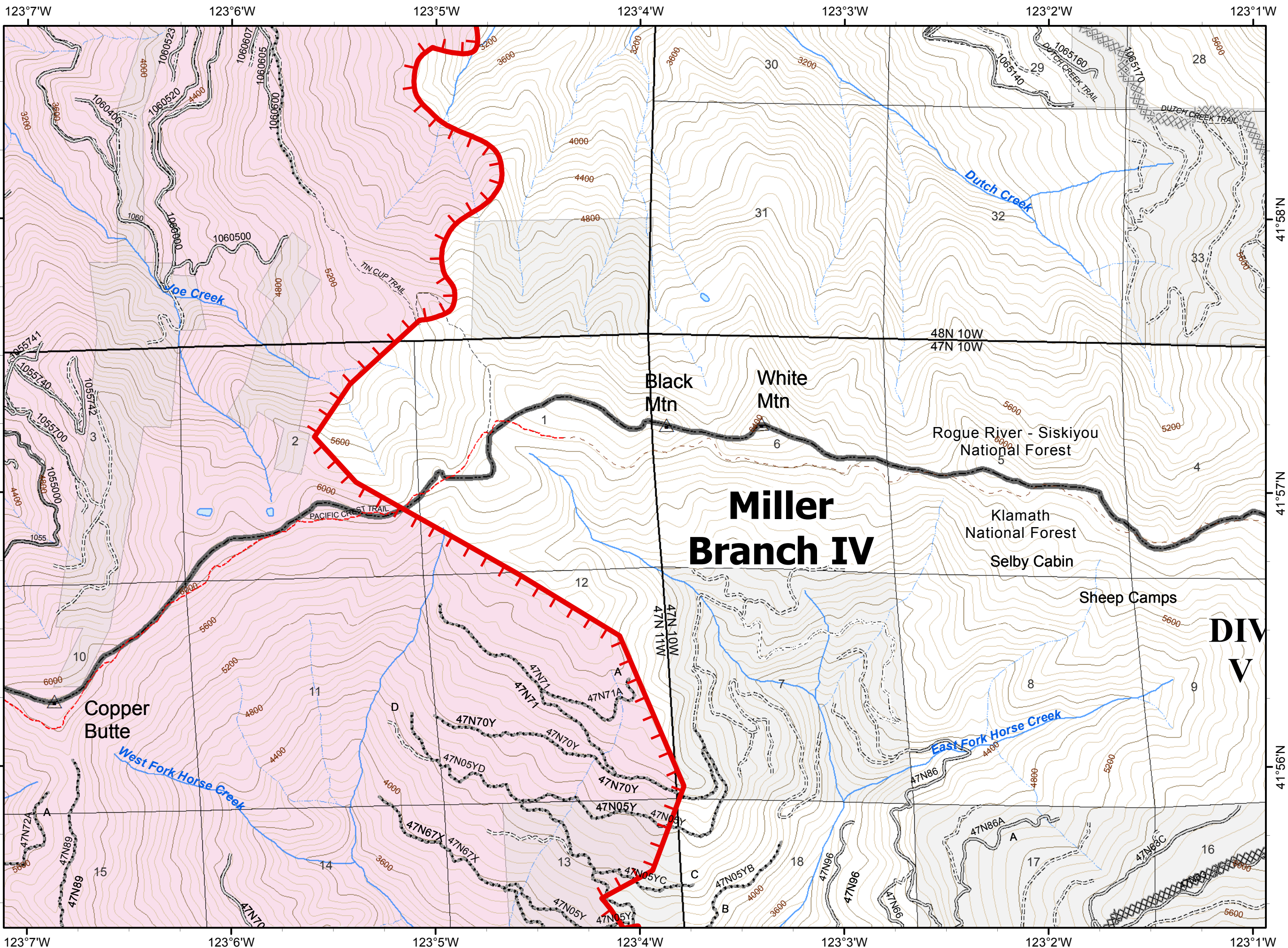


ECLIPSE COMPLEX
CA-KNF-006098
SEPTEMBER 7, 2017
IAP MAP
BRANCH IV

Oak Fire – 85,031 Acres
 Cedar Fire - 8,713 Acres
 As of 9/6/17 1830 PDT

Page 24

-  Division
-  Branch
-  Uncontrolled Fire Edge
-  Completed Dozer Line
-  Fire Polygon
-  Ownership Private
-  Structure
-  Ranger District Boundary
- Miller Complex**
-  Completed Dozer Line

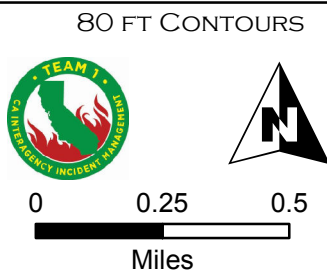
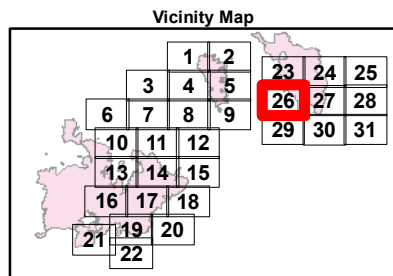
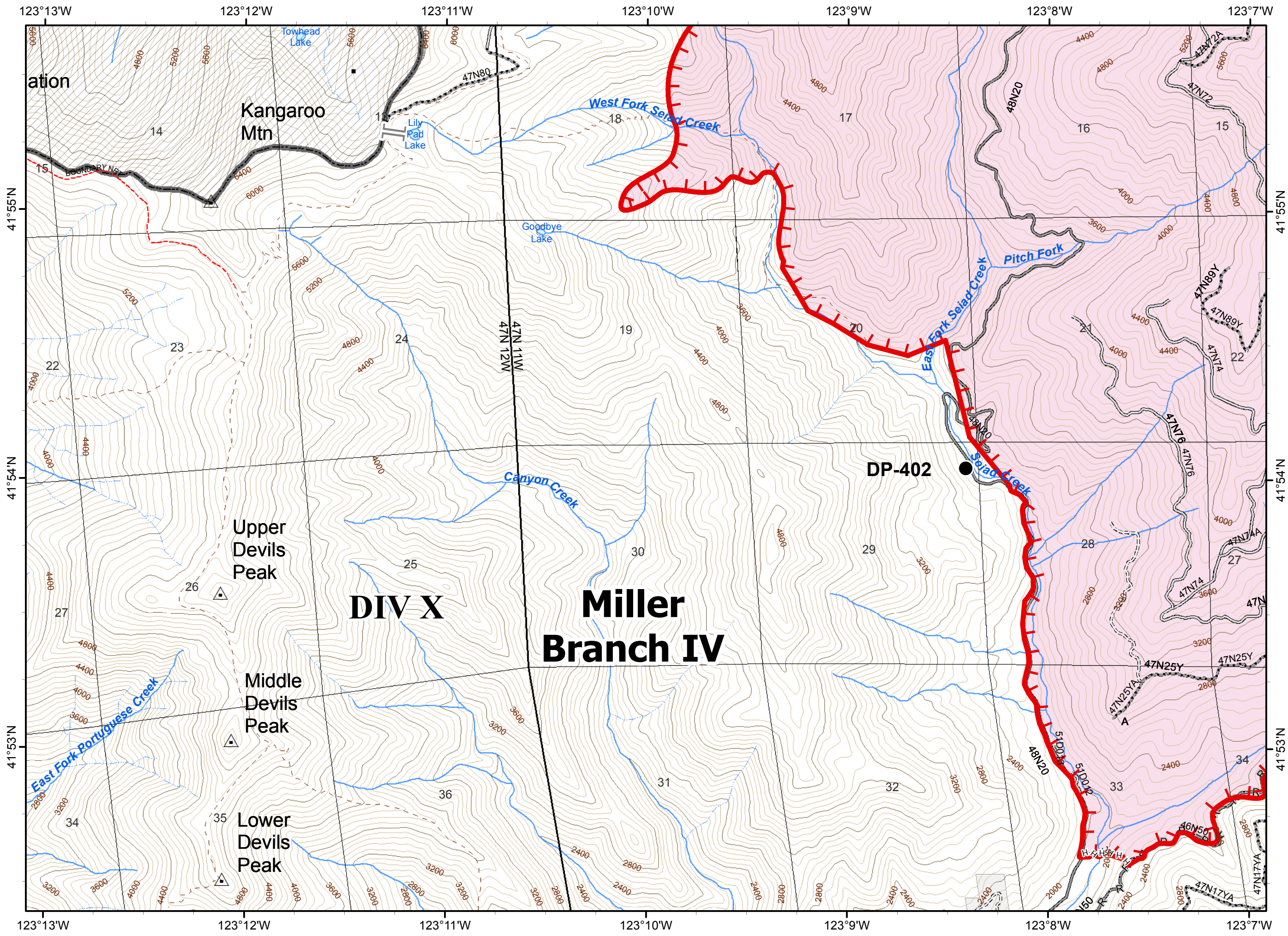















ECLIPSE COMPLEX
CA-KNF-006098
SEPTEMBER 7, 2017
IAP MAP
BRANCH IV

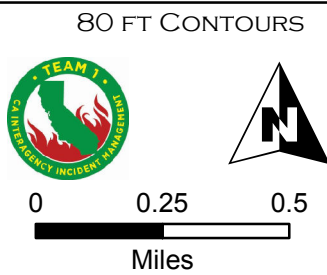
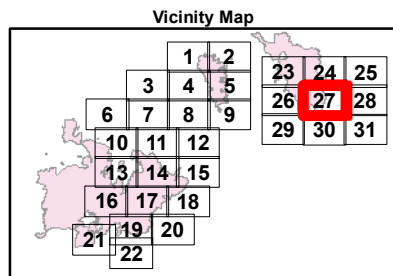
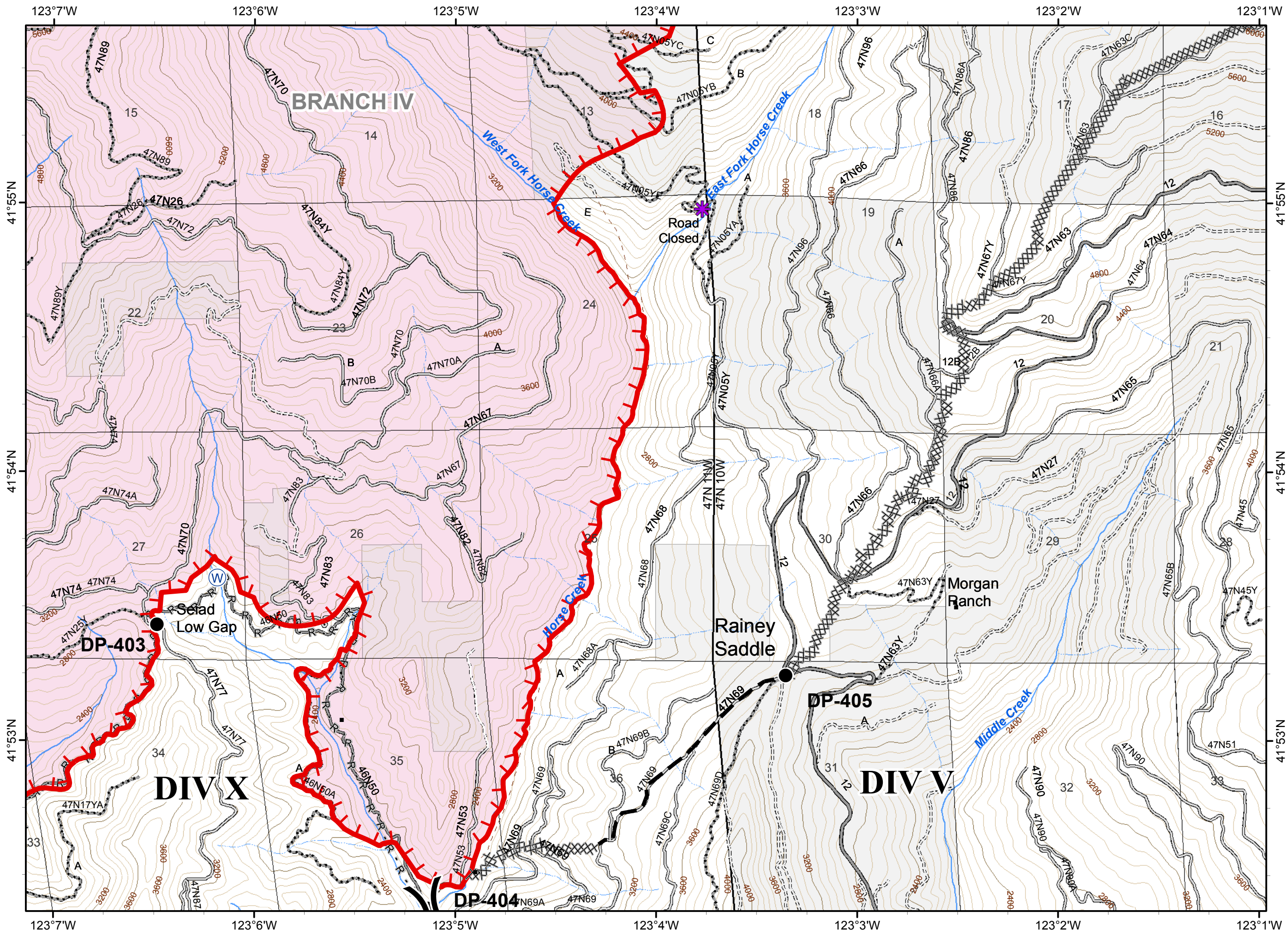
Oak Fire – 85,031 Acres
 Cedar Fire - 8,713 Acres
 As of 9/6/17 1830 PDT

Page 26

- Division
- Branch
- Uncontrolled Fire Edge
- H - H Hand Line
- R - R Road as Completed Line
- Drop Point
- Fire Polygon
- Ownership Private
- Wilderness
- Structure
- Ranger District Boundary
- Miller Complex**
- Branch Break






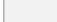


-  Division
-  Branch
-  Uncontrolled Fire Edge
-  Completed Dozer Line
-  R - R Road as Completed Line
-  Planned Fire Line
-  Drop Point
-  Water Source
-  Fire Polygon
-  Ownership Private
-  Structure
-  Ranger District Boundary
-  RoadWashout

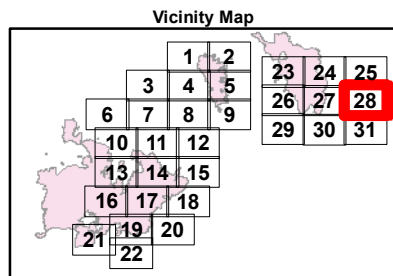
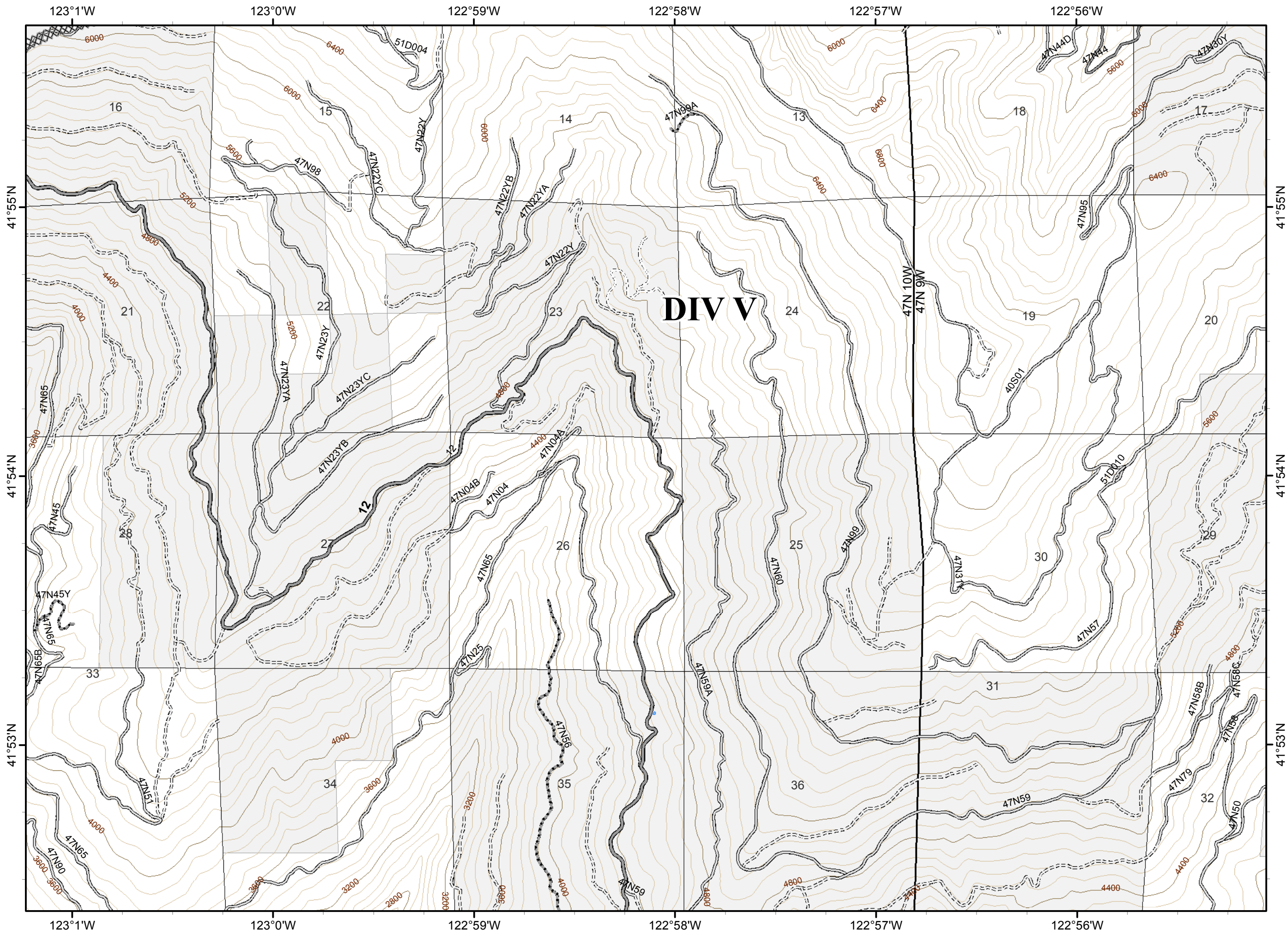


ECLIPSE COMPLEX
CA-KNF-006098
SEPTEMBER 7, 2017
IAP MAP
BRANCH IV

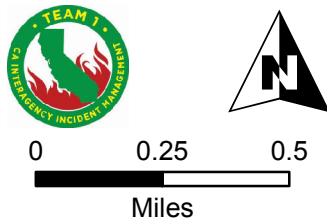
Oak Fire – 85,031 Acres
 Cedar Fire - 8,713 Acres
 As of 9/6/17 1830 PDT

Page 28

-  Division
-  Branch
-  Completed Dozer Line
-  Ownership Private
-  Structure
-  Ranger District Boundary











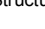

80 FT CONTOURS

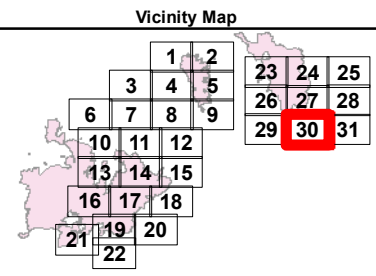


ECLIPSE COMPLEX
CA-KNF-006098
SEPTEMBER 7, 2017
IAP MAP
BRANCH IV

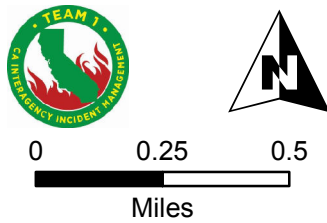
Oak Fire – 85,031 Acres
 Cedar Fire - 8,713 Acres
 As of 9/6/17 1830 PDT

Page 30

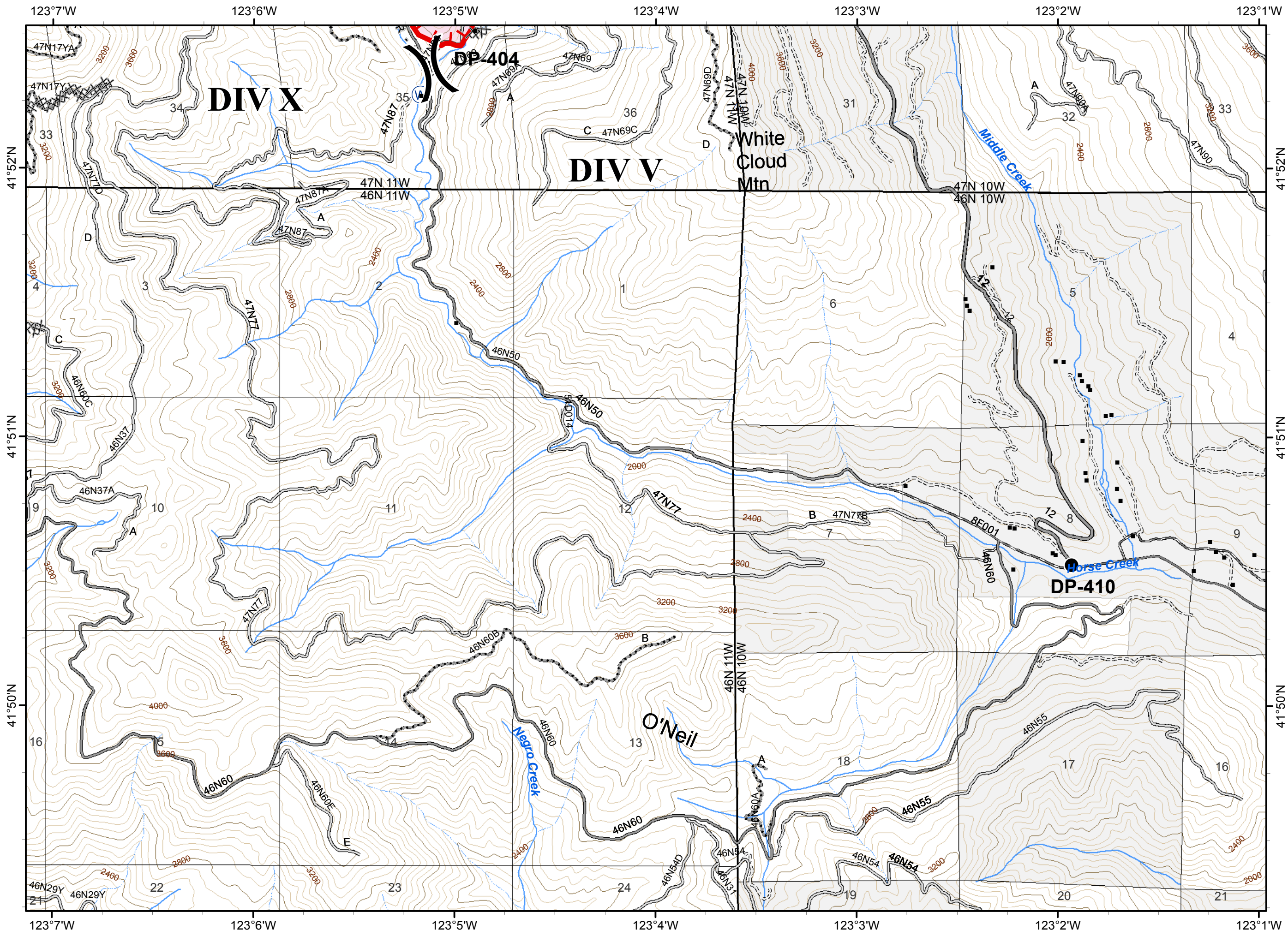
-  Division
-  Branch
-  Uncontrolled Fire Edge
-  Completed Dozer Line
- R - R** Road as Completed Line
-  Drop Point
-  Water Source
-  Fire Polygon
-  Ownership Private
-  Structure
-  Ranger District Boundary



80 FT CONTOURS



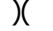
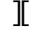
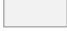


9/6/2017 8:19:03 PM

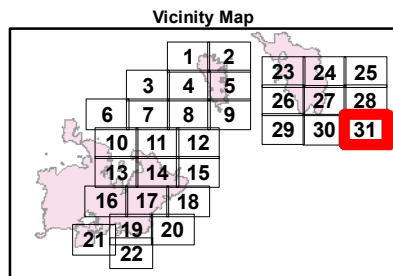
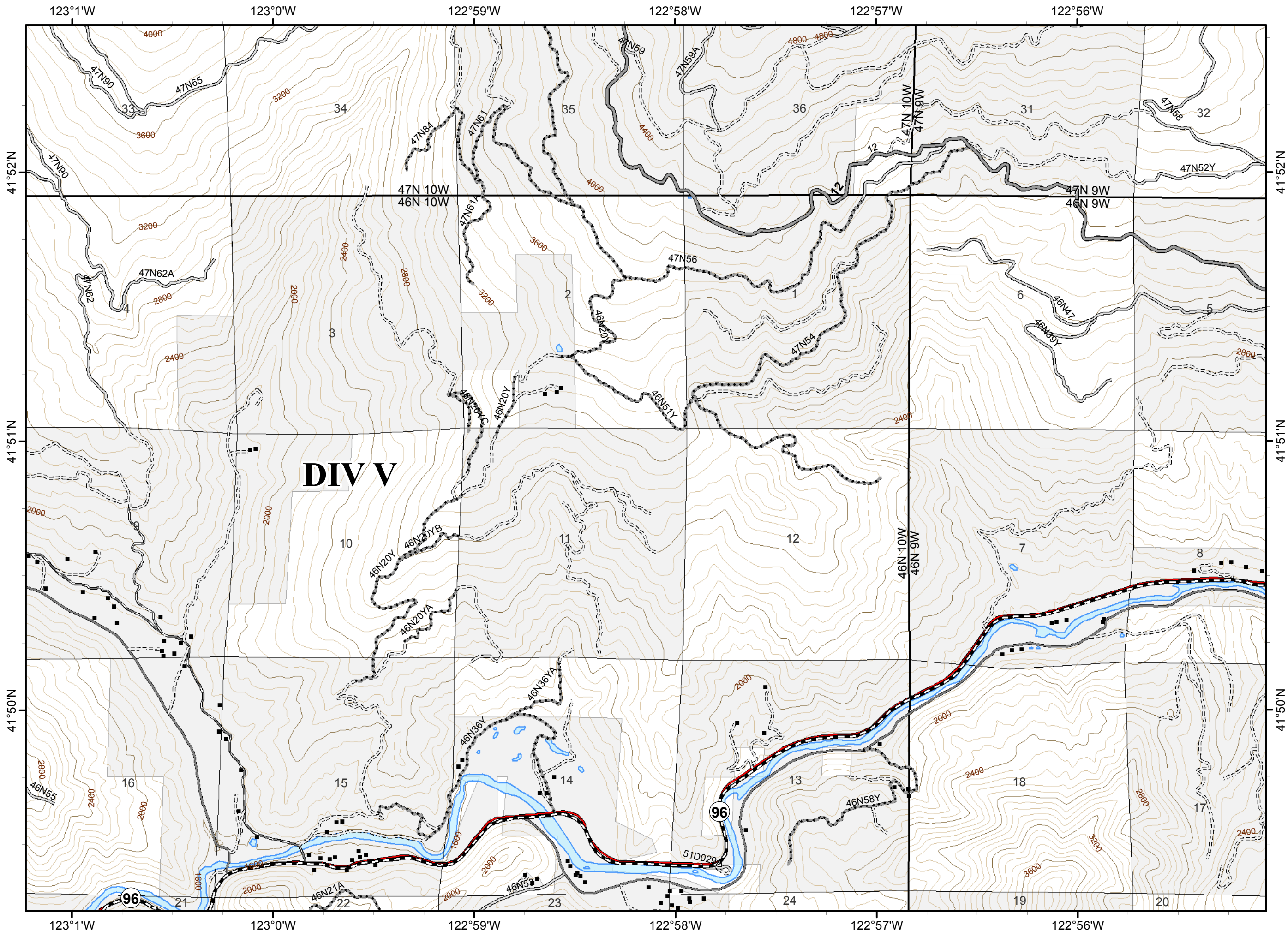


ECLIPSE COMPLEX
CA-KNF-006098
SEPTEMBER 7, 2017
IAP MAP
BRANCH IV

Oak Fire – 85,031 Acres
 Cedar Fire - 8,713 Acres
 As of 9/6/17 1830 PDT

Page 31

-  Division
-  Branch
-  Ownership Private
-  Structure
-  Ranger District Boundary



80 FT CONTOURS

