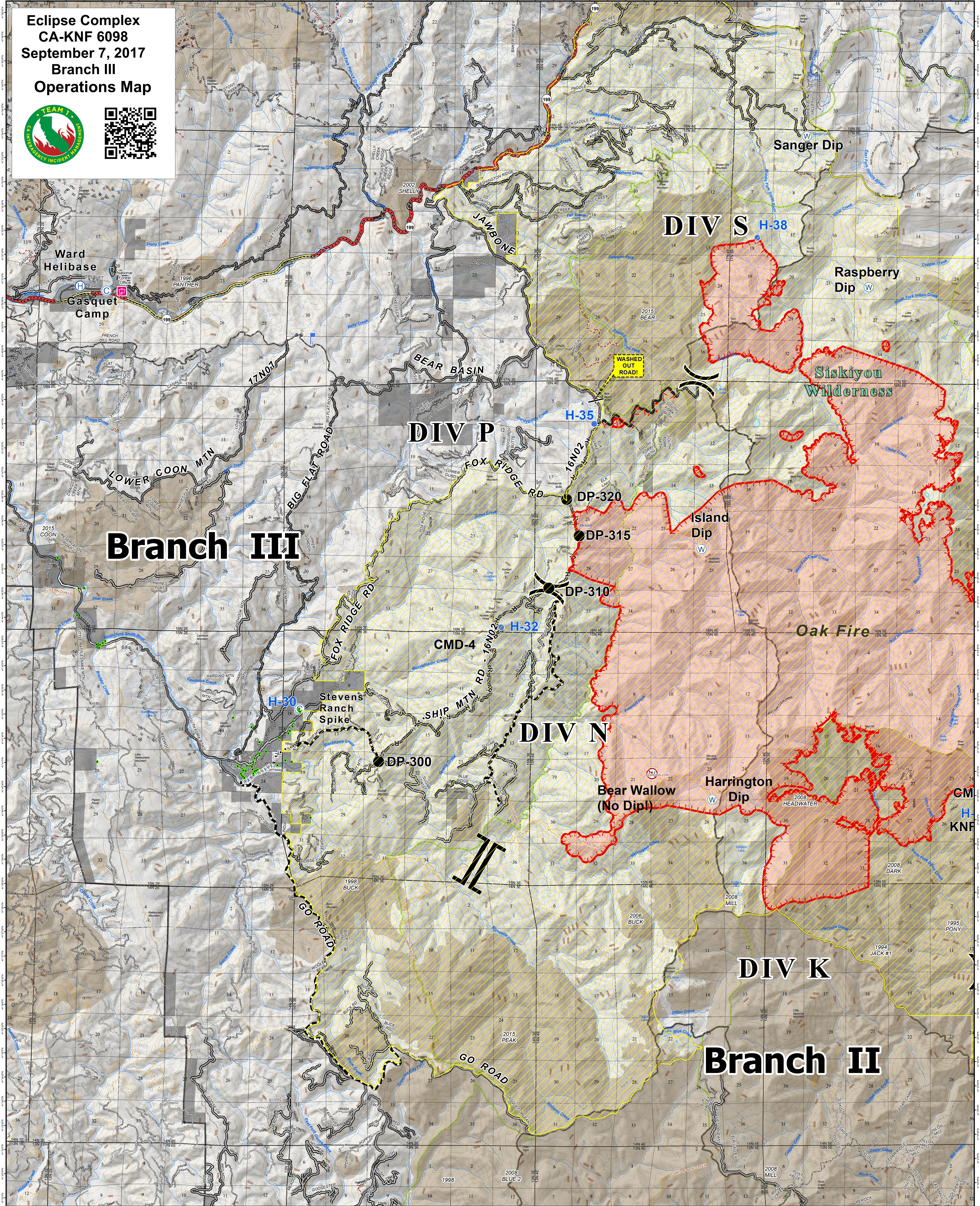
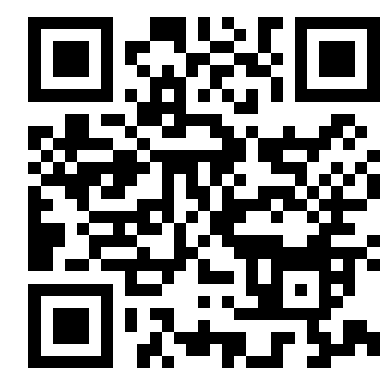


**Eclipse Complex  
CA-KNF 6098  
September 7, 2017  
Branch III  
Operations Map**



(X)	Division	●	Helispot	▲	Summit_GNIS	(-----)	Geographic Feature	==	Highway w/Median	-----	Decommissioned (KNF)
(II)	Branch	⬇	Lookout	▬	Uncontrolled Fire Edge	-----	Major Road	---	Road - 4WD/Track	▭	Ranger District Boundary
(R)	Repeater	(W)	Water Source	R - - R	Road as Completed Line	---	Class 3, 4, 5 or Paved	---	Road - Unimproved/Unpaved	▭	Wilderness
(C)	Camp	(W)	Restricted Water Source	⋯	Active Burnout	---	2 - High Clearance	---	Road - Light Duty - Gravel	▭	Ownership Private
●	Drop Point	*	RoadWashout	---	Planned Fire Line	---	1 - (Closed)	---	Road - Light Duty - Paved	▭	FirePolygon
(H)	Helibase	•	Structures	⊗	Proposed Dozer Line	---	Highway	---	Trail	▭	Forest Closure Area



0 1 2 Miles  
NAD 1983 UTM zone 10N