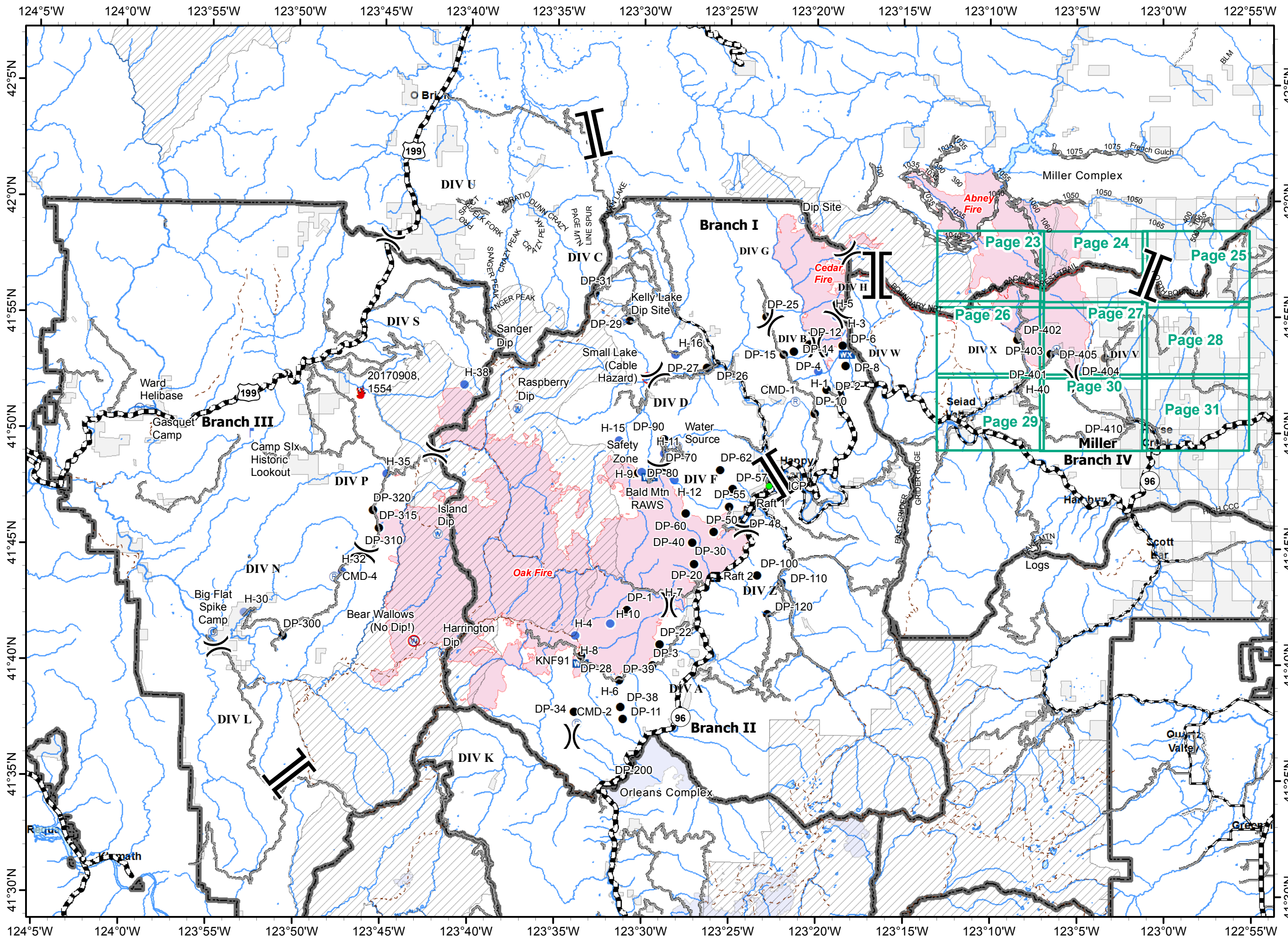


IAP MAP
BRANCH IV

Oak Fire – 87,101 Acres
Cedar Fire - 9,050 Acres
As of 9/7/17 1400 PDT



Map navigation grid with page numbers:

- Page 23
- Page 24
- Page 25
- Page 26
- Page 27
- Page 28
- Page 29
- Page 30
- Page 31





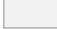



- ### Legend
- () Division
 - ||| Branch
 - ⊙ Camp
 - Drop Point
 - 🔥 Fire Location
 - ⊕ Helibase
 - Helispot
 - 🏠 Incident Command Post
 - 🔍 Lookout
 - 🌤️ Mobile Weather Unit
 - Ⓜ️ Repeater
 - ⚠️ Safety Zone
 - 💧 Water Source
 - 🚫 Restricted Water Source
 - 🚣 Raft Landing
 - 🔴 Fire Polygon
 - ▭ Ranger District Boundary
 - ▨ Wilderness
 - ⬜ Ownership Private

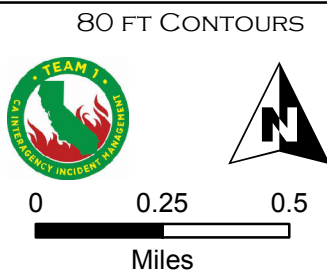
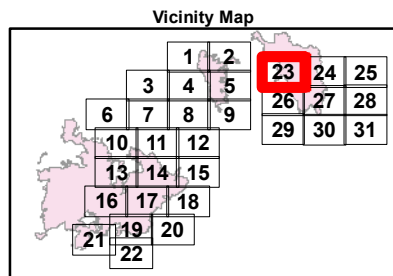
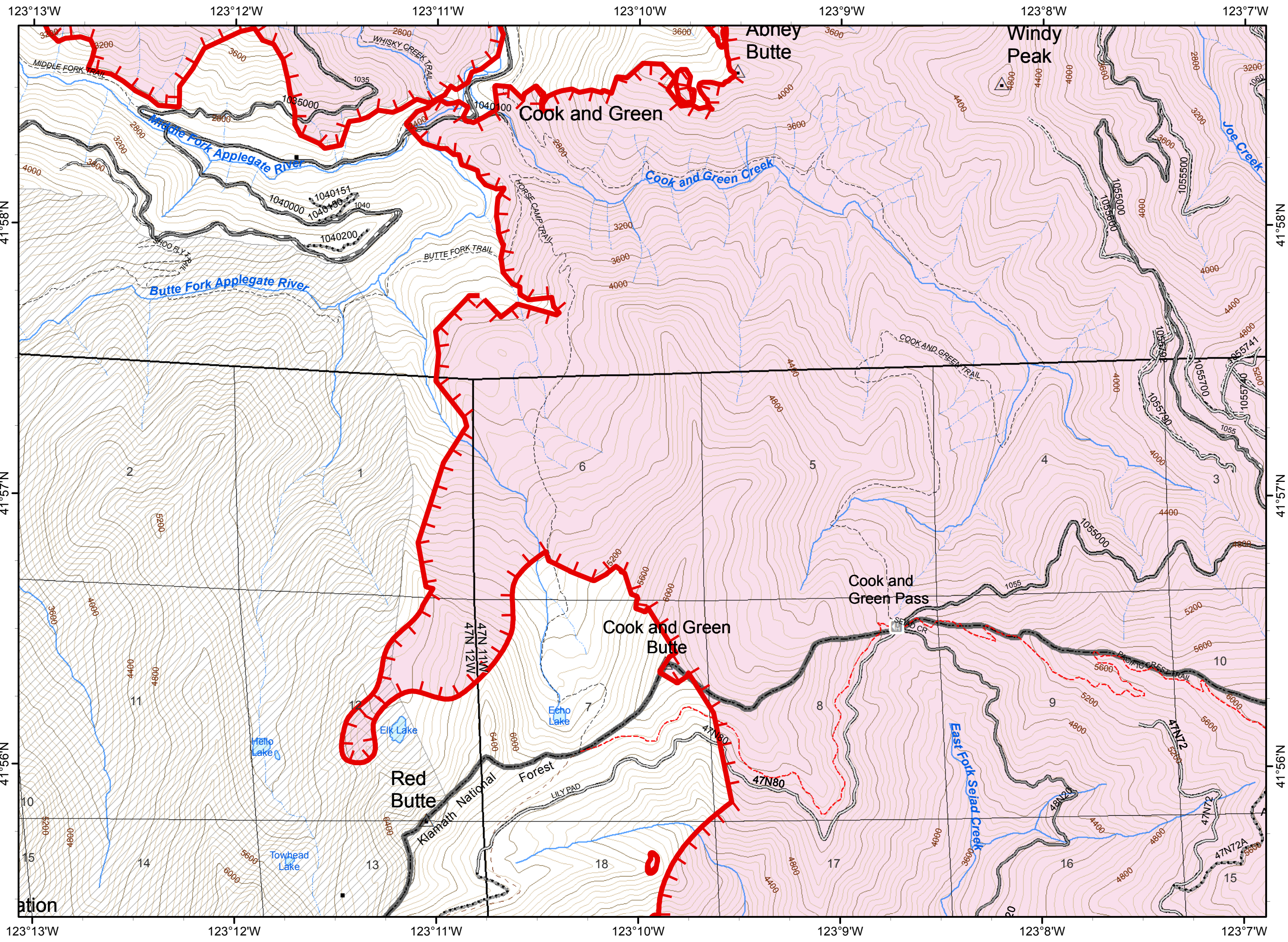
0 2.5 5
Miles

ECLIPSE COMPLEX
CA-KNF-006098
SEPTEMBER 9, 2017
IAP MAP
BRANCH IV

Oak Fire – 87,101 Acres
 Cedar Fire - 9,050 Acres
 As of 9/7/17 1400 PDT

Page 23






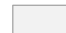



-  Division
-  Branch
-  Uncontrolled Fire Edge
-  Fire Polygon
-  Ownership Private
-  Wilderness
-  Structure
-  Ranger District Boundary

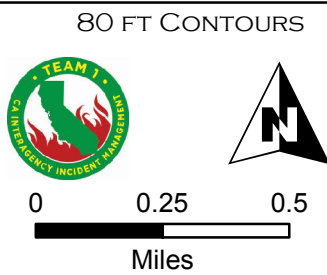
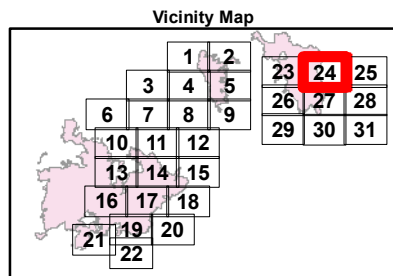
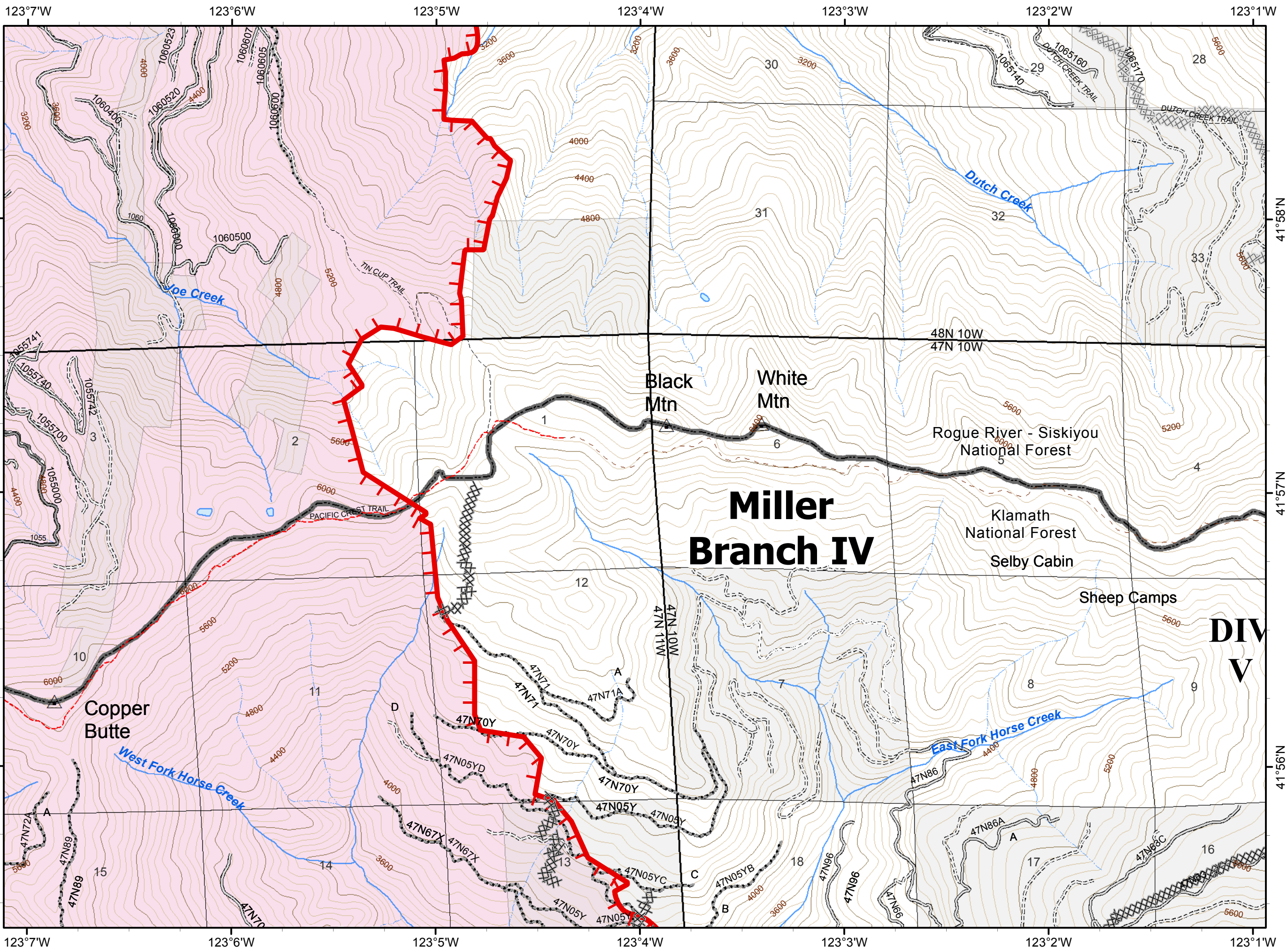


ECLIPSE COMPLEX
CA-KNF-006098
SEPTEMBER 9, 2017
IAP MAP
BRANCH IV

Oak Fire – 87,101 Acres
 Cedar Fire - 9,050 Acres
 As of 9/7/17 1400 PDT

Page 24

-  Division
-  Branch
-  Uncontrolled Fire Edge
-  Completed Dozer Line
-  Fire Polygon
-  Ownership Private
-  Structure
-  Ranger District Boundary
- Miller Complex**
-  Completed Dozer Line

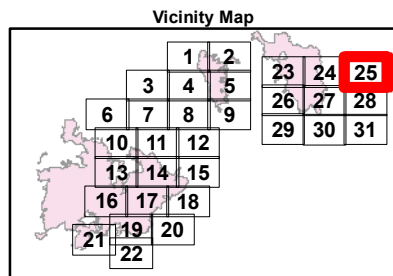
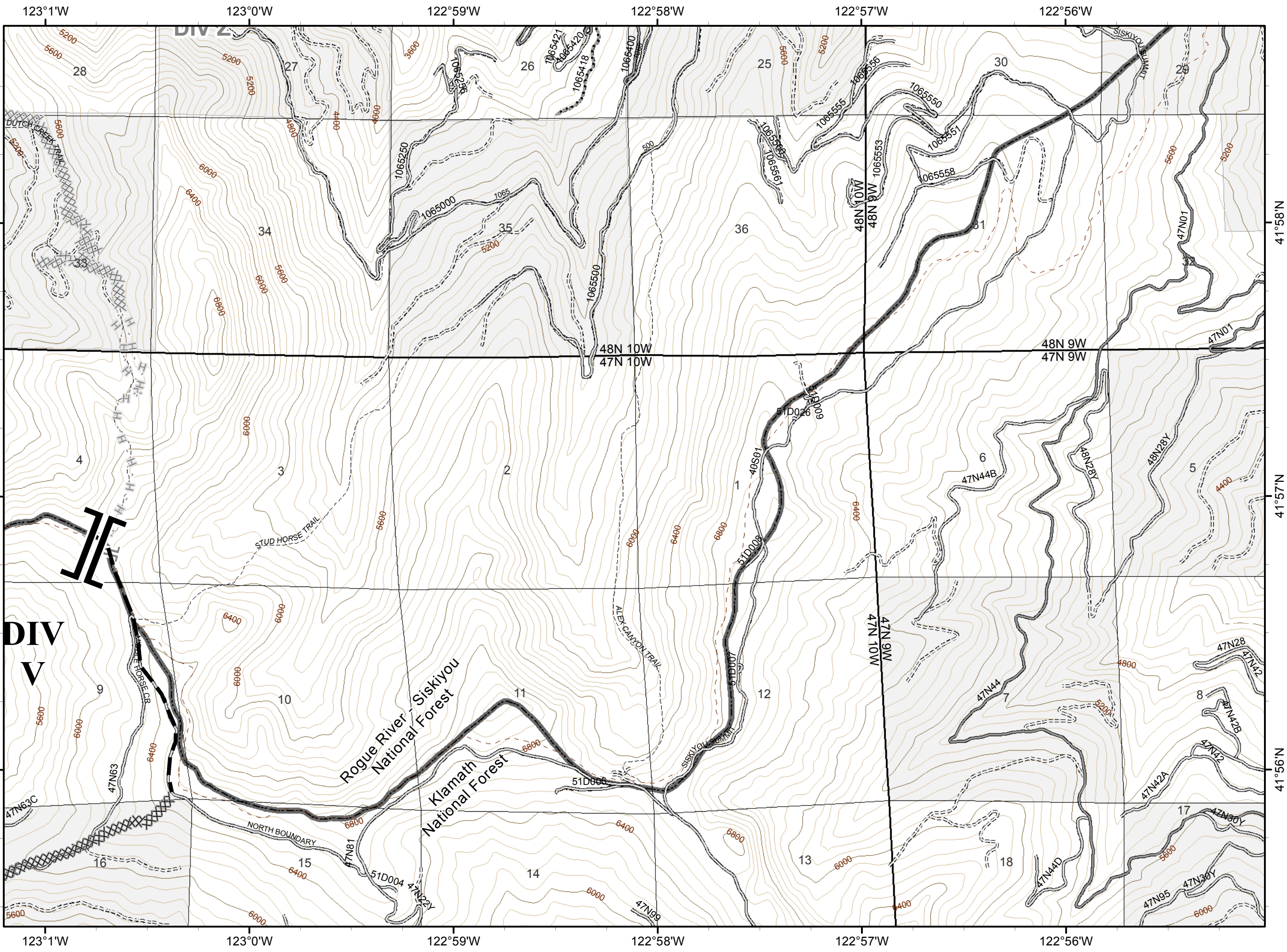


ECLIPSE COMPLEX
CA-KNF-006098
SEPTEMBER 9, 2017
IAP MAP
BRANCH IV

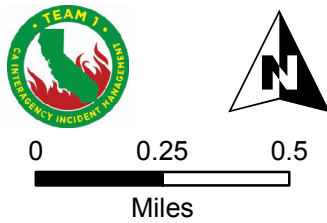
Oak Fire – 87,101 Acres
Cedar Fire – 9,050 Acres
As of 9/7/17 1400 PDT

Page 25

- Division
- Branch
- Completed Dozer Line
- Planned Fire Line
- Ownership Private
- Structure
- Ranger District Boundary
- Miller Complex**
- Branch Break
- Miller Complex**
- Completed Dozer Line
- Completed Hand Line



80 FT CONTOURS

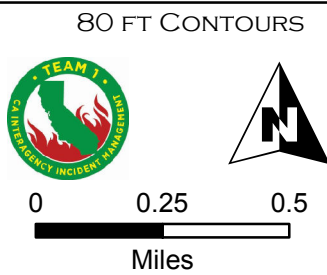
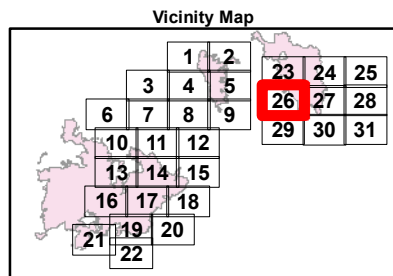
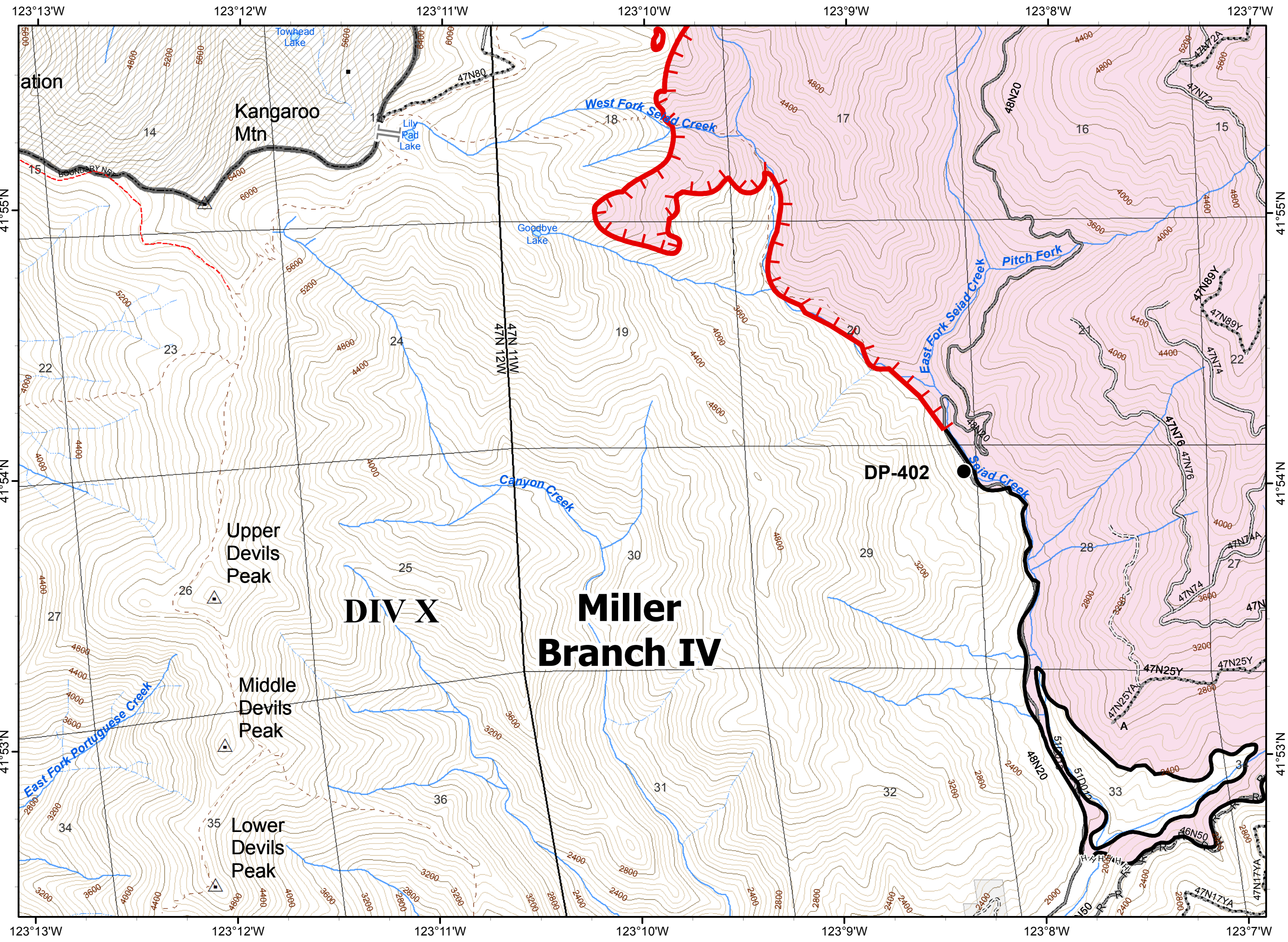


ECLIPSE COMPLEX
CA-KNF-006098
SEPTEMBER 9, 2017
IAP MAP
BRANCH IV

Oak Fire – 87,101 Acres
 Cedar Fire - 9,050 Acres
 As of 9/7/17 1400 PDT

Page 26


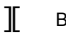










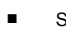

-  Division
-  Branch
-  Uncontrolled Fire Edge
-  Completed Line
-  Hand Line
-  Road as Completed Line
-  Drop Point
-  Fire Polygon
-  Ownership Private
-  Wilderness
-  Structure
-  Ranger District Boundary
- Miller Complex**
-  Branch Break

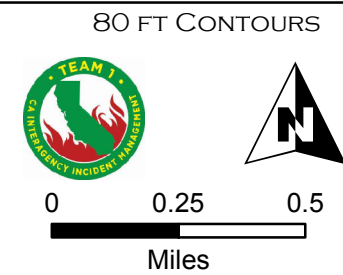
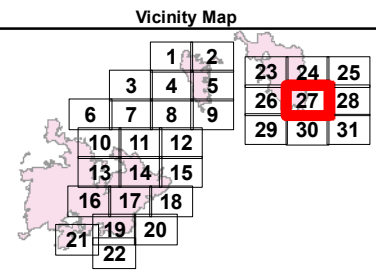


ECLIPSE COMPLEX
CA-KNF-006098
SEPTEMBER 9, 2017
IAP MAP
BRANCH IV

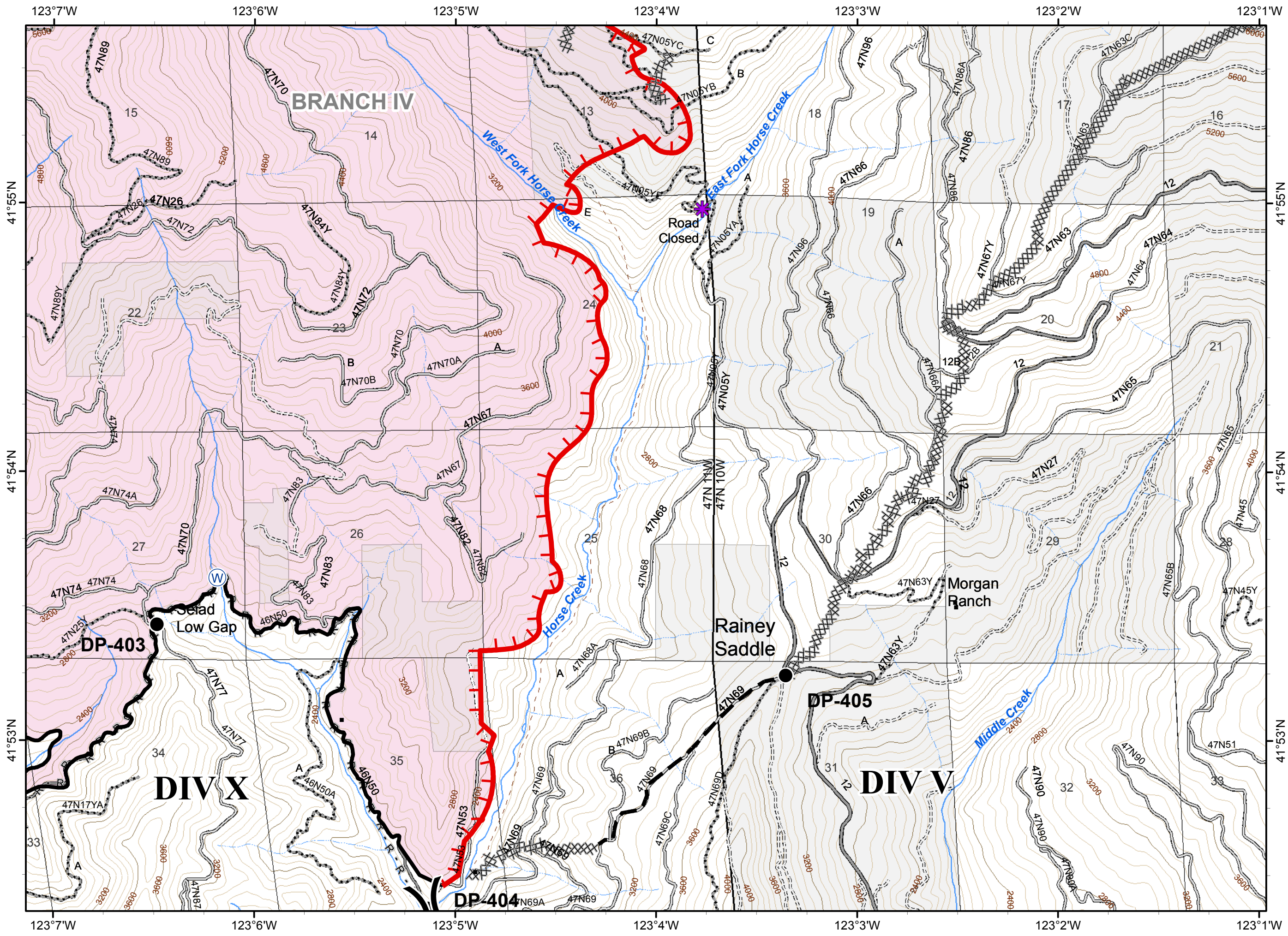
Oak Fire – 87,101 Acres
 Cedar Fire - 9,050 Acres
 As of 9/7/17 1400 PDT

Page 27

-  Division
-  Branch
-  Uncontrolled Fire Edge
-  Completed Dozer Line
-  Completed Line
-  R - R Road as Completed Line
-  Planned Fire Line
-  Drop Point
-  Water Source
-  Fire Polygon
-  Ownership Private
-  Structure
-  Ranger District Boundary
-  RoadWashout






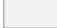


9/8/2017 8:10:48 PM

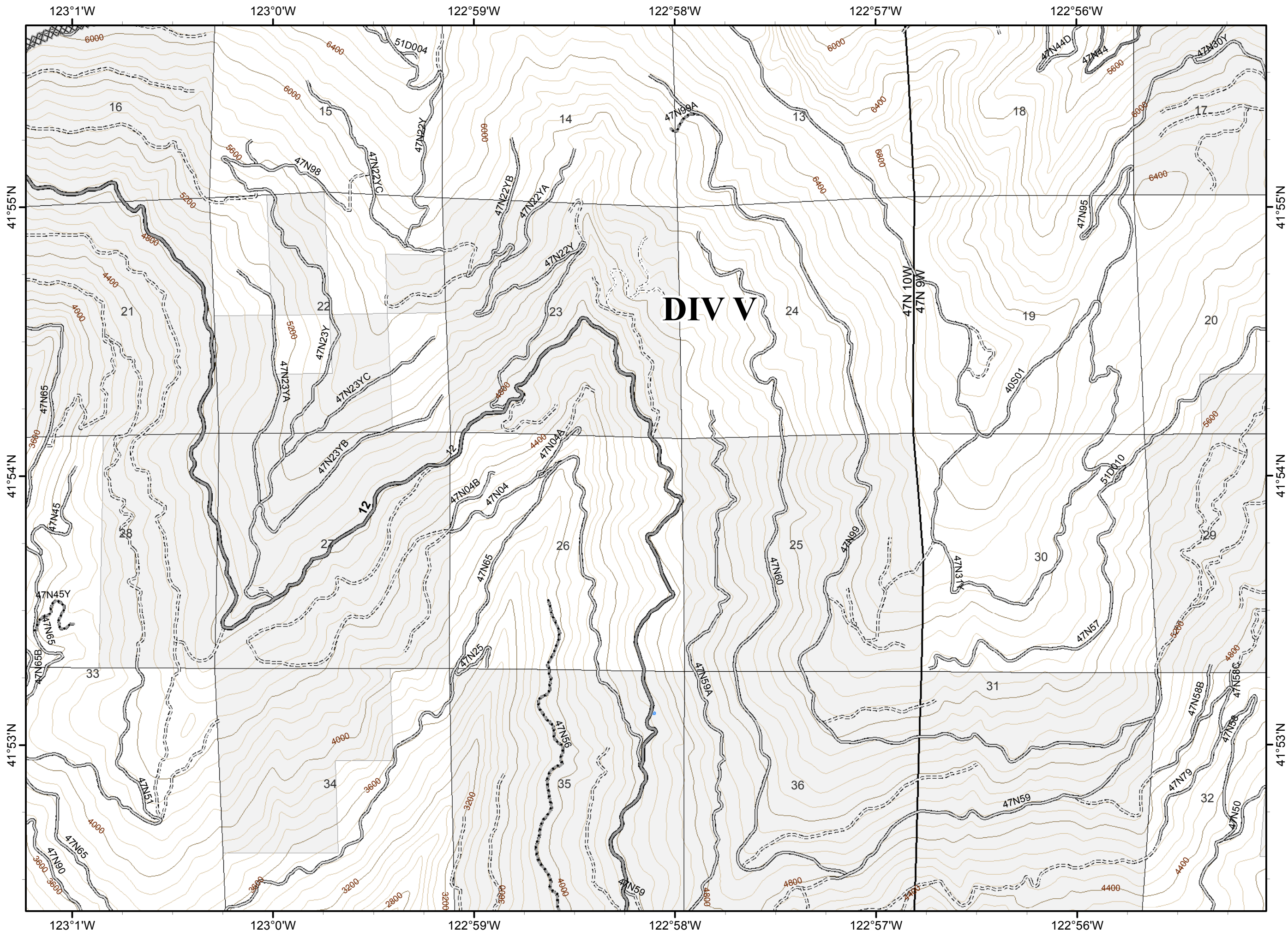


ECLIPSE COMPLEX
CA-KNF-006098
SEPTEMBER 9, 2017
IAP MAP
BRANCH IV

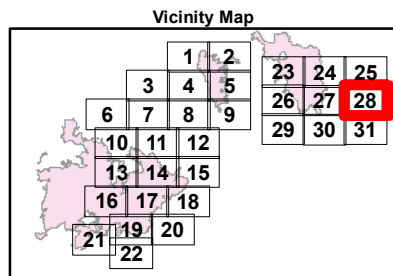
Oak Fire – 87,101 Acres
 Cedar Fire - 9,050 Acres
 As of 9/7/17 1400 PDT

Page 28

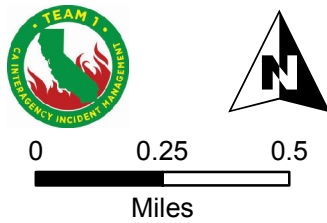
-  Division
-  Branch
-  Completed Dozer Line
-  Ownership Private
-  Structure
-  Ranger District Boundary



DIV V






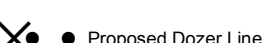


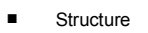
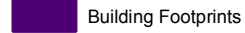
80 FT CONTOURS

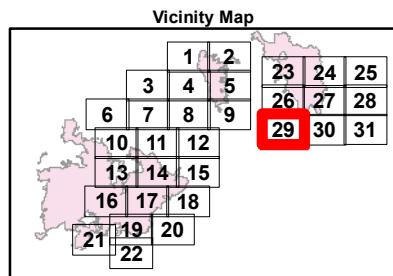
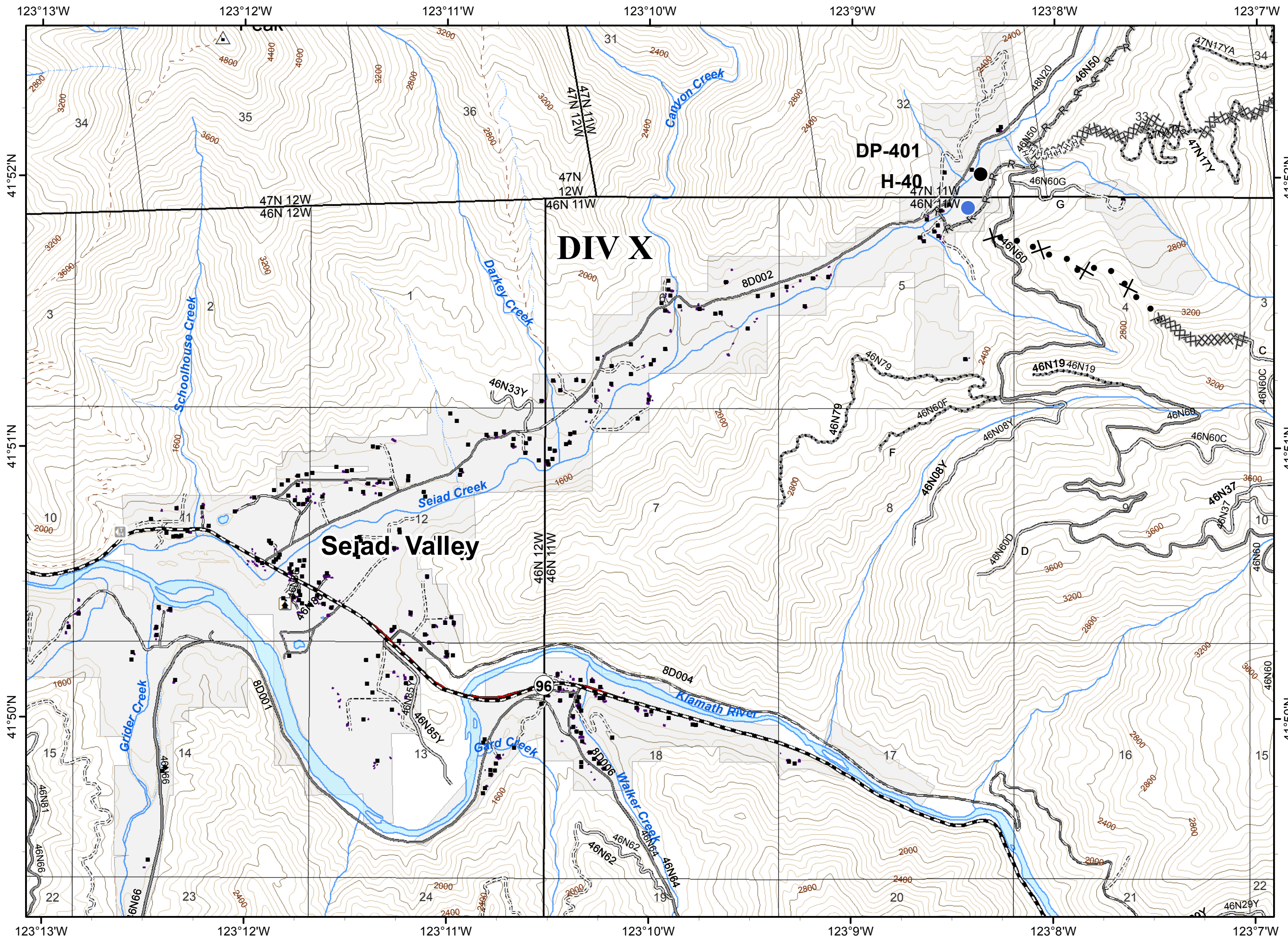


ECLIPSE COMPLEX
CA-KNF-006098
SEPTEMBER 9, 2017
IAP MAP
BRANCH IV

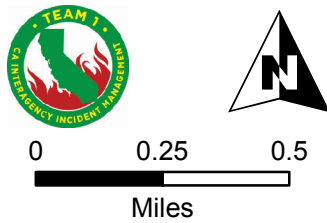
Oak Fire – 87,101 Acres
 Cedar Fire - 9,050 Acres
 As of 9/7/17 1400 PDT

Page 29

-  Division
-  Branch
-  Completed Dozer Line
-  Hand Line
-  Road as Completed Line
-  Proposed Dozer Line
-  Drop Point
-  Helispot
-  Ownership Private
-  Structure
-  Building Footprints
-  Ranger District Boundary















80 FT CONTOURS

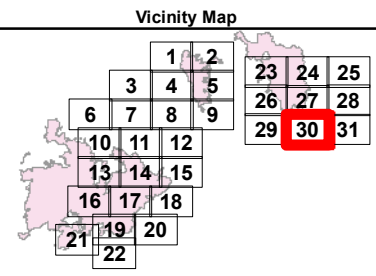


ECLIPSE COMPLEX
CA-KNF-006098
SEPTEMBER 9, 2017
IAP MAP
BRANCH IV

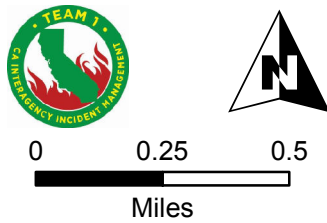
Oak Fire – 87,101 Acres
 Cedar Fire - 9,050 Acres
 As of 9/7/17 1400 PDT

Page 30

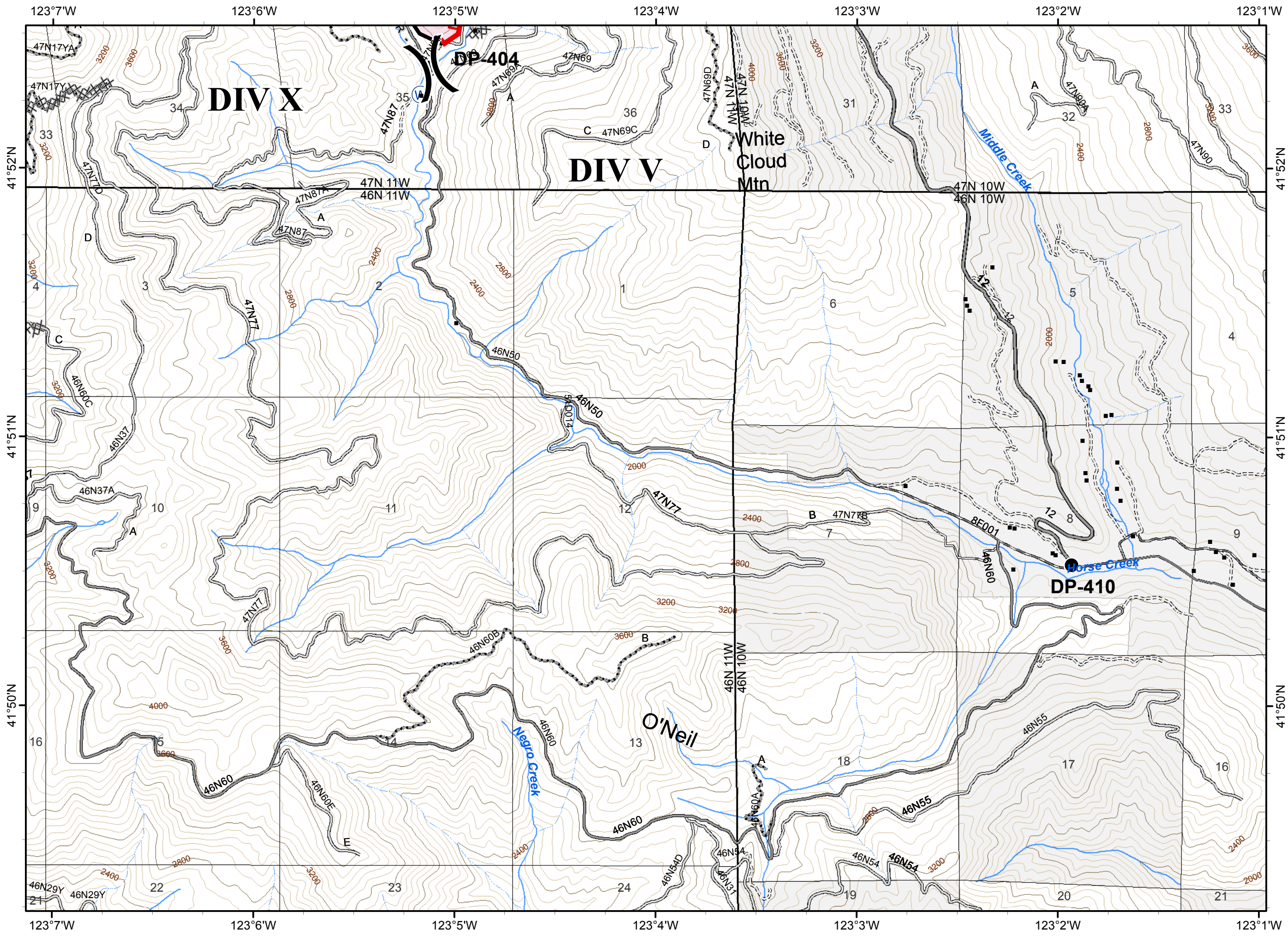
-  Division
-  Branch
-  Uncontrolled Fire Edge
-  Completed Dozer Line
-  Completed Line
-  R - R Road as Completed Line
-  Drop Point
-  Water Source
-  Fire Polygon
-  Ownership Private
-  Structure
-  Ranger District Boundary



80 FT CONTOURS








9/8/2017 8:10:48 PM

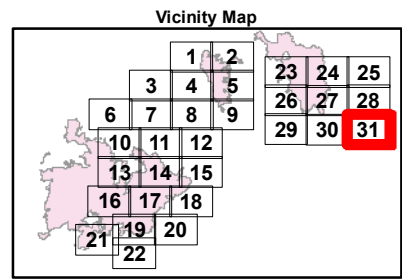
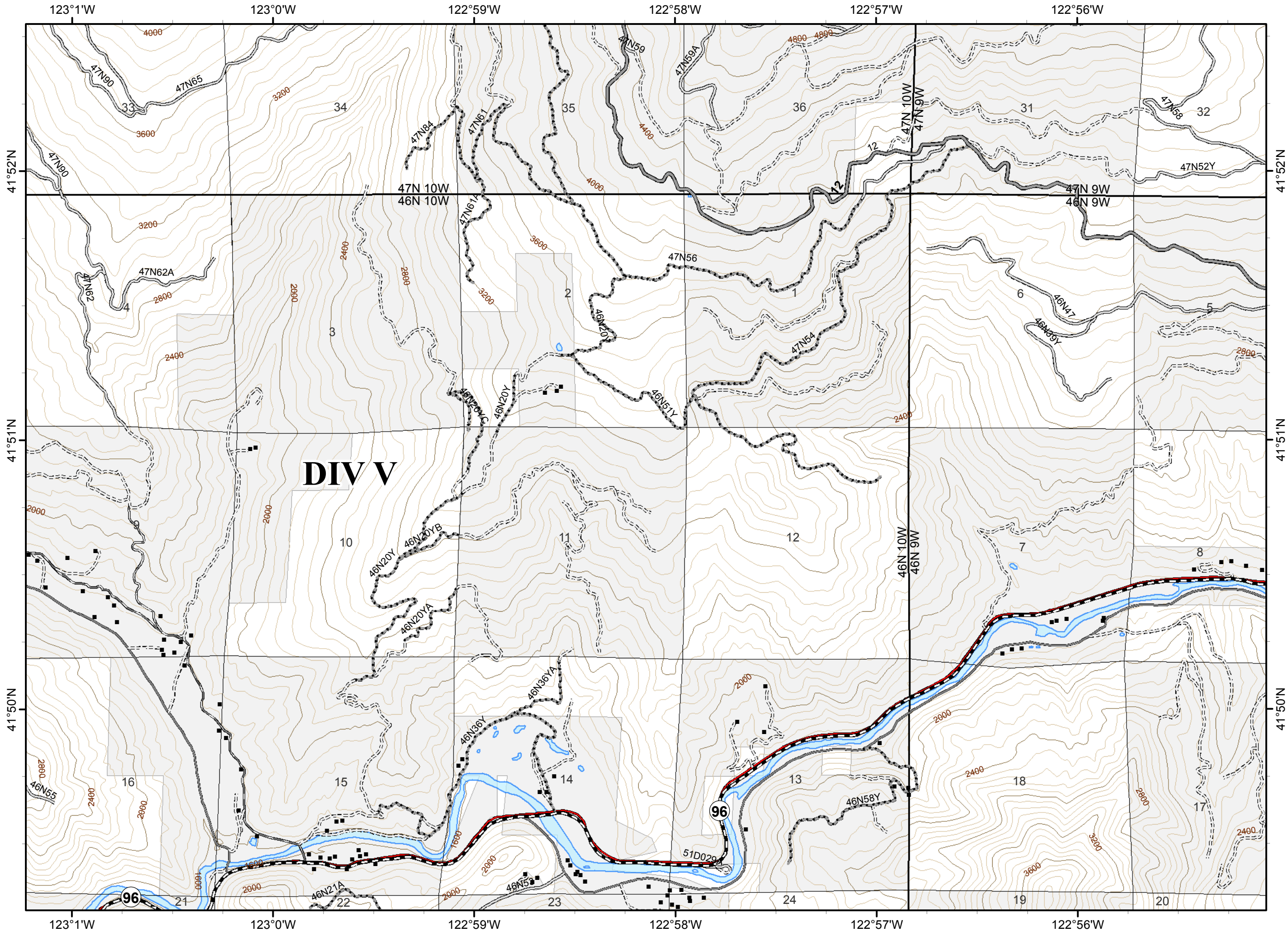


**ECLIPSE COMPLEX
CA-KNF-006098
SEPTEMBER 9, 2017
IAP MAP
BRANCH IV**

Oak Fire – 87,101 Acres
Cedar Fire - 9,050 Acres
As of 9/7/17 1400 PDT

Page 31

-  Division
-  Branch
-  Ownership Private
-  Structure
-  Ranger District Boundary



80 FT CONTOURS

