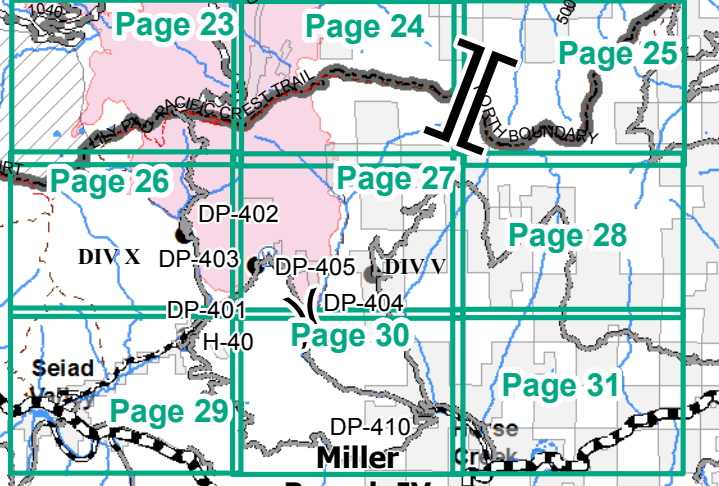
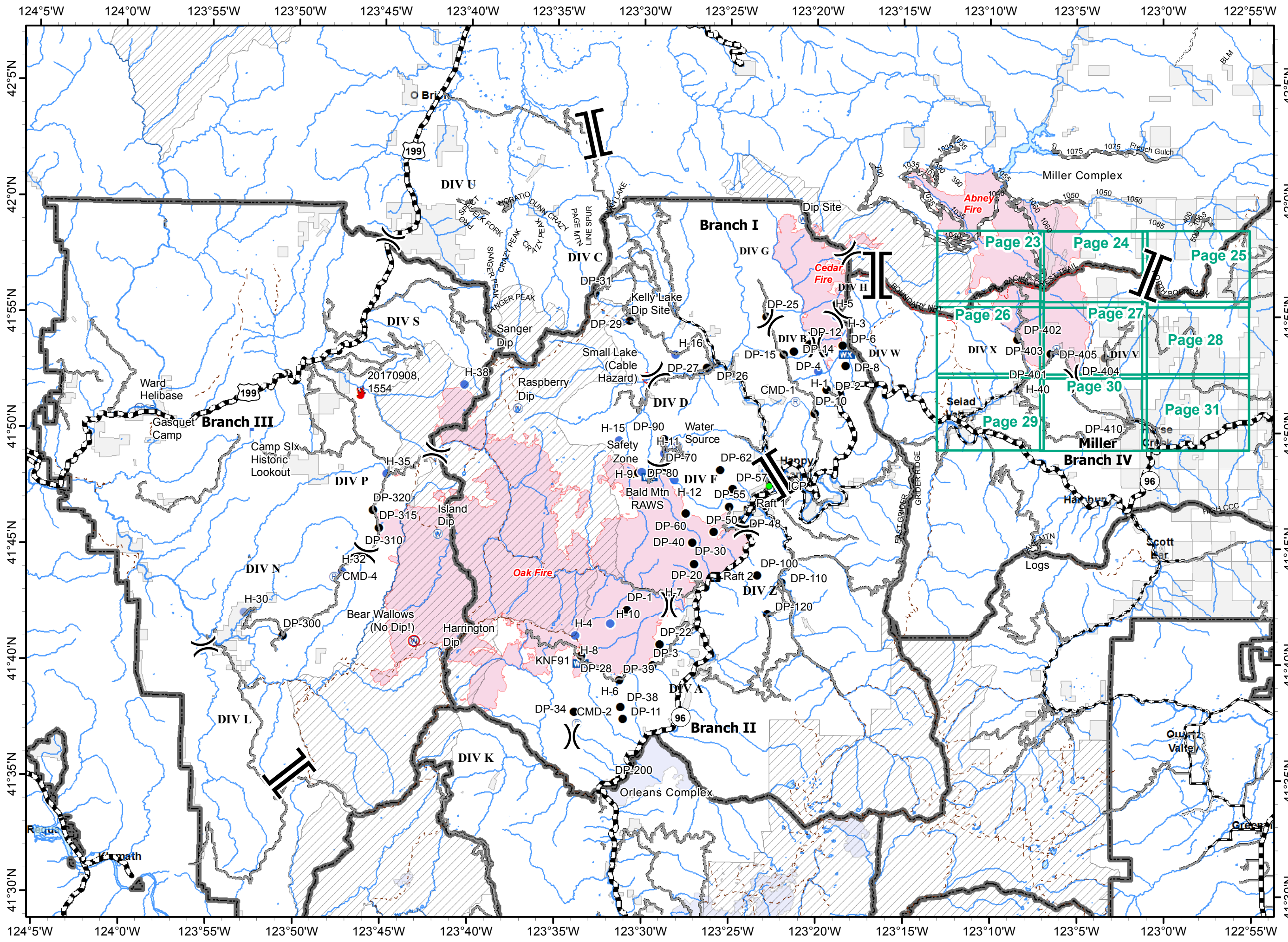


IAP MAP
BRANCH IV

Oak Fire – 87,101 Acres
 Cedar Fire - 9,050 Acres
 As of 9/7/17 1400 PDT











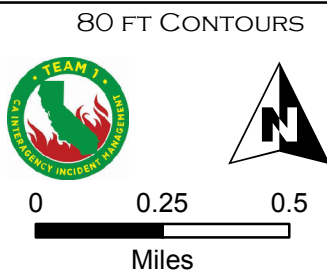
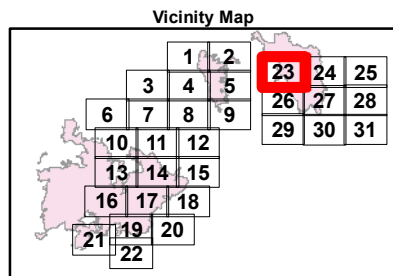
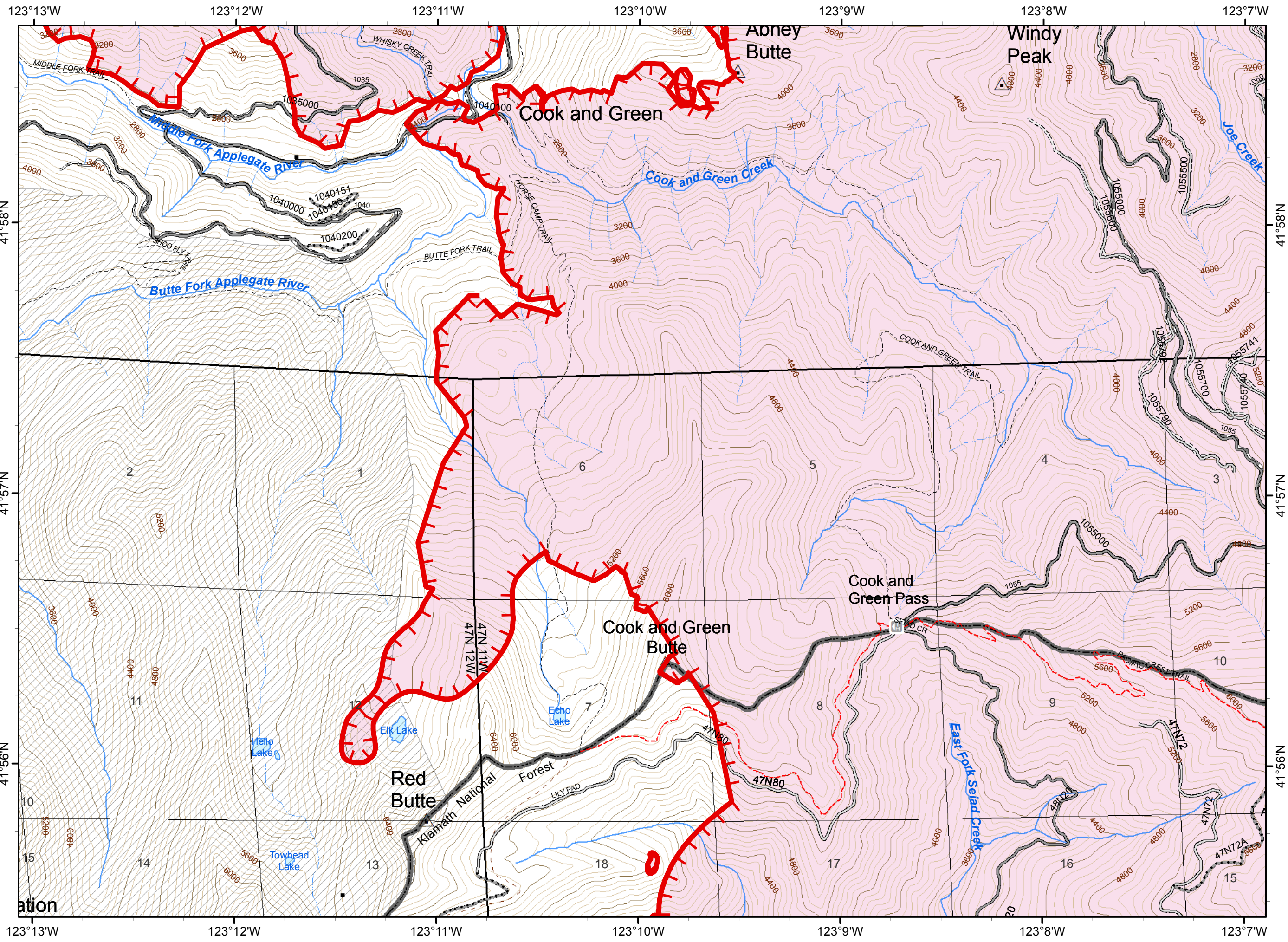
- Legend**
- () Division
 - || Branch
 - ⊙ Camp
 - Drop Point
 - 🔥 Fire Location
 - ⊕ Helibase
 - Helispot
 - ▢ Incident Command Post
 - ⚡ Lookout
 - WX Mobile Weather Unit
 - Ⓜ Repeater
 - ⚠ Safety Zone
 - Ⓜ Water Source
 - Ⓜ Restricted Water Source
 - 🚣 Raft Landing
 - 🔴 Fire Polygon
 - ▭ Ranger District Boundary
 - ▨ Wilderness
 - ▭ Ownership Private

ECLIPSE COMPLEX
CA-KNF-006098
SEPTEMBER 10, 2017
IAP MAP
BRANCH IV

Oak Fire – 87,101 Acres
 Cedar Fire - 9,050 Acres
 As of 9/7/17 1400 PDT

Page 23

-  Division
-  Branch
-  Uncontrolled Fire Edge
-  Fire Polygon
-  Ownership Private
-  Wilderness
-  Structure
-  Ranger District Boundary



ECLIPSE COMPLEX







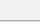



CA-KNF-006098

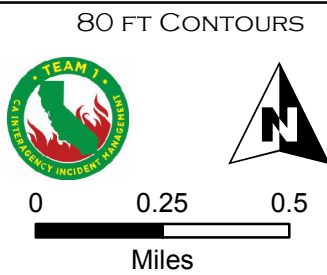
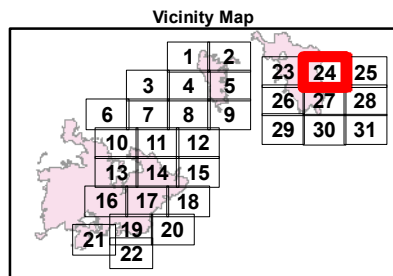
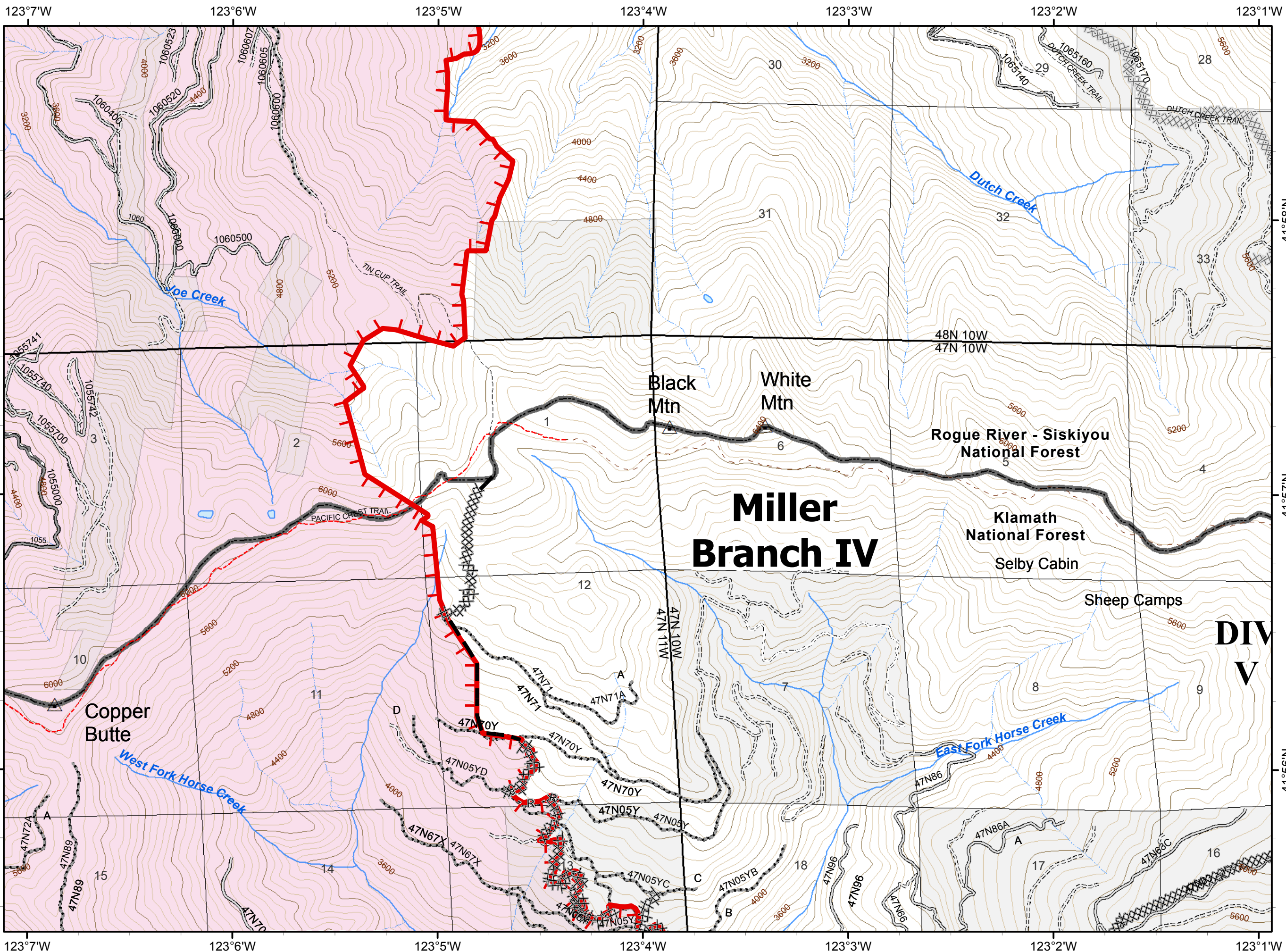
SEPTEMBER 10, 2017

IAP MAP
BRANCH IV









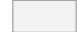




Oak Fire - 87,101 Acres
Cedar Fire - 9,050 Acres
As of 9/7/17 1400 PDT

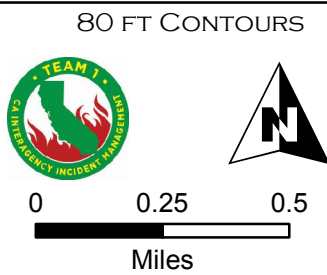
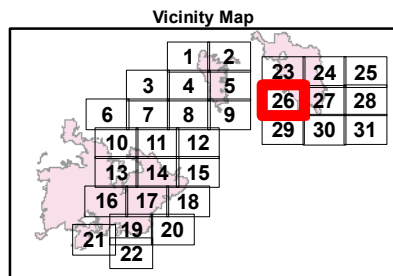
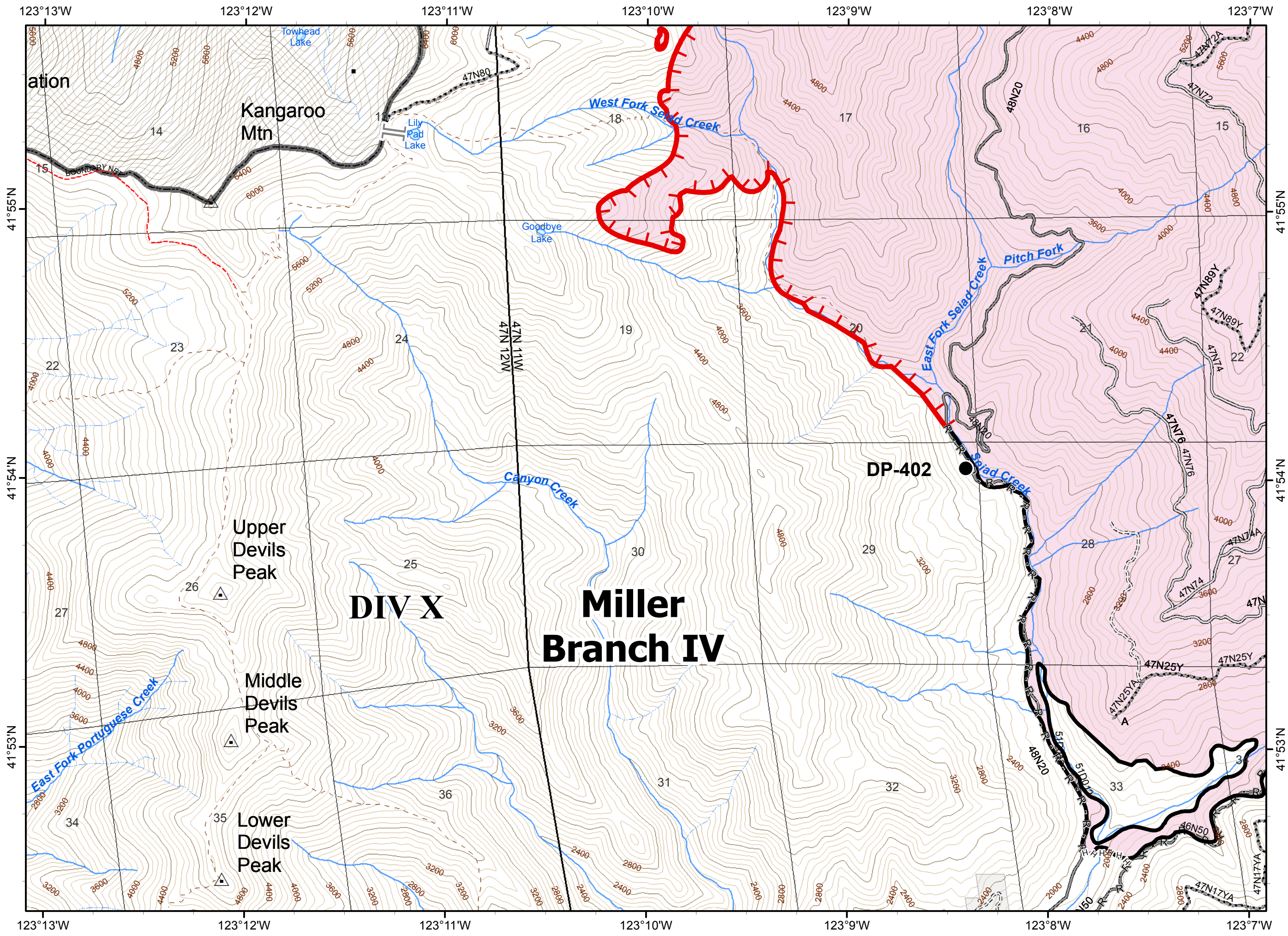
Page 24


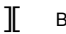














-  Division
-  Branch
-  Uncontrolled Fire Edge
-  Completed Dozer Line
- R - R** Road as Completed Line
-  Planned Fire Line
-  Fire Polygon
-  Ownership Private
-  Structure
-  Ranger District Boundary
- Miller Complex**
-  Completed Dozer Line

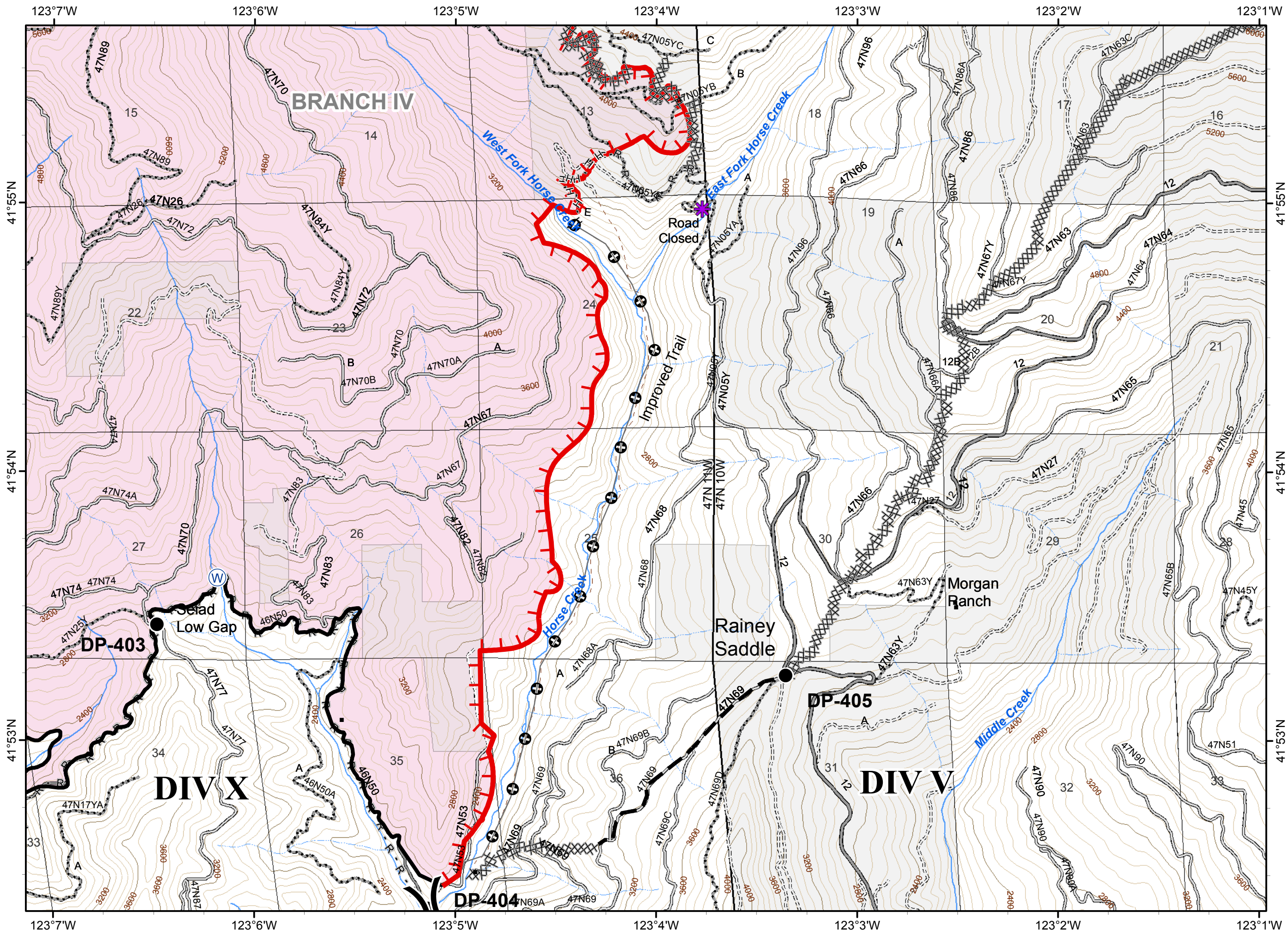
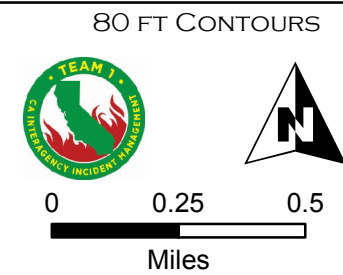
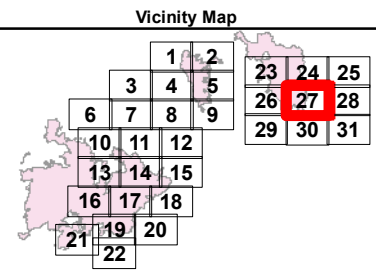


Oak Fire – 87,101 Acres
 Cedar Fire - 9,050 Acres
 As of 9/7/17 1400 PDT

-  Division
-  Branch
-  Uncontrolled Fire Edge
-  Completed Line
-  Hand Line
-  Road as Completed Line
-  Drop Point
-  Fire Polygon
-  Ownership Private
-  Wilderness
-  Structure
-  Ranger District Boundary
- Miller Complex**
-  Branch Break









-  Division
-  Branch
-  Uncontrolled Fire Edge
-  Completed Dozer Line
-  Completed Line
-  H - H Hand Line
-  R - R Road as Completed Line
-  Planned Fire Line
-  Other - Improved Trail
-  Drop Point
-  Water Source
-  Fire Polygon
-  Ownership Private
-  Structure
-  Ranger District Boundary
-  RoadWashout

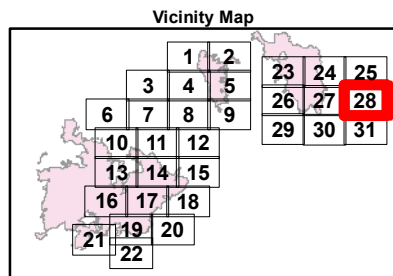
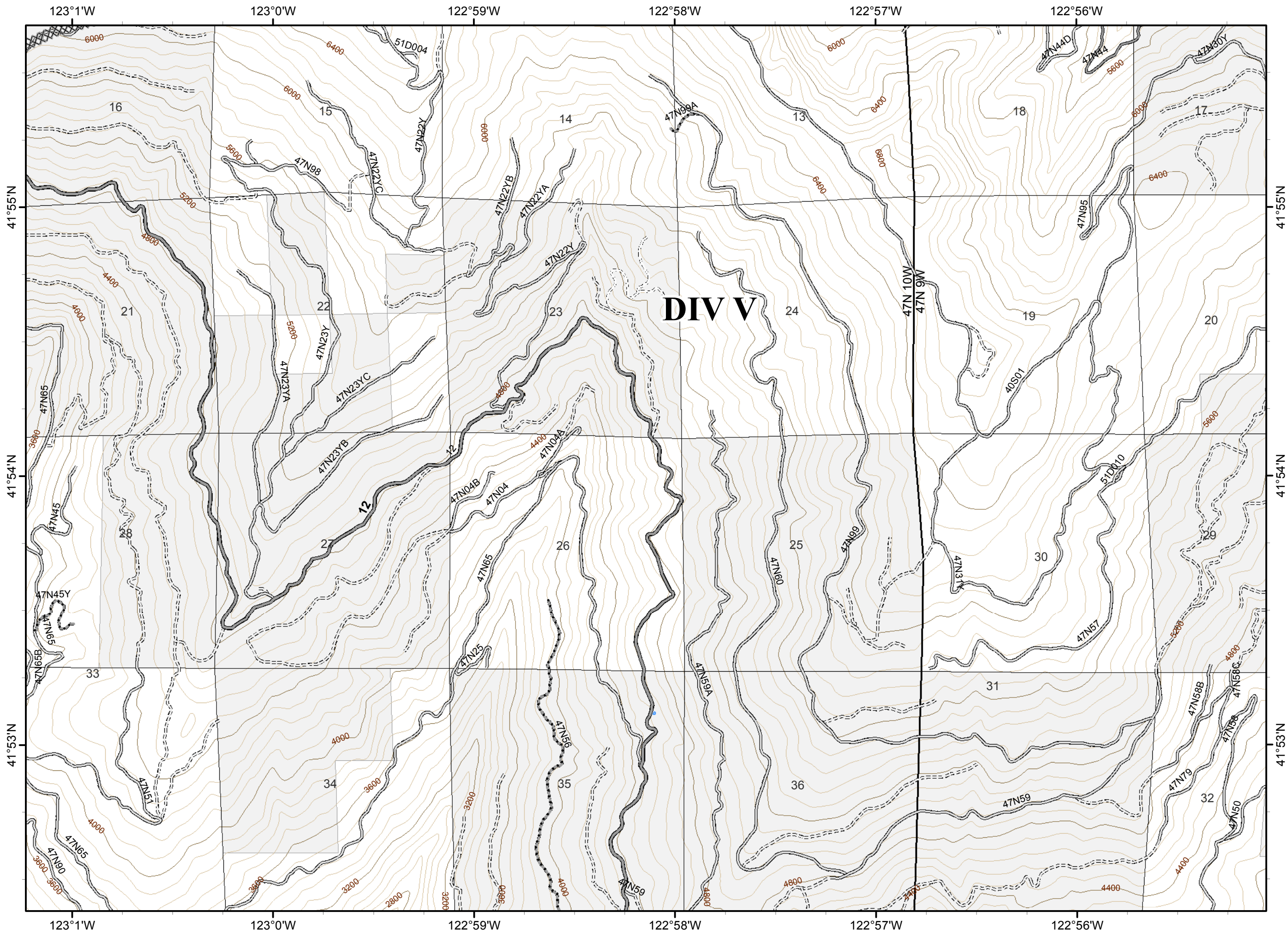


ECLIPSE COMPLEX
CA-KNF-006098
SEPTEMBER 10, 2017
IAP MAP
BRANCH IV

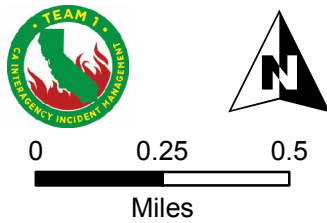
Oak Fire – 87,101 Acres
 Cedar Fire - 9,050 Acres
 As of 9/7/17 1400 PDT

Page 28

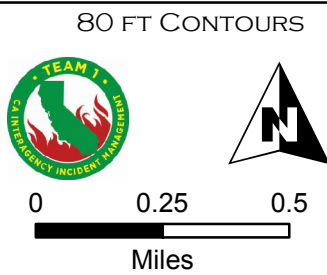
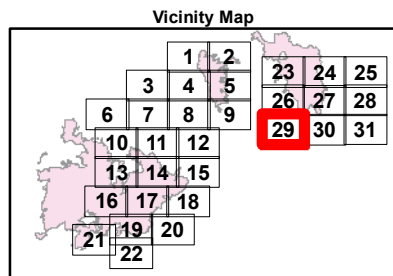
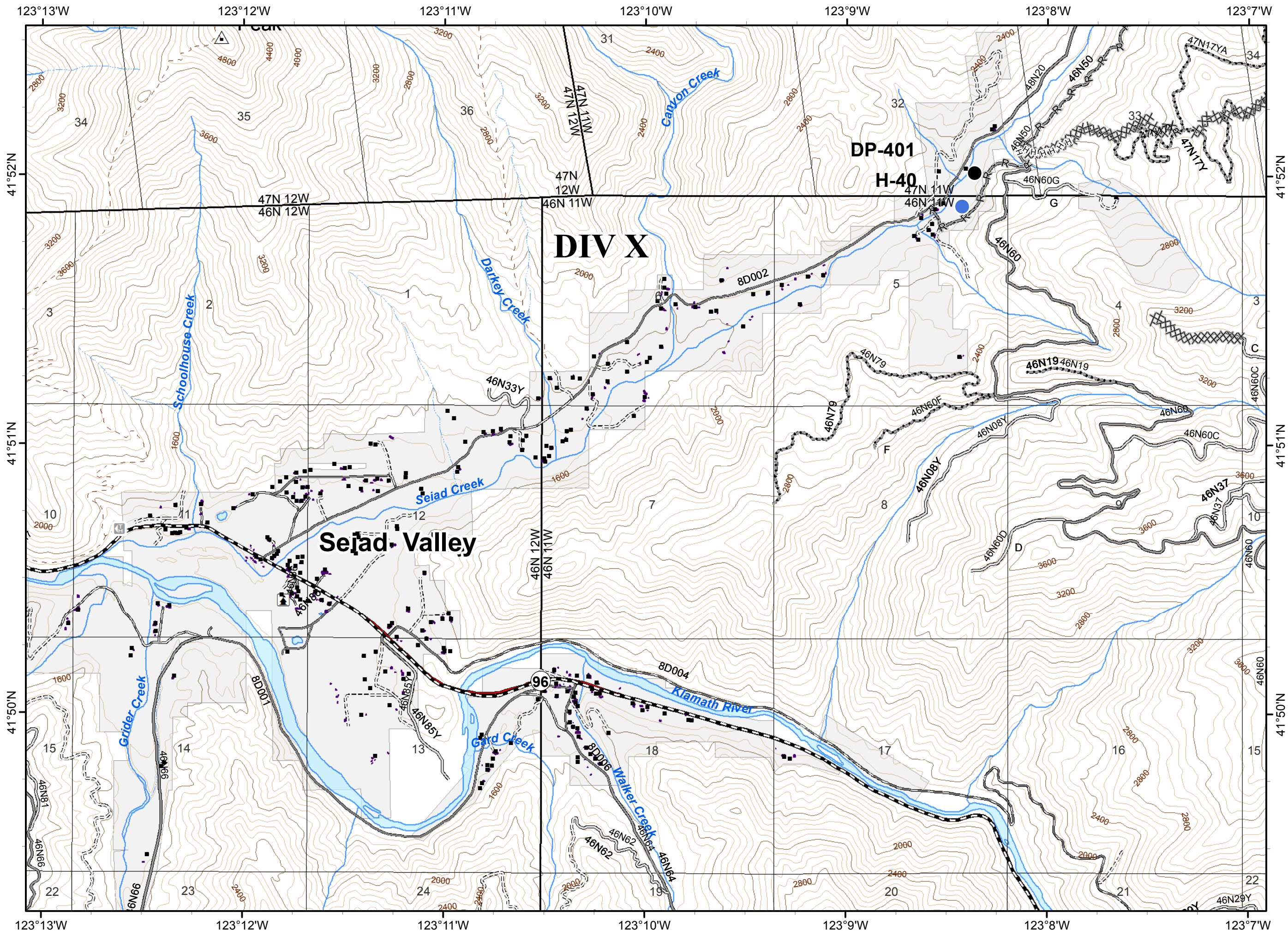
-  Division
-  Branch
-  Completed Dozer Line
-  Ownership Private
-  Structure
-  Ranger District Boundary












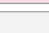



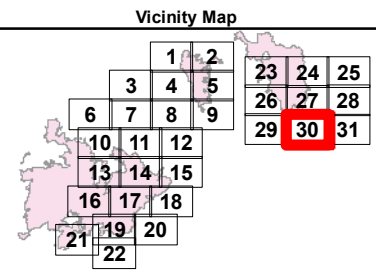
80 FT CONTOURS



-  Division
-  Branch
-  Completed Dozer Line
-  Hand Line
-  Road as Completed Line
-  Drop Point
-  Helispot
-  Ownership Private
-  Structure
-  Building Footprints
-  Ranger District Boundary



-  Division
-  Branch
-  Uncontrolled Fire Edge
-  Completed Dozer Line
-  Completed Line
-  R - R Road as Completed Line
-  Other - Improved Trail
-  Drop Point
-  Water Source
-  Fire Polygon
-  Ownership Private
-  Structure
-  Ranger District Boundary



80 FT CONTOURS

