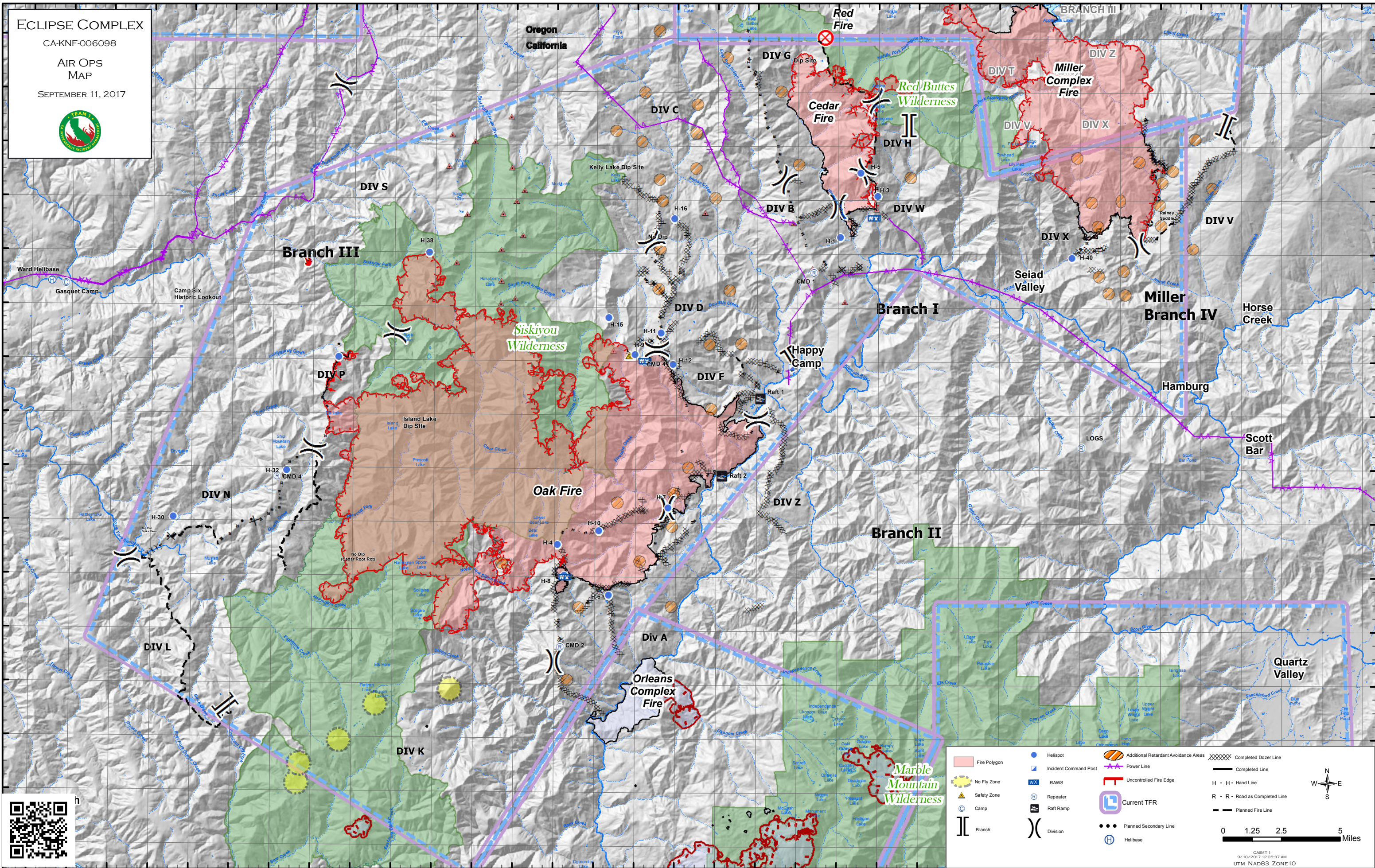


ECLIPSE COMPLEX
 CA-KNF-006098
AIR OPS
MAP
 SEPTEMBER 11, 2017

| | | | |
|--|--|--|--|
| | | | |
| | | | |
| | | | |
| | | | |
| | | | |
| | | | |

0 1.25 2.5 5 Miles

CAMT 1
9/10/2017 12:05:37 AM
UTM_NAD83_ZONE10

| PointName | Lat | Long | Column1 | PointName2 | Lat3 | Long4 |
|---------------------------|---------------|----------------|---------|---------------------------|---------------|----------------|
| Branch III New Start | 41° 51.665' N | 123° 46.252' W | | DP-401 | 41° 52.012' N | 123° 8.363' W |
| Big Flat | 41° 42.127' N | 123° 52.888' W | | DP-402 | 41° 54.043' N | 123° 8.412' W |
| Raft 1 | 41° 46.657' N | 123° 23.847' W | | DP-403 | 41° 53.431' N | 123° 6.484' W |
| Raft 2 | 41° 43.788' N | 123° 25.747' W | | DP-404 | 41° 52.375' N | 123° 5.136' W |
| Bald Mtn RAWs | 41° 48.051' N | 123° 29.620' W | | DP-405 | 41° 53.244' N | 123° 3.356' W |
| Bear Butte | 41° 48.126' N | 123° 44.770' W | | DP-410 | 41° 50.523' N | 123° 1.931' W |
| Bear Wallows (No Dip!) | 41° 40.907' N | 123° 43.095' W | | DP-48 | 41° 46.223' N | 123° 24.318' W |
| Big Flat Spike Camp | 41° 41.222' N | 123° 54.657' W | | DP-50 | 41° 45.710' N | 123° 25.886' W |
| Camp Six Historic Lookout | 41° 49.831' N | 123° 52.615' W | | DP-55 | 41° 46.795' N | 123° 24.977' W |
| CMD-1 | 41° 51.334' N | 123° 21.216' W | | DP-57 | 41° 47.557' N | 123° 24.804' W |
| CMD-2 | 41° 37.405' N | 123° 33.707' W | | DP-6 | 41° 53.751' N | 123° 18.489' W |
| CMD-3 | 41° 48.017' N | 123° 29.605' W | | DP-60 | 41° 46.499' N | 123° 27.481' W |
| CMD-4 | 41° 43.687' N | 123° 47.728' W | | DP-62 | 41° 48.380' N | 123° 25.521' W |
| Dip Site | 41° 59.207' N | 123° 20.857' W | | DP-70 | 41° 48.459' N | 123° 29.026' W |
| DP-1 | 41° 42.340' N | 123° 30.853' W | | DP-8 | 41° 52.882' N | 123° 18.320' W |
| DP-10 | 41° 50.833' N | 123° 20.069' W | | DP-80 | 41° 48.228' N | 123° 30.250' W |
| DP-100 | 41° 43.863' N | 123° 23.382' W | | DP-90 | 41° 49.710' N | 123° 28.763' W |
| DP-11 | 41° 37.626' N | 123° 31.046' W | | Gasquet Camp | 41° 50.777' N | 123° 58.286' W |
| DP-110 | 41° 43.553' N | 123° 21.949' W | | H-1 | 41° 52.663' N | 123° 19.927' W |
| DP-12 | 41° 53.814' N | 123° 20.393' W | | H-10 | 41° 41.718' N | 123° 31.822' W |
| DP-120 | 41° 42.184' N | 123° 22.785' W | | H-11 | 41° 49.078' N | 123° 28.779' W |
| DP-14 | 41° 53.482' N | 123° 21.296' W | | H-12 | 41° 47.929' N | 123° 28.185' W |
| DP-15 | 41° 53.365' N | 123° 21.878' W | | H-15 | 41° 49.640' N | 123° 31.382' W |
| DP-2 | 41° 51.855' N | 123° 19.397' W | | H-16 | 41° 53.330' N | 123° 28.150' W |
| DP-20 | 41° 43.336' N | 123° 26.342' W | | H-3 | 41° 54.190' N | 123° 18.078' W |
| DP-200 | 41° 34.882' N | 123° 31.508' W | | H-38 | 41° 52.000' N | 123° 40.300' W |
| DP-22 | 41° 40.845' N | 123° 28.955' W | | H-4 | 41° 41.202' N | 123° 33.860' W |
| DP-25 | 41° 55.002' N | 123° 22.870' W | | H-40 | 41° 51.888' N | 123° 8.426' W |
| DP-26 | 41° 52.957' N | 123° 25.762' W | | H-5 | 41° 55.049' N | 123° 18.918' W |
| DP-27 | 41° 52.787' N | 123° 26.315' W | | H-6 | 41° 39.337' N | 123° 31.319' W |
| DP-28 | 41° 40.331' N | 123° 33.451' W | | H-7 | 41° 42.563' N | 123° 28.417' W |
| DP-29 | 41° 54.787' N | 123° 30.767' W | | H-8 | 41° 40.056' N | 123° 33.526' W |
| DP-3 | 41° 39.945' N | 123° 29.347' W | | H-9 | 41° 48.276' N | 123° 30.084' W |
| DP-30 | 41° 44.339' N | 123° 26.981' W | | Harrington Dip | 41° 40.378' N | 123° 41.431' W |
| DP-300 | 41° 41.103' N | 123° 50.632' W | | ICP | 41° 47.834' N | 123° 22.272' W |
| DP-31 | 41° 55.975' N | 123° 32.762' W | | Island Dip | 41° 45.557' N | 123° 41.787' W |
| DP-310 | 41° 44.722' N | 123° 45.978' W | | Kelly Lake Dip Site | 41° 54.815' N | 123° 31.047' W |
| DP-315 | 41° 45.805' N | 123° 45.158' W | | KNF91 | 41° 40.005' N | 123° 33.517' W |
| DP-320 | 41° 46.557' N | 123° 45.512' W | | Logs | 41° 44.854' N | 123° 7.946' W |
| DP-34 | 41° 37.928' N | 123° 33.838' W | | Raspberry Dip | 41° 50.998' N | 123° 37.219' W |
| DP-38 | 41° 38.143' N | 123° 31.179' W | | Sanger Dip | 41° 54.109' N | 123° 38.958' W |
| DP-39 | 41° 39.285' N | 123° 31.269' W | | Ship Mtn | 41° 43.903' N | 123° 47.287' W |
| DP-4 | 41° 53.393' N | 123° 19.575' W | | Small Lake (Cable Hazard) | 41° 52.334' N | 123° 29.734' W |
| DP-40 | 41° 45.258' N | 123° 27.089' W | | Ward Helibase | 41° 50.867' N | 123° 59.017' W |
| | | | | Water Source | 41° 49.392' N | 123° 28.012' W |