



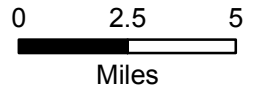
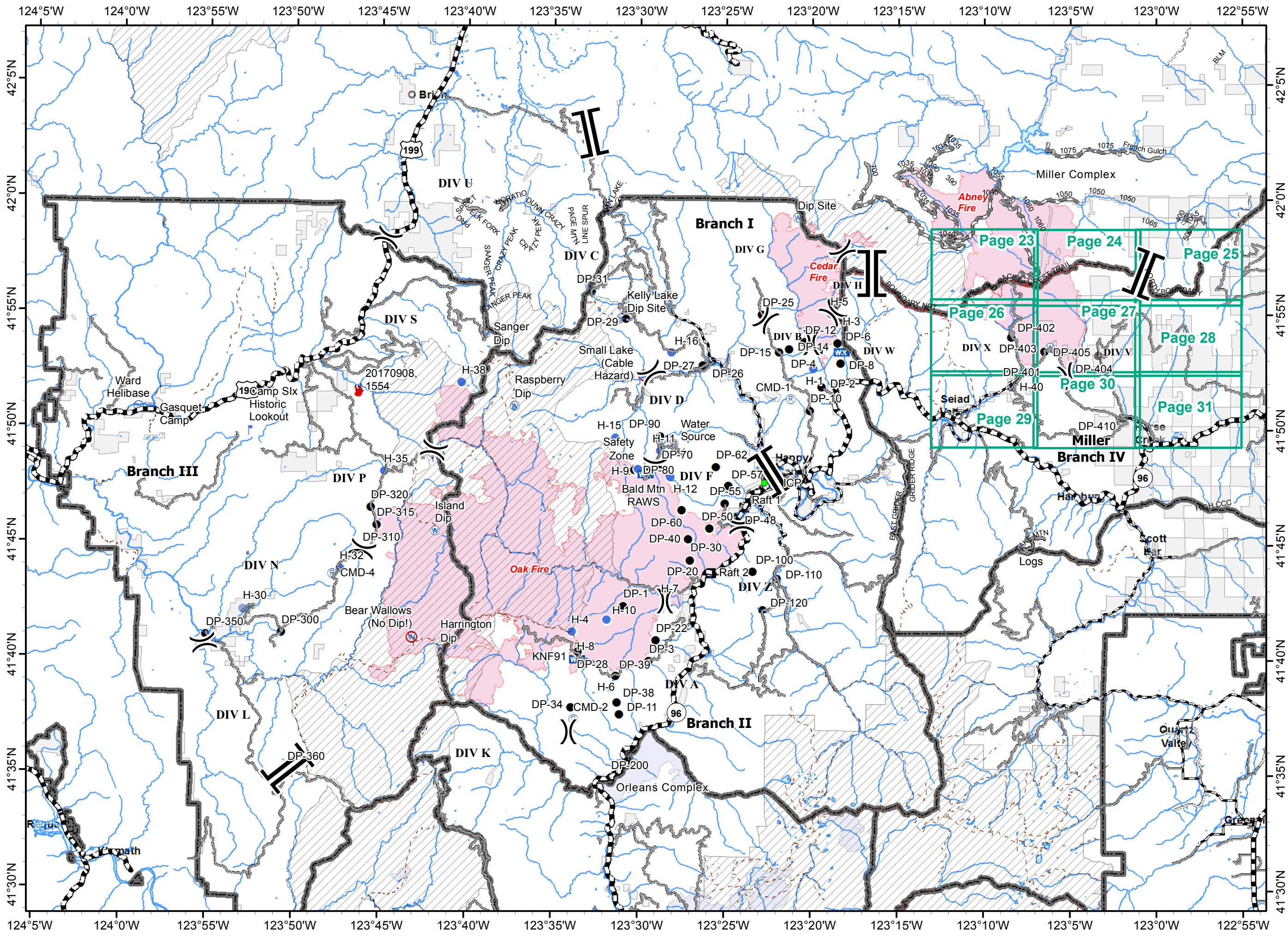
IAP MAP
BRANCH IV

Oak Fire – 87,101 Acres
 Cedar Fire - 9,050 Acres
 As of 9/7/17 1400 PDT

Legend

- () Division
- [] Branch
- ⊙ Camp
- Drop Point
- 🔥 Fire Location
- ⊕ Helibase
- Helispot
- ▣ Incident Command Post
- ⚡ Lookout
- WX Mobile Weather Unit
- Ⓡ Repeater
- ⚠ Safety Zone
- Ⓜ Water Source
- Ⓜ Restricted Water Source
- 🚣 Raft Landing
- 🔴 Fire Polygon
- ▭ Ranger District Boundary
- ▨ Wilderness
- ▭ Ownership Private

NAD 1983. UTM ZONE 10 N



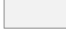

Map navigation grid with page numbers:

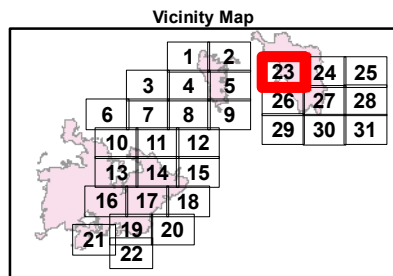
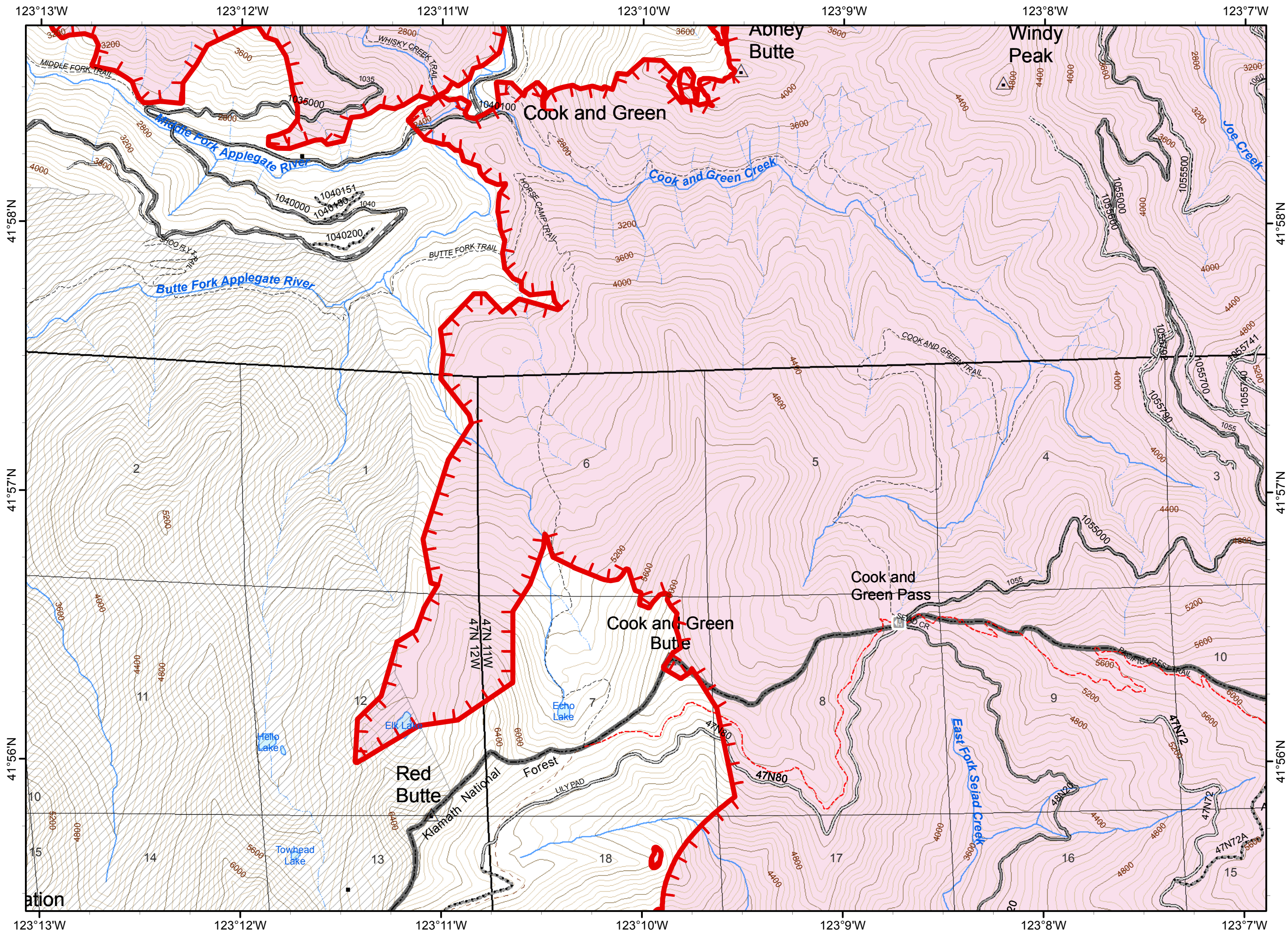
- Page 23
- Page 24
- Page 25
- Page 26
- Page 27
- Page 28
- Page 29
- Page 30
- Page 31

ECLIPSE COMPLEX
CA-KNF-006098
SEPTEMBER 11, 2017
IAP MAP
BRANCH IV

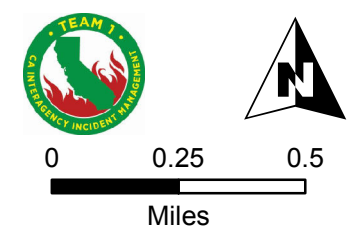
Oak Fire – 87,101 Acres
 Cedar Fire - 9,050 Acres
 As of 9/7/17 1400 PDT

Page 23

- () Division
- || Branch
-  Uncontrolled Fire Edge
-  Fire Polygon
-  Ownership Private
-  Wilderness
- Structure



80 FT CONTOURS
 NAD 1983. UTM ZONE 10 N



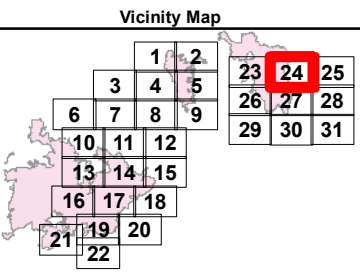
ECLIPSE COMPLEX
CA-KNF-006098
SEPTEMBER 11, 2017
IAP MAP
BRANCH IV

Oak Fire – 87,101 Acres
 Cedar Fire - 9,050 Acres
 As of 9/7/17 1400 PDT

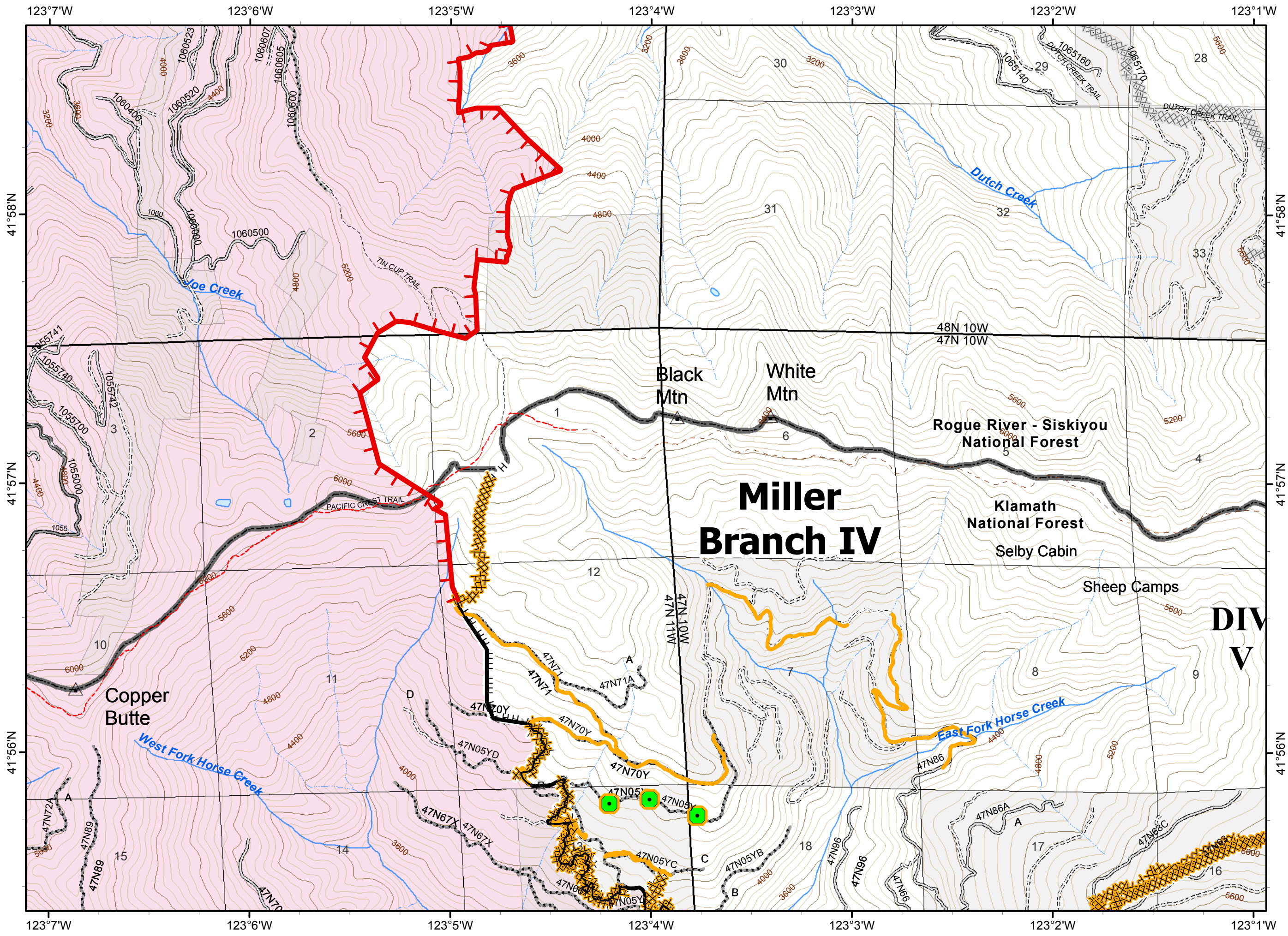
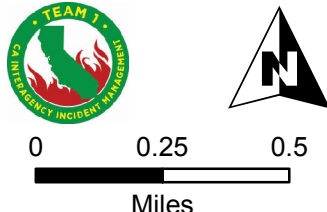
Page 24

- () Division
- || Branch
- Uncontrolled Fire Edge
- Completed Dozer Line
- H HH Hand Line
- Completed Line
- R - R Road as Completed Line
- Fire Polygon
- Ownership Private
- Structure
- Miller Complex**
- Completed Dozer Line

- Needs Repair**
- Turnaround
- Pump
- Needs Repair**
- Dozerline
- Road Repair



80 FT CONTOURS
 NAD 1983. UTM ZONE 10 N



DIV V

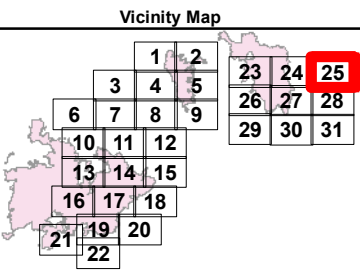
ECLIPSE COMPLEX
CA-KNF-006098
SEPTEMBER 11, 2017
IAP MAP
BRANCH IV

Oak Fire – 87,101 Acres
 Cedar Fire - 9,050 Acres
 As of 9/7/17 1400 PDT

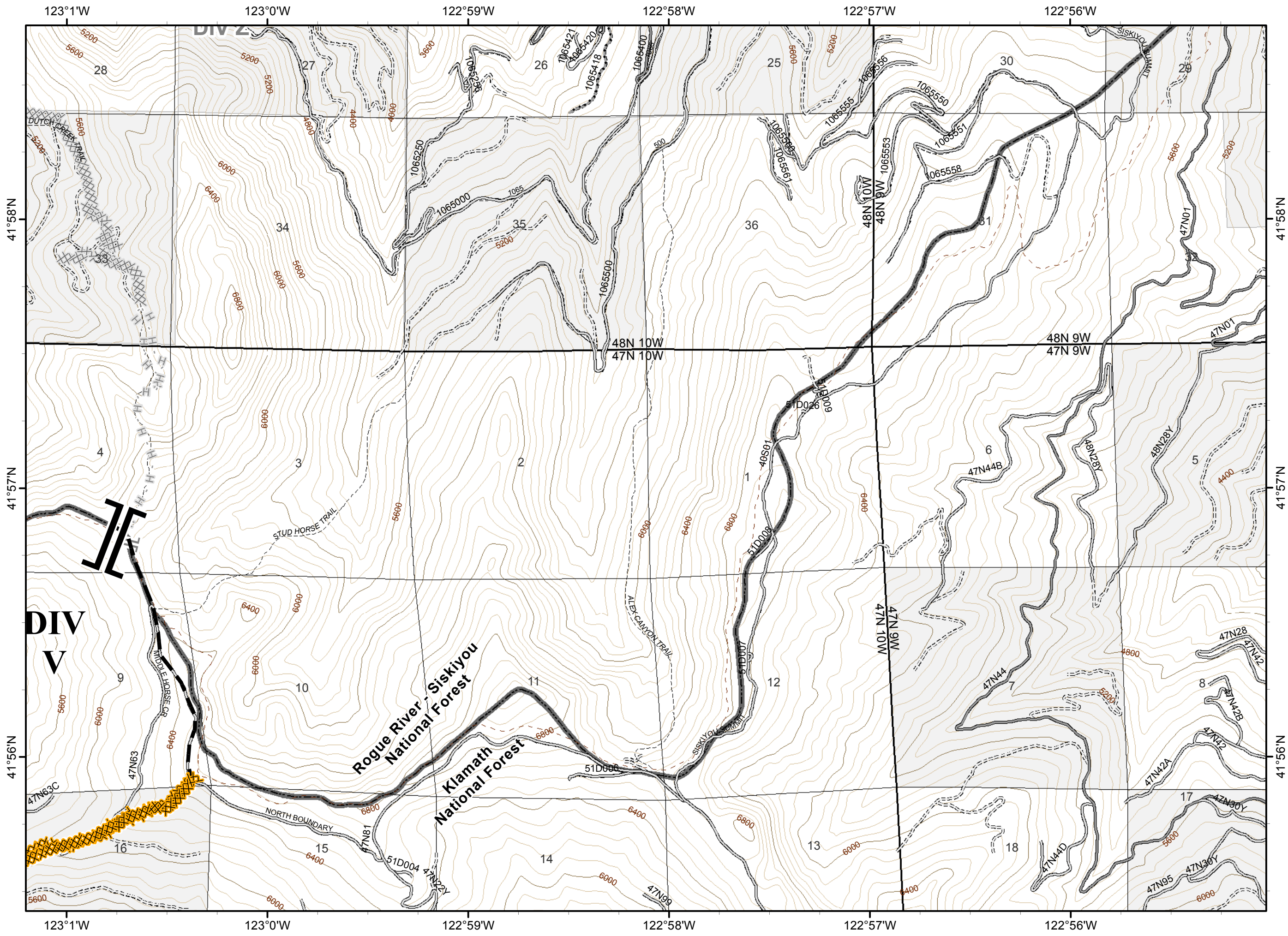
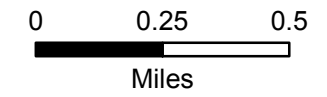
Page 25

- Division
- Branch
- Completed Dozer Line
- Planned Fire Line
- Ownership Private
- Structure
- Miller Complex**
- Branch Break
- Miller Complex**
- Completed Dozer Line
- Completed Hand Line

- Needs Repair**
- Dozerline



80 FT CONTOURS
 NAD 1983. UTM ZONE 10 N



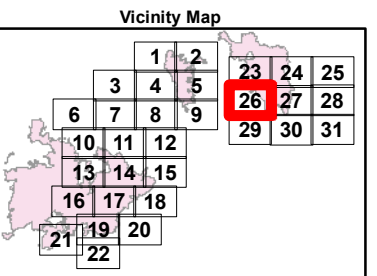
ECLIPSE COMPLEX
CA-KNF-006098
SEPTEMBER 11, 2017
IAP MAP
BRANCH IV

Oak Fire – 87,101 Acres
 Cedar Fire - 9,050 Acres
 As of 9/7/17 1400 PDT

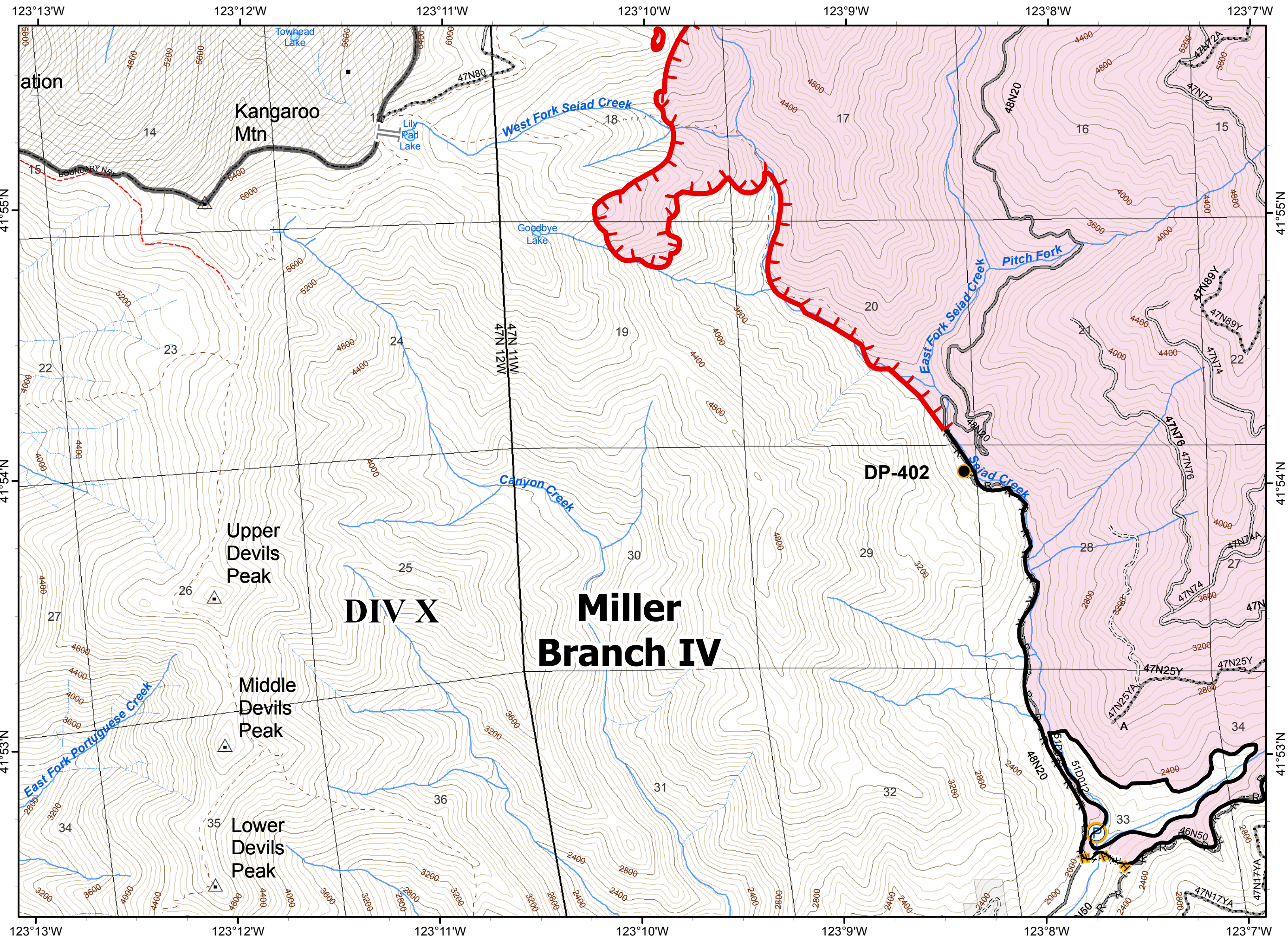
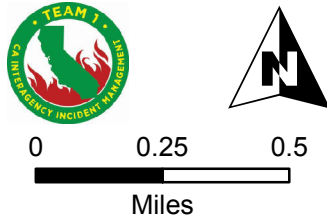
Page 26

- () Division
- || Branch
- Uncontrolled Fire Edge
- H HH Hand Line
- Completed Line
- R - R Road as Completed Line
- Fire Polygon
- Ownership Private
- Wilderness
- Structure
- Miller Complex**
- Branch Break

- Needs Repair**
- Drop Point
- Pump
- Needs Repair**
- Handline



80 FT CONTOURS
 NAD 1983. UTM ZONE 10 N



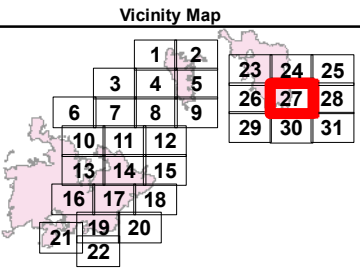
- () Division
- || Branch
- Uncontrolled Fire Edge
- Completed Dozer Line
- H HH Hand Line
- Completed Line
- R - R Road as Completed Line
- Planned Fire Line
- Other
- Water Source
- Fire Polygon
- Ownership Private
- Structure

Needs Repair

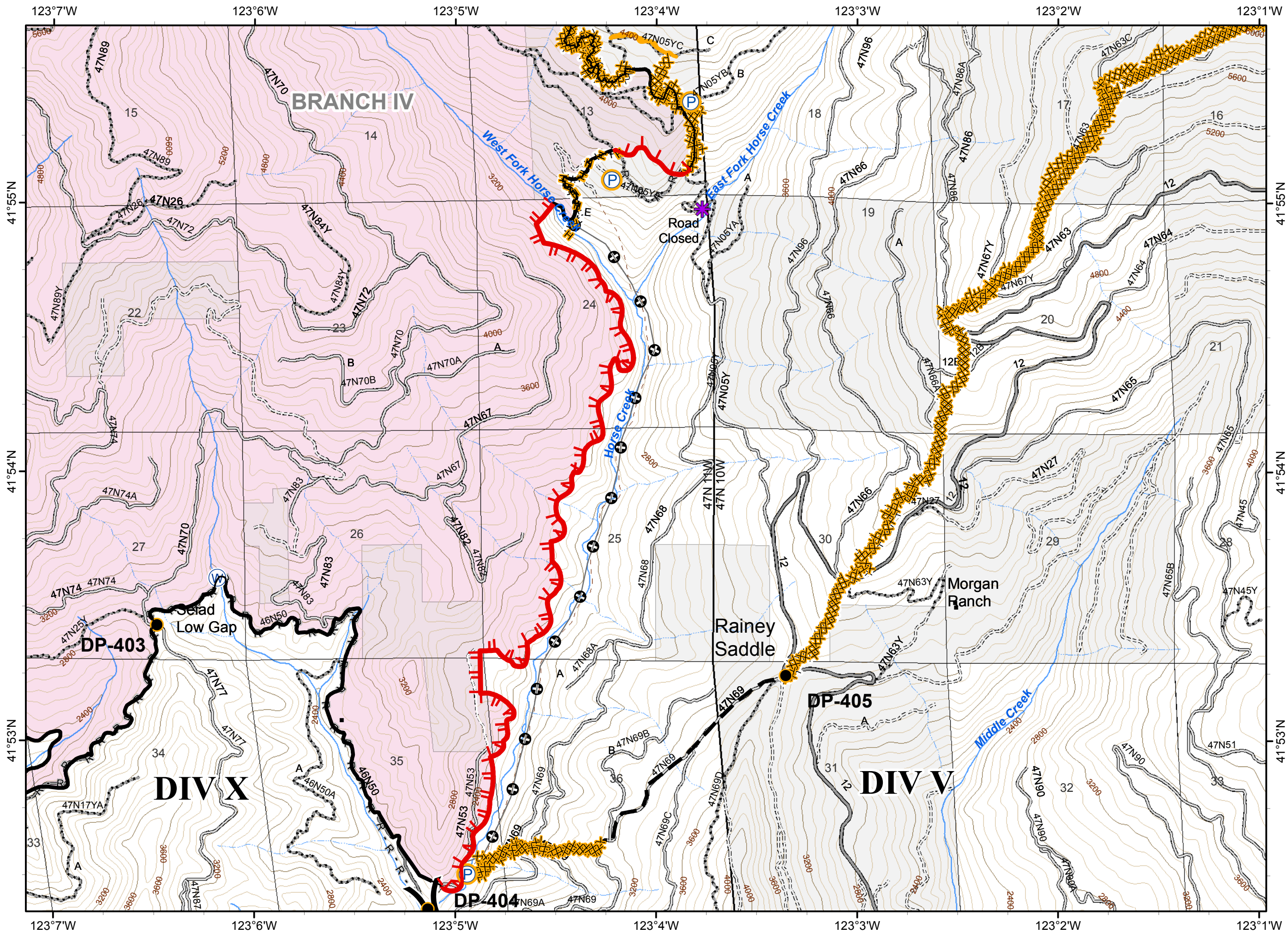
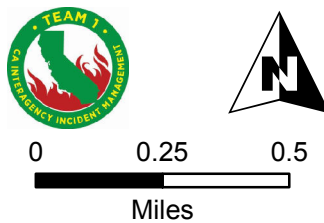
- Drop Point
- Pump

Needs Repair

- Dozerline
- Handline
- Road Repair






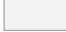

80 FT CONTOURS
NAD 1983. UTM ZONE 10 N




ECLIPSE COMPLEX
CA-KNF-006098
SEPTEMBER 11, 2017
IAP MAP
BRANCH IV

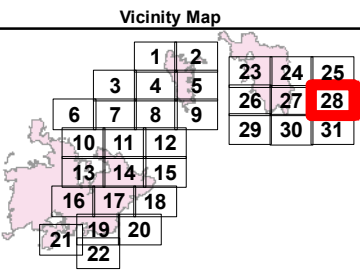
Oak Fire – 87,101 Acres
 Cedar Fire - 9,050 Acres
 As of 9/7/17 1400 PDT

Page 28

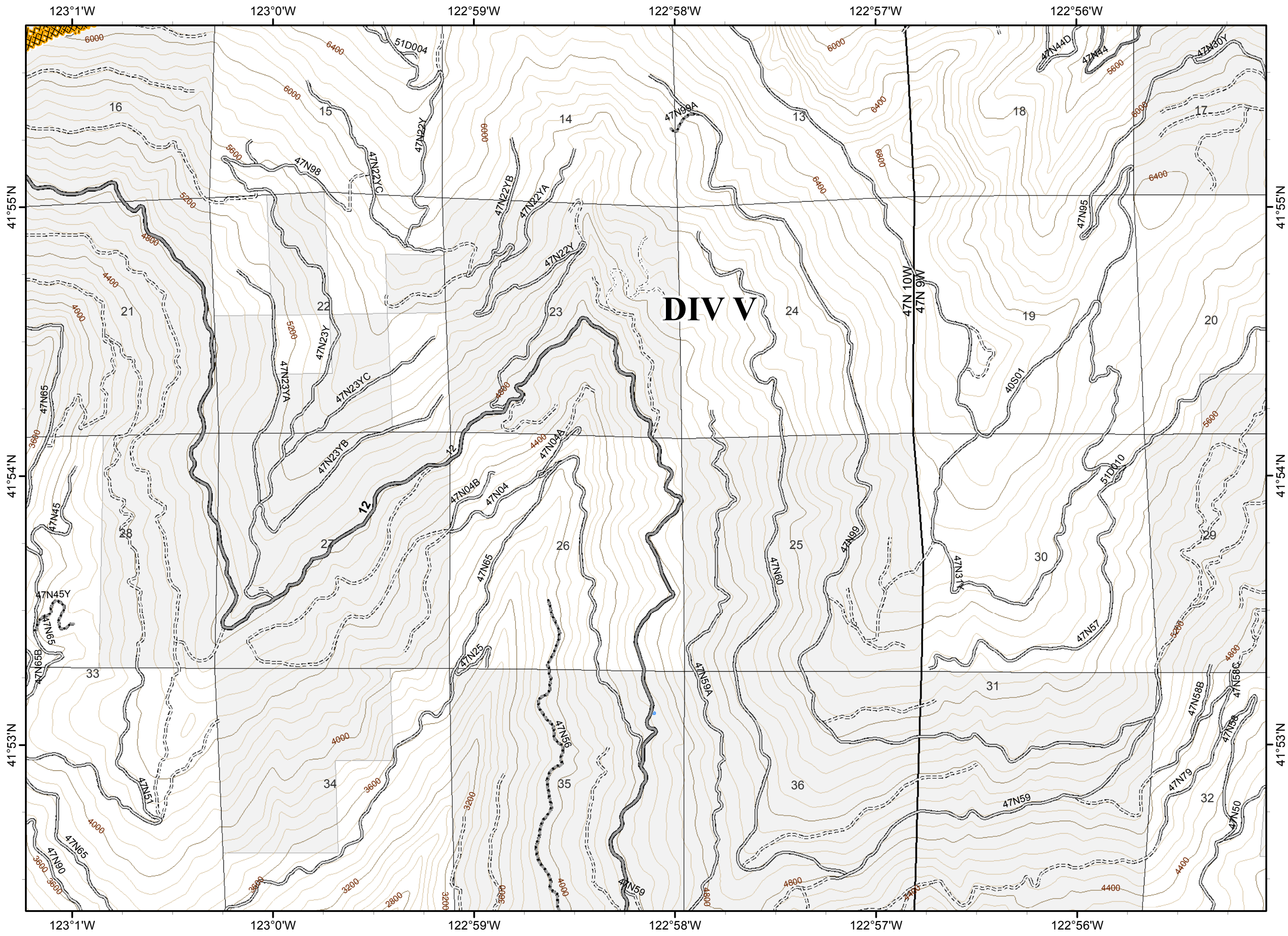
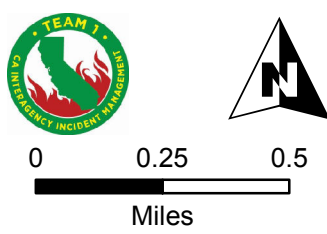
-  Division
-  Branch
-  Completed Dozer Line
-  Ownership Private
-  Structure

Needs Repair

-  Dozerline



80 FT CONTOURS
 NAD 1983. UTM ZONE 10 N



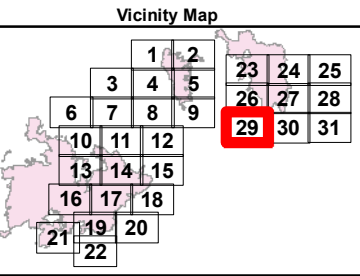
- () Division
- || Branch
- XXXXX Completed Dozer Line
- H HH Hand Line
- R - R Road as Completed Line
- Ownership Private
- Structure

Needs Repair

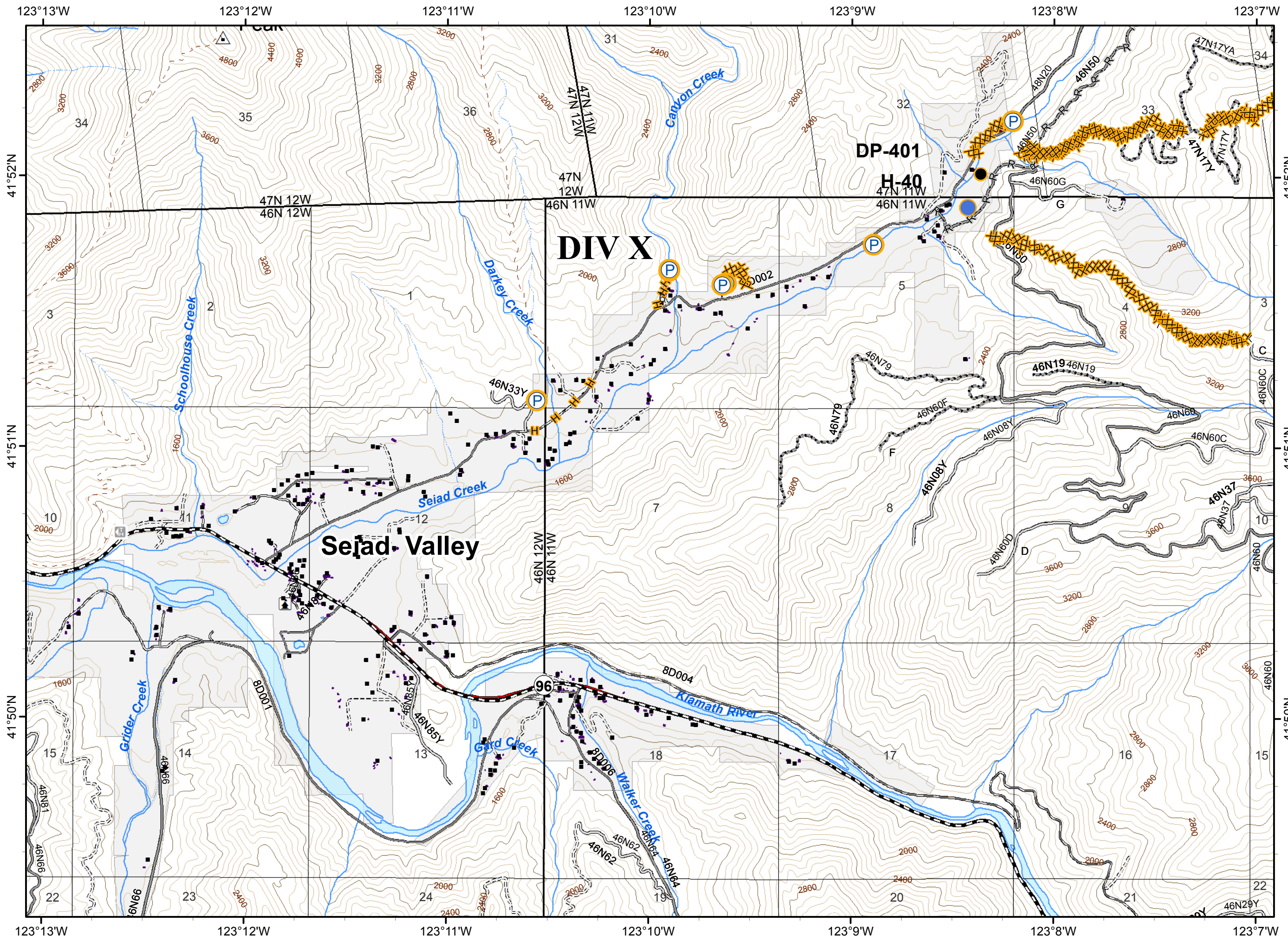
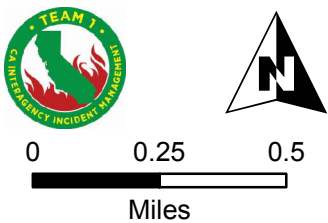
- Drop Point
- Helispot
- P Pump

Needs Repair

- XXXXX Dozerline
- H - Handline

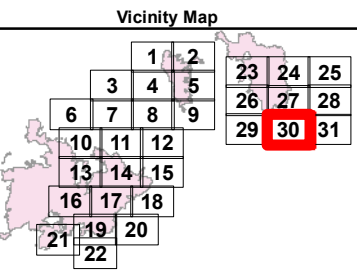


80 FT CONTOURS
 NAD 1983. UTM ZONE 10 N

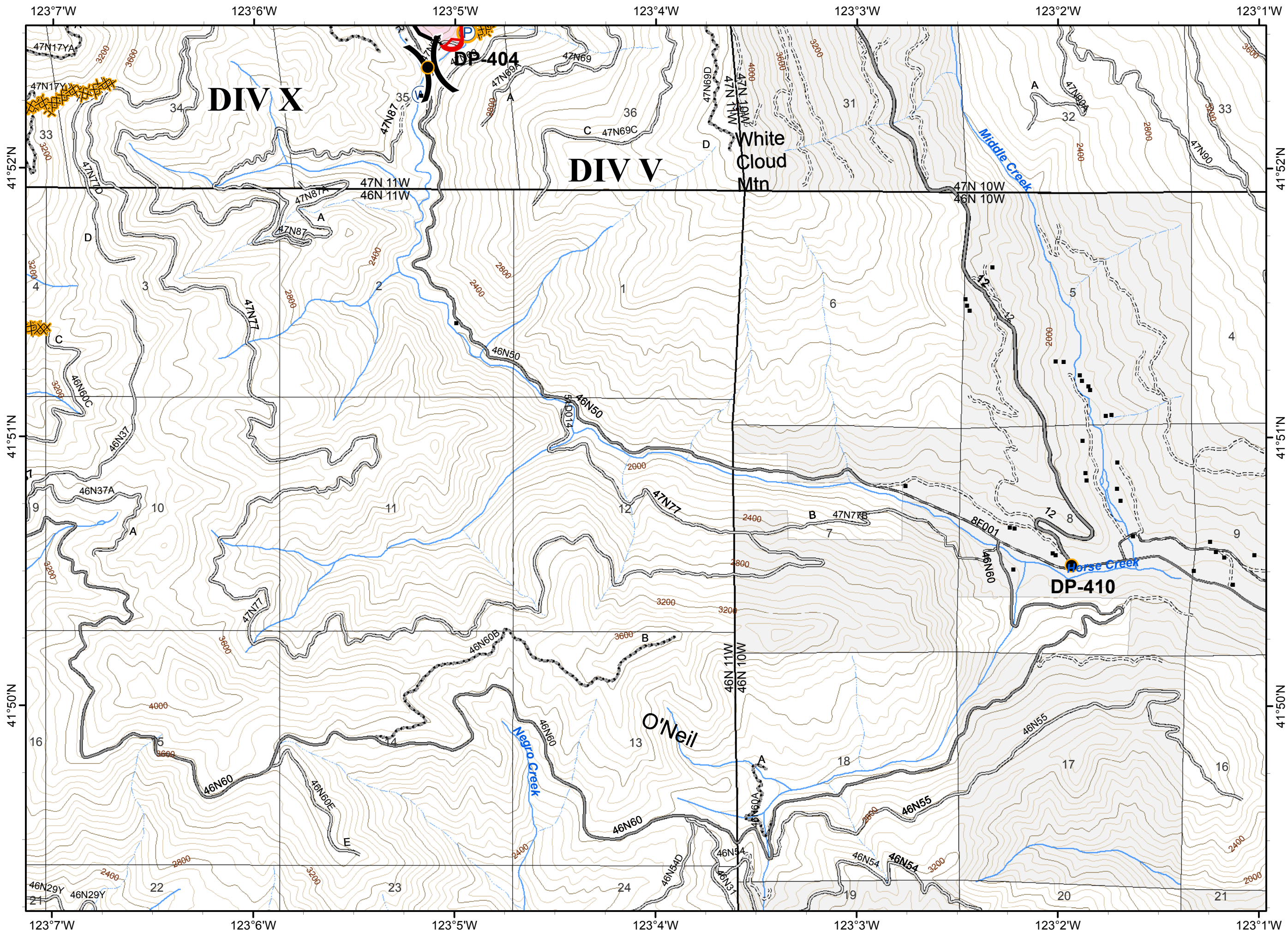
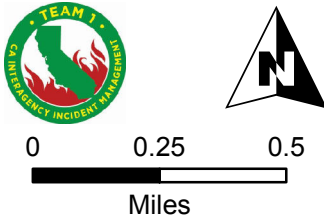


- Division
- Branch
- Uncontrolled Fire Edge
- Completed Dozer Line
- Completed Line
- R - R Road as Completed Line
- Other
- Water Source
- Fire Polygon
- Ownership Private
- Structure

- Needs Repair**
- Drop Point
 - Pump
- Needs Repair**
- Dozerline



80 FT CONTOURS
 NAD 1983. UTM ZONE 10 N

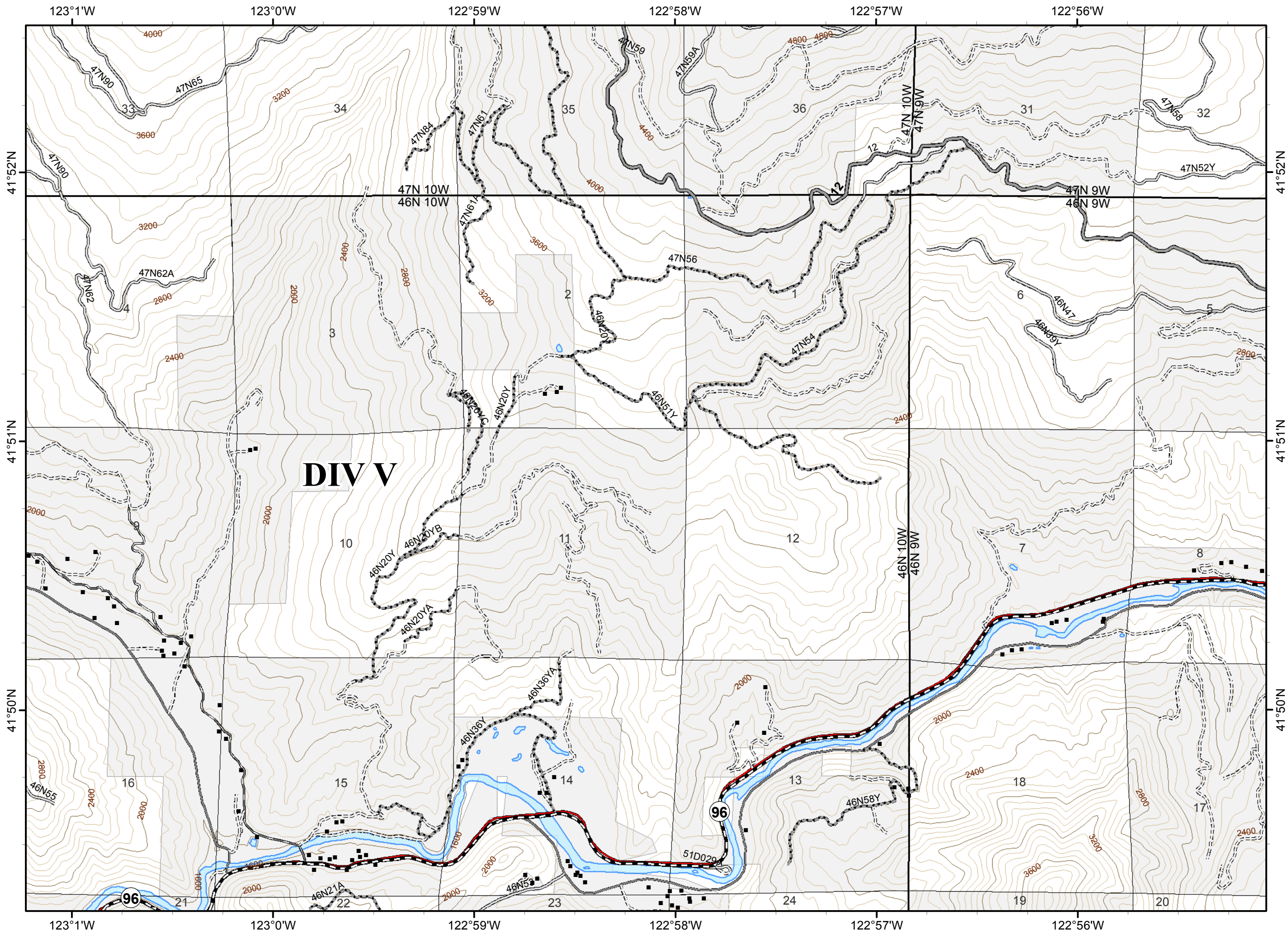


ECLIPSE COMPLEX
CA-KNF-006098
SEPTEMBER 11, 2017
IAP MAP
BRANCH IV

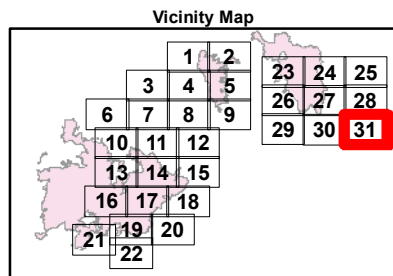
Oak Fire – 87,101 Acres
 Cedar Fire - 9,050 Acres
 As of 9/7/17 1400 PDT

Page 31

- () Division
- || Branch
- Ownership Private
- Structure



DIV V



80 FT CONTOURS
 NAD 1983. UTM ZONE 10 N

