

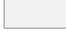

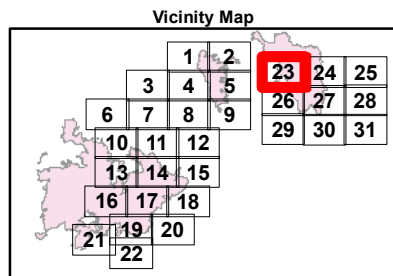
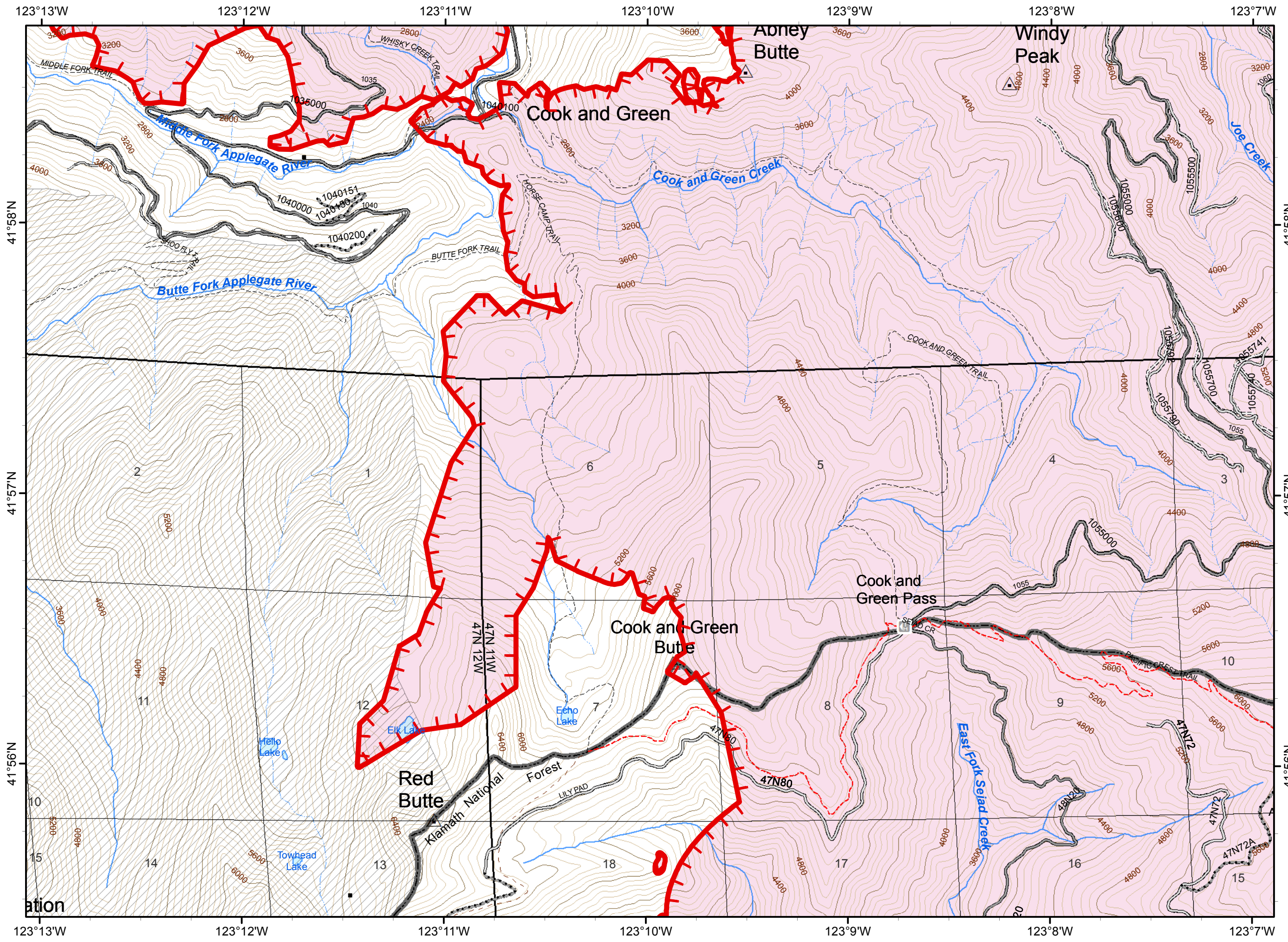


**ECLIPSE COMPLEX**  
**CA-KNF-006098**  
**SEPTEMBER 11, 2017**  
**IAP MAP**  
**BRANCH IV**

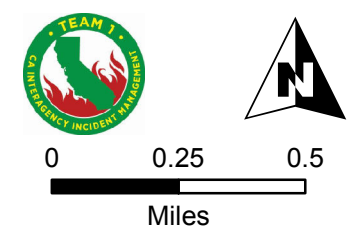
Oak Fire – 87,101 Acres  
 Cedar Fire - 9,050 Acres  
 As of 9/7/17 1400 PDT

**Page 23**

- ( ) Division
- || Branch
-  Uncontrolled Fire Edge
-  Fire Polygon
-  Ownership Private
-  Wilderness
- Structure



80 FT CONTOURS  
 NAD 1983. UTM ZONE 10 N





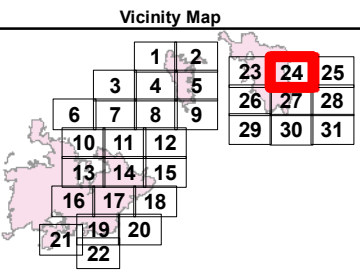
**ECLIPSE COMPLEX**  
**CA-KNF-006098**  
**SEPTEMBER 11, 2017**  
**IAP MAP**  
**BRANCH IV**

Oak Fire – 87,101 Acres  
 Cedar Fire - 9,050 Acres  
 As of 9/7/17 1400 PDT

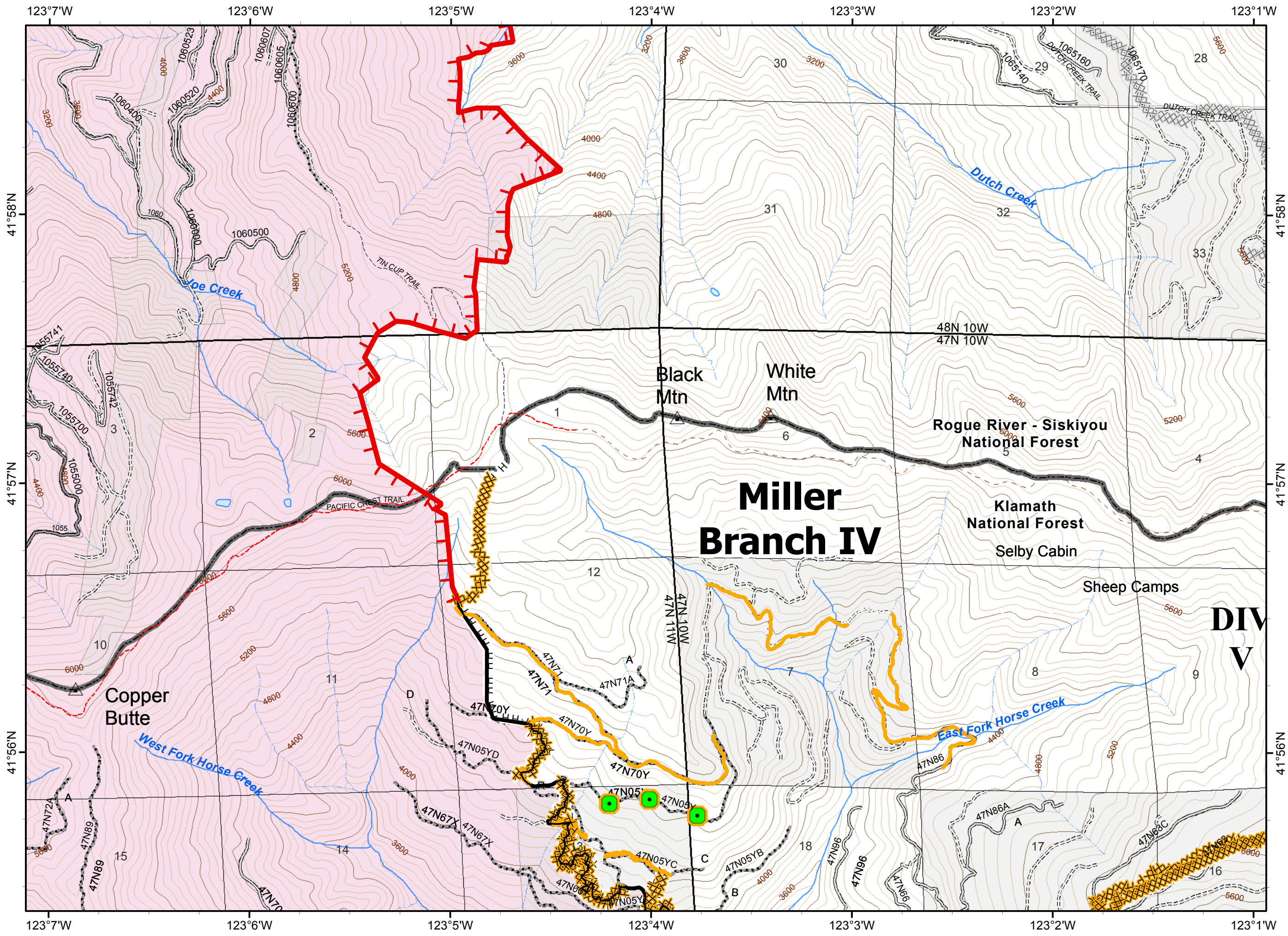
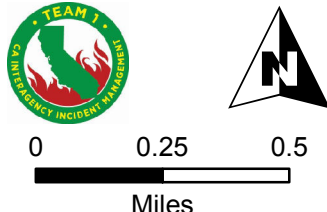
**Page 24**

- ( ) Division
- || Branch
- Uncontrolled Fire Edge
- Completed Dozer Line
- H HH Hand Line
- Completed Line
- R - R Road as Completed Line
- Fire Polygon
- Ownership Private
- Structure
- Miller Complex**
- Completed Dozer Line

- Needs Repair**
- Turnaround
- Pump
- Needs Repair**
- Dozerline
- Road Repair



80 FT CONTOURS  
 NAD 1983. UTM ZONE 10 N



**DIV V**



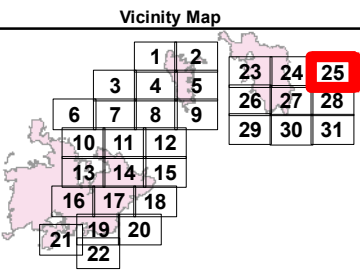
**ECLIPSE COMPLEX**  
**CA-KNF-006098**  
**SEPTEMBER 11, 2017**  
**IAP MAP**  
**BRANCH IV**

Oak Fire – 87,101 Acres  
 Cedar Fire - 9,050 Acres  
 As of 9/7/17 1400 PDT

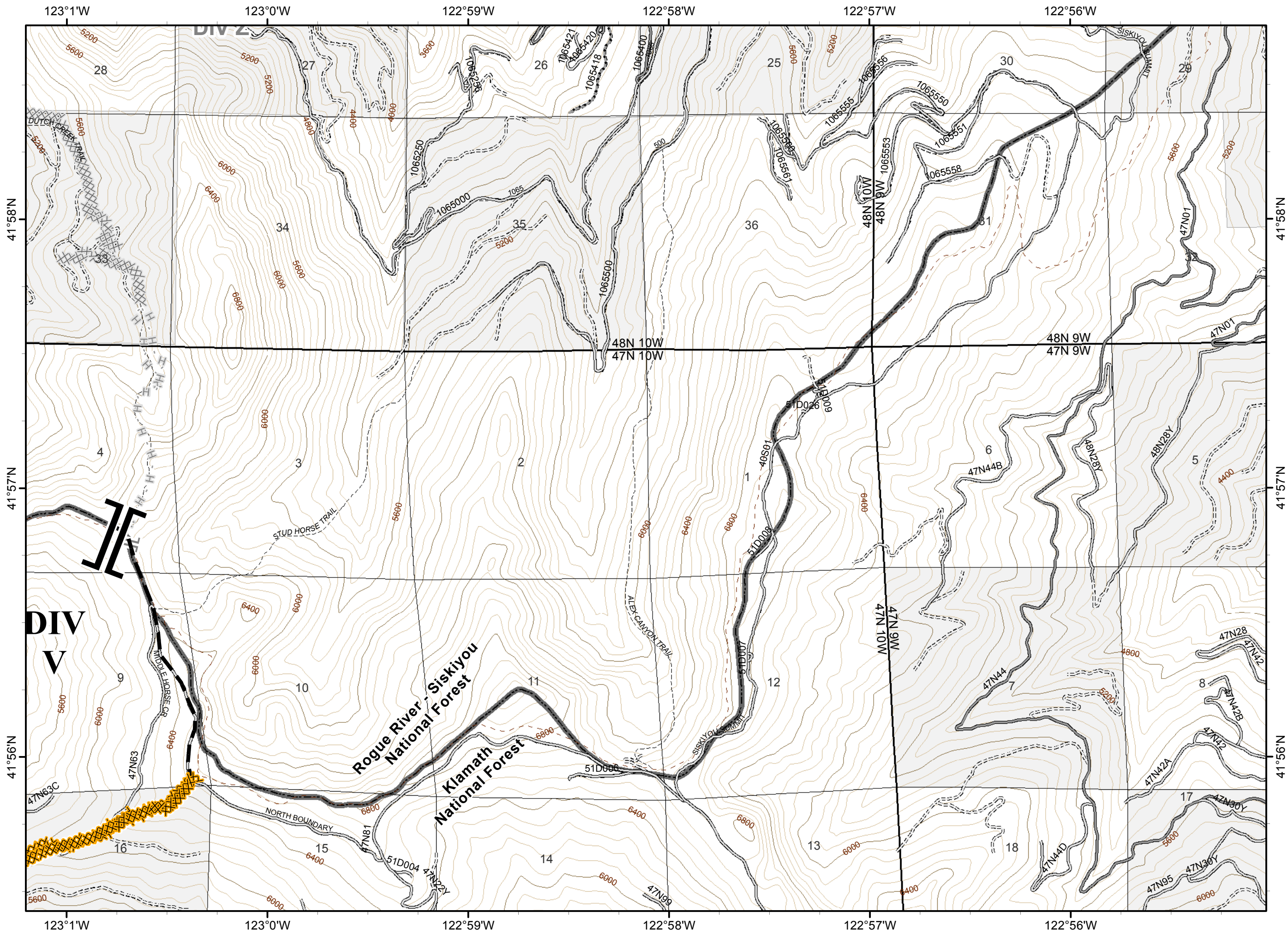
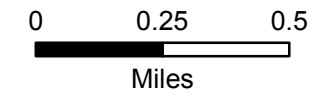
**Page 25**

- ( ) Division
- || Branch
- XXXXX Completed Dozer Line
- Planned Fire Line
- Ownership Private
- Structure
- Miller Complex**
- || Branch Break
- Miller Complex**
- XXXXX Completed Dozer Line
- H - H Completed Hand Line

**Needs Repair**  
 XXXX Dozerline



80 FT CONTOURS  
 NAD 1983. UTM ZONE 10 N





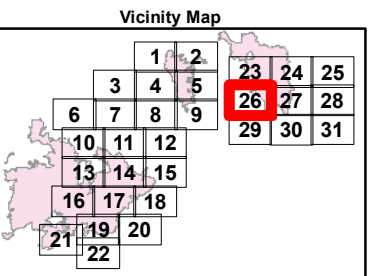
**ECLIPSE COMPLEX**  
**CA-KNF-006098**  
**SEPTEMBER 11, 2017**  
**IAP MAP**  
**BRANCH IV**

Oak Fire – 87,101 Acres  
 Cedar Fire - 9,050 Acres  
 As of 9/7/17 1400 PDT

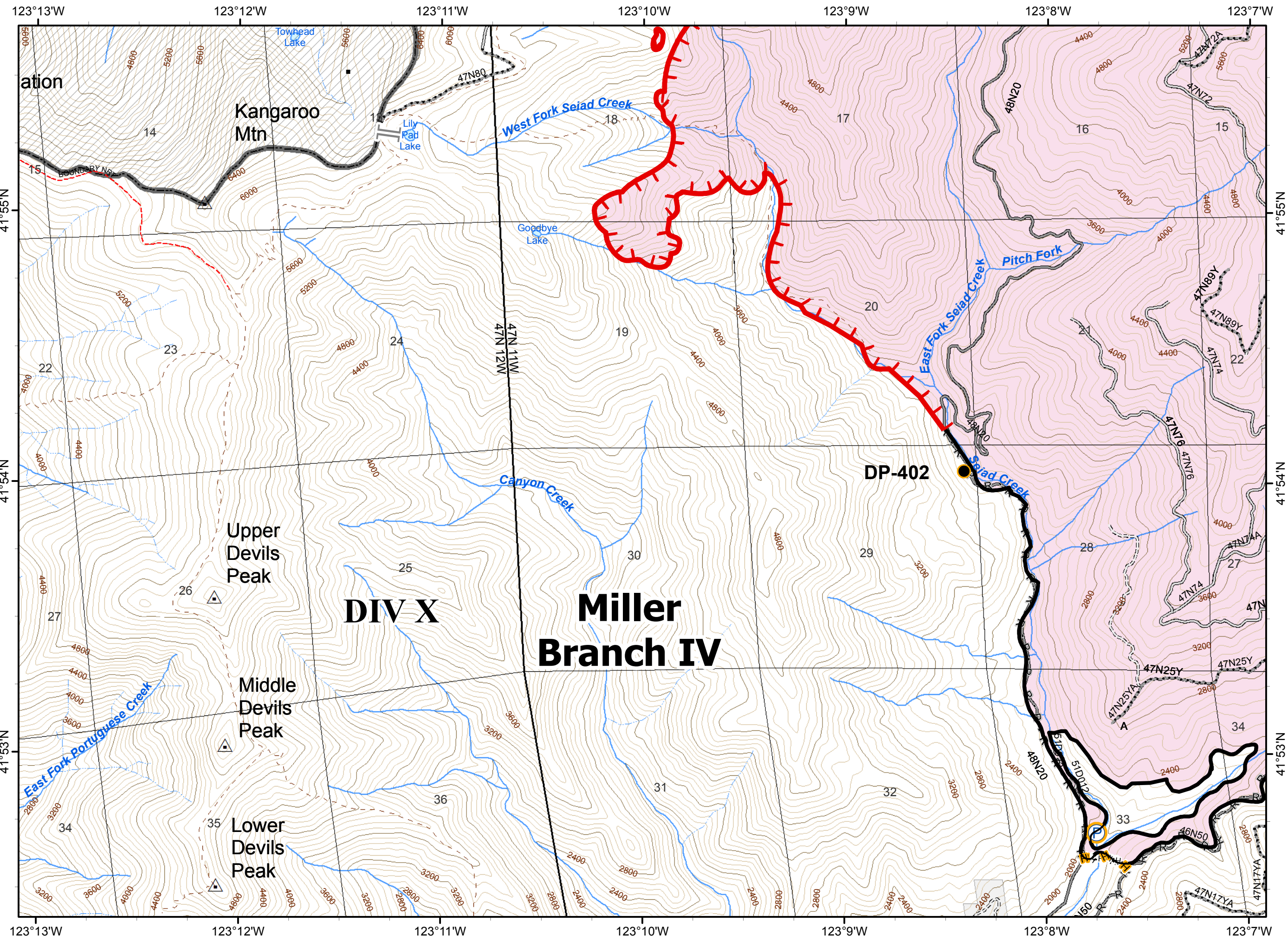
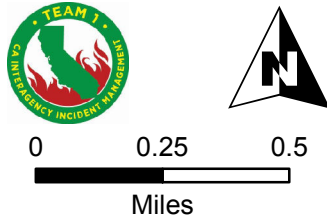
**Page 26**

- ( ) Division
- || Branch
- Uncontrolled Fire Edge
- H HH Hand Line
- Completed Line
- R - R Road as Completed Line
- Fire Polygon
- Ownership Private
- Wilderness
- Structure
- Miller Complex**
- || Branch Break

- Needs Repair**
- Drop Point
- Pump
- Needs Repair**
- Handline



80 FT CONTOURS  
 NAD 1983. UTM ZONE 10 N





- Division
- Branch
- Uncontrolled Fire Edge
- Completed Dozer Line
- HH Hand Line
- Completed Line
- Road as Completed Line
- Planned Fire Line
- Other
- Water Source
- Fire Polygon
- Ownership Private
- Structure

**Needs Repair**

Drop Point

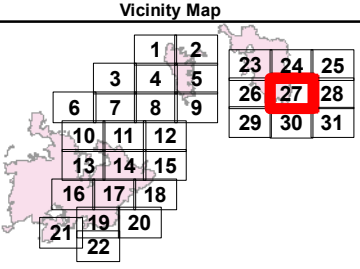
Pump

**Needs Repair**

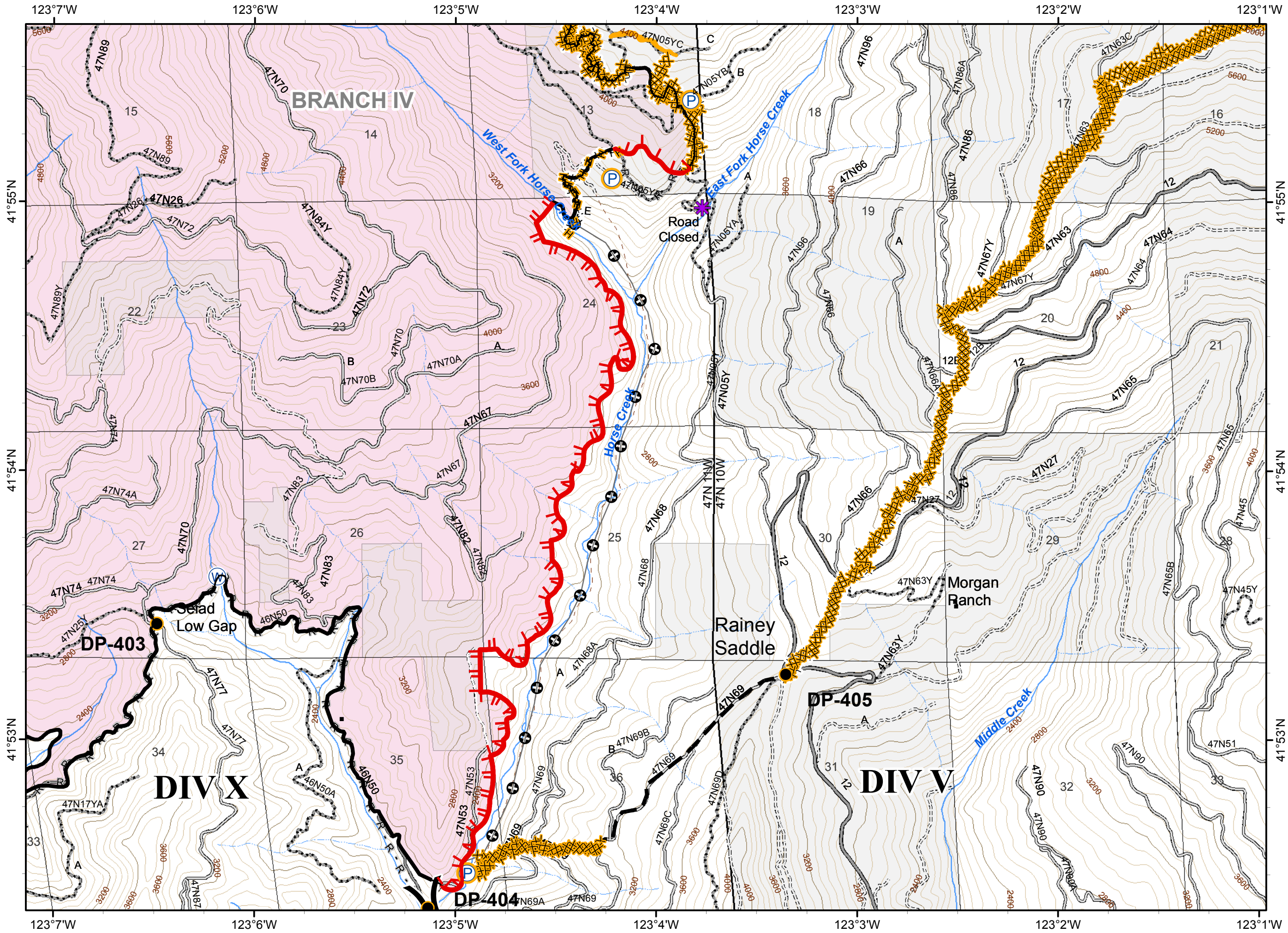
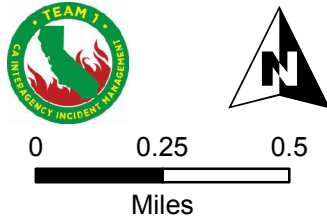
Dozerline

Handline

Road Repair



80 FT CONTOURS  
 NAD 1983. UTM ZONE 10 N





**ECLIPSE COMPLEX**  
**CA-KNF-006098**  
**SEPTEMBER 11, 2017**  
**IAP MAP**  
**BRANCH IV**

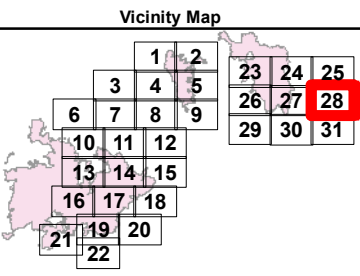
Oak Fire – 87,101 Acres  
 Cedar Fire - 9,050 Acres  
 As of 9/7/17 1400 PDT

**Page 28**

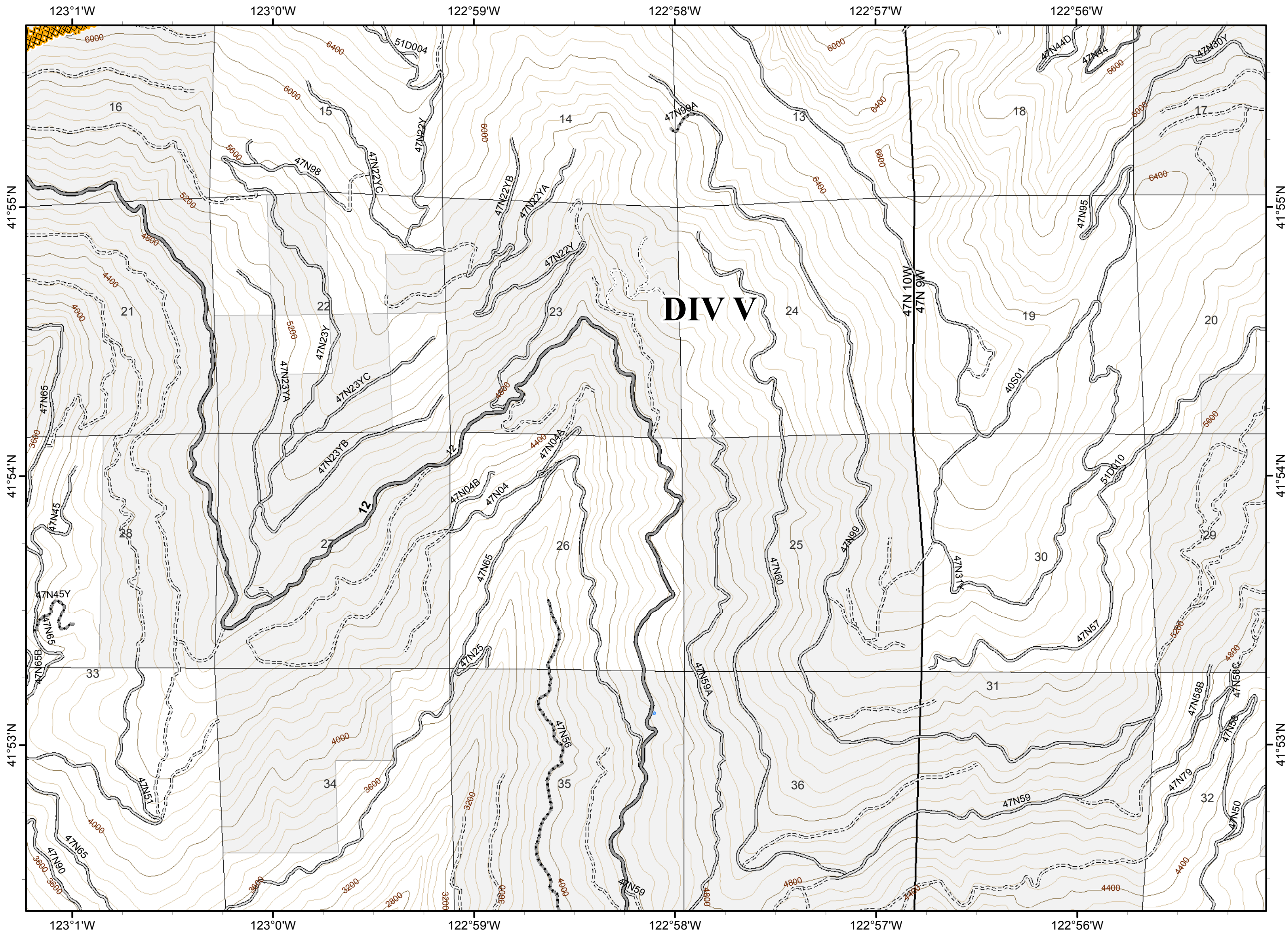
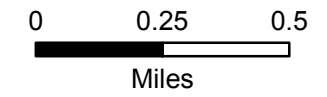
- ( ) Division
- || Branch
- XXXXX Completed Dozer Line
- Ownership Private
- Structure

**Needs Repair**

- XXXXX Dozerline



80 FT CONTOURS  
 NAD 1983. UTM ZONE 10 N





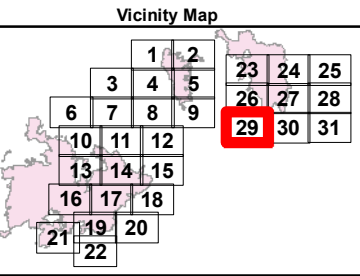
- ( ) Division
- || Branch
- XXXXX Completed Dozer Line
- H HH Hand Line
- R - R Road as Completed Line
- Ownership Private
- Structure

**Needs Repair**

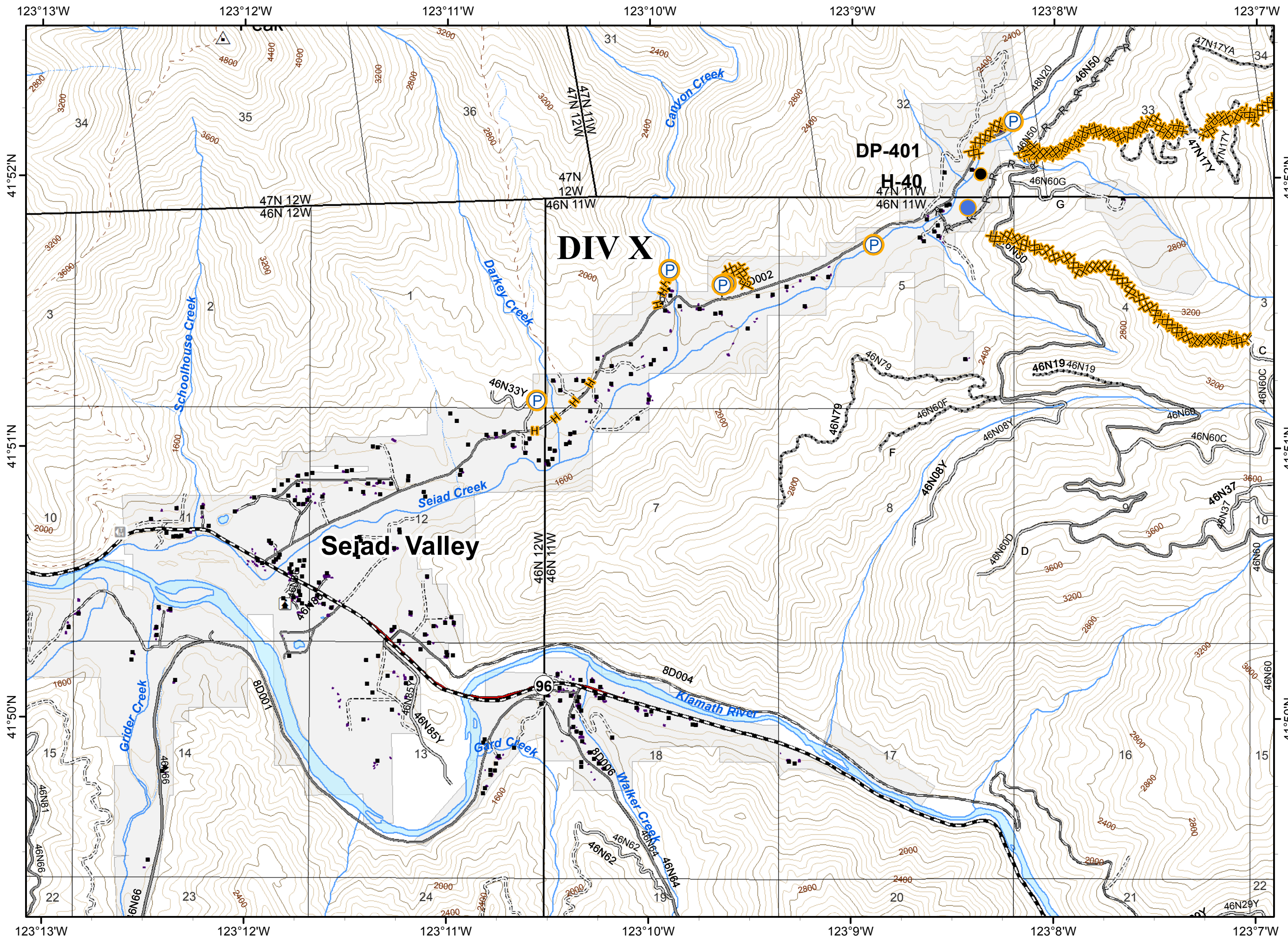
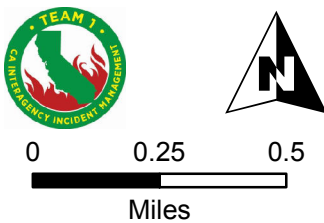
- Drop Point
- Helispot
- P Pump

**Needs Repair**

- XXXXX Dozerline
- H - Handline



80 FT CONTOURS  
 NAD 1983. UTM ZONE 10 N





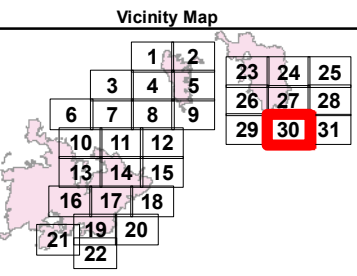
**ECLIPSE COMPLEX**  
**CA-KNF-006098**  
**SEPTEMBER 11, 2017**  
**IAP MAP**  
**BRANCH IV**

Oak Fire – 87,101 Acres  
 Cedar Fire - 9,050 Acres  
 As of 9/7/17 1400 PDT

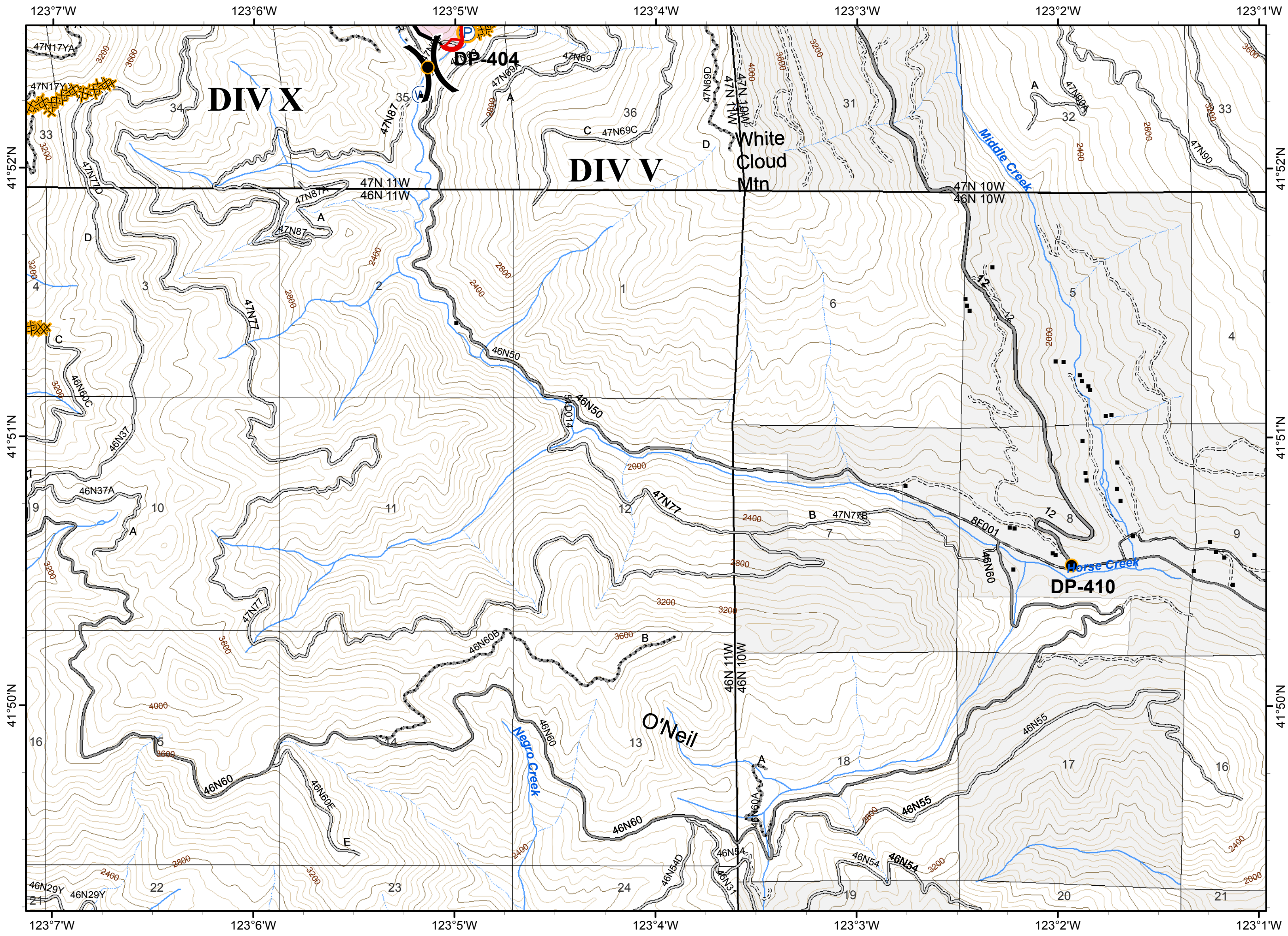
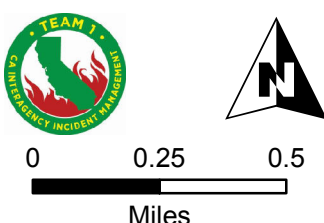
**Page 30**

- ( ) Division
- || Branch
- Uncontrolled Fire Edge
- XXXXX Completed Dozer Line
- Completed Line
- R - R Road as Completed Line
- ⊕ Other
- (W) Water Source
- Fire Polygon
- Ownership Private
- Structure

- Needs Repair**
- Drop Point
  - (P) Pump
- Needs Repair**
- XXXXX Dozerline

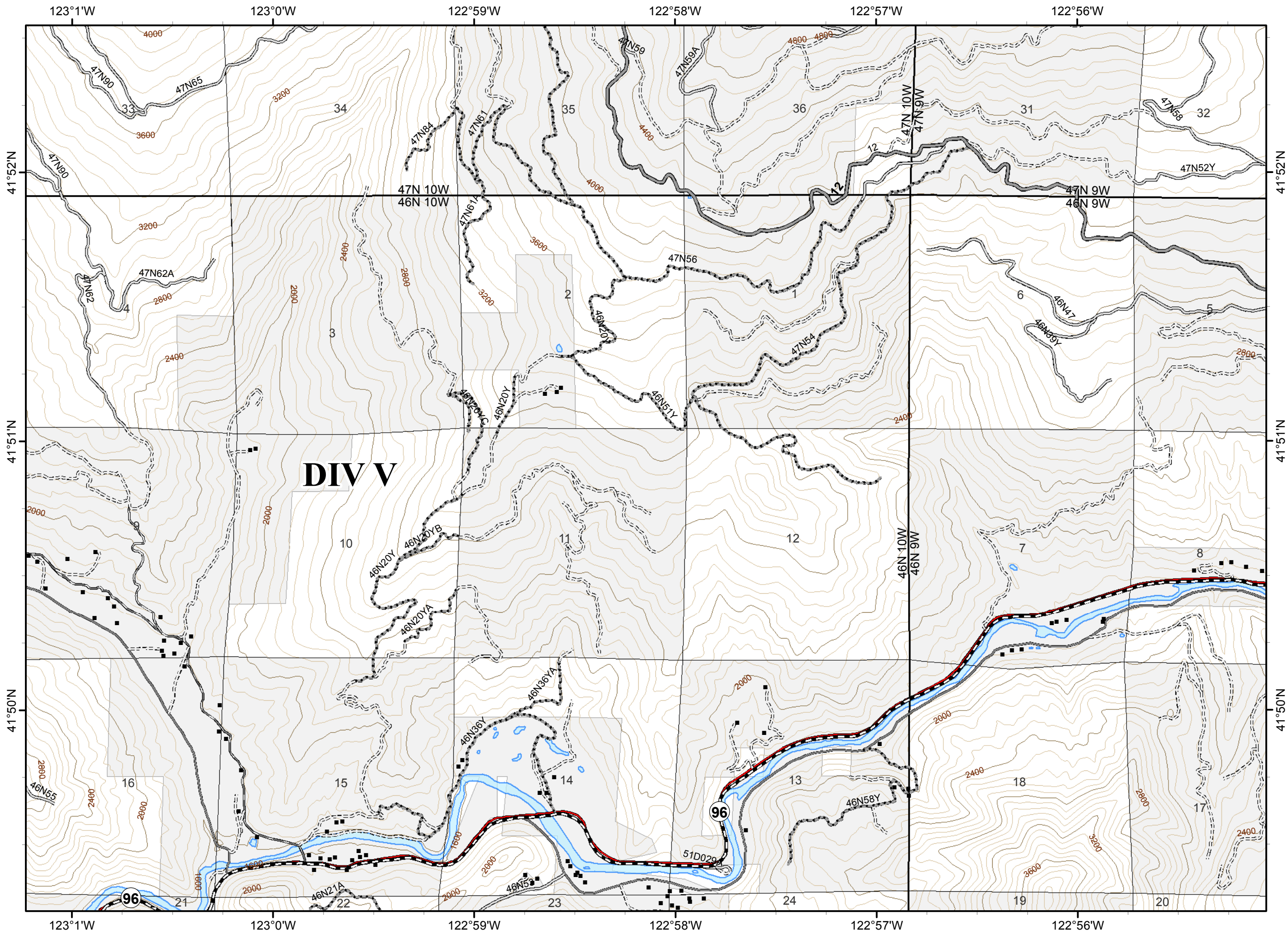


80 FT CONTOURS  
 NAD 1983. UTM ZONE 10 N

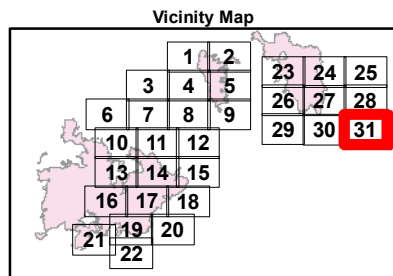




- ( ) Division
- || Branch
- Ownership Private
- Structure



**DIV V**



80 FT CONTOURS  
 NAD 1983. UTM ZONE 10 N

