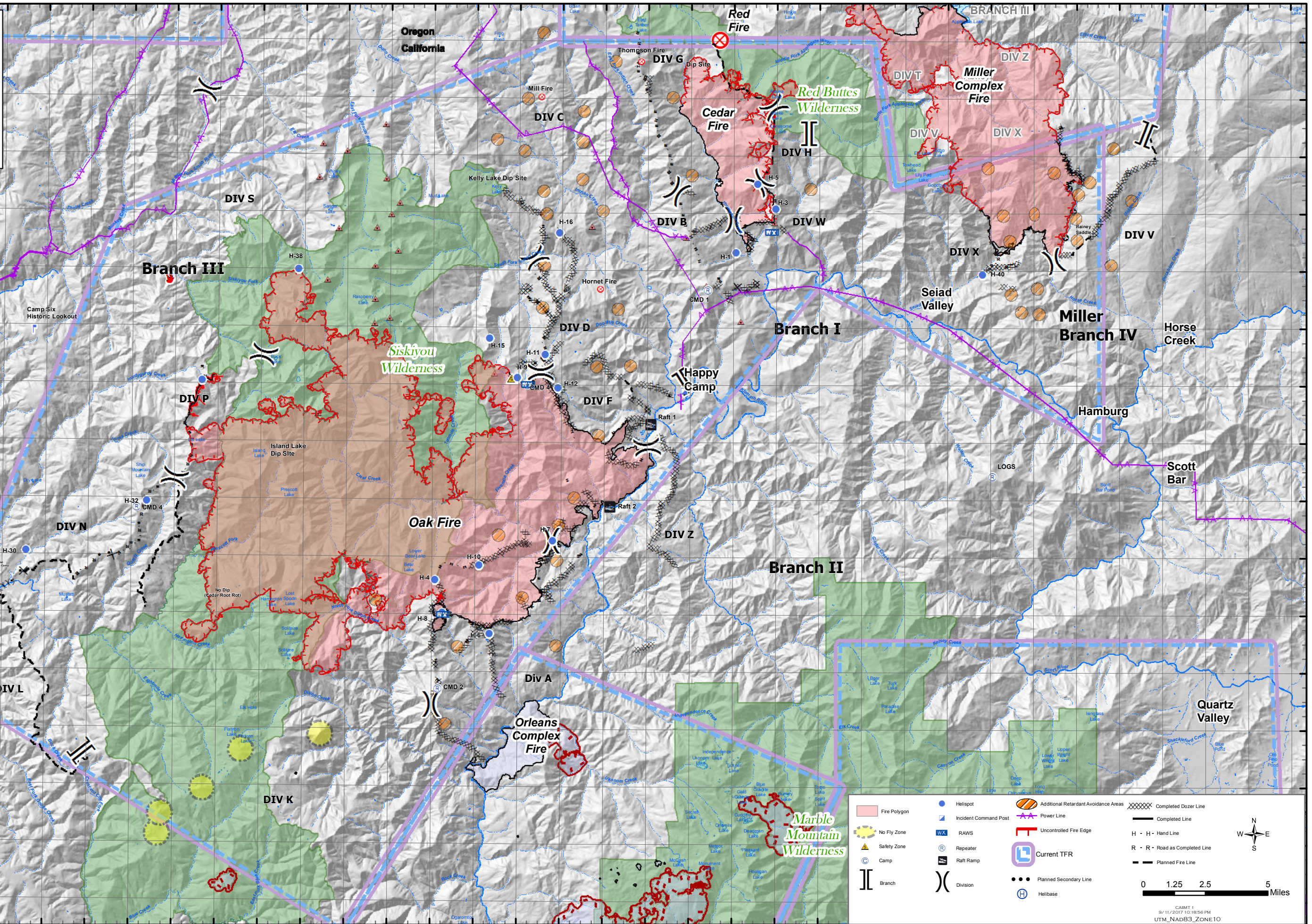


ECLIPSE COMPLEX
 CA-KNF-006098
AIR OPS
MAP
 SEPTEMBER 12, 2017





Fire Polygon	Helispot	Additional Retardant Avoidance Areas	Completed Dozer Line
No Fly Zone	RAWs	Uncontrolled Fire Edge	Completed Line
Safety Zone	Repeater	Current TFR	H - H - Hand Line
Camp	Raft Ramp	Planned Secondary Line	R - R - Road as Completed Line
Branch	Division	Helibase	Planned Fire Line

0 1.25 2.5 5 Miles

CAMT 1
9/11/2017 10:18:56 PM
UTM_NAD83_ZONE10

PointName	Lat	Long	Column1	PointName2	Lat3	Long4
Big Flat	41° 42.127' N	123° 52.888' W		DP-403	41° 53.431' N	123° 6.484' W
Raft 1	41° 46.657' N	123° 23.847' W		DP-404	41° 52.375' N	123° 5.136' W
Raft 2	41° 43.788' N	123° 25.747' W		DP-405	41° 53.244' N	123° 3.356' W
Bald Mtn RAWS	41° 48.051' N	123° 29.620' W		DP-410	41° 50.523' N	123° 1.931' W
Bear Butte	41° 48.126' N	123° 44.770' W		DP-48	41° 46.223' N	123° 24.318' W
Bear Wallows (No Dip!)	41° 40.907' N	123° 43.095' W		DP-50	41° 45.710' N	123° 25.886' W
Camp Slx Historic Lookout	41° 49.831' N	123° 52.615' W		DP-55	41° 46.795' N	123° 24.977' W
CMD-1	41° 51.334' N	123° 21.216' W		DP-57	41° 47.557' N	123° 24.804' W
CMD-2	41° 37.405' N	123° 33.707' W		DP-6	41° 53.751' N	123° 18.489' W
CMD-3	41° 48.017' N	123° 29.605' W		DP-60	41° 46.499' N	123° 27.481' W
CMD-4	41° 43.687' N	123° 47.728' W		DP-62	41° 48.380' N	123° 25.521' W
Dip Site	41° 59.207' N	123° 20.857' W		DP-70	41° 48.459' N	123° 29.026' W
DP-1	41° 42.340' N	123° 30.853' W		DP-8	41° 52.882' N	123° 18.320' W
DP-10	41° 50.833' N	123° 20.069' W		DP-80	41° 48.228' N	123° 30.250' W
DP-100	41° 43.863' N	123° 23.382' W		DP-90	41° 49.710' N	123° 28.763' W
DP-11	41° 37.626' N	123° 31.046' W		Gasquet Camp	41° 50.777' N	123° 58.286' W
DP-110	41° 43.553' N	123° 21.949' W		H-1	41° 52.663' N	123° 19.927' W
DP-12	41° 53.814' N	123° 20.393' W		H-10	41° 41.718' N	123° 31.822' W
DP-120	41° 42.184' N	123° 22.785' W		H-11	41° 49.078' N	123° 28.779' W
DP-14	41° 53.482' N	123° 21.296' W		H-12	41° 47.929' N	123° 28.185' W
DP-15	41° 53.365' N	123° 21.878' W		H-15	41° 49.640' N	123° 31.382' W
DP-2	41° 51.855' N	123° 19.397' W		H-16	41° 53.330' N	123° 28.150' W
DP-20	41° 43.336' N	123° 26.342' W		H-3	41° 54.190' N	123° 18.078' W
DP-200	41° 34.882' N	123° 31.508' W		H-38	41° 52.000' N	123° 40.300' W
DP-22	41° 40.845' N	123° 28.955' W		H-4	41° 41.202' N	123° 33.860' W
DP-25	41° 55.002' N	123° 22.870' W		H-40	41° 51.888' N	123° 8.426' W
DP-26	41° 52.957' N	123° 25.762' W		H-5	41° 55.049' N	123° 18.918' W
DP-27	41° 52.787' N	123° 26.315' W		H-6	41° 39.337' N	123° 31.319' W
DP-28	41° 40.331' N	123° 33.451' W		H-7	41° 42.563' N	123° 28.417' W
DP-29	41° 54.787' N	123° 30.767' W		H-8	41° 40.056' N	123° 33.526' W
DP-3	41° 39.945' N	123° 29.347' W		H-9	41° 48.276' N	123° 30.084' W
DP-30	41° 44.339' N	123° 26.981' W		Harrington Dip	41° 40.378' N	123° 41.431' W
DP-300	41° 41.103' N	123° 50.632' W		Hornet Fire	41° 51.360' N	123° 26.230' W
DP-31	41° 55.975' N	123° 32.762' W		ICP	41° 47.834' N	123° 22.272' W
DP-310	41° 44.722' N	123° 45.978' W		Island Dip	41° 45.557' N	123° 41.787' W
DP-315	41° 45.805' N	123° 45.158' W		Kelly Lake Dip Site	41° 54.815' N	123° 31.047' W
DP-320	41° 46.557' N	123° 45.512' W		KNF91	41° 40.005' N	123° 33.517' W
DP-34	41° 37.928' N	123° 33.838' W		Logs	41° 44.854' N	123° 7.946' W
DP-350	41° 40.994' N	123° 55.001' W		Mill Fire	41° 58.070' N	123° 28.990' W
DP-360	41° 35.171' N	123° 50.216' W		Raspberry Dip	41° 50.998' N	123° 37.219' W
DP-38	41° 38.143' N	123° 31.179' W		Sanger Dip	41° 54.109' N	123° 38.958' W
DP-39	41° 39.285' N	123° 31.269' W		Ship Mtn	41° 43.903' N	123° 47.287' W
DP-4	41° 53.393' N	123° 19.575' W		Small Lake (Cable Hazard)	41° 52.334' N	123° 29.734' W
DP-40	41° 45.258' N	123° 27.089' W		Thompson Fire	41° 59.310' N	123° 24.350' W
DP-401	41° 52.012' N	123° 8.363' W		Ward Helibase	41° 50.867' N	123° 59.017' W
DP-402	41° 54.043' N	123° 8.412' W		Water Source	41° 49.392' N	123° 28.012' W