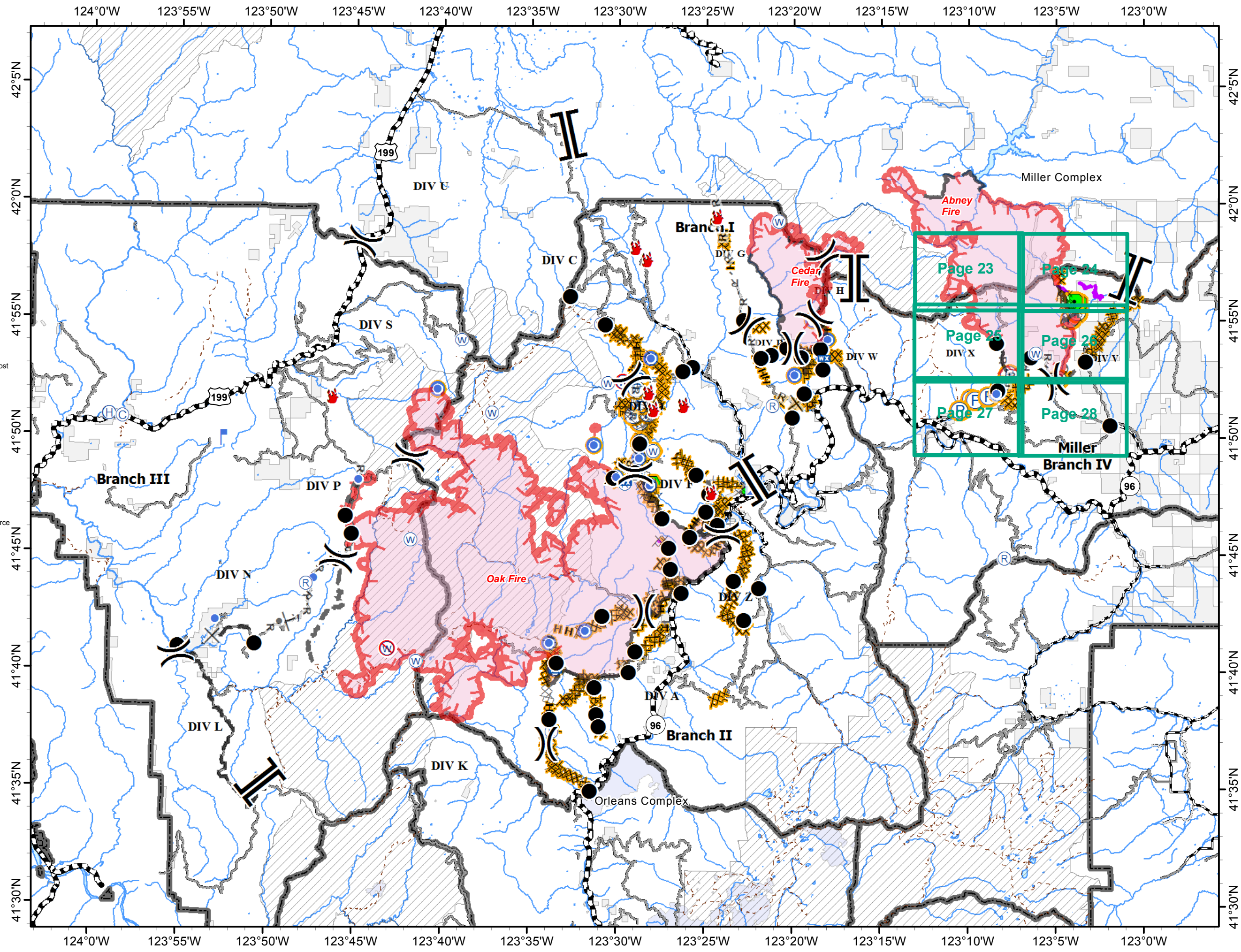


**ECLIPSE COMPLEX
CA-KNF-006098
SEPTEMBER 13, 2017**

**IAP MAP
BRANCH IV**

Oak Fire – 87,399 Acres
Cedar Fire - 9,079 Acres
As of 9/12/17 0045 PDT

- | | | | |
|--|------------------------------|--|-------------------------|
| | Division | | Camp |
| | Branch | | Drop Point |
| | Ranger District Boundary | | Fire Location |
| | Wilderness | | Fire Origin |
| | Ownership Private | | Helibase |
| | Dam | | Helispot |
| | Drop Point | | Hot Spot |
| | Pump | | Incident Command Post |
| | Helispot | | Lookout |
| | Turnaround | | Mobile Weather Unit |
| | Dozerline | | Repeater |
| | Handline | | Retardant/Mud Pit |
| | Road Repair | | Safety Zone |
| | Uncontrolled Fire Edge | | Spot Fire |
| | Completed Dozer Line | | Water Source |
| | Completed Line | | Restricted Water Source |
| | H - H Hand Line | | |
| | R - R Road as Completed Line | | |
| | Planned Fire Line | | |
| | Proposed Dozer Line | | |
| | Preped Trail Line | | |
| | Containment Line | | |



NAD 1983, UTM ZONE 10 N



Miles

9/12/2017 9:47:19 PM