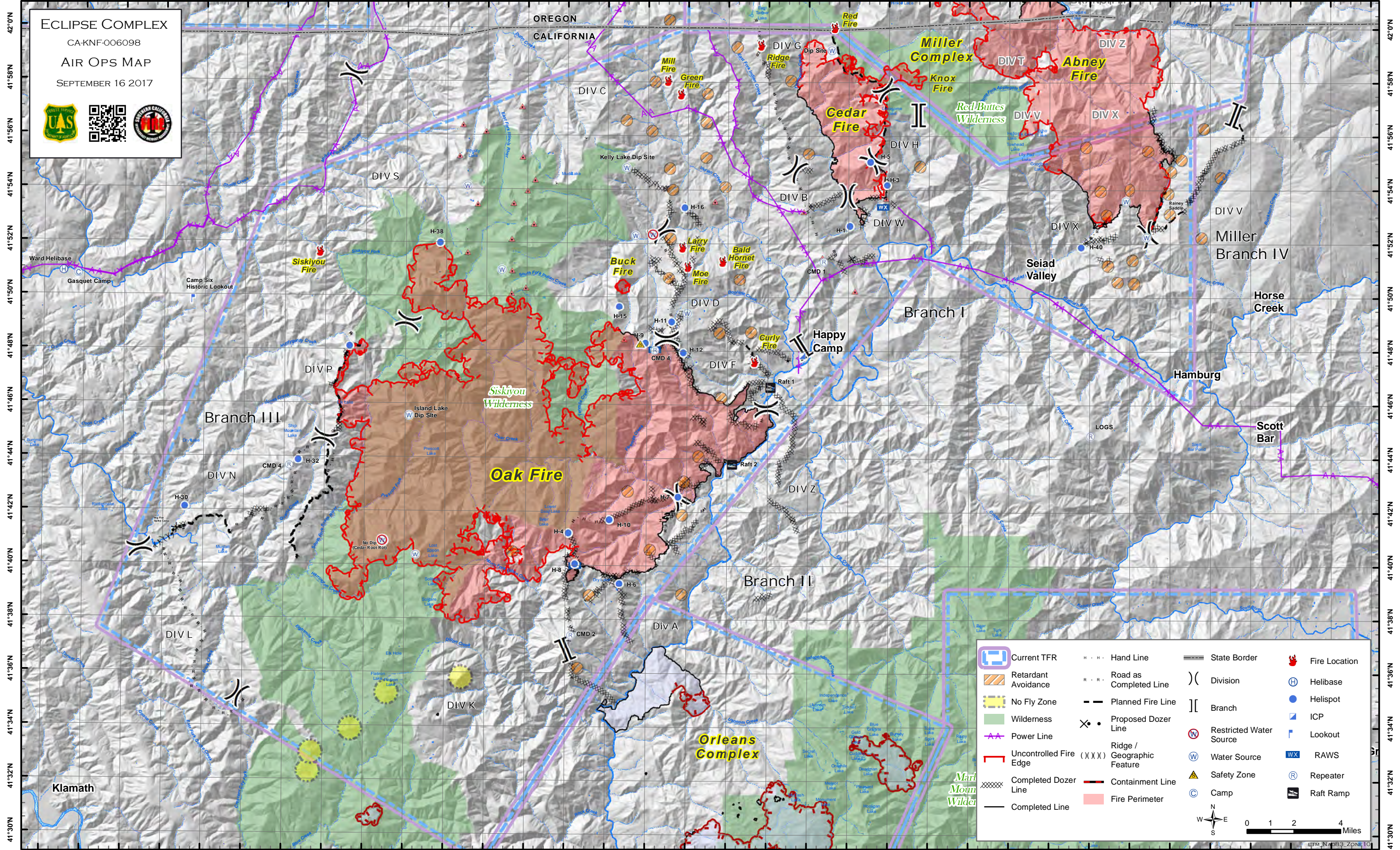


124°0'W 123°58'W 123°56'W 123°54'W 123°52'W 123°50'W 123°48'W 123°46'W 123°44'W 123°42'W 123°40'W 123°38'W 123°36'W 123°34'W 123°32'W 123°30'W 123°28'W 123°26'W 123°24'W 123°22'W 123°20'W 123°18'W 123°16'W 123°14'W 123°12'W 123°10'W 123°8'W 123°6'W 123°4'W 123°2'W 123°0'W 122°58'W 122°56'W 122°54'W

ECLIPSE COMPLEX
 CA-KNF-006098
AIR OPS MAP
 SEPTEMBER 16 2017



	Current TFR		Hand Line		State Border		Fire Location
	Retardant Avoidance		Road as Completed Line		Division		Helibase
	No Fly Zone		Planned Fire Line		Branch		Helispot
	Wilderness		Proposed Dozer Line		Restricted Water Source		Lookout
	Power Line		Ridge / Geographic Feature		Water Source		RAWS
	Uncontrolled Fire Edge		Containment Line		Camp		Repeater
	Completed Dozer Line		Fire Perimeter		Safety Zone		Raft Ramp
	Completed Line				North Arrow		

0 1 2 4 Miles

UTM, NAD83, ZONE 10

124°0'W 123°58'W 123°56'W 123°54'W 123°52'W 123°50'W 123°48'W 123°46'W 123°44'W 123°42'W 123°40'W 123°38'W 123°36'W 123°34'W 123°32'W 123°30'W 123°28'W 123°26'W 123°24'W 123°22'W 123°20'W 123°18'W 123°16'W 123°14'W 123°12'W 123°10'W 123°8'W 123°6'W 123°4'W 123°2'W 123°0'W 122°58'W 122°56'W 122°54'W

Point Name	Lat	Long
Bald Hornet Fire	41° 51.360' N	123° 26.230' W
Bald Mtn RAWs	41° 48.051' N	123° 29.620' W
Bear Wallows (No Dip!)	41° 40.907' N	123° 43.095' W
Branch III Fire Start	41° 51.665' N	123° 46.252' W
Camp Six Historic Lookout	41° 49.831' N	123° 52.615' W
CMD-1	41° 51.334' N	123° 21.216' W
CMD-2	41° 37.405' N	123° 33.707' W
CMD-3	41° 48.017' N	123° 29.605' W
CMD-4	41° 43.687' N	123° 47.728' W
Curly Fire	41° 47.631' N	123° 24.631' W
Dip Site	41° 59.207' N	123° 20.857' W
DP-10	41° 50.833' N	123° 20.069' W
DP-100	41° 43.863' N	123° 23.382' W
DP-11	41° 37.626' N	123° 31.046' W
DP-110	41° 43.553' N	123° 21.949' W
DP-12	41° 53.814' N	123° 20.393' W
DP-120	41° 42.184' N	123° 22.785' W
DP-14	41° 53.482' N	123° 21.296' W
DP-15	41° 53.365' N	123° 21.878' W
DP-2	41° 51.855' N	123° 19.397' W
DP-20	41° 43.336' N	123° 26.342' W
DP-200	41° 34.882' N	123° 31.508' W
DP-22	41° 40.845' N	123° 28.955' W
DP-25	41° 55.002' N	123° 22.870' W
DP-26	41° 52.957' N	123° 25.762' W
DP-27	41° 52.787' N	123° 26.315' W
DP-28	41° 40.331' N	123° 33.451' W
DP-29	41° 54.787' N	123° 30.767' W
DP-3	41° 39.945' N	123° 29.347' W
DP-30	41° 44.339' N	123° 26.981' W
DP-300	41° 41.103' N	123° 50.632' W
DP-31	41° 55.975' N	123° 32.762' W
DP-310	41° 44.722' N	123° 45.978' W

Point Name	Lat	Long
DP-315	41° 45.805' N	123° 45.158' W
DP-320	41° 46.557' N	123° 45.512' W
DP-34	41° 37.928' N	123° 33.838' W
DP-350	41° 40.994' N	123° 55.001' W
DP-360	41° 35.171' N	123° 50.216' W
DP-38	41° 38.143' N	123° 31.179' W
DP-39	41° 39.285' N	123° 31.269' W
DP-4	41° 53.393' N	123° 19.575' W
DP-40	41° 45.258' N	123° 27.089' W
DP-401	41° 52.012' N	123° 8.363' W
DP-402	41° 54.043' N	123° 8.412' W
DP-403	41° 53.431' N	123° 6.484' W
DP-404	41° 52.375' N	123° 5.136' W
DP-405	41° 53.244' N	123° 3.356' W
DP-410	41° 50.523' N	123° 1.931' W
DP-48	41° 46.223' N	123° 24.318' W
DP-50	41° 45.710' N	123° 25.886' W
DP-55	41° 46.795' N	123° 24.977' W
DP-57	41° 47.557' N	123° 24.804' W
DP-6	41° 53.751' N	123° 18.489' W
DP-60	41° 46.499' N	123° 27.481' W
DP-62	41° 48.380' N	123° 25.521' W
DP-70	41° 48.459' N	123° 29.026' W
DP-8	41° 52.882' N	123° 18.320' W
DP-80	41° 48.228' N	123° 30.250' W
DP-90	41° 49.710' N	123° 28.763' W
Gasquet Camp	41° 50.777' N	123° 58.286' W
Green Fire	41° 57.573' N	123° 28.327' W
H-1	41° 52.663' N	123° 19.927' W
H-10	41° 41.718' N	123° 31.822' W
H-11	41° 49.078' N	123° 28.779' W
H-12	41° 47.929' N	123° 28.185' W
H-15	41° 49.640' N	123° 31.382' W

Point Name	Lat	Long
H-16	41° 53.330' N	123° 28.150' W
H-3	41° 54.190' N	123° 18.078' W
H-30	41° 42.127' N	123° 52.888' W
H-32	41° 43.903' N	123° 47.287' W
H-35	41° 48.126' N	123° 44.770' W
H-38	41° 52.000' N	123° 40.300' W
H-4	41° 41.202' N	123° 33.860' W
H-40	41° 51.888' N	123° 8.426' W
H-5	41° 55.049' N	123° 18.918' W
H-6	41° 39.337' N	123° 31.319' W
H-7	41° 42.563' N	123° 28.417' W
H-8	41° 40.056' N	123° 33.526' W
H-9	41° 48.276' N	123° 30.084' W
Harrington Dip	41° 40.378' N	123° 41.431' W
ICP	41° 47.834' N	123° 22.272' W
Island Dip	41° 45.557' N	123° 41.787' W
Kelly Lake Dip Site	41° 54.815' N	123° 31.047' W
KNF91	41° 40.005' N	123° 33.517' W
Larry Fire	41° 51.877' N	123° 28.232' W
Logs	41° 44.854' N	123° 7.946' W
Mill Fire	41° 58.070' N	123° 28.990' W
Moe Fire	41° 51.167' N	123° 27.962' W
Raft 1	41° 46.657' N	123° 23.847' W
Raft 2	41° 43.788' N	123° 25.747' W
Raspberry Dip	41° 50.998' N	123° 37.219' W
Ridge Fire	41° 59.410' N	123° 24.350' W
Safety Zone	41° 48.248' N	123° 30.317' W
Sanger Dip	41° 54.109' N	123° 38.958' W
Small Lake (Cable Hazard)	41° 52.334' N	123° 29.734' W
Ward Helibase	41° 50.867' N	123° 59.017' W
Water Source	41° 49.392' N	123° 28.012' W