



ECLIPSE COMPLEX  
CA-KNF 006098

SEPTEMBER 16 2017  
OPERATIONS  
DAY SHIFT

# BRANCH I & IV

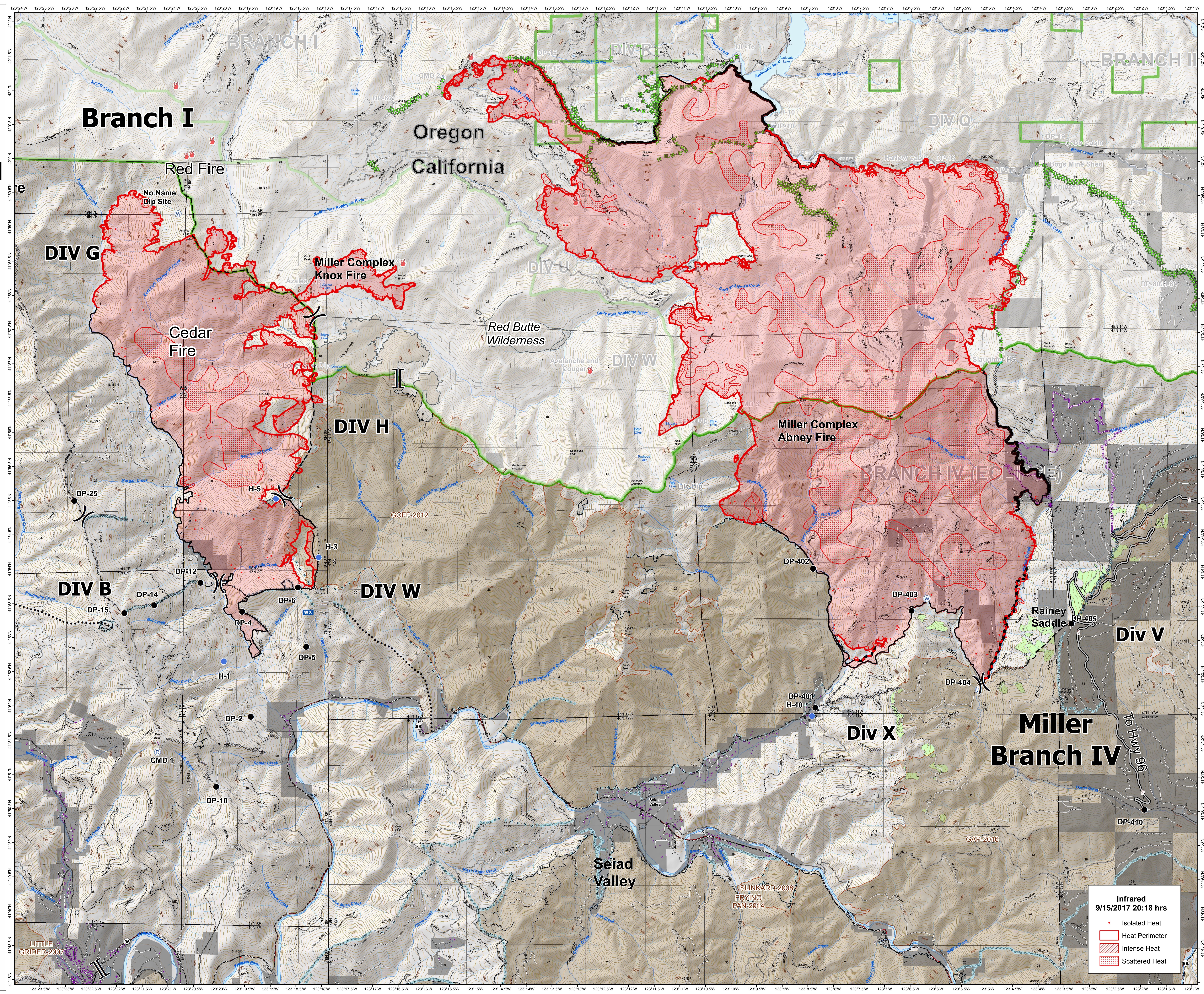
- ( ) Division
- || Branch
- Incident Command Post
- Camp
- Drop Point
- 🔥 Fire Location
- ⊕ Helibase
- ⊙ Helispot
- 🔍 Lookout
- WX Mobile Weather Unit
- Ⓡ Repeater
- ⚠ Safety Zone
- 🌊 Water Source
- 🚫 Restricted Water Source
- 🚢 Raft Landing
- Uncontrolled Fire Edge
- ⊘ Completed Dozer Line
- Completed Line
- Hand Line
- Road as Completed Line
- ◇ Aerial Retardant Drop
- Planned Fire Line
- ⋯ Planned Secondary Line
- ⊗ Proposed Dozer Line
- (XXX) Ridge / Geographic Feature
- Containment Line
- Miller Completed Line
- ⊘ Miller Completed Dozer Line
- Miller Completed Hand Line
- Miller Road as Completed Line
- ⊘ Past Ridge/Geographic Feature
- ⋯ Past Highlighted Man Made Feature
- Past Hand Line
- ⊘ Past Completed Dozer Line
- Past Completed Line
- 🌿 Wilderness
- 🏠 Structures
- 🏡 Old Fire Scar
- 📏 Contract Units
- 🔥 Heat Perimeter
- 🔥 Intense Heat
- 🔥 Scattered Heat
- 🔥 Isolated Heat

80 Foot Contours  
1:30,000

Scale: 0 0.5 1 Miles

QR Code

Map Date: 9/16/2017  
Map Scale: 1:30,000



**Infrared**  
9/15/2017 20:18 hrs

- 🔥 Isolated Heat
- 🔥 Heat Perimeter
- 🔥 Intense Heat
- 🔥 Scattered Heat