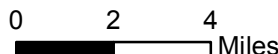
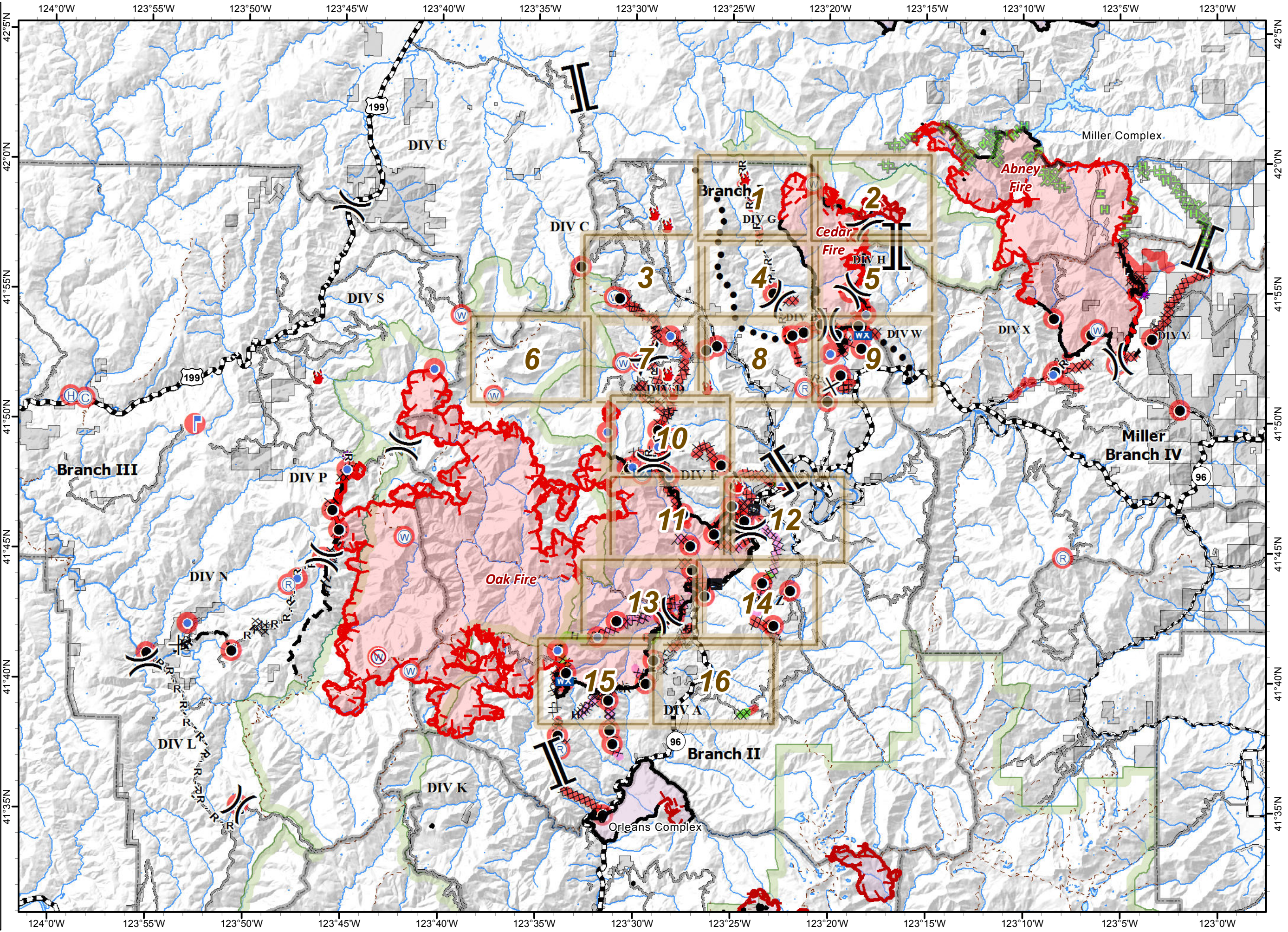


ECLIPSE COMPLEX  
 CA-KNF-006098  
 SEPTEMBER 17 2017

IAP MAP  
 BRANCH I & II

Index

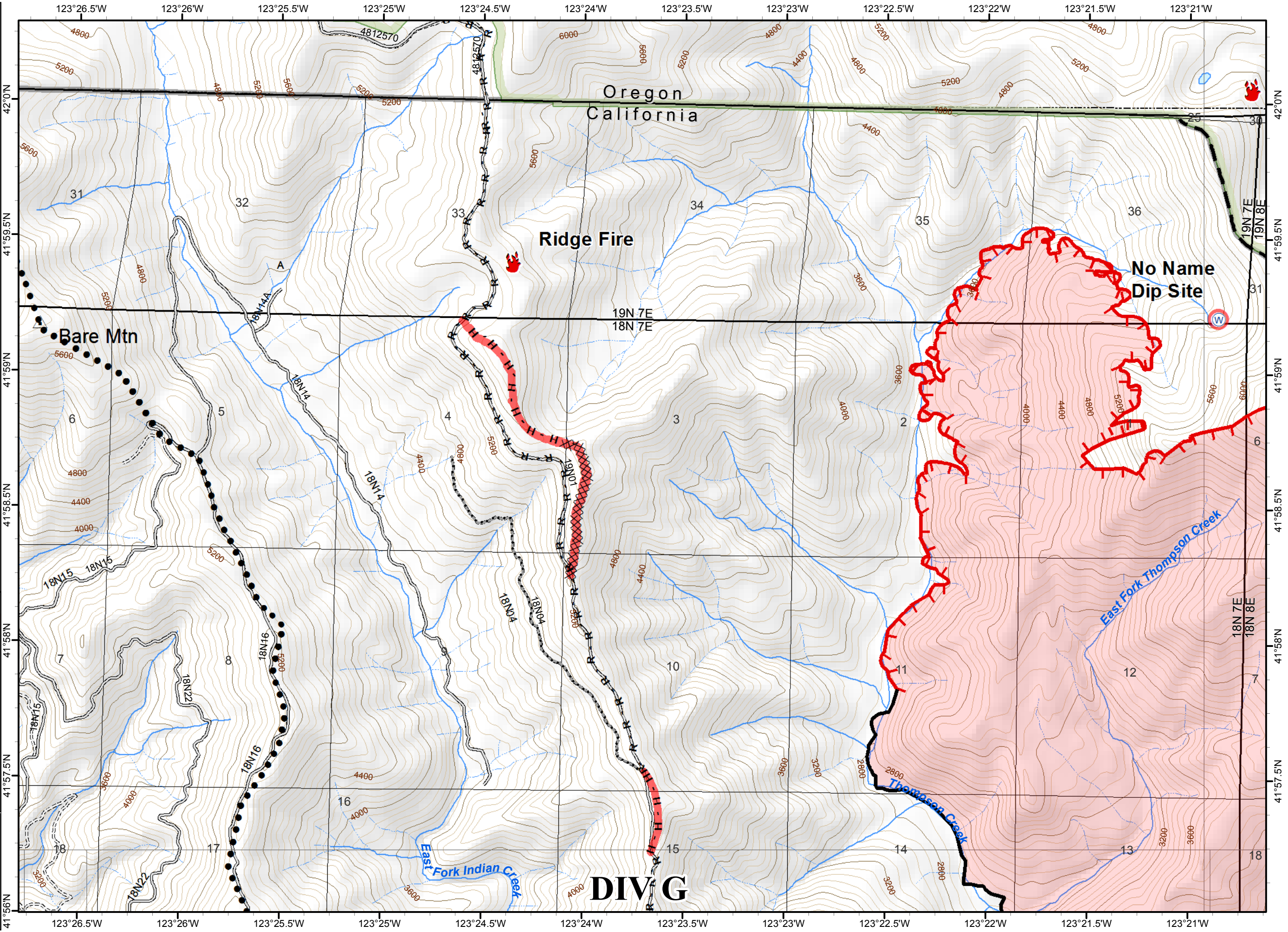
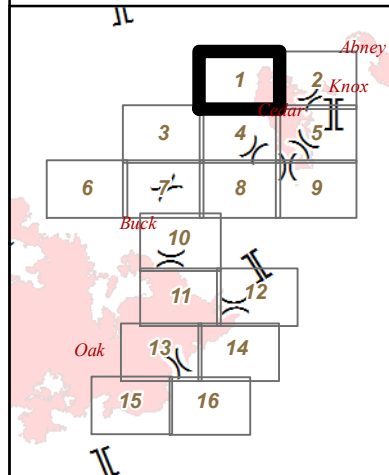
- Fire Perimeter
- Division
- Branch
- Uncontrolled Fire Edge
- Planned Line
- Secondary Line
- Completed Dozer Line
- Completed Line
- H - Hand Line
- R - Completed Line
- Planned Fire Line
- Proposed Dozer Line
- Containment Line
- Ownership Private
- Ranger District Boundary
- Wilderness
- IAP Tiles Branch I & II
- Boat Ramp
- Camp
- Drop Point
- Fire Location
- Helibase
- Helispot
- Incident Command Post
- Lookout
- Mobile Weather Unit
- Repeater
- Water Source
- Restricted Water Source
- Road Washout
- Repair Needed
- Completed - Inspected
- Ready to be Worked On
- Repair Needed



NAD 1983 UTM zone 10N

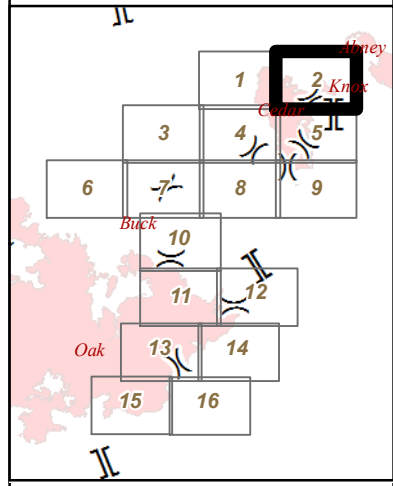


- ( ) Division
- [ ] Branch
- 🔥 Fire Location
- Ⓜ Water Source
- 🔴 Uncontrolled Fire Edge
- Planned Secondary Line
- ⊗ Completed Dozer Line
- Completed Line
- H - Hand Line
- R - Road as Completed Line
- ▬ Planned Fire Line
- 🔴 Fire Perimeter
- 🟩 Wilderness
- ▭ Ranger District Boundary
- 🔴 Repair Needed
- 🔴 Repair Needed

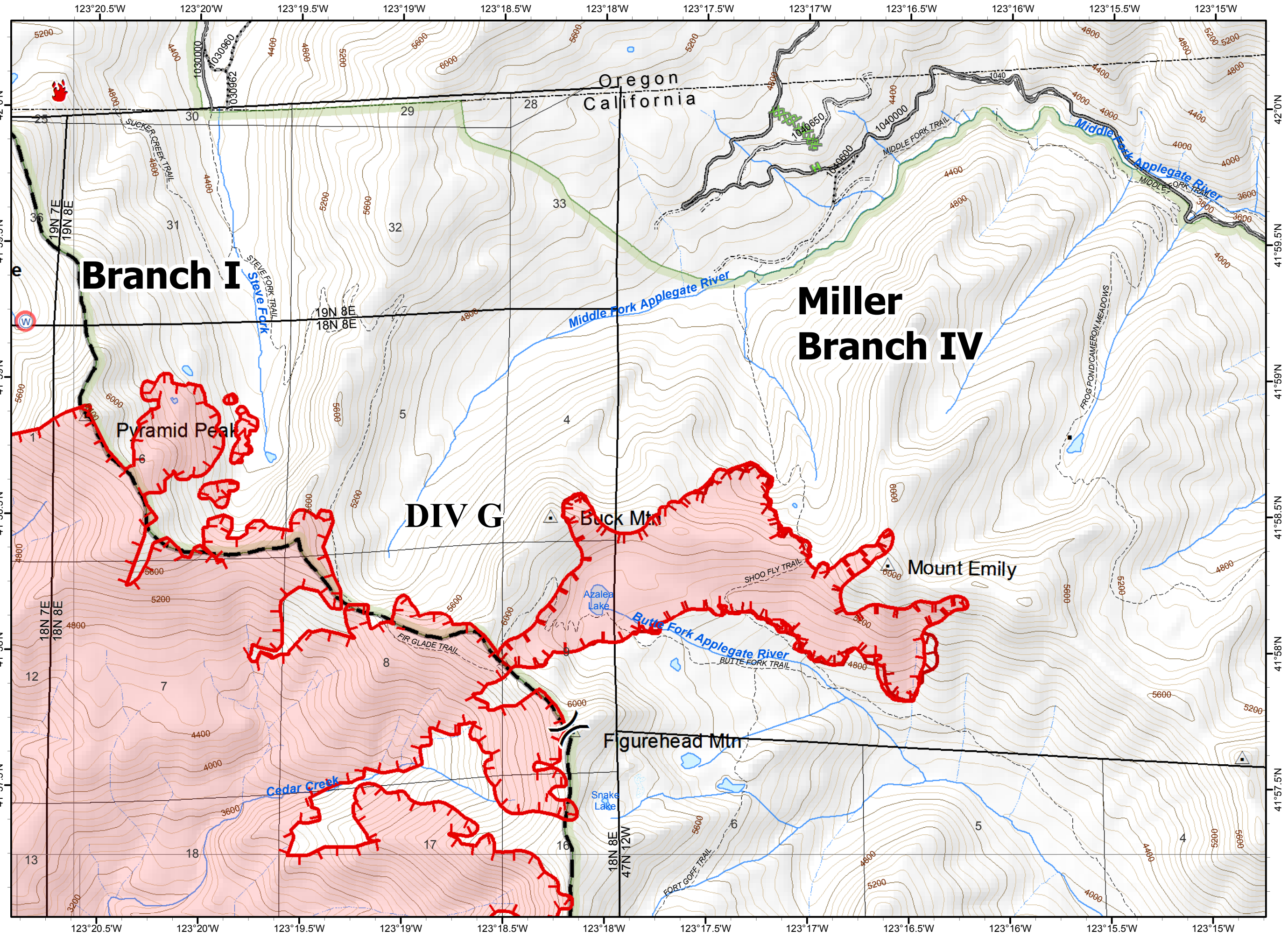









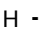





- Division
- Branch
- Miller Completed Dozer Line
- Miller Completed Hand Line
- Water Source
- Uncontrolled Fire Edge
- Planned Fire Line
- Fire Perimeter
- Uncontrolled Fire Edge
- Wilderness
- Ranger District Boundary
- Ownership Private
- Repair Needed

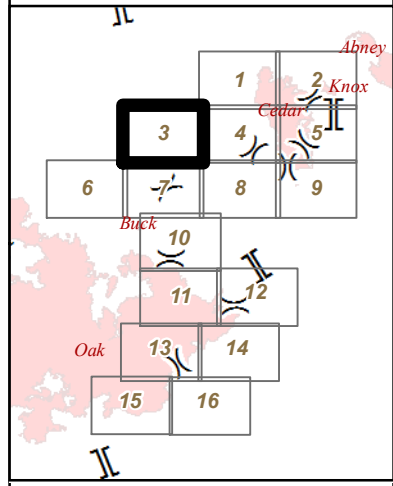


NAD 1983 UTM zone 10N

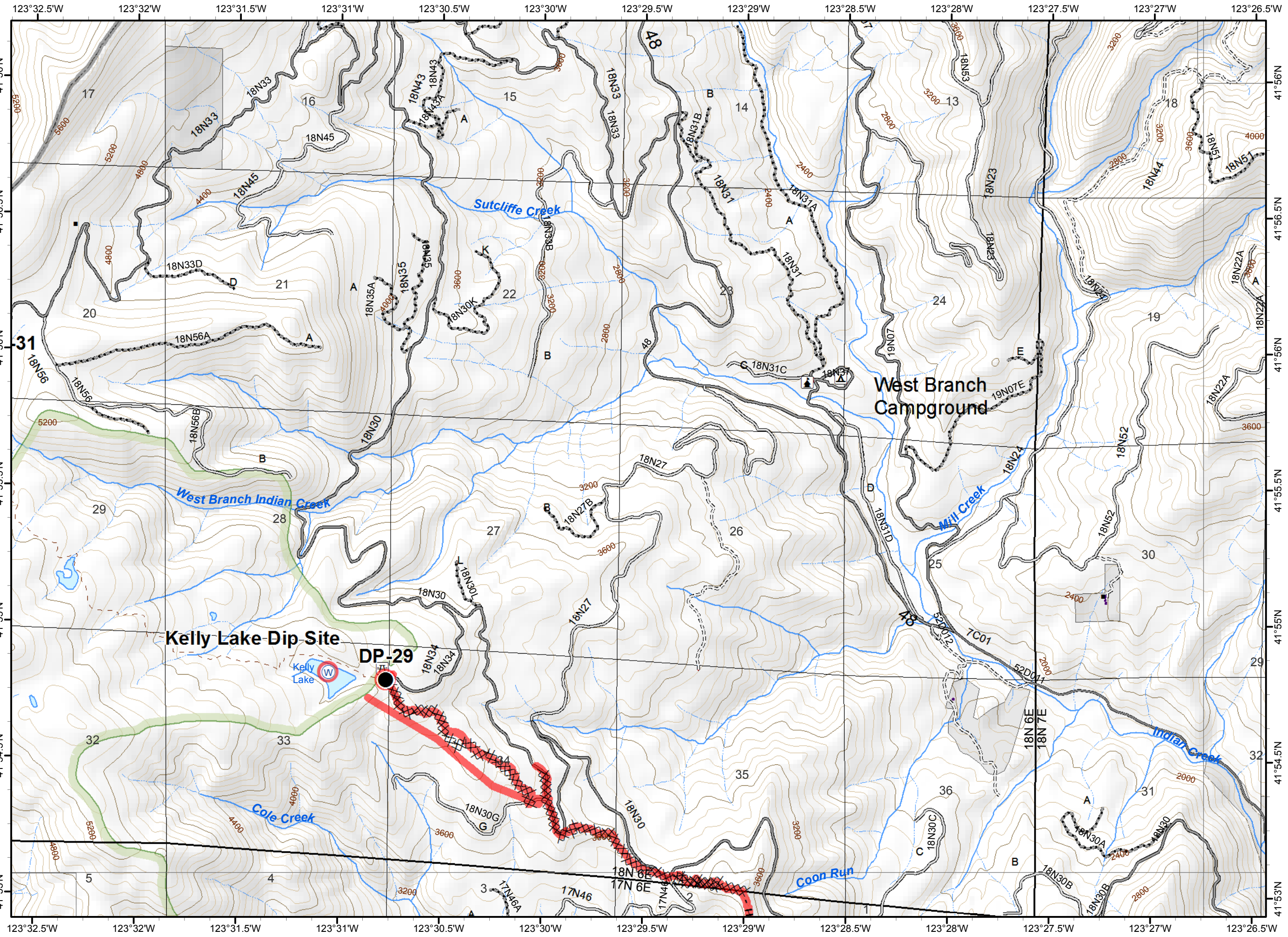










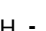

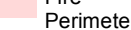
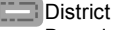


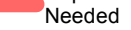
-  Division
-  Branch
-  Drop Point
-  Water Source
-  Completed Dozer Line
-  Hand Line
-  Wilderness
-  Ranger District Boundary
-  Ownership Private
-  Repair Needed
-  Repair Needed

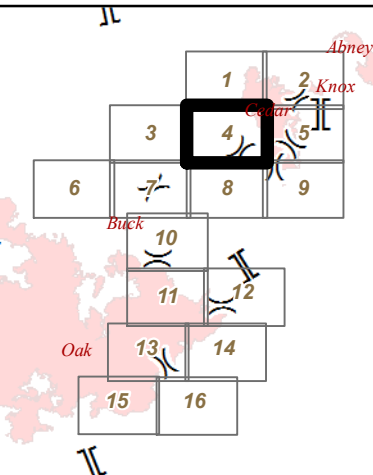


NAD 1983 UTM zone 10N

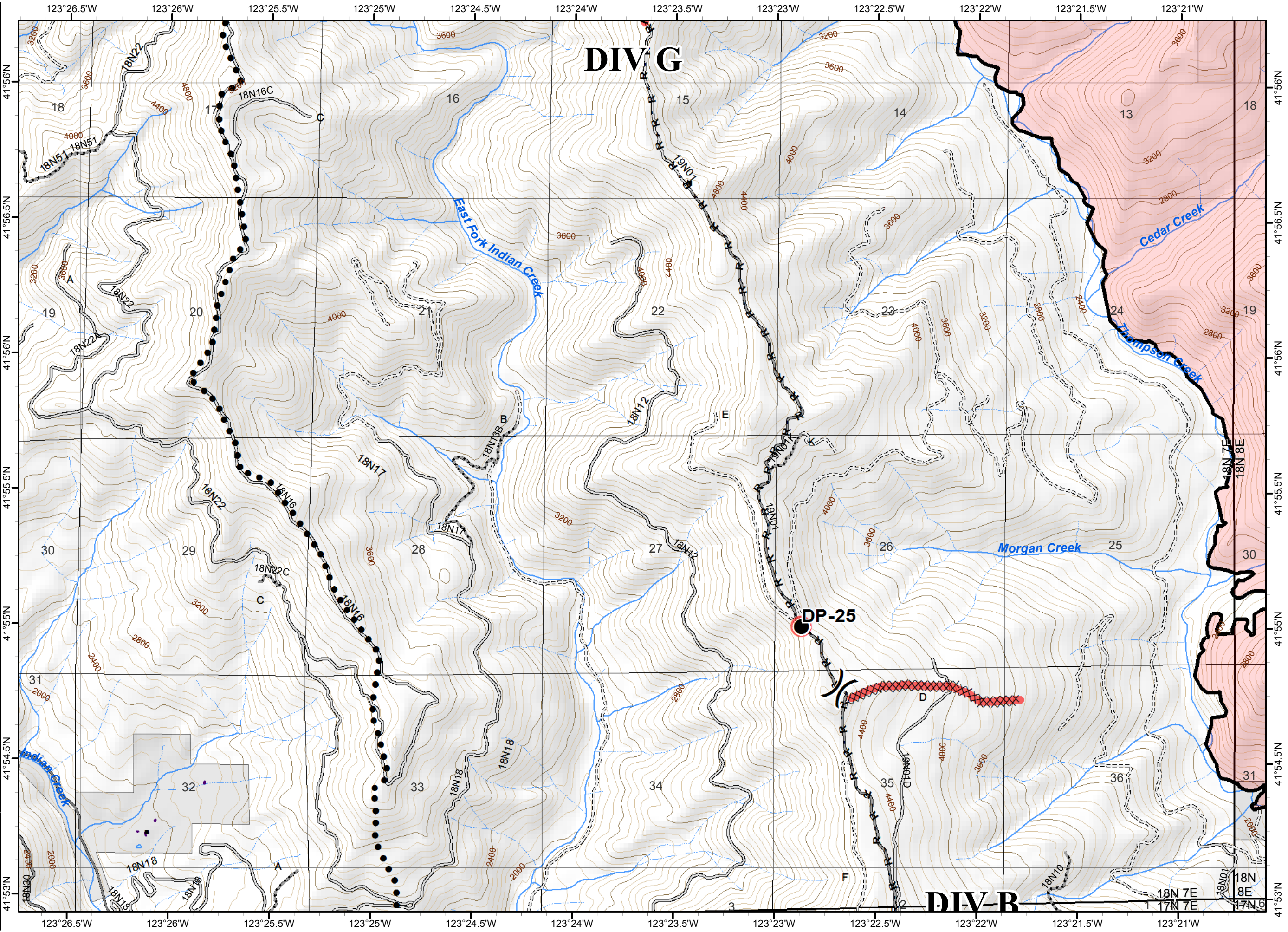




-  Division
-  Branch
-  Drop Point
-  Planned Secondary Line
-  Completed Dozer Line
-  Completed Line
-  H - Hand Line
-  R - Completed Line
-  Fire Perimeter
-  Ranger District Boundary
-  Ownership Private
-  Repair Needed
-  Repair Needed

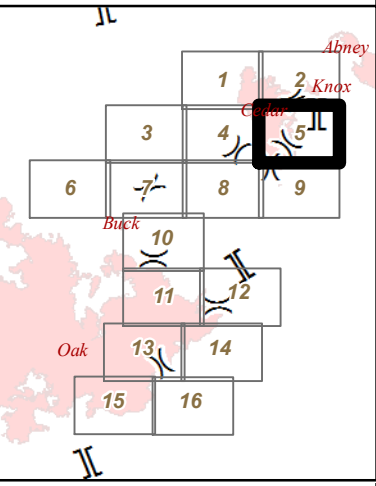
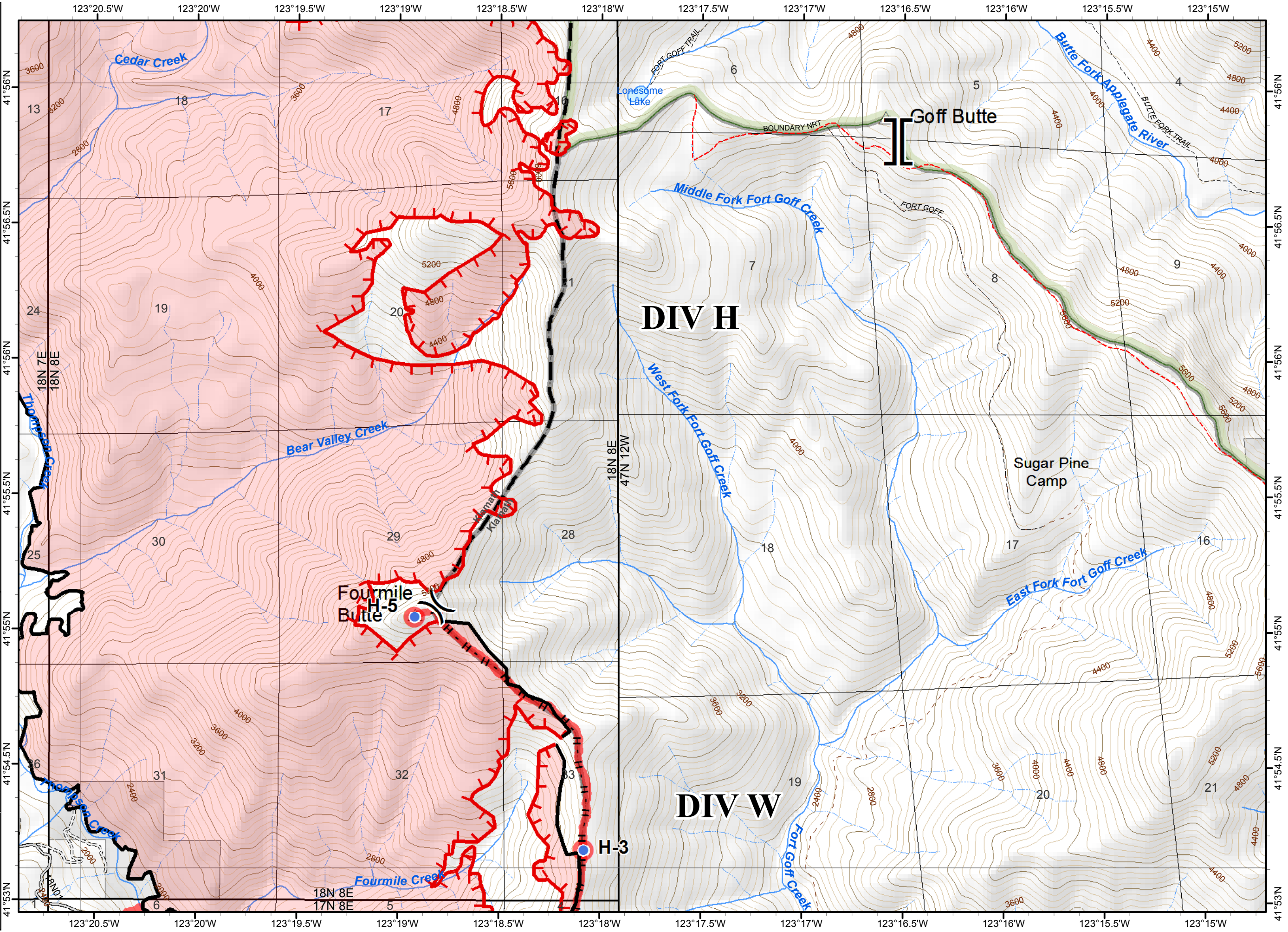


NAD 1983 UTM zone 10N





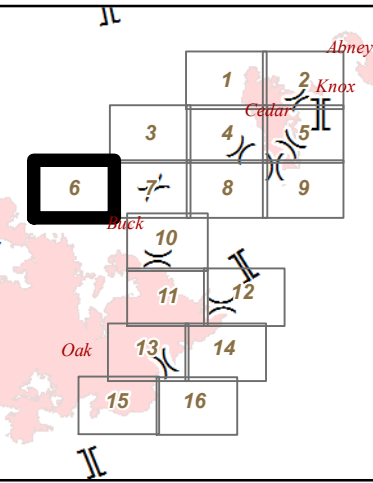
- Division
- Fire Perimeter
- Branch
- Wilderness
- Helispot
- Ranger District Boundary
- Uncontrolled Fire Edge
- Ownership Private
- Completed Line
- Repair Needed
- H - Hand Line
- Repair Needed
- Planned Fire Line



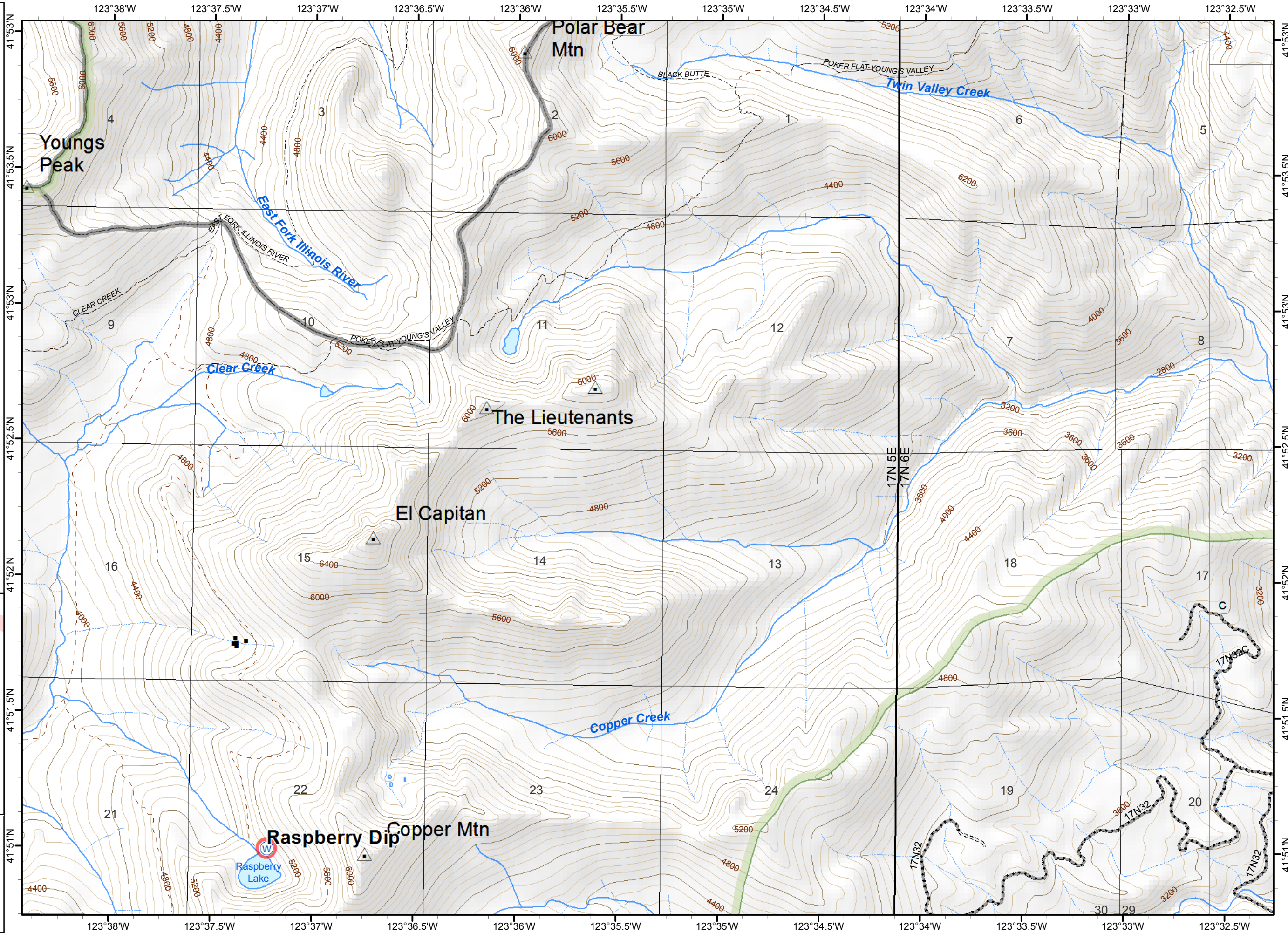
This block contains the official logos for the United States Forest Service (USFS) and the Southern California Fire Department. Below the logos is a compass rose showing cardinal directions (N, S, E, W). At the bottom is a scale bar labeled '0 0.2 0.4 Miles' and the text 'NAD 1983 UTM zone 10N'.



-  Division
-  Branch
-  Water Source
-  Wilderness
-  Ranger District Boundary
-  Ownership Private
-  Repair Needed

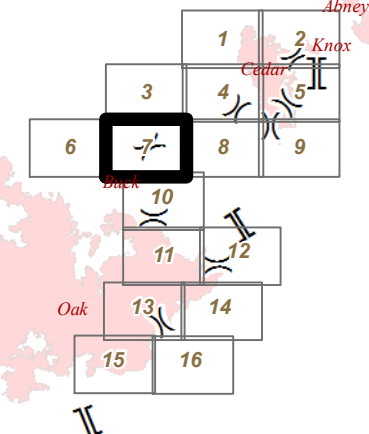


NAD 1983 UTM zone 10N

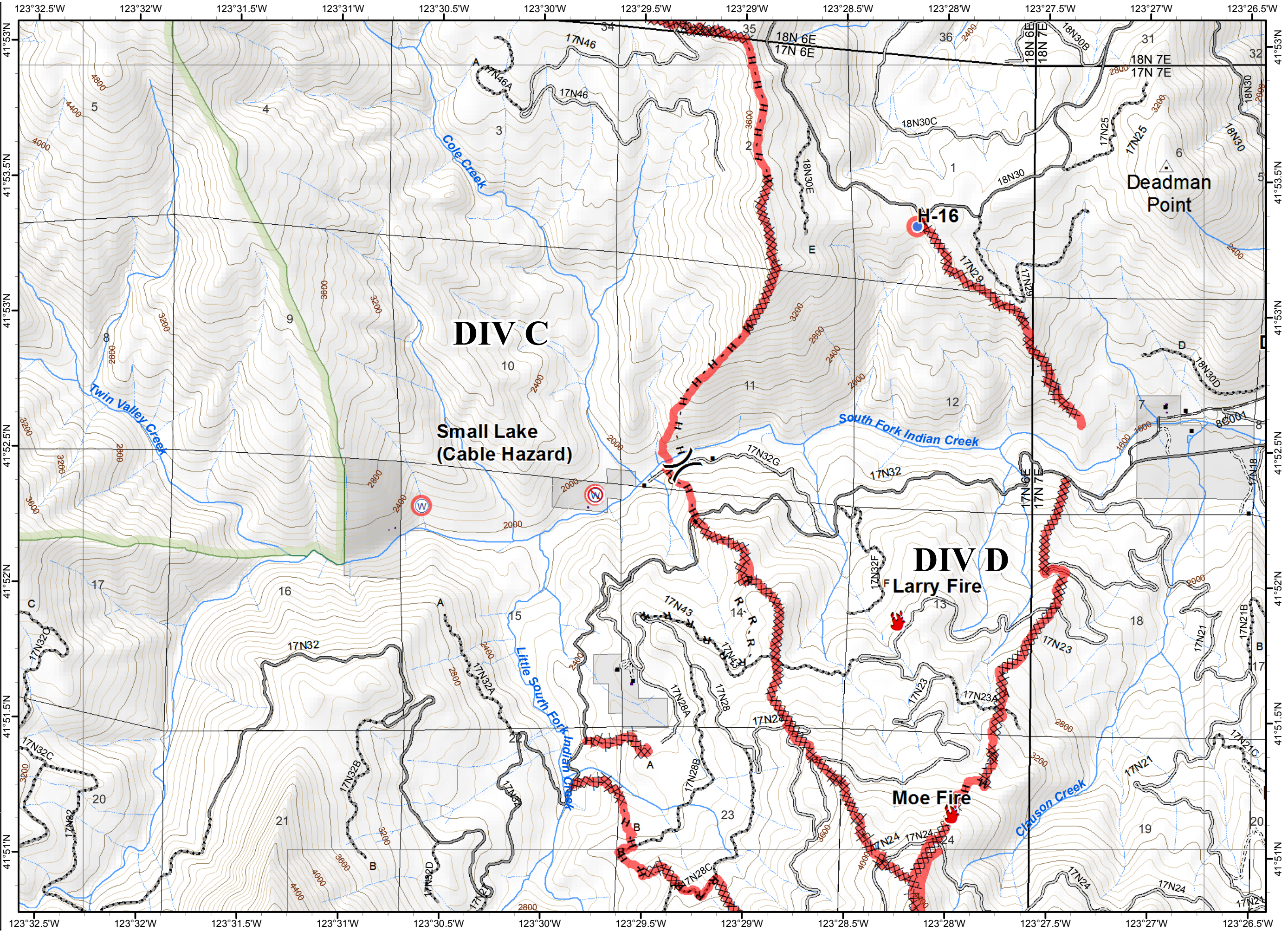




- Division
- Branch
- Fire Location
- Helispot
- Water Source
- Restricted Water Source
- Completed Dozer Line
- Hand Line
- Road as Completed Line
- Planned Fire Line
- Wilderness
- Ranger District Boundary
- Ownership Private
- Repair Needed
- Repair Needed

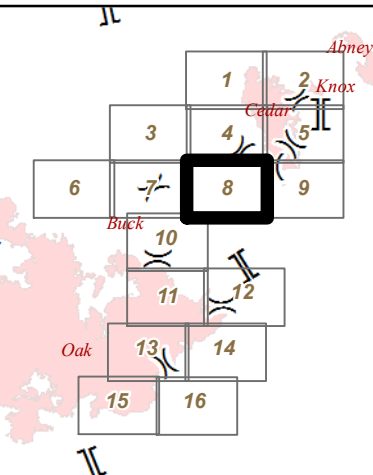


NAD 1983 UTM zone 10N



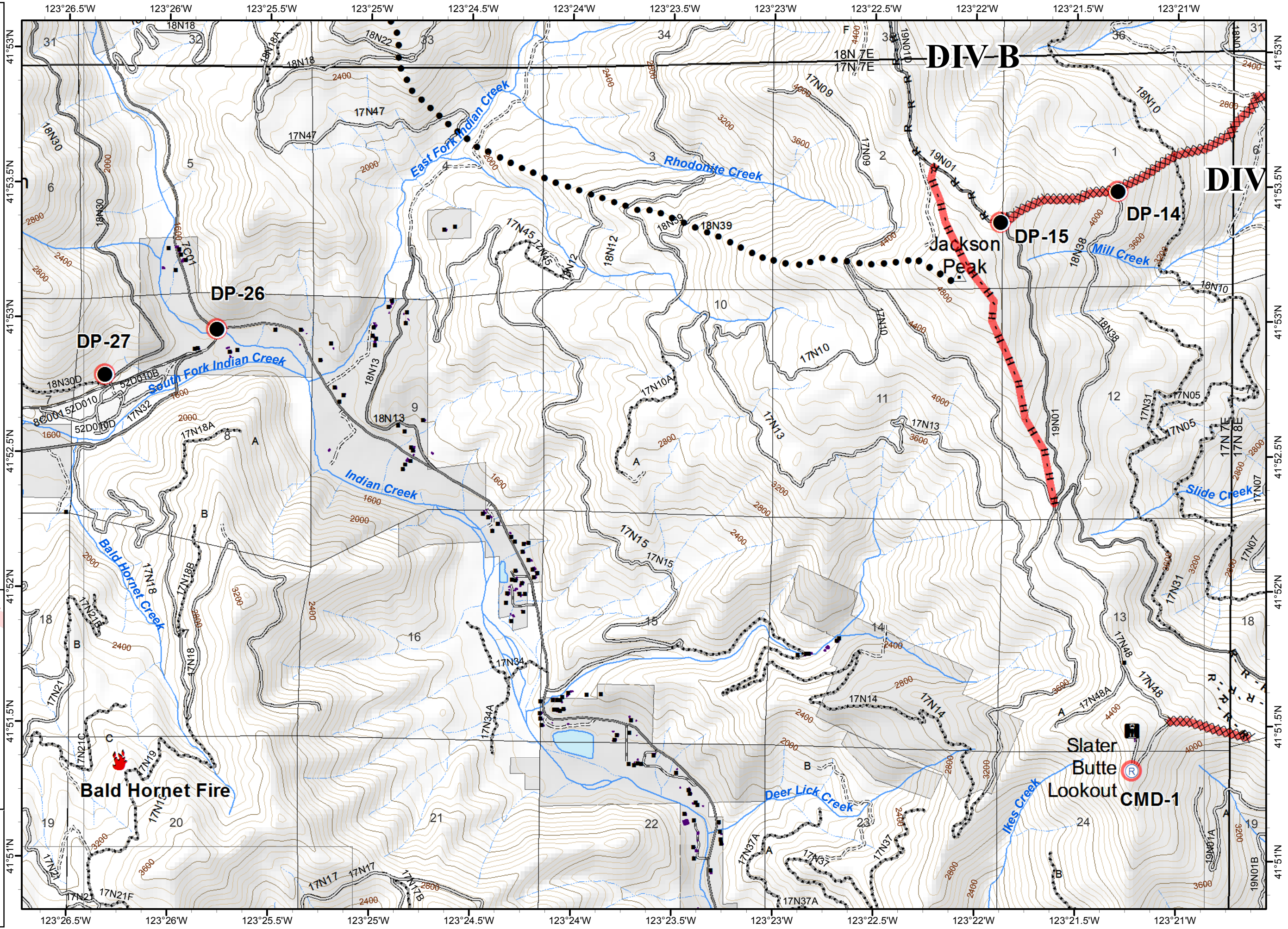


- ( ) Division
- [ ] Branch
- Drop Point
- 🔥 Fire Location
- Ⓡ Repeater
- Planned  
● Secondary Line
- XXXX Completed Dozer Line
- H - Hand Line
- R - Completed Line
- 🏠 Ranger District Boundary
- ▭ Ownership Private
- Repair Needed
- ▬ Repair Needed



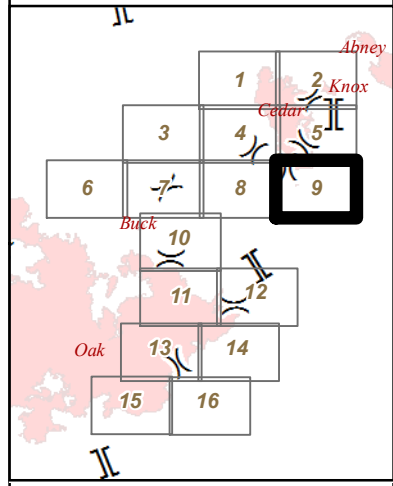
0 0.2 0.4 Miles

NAD 1983 UTM zone 10N

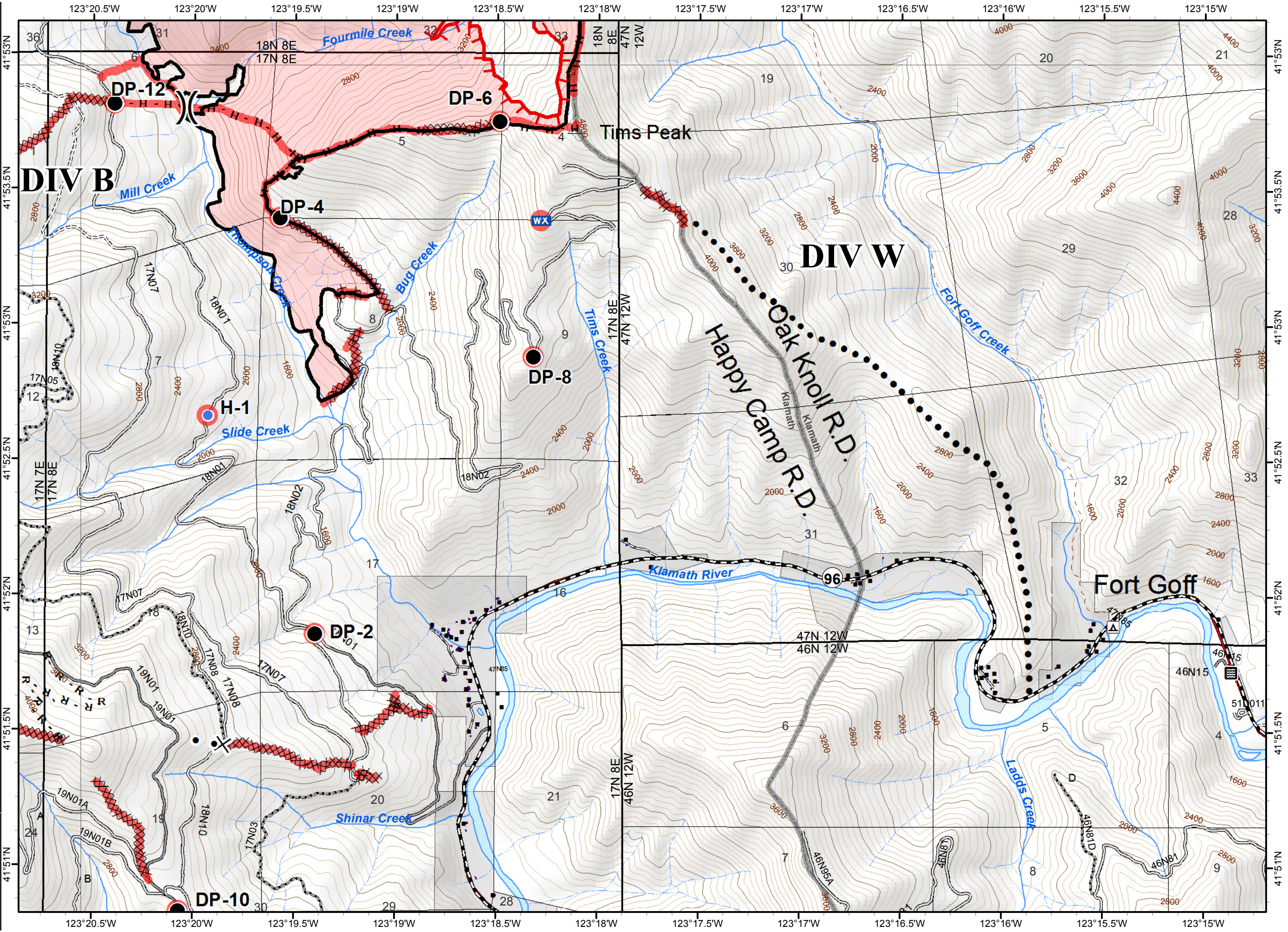




- Division
- Branch
- Drop Point
- Helispot
- Mobile Weather Unit
- Uncontrolled Fire Edge
- Planned Secondary Line
- Completed Dozer Line
- Completed Line
- Hand Line
- Road as Completed Line
- Proposed Dozer Line
- Fire Perimeter
- Ranger District Boundary
- Ownership Private
- Repair Needed
- Repair Needed

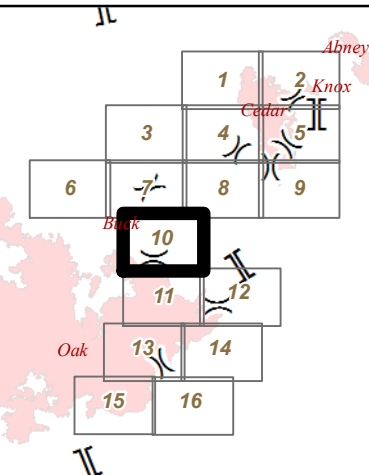
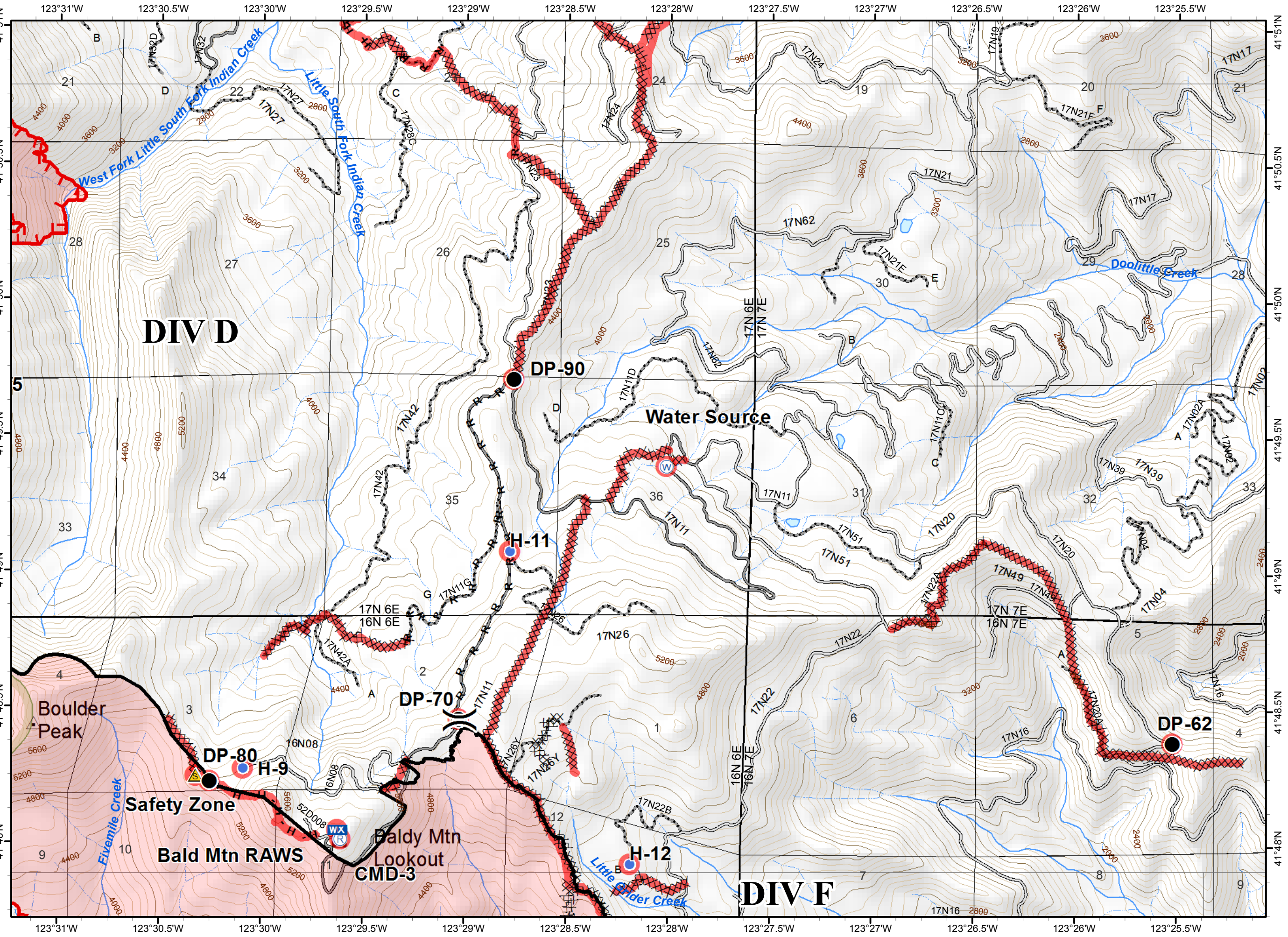


NAD 1983 UTM zone 10N



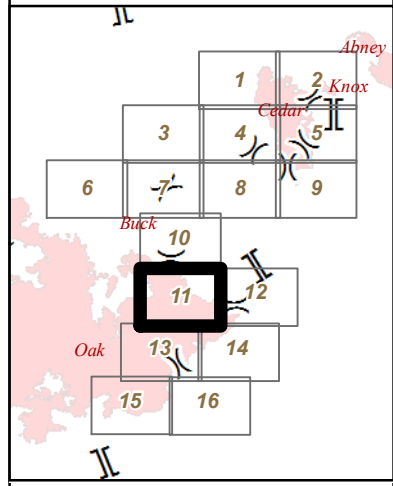


- ( ) Division
- [ ] Branch
- Drop Point
- Helispot
- WX Mobile Weather Unit
- Ⓡ Repeater
- ⚠ Safety Zone
- Ⓜ Water Source
- Uncontrolled Fire Edge
- ⊗ Completed Dozer Line
- Completed Line
- H - Hand Line
- R - Road as Completed Line
- Planned Fire Line
- ▭ Fire Perimeter
- ▭ Wilderness
- ▭ Ranger District Boundary
- Repair Needed
- ▭ Repair Needed

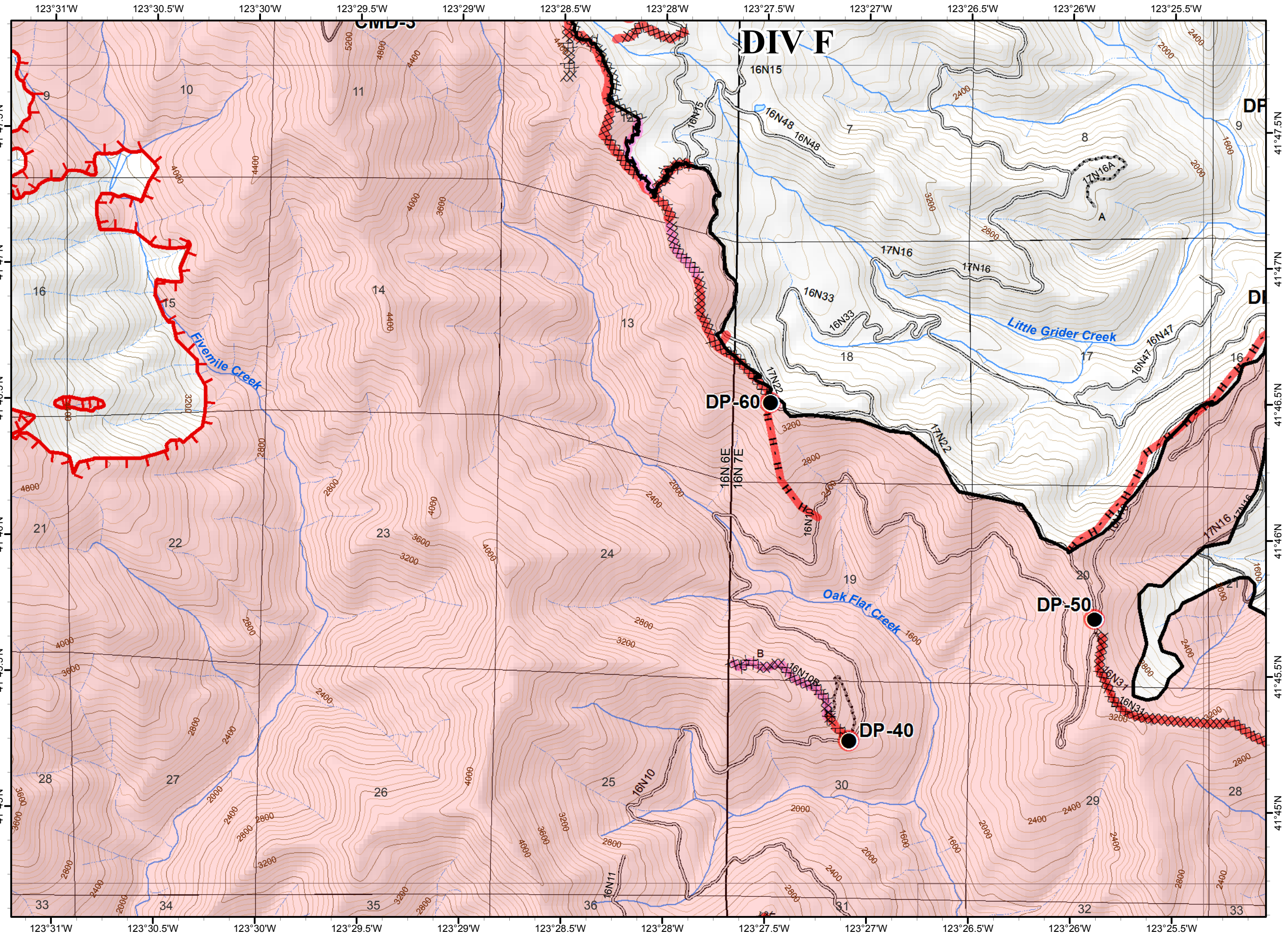


- Division
- Branch
- Drop Point
- Uncontrolled Fire Edge
- Completed Dozer Line
- Completed Line
- H - Hand Line
- Fire Perimeter
- Ranger District Boundary
- Repair Needed
- Ready to be Worked On
- Repair Needed



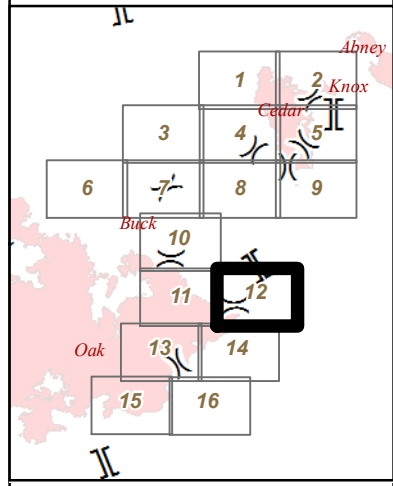
0 0.2 0.4 Miles

NAD 1983 UTM zone 10N



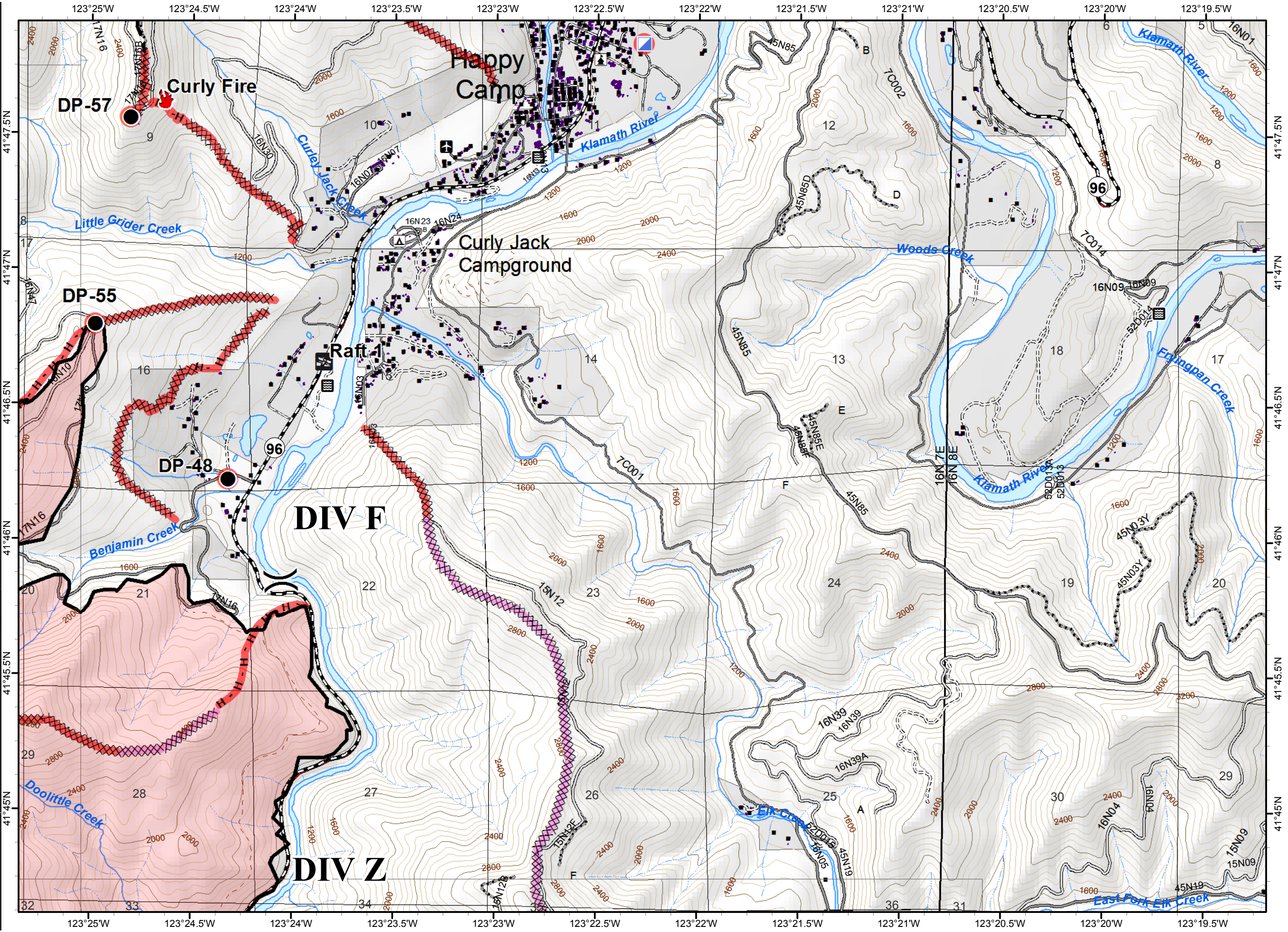


- Division
- Branch
- Boat Ramp
- Drop Point
- Fire Location
- Incident Command Post
- Completed Dozer Line
- Completed Line
- Hand Line
- Planned Fire Line
- Fire Perimeter
- Ranger District Boundary
- Ownership Private
- Repair Needed
- Ready to be Worked On
- Repair Needed



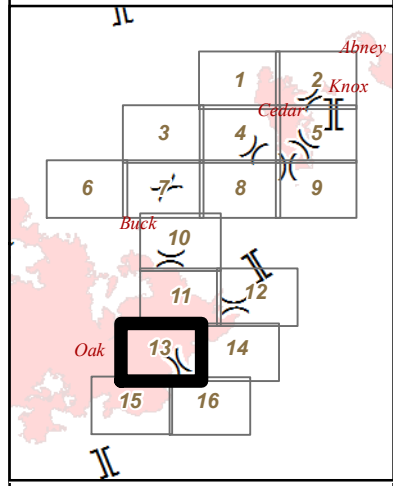
0 0.2 0.4 Miles

NAD 1983 UTM zone 10N



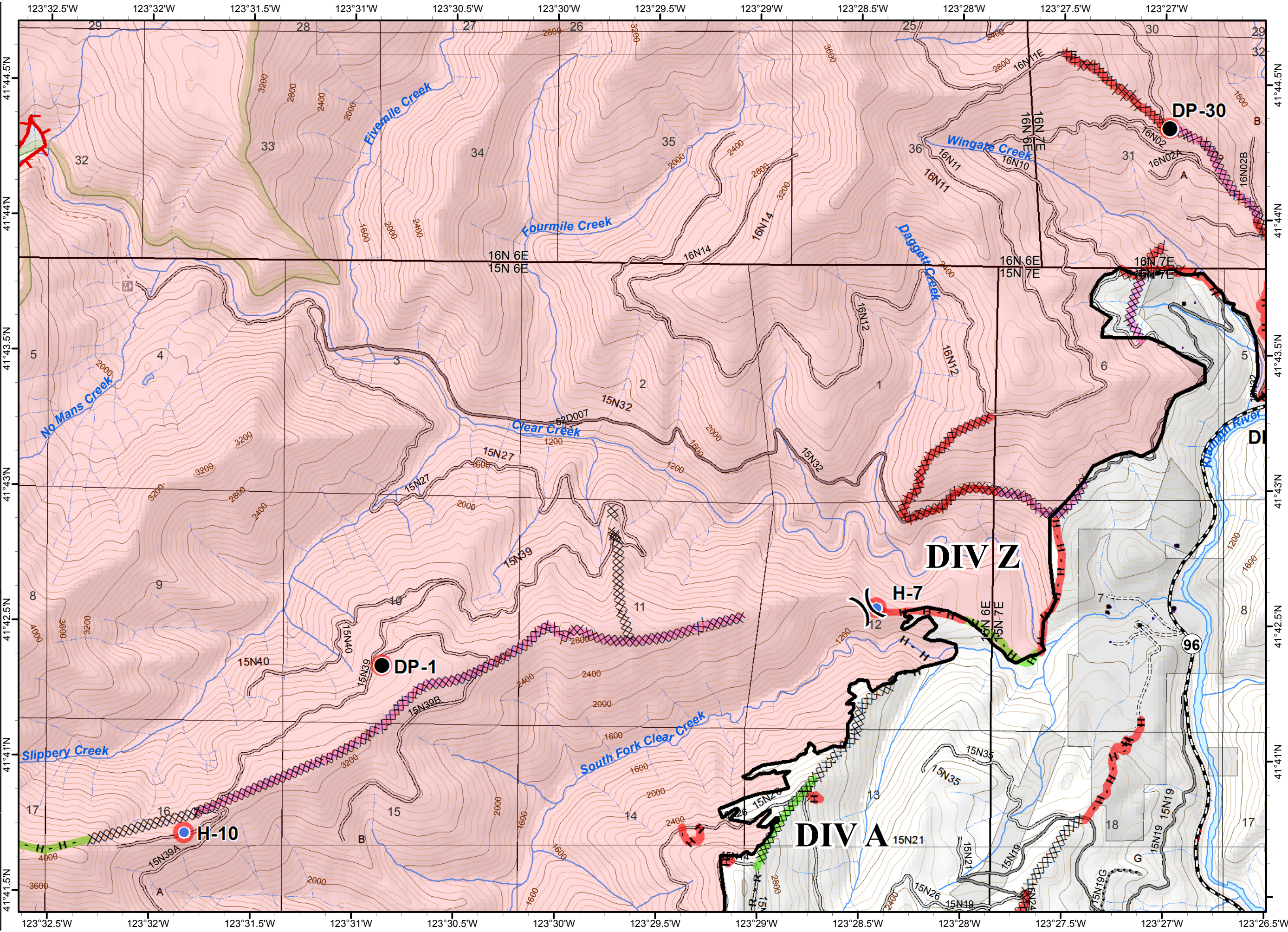


- ( ) Division
- [ ] Branch
- Drop Point
- Helispot
- Uncontrolled Fire Edge
- XXXX Completed Dozer Line
- Completed Line
- H - Hand Line
- R - Completed Line
- Fire Perimeter
- Wilderness
- Ranger District Boundary
- Ownership Private
- Repair Needed
- Completed - Inspected
- Ready to be Worked On
- Repair Needed



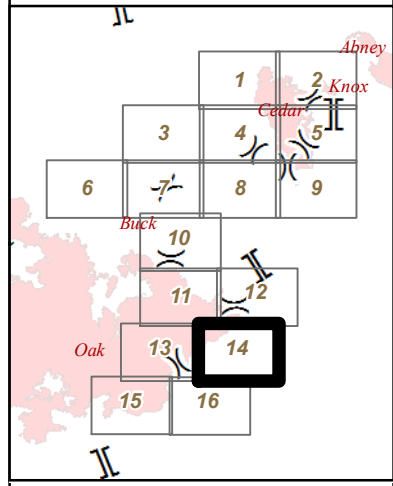
0 0.2 0.4 Miles

NAD 1983 UTM zone 10N

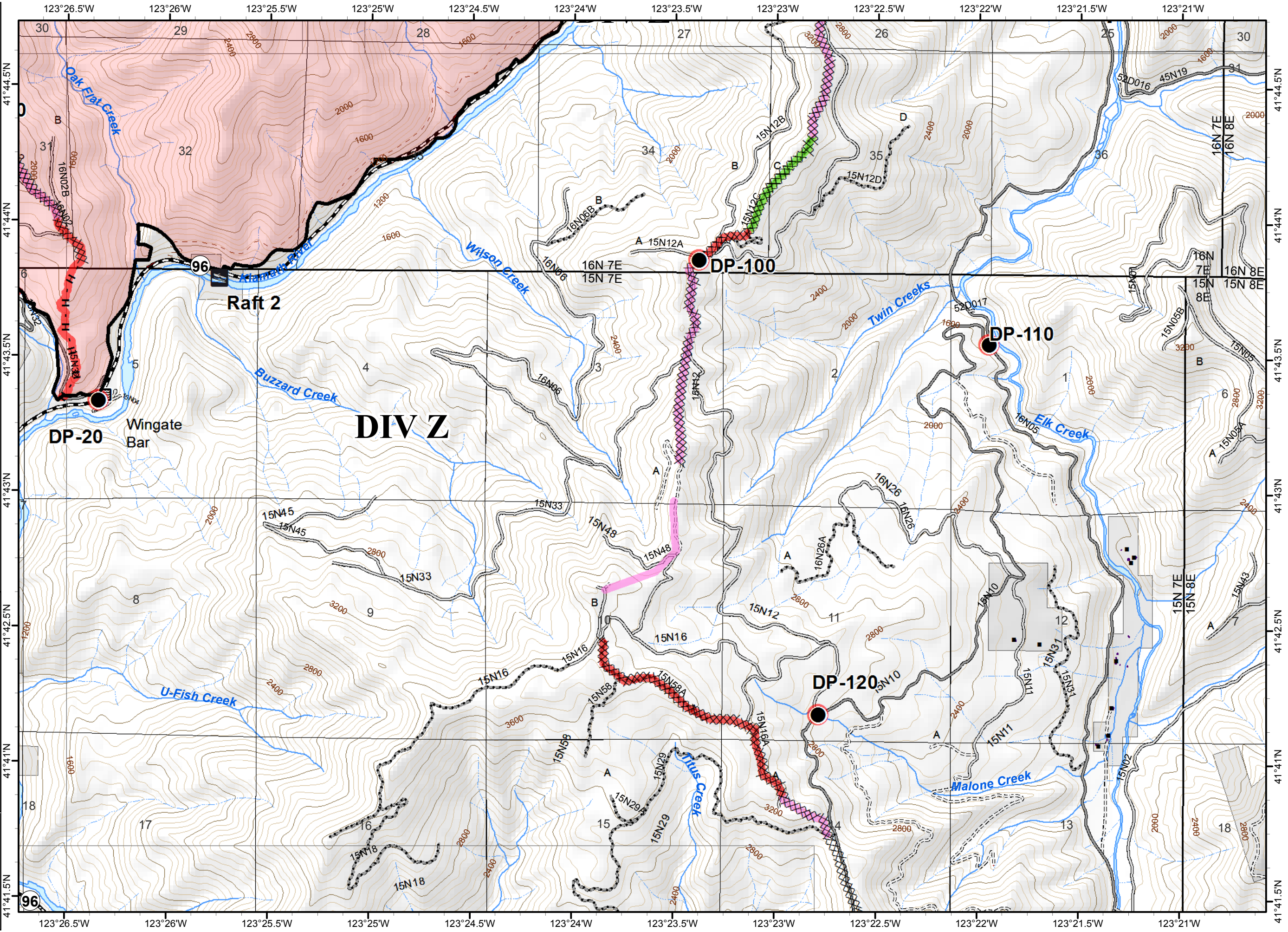




- Division
- Branch
- Boat Ramp
- Drop Point
- Completed Dozer Line
- Completed Line
- Hand Line
- Fire Perimeter
- Ranger District Boundary
- Ownership Private
- Repair Needed
- Completed - Inspected
- Ready to be Worked On
- Repair Needed

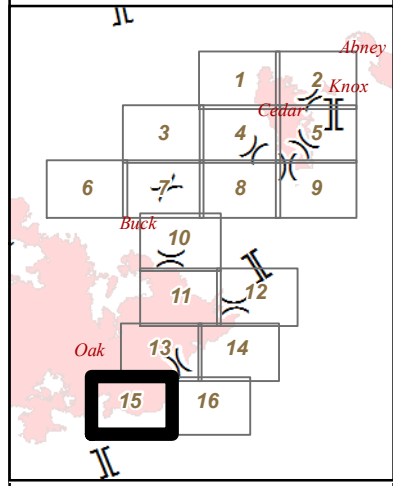


NAD 1983 UTM zone 10N



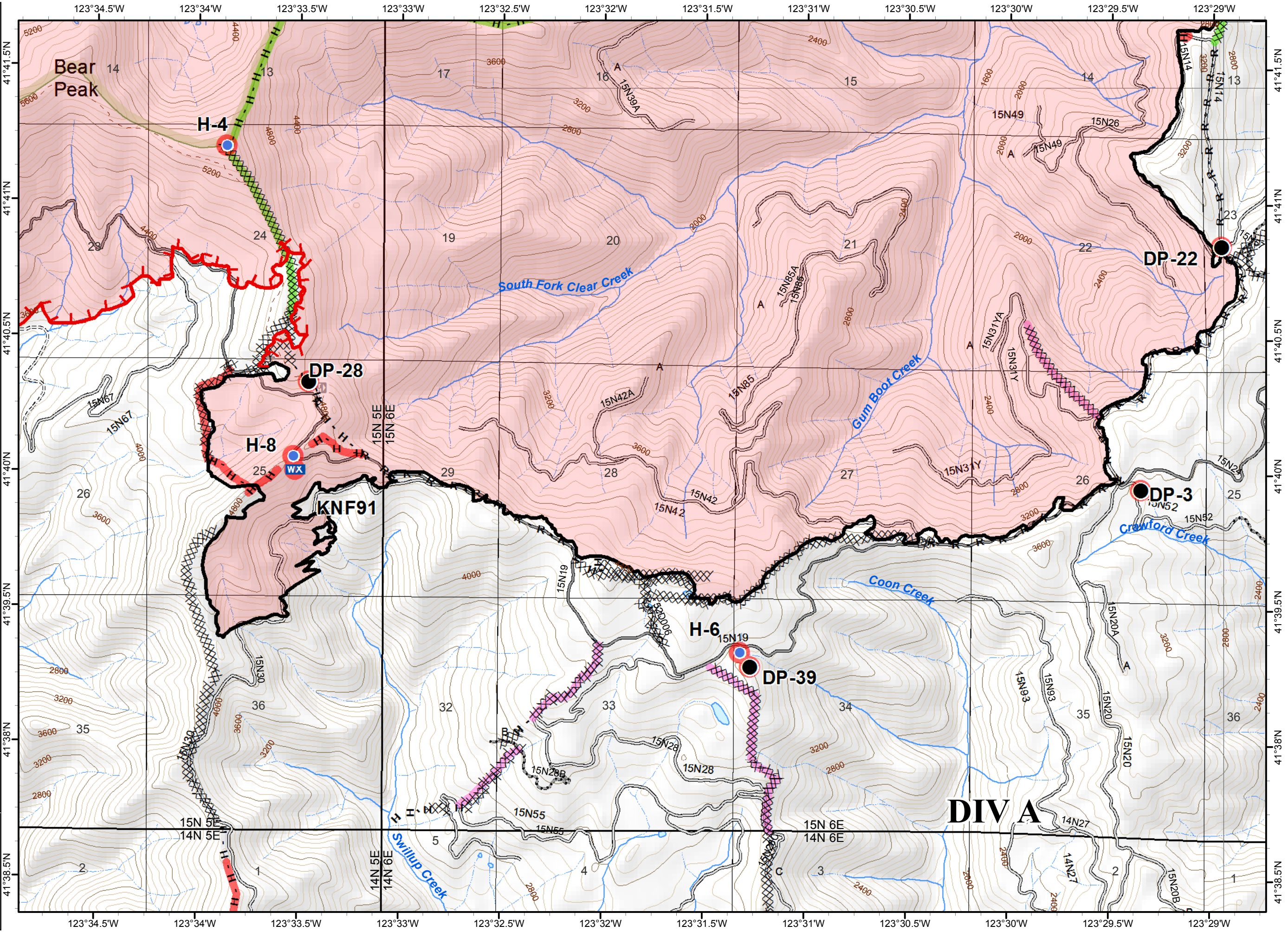


- ( ) Division
- [ ] Branch
- Drop Point
- Helispot
- WX Mobile Weather Unit
- Uncontrolled Fire Edge
- ⊗ Completed Dozer Line
- Completed Line
- H - Hand Line
- R - Road as Completed Line
- ▭ Fire Perimeter
- ▭ Wilderness
- ▭ Ranger District Boundary
- Repair Needed
- ▭ Completed - Inspected
- ▭ Ready to be Worked On
- ▭ Repair Needed



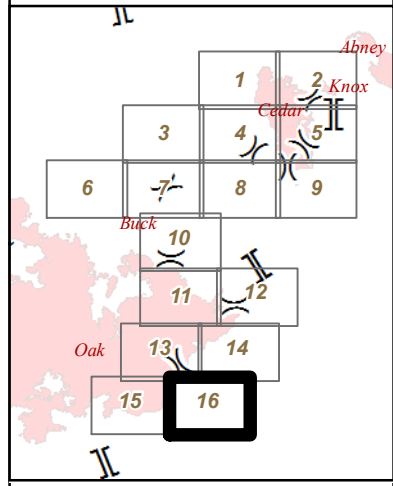
0 0.2 0.4 Miles

NAD 1983 UTM zone 10N





- ( ) Division
- [ ] Branch
- Drop Point
- ⊗ Completed Dozer Line
- Completed Line
- R - Completed Line
- ▭ Fire Perimeter
- ▭ Ranger District Boundary
- ▭ Ownership Private
- Repair Needed
- Completed - Inspected
- Repair Needed



0 0.2 0.4 Miles

NAD 1983 UTM zone 10N

