



ECLIPSE COMPLEX
CA-KNF 006098
SEPTEMBER 17 2017
OPERATIONS
DAY SHIFT

BRANCH I & IV

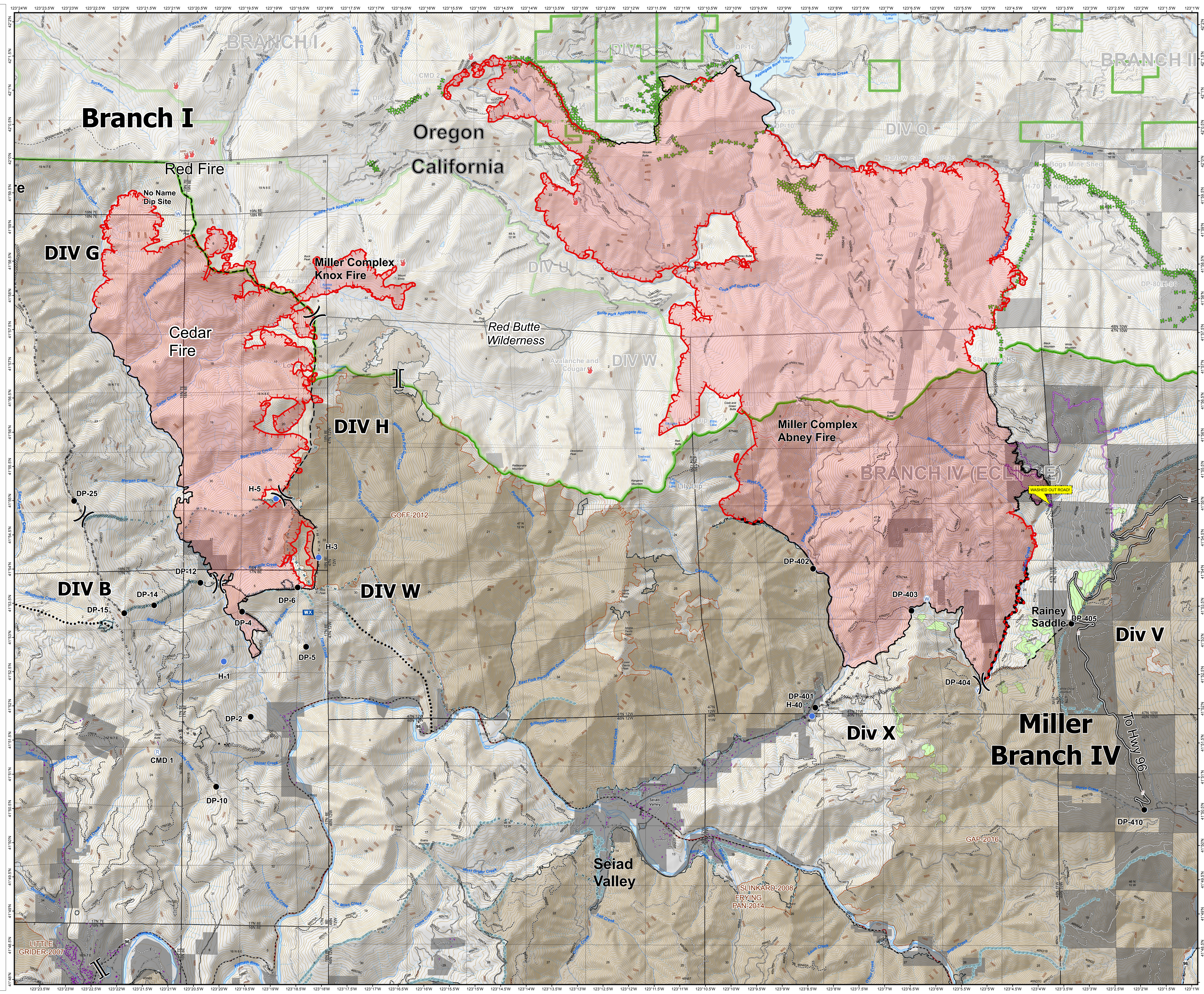
- () Division
- [] Branch
- ICP Incident Command Post
- C Camp
- Drop Point
- 🔥 Fire Location
- 🚁 Helibase
- 📡 Helispot
- 👁 Lookout
- WX Mobile Weather Unit
- 📻 Repeater
- ⚠ Safety Zone
- 💧 Water Source
- 🚫 Restricted Water Source
- 🚢 Raft Landing
- 🚚 Road Washout
- 🔴 Uncontrolled Fire Edge
- ⊘ Completed Dozer Line
- Completed Line
- Hand Line
- Road as Completed Line
- ◇ Aerial Retardant Drop
- Planned Fire Line
- ⋯ Planned Secondary Line
- ✕ Proposed Dozer Line
- (XXXX) Ridge / Geographic Feature
- Containment Line
- Miller Completed Line
- ⊘ Miller Completed Dozer Line
- Miller Completed Hand Line
- Miller Road as Completed Line
- 00000 Past Ridge/Geographic Feature
- ⋯ Past Highlighted Man Made Feature
- Past Hand Line
- ⊘ Past Completed Dozer Line
- Past Completed Line
- 🌲 Wilderness
- 📐 Forest Service Admin Boundary
- 🏠 Structures
- 🏞 Old Fire Scar
- 🟢 Contract Units

N
W E
S

0 0.5 1 Miles

80 Foot Contours
1:30,000

Map 9160017
NAD 1983 UTM Zone 10N



LITTLE GRIDER:2007

SLINKARB:2008
FRYING PAN:2014

GAP:2016

GOFF:2012

TO HWY 96