

ECLIPSE COMPLEX
 CA-KNF-006098
 SEPTEMBER 18 2017

IAP MAP
 BRANCH I & II

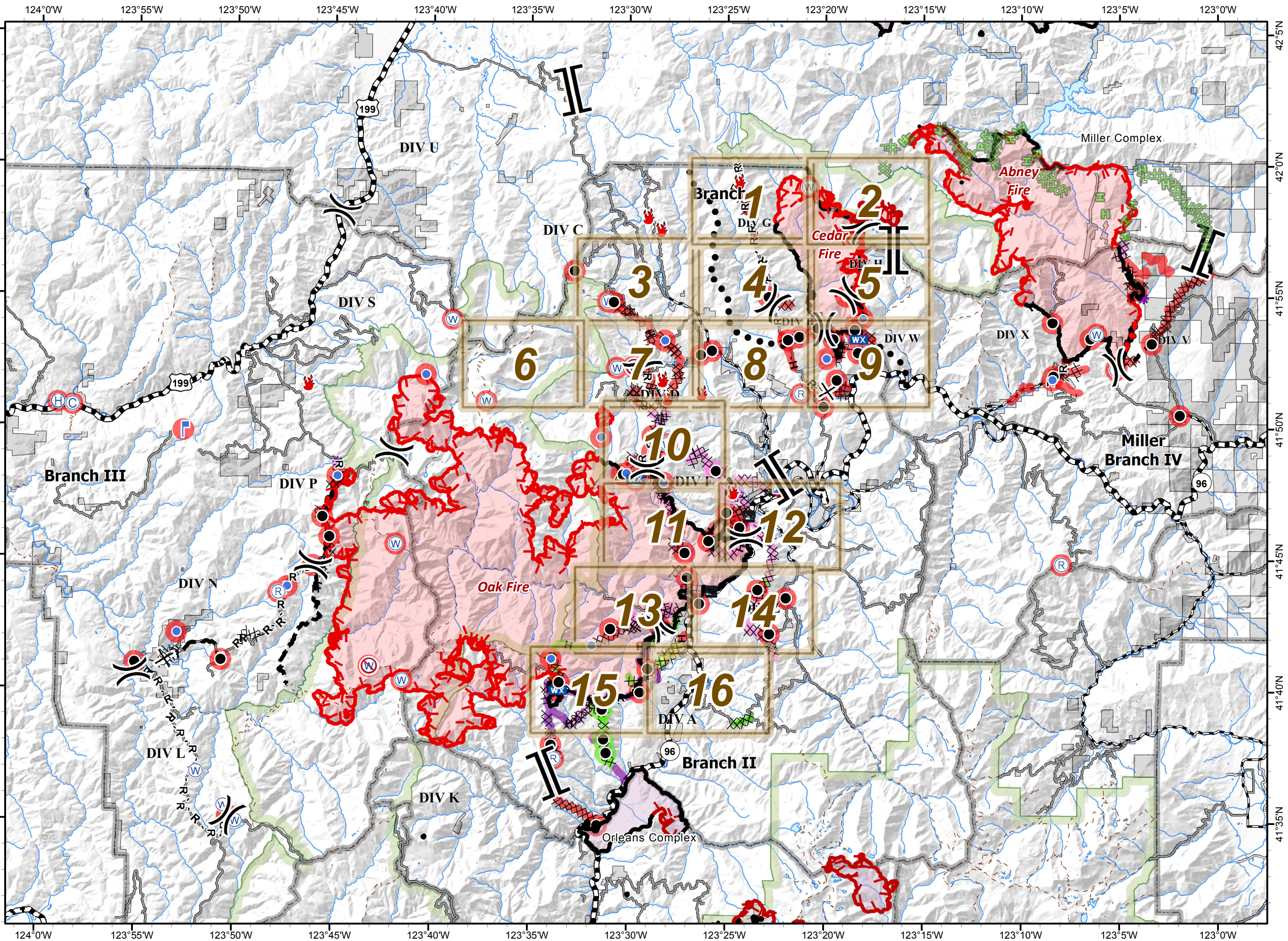
Index

- | | |
|--|--|
| | |
| | |
| | |
| | |
| | |
| | |
| | |
| | |
| | |
| | |
| | |
| | |
| | |
| | |
| | |
| | |
| | |
| | |
| | |
| | |
| | |

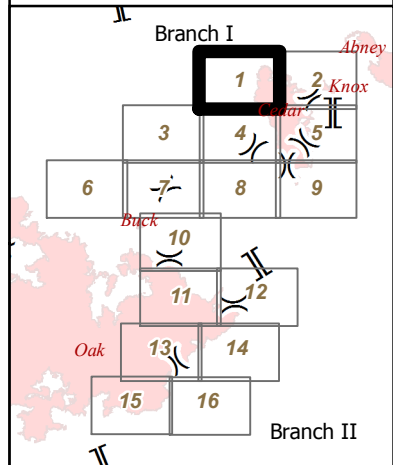


0 2 4 Miles

NAD 1983 UTM zone 10N

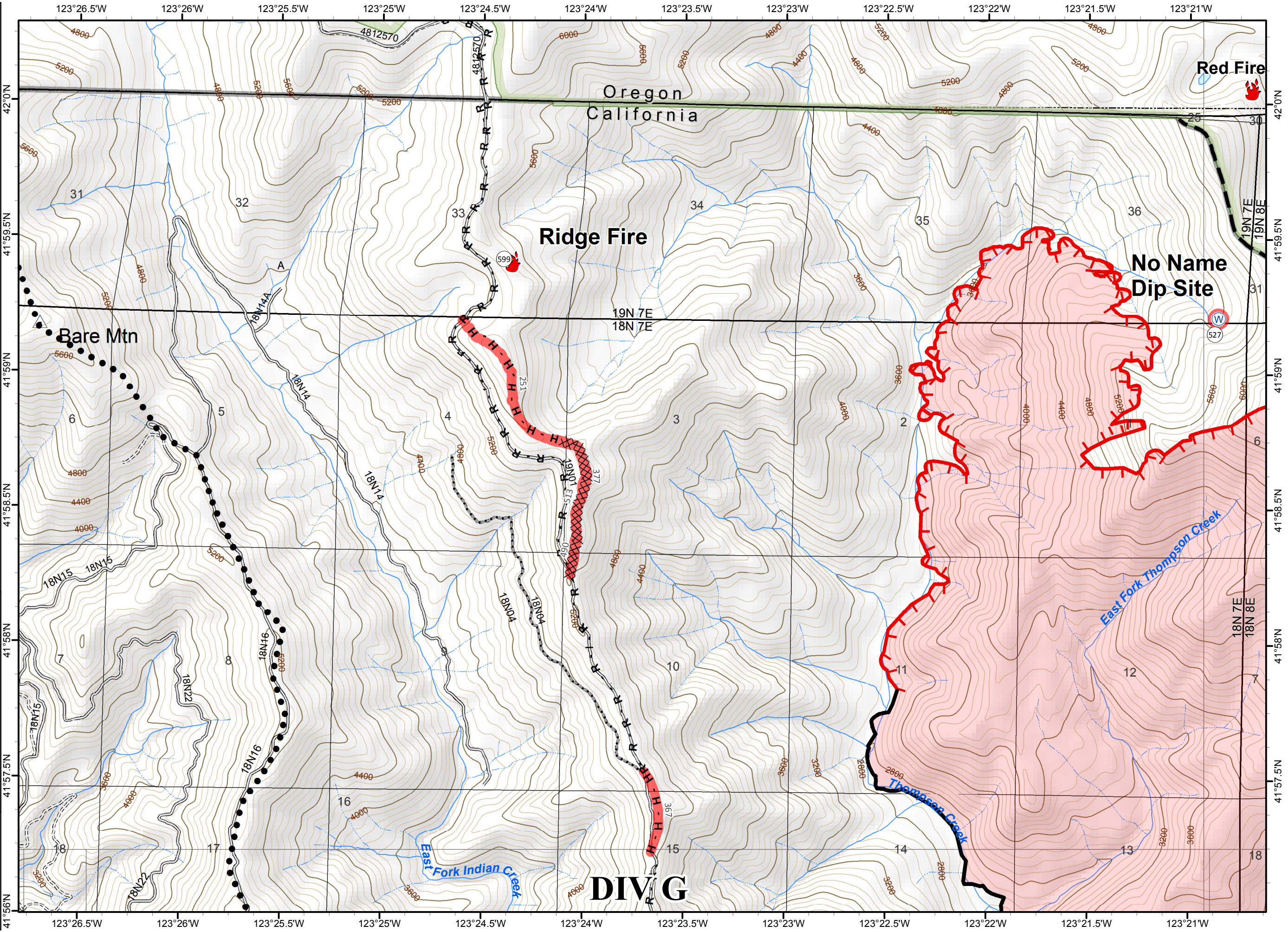


- () Division
- [] Branch
- 🔥 Fire Location
- Ⓜ Water Source
- Uncontrolled Fire Edge
- Planned Secondary Line
- ⊗ Completed Dozer Line
- Completed Line
- H - Hand Line
- R - Road as Completed Line
- Planned Fire Line
- ▭ Ranger District Boundary
- ▭ Fire Perimeter
- ▭ Wilderness
- Repair Needed
- ▭ Repair Needed

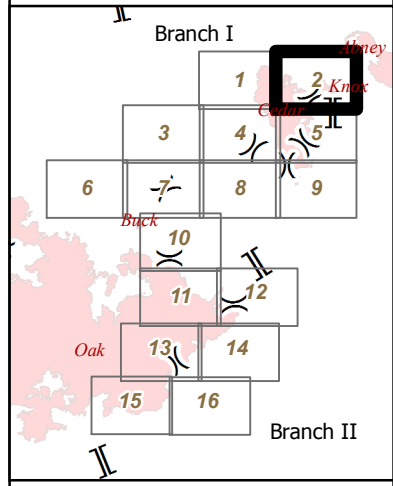


0 0.2 0.4 Miles

NAD 1983 UTM zone 10N

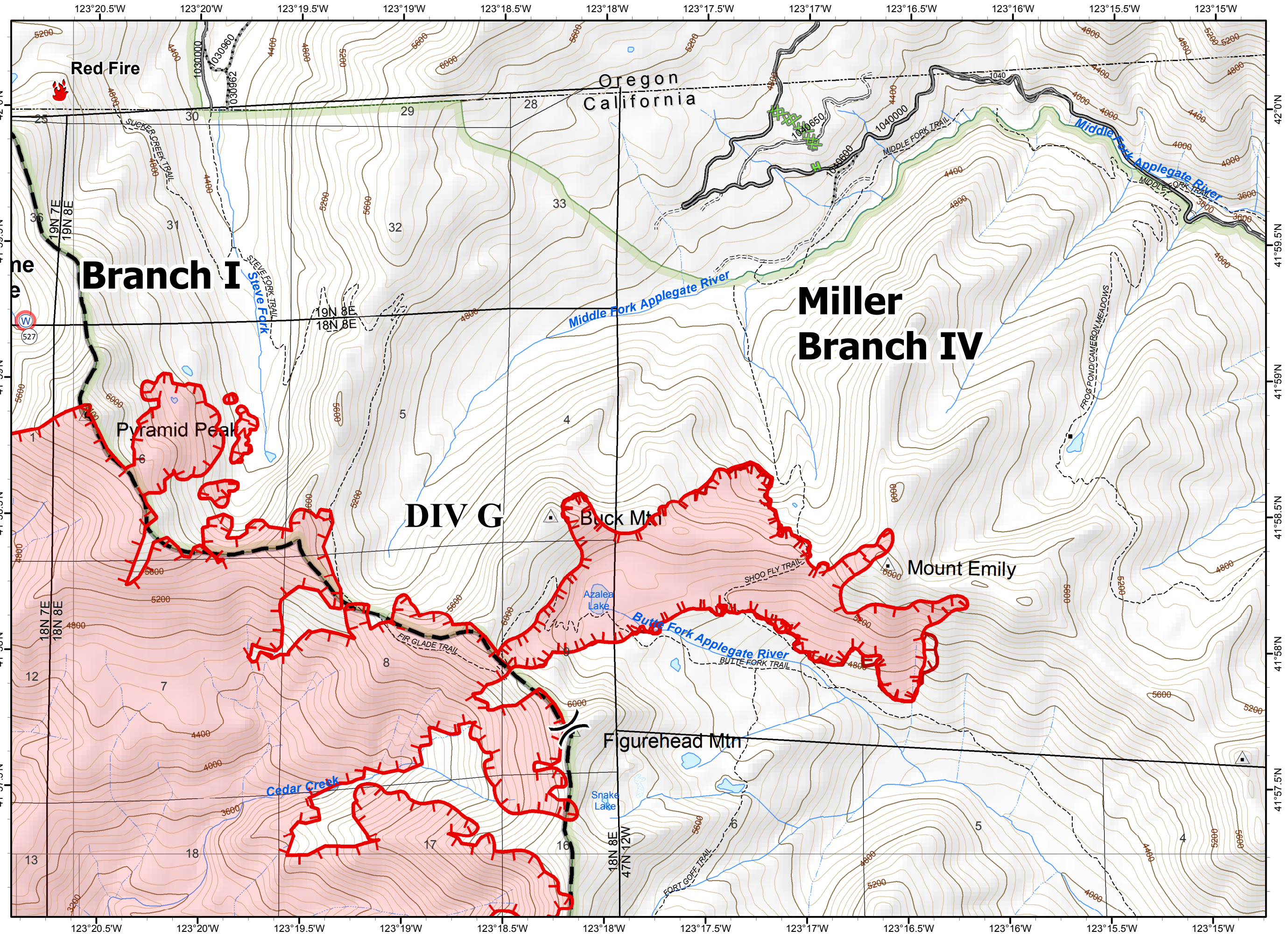


- () Division
- [] Branch
- Miller Completed Dozer Line
- Miller Completed Hand Line
- Water Source
- Uncontrolled Fire Edge
- Planned Fire Line
- Ranger District Boundary
- Fire Perimeter
- Uncontrolled Fire Edge
- Wilderness
- Ownership Private
- Repair Needed

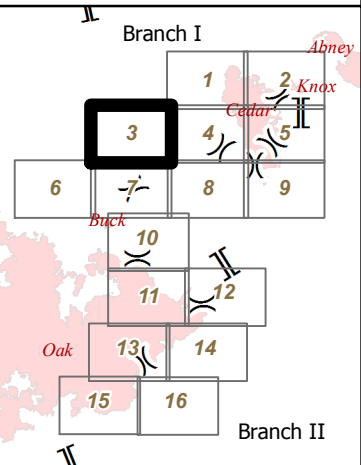
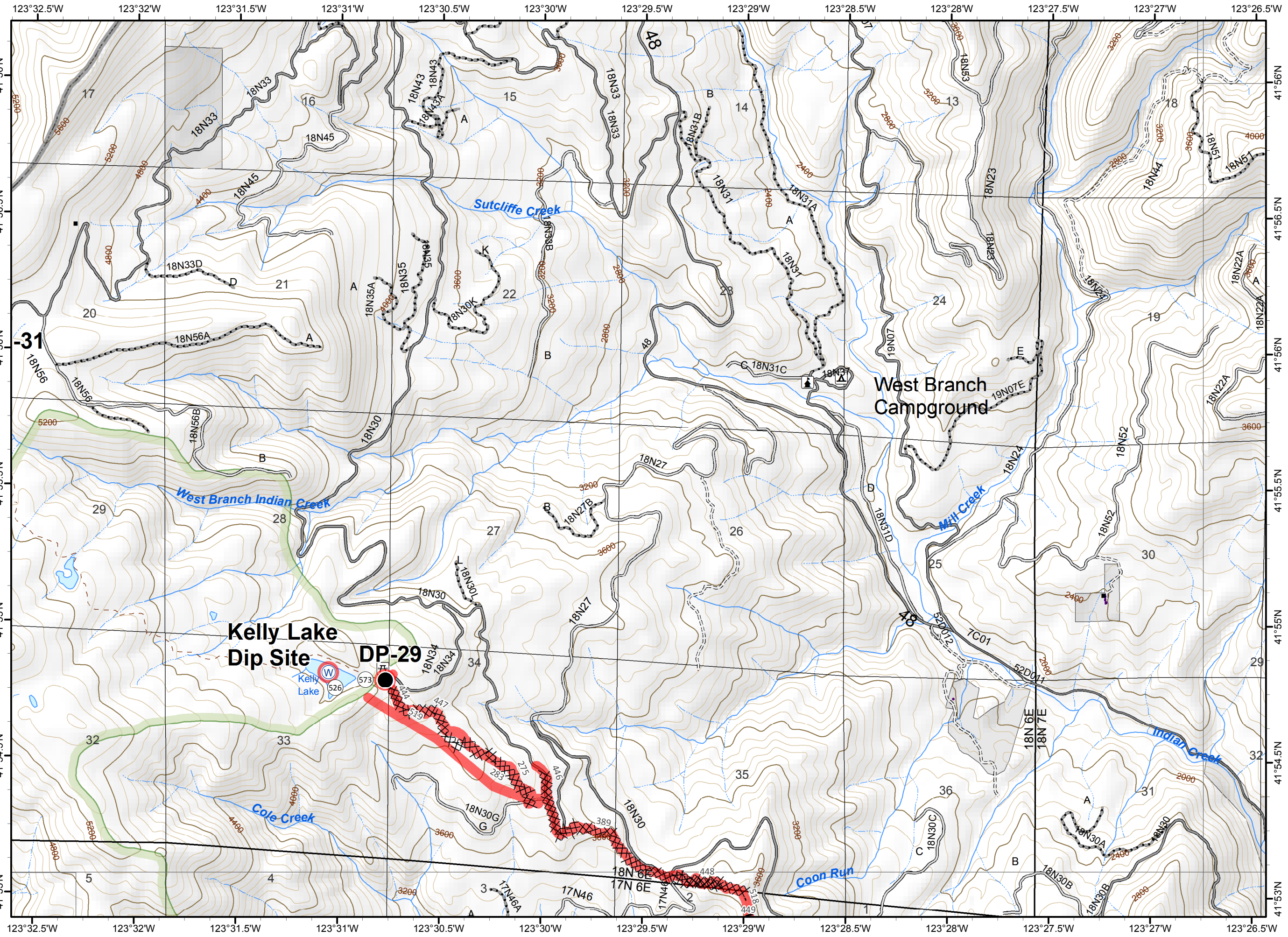


0 0.2 0.4 Miles

NAD 1983 UTM zone 10N



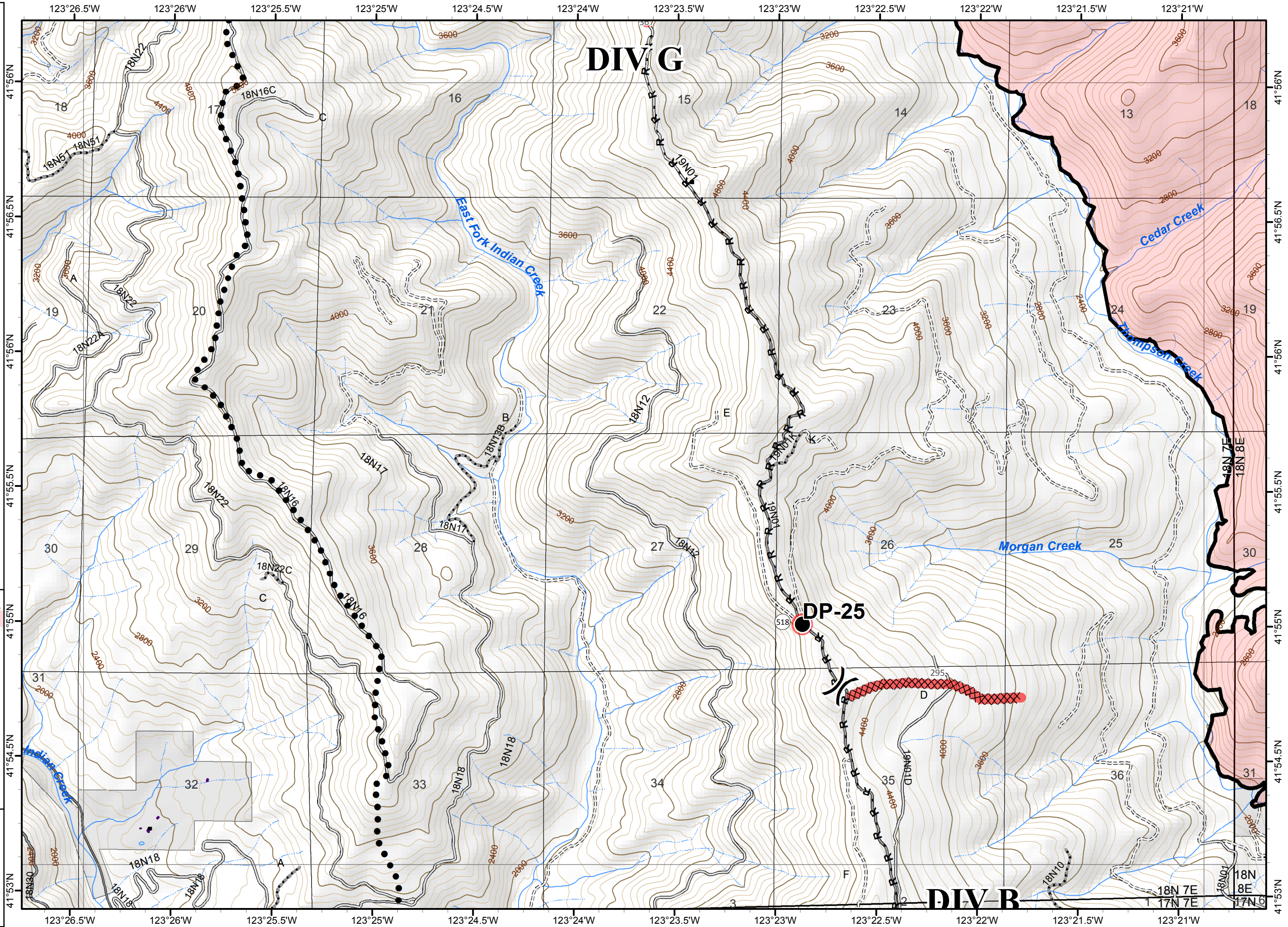
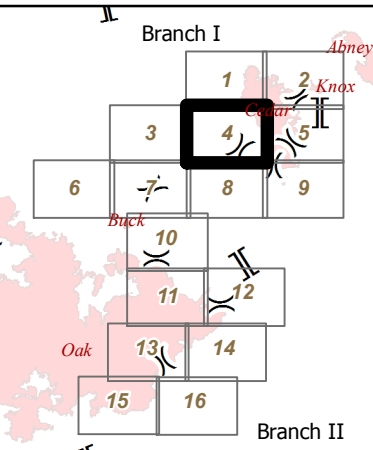
- () Division
- ▭ Ranger District Boundary
- ▭ Branch
- Drop Point
- ⊙ Water Source
- ⊗ Completed Dozer Line
- H - Hand Line
- ▭ Wilderness
- ▭ Ownership Private
- Repair Needed
- ▭ Repair Needed



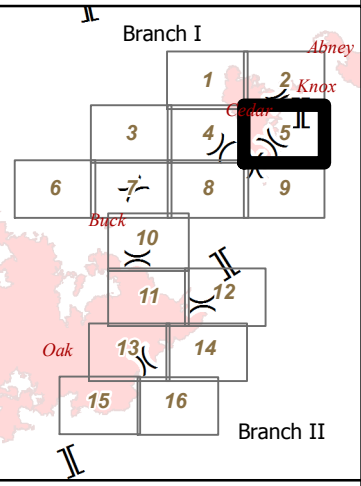
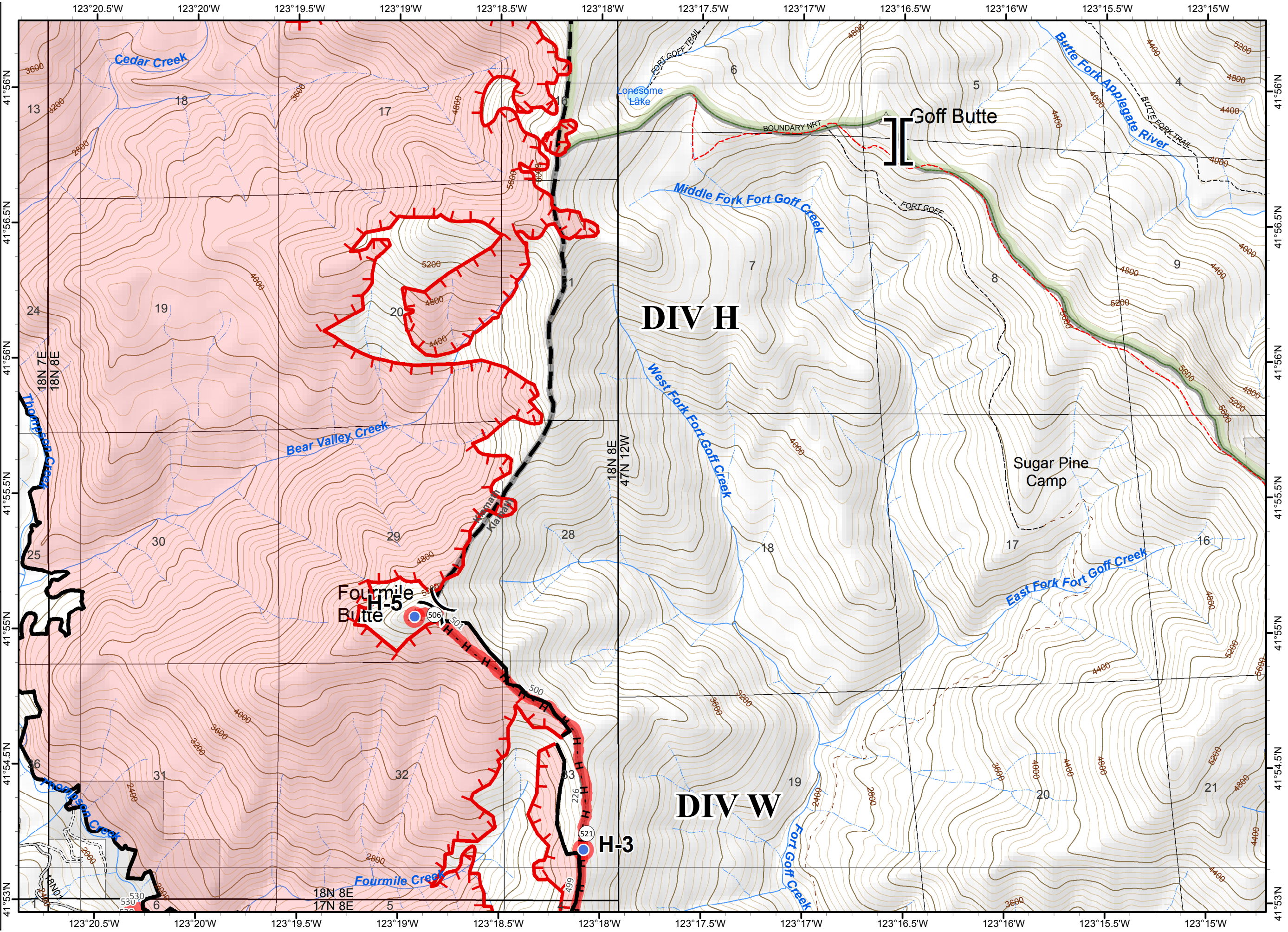
0 0.2 0.4 Miles

NAD 1983 UTM zone 10N

- () Division
- ▭ Ranger District Boundary
- ▭ Branch
- Drop Point
- Planned Secondary Line
- ▨ Completed Dozer Line
- ▬ Completed Line
- H - Hand Line
- R - Road as Completed Line
- ▭ Fire Perimeter
- ▭ Ownership Private
- Repair Needed
- ▨ Repair Needed



- Division
- Branch
- Helispot
- Uncontrolled Fire Edge
- Completed Line
- Hand Line
- Planned Fire Line
- Ranger District Boundary
- Fire Perimeter
- Wilderness
- Ownership Private
- Repair Needed



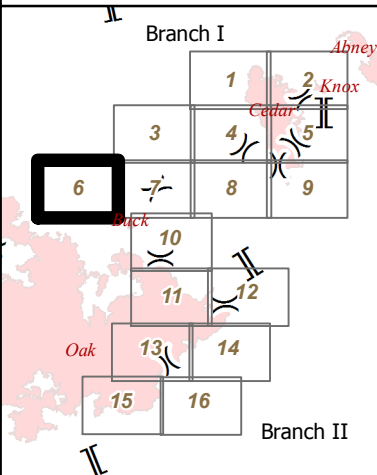
US FOREST SERVICE
 DEPARTMENT OF AGRICULTURE

SOUTHERN CALIFORNIA
 FIRE INCIDENT RESPONSE TEAM

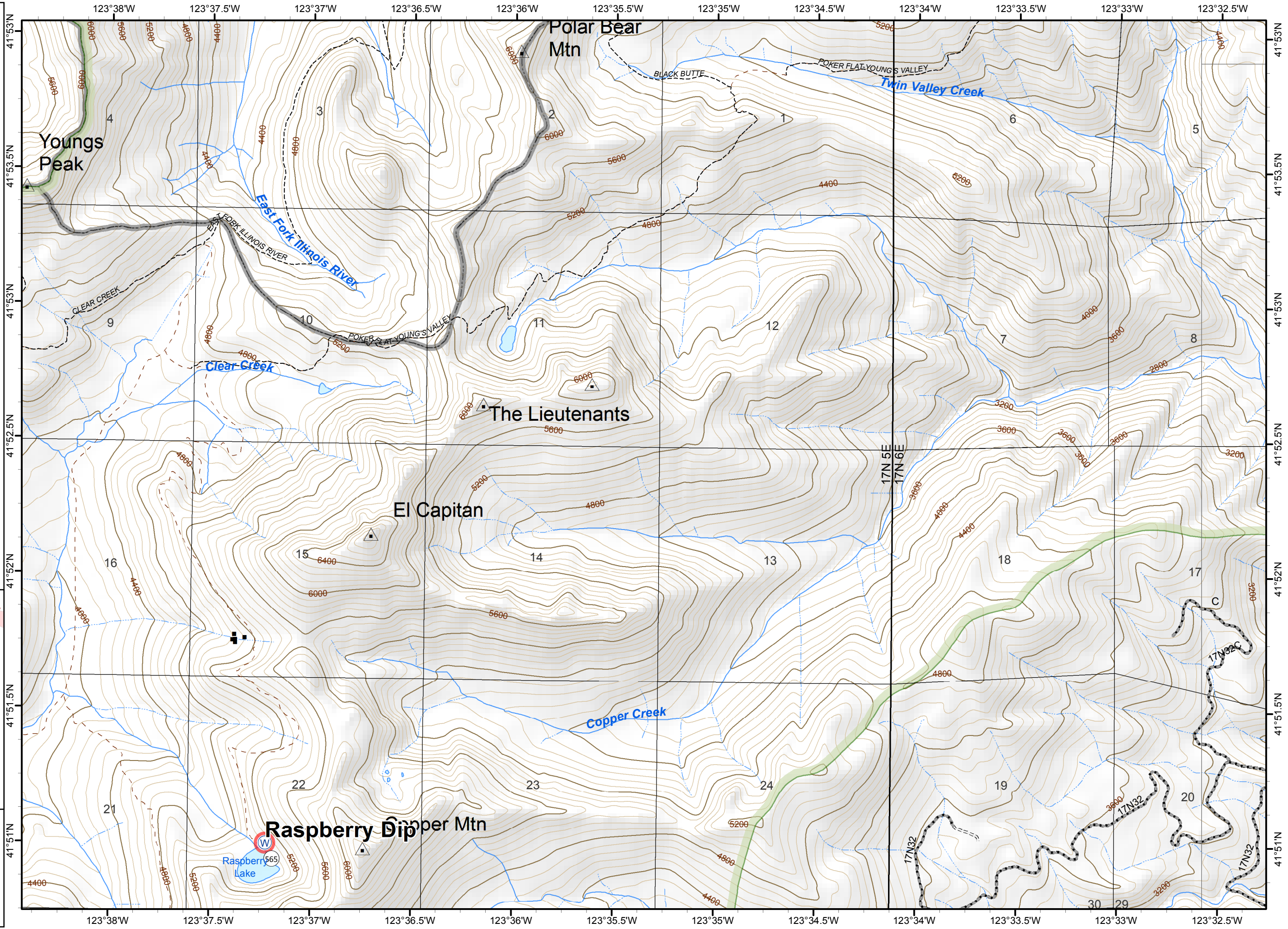
0 0.2 0.4 Miles

NAD 1983 UTM zone 10N

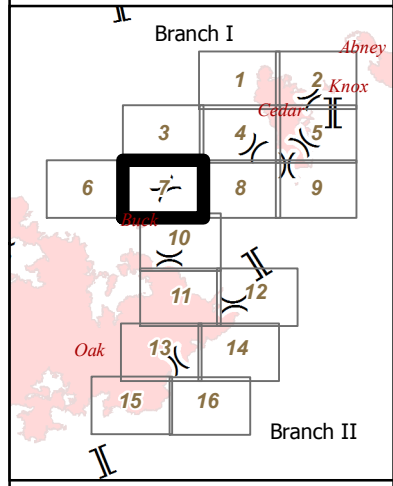
- (X) Division
- (II) Branch
- (W) Water Source
- Ranger District Boundary
- Wilderness
- Ownership Private
- Repair Needed



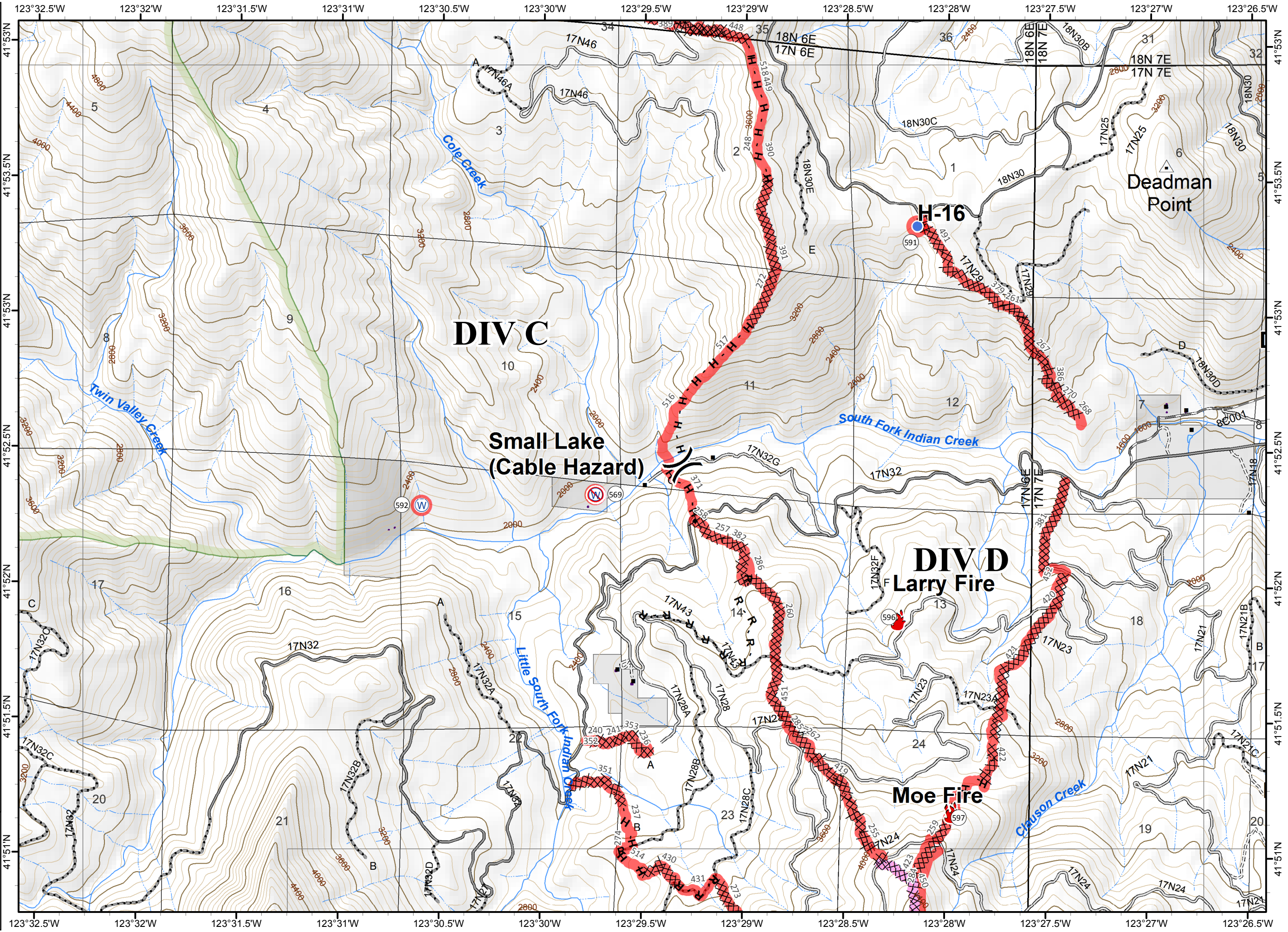
NAD 1983 UTM zone 10N



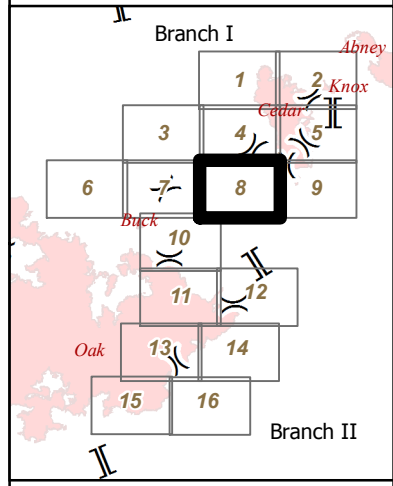
- Division
- Branch
- Fire Location
- Helispot
- Water Source
- Restricted Water Source
- Completed Dozer Line
- H - Hand Line
- R - Completed Road
- Planned Fire Line
- Ranger District Boundary
- Wilderness
- Ownership Private
- Repair Needed
- Ready to be Worked On
- Repair Needed



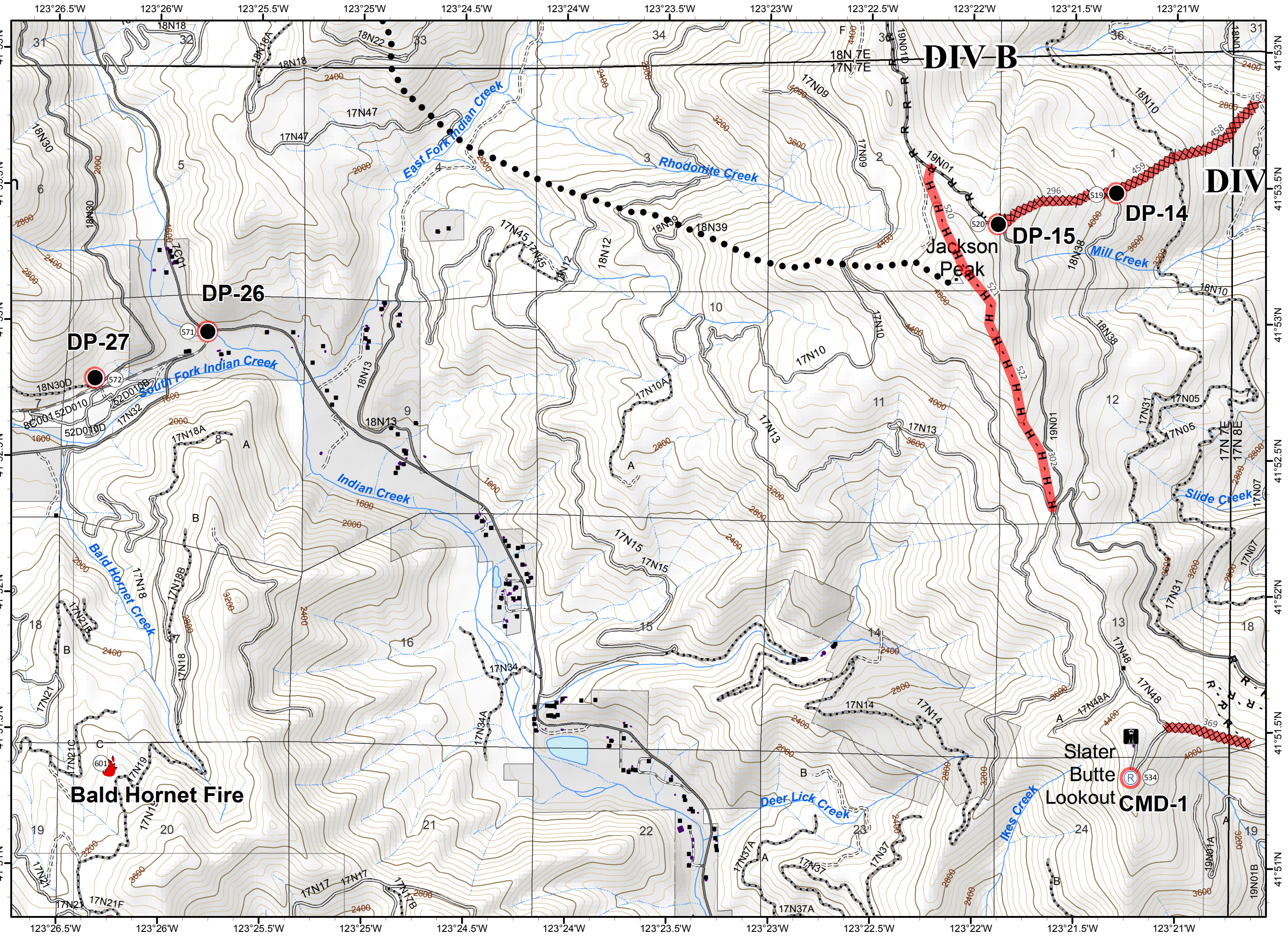
0 0.2 0.4 Miles
NAD 1983 UTM zone 10N



- () Division
- ▭ Ranger District Boundary
- ▭ Ownership Private
- Drop Point
- Repair Needed
- 🔥 Fire Location
- 🔴 Repair Needed
- Ⓜ Repeater
- Planned
- Secondary Line
- ▨ Completed Dozer Line
- H - Hand Line
- R - Road as Completed Line



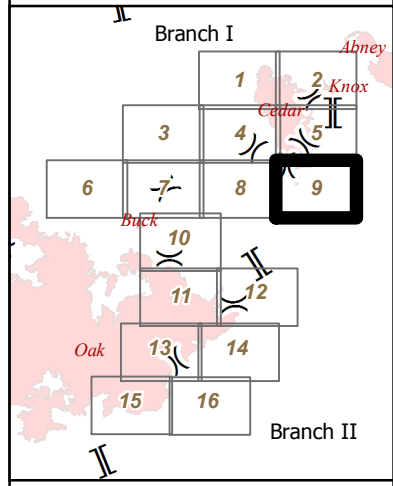
NAD 1983 UTM zone 10N



ECLIPSE COMPLEX
 CA-KNF-006098
 SEPTEMBER 18 2017
 IAP MAP
 BRANCH I & II

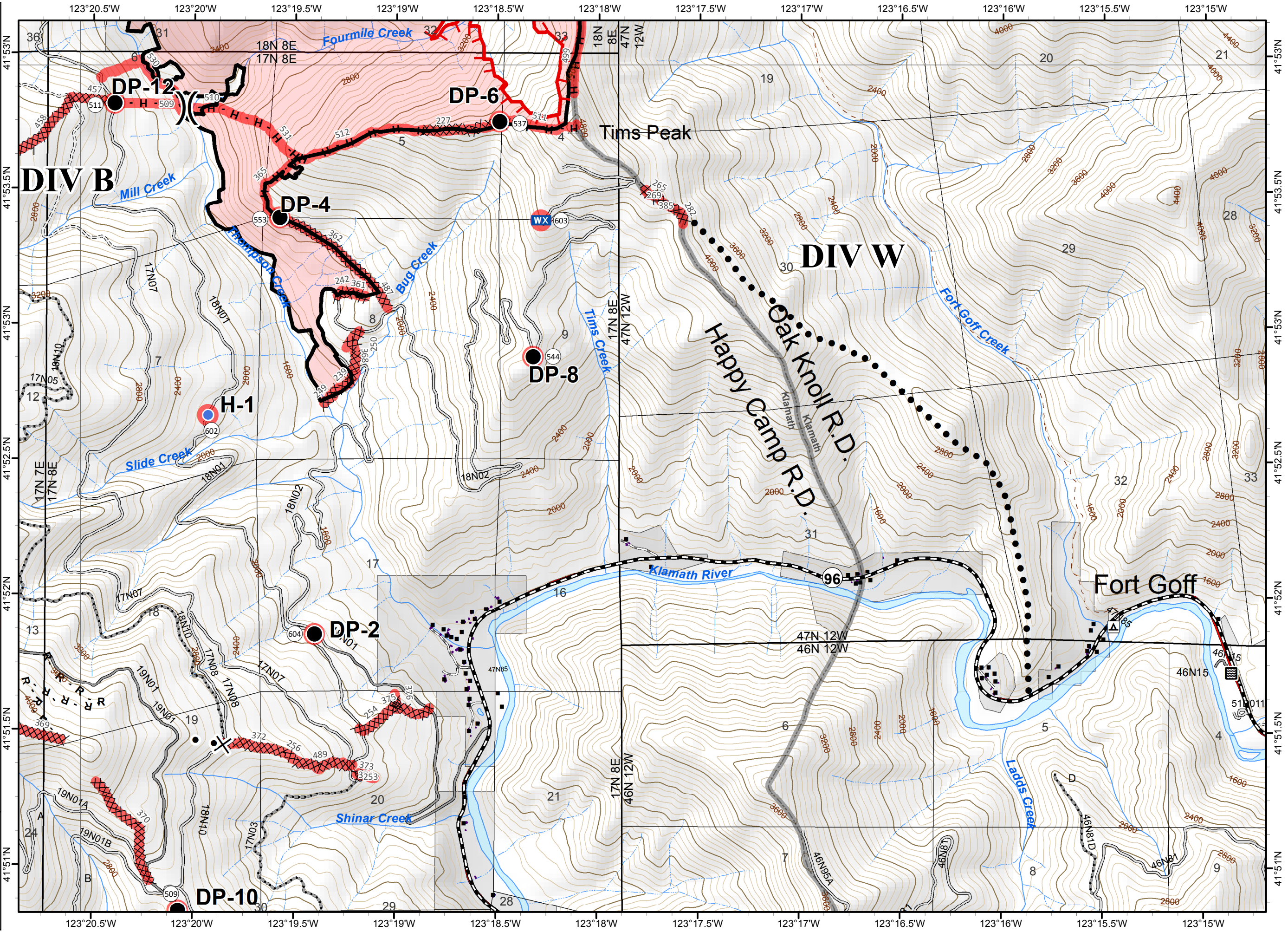
Page 9 of 16

- Division
- Branch
- Drop Point
- Helispot
- Mobile Weather Unit
- Uncontrolled Fire Edge
- Planned Secondary Line
- Completed Dozer Line
- Completed Line
- Hand Line
- Road as Completed Line
- Proposed Dozer Line
- Ranger District Boundary
- Fire Perimeter
- Ownership Private
- Repair Needed
- Repair Needed

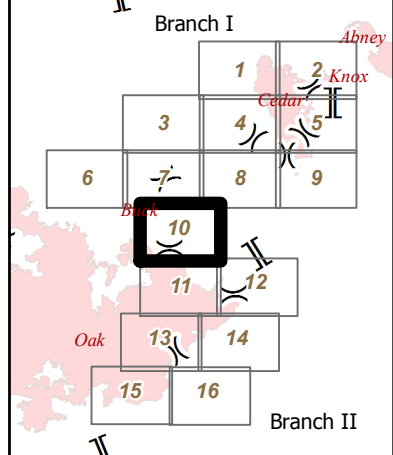


0 0.2 0.4 Miles

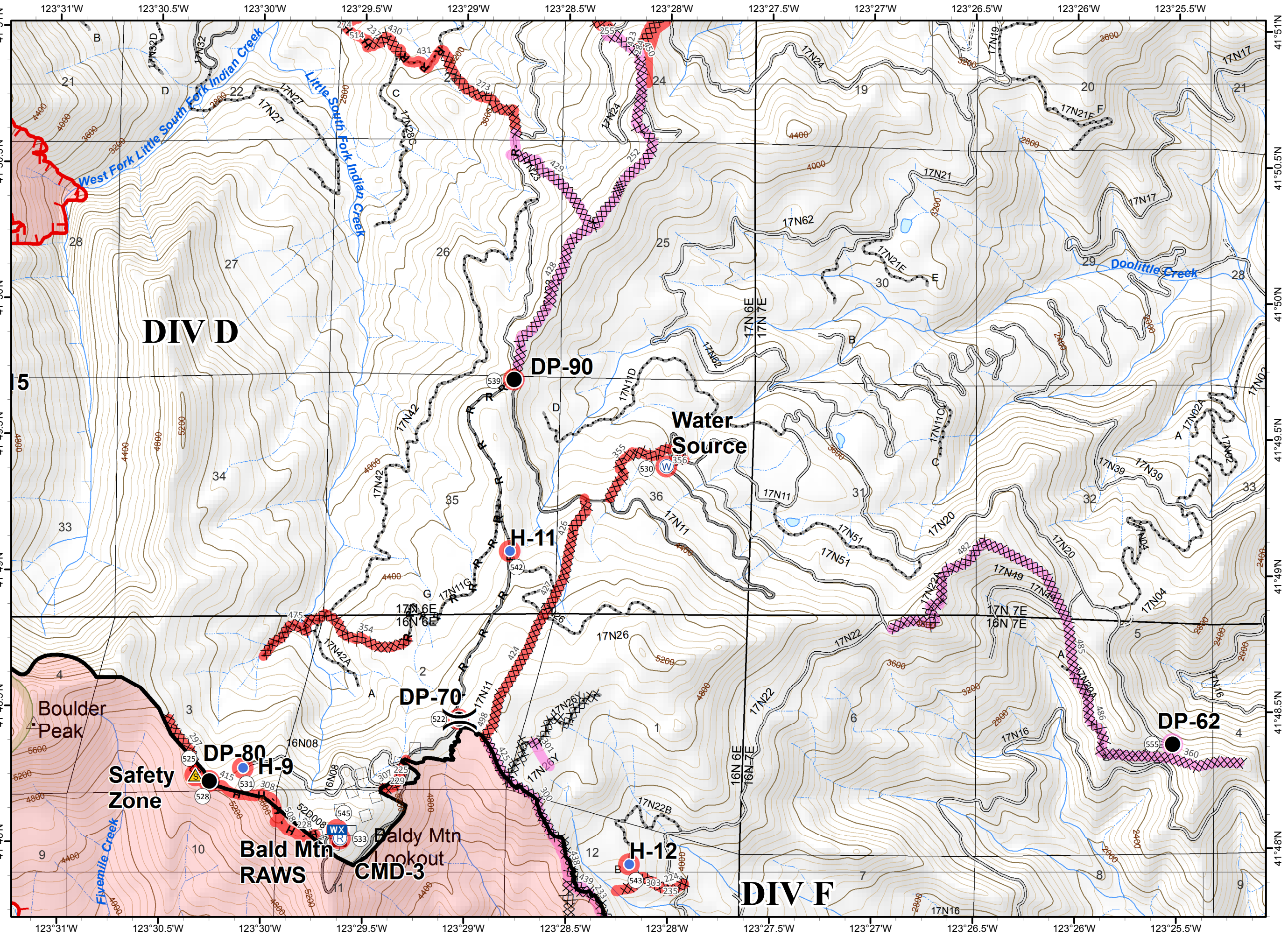
NAD 1983 UTM zone 10N



- () Division
- [] Branch
- Drop Point
- Helispot
- WX Mobile Weather Unit
- Ⓡ Repeater
- ⚠ Safety Zone
- Ⓜ Water Source
- Uncontrolled Fire Edge
- ◇ Aerial Retardant Drop
- ⊗ Completed Dozer Line
- Completed Line
- H - Hand Line
- R - Completed Line
- Planned Fire Line
- ▭ Ranger District Boundary
- ▭ Fire Perimeter
- ▭ Wilderness
- Ready to be Worked On
- Repair Needed
- ▭ Ready to be Worked On
- ▭ Repair Needed



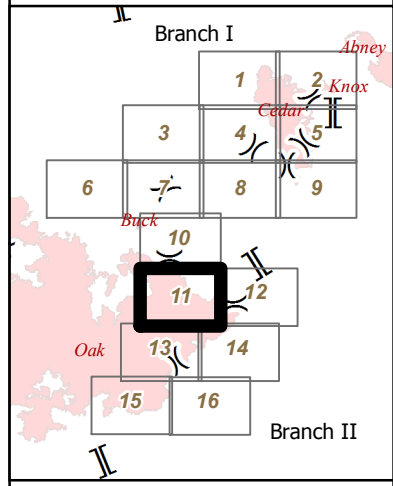
NAD 1983 UTM zone 10N



ECLIPSE COMPLEX
 CA-KNF-006098
 SEPTEMBER 18 2017
 IAP MAP
 BRANCH I & II

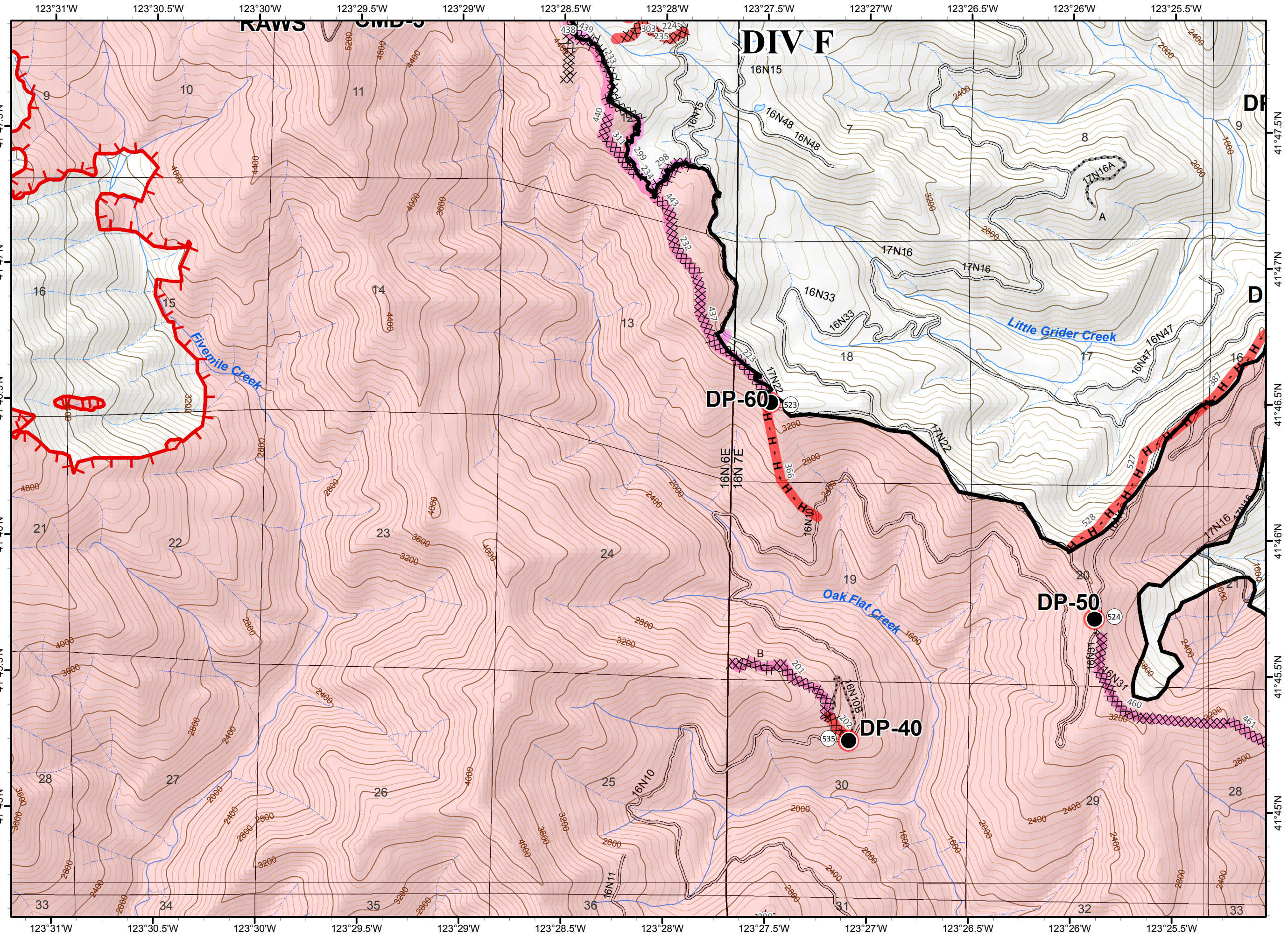
Page 11 of 16

- () Division
- ▭ Ranger District Boundary
- ▭ Branch
- Drop Point
- Uncontrolled Fire Edge
- ▨ Completed Dozer Line
- Completed Line
- H - Hand Line
- ▭ Fire Perimeter
- Repair Needed
- ▨ Ready to be Worked On
- ▨ Repair Needed

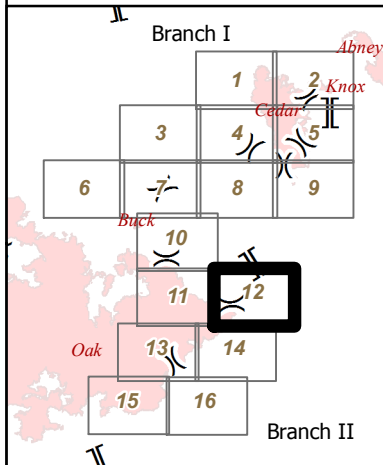


0 0.2 0.4 Miles

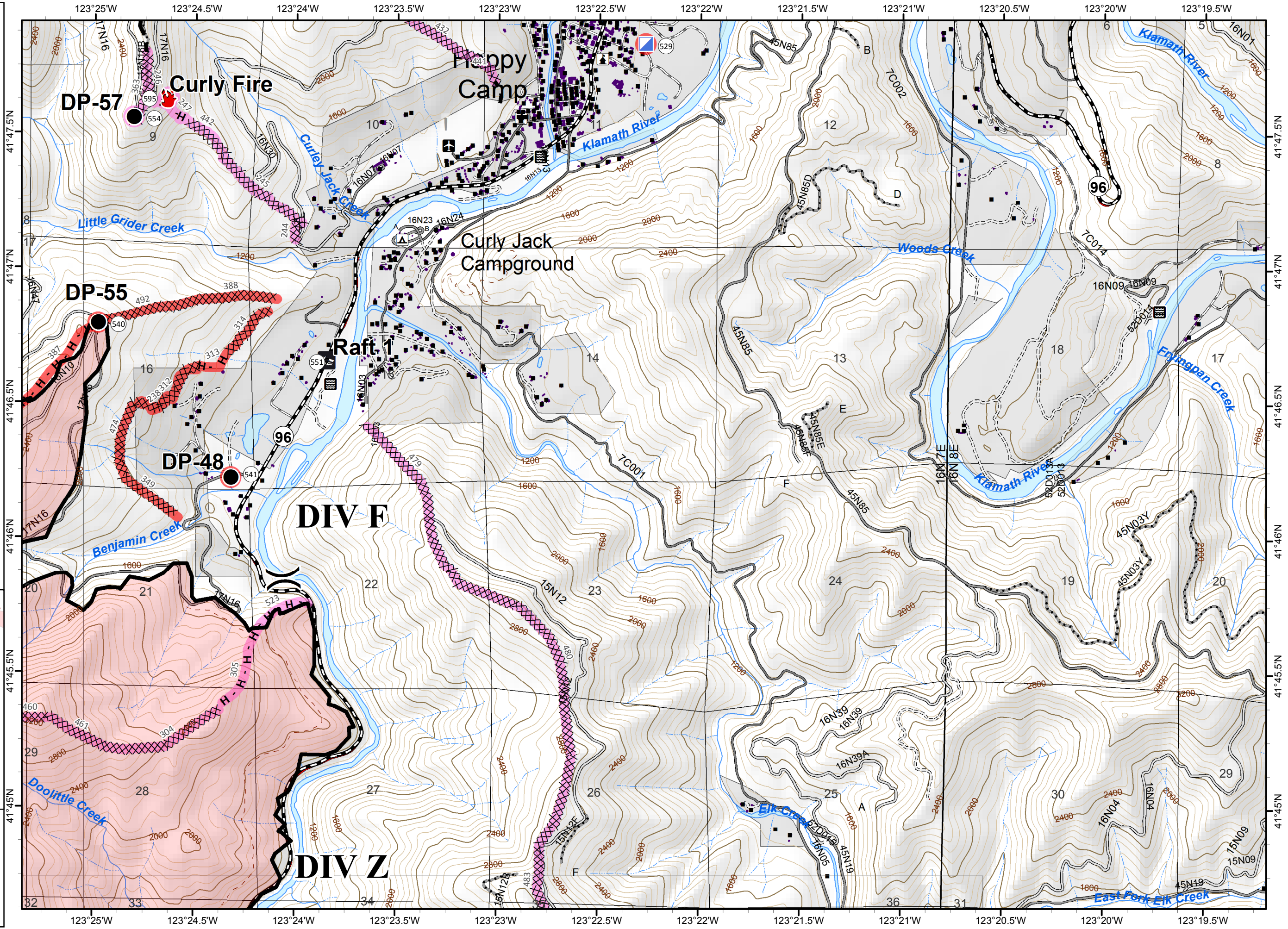
NAD 1983 UTM zone 10N



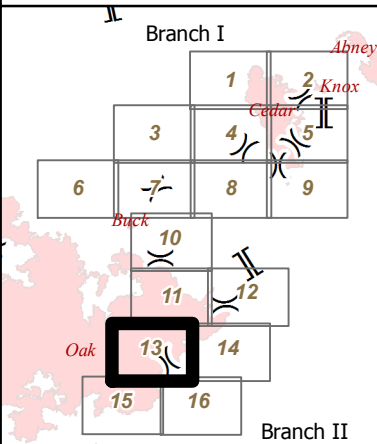
- Division
- Branch
- Boat Ramp
- Drop Point
- Fire Location
- Incident Command Post
- Completed Dozer Line
- Completed Line
- Hand Line
- Planned Fire Line
- Ranger District Boundary
- Fire Perimeter
- Ownership Private
- Ready to be Worked On
- Repair Needed



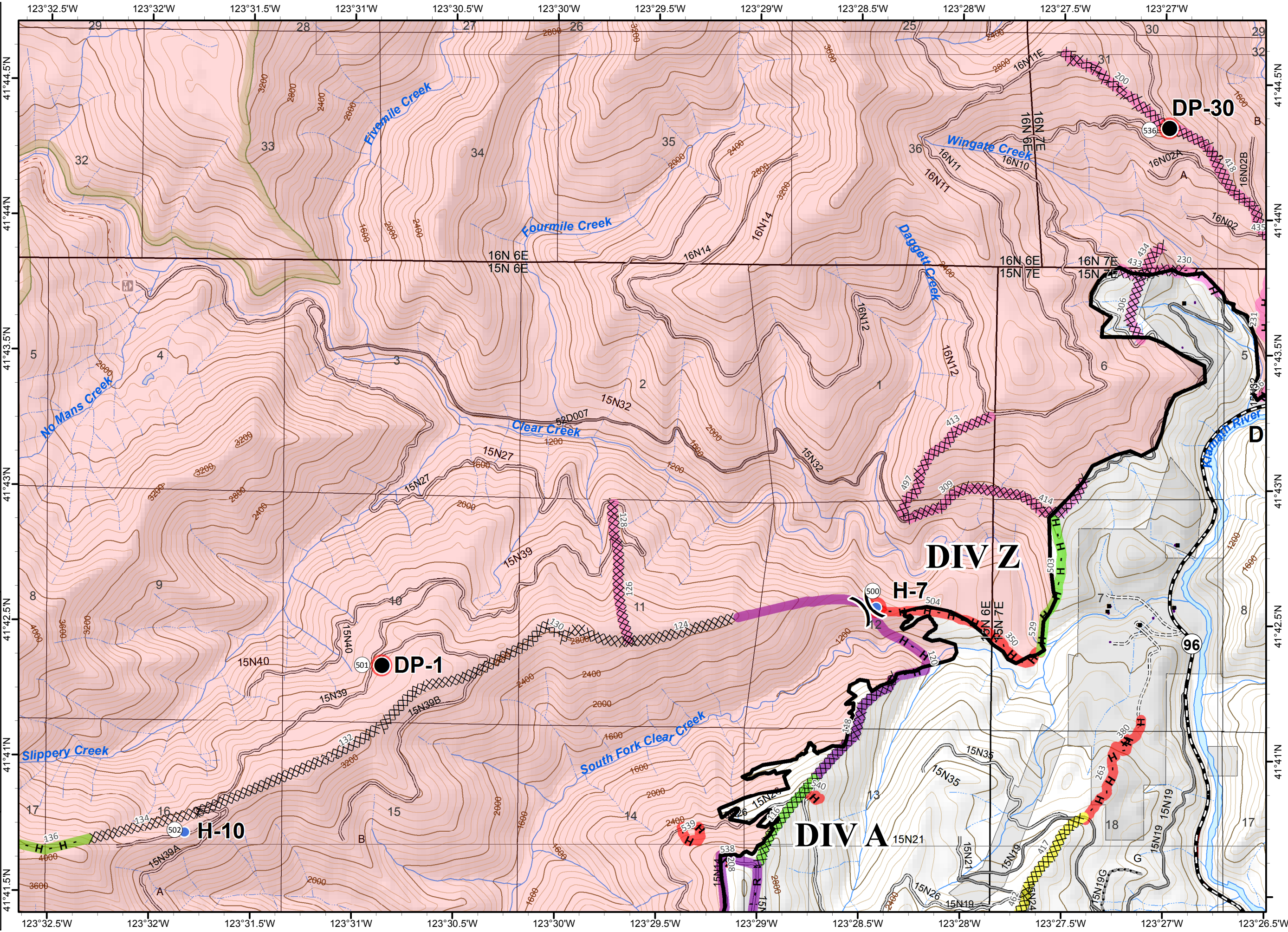
NAD 1983 UTM zone 10N



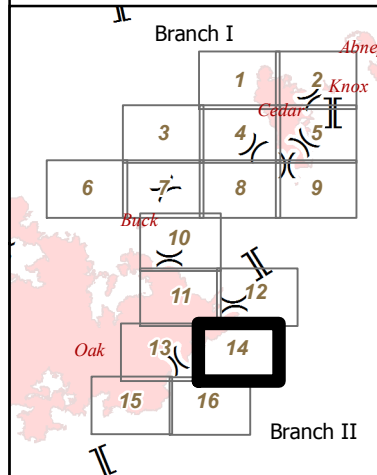
- () Division
- [] Branch
- Drop Point
- Helispot
- XXXX Completed Dozer Line
- Completed Line
- H - Hand Line
- R - Road as Completed Line
- ▭ Ranger District Boundary
- ▭ Fire Perimeter
- ▭ Wilderness
- ▭ Ownership Private
- Repair Needed
- ▭ Completed - Inspected
- ▭ In Progress
- ▭ Ready to be Worked On
- ▭ Repair Needed
- ▭ Unknown



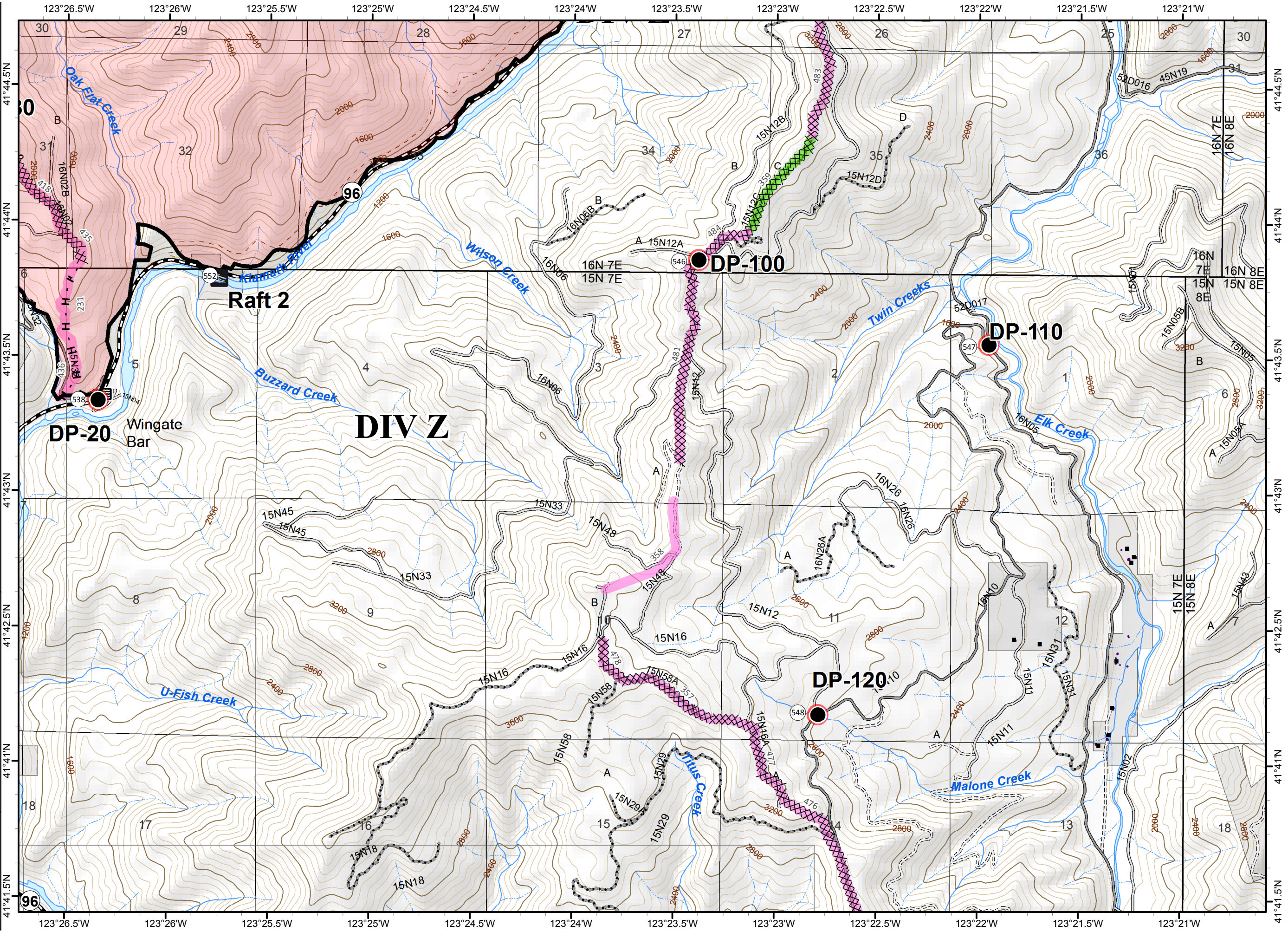
NAD 1983 UTM zone 10N



- Division
- Branch
- Boat Ramp
- Drop Point
- Completed Dozer Line
- Completed Line
- Hand Line
- Ranger District Boundary
- Fire Perimeter
- Ownership Private
- Repair Needed
- Completed - Inspected
- Ready to be Worked On



NAD 1983 UTM zone 10N

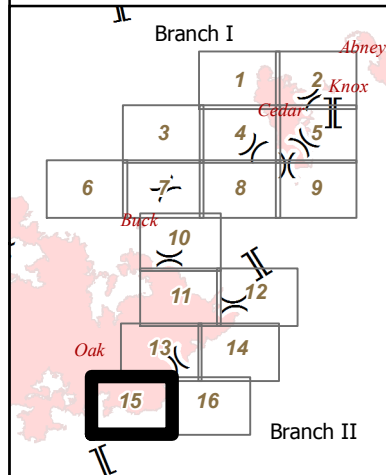


ECLIPSE COMPLEX
 CA-KNF-006098
 SEPTEMBER 18 2017

IAP MAP
 BRANCH I & II

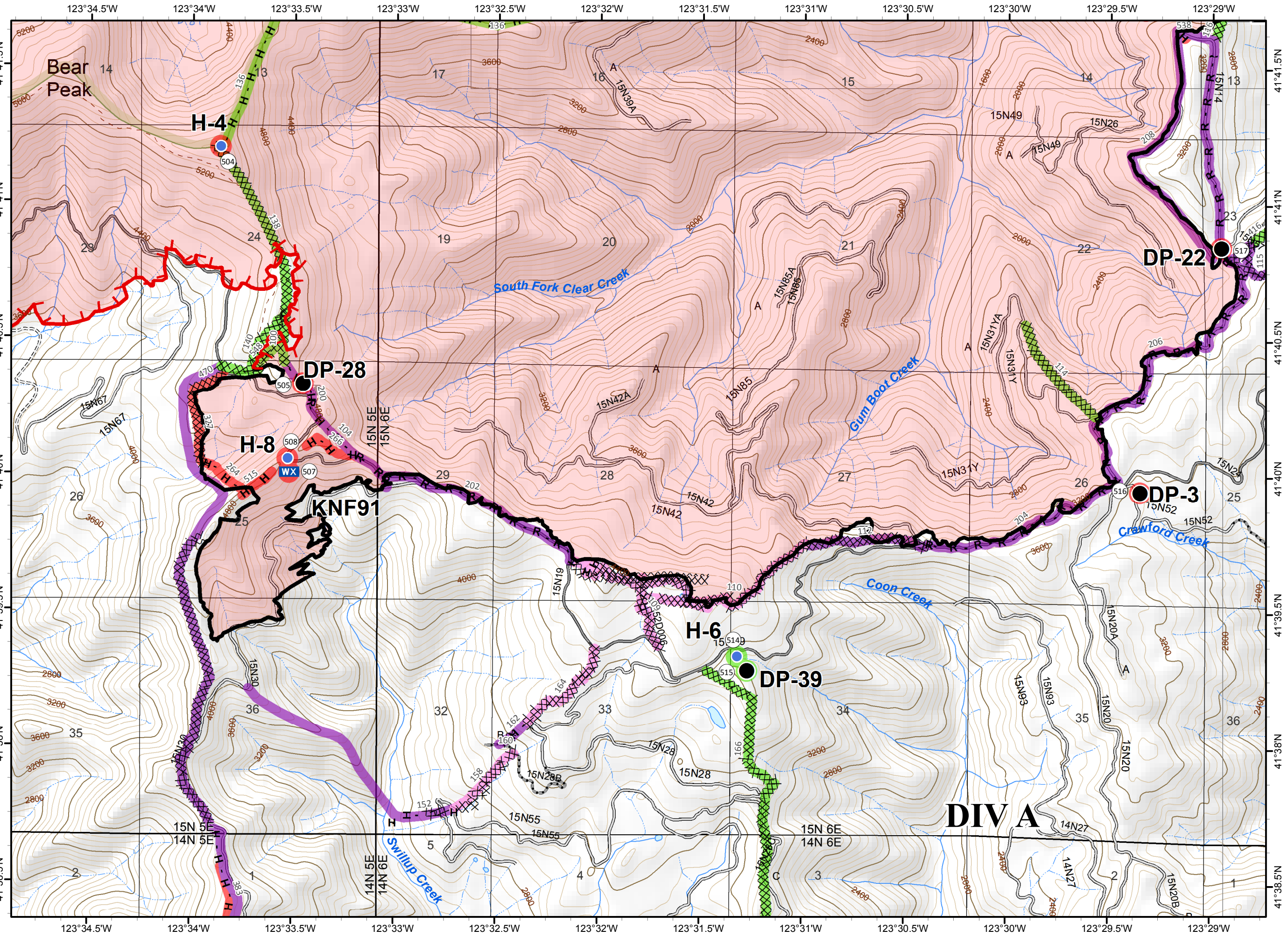
Page 15 of 16

- () Division
- ▭ Ranger District Boundary
- ▭ Branch
- Drop Point
- Helispot
- WX Mobile Weather Unit
- ┌─┐ Uncontrolled Fire Edge
- ▨ Completed Dozer Line
- ▬ Completed Line
- H - Hand Line
- R - Completed Line
- ▭ Fire Perimeter
- ▭ Wilderness
- Completed - Inspected
- Repair Needed
- ▭ Completed - Inspected
- ▭ Ready to be Worked On
- ▭ Repair Needed
- ▭ Unknown



0 0.2 0.4 Miles

NAD 1983 UTM zone 10N



- () Division
- ▭ Ranger District Boundary
- ▭ Branch
- Drop Point
- ▨ Completed Dozer Line
- ▬ Completed Line
- R - Completed Line
- ▭ Fire Perimeter
- ▭ Ownership Private
- Repair Needed
- ▨ Completed - Inspected
- ▨ In Progress
- ▨ Unknown

