

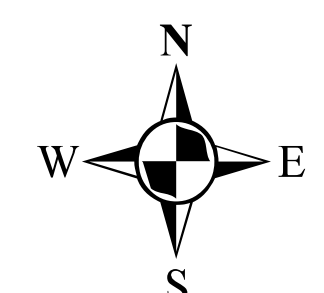
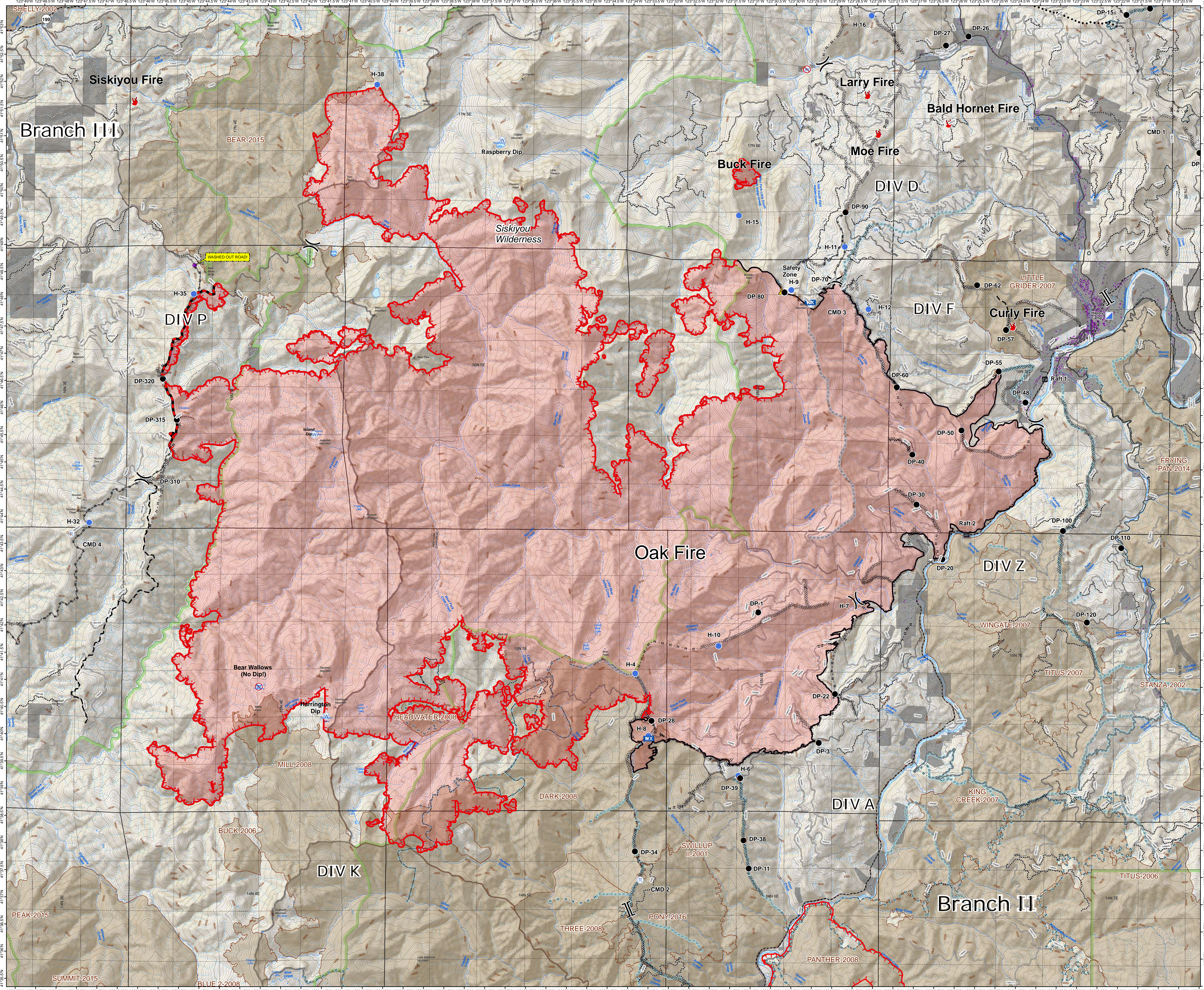


ECLIPSE COMPLEX
CA-KNF 006098

SEPTEMBER 18 2017
OPERATIONS
DAY SHIFT

BRANCH II

- () Division
- [] Branch
- Incident Command Post
- ⊙ Camp
- Drop Point
- 🔥 Fire Location
- ⊕ Helibase
- ⊙ Helispot
- 🔍 Lookout
- 🚚 Mobile Weather Unit
- 📡 Repeater
- ⚠ Safety Zone
- 🌊 Water Source
- 🚫 Restricted Water Source
- 🚣 Raft Landing
- 🔴 Uncontrolled Fire Edge
- ⊗ Completed Dozer Line
- Completed Line
- Hand Line
- Road as Completed Line
- ◇◇◇ Aerial Retardant Drop
- Planned Fire Line
- ⋯ Planned Secondary Line
- ⊗ Proposed Dozer Line
- ⊗ Ridge / Geographic Feature
- Containment Line
- PerimeterSector
- FirePolygon
- 🌊 RoadWashout
- USFS_RoadCoreSelect
- Trails
- ⊗ Past Ridge/Geographic Feature
- ⋯ Past Highlighted Man Made Feature
- Past Hand Line
- ⊗ Past Completed Dozer Line
- Past Completed Line
- 🏠 Ownership Private
- 🏠 Old Fire Scar
- 🌿 Wilderness
- 🏠 Ranger District Boundary



0 1 2 Miles

80 Foot Contours
1:38,000

Date: 9/17/2017
NAD 1983 UTM Zone 10N