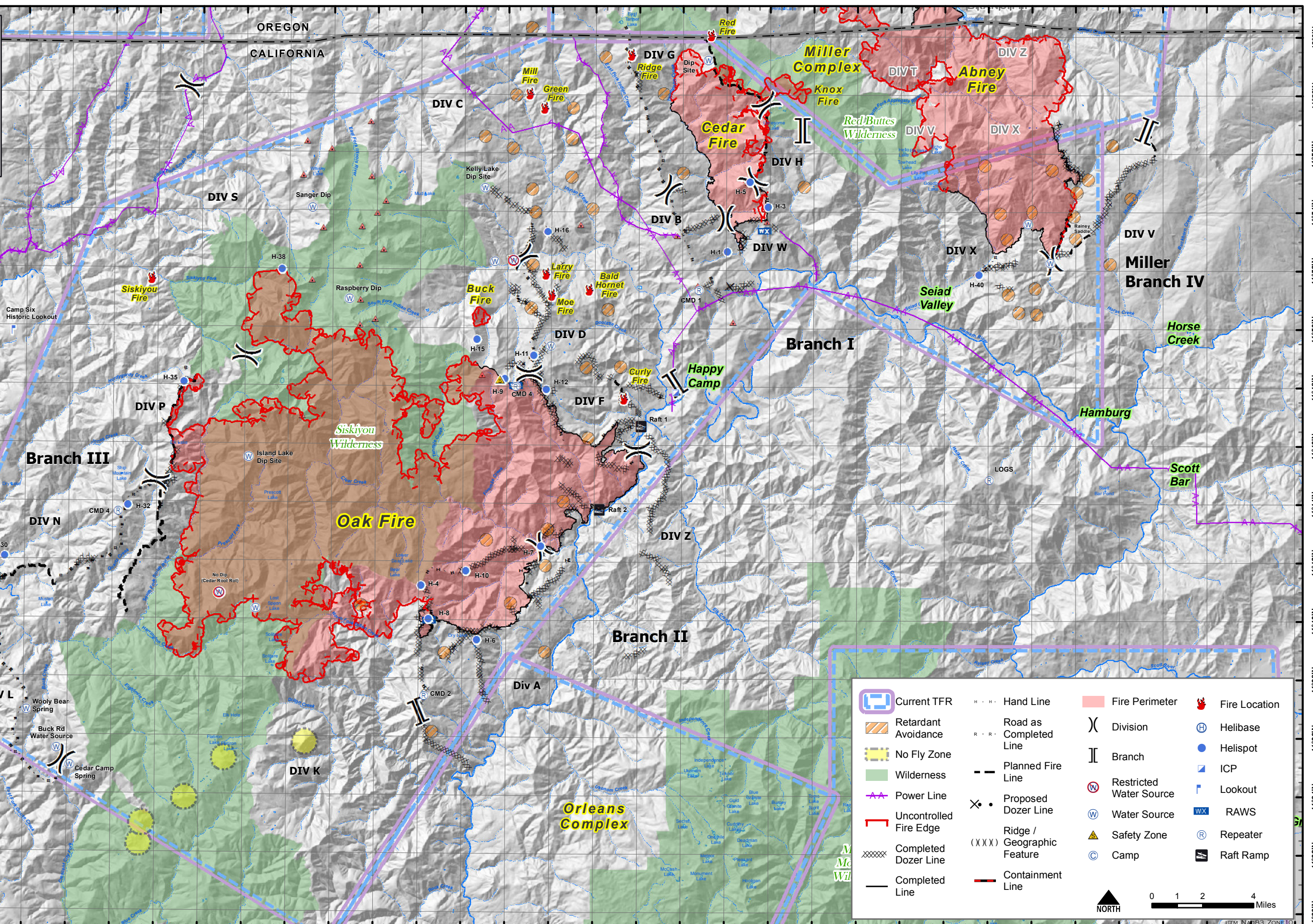


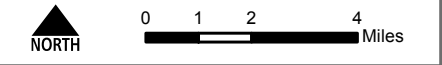
124°0'W 123°58'W 123°56'W 123°54'W 123°52'W 123°50'W 123°48'W 123°46'W 123°44'W 123°42'W 123°40'W 123°38'W 123°36'W 123°34'W 123°32'W 123°30'W 123°28'W 123°26'W 123°24'W 123°22'W 123°20'W 123°18'W 123°16'W 123°14'W 123°12'W 123°10'W 123°8'W 123°6'W 123°4'W 123°2'W 123°0'W 122°58'W 122°56'W 122°54'W

42°0'N 41°58'N 41°56'N 41°54'N 41°52'N 41°50'N 41°48'N 41°46'N 41°44'N 41°42'N 41°40'N 41°38'N 41°36'N 41°34'N 41°32'N 41°30'N

ECLIPSE COMPLEX
 CA-KNF-006098
AIR OPS MAP
 SEPTEMBER 18, 2017



Current TFR	Hand Line	Fire Perimeter	Fire Location
Retardant Avoidance	Road as Completed Line	Division	Helibase
No Fly Zone	Planned Fire Line	Branch	Helispot
Wilderness	Proposed Dozer Line	Restricted Water Source	ICP
Power Line	Ridge / Geographic Feature	Water Source	Lookout
Uncontrolled Fire Edge	Containment Line	Safety Zone	RAWS
Completed Dozer Line		Camp	Repeater
Completed Line			Raft Ramp



124°0'W 123°58'W 123°56'W 123°54'W 123°52'W 123°50'W 123°48'W 123°46'W 123°44'W 123°42'W 123°40'W 123°38'W 123°36'W 123°34'W 123°32'W 123°30'W 123°28'W 123°26'W 123°24'W 123°22'W 123°20'W 123°18'W 123°16'W 123°14'W 123°12'W 123°10'W 123°8'W 123°6'W 123°4'W 123°2'W 123°0'W 122°58'W 122°56'W 122°54'W

Point Name	Lat	Long
Bald Hornet Fire	41° 51.360' N	123° 26.230' W
Bald Mtn RAWs	41° 48.051' N	123° 29.620' W
Bear Wallows (No Dip!)	41° 40.907' N	123° 43.095' W
Branch III Fire Start	41° 51.665' N	123° 46.252' W
Buck Road Water Source	41° 35.5634' N	123° 50.4563' W
Camp Six Historic Lookout	41° 49.831' N	123° 52.615' W
Cedar Camp Spring	41° 34.9793' N	123° 49.8518' W
CMD-1	41° 51.334' N	123° 21.216' W
CMD-2	41° 37.405' N	123° 33.707' W
CMD-3	41° 48.017' N	123° 29.605' W
CMD-4	41° 43.687' N	123° 47.728' W
Curly Fire	41° 47.631' N	123° 24.631' W
Dip Site	41° 59.207' N	123° 20.857' W
DP-10	41° 50.833' N	123° 20.069' W
DP-100	41° 43.863' N	123° 23.382' W
DP-11	41° 37.626' N	123° 31.046' W
DP-110	41° 43.553' N	123° 21.949' W
DP-12	41° 53.814' N	123° 20.393' W
DP-120	41° 42.184' N	123° 22.785' W
DP-14	41° 53.482' N	123° 21.296' W
DP-15	41° 53.365' N	123° 21.878' W
DP-2	41° 51.855' N	123° 19.397' W
DP-20	41° 43.336' N	123° 26.342' W
DP-200	41° 34.882' N	123° 31.508' W
DP-22	41° 40.845' N	123° 28.955' W
DP-25	41° 55.002' N	123° 22.870' W
DP-26	41° 52.957' N	123° 25.762' W
DP-27	41° 52.787' N	123° 26.315' W
DP-28	41° 40.331' N	123° 33.451' W
DP-29	41° 54.787' N	123° 30.767' W
DP-3	41° 39.945' N	123° 29.347' W
DP-30	41° 44.339' N	123° 26.981' W
DP-300	41° 41.103' N	123° 50.632' W
DP-31	41° 55.975' N	123° 32.762' W

Point Name	Lat	Long
DP-310	41° 44.722' N	123° 45.978' W
DP-315	41° 45.805' N	123° 45.158' W
DP-320	41° 46.557' N	123° 45.512' W
DP-34	41° 37.928' N	123° 33.838' W
DP-350	41° 40.994' N	123° 55.001' W
DP-360	41° 35.171' N	123° 50.216' W
DP-38	41° 38.143' N	123° 31.179' W
DP-39	41° 39.285' N	123° 31.269' W
DP-4	41° 53.393' N	123° 19.575' W
DP-40	41° 45.258' N	123° 27.089' W
DP-401	41° 52.012' N	123° 8.363' W
DP-402	41° 54.043' N	123° 8.412' W
DP-403	41° 53.431' N	123° 6.484' W
DP-404	41° 52.375' N	123° 5.136' W
DP-405	41° 53.244' N	123° 3.356' W
DP-410	41° 50.523' N	123° 1.931' W
DP-48	41° 46.223' N	123° 24.318' W
DP-50	41° 45.710' N	123° 25.886' W
DP-55	41° 46.795' N	123° 24.977' W
DP-57	41° 47.557' N	123° 24.804' W
DP-6	41° 53.751' N	123° 18.489' W
DP-60	41° 46.499' N	123° 27.481' W
DP-62	41° 48.380' N	123° 25.521' W
DP-70	41° 48.459' N	123° 29.026' W
DP-8	41° 52.882' N	123° 18.320' W
DP-80	41° 48.228' N	123° 30.250' W
DP-90	41° 49.710' N	123° 28.763' W
Gasquet Camp	41° 50.777' N	123° 58.286' W
Green Fire	41° 57.573' N	123° 28.327' W
H-1	41° 52.663' N	123° 19.927' W
H-10	41° 41.718' N	123° 31.822' W
H-11	41° 49.078' N	123° 28.779' W
H-12	41° 47.929' N	123° 28.185' W

Point Name	Lat	Long
H-15	41° 49.640' N	123° 31.382' W
H-16	41° 53.330' N	123° 28.150' W
H-3	41° 54.190' N	123° 18.078' W
H-30	41° 42.127' N	123° 52.888' W
H-32	41° 43.903' N	123° 47.287' W
H-35	41° 48.126' N	123° 44.770' W
H-38	41° 52.000' N	123° 40.300' W
H-4	41° 41.202' N	123° 33.860' W
H-40	41° 51.888' N	123° 8.426' W
H-5	41° 55.049' N	123° 18.918' W
H-6	41° 39.337' N	123° 31.319' W
H-7	41° 42.563' N	123° 28.417' W
H-8	41° 40.056' N	123° 33.526' W
H-9	41° 48.276' N	123° 30.084' W
Harrington Dip	41° 40.378' N	123° 41.431' W
ICP	41° 47.834' N	123° 22.272' W
Island Dip	41° 45.557' N	123° 41.787' W
Kelly Lake Dip Site	41° 54.815' N	123° 31.047' W
KNF91	41° 40.005' N	123° 33.517' W
Larry Fire	41° 51.877' N	123° 28.232' W
Logs	41° 44.854' N	123° 7.946' W
Mill Fire	41° 58.070' N	123° 28.990' W
Moe Fire	41° 51.167' N	123° 27.962' W
Raft 1	41° 46.657' N	123° 23.847' W
Raft 2	41° 43.788' N	123° 25.747' W
Raspberry Dip	41° 50.998' N	123° 37.219' W
Ridge Fire	41° 59.410' N	123° 24.350' W
Safety Zone	41° 48.248' N	123° 30.317' W
Sanger Dip	41° 54.109' N	123° 38.958' W
Small Lake (Cable Hazard)	41° 52.334' N	123° 29.734' W
Ward Helibase	41° 50.867' N	123° 59.017' W
Water Source	41° 49.392' N	123° 28.012' W
Woolly Bear Spring	41° 36.8515' N	123° 51.8435' W