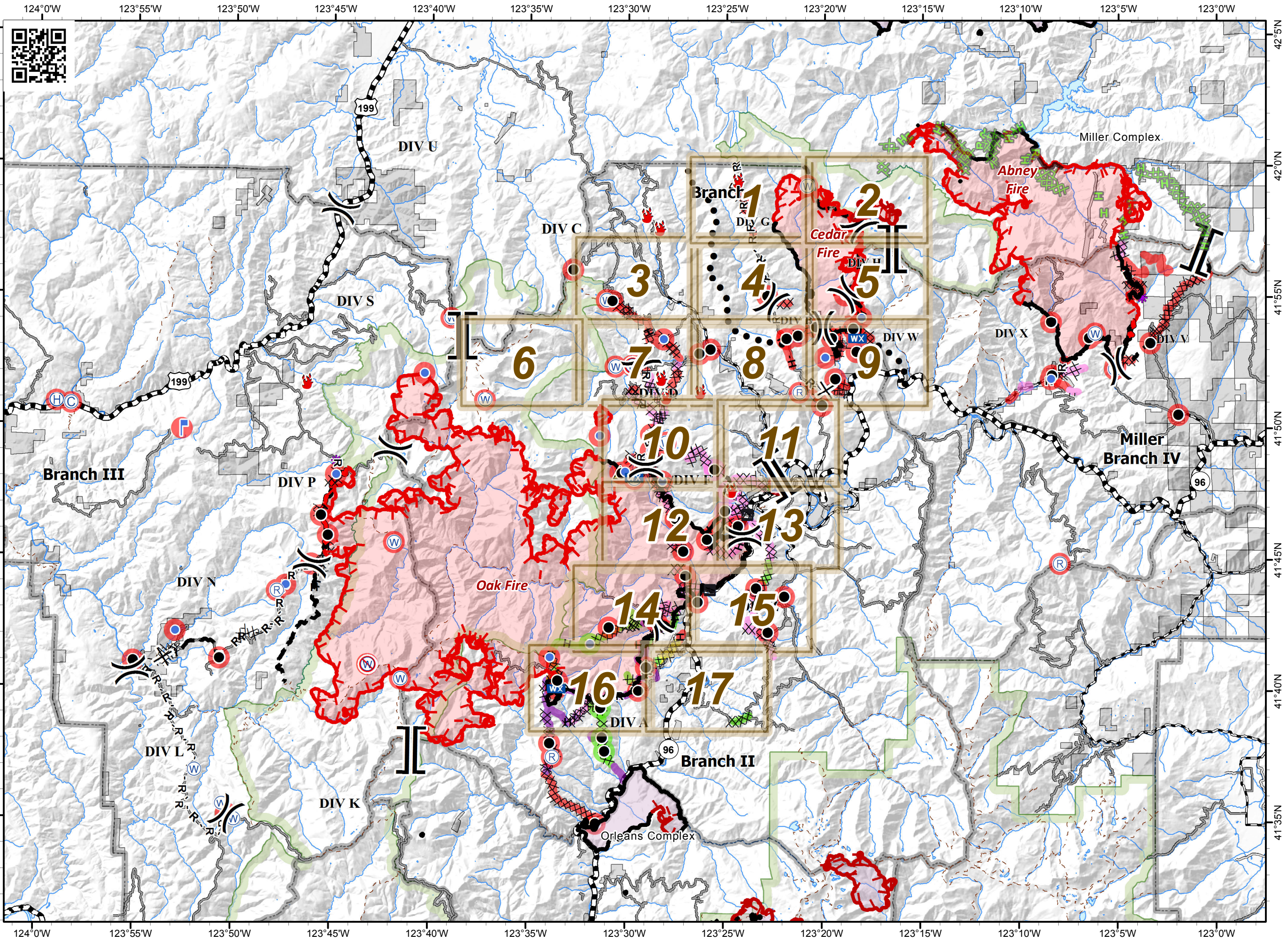


ECLIPSE COMPLEX
 CA-KNF-006098
 SEPTEMBER 19 2017

IAP MAP
 BRANCH I & II

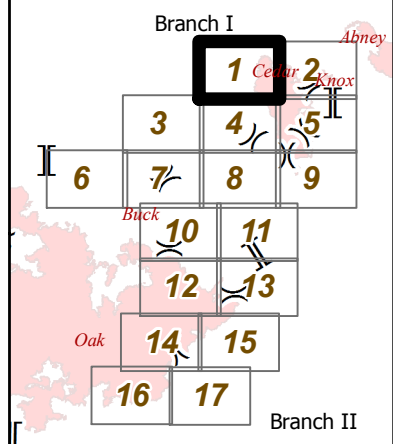
Index

- | | |
|--|--|
| | |
| | |
| | |
| | |
| | |
| | |
| | |
| | |
| | |
| | |
| | |
| | |
| | |
| | |
| | |
| | |
| | |
| | |
| | |
| | |

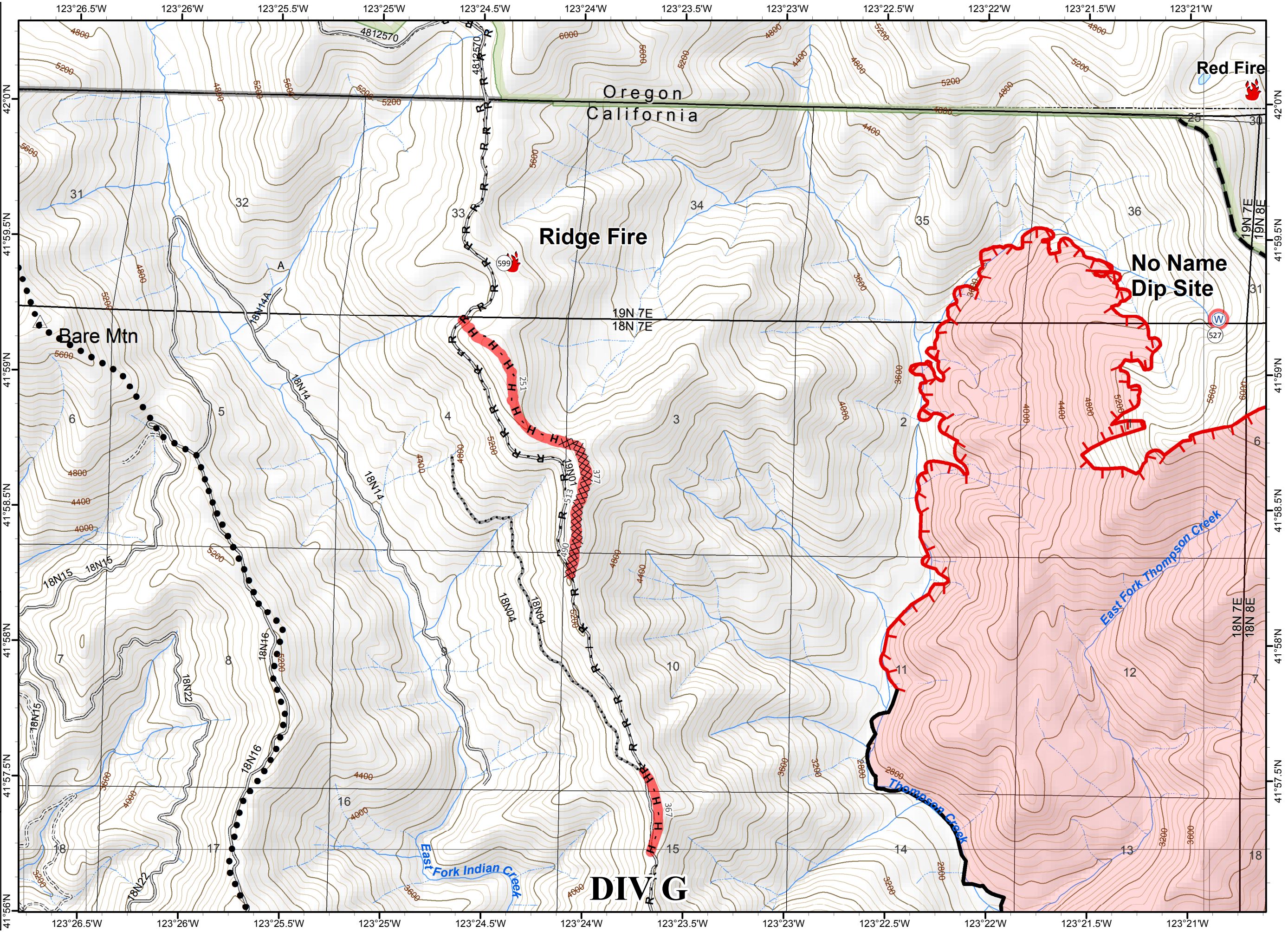


0 2 4 Miles
 NAD 1983 UTM zone 10N

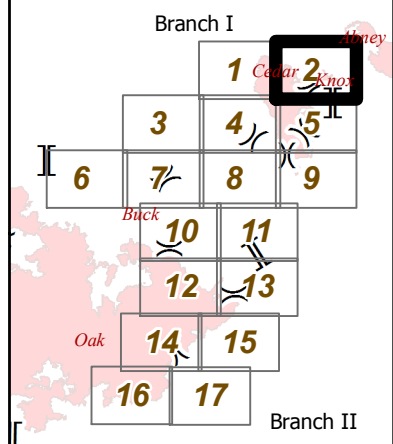
- () Division
- [] Branch
- 🔥 Fire Location
- 🌊 Water Source
- 🔴 Uncontrolled Fire Edge
- Planned Secondary Line
- ⊗ Completed Dozer Line
- Completed Line
- H - Hand Line
- R - Road as Completed Line
- Planned Fire Line
- ▭ Ranger District Boundary
- ▭ Fire Perimeter
- ▭ Wilderness
- Repair Needed
- ▭ Repair Needed



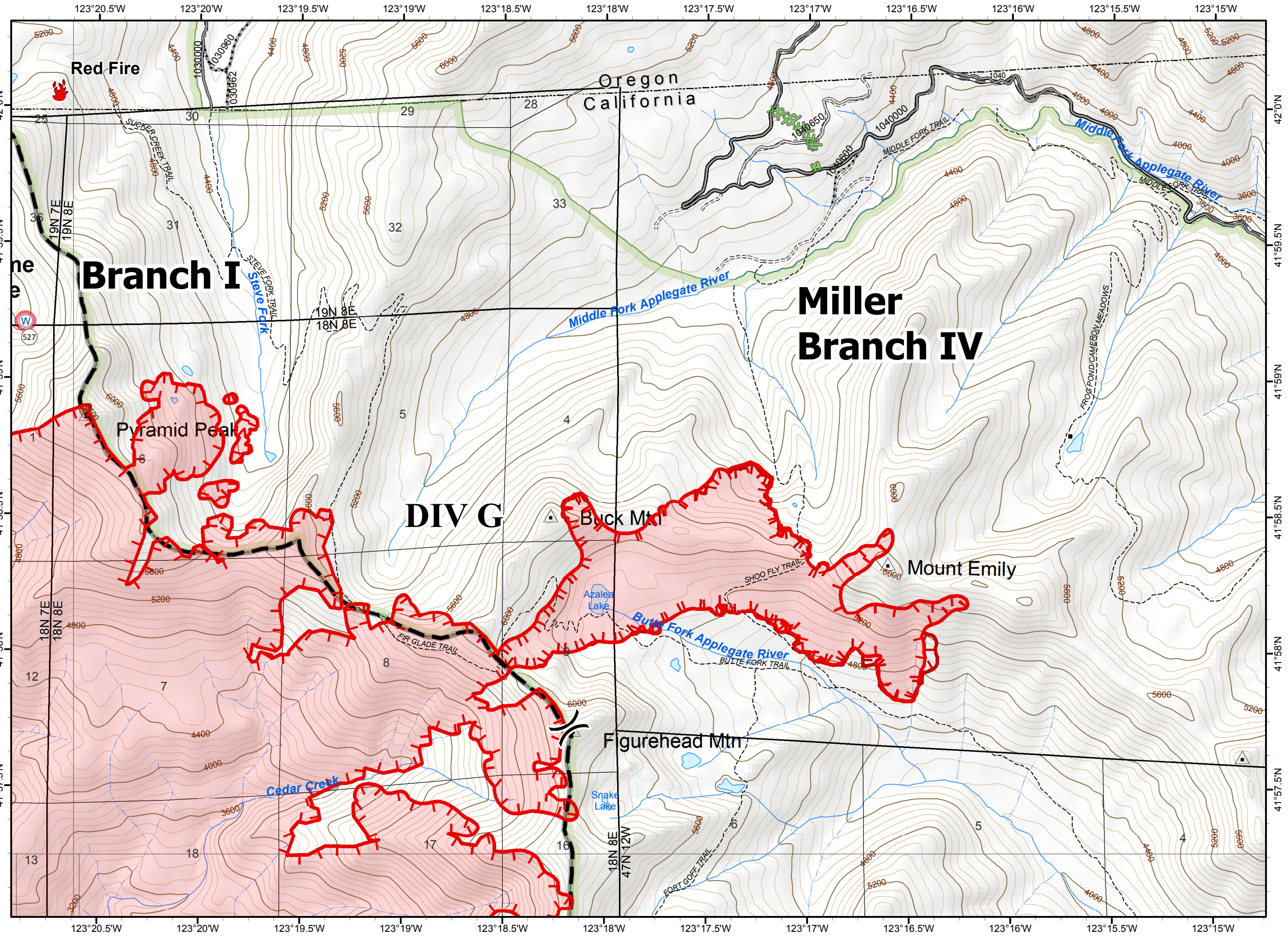
NAD 1983 UTM zone 10N



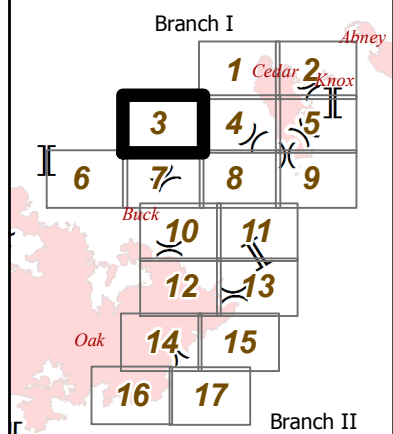
- Division
- Branch
- Miller Completed Dozer Line
- Miller Completed Hand Line
- Water Source
- Uncontrolled Fire Edge
- Planned Fire Line
- Ranger District Boundary
- Fire Perimeter
- Uncontrolled Fire Edge
- Wilderness
- Ownership Private
- Repair Needed



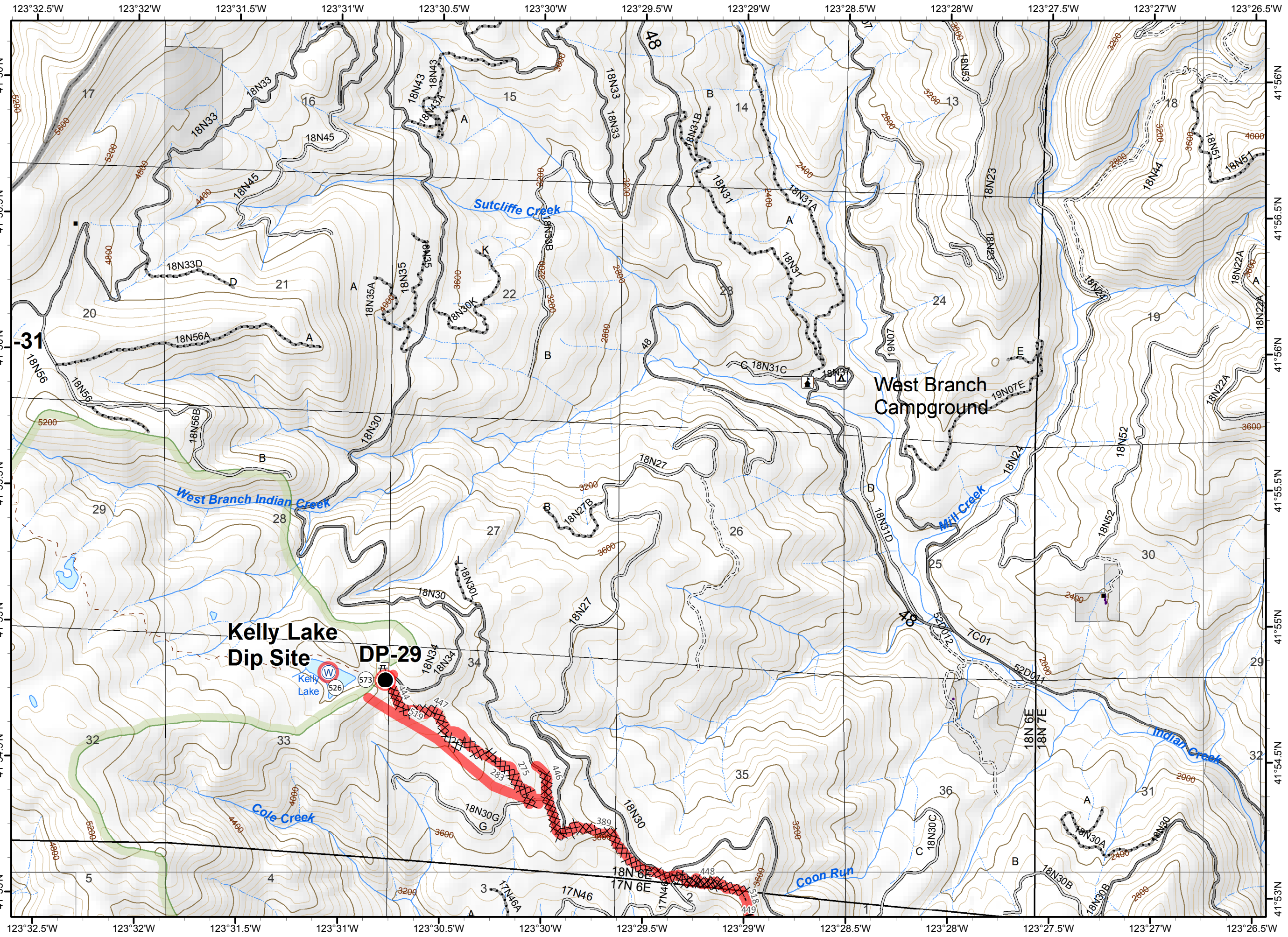
NAD 1983 UTM zone 10N



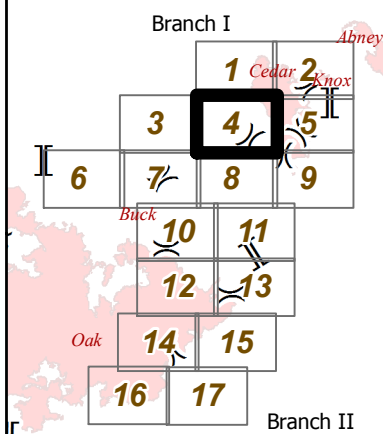
- Division
- Branch
- Drop Point
- Water Source
- Completed Dozer Line
- Hand Line
- Ranger District Boundary
- Wilderness
- Ownership Private
- Repair Needed
- Repair Needed



NAD 1983 UTM zone 10N

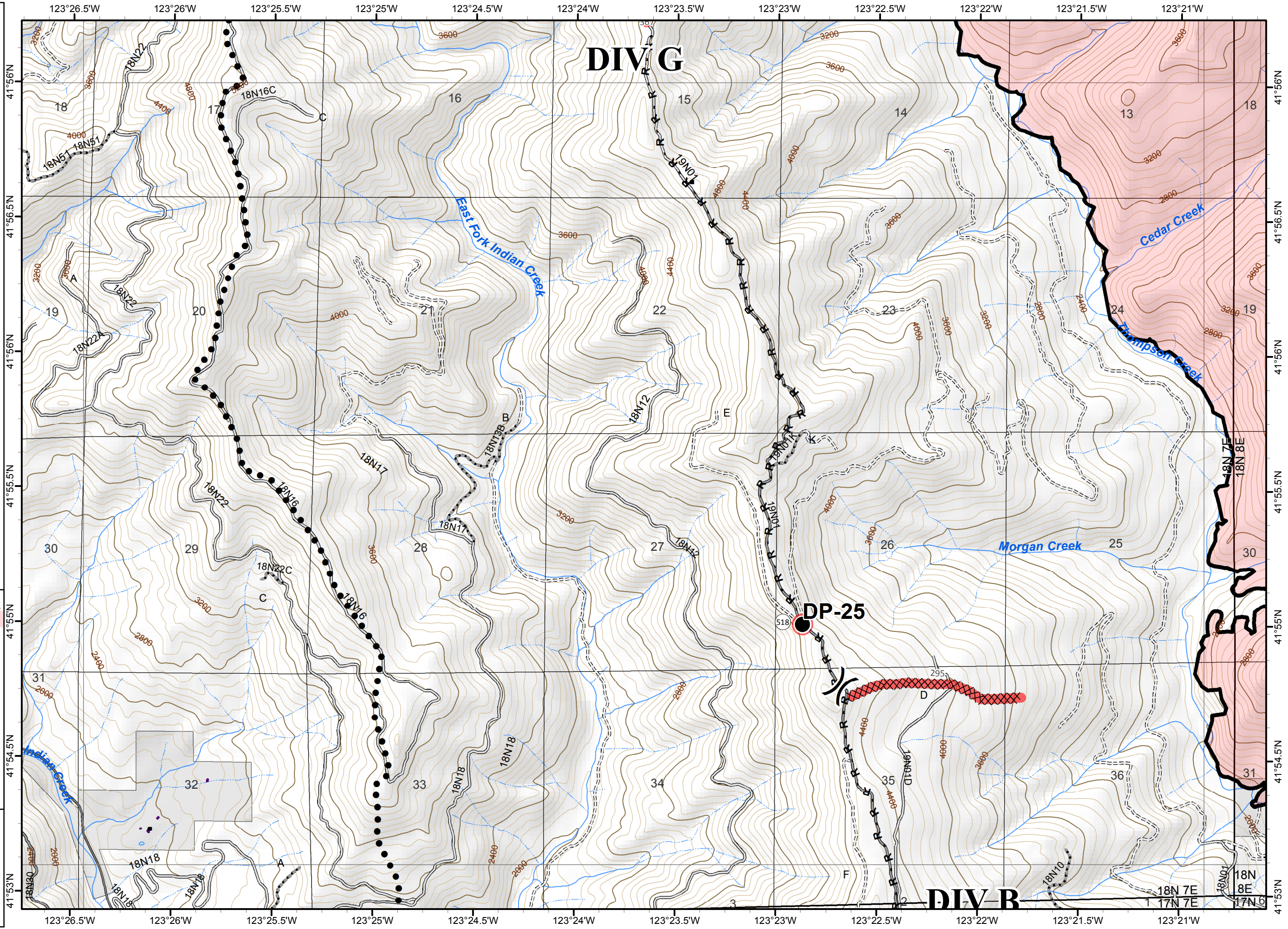


- () Division
- [] Branch
- Drop Point
- Planned Secondary Line
- XXXX Completed Dozer Line
- Completed Line
- H - Hand Line
- R - Road as Completed Line
- ▭ Ranger District Boundary
- ▭ Fire Perimeter
- ▭ Ownership Private
- Repair Needed
- ▭ Repair Needed

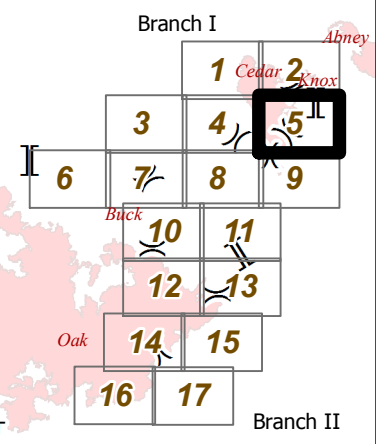
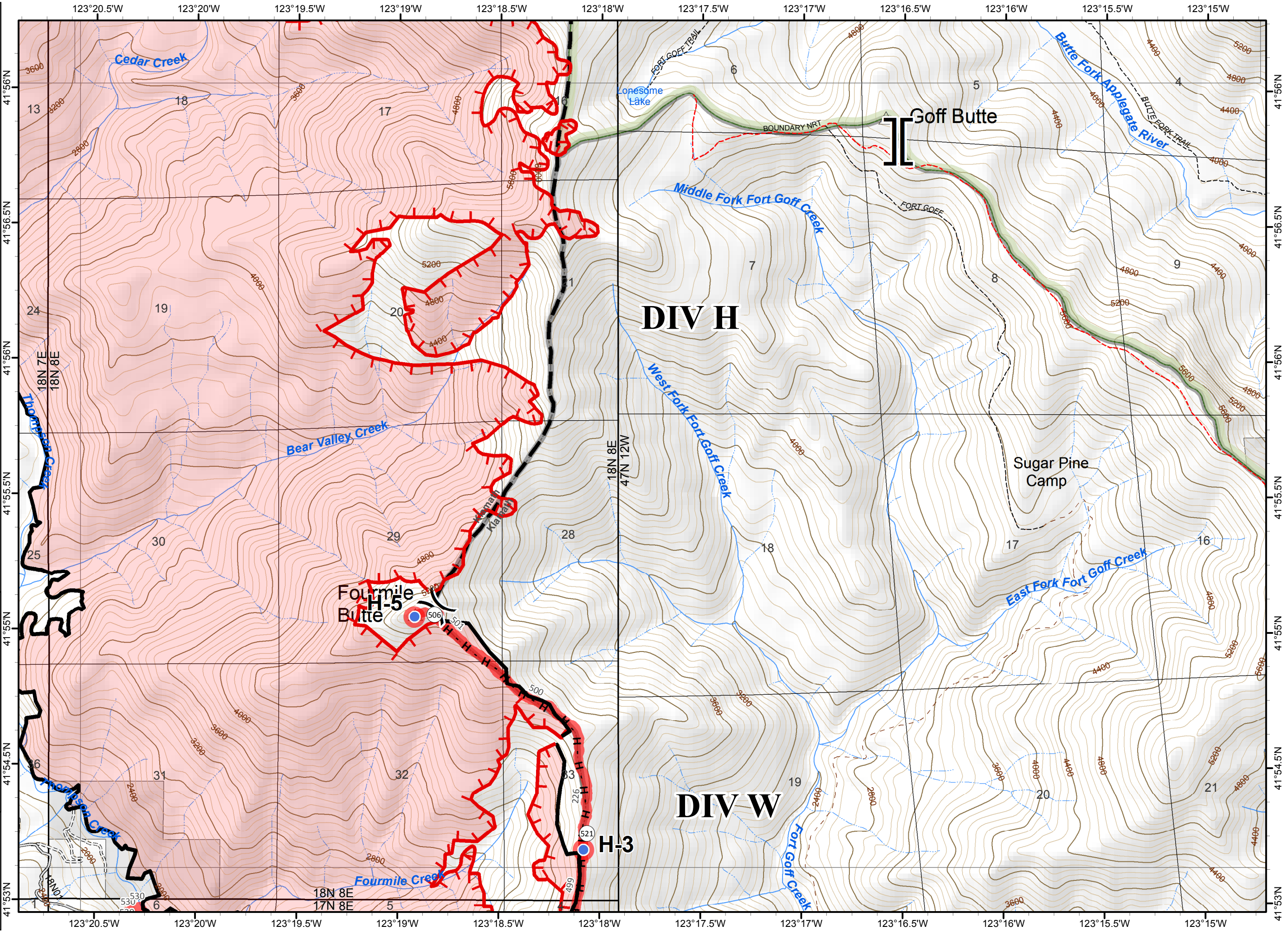


0 0.2 0.4 Miles

NAD 1983 UTM zone 10N

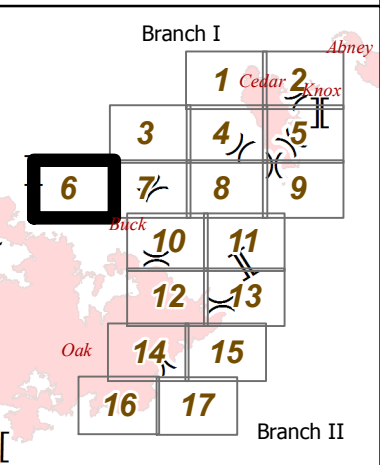
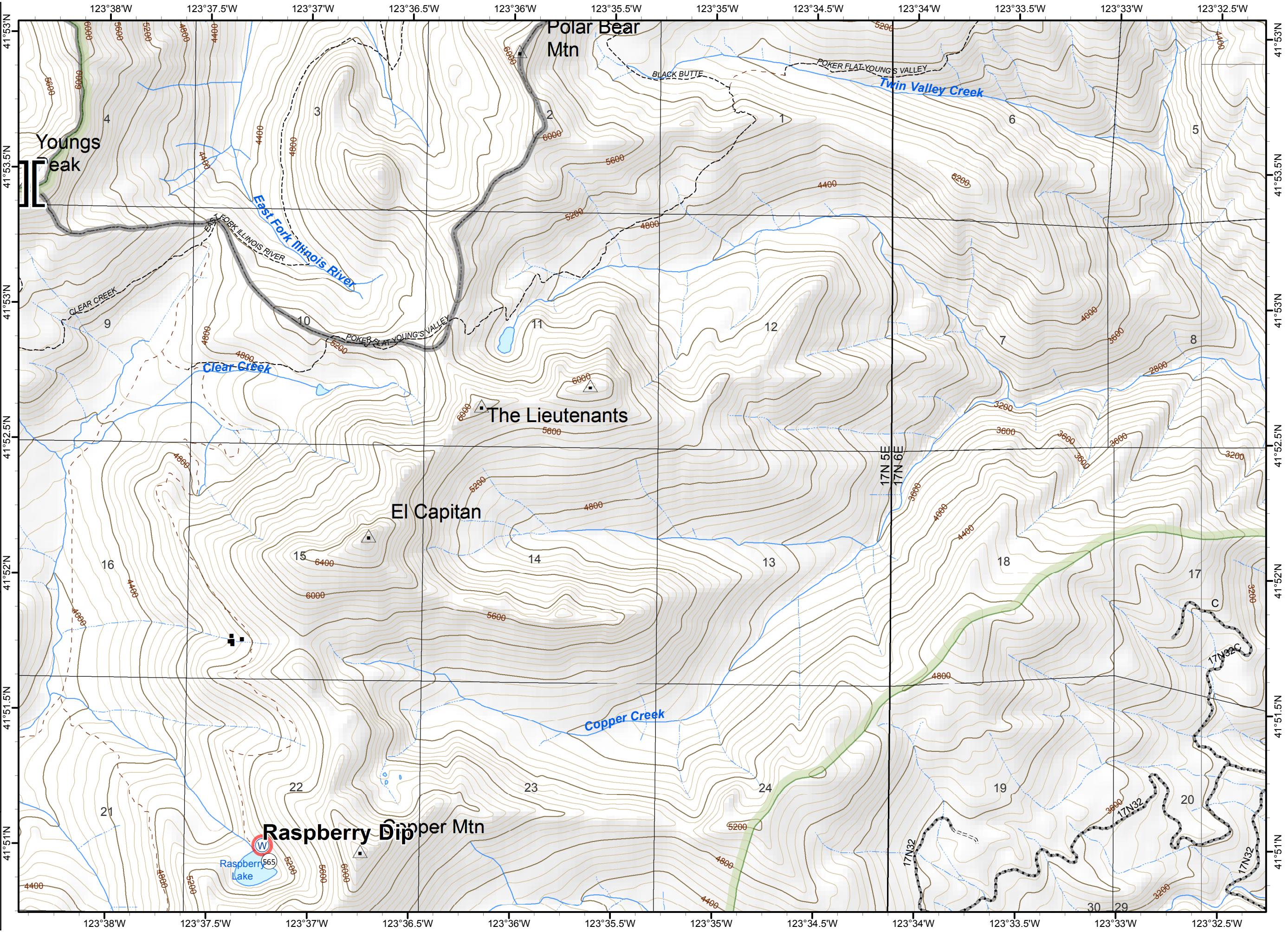


- Division
- Branch
- Helispot
- Uncontrolled Fire Edge
- Completed Line
- Hand Line
- Planned Fire Line
- Ranger District Boundary
- Fire Perimeter
- Wilderness
- Ownership Private
- Repair Needed

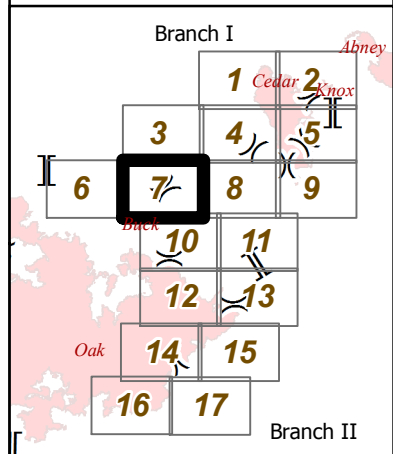


This block contains the official logos for the US Forest Service (Department of Agriculture) and the Southern California Fire Department. Below the logos is a north arrow and a scale bar showing 0, 0.2, and 0.4 miles. The text 'NAD 1983 UTM zone 10N' is printed at the bottom.

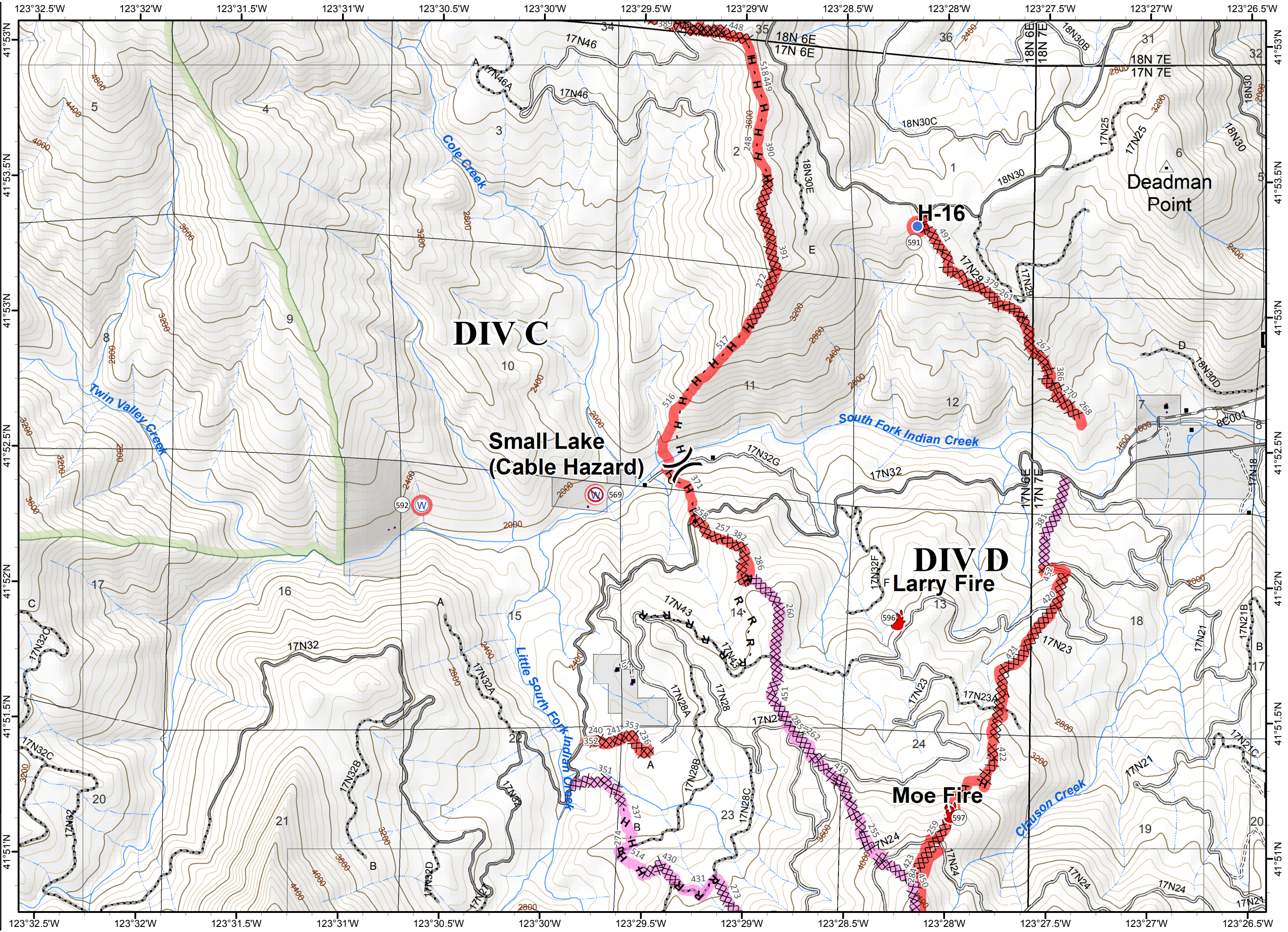
- () Division
- ⌋ Branch
- ⊕ Water Source
- ▭ Ranger District Boundary
- ▭ Wilderness
- ▭ Ownership Private
- Repair Needed



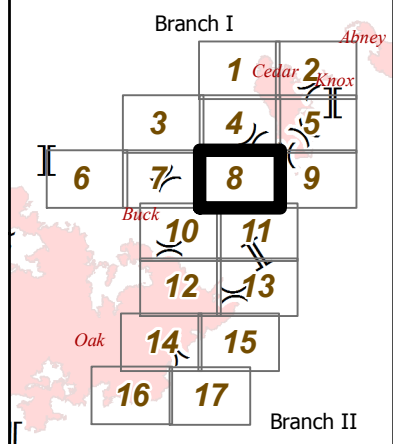
- Division
- Branch
- Fire Location
- Helispot
- Water Source
- Restricted Water Source
- Completed Dozer Line
- H - Hand Line
- R - Completed Line
- Planned Fire Line
- Ranger District Boundary
- Wilderness
- Ownership Private
- Repair Needed
- Ready to be Worked On
- Repair Needed



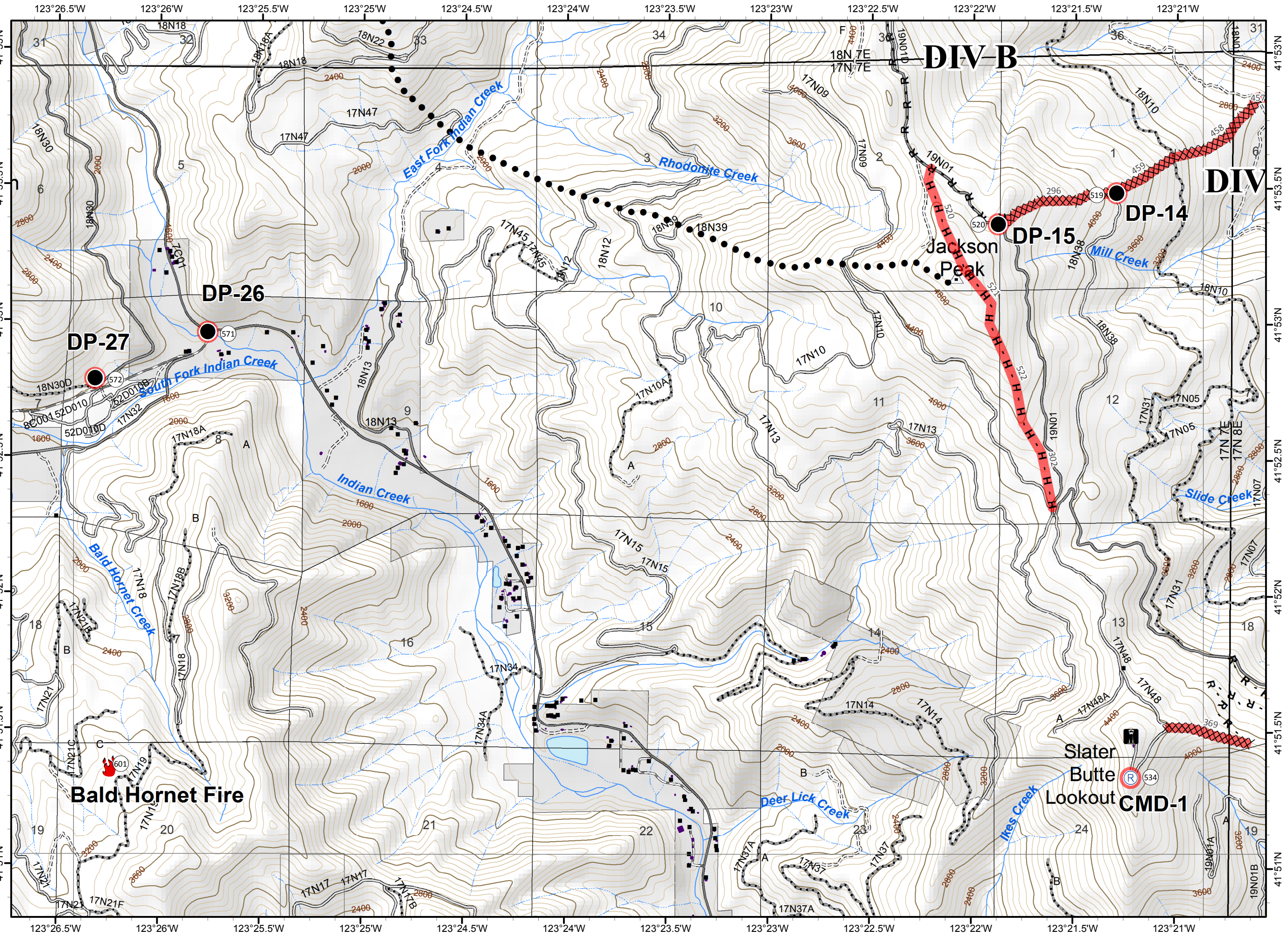
NAD 1983 UTM zone 10N



- () Division
- ⌋ Branch
- Drop Point
- 🔥 Fire Location
- Ⓜ Repeater
- Planned
- Secondary Line
- XXXX Completed Dozer Line
- H - Hand Line
- R - Road as Completed Line
- ▭ Ranger District Boundary
- ▭ Ownership Private
- Repair Needed
- ▭ Repair Needed



NAD 1983 UTM zone 10N



DIV B

DIV

DP-26

DP-27

DP-14

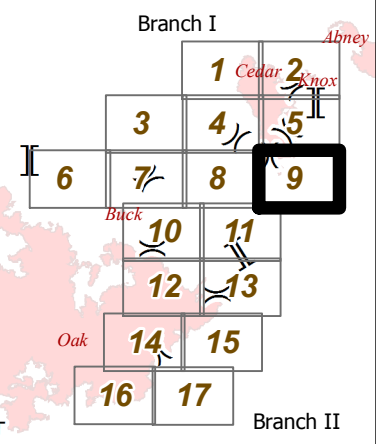
DP-15

Bald Hornet Fire

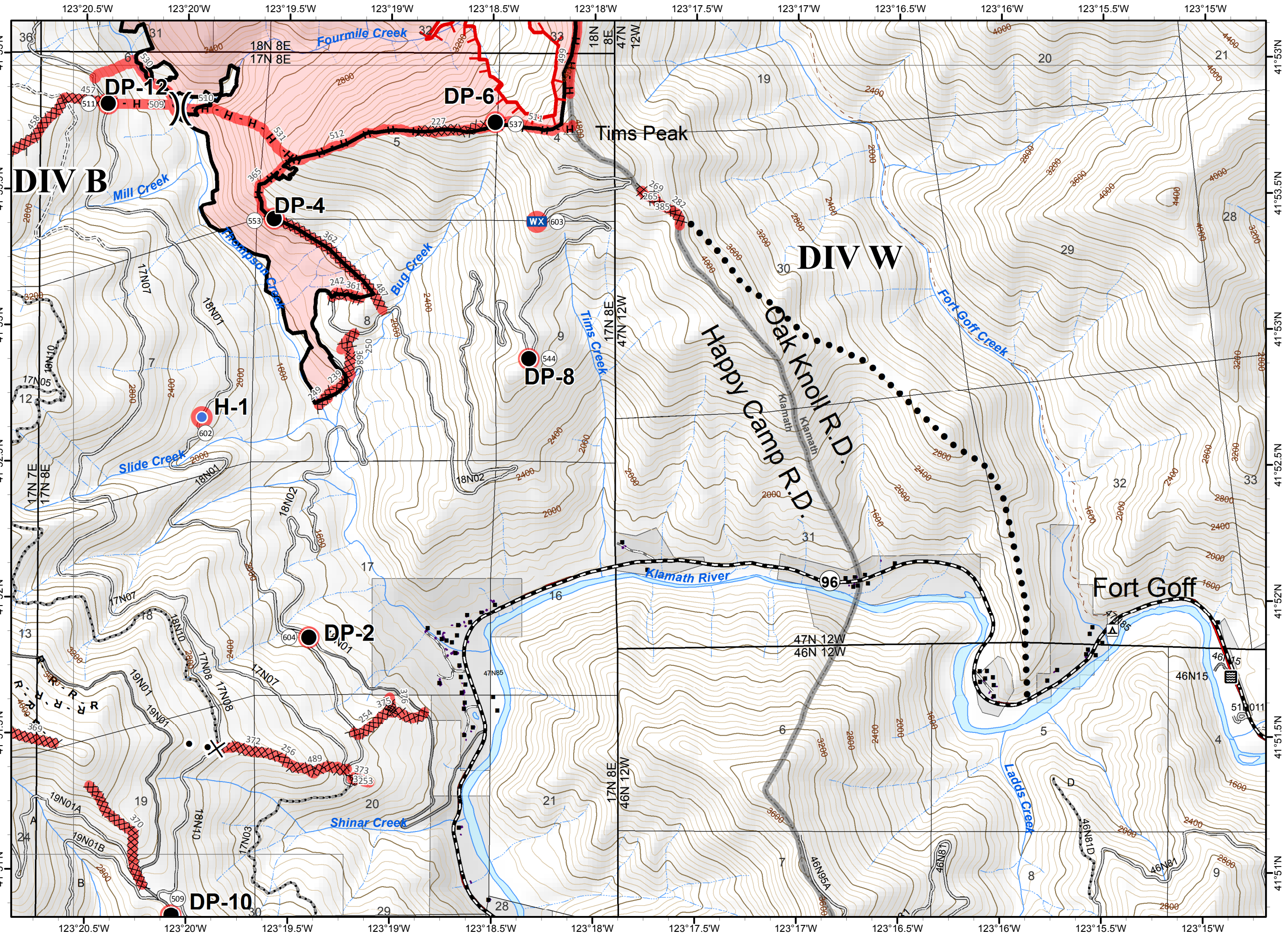
Slater Butte Lookout CMD-1

ECLIPSE COMPLEX
 CA-KNF-006098
 SEPTEMBER 19 2017

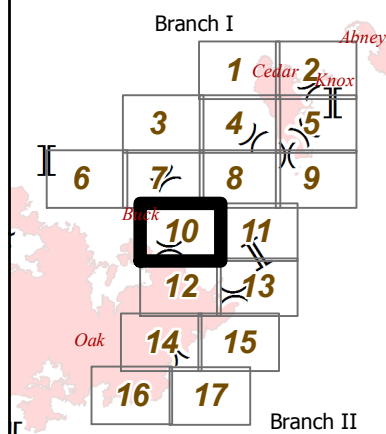
- Page 9 of 17
- () Division
 - [] Branch
 - Drop Point
 - Helispot
 - WX Mobile Weather Unit
 - ┌ Uncontrolled Fire Edge
 - └ Planned Fire Edge
 - Secondary Line
 - ⊗ Completed Dozer Line
 - Completed Line
 - H - Hand Line
 - R - Road as Completed Line
 - ⊗ Proposed Dozer Line
 - ▭ Ranger District Boundary
 - ▭ Fire Perimeter
 - ▭ Ownership Private
 - Repair Needed
 - Repair Needed



NAD 1983 UTM zone 10N

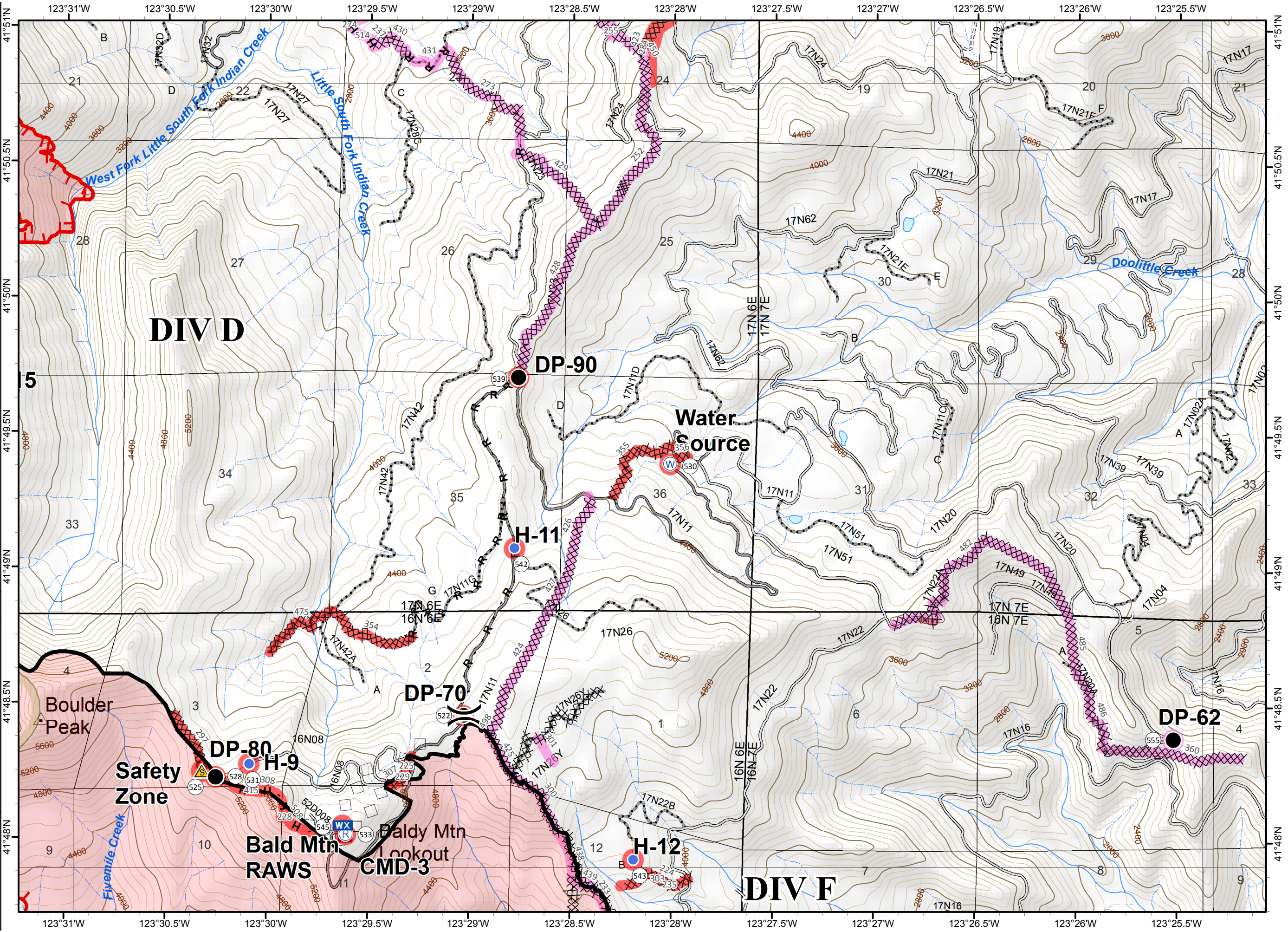


- () Division
- [] Branch
- Drop Point
- Helispot
- WX Mobile Weather Unit
- Ⓡ Repeater
- ⚠ Safety Zone
- Ⓜ Water Source
- Uncontrolled Fire Edge
- ◇ Aerial Retardant Drop
- ⊗ Completed Dozer Line
- Completed Line
- H - Hand Line
- R - Completed Line
- Planned Fire Line
- ▭ Ranger District Boundary
- ▭ Fire Perimeter
- ▭ Wilderness
- Ready to be Worked On
- Repair Needed
- ▭ Ready to be Worked On
- ▭ Repair Needed

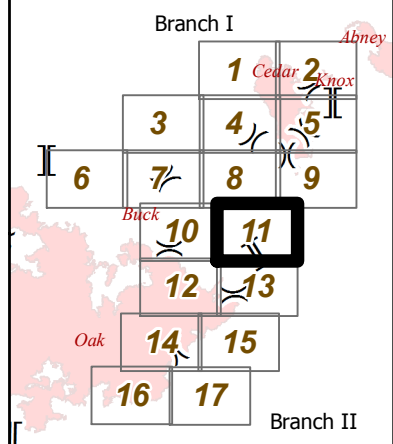


0 0.2 0.4 Miles

NAD 1983 UTM zone 10N

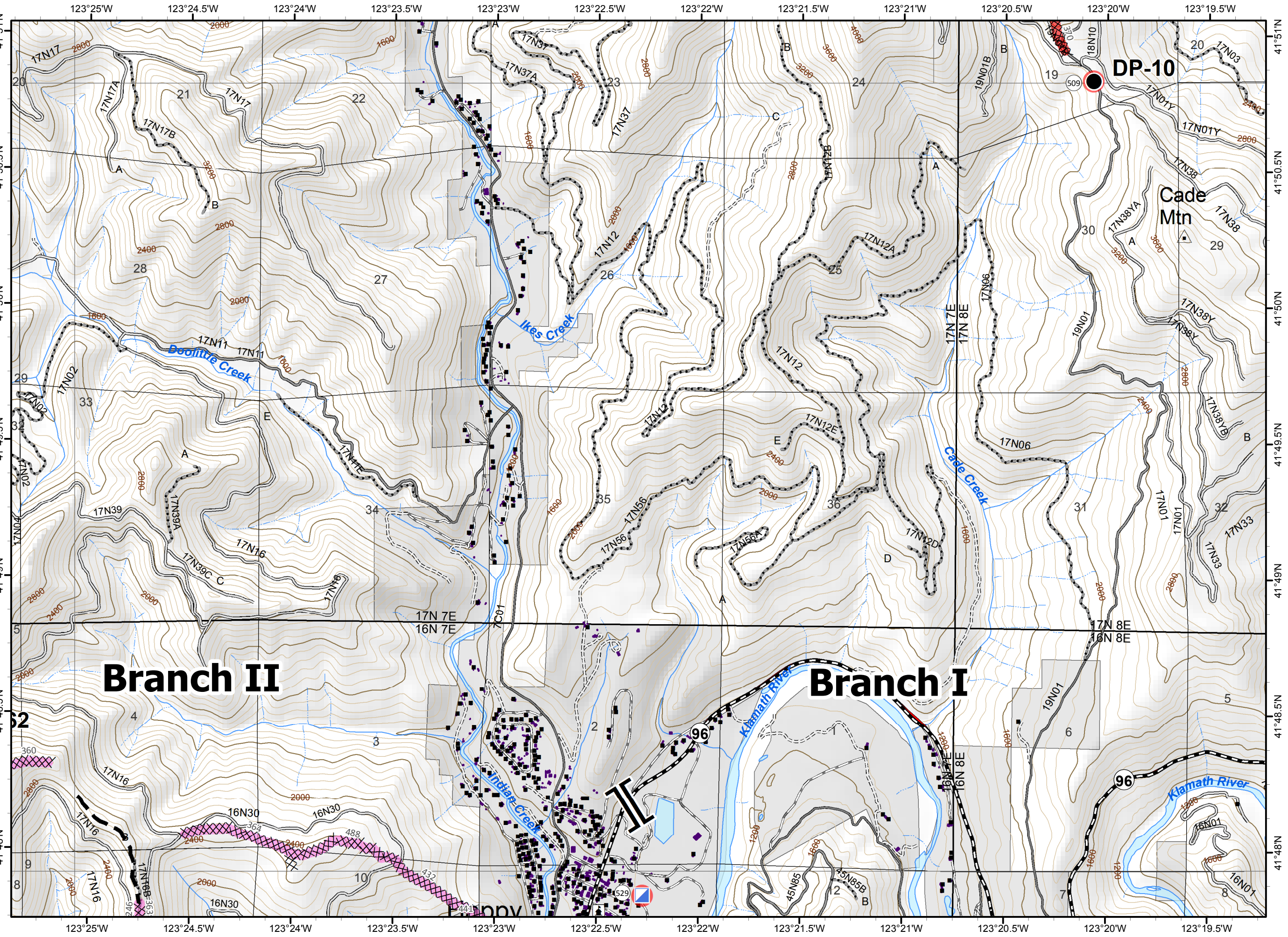


- Division
- Branch
- Drop Point
- Incident Command Post
- Completed Dozer Line
- Planned Fire Line
- Ranger District Boundary
- Ownership Private
- Repair Needed
- Ready to be Worked On
- Repair Needed



0 0.2 0.4 Miles

NAD 1983 UTM zone 10N



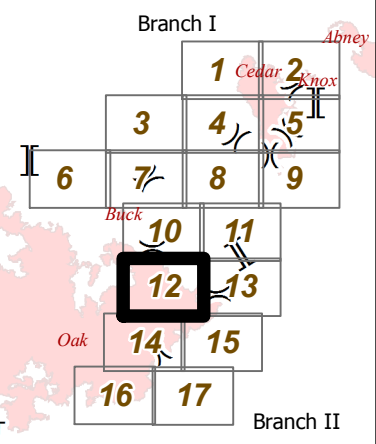
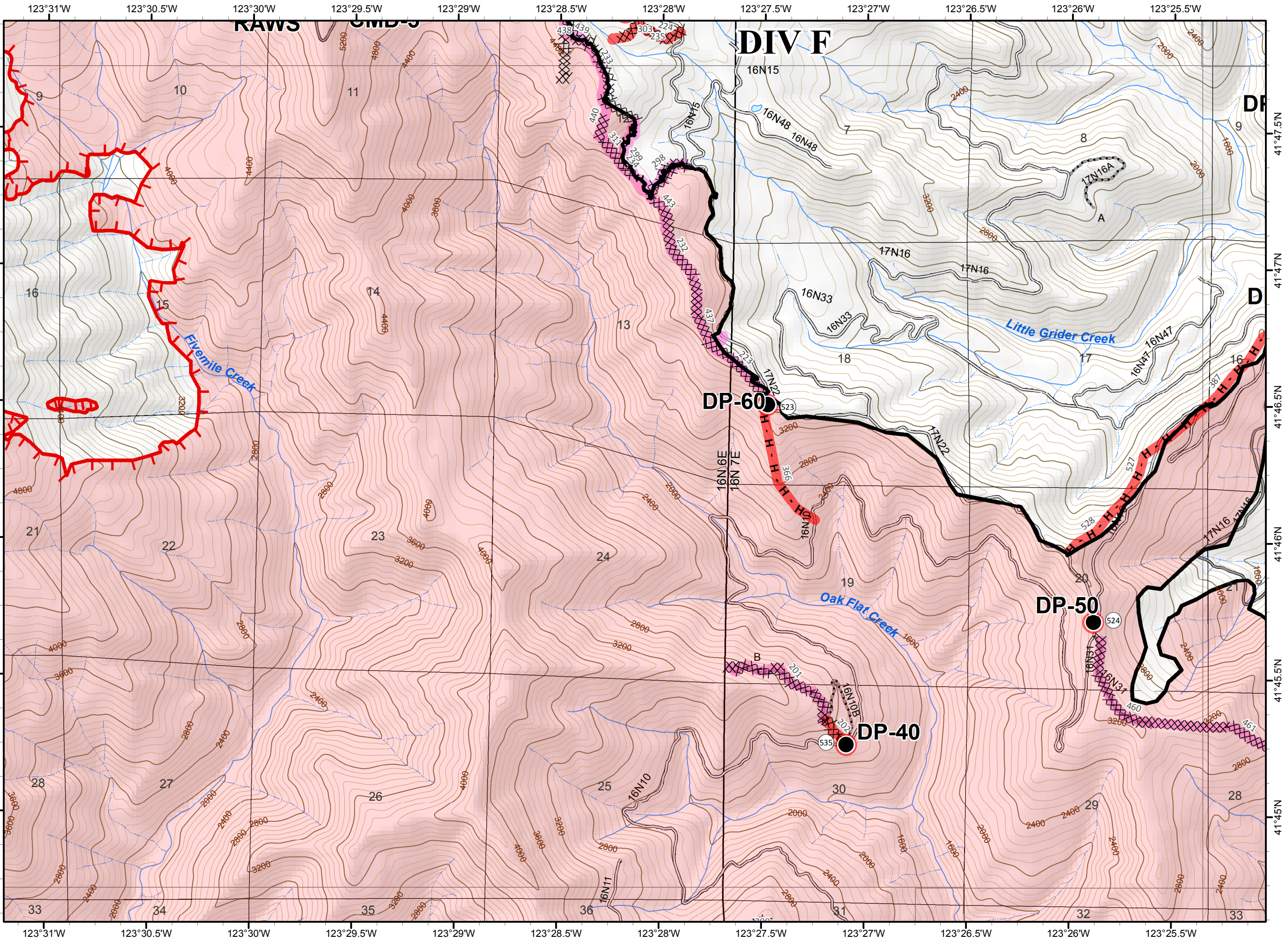
Branch II

Branch I

DP-10

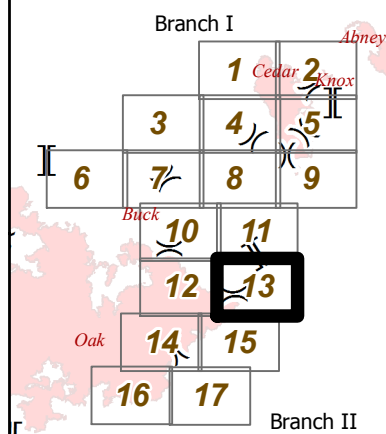
Cade Mtn

- Division
- Branch
- Drop Point
- Uncontrolled Fire Edge
- Completed Dozer Line
- Completed Line
- H - Hand Line
- Ranger District Boundary
- Fire Perimeter
- Repair Needed
- Ready to be Worked On
- Repair Needed

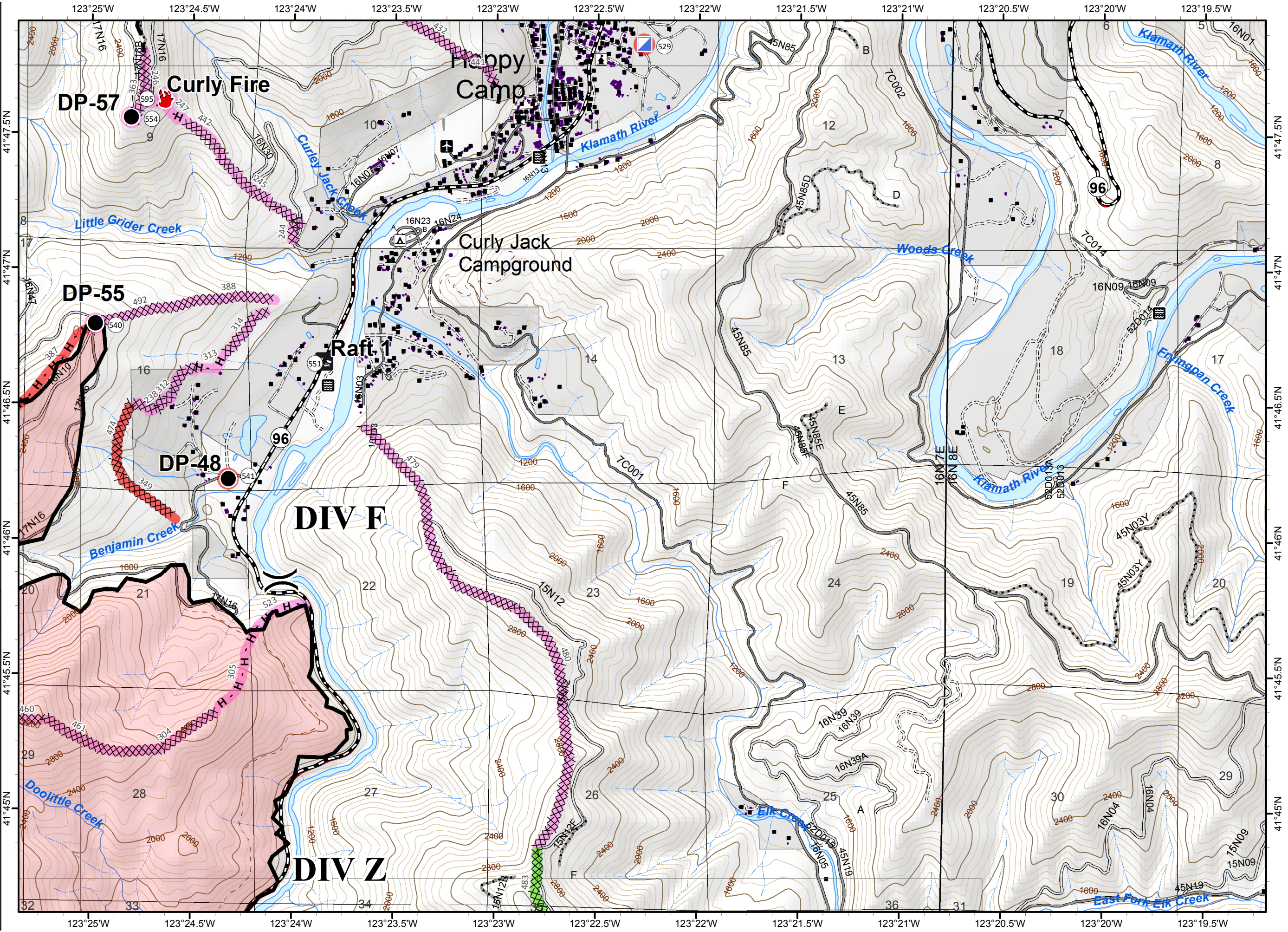


This block contains the official logos for the US Forest Service and the Southern California Fire Department. It also includes a compass rose showing North, South, East, and West, and a scale bar indicating distances of 0, 0.2, and 0.4 miles. The text 'NAD 1983 UTM zone 10N' is printed at the bottom.

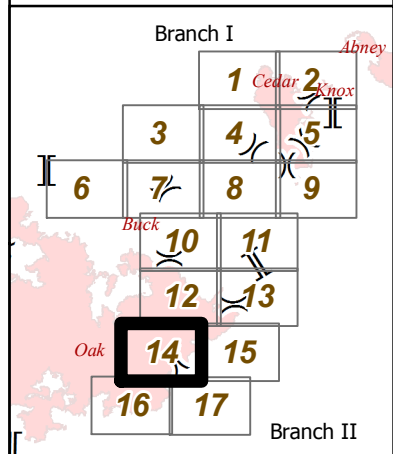
- Division
- Branch
- Boat Ramp
- Drop Point
- Fire Location
- Incident Command Post
- Completed Dozer Line
- Completed Line
- Hand Line
- Planned Fire Line
- Ranger District Boundary
- Fire Perimeter
- Ownership Private
- Ready to be Worked On
- Repair Needed
- Completed - Inspected
- Ready to be Worked On
- Repair Needed



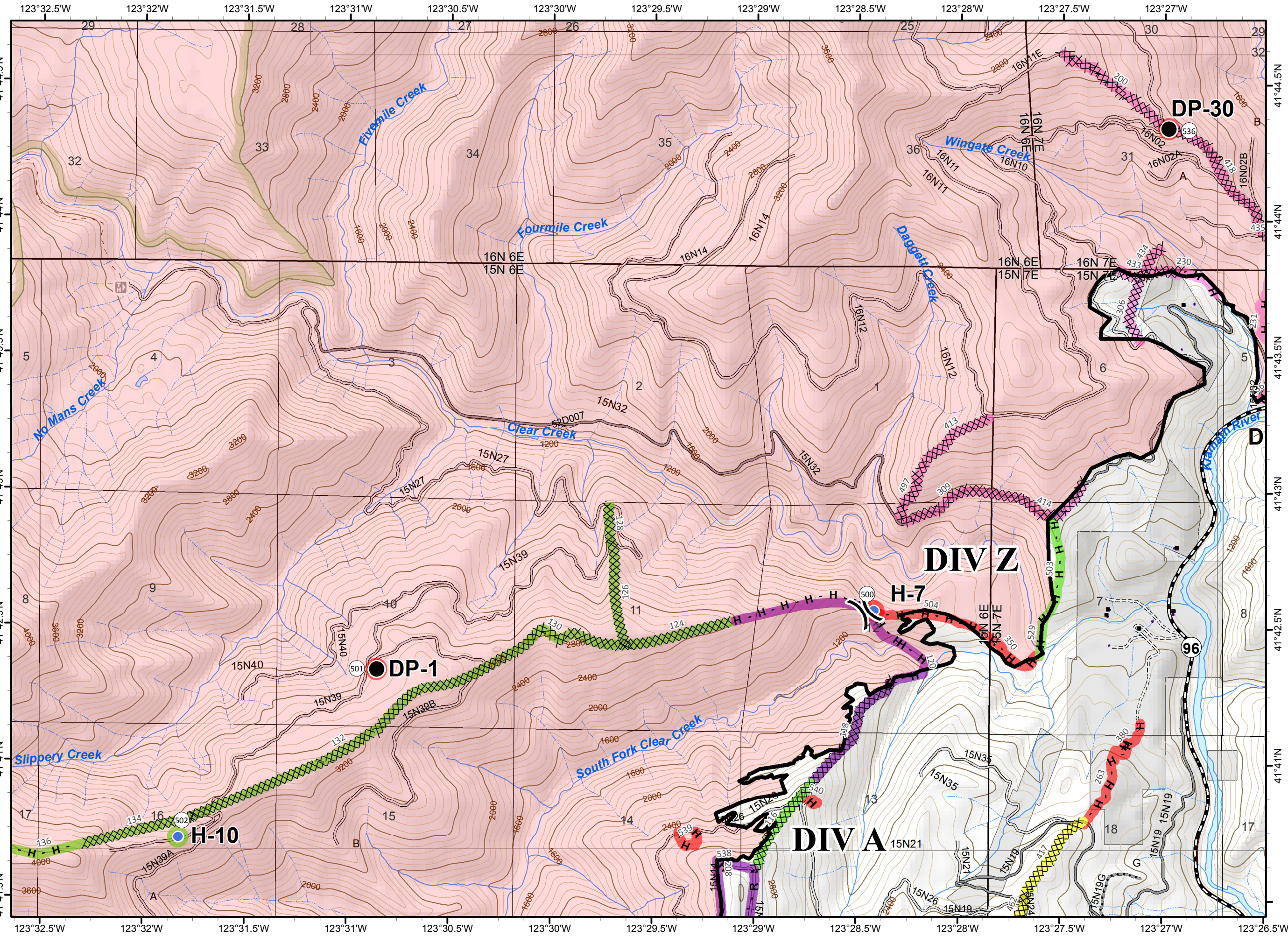
NAD 1983 UTM zone 10N



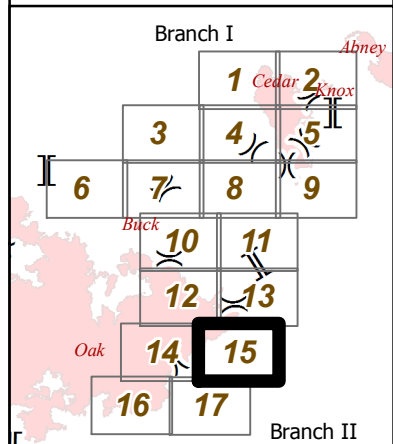
- Division
- Branch
- Drop Point
- Helispot
- Completed Dozer Line
- Completed Line
- H - Hand Line
- R - Road as Completed Line
- Ranger District Boundary
- Fire Perimeter
- Wilderness
- Ownership Private
- Completed - Inspected
- Repair Needed
- Completed - Inspected
- In Progress
- Ready to be Worked On
- Repair Needed
- Unknown



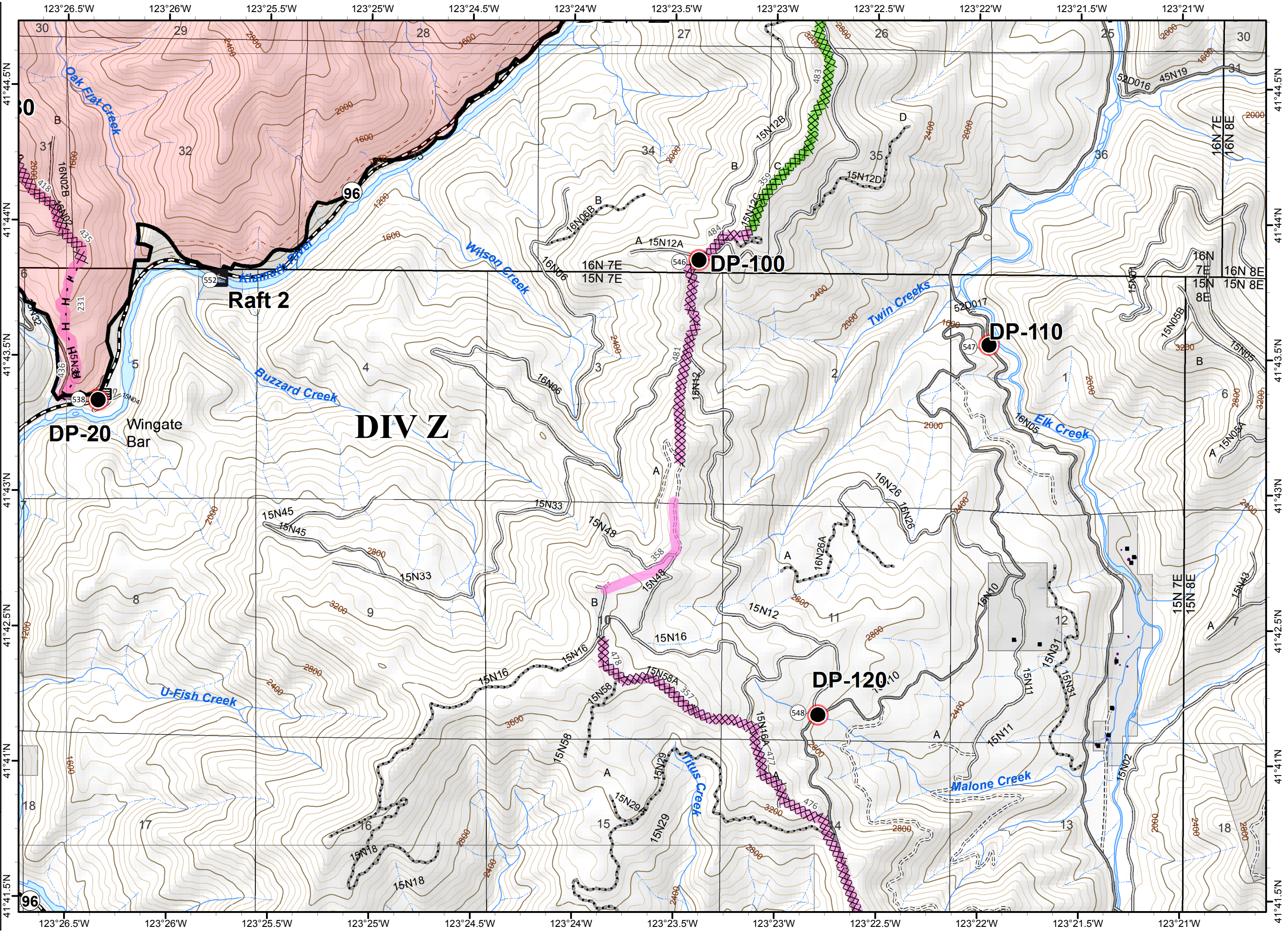
0 0.2 0.4 Miles
 NAD 1983 UTM zone 10N



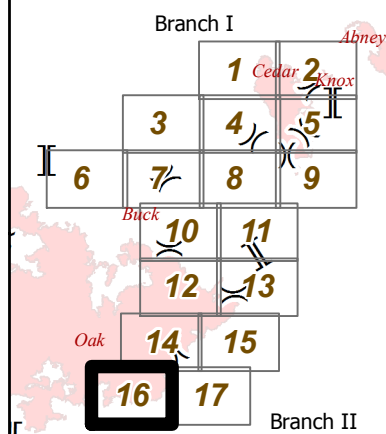
- Division
- Branch
- Boat Ramp
- Drop Point
- Completed Dozer Line
- Completed Line
- Hand Line
- Ranger District Boundary
- Fire Perimeter
- Ownership Private
- Repair Needed
- Completed - Inspected
- Ready to be Worked On



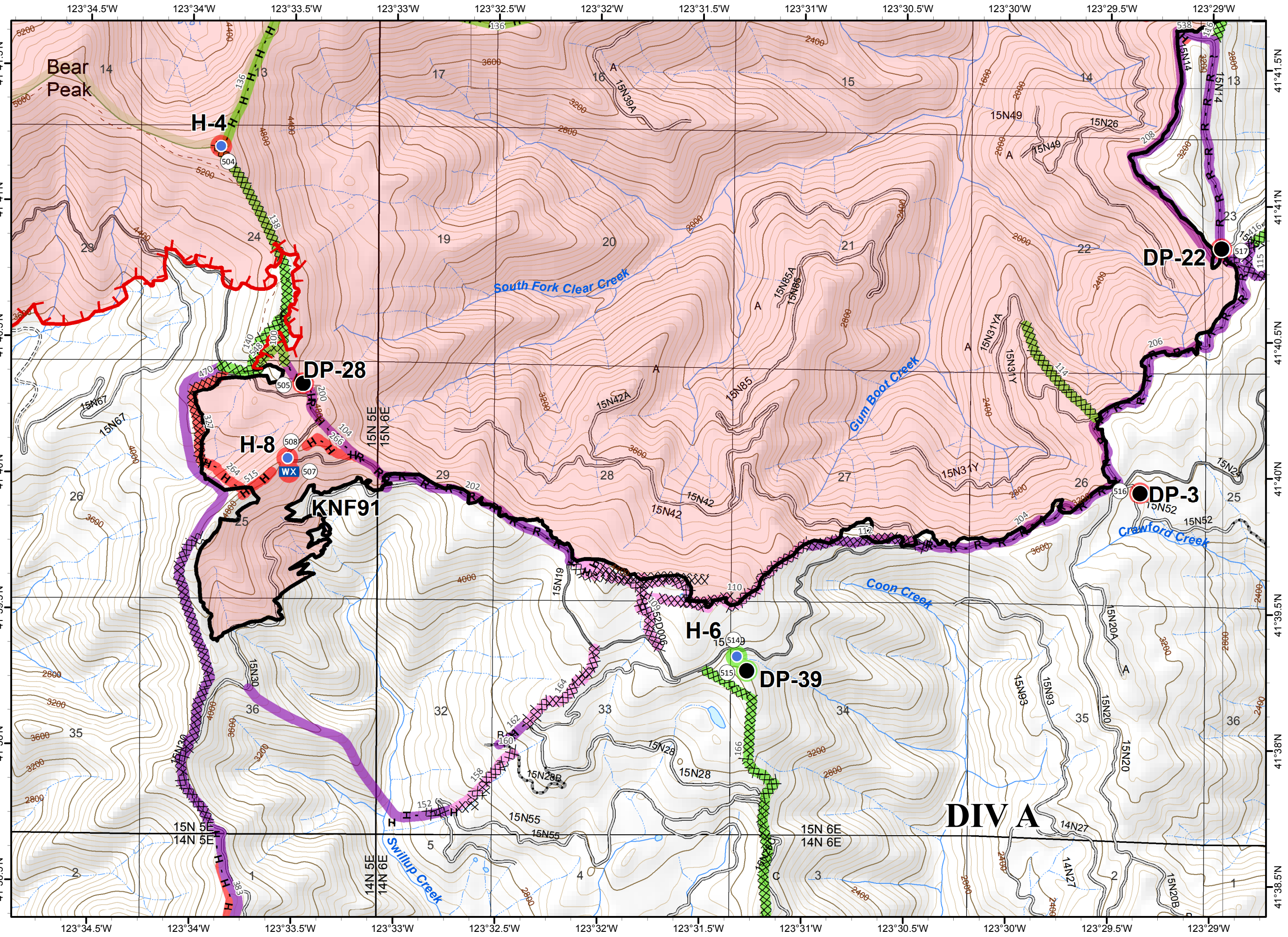
NAD 1983 UTM zone 10N



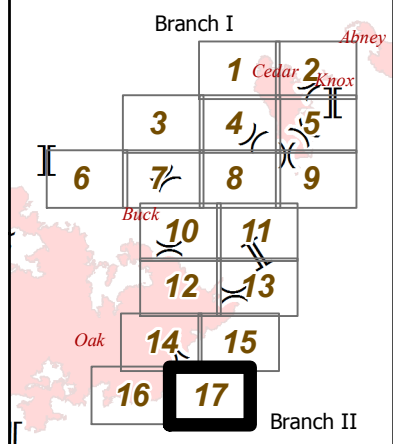
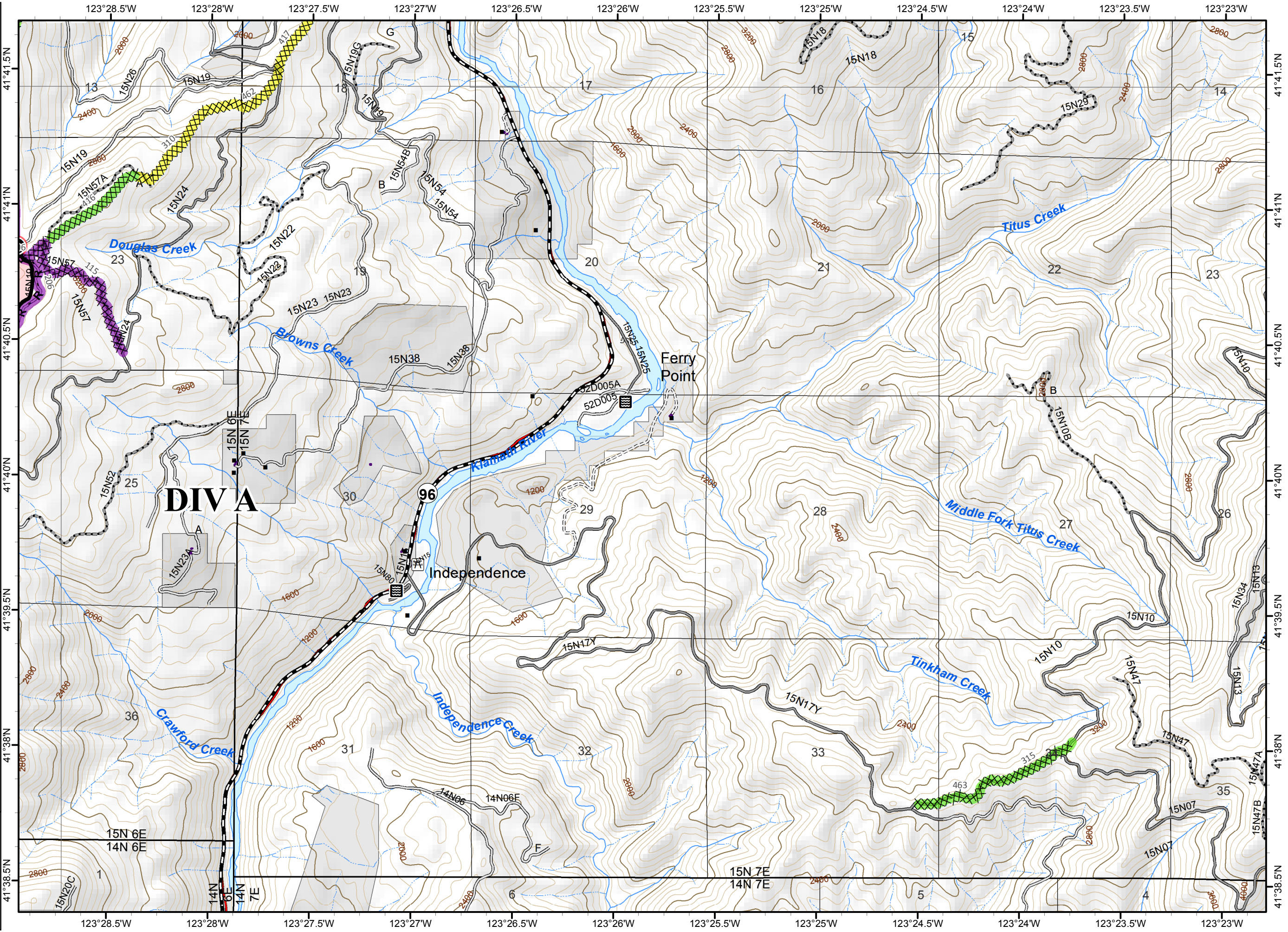
- () Division
- [] Branch
- Drop Point
- Helispot
- WX Mobile Weather Unit
- Uncontrolled Fire Edge
- XXXX Completed Dozer Line
- Completed Line
- H - Hand Line
- R - Completed Line
- ▭ Ranger District Boundary
- ▭ Fire Perimeter
- ▭ Wilderness
- Completed - Inspected
- Repair Needed
- ▭ Completed - Inspected
- ▭ Ready to be Worked On
- ▭ Repair Needed
- ▭ Unknown



NAD 1983 UTM zone 10N



- Division
- Branch
- Drop Point
- Completed Dozer Line
- Completed Line
- Road as R - Completed Line
- Ranger District Boundary
- Fire Perimeter
- Ownership Private
- Repair Needed
- Completed - Inspected
- In Progress
- Unknown



0 0.2 0.4 Miles

NAD 1983 UTM zone 10N