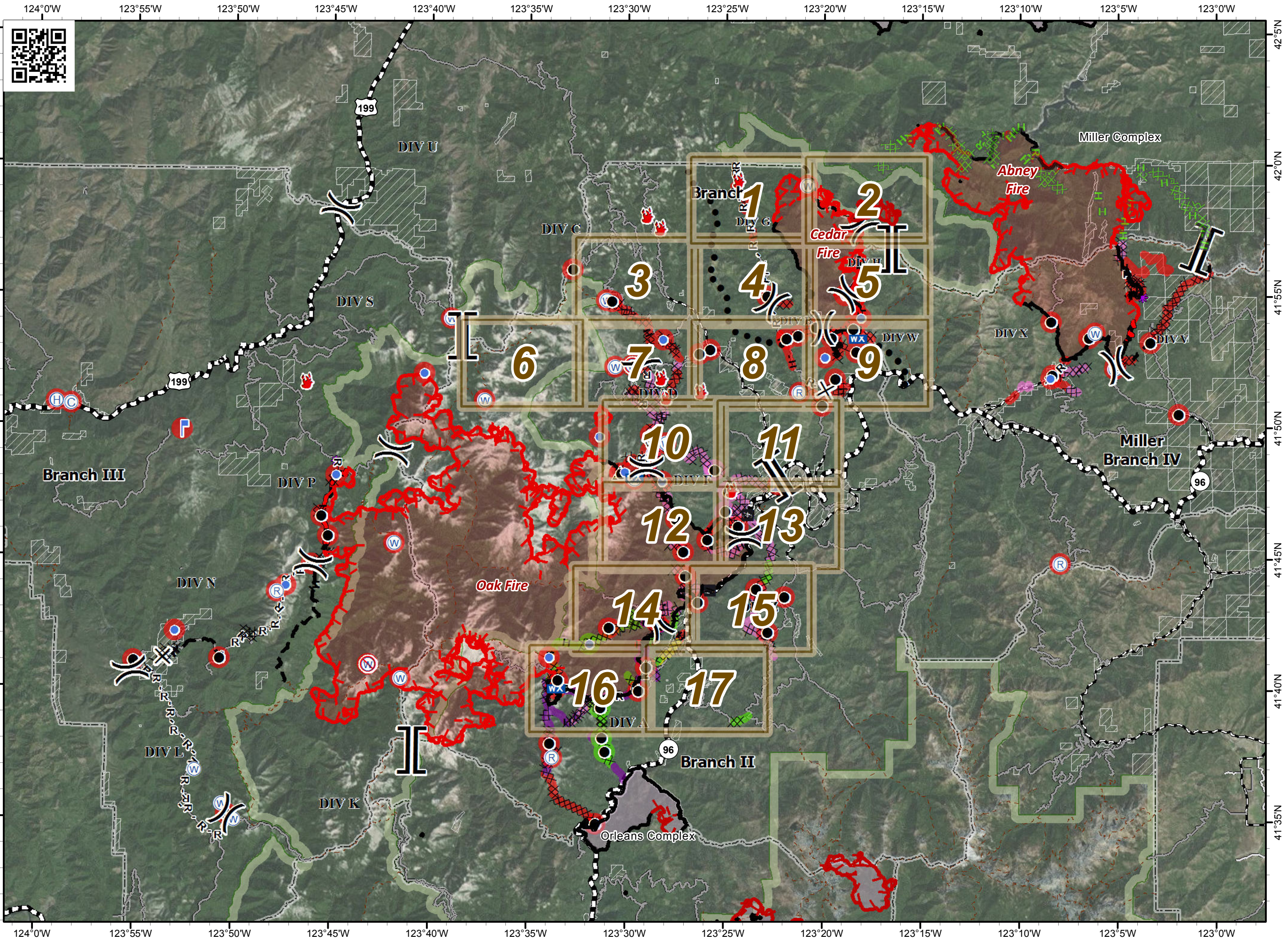


ECLIPSE COMPLEX
CA-KNF-006098
SEPTEMBER 19 2017

IAP MAP BRANCH I & II

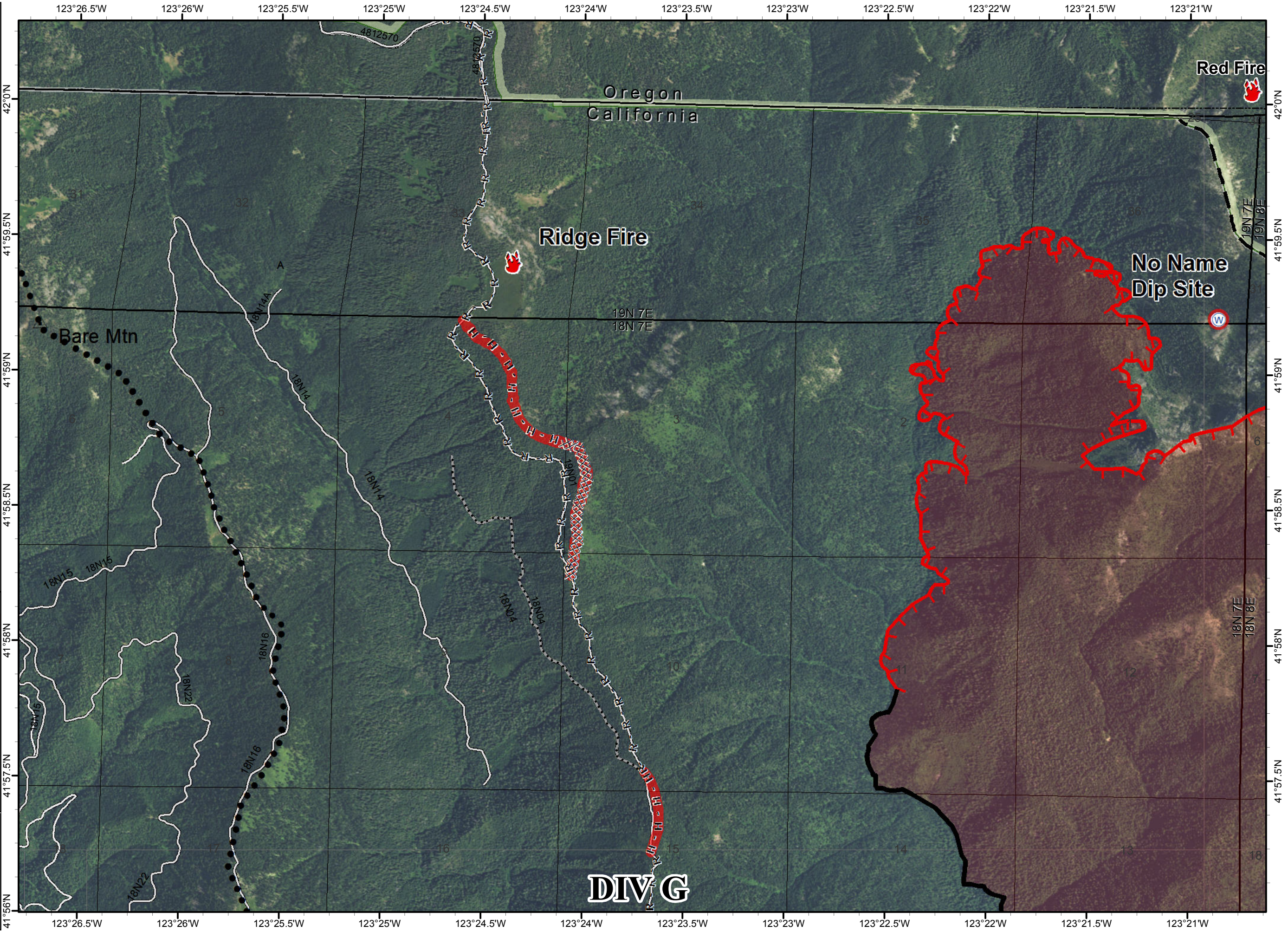
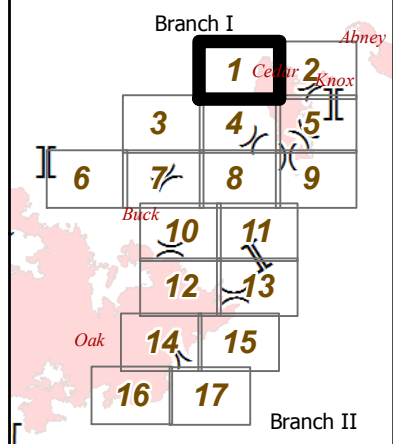
Index

- IAP Tiles Branch I & II
- Road Washout
- Fire Perimeter
- Division
- Branch
- Uncontrolled Fire Edge
- Ridge / Geographic Feature
- Aerial Retardant Drop
- Planned Secondary Line
- Completed Dozer Line
- Completed Line
- H - Hand Line
- R - Completed Line
- Planned Fire Line
- Proposed Dozer Line
- Containment Line
- Ownership Private
- Ranger District Boundary
- Wilderness
- Boat Ramp
- Camp
- Drop Point
- Fire Location
- Helibase
- Helispot
- Incident Command Post
- Lookout
- Mobile Weather Unit
- Repeater
- Safety Zone
- Water Source
- Restricted Water Source
- Completed - Inspected
- Ready to be Worked On
- Repair Needed
- Completed - Inspected
- In Progress
- Ready to be Worked On
- Repair Needed
- Unknown

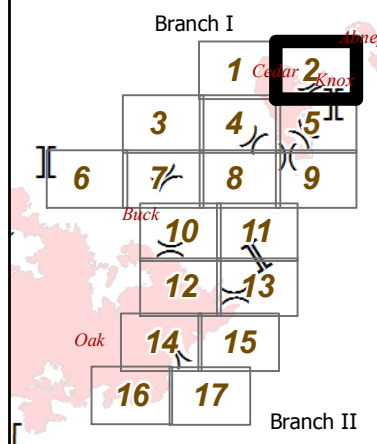


0 2 4 Miles
NAD 1983 UTM zone 10N

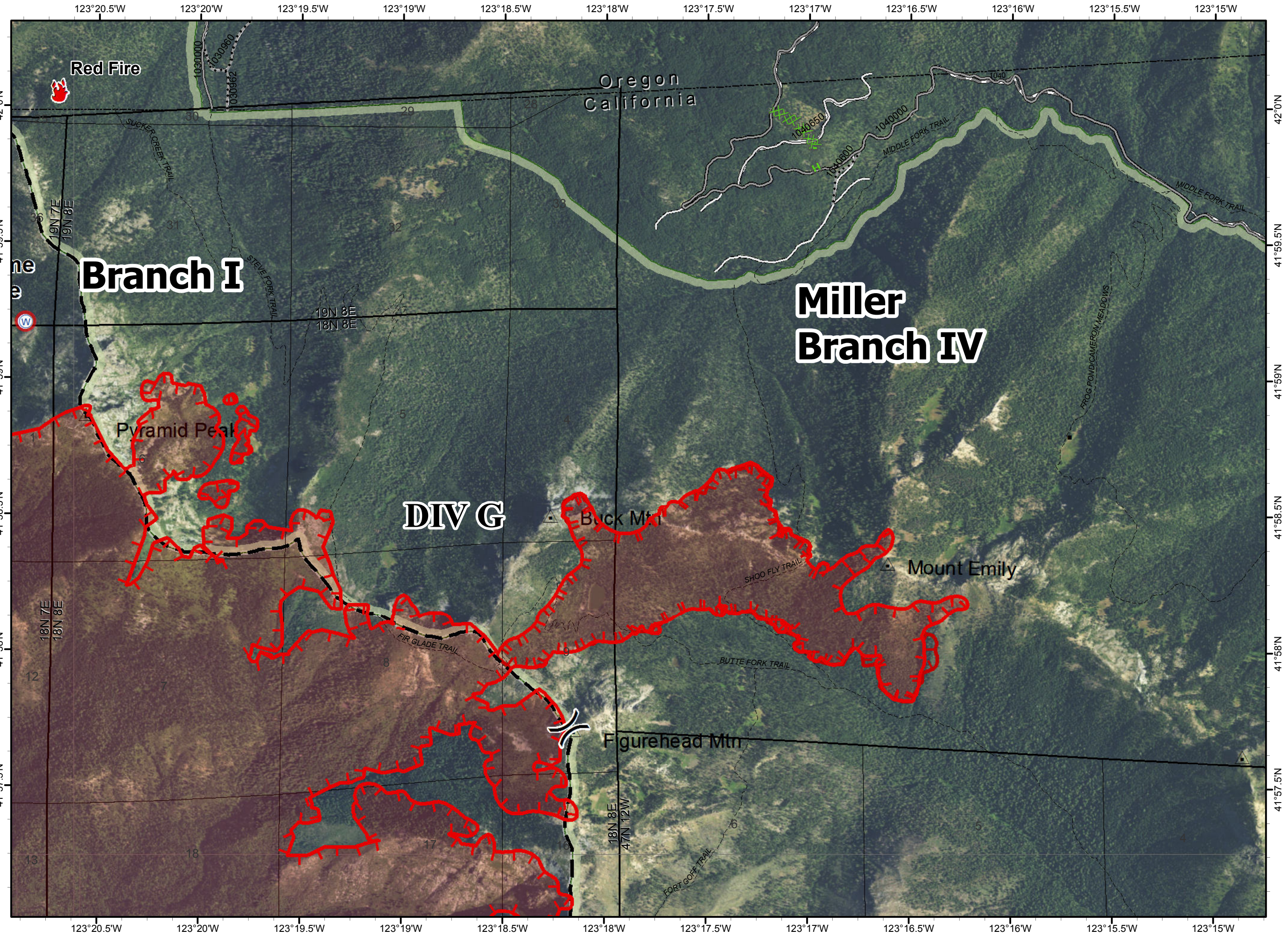
- () Division
- ▭ Ranger District Boundary
- || Branch
- ▭ Fire Perimeter
- 🔥 Fire Location
- 🌿 Wilderness
- Ⓜ Water Source
- Repair Needed
- Uncontrolled Fire Edge
- Planned Secondary Line
- ⊗ Completed Dozer Line
- Completed Line
- H - Hand Line
- R - Road as Completed Line
- Planned Fire Line



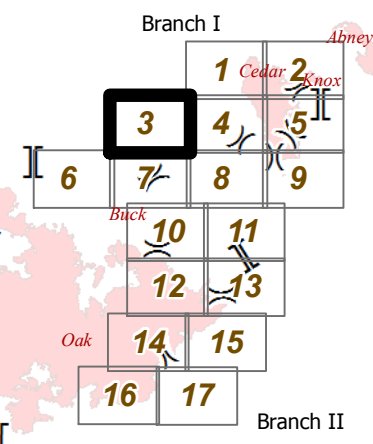
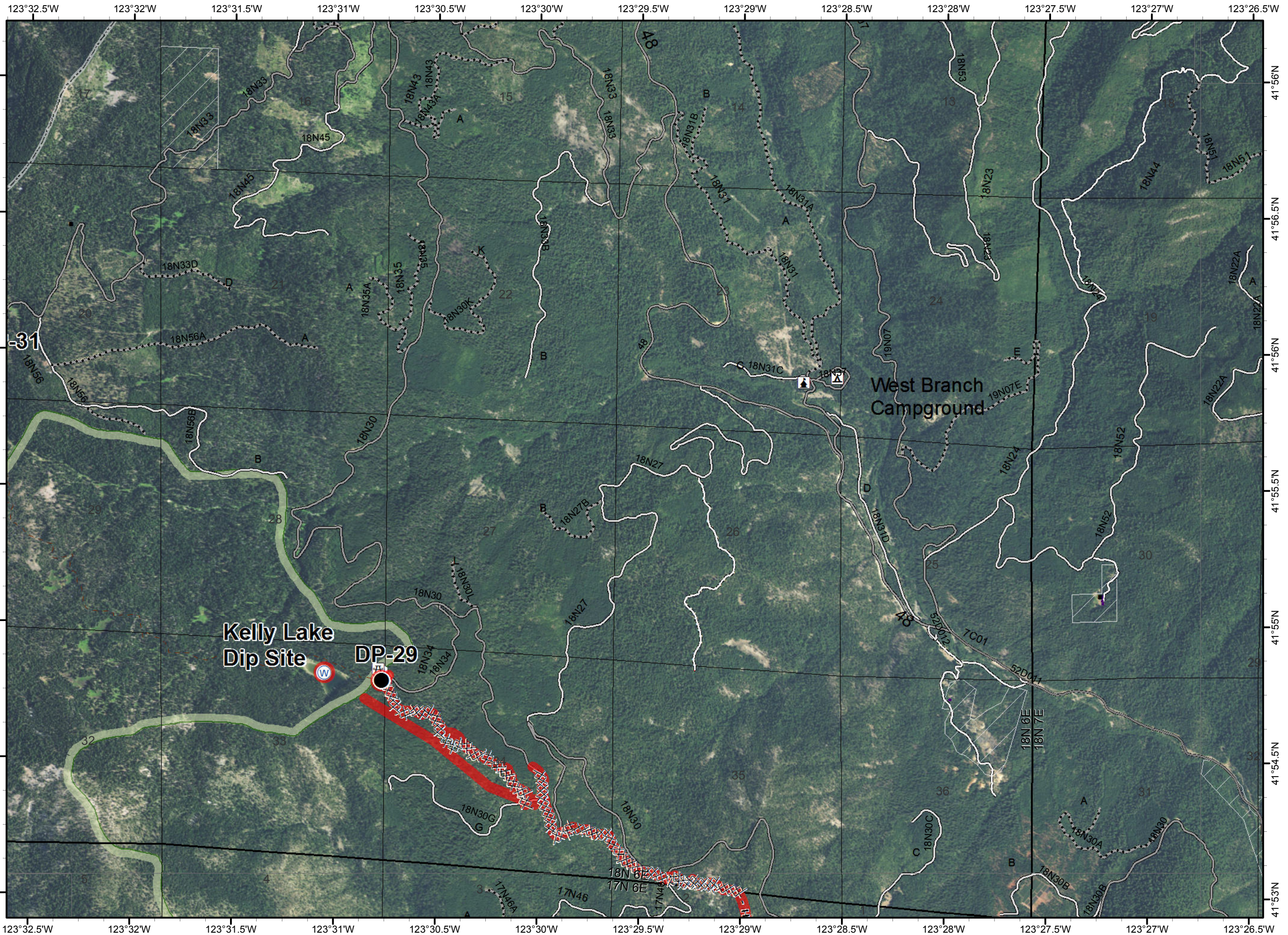
- () Division
- [] Branch
- Miller Completed Dozer Line
- Miller Completed Hand Line
- Water Source
- Uncontrolled Fire Edge
- Planned Fire Line
- Ranger District Boundary
- Fire Perimeter
- Uncontrolled Fire Edge
- Wilderness
- Ownership Private
- Repair Needed



NAD 1983 UTM zone 10N



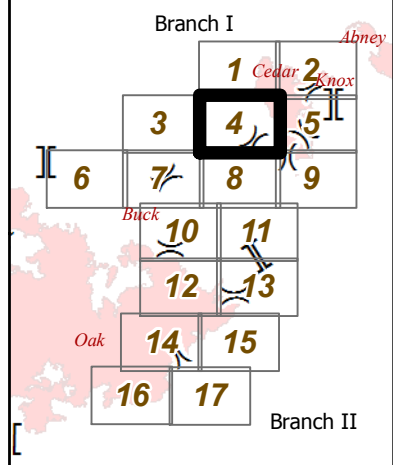
- () Division
- ⌋ Branch
- Drop Point
- ⊕ Water Source
- ⊗ Completed Dozer Line
- H - Hand Line
- ▭ Ranger District Boundary
- ▭ Wilderness
- ▭ Ownership Private
- Repair Needed
- ▭ Repair Needed



0 0.2 0.4 Miles

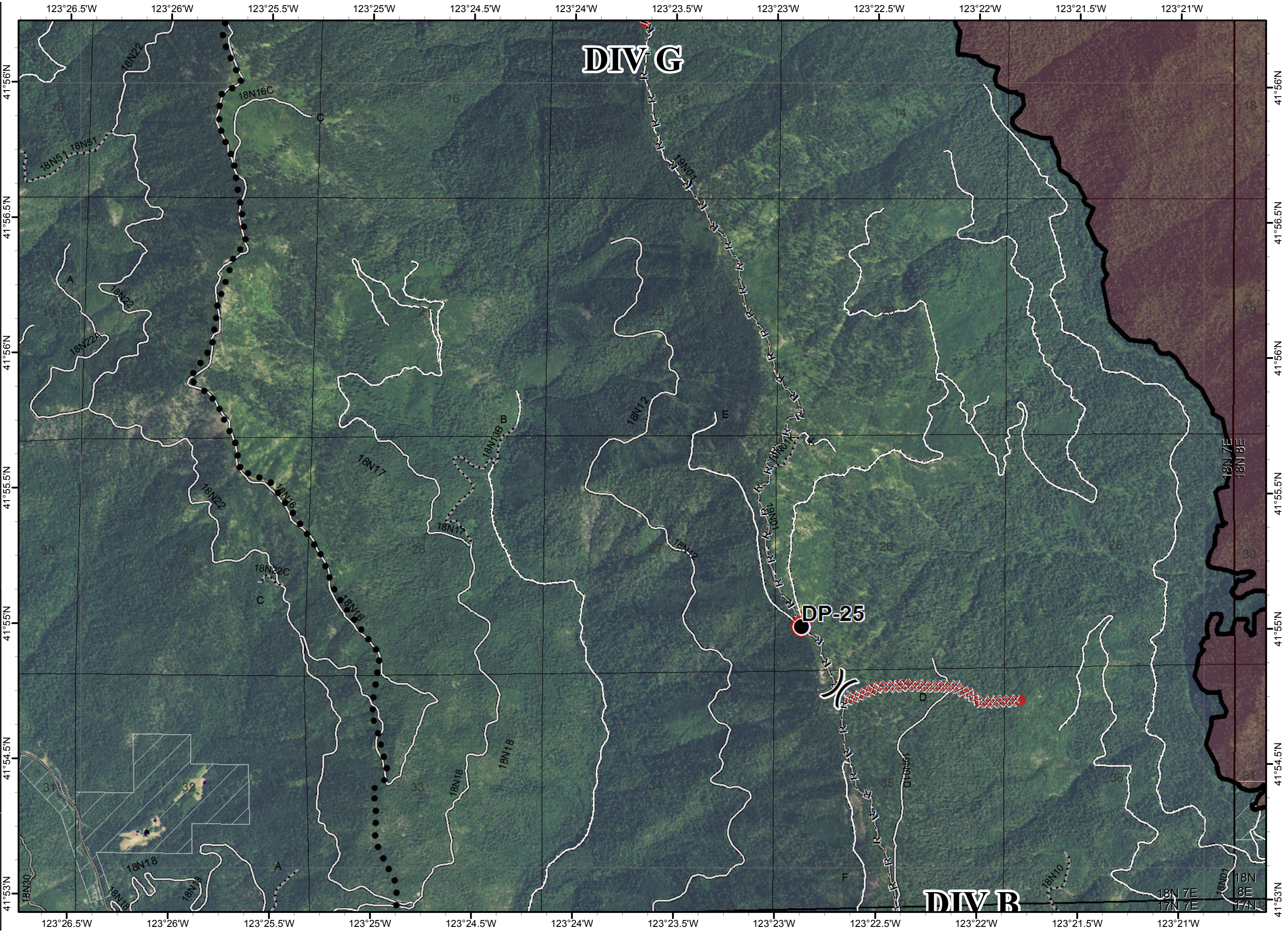
NAD 1983 UTM zone 10N

- () Division
- [] Branch
- Drop Point
- Planned Secondary Line
- XXXX Completed Dozer Line
- Completed Line
- H - Hand Line
- R - Road as Completed Line
- ▭ Ranger District Boundary
- Fire Perimeter
- ▭ Ownership Private
- Repair Needed
- ▭ Repair Needed



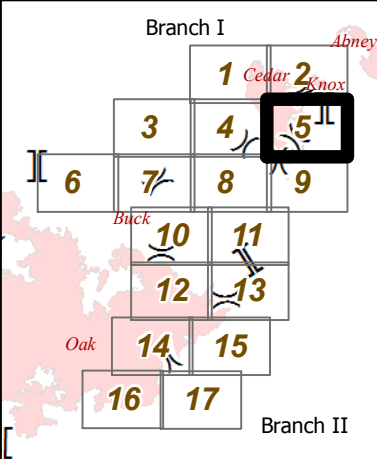
0 0.2 0.4 Miles

NAD 1983 UTM zone 10N



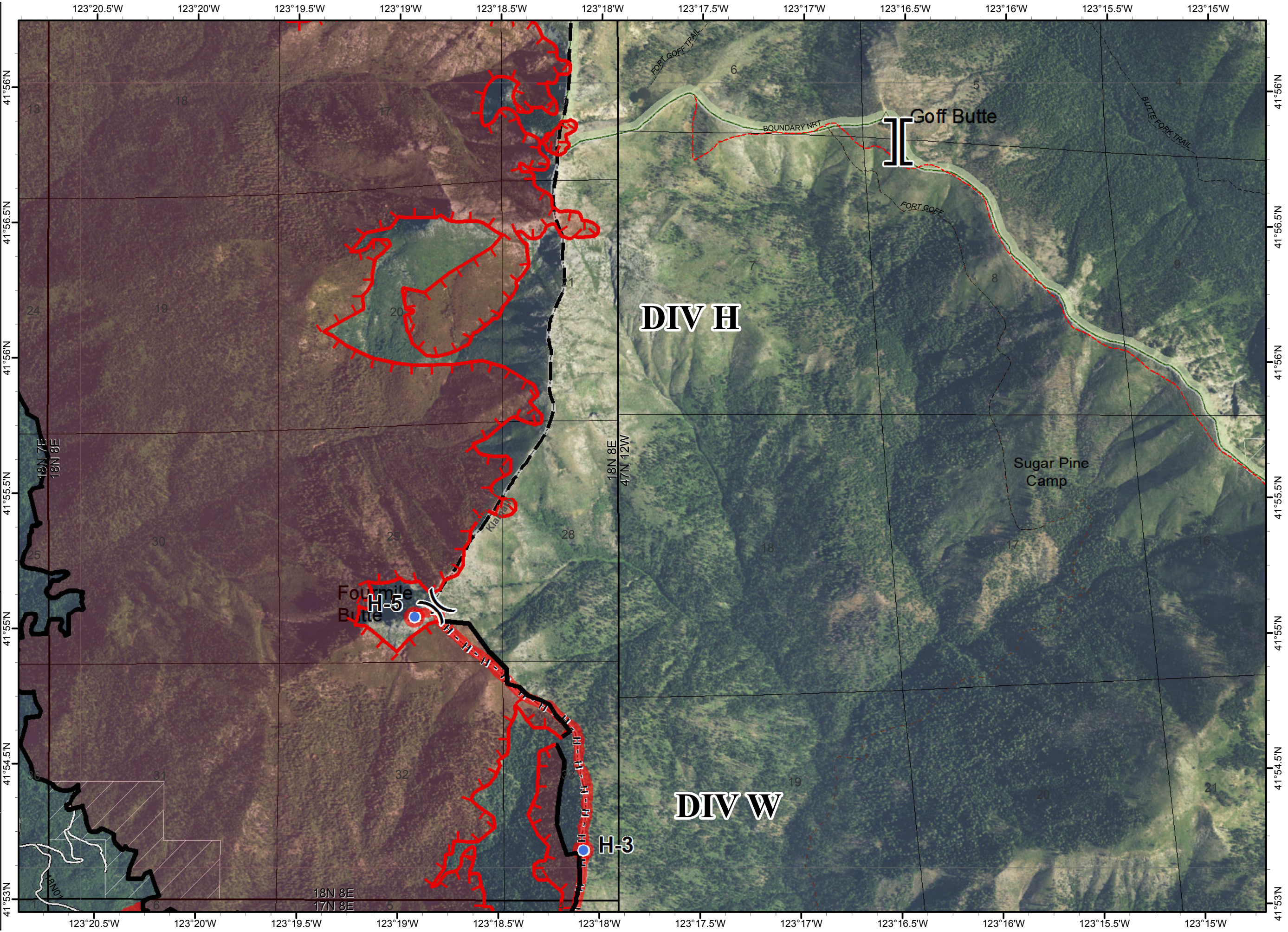
IAP MAP
 BRANCH I & II

- () Division
- [] Branch
- Helispot
- [] Uncontrolled Fire Edge
- [] Completed Line
- H - Hand Line
- [] Planned Fire Line
- [] Ranger District Boundary
- [] Fire Perimeter
- [] Wilderness
- [] Ownership Private
- Repair Needed
- Repair Needed

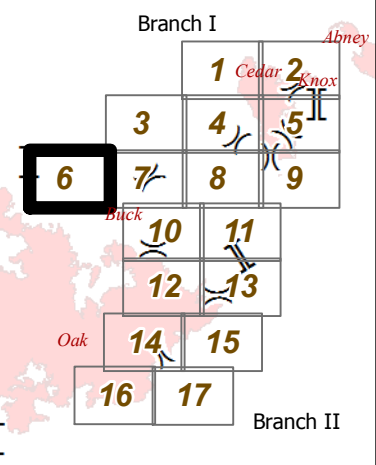
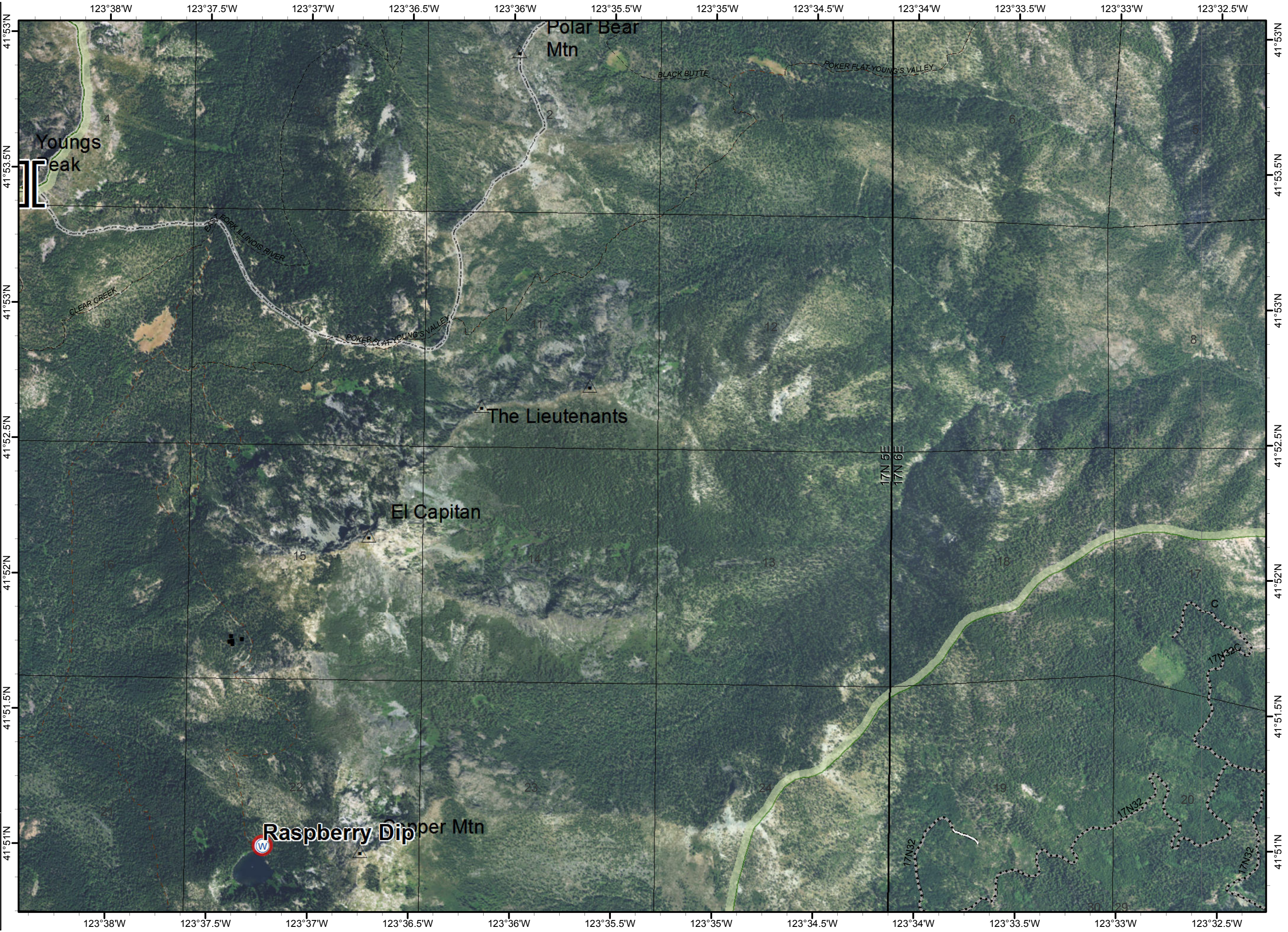


0 0.2 0.4 Miles

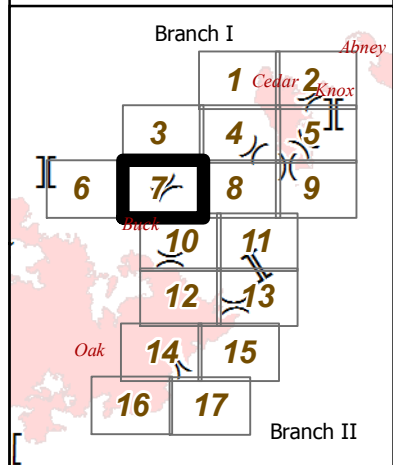
NAD 1983 UTM zone 10N



- () Division
- () Branch
- (W) Water Source
- Ranger District Boundary
- Wilderness
- Ownership Private
- Repair Needed

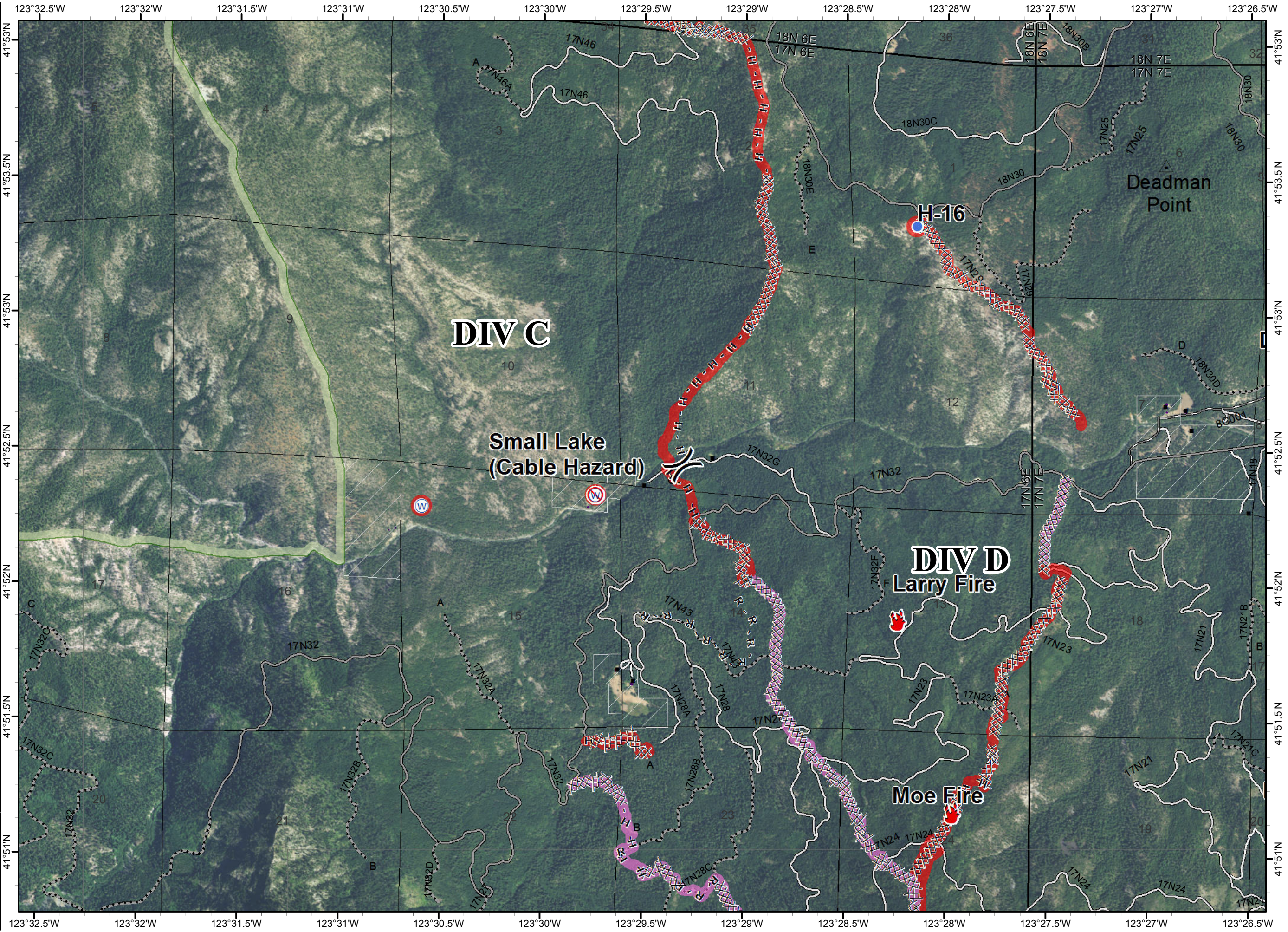


- (X) Division
- (||) Branch
- 🔥 Fire Location
- Helispot
- Ⓜ Water Source
- Ⓜ Restricted Water Source
- XXXXX Completed Dozer Line
- H - Hand Line
- R - Road as Completed Line
- Planned Fire Line
- ▭ Ranger District Boundary
- ▭ Wilderness
- ▭ Ownership Private
- Repair Needed
- ▭ Ready to be Worked On
- ▭ Repair Needed

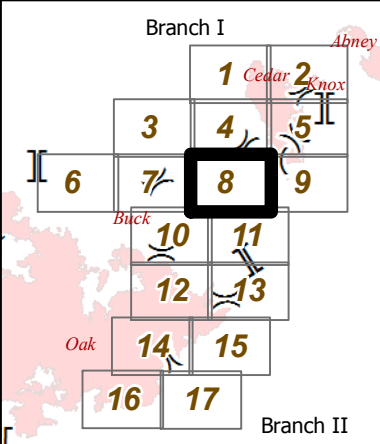


0 0.2 0.4 Miles

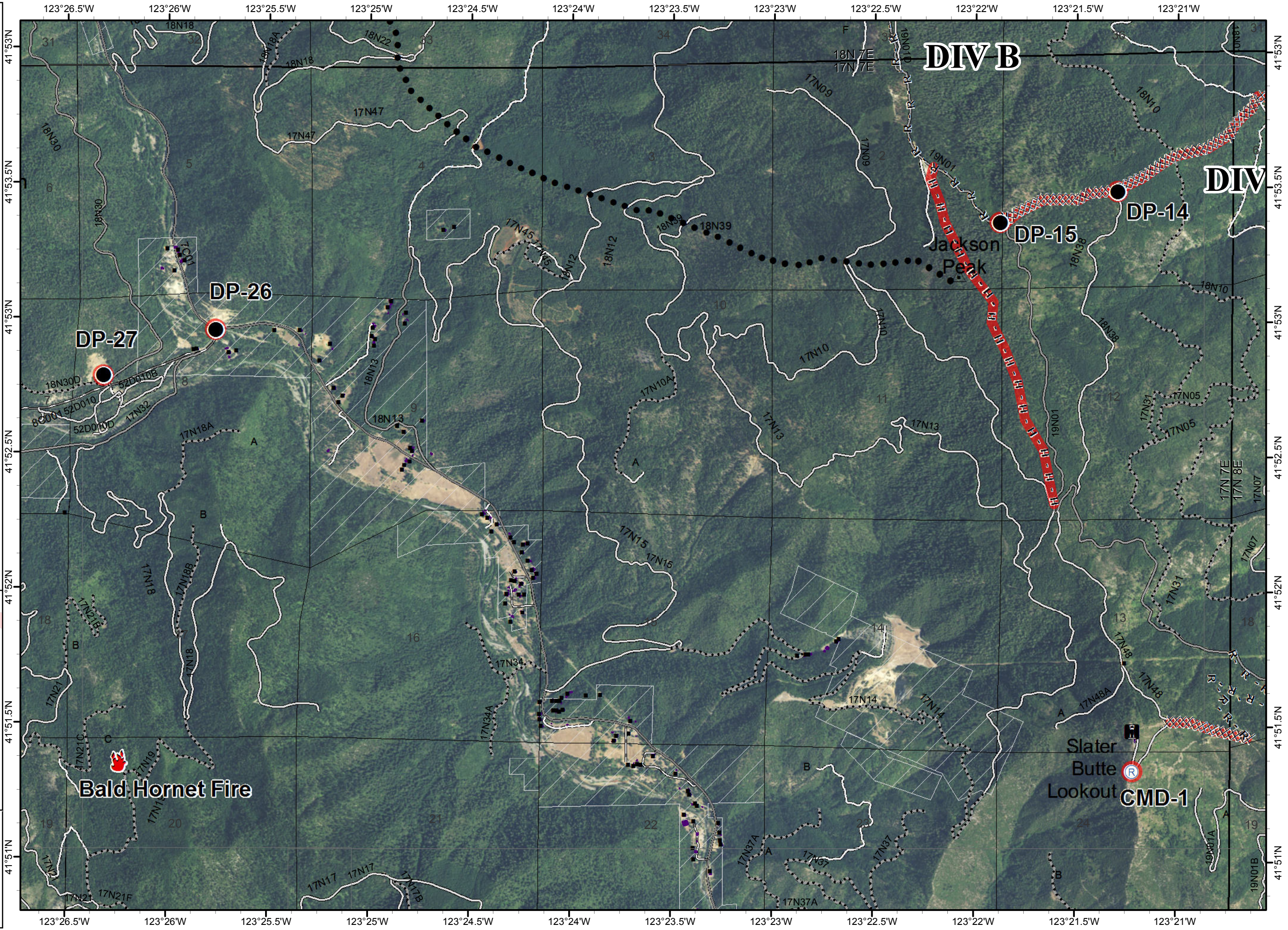
NAD 1983 UTM zone 10N



- () Division
- ⌋ Branch
- Drop Point
- 🔥 Fire Location
- Ⓡ Repeater
- Planned
- Secondary Line
- XXXX Completed Dozer Line
- H - Hand Line
- R - Road as Completed Line
- ▭ Ranger District Boundary
- ▭ Ownership Private
- Repair Needed
- ▬ Repair Needed



NAD 1983 UTM zone 10N



DIV B

DIV

DP-26

DP-27

DP-15

DP-14

Bald Hornet Fire

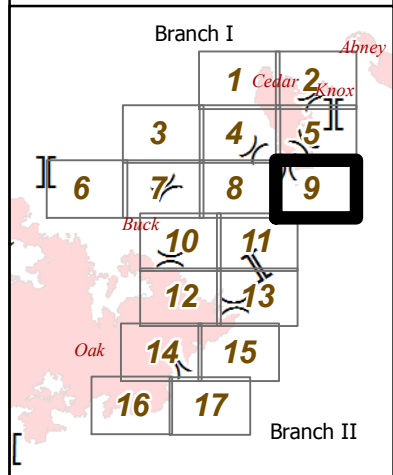
**Slater Butte Lookout
 CMD-1**

Jackson Peak

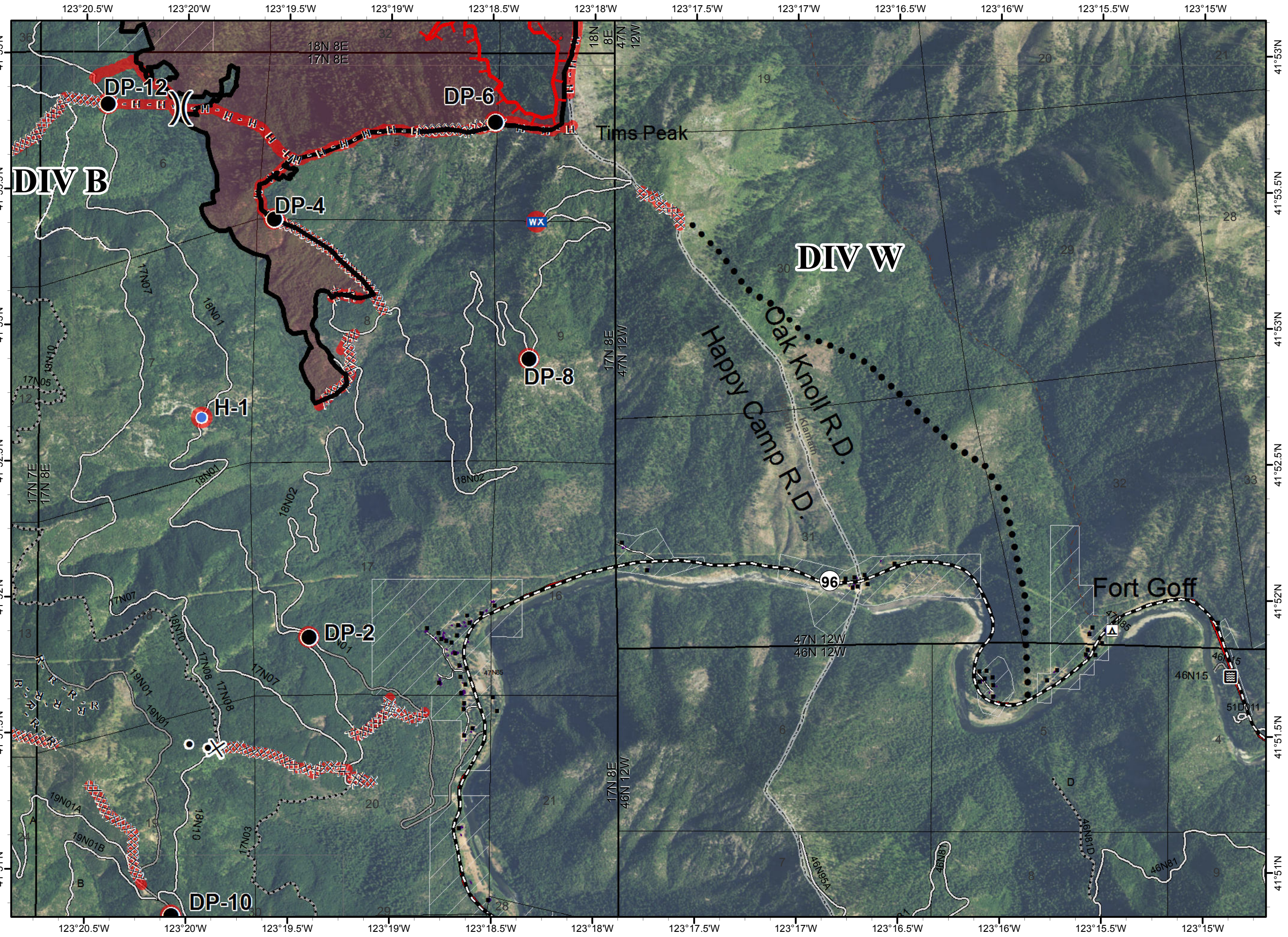
ECLIPSE COMPLEX
 CA-KNF-006098
 SEPTEMBER 19 2017
 IAP MAP
 BRANCH I & II

Page 9 of 17

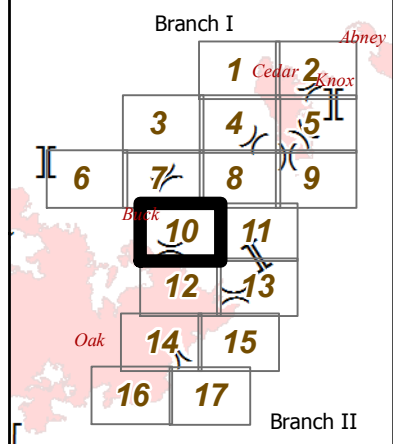
- Division
- Branch
- Drop Point
- Helispot
- Mobile Weather Unit
- Uncontrolled Fire Edge
- Planned Fire Edge
- Secondary Line
- Completed Dozer Line
- Completed Line
- Proposed Dozer Line
- Hand Line
- Road as Completed Line
- Proposed Dozer Line
- Ranger District Boundary
- Fire Perimeter
- Ownership Private
- Repair Needed
- Repair Needed



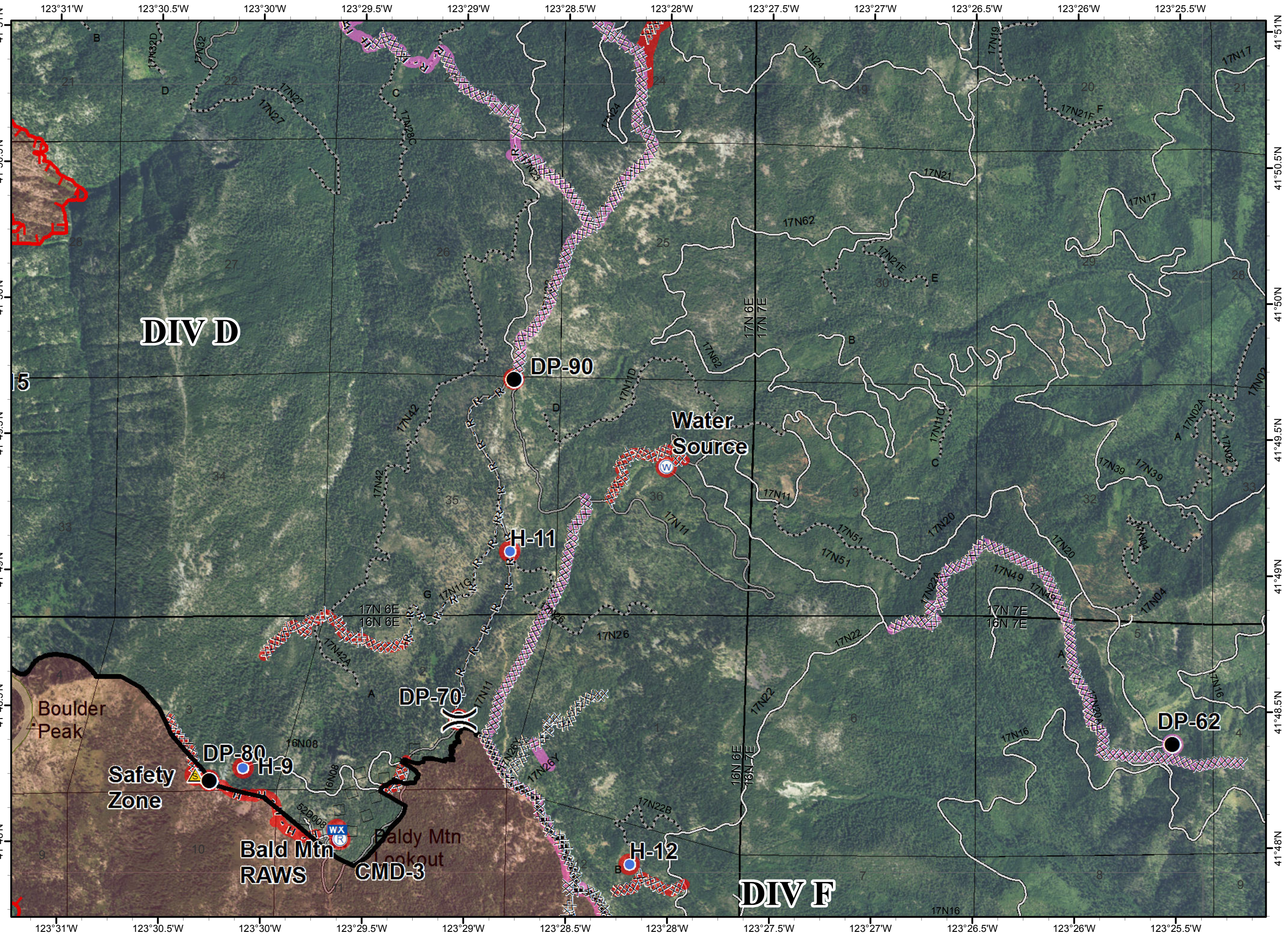
NAD 1983 UTM zone 10N



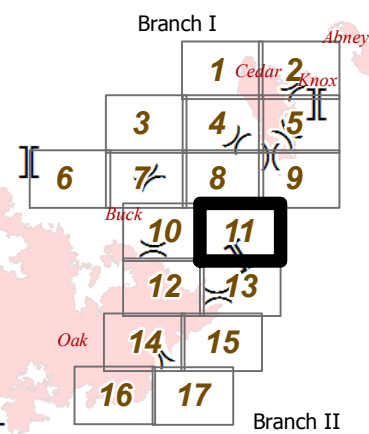
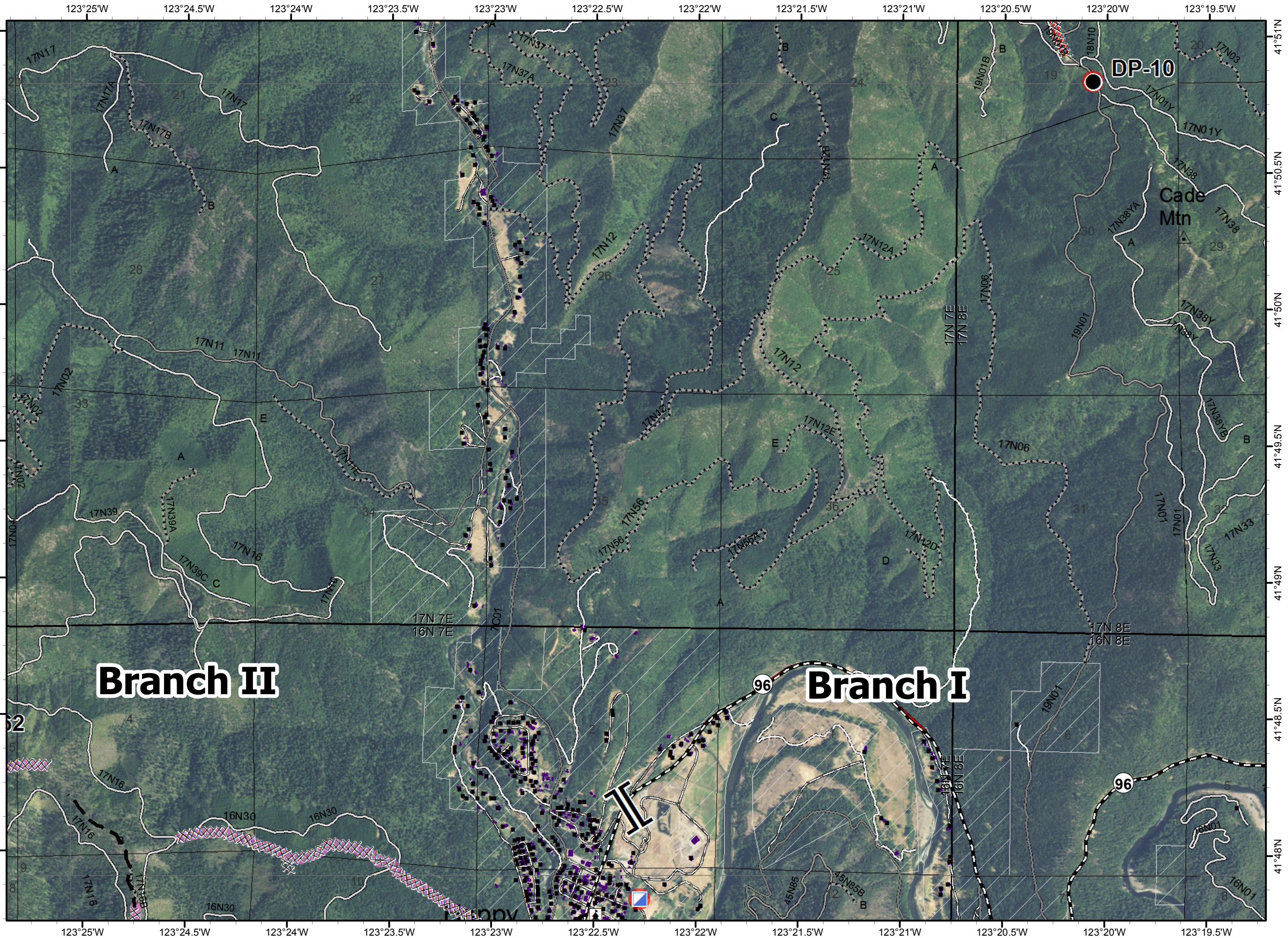
- () Division
- [] Branch
- Drop Point
- Helispot
- WX Mobile Weather Unit
- Ⓡ Repeater
- ⚠ Safety Zone
- Ⓜ Water Source
- Uncontrolled Fire Edge
- ◇ Aerial Retardant Drop
- XXXX Completed Dozer Line
- Completed Line
- H Hand Line
- R Road as Completed Line
- Planned Fire Line
- ▭ Ranger District Boundary
- ▭ Fire Perimeter
- ▭ Wilderness
- Ready to be Worked On
- Repair Needed
- ▭ Ready to be Worked On
- ▭ Repair Needed



NAD 1983 UTM zone 10N



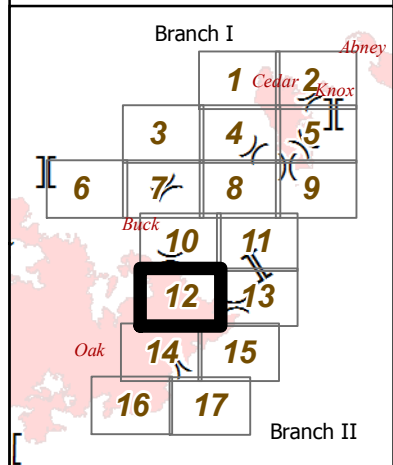
- Division
- District Boundary
- Ownership Private
- Drop Point
- Repair Needed
- Ready to be Worked On
- Repair Needed
- Incident Command Post
- Completed Dozer Line
- Planned Fire Line



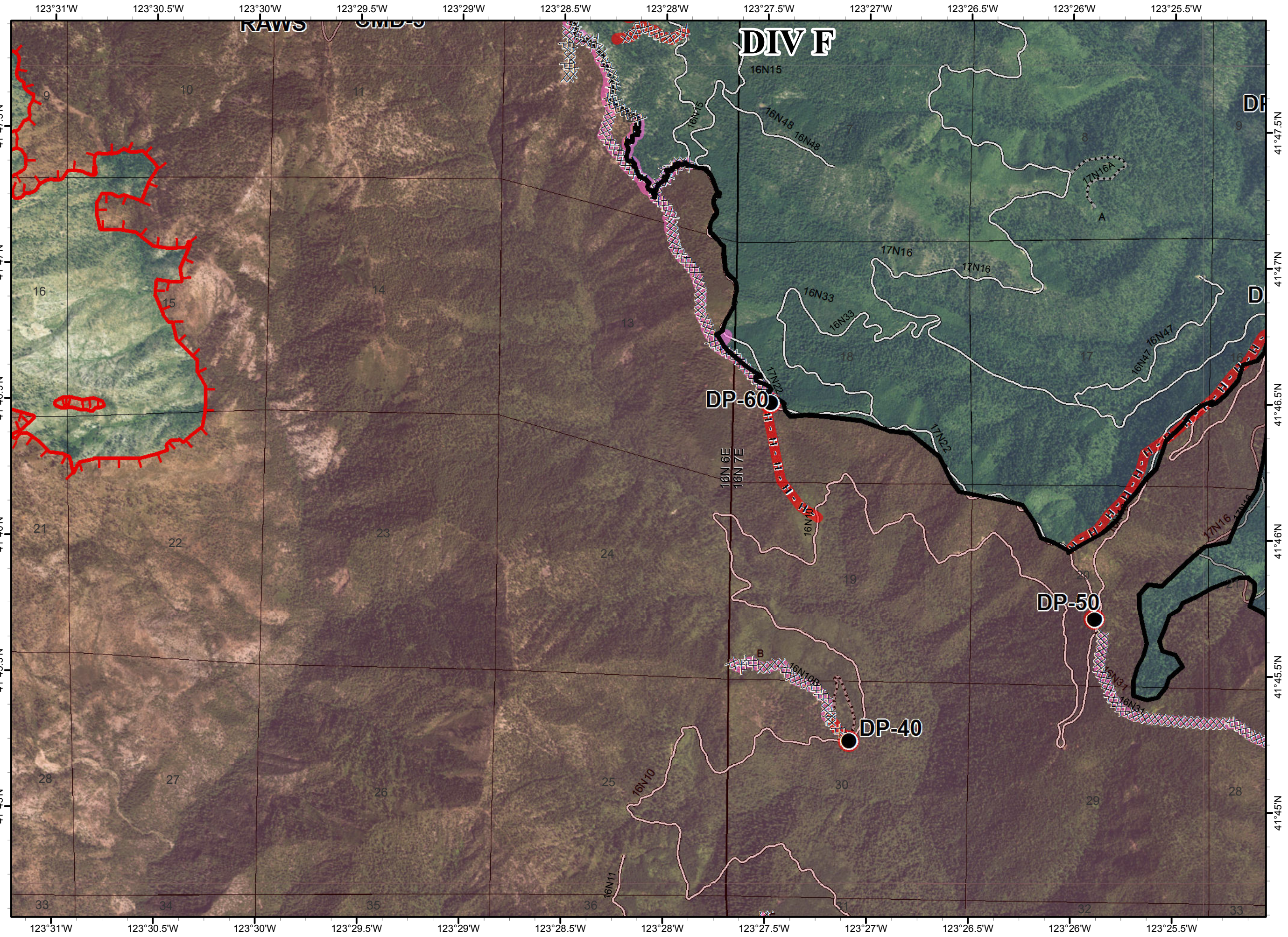
This block contains several elements:

- Logos:** The U.S. Forest Service logo (left) and the Southern California Fire logo (right).
- Compass Rose:** A circular compass rose showing North (N), South (S), East (E), and West (W).
- Scale Bar:** A horizontal bar with markings for 0, 0.2, and 0.4 miles.
- Text:** 'NAD 1983 UTM zone 10N' is printed at the bottom.

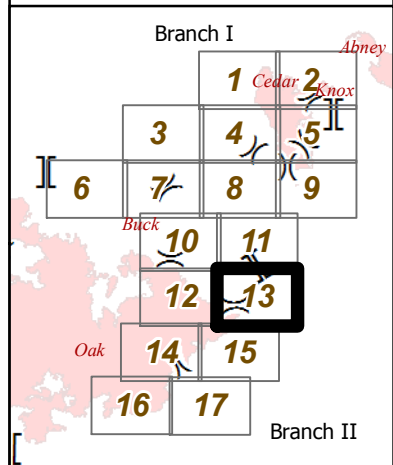
- () Division
- [] Branch
- Drop Point
- Uncontrolled Fire Edge
- XXXX Completed Dozer Line
- Completed Line
- H - Hand Line
- ▭ Ranger District Boundary
- Fire Perimeter
- Repair Needed
- Ready to be Worked On
- Repair Needed



NAD 1983 UTM zone 10N

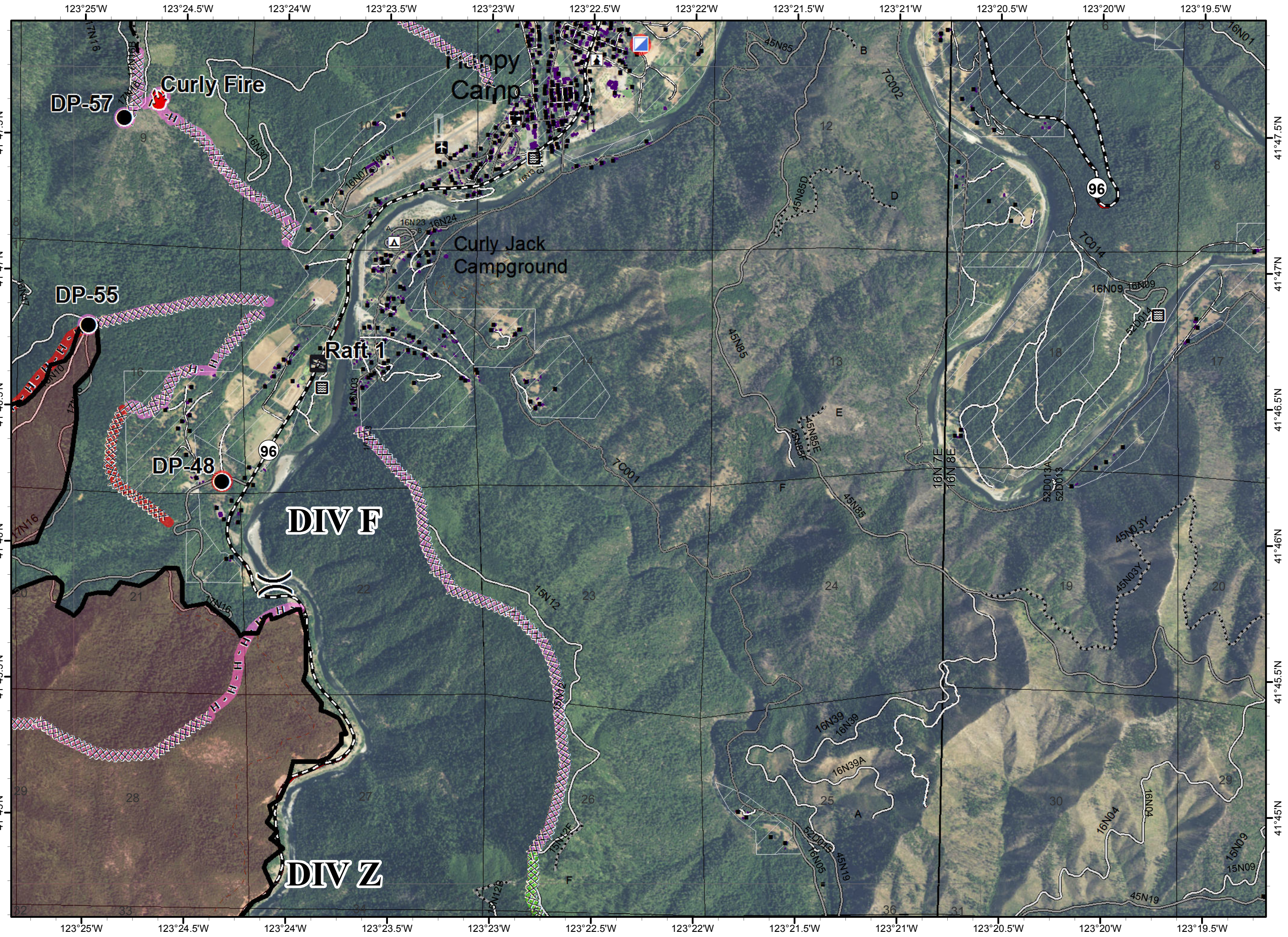


- Division
- Branch
- Boat Ramp
- Drop Point
- Fire Location
- Incident Command Post
- Completed Dozer Line
- Completed Line
- Hand Line
- Planned Fire Line
- Ranger District Boundary
- Fire Perimeter
- Ownership Private
- Ready to be Worked On
- Repair Needed
- Completed - Inspected
- Ready to be Worked On
- Repair Needed



0 0.2 0.4 Miles

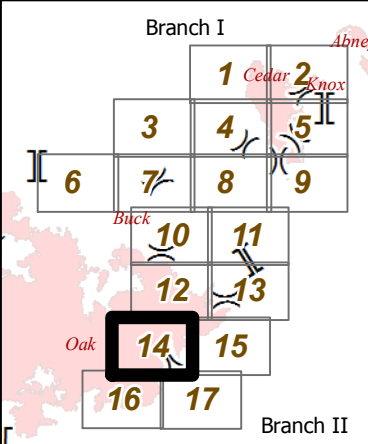
NAD 1983 UTM zone 10N



ECLIPSE COMPLEX
 CA-KNF-006098
 SEPTEMBER 19 2017
 IAP MAP
 BRANCH I & II

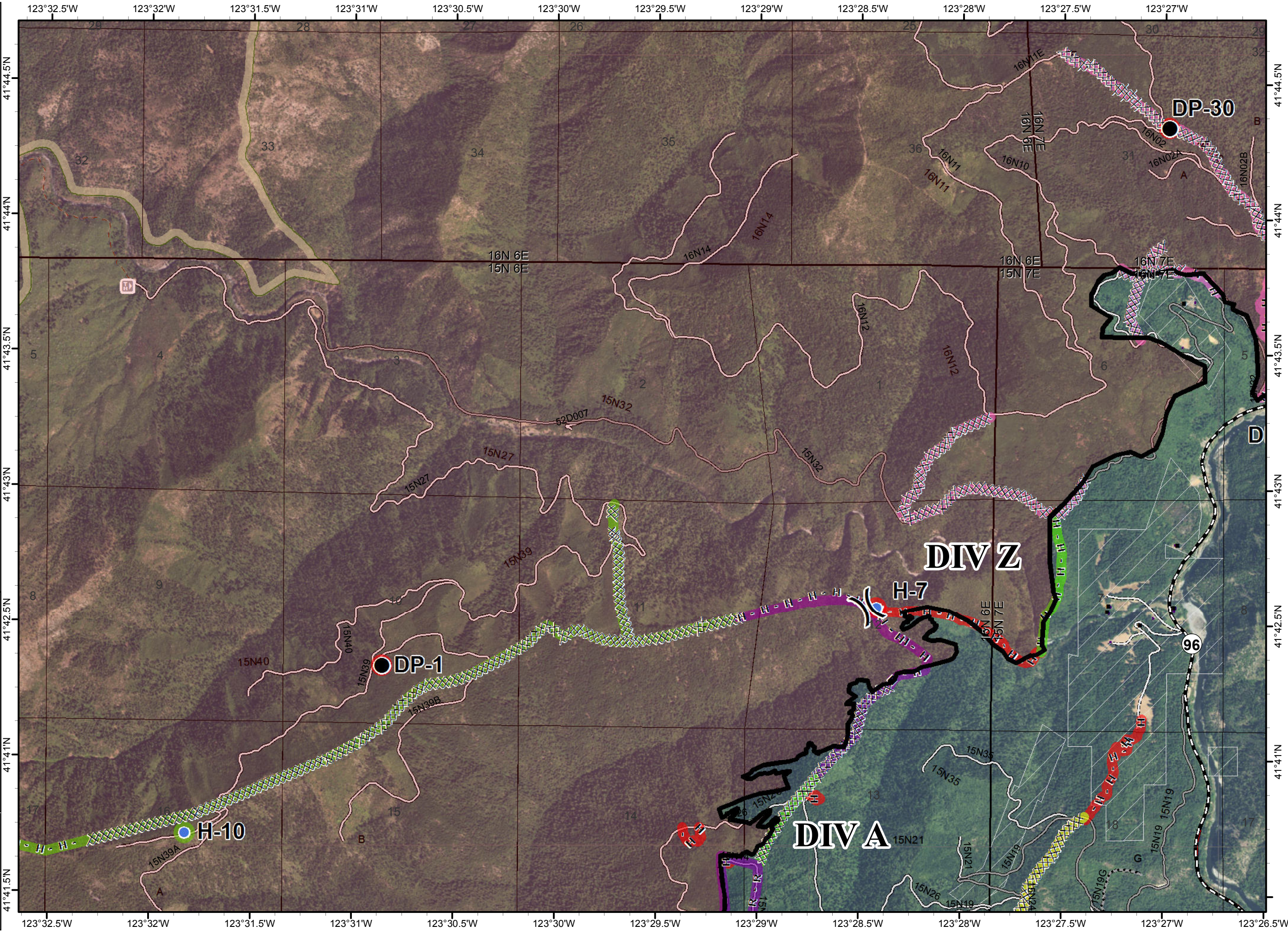
Page 14 of 17

- () Division
- [] Branch
- Drop Point
- Helispot
- XXXX Completed Dozer Line
- Completed Line
- H - Hand Line
- R - Road as Completed Line
- ▭ Ranger District Boundary
- Fire Perimeter
- ▭ Wilderness
- ▭ Ownership Private
- Completed - Inspected
- Repair Needed
- Completed - Inspected
- In Progress
- Ready to be Worked On
- Repair Needed
- Unknown

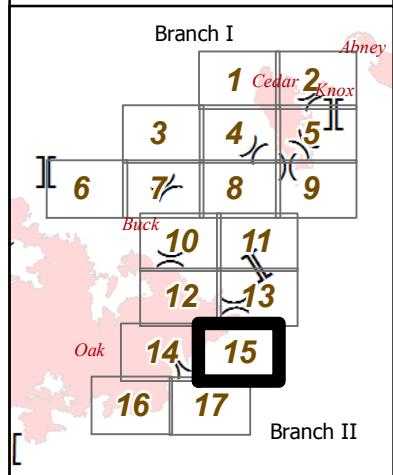
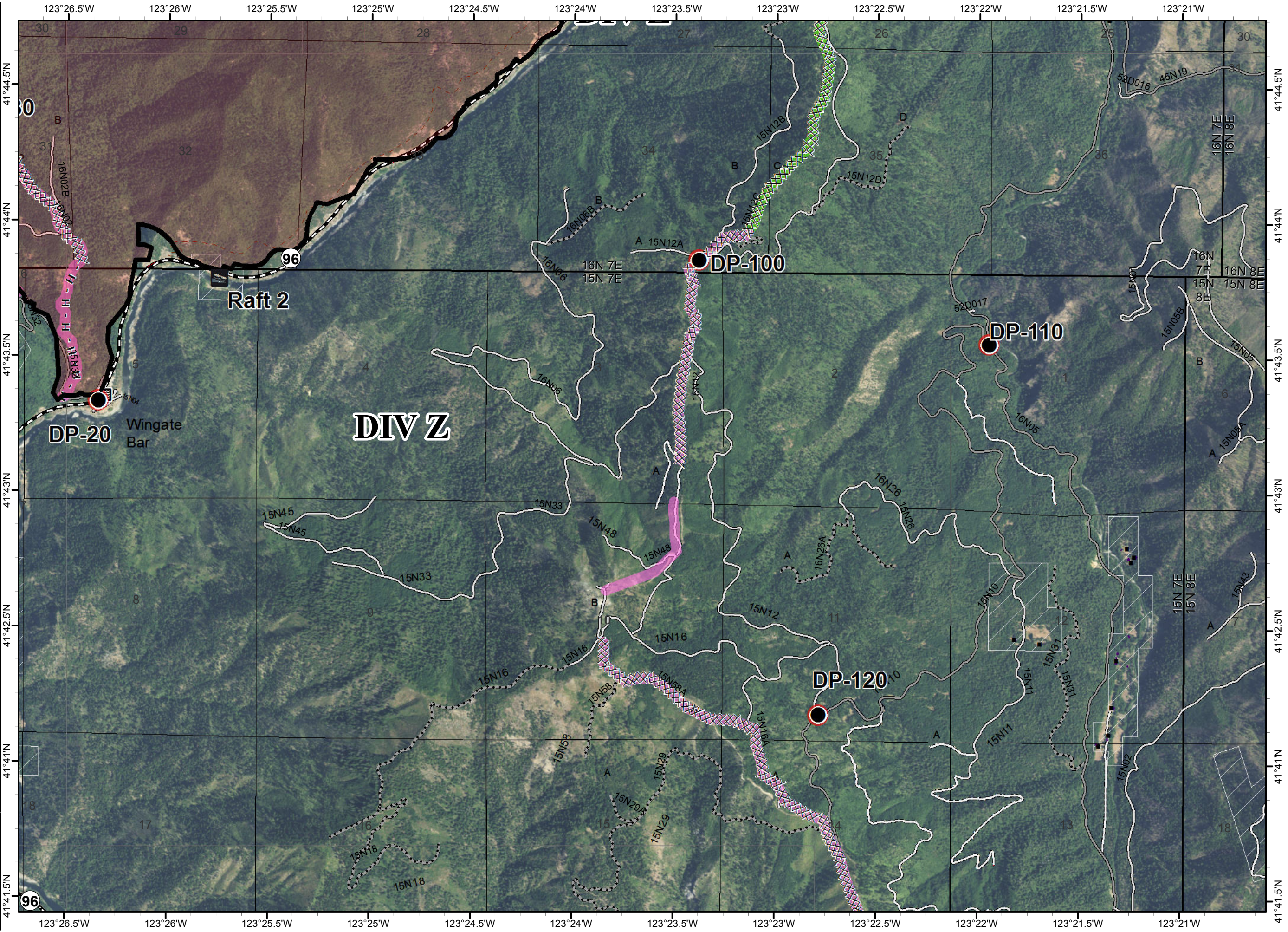


0 0.2 0.4 Miles

NAD 1983 UTM zone 10N



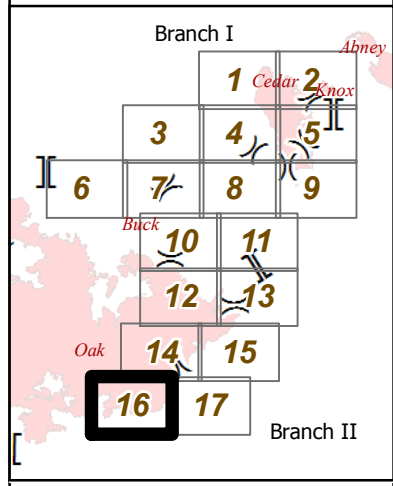
- () Division
- ▭ Ranger District Boundary
- || Branch
- 🚤 Boat Ramp
- Drop Point
- XXXX Completed Dozer Line
- Completed Line
- H - Hand Line
- ▭ Fire Perimeter
- ▭ Ownership Private
- Repair Needed
- Completed - Inspected
- Ready to be Worked On



0 0.2 0.4 Miles

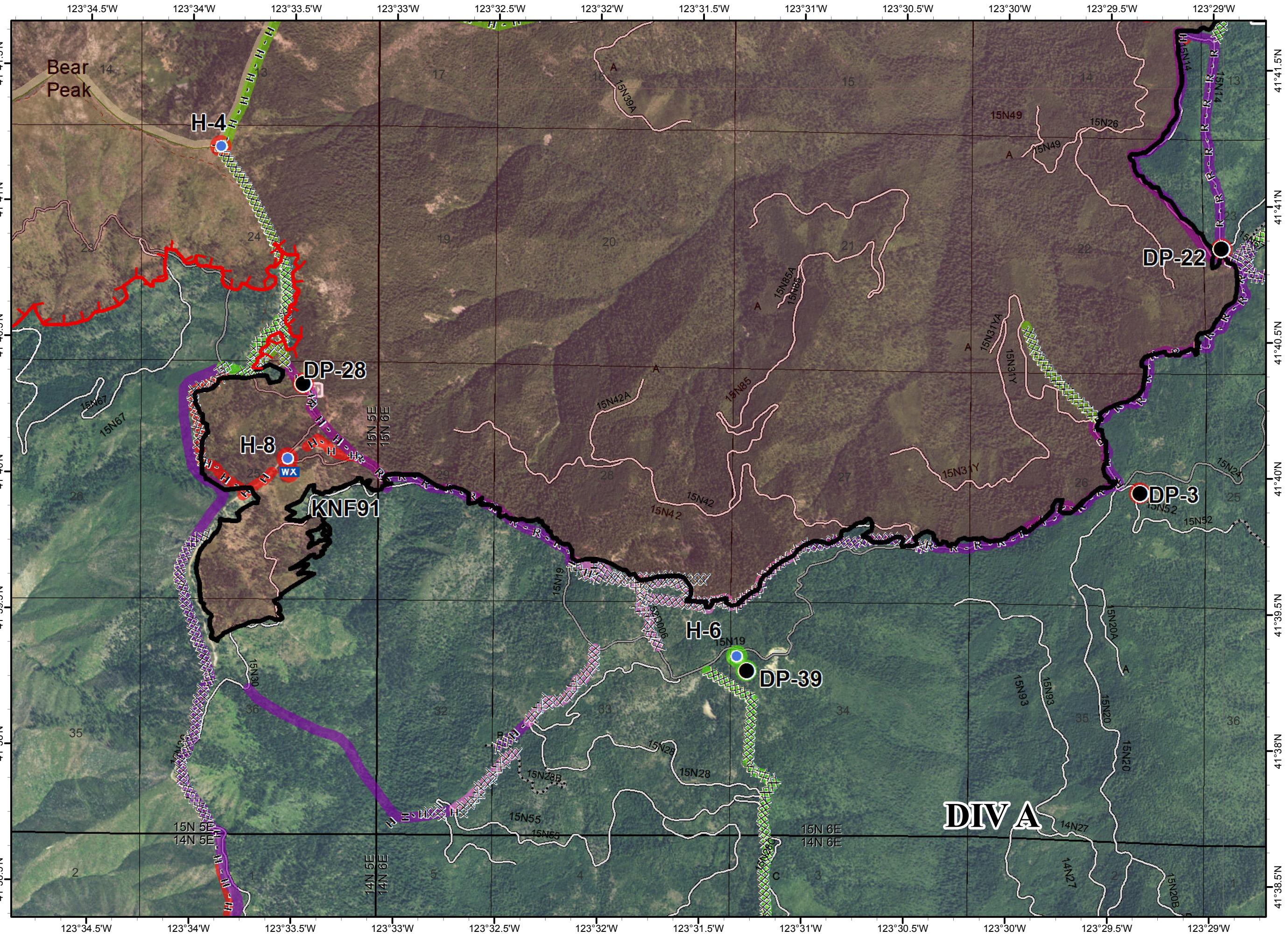
NAD 1983 UTM zone 10N

- () Division
- [] Branch
- Drop Point
- Helispot
- WX Mobile Weather Unit
- Uncontrolled Fire Edge
- XXXX Completed Dozer Line
- Completed Line
- H - Hand Line
- R - Road as Completed Line
- ▭ Ranger District Boundary
- ▭ Fire Perimeter
- ▭ Wilderness
- Completed - Inspected
- Repair Needed
- ▭ Completed - Inspected
- ▭ Ready to be Worked On
- ▭ Repair Needed
- ▭ Unknown



0 0.2 0.4 Miles

NAD 1983 UTM zone 10N



- () Division
- ▭ Ranger District Boundary
- ▭ Branch
- Drop Point
- ▨ Completed Dozer Line
- ▬ Completed Line
- R - Completed Line
- ▭ Fire Perimeter
- ▭ Ownership Private
- Repair Needed
- ▬ Completed - Inspected
- ▬ In Progress
- ▬ Unknown

