

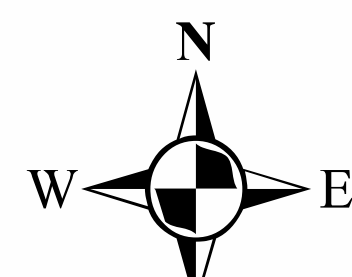
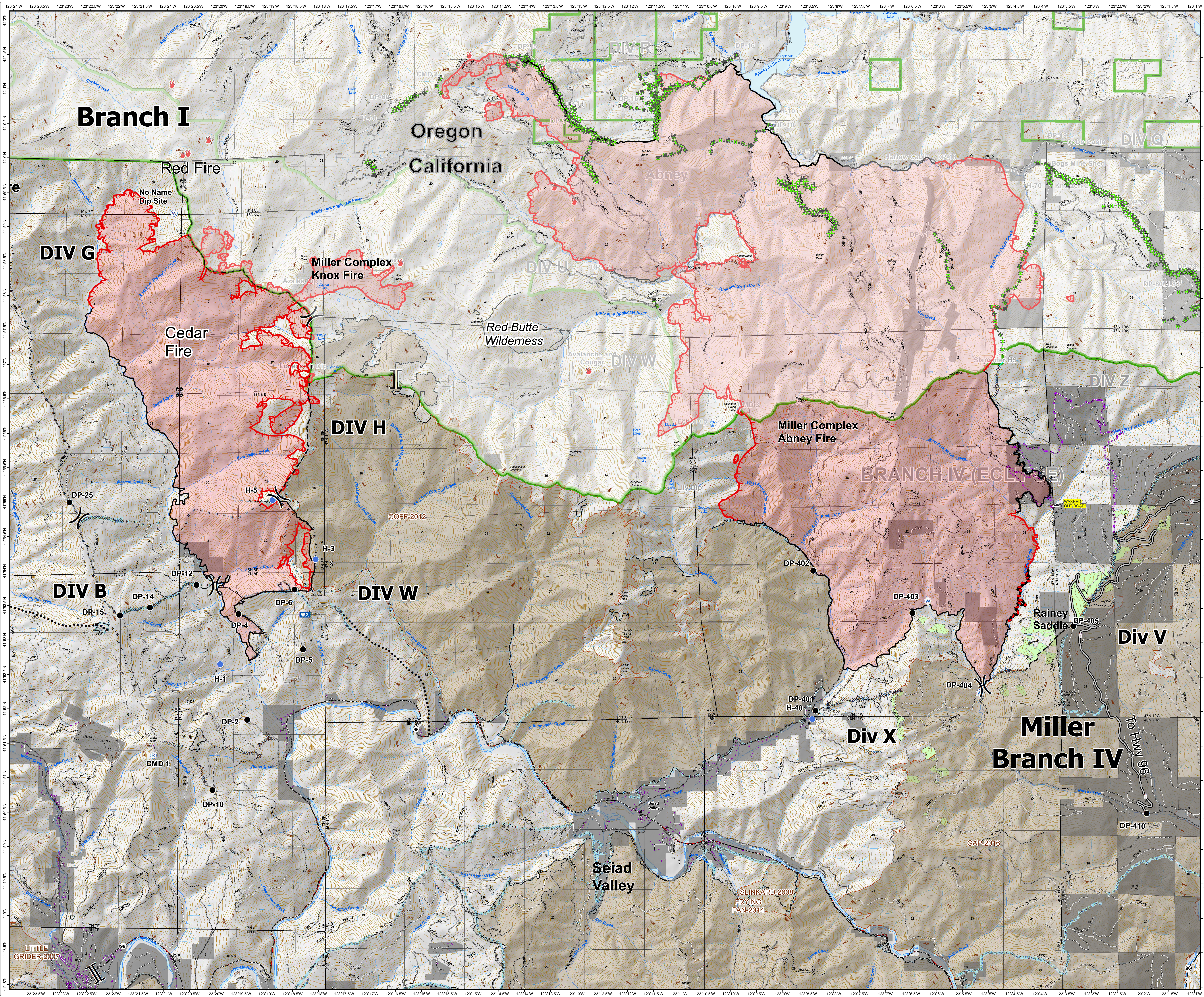


ECLIPSE COMPLEX
CA-KNF 006098

SEPTEMBER 21 2017
OPERATIONS
DAY SHIFT

BRANCH I & IV

- () Division
- [] Branch
- IC Incident Command Post
- C Camp
- Drop Point
- 🔥 Fire Location
- ⊕ Helibase
- ⊙ Helispot
- 👁 Lookout
- WX Mobile Weather Unit
- Ⓡ Repeater
- ⚠ Safety Zone
- W Water Source
- ⊘ Restricted Water Source
- 🚣 Raft Landing
- 🛣 Road Washout
- Uncontrolled Fire Edge
- ⊗ Completed Dozer Line
- Completed Line
- Hand Line
- Road as Completed Line
- ◇ Aerial Retardant Drop
- Planned Fire Line
- ⋯ Planned Secondary Line
- ⊗ Proposed Dozer Line
- (XXXX) Ridge / Geographic Feature
- Containment Line
- Miller Completed Line
- ⊗ Miller Completed Dozer Line
- Miller Completed Hand Line
- Miller Road as Completed Line
- 000000 Past Ridge/Geographic Feature
- ⋯ Past Highlighted Man Made Feature
- Past Hand Line
- ⊗ Past Completed Dozer Line
- Past Completed Line
- Wilderness
- Forest Service Admin Boundary
- Fire Perimeter
- Structures
- Old Fire Scar
- Contract Units



0 0.5 1 Miles

80 Foot Contours
1:30,000