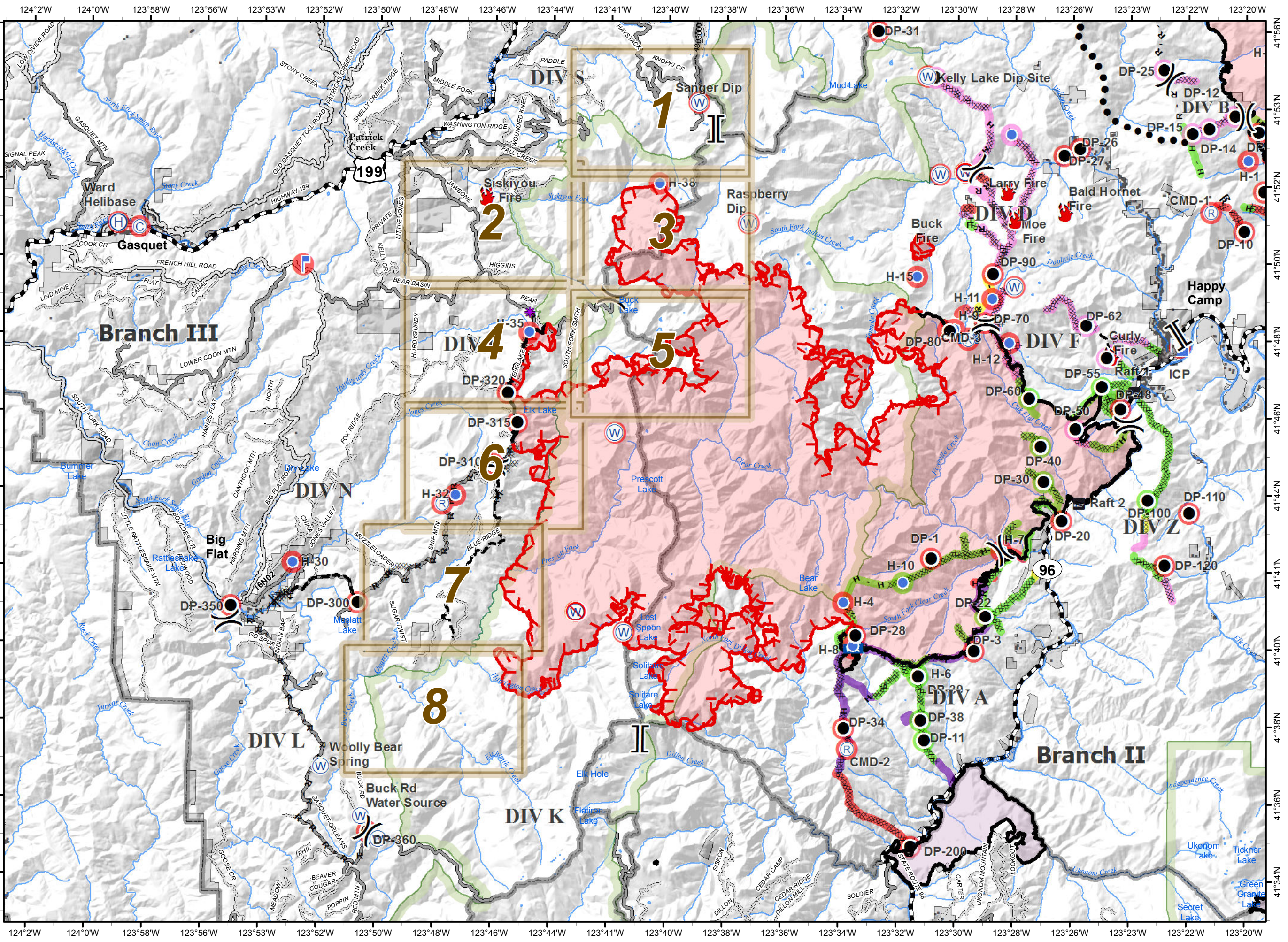


ECLIPSE COMPLEX
CA-KNF-006098
SEPTEMBER 24-27 2017

IAP MAP BRANCH III

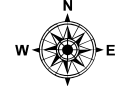
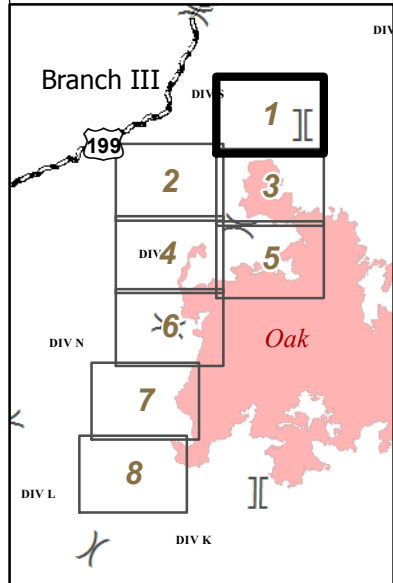
Index

- IAP Tiles Branch III
- Fire Perimeter
- Wilderness
- Ownership Private
- Drop Point
- Restricted Water Source
- Water Source
- Safety Zone
- Camp
- Fire Location
- Helibase
- Helispot
- ICP
- Lookout
- RAWS
- Repeater
- Raft Ramp
- Road Washout
- Division
- Branch
- Uncontrolled Fire Edge
- Ridge / Geographic Feature
- Aerial Retardant Drop
- Planned Secondary Line
- Completed Dozer Line
- Completed Line
- Planned Fire Line
- Proposed Dozer Line
- Completed - Inspected
- Ready to be Worked On
- Repair Needed
- Completed - Inspected
- In Progress
- Ready to be Worked On
- Repair Needed
- Unknown



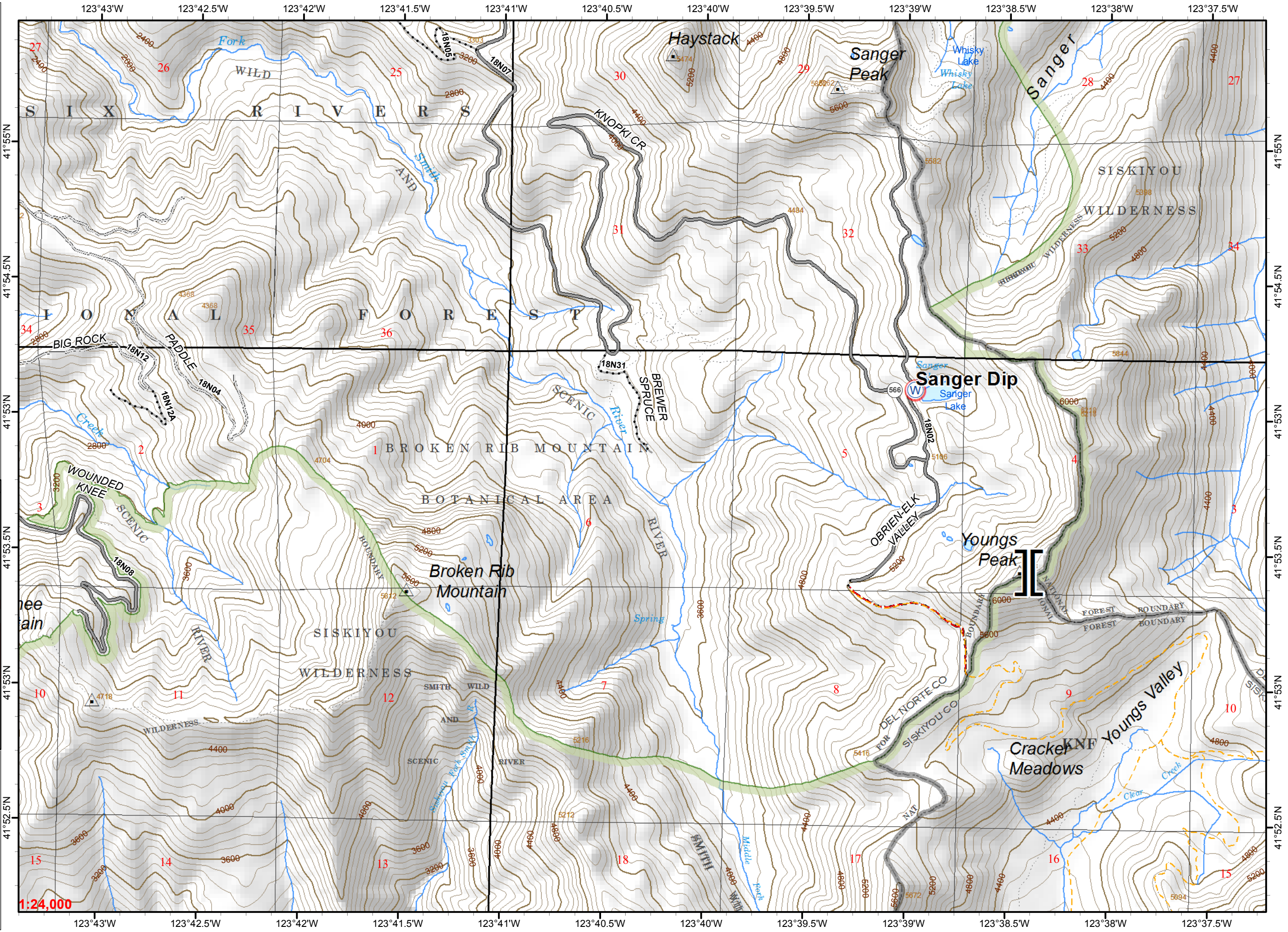
0 1 2 Miles
NAD 1983 UTM zone 10N

- Division
- Branch
- Water Source
- Ranger District Boundary
- Wilderness
- Ownership Private
- Repair Needed



0 0.2 0.4 Miles

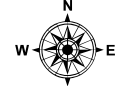
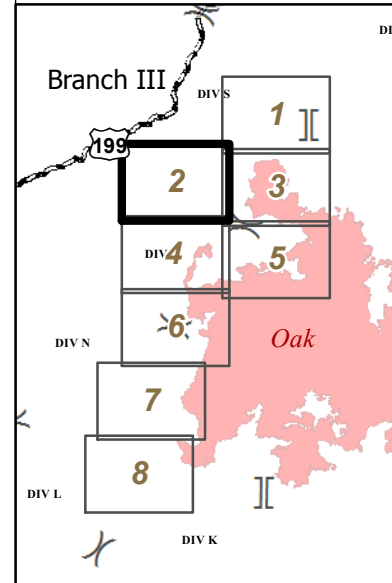
NAD 1983 UTM zone 10N



IAP MAP
BRANCH III

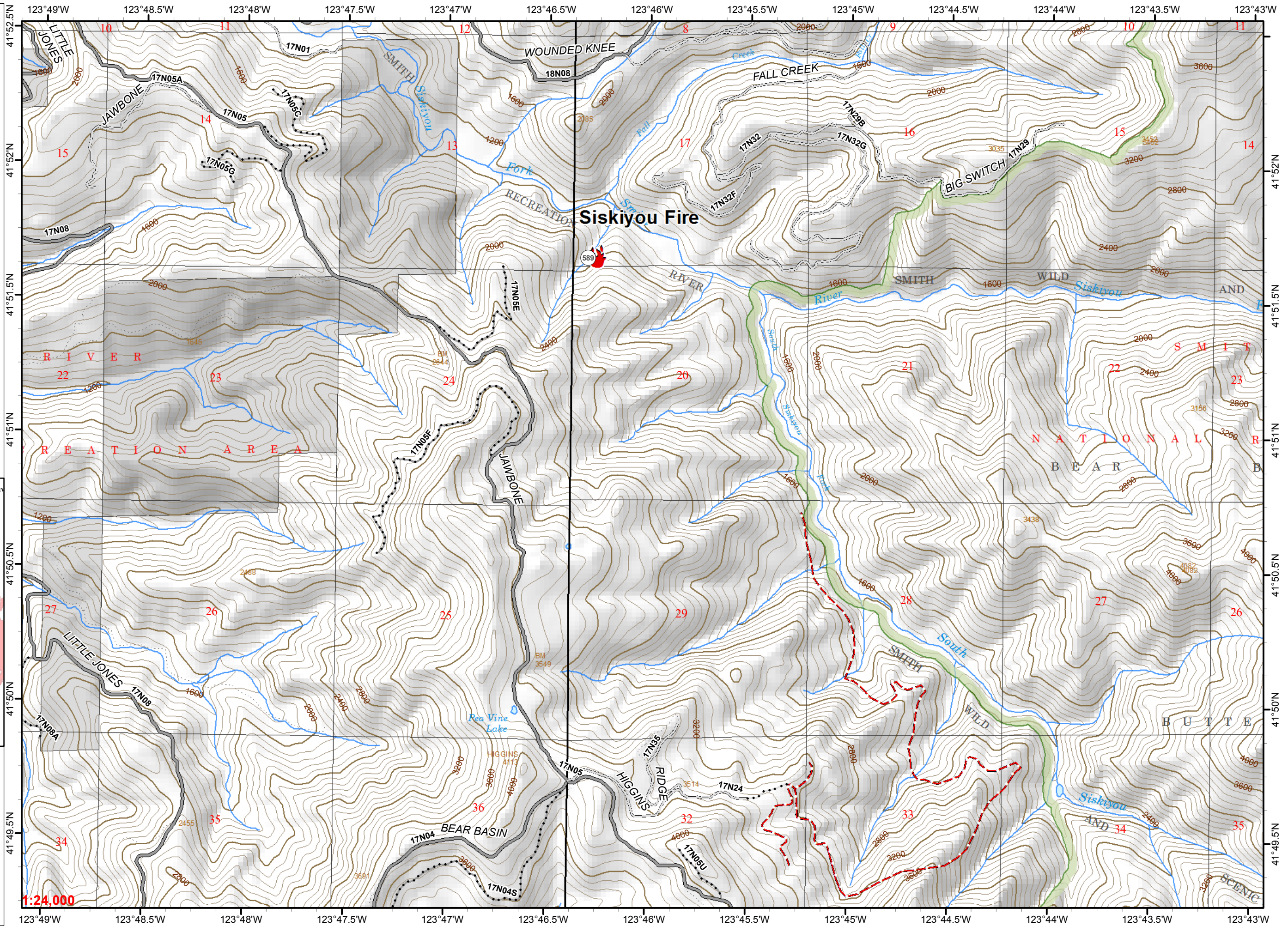
Page 2 of 8

- Division
- Branch
- Fire Location
- Ranger District Boundary
- Wilderness
- Ownership Private



0 0.2 0.4 Miles

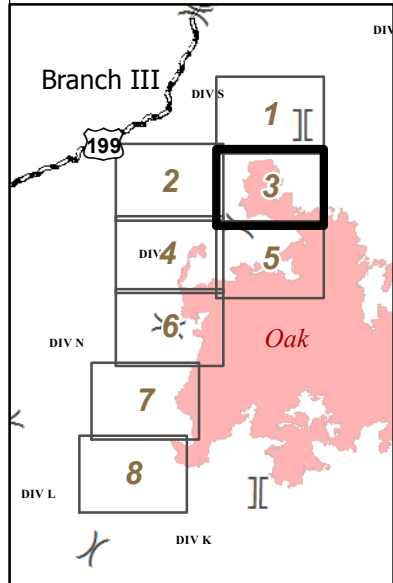
NAD 1983 UTM zone 10N



IAP MAP
BRANCH III

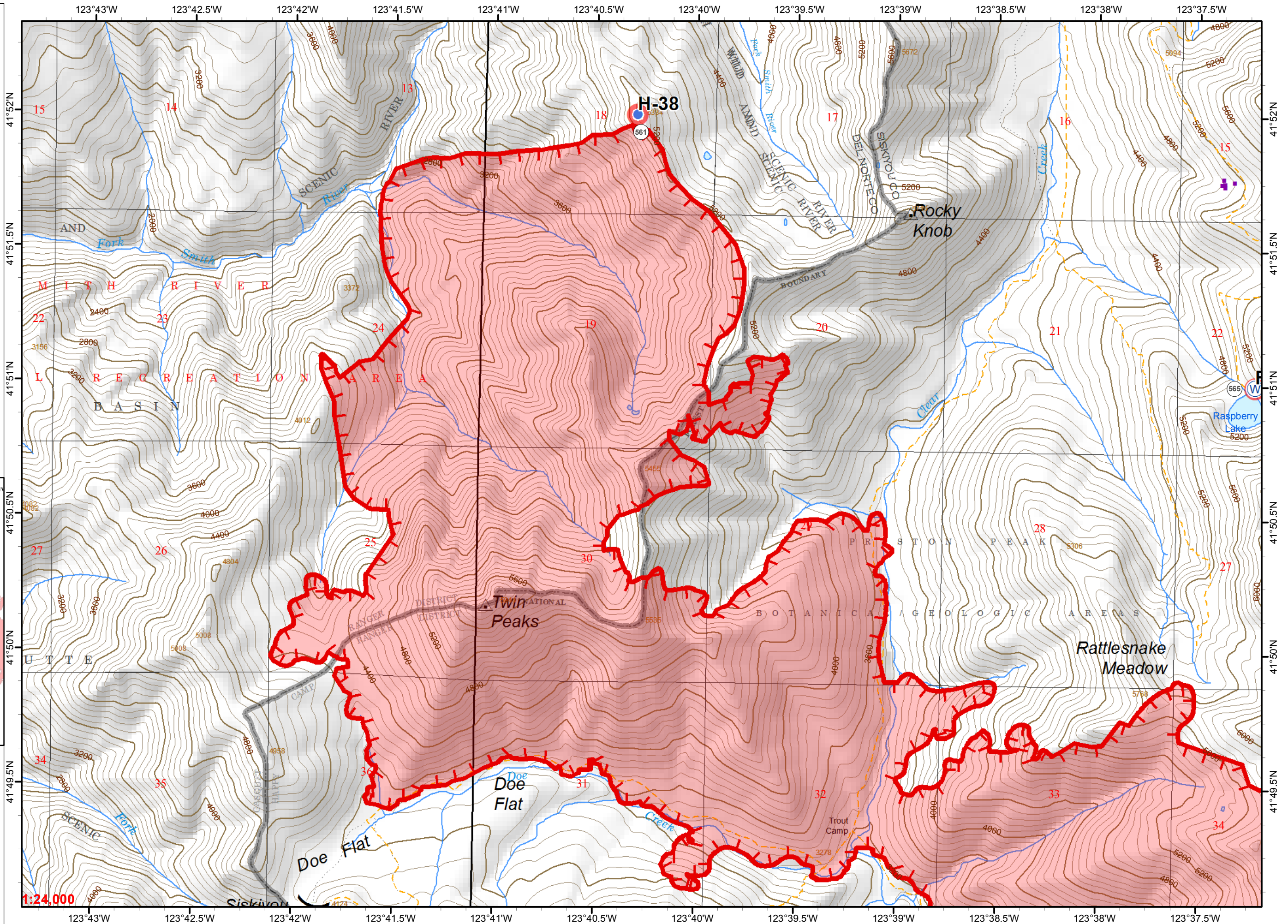
Page 3 of 8

- Division
- Branch
- Helispot
- Water Source
- Uncontrolled Fire Edge
- Ranger District Boundary
- Fire Perimeter
- Wilderness
- Ownership Private
- Repair Needed



0 0.2 0.4 Miles

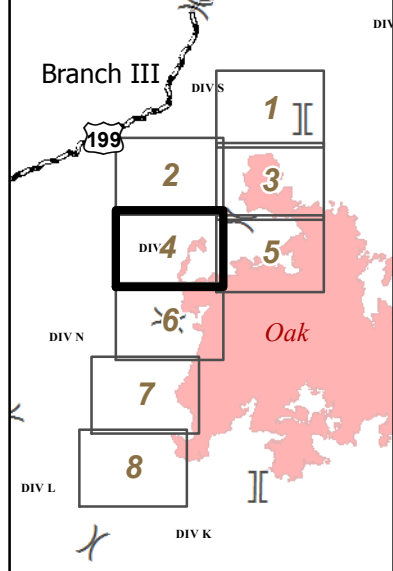
NAD 1983 UTM zone 10N



IAP MAP
BRANCH III

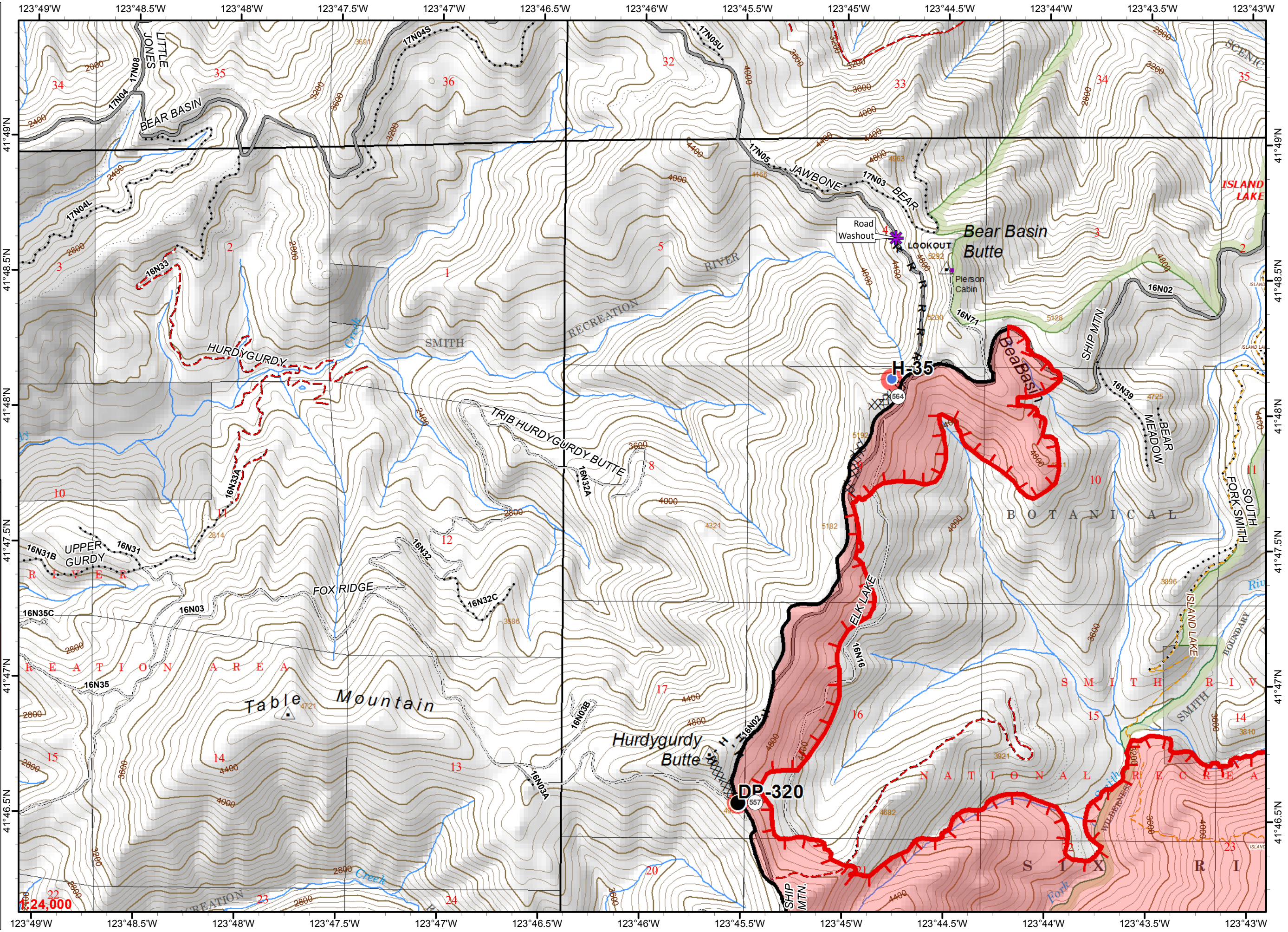
Page 4 of 8

- Division
- Branch
- Drop Point
- Helispot
- Uncontrolled Fire Edge
- Completed Dozer Line
- Completed Line
- H - Hand Line
- Road as
- R - Completed Line
- Ranger District Boundary
- Fire Perimeter
- Wilderness
- Ownership Private
- Road Washout
- Repair Needed



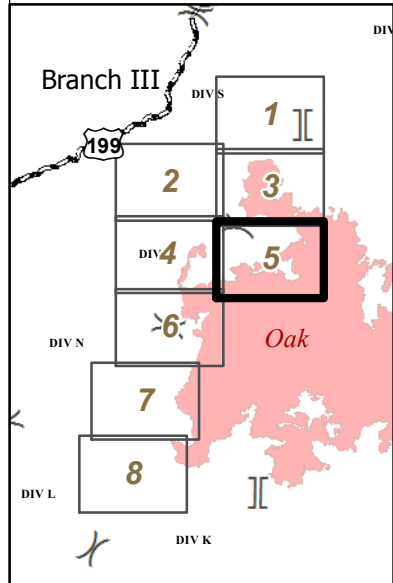
0 0.2 0.4 Miles

NAD 1983 UTM zone 10N



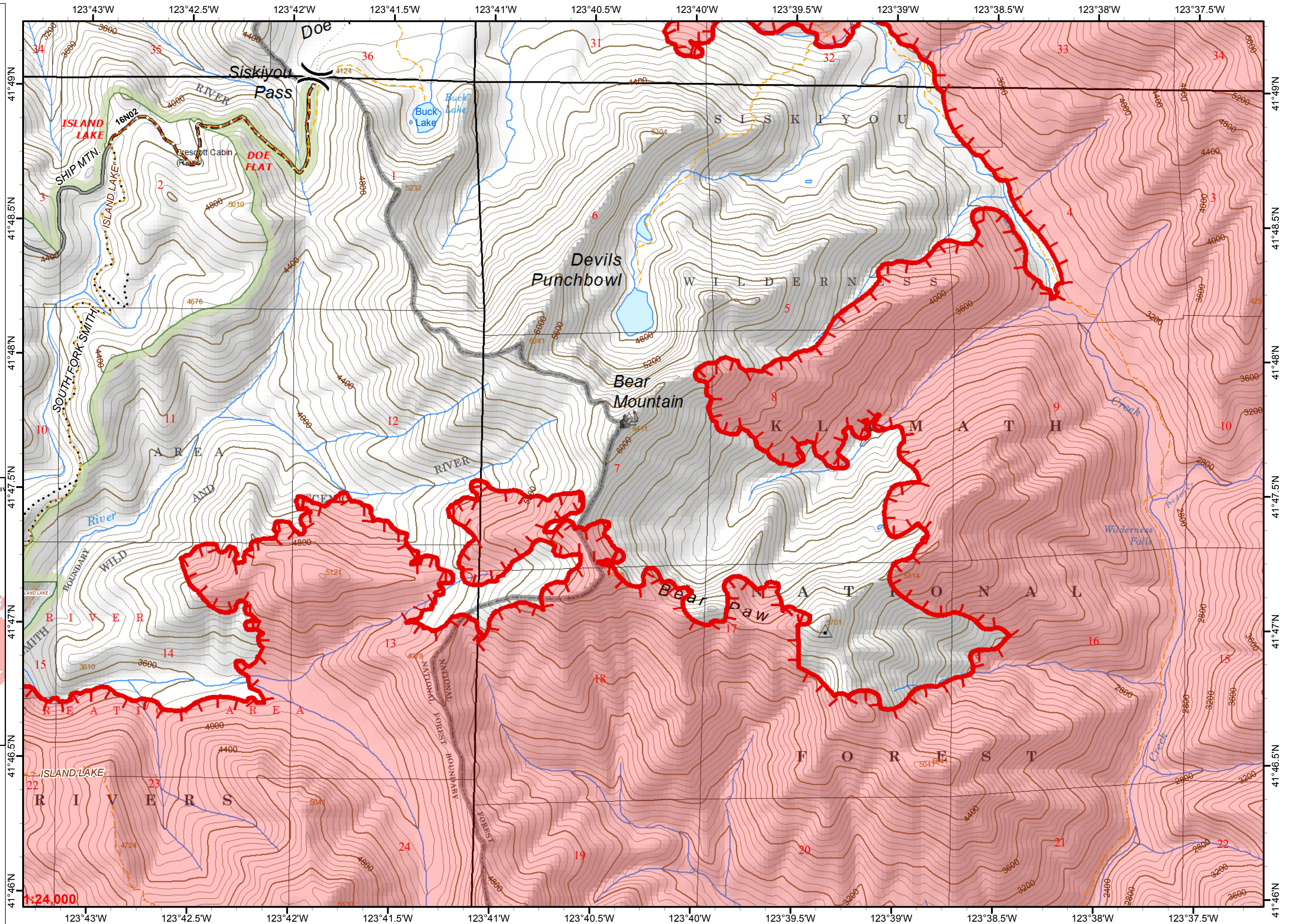
IAP MAP
BRANCH III

- Division
- Branch
- Uncontrolled Fire Edge
- Ranger District Boundary
- Fire Perimeter
- Wilderness
- Ownership Private






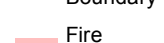

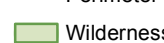







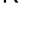

0 0.2 0.4 Miles

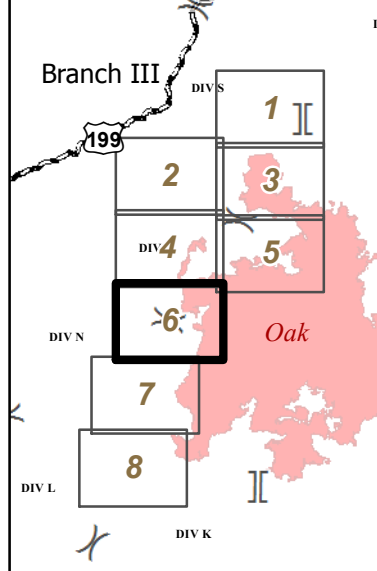


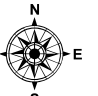
NAD 1983 UTM zone 10N



IAP MAP
 BRANCH III

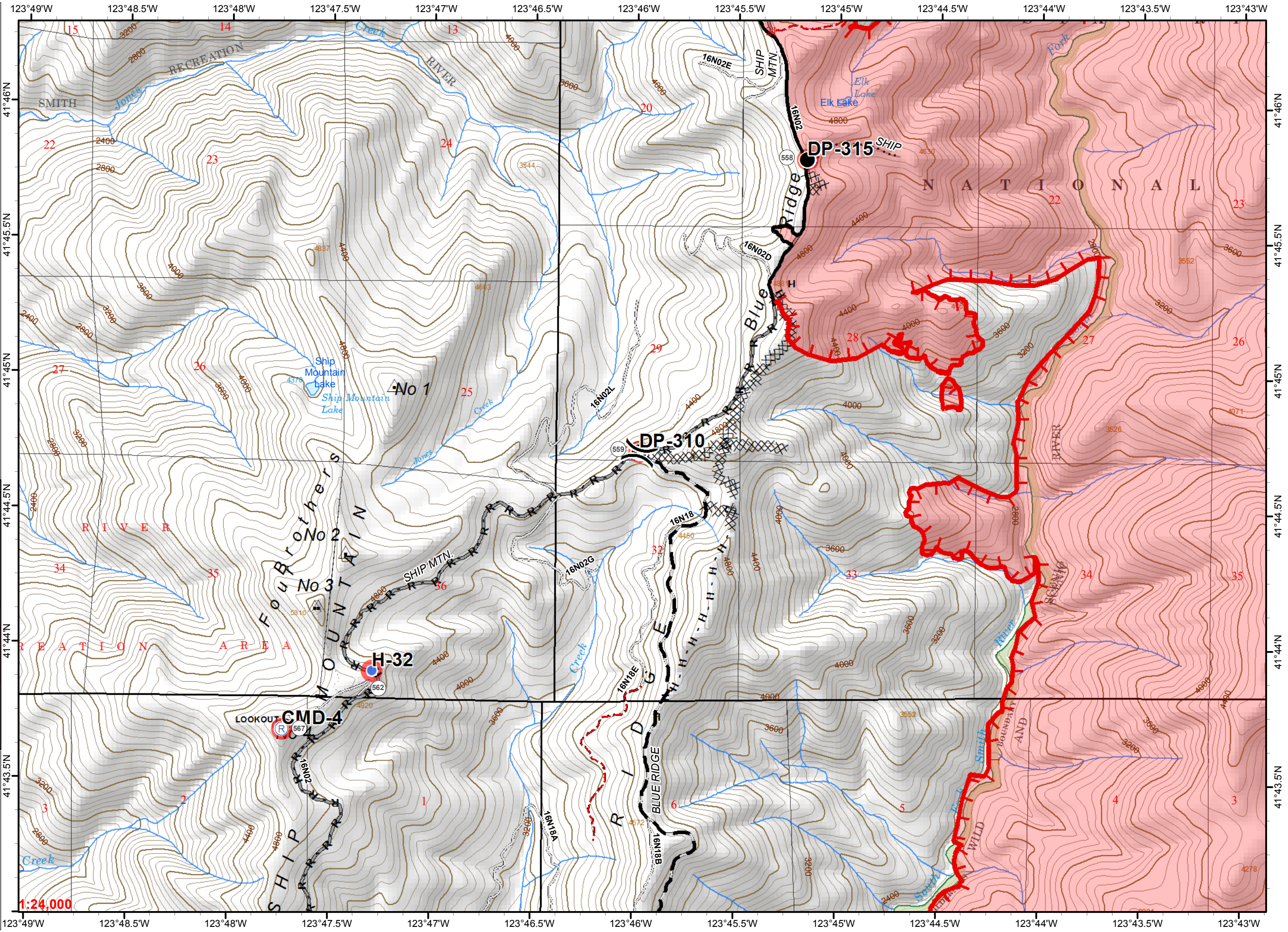
Page 6 of 8

-  Division
-  Ranger District Boundary
-  Branch
-  Fire Perimeter
-  Drop Point
-  Wilderness
-  Helispot
-  Repair Needed
-  Repeater
-  Uncontrolled Fire Edge
-  Completed Dozer Line
-  Completed Line
-  Hand Line
-  Road as Completed Line
-  Planned Fire Line

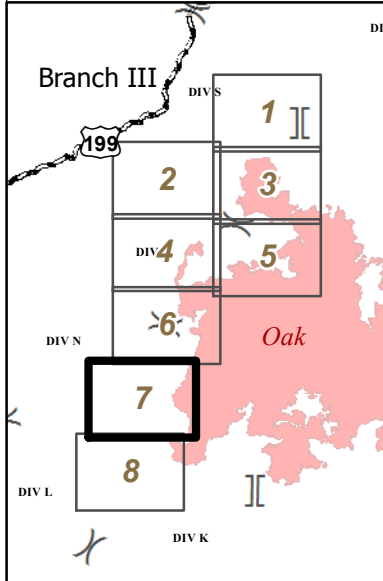
0 0.2 0.4 Miles

NAD 1983 UTM zone 10N



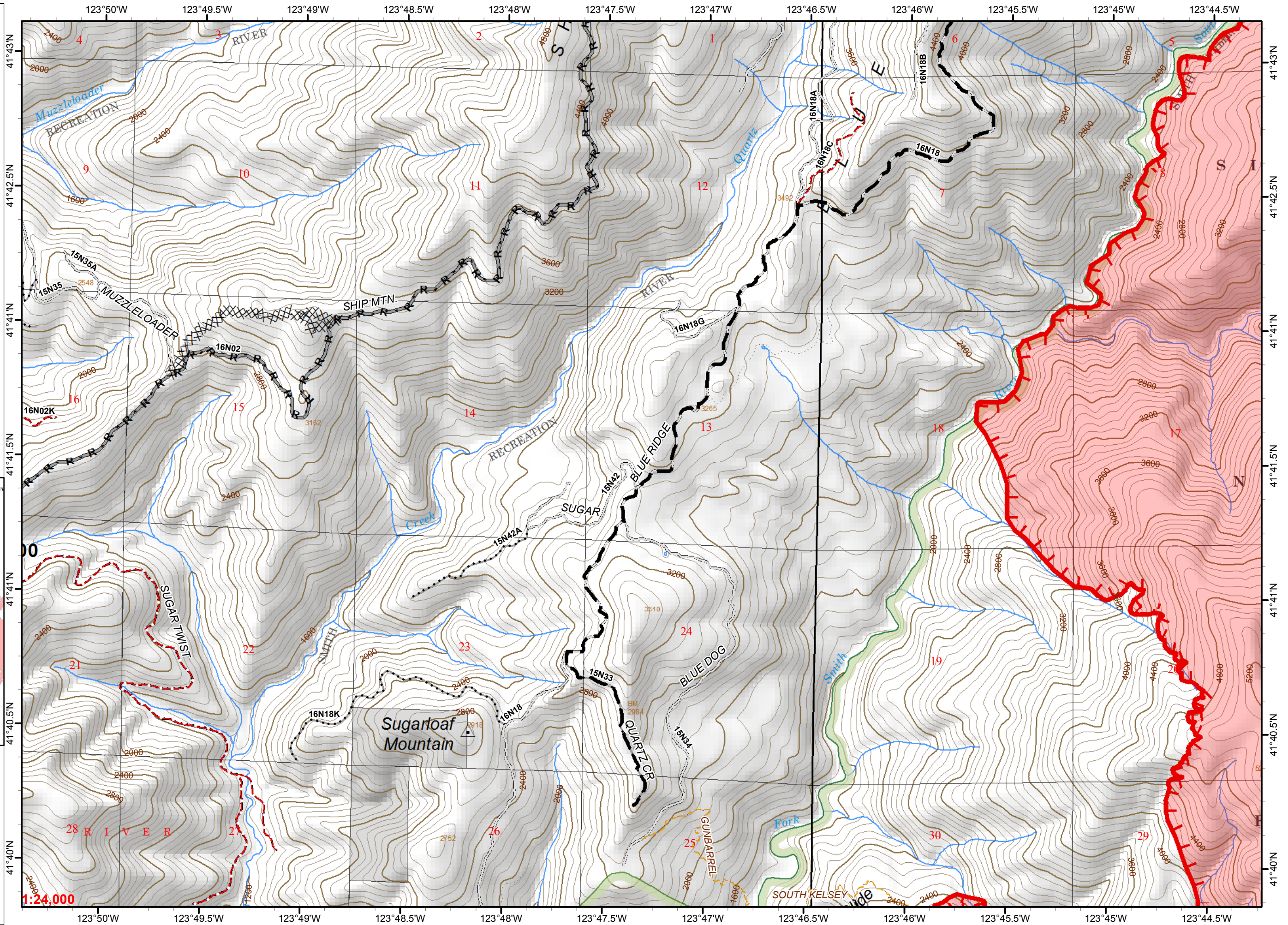
IAP MAP
BRANCH III

- Division
- Branch
- Uncontrolled Fire Edge
- Completed Dozer Line
- Road as Completed Line
- Planned Fire Line
- Ranger District Boundary
- Fire Perimeter
- Wilderness
- Ownership Private



0 0.2 0.4 Miles

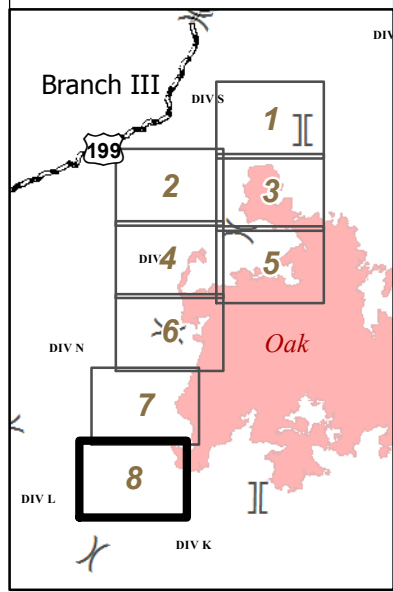
NAD 1983 UTM zone 10N



IAP MAP
BRANCH III

Page 8 of 8

- (X) Division
- (II) Branch
- Uncontrolled Fire Edge
- Ranger District Boundary
- Fire Perimeter
- Wilderness
- Ownership Private



0 0.2 0.4 Miles

NAD 1983 UTM zone 10N

