




ECLIPSE COMPLEX
 CA-KNF-006098
 SEPTEMBER 24-27 2017

IAP MAP
 BRANCH I & II

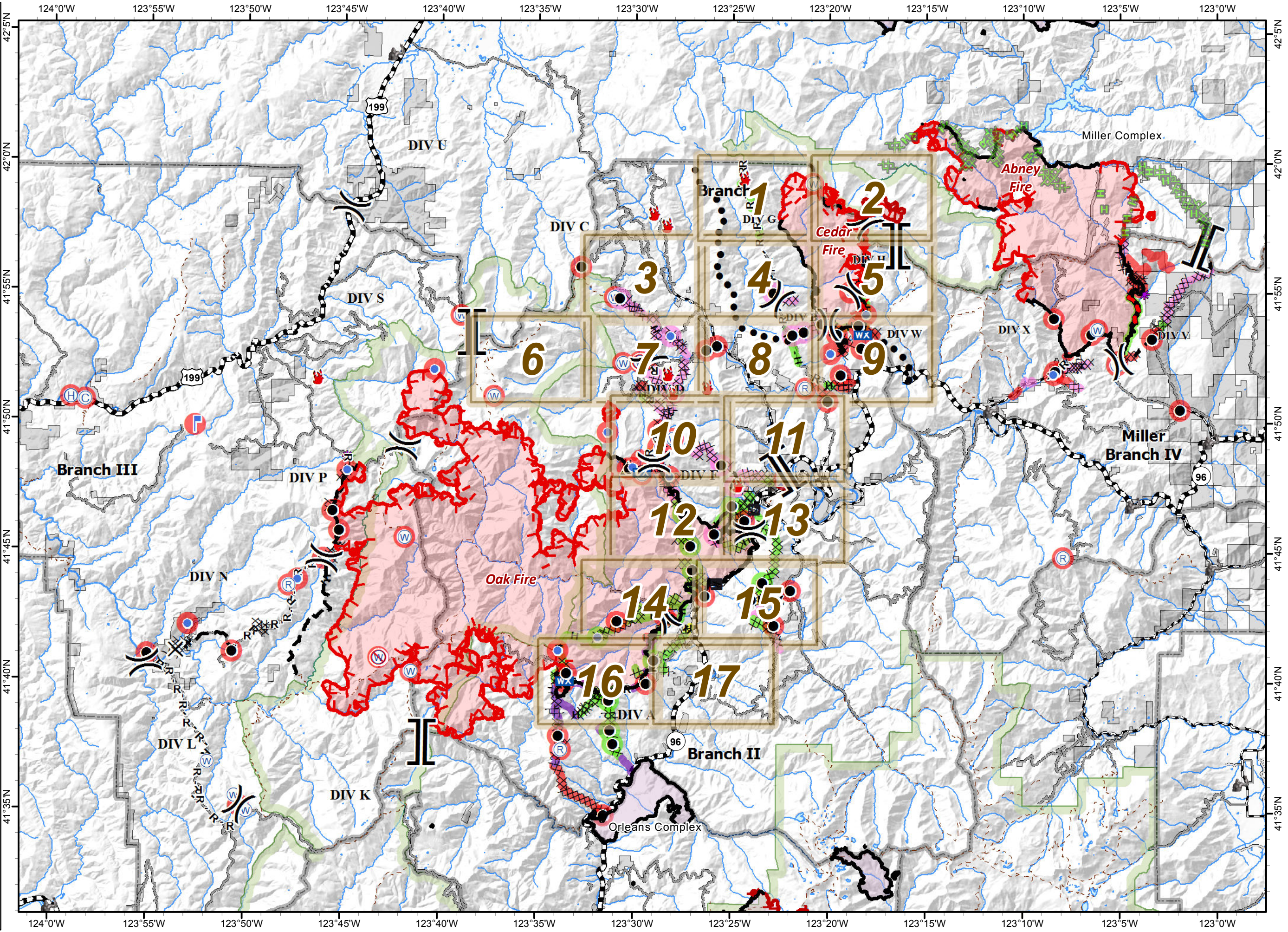
Index

- IAP Tiles Branch I & II
- Road Washout
- Fire Perimeter
- Division
- Branch
- Uncontrolled Fire Edge
- Ridge / Geographic Feature
- Aerial Retardant Drop
- Planned Secondary Line
- Completed Dozer Line
- Completed Line
- H - Hand Line
- Road as Completed Line
- Planned Fire Line
- Proposed Dozer Line
- Containment Line
- Ownership Private
- Ranger District Boundary
- Wilderness
- Boat Ramp
- Camp
- Drop Point
- Fire Location
- Helibase
- Helispot
- Incident Command Post
- Lookout
- Mobile Weather Unit
- Repeater
- Safety Zone
- Water Source
- Restricted Water Source
- Completed - Inspected
- Ready to be Worked On
- Repair Needed
- Completed - Inspected
- In Progress
- Ready to be Worked On
- Repair Needed
- Unknown

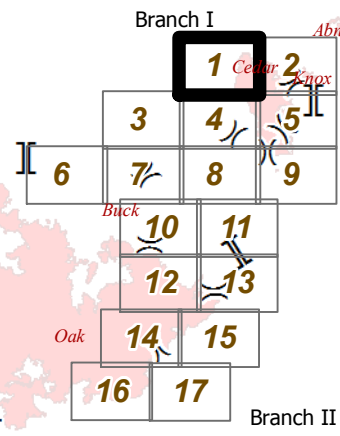




0 2 4 Miles

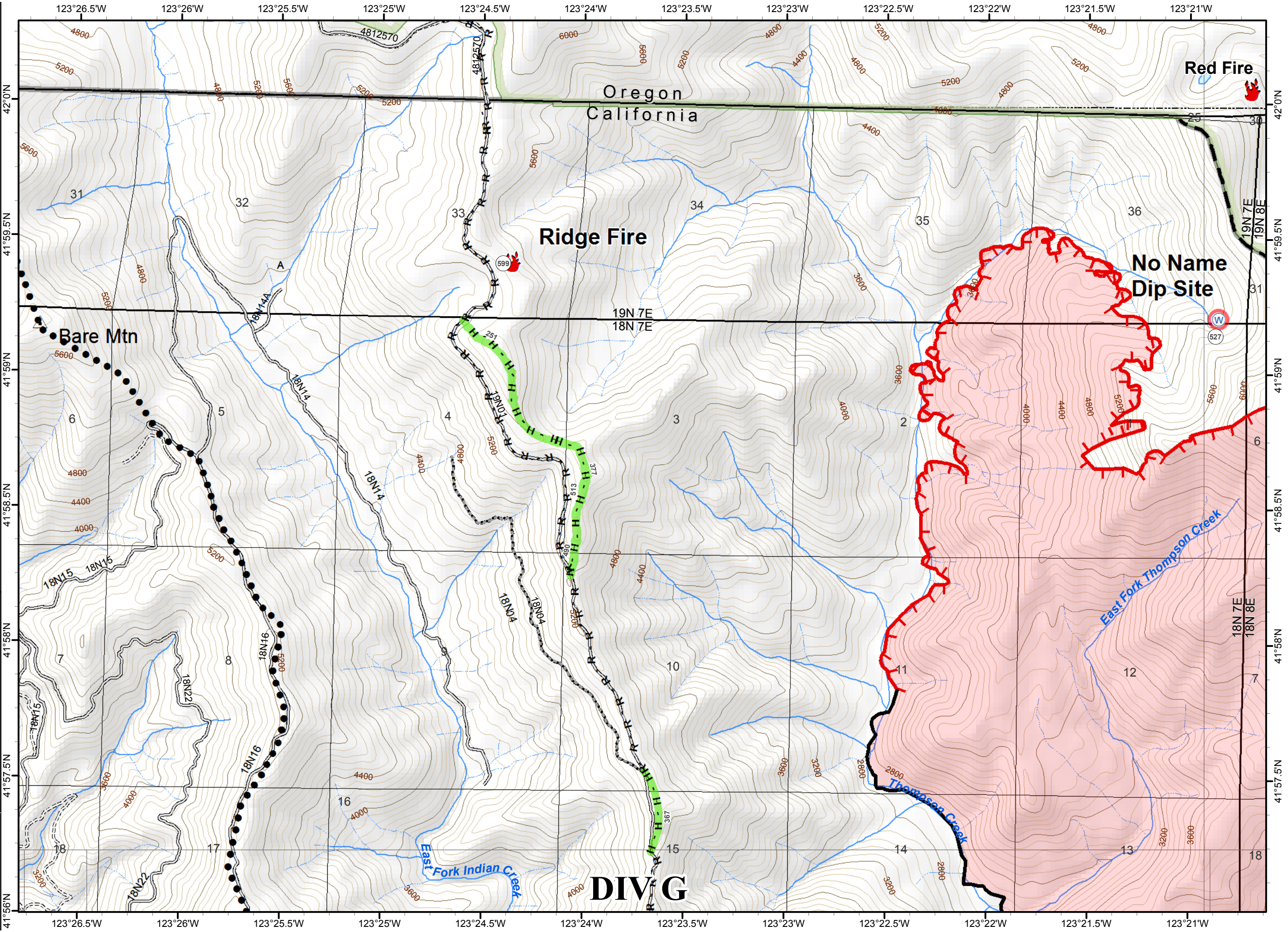
NAD 1983 UTM zone 10N



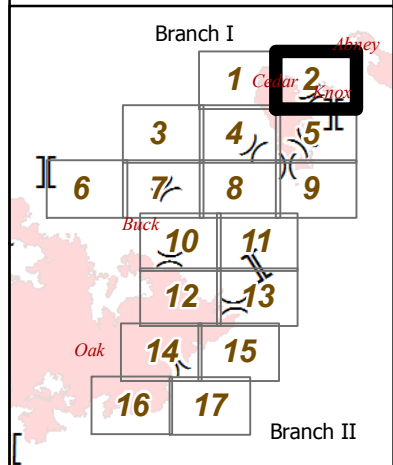
- () Division
- ▭ Ranger District Boundary
- ▭ Branch
- 🔥 Fire Location
- 🌊 Water Source
- 🔴 Uncontrolled Fire Edge
- Planned Secondary Line
- ▬ Completed Line
- H - Hand Line
- R - Road as Completed Line
- ▬ Planned Fire Line
- ▭ Fire Perimeter
- ▭ Wilderness
- Repair Needed
- ▬ Completed - Inspected



NAD 1983 UTM zone 10N

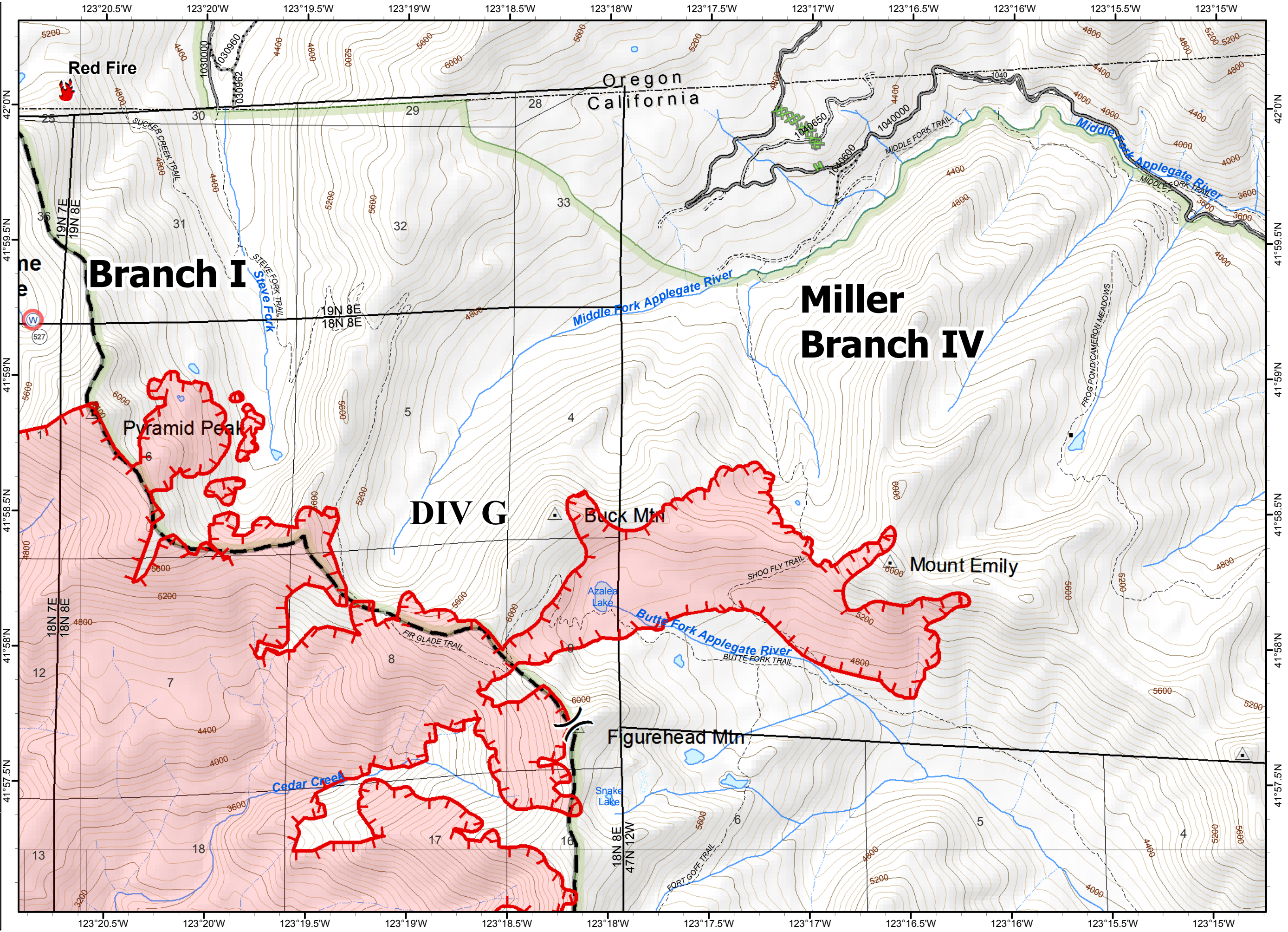


- () Division
- [] Branch
- Miller Completed Dozer Line
- Miller Completed Hand Line
- Water Source
- Uncontrolled Fire Edge
- Planned Fire Line
- Ranger District Boundary
- Fire Perimeter
- Wilderness
- Ownership Private
- Repair Needed

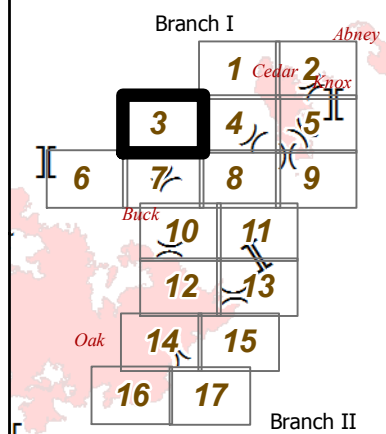


0 0.2 0.4 Miles

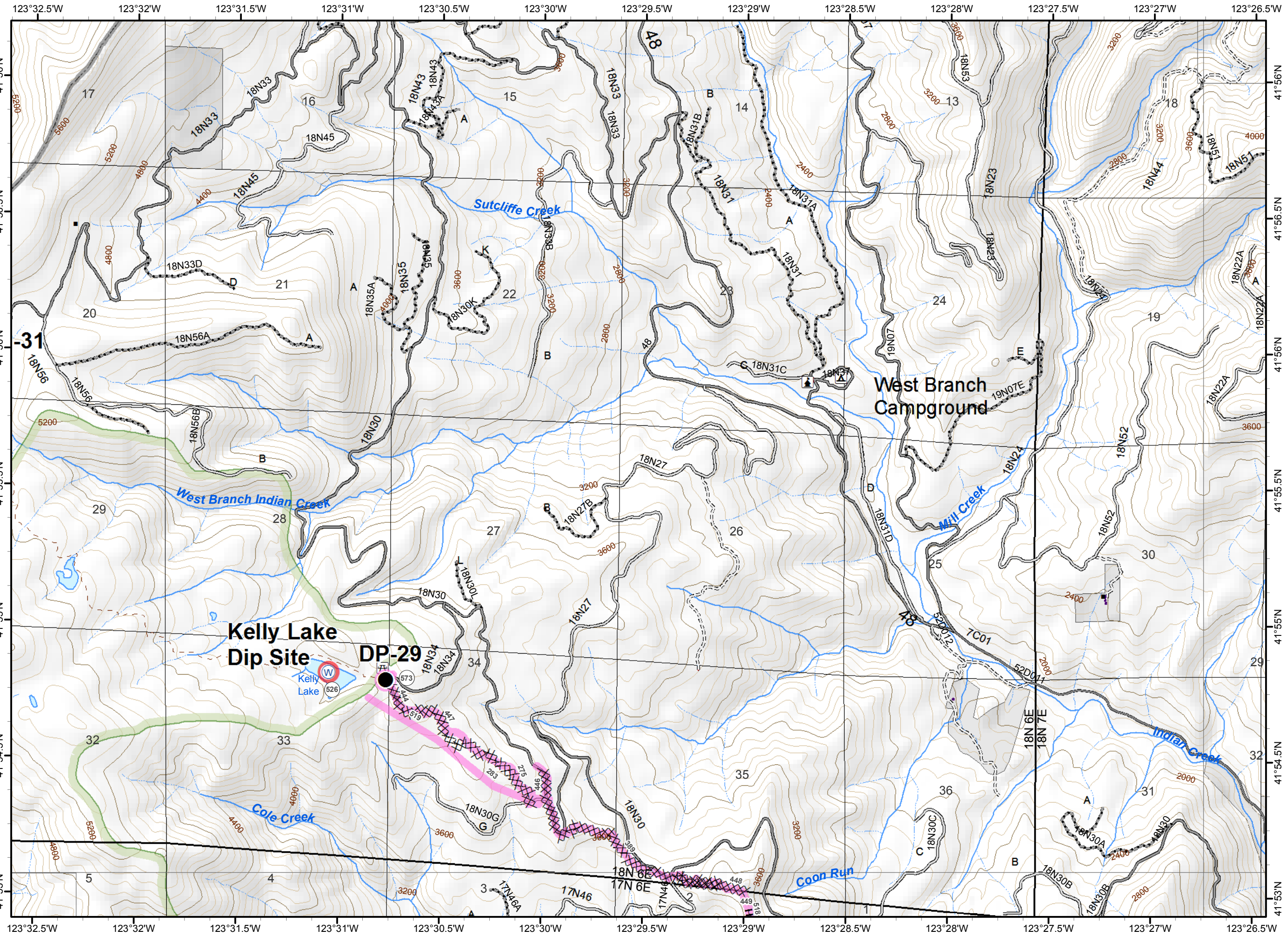
NAD 1983 UTM zone 10N



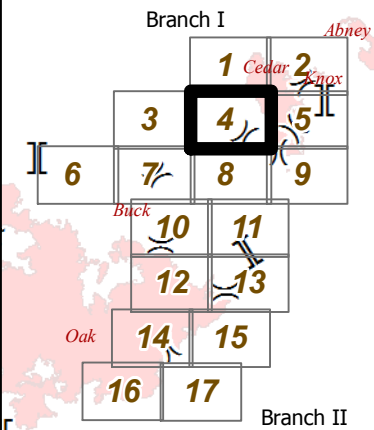
- Division
- Branch
- Drop Point
- Water Source
- Completed Dozer Line
- Hand Line
- Ranger District Boundary
- Wilderness
- Ownership Private
- Ready to be Worked On
- Repair Needed
- Ready to be Worked On



NAD 1983 UTM zone 10N

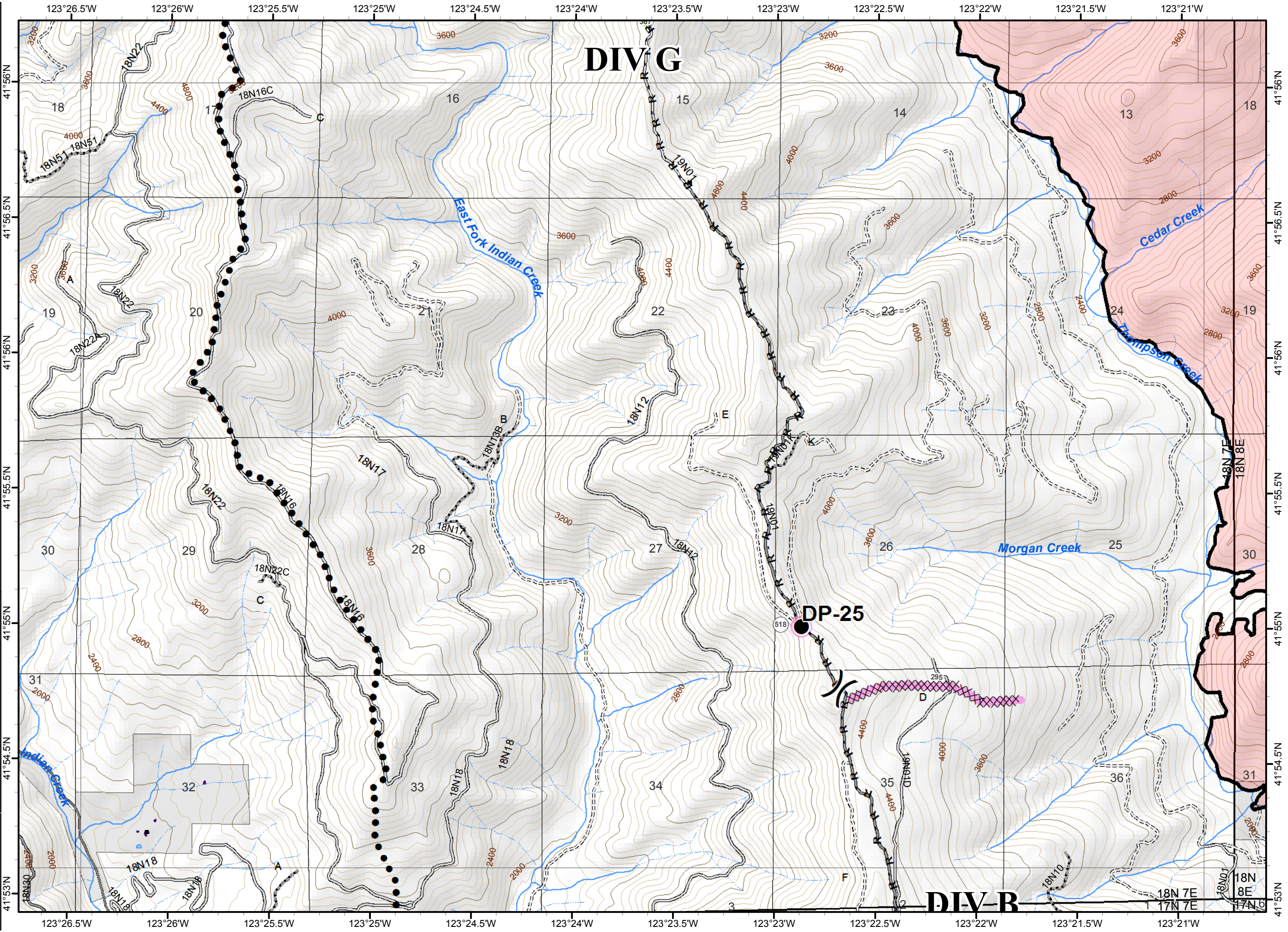


- () Division
- ▭ Ranger District Boundary
- ▭ Branch
- Drop Point
- Planned Secondary Line
- ▨ Completed Dozer Line
- ▬ Completed Line
- H - Hand Line
- R - Road as Completed Line
- ▭ Fire Perimeter
- ▭ Ownership Private
- Ready to be Worked On
- ▬ Completed - Inspected
- ▬ Ready to be Worked On

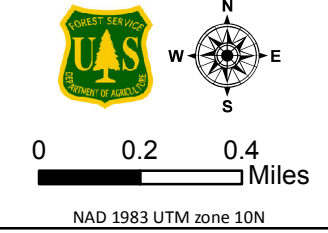
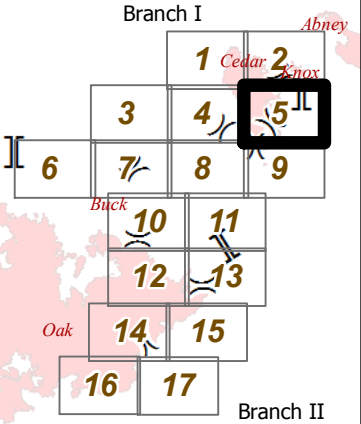
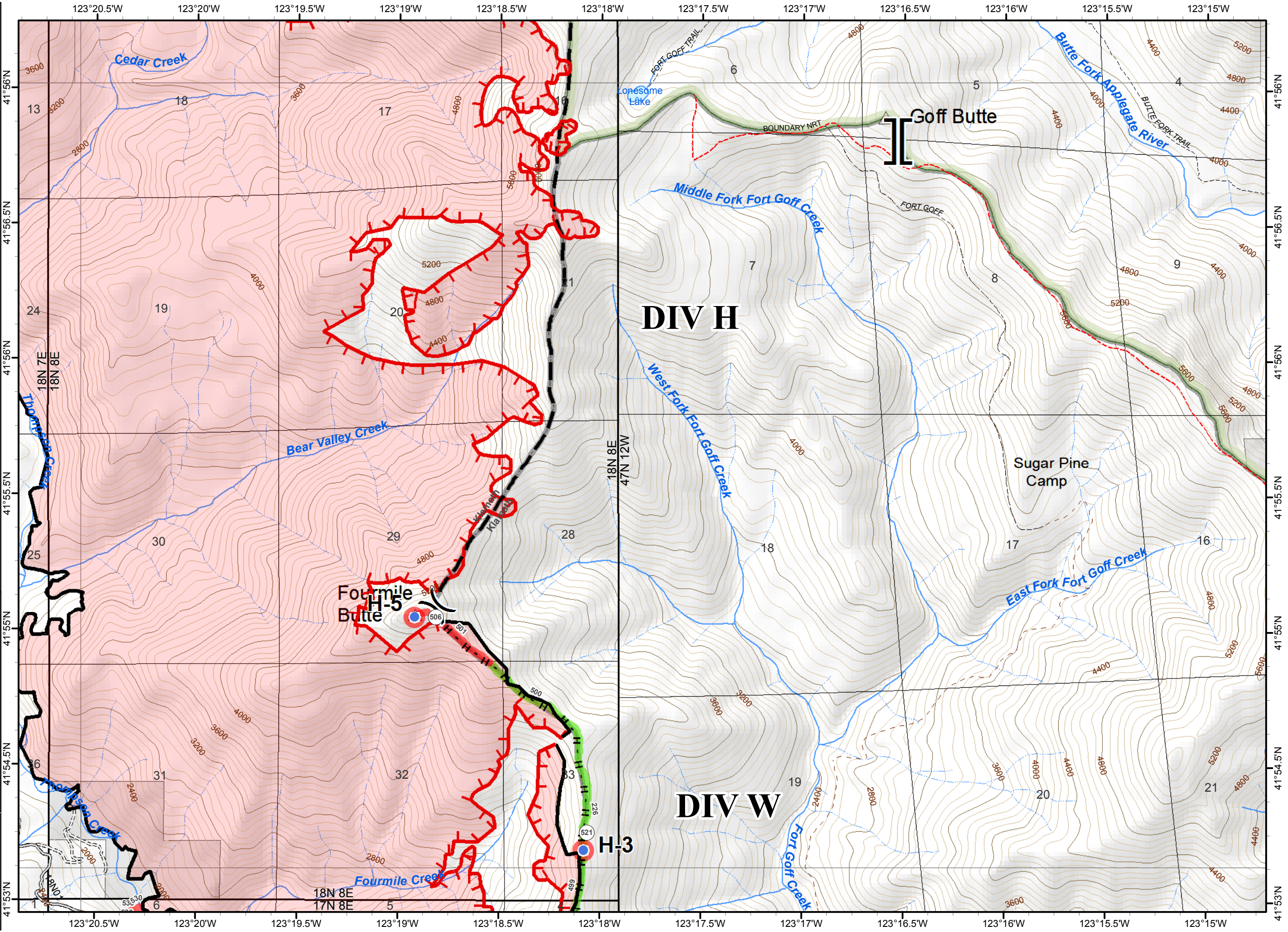


0 0.2 0.4 Miles

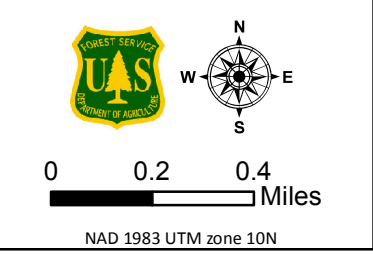
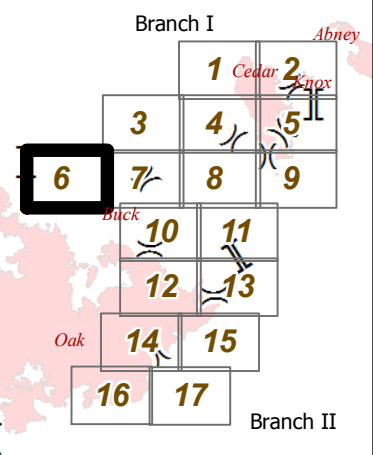
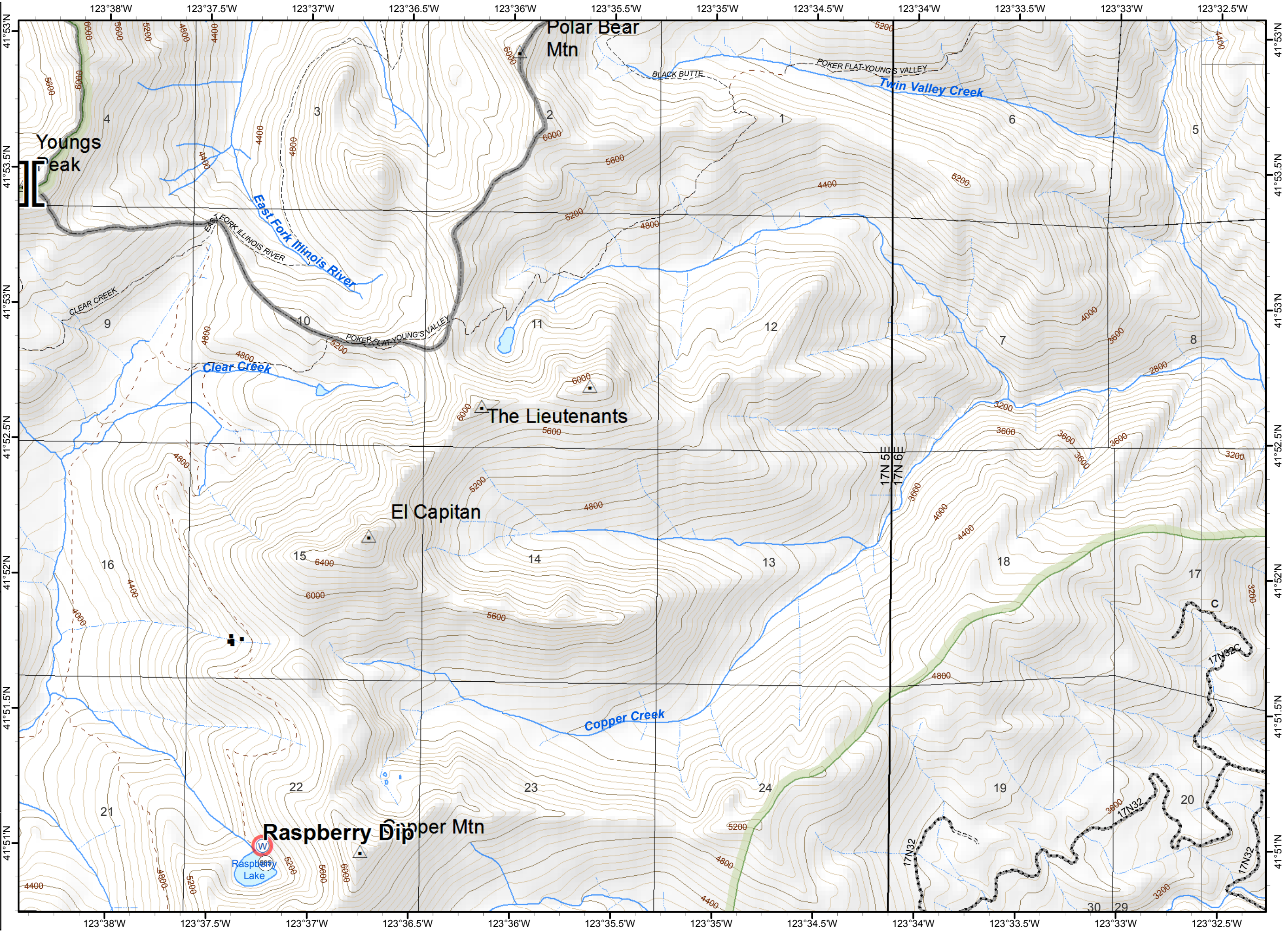
NAD 1983 UTM zone 10N



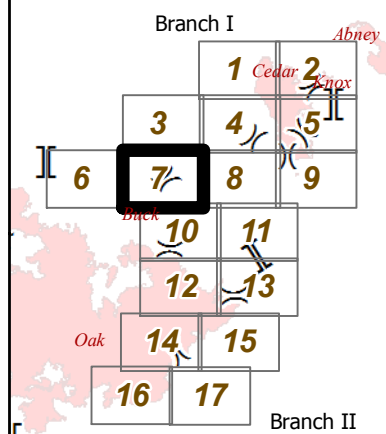
- Division
- Branch
- Helispot
- Uncontrolled Fire Edge
- Completed Line
- H - Hand Line
- Planned Fire Line
- Ranger District Boundary
- Fire Perimeter
- Wilderness
- Ownership Private
- Repair Needed
- Completed - Inspected
- Repair Needed



- () Division
- ▭ Ranger District Boundary
- ▭ Wilderness
- ▭ Ownership Private
- Repair Needed
- ▭ Branch
- ▭ Wilderness
- ▭ Ownership Private
- Repair Needed
- ⊙ Water Source

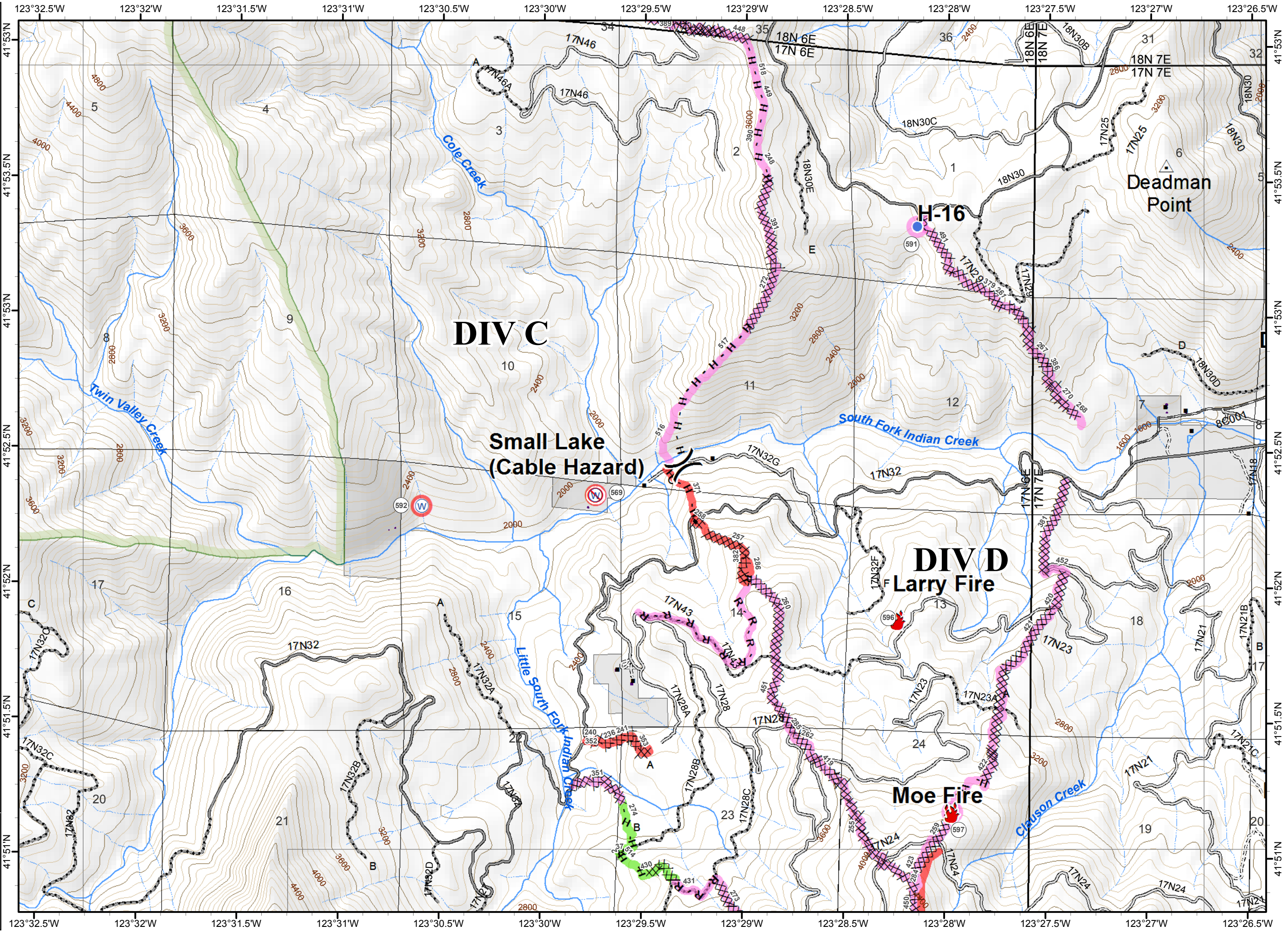


- Division
- Branch
- Fire Location
- Helispot
- Water Source
- Restricted Water Source
- Completed Dozer Line
- H - Hand Line
- R - Completed Line
- Planned Fire Line
- Ranger District Boundary
- Wilderness
- Ownership Private
- Ready to be Worked On
- Repair Needed
- Completed - Inspected
- Ready to be Worked On
- Repair Needed

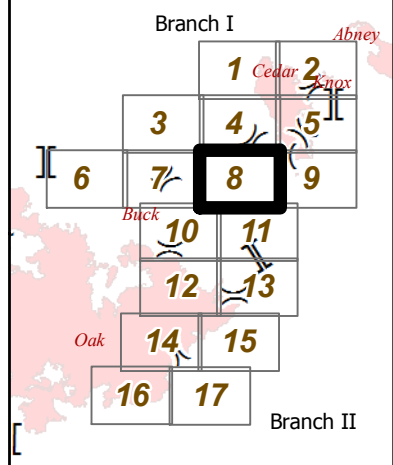
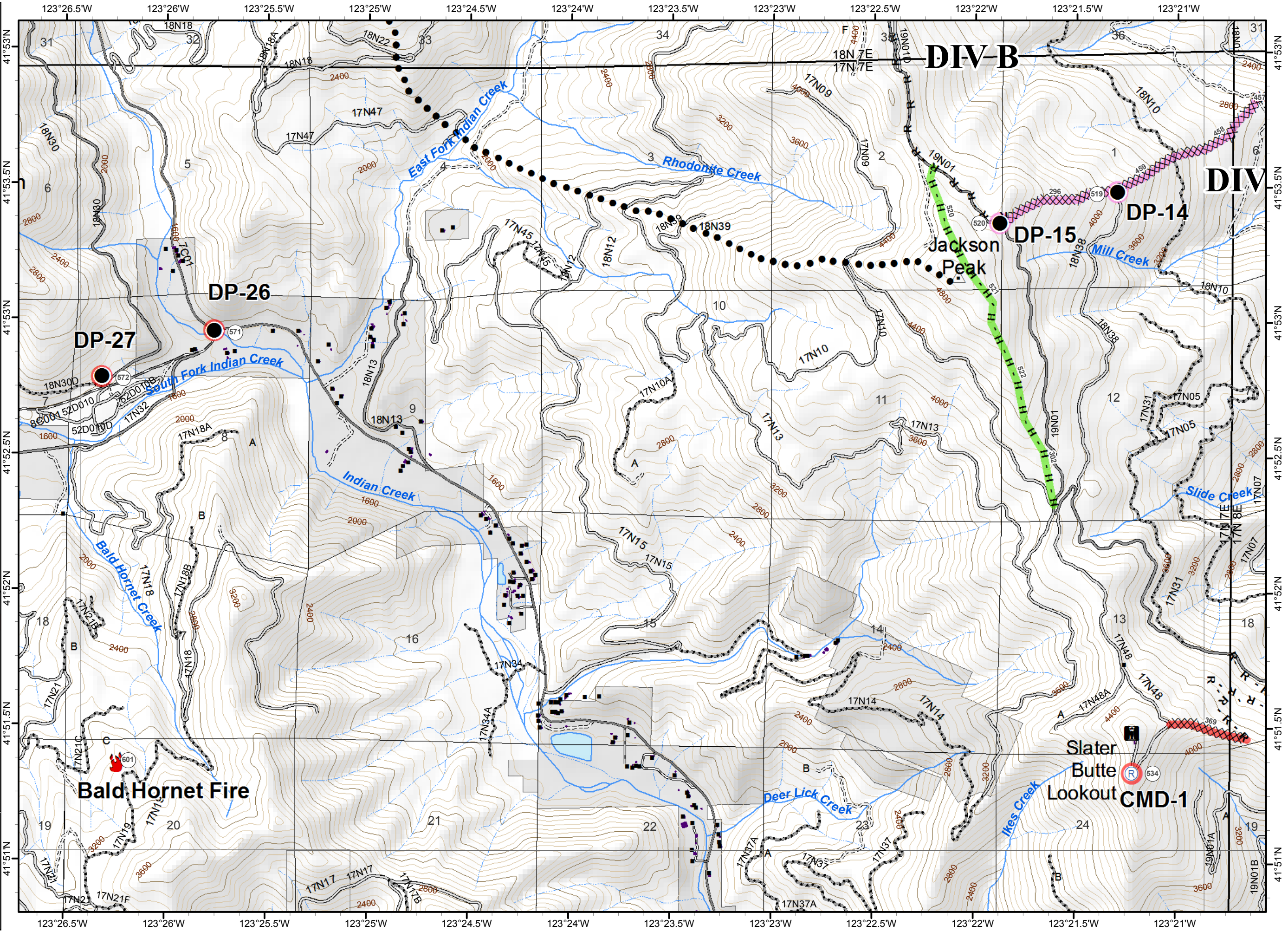


0 0.2 0.4 Miles

NAD 1983 UTM zone 10N



- () Division
- ▭ Ranger District Boundary
- ▭ Ownership Private
- Drop Point
- Ready to be Worked On
- 🔥 Fire Location
- Repair Needed
- Ⓡ Repeater
- Planned Secondary Line
- ▨ Completed Dozer Line
- H - Hand Line
- R - Road as Completed Line
- ▭ Completed - Inspected
- ▨ Ready to be Worked On
- ▨ Repair Needed

DIV-B

DIV

DP-26

DP-27

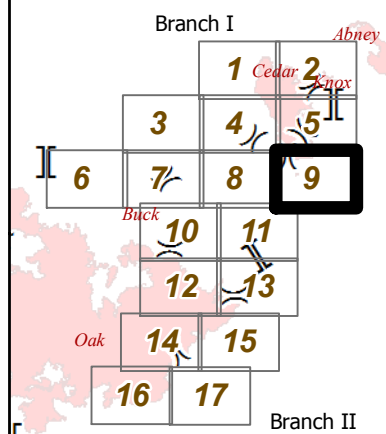
DP-15

DP-14

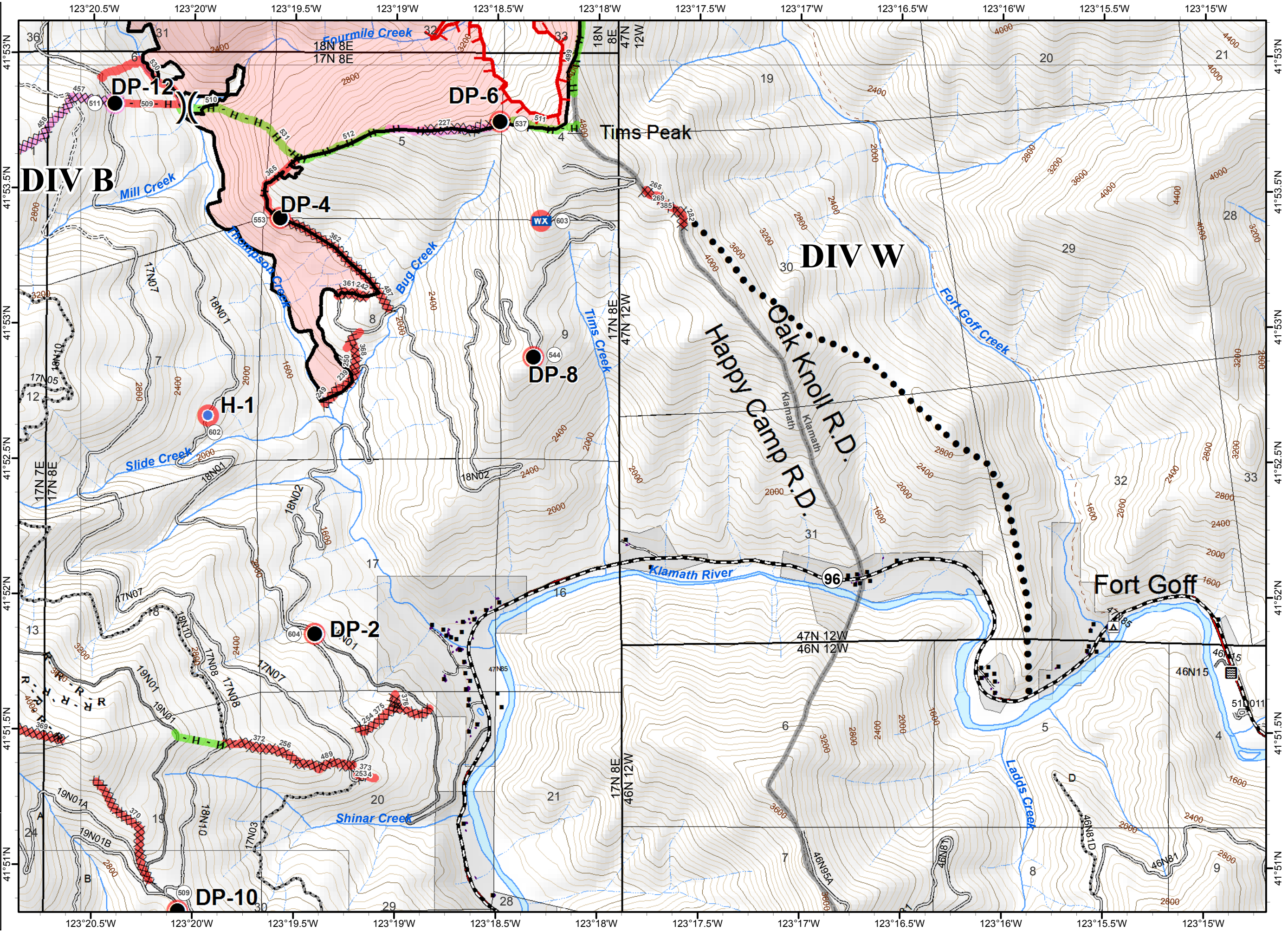
Bald Hornet Fire

Slater Butte Lookout CMD-1

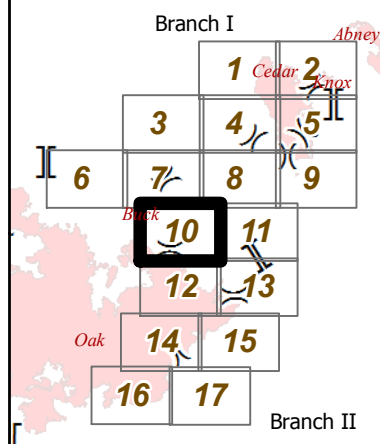
- () Division
- [] Branch
- Drop Point
- Helispot
- WX Mobile Weather Unit
- Uncontrolled Fire Edge
- Planned Secondary Line
- XXXX Completed Dozer Line
- Completed Line
- H - Hand Line
- R - Road as Completed Line
- ▭ Ranger District Boundary
- ▭ Fire Perimeter
- ▭ Ownership Private
- Ready to be Worked On
- Repair Needed
- Completed - Inspected
- Ready to be Worked On
- Repair Needed



NAD 1983 UTM zone 10N

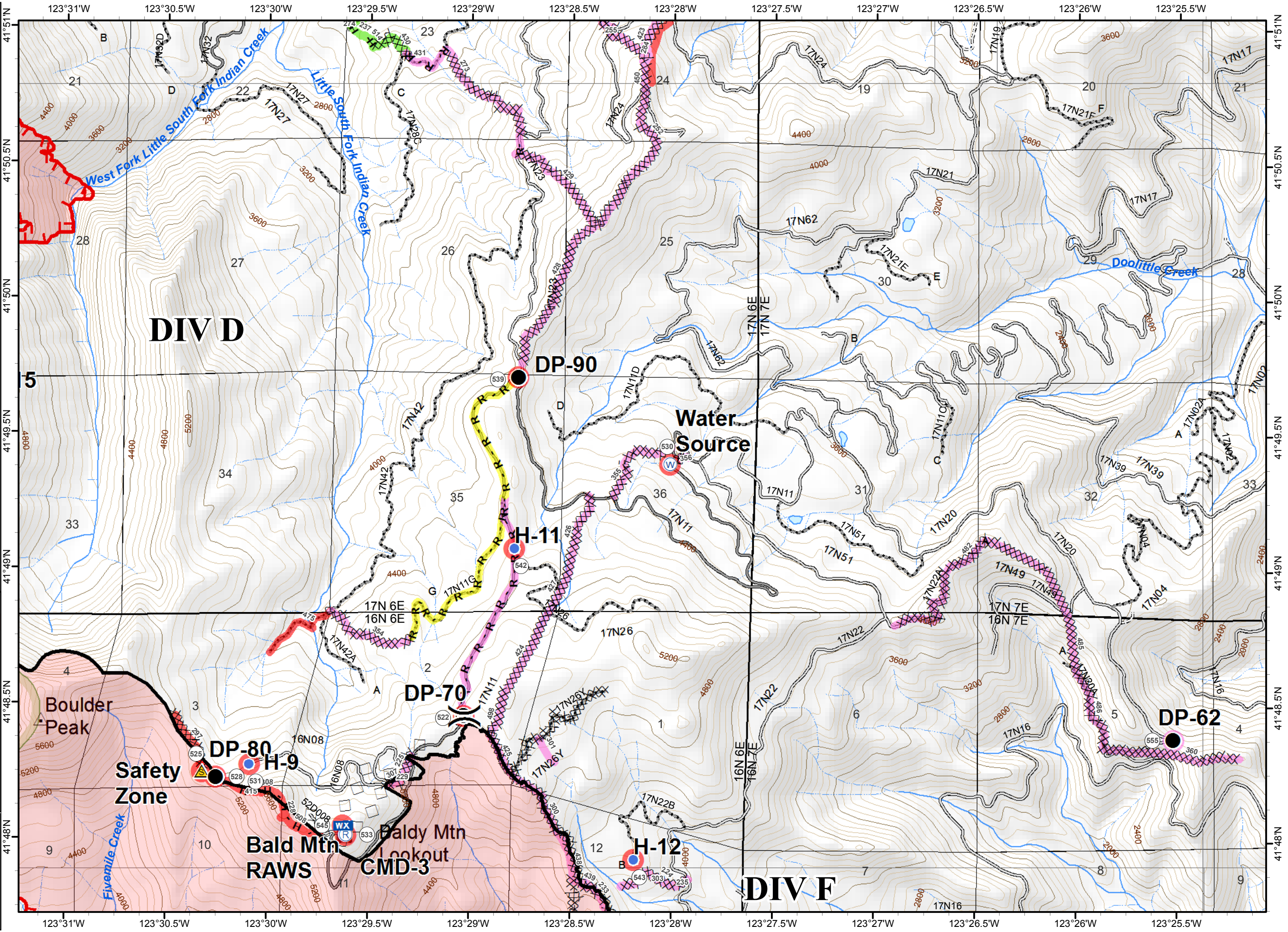


- () Division
- ▭ Ranger District Boundary
- ▭ Branch
- Drop Point
- Helispot
- WX Mobile Weather Unit
- Ⓡ Repeater
- ⚠ Safety Zone
- Ⓜ Water Source
- ┌ Uncontrolled Fire Edge
- ◇ Aerial Retardant Drop
- ▨ Completed Dozer Line
- ▬ Completed Line
- H - Hand Line
- R - Road as Completed Line
- ▬ Planned Fire Line
- ▭ Fire Perimeter
- ▭ Wilderness
- Ready to be Worked On
- Repair Needed
- ▭ Completed - Inspected
- ▭ In Progress
- ▭ Ready to be Worked On
- ▭ Repair Needed

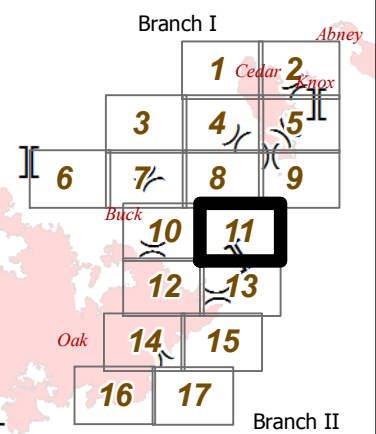
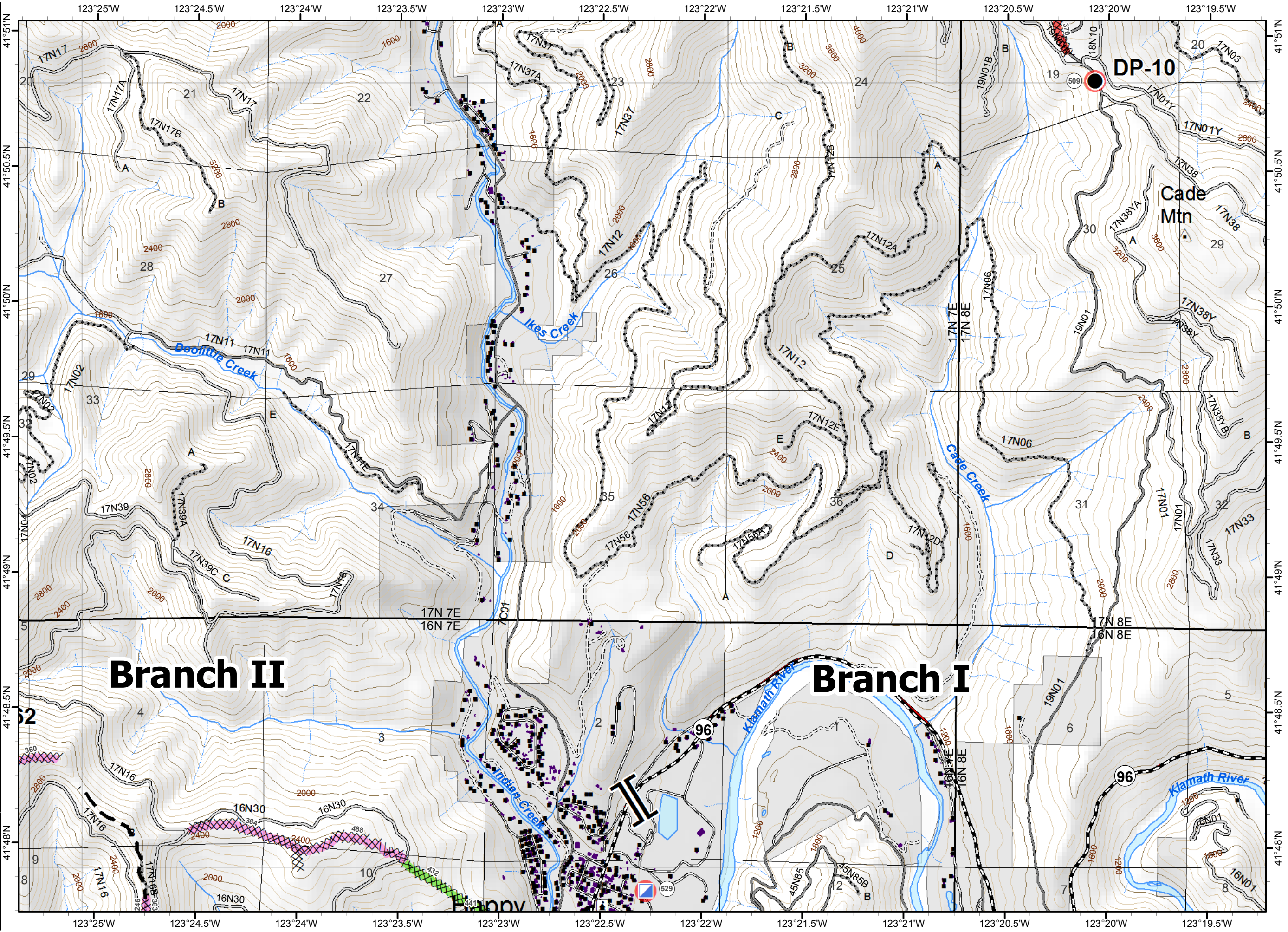


0 0.2 0.4 Miles

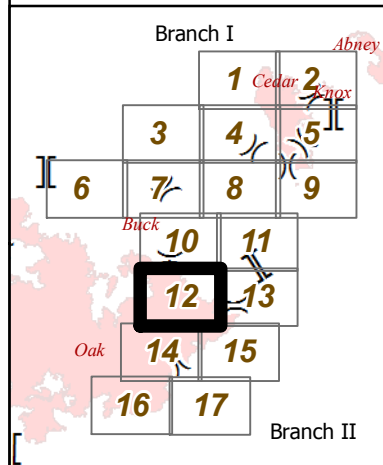
NAD 1983 UTM zone 10N



- () Division
- ▭ Ranger District Boundary
- ▭ Branch
- ▭ Ownership Private
- Drop Point
- Repair Needed
- ▭ Incident Command Post
- ▭ Completed - Inspected
- ▭ Completed Dozer Line
- ▭ Ready to be Worked On
- ▭ Planned Fire Line
- ▭ Repair Needed

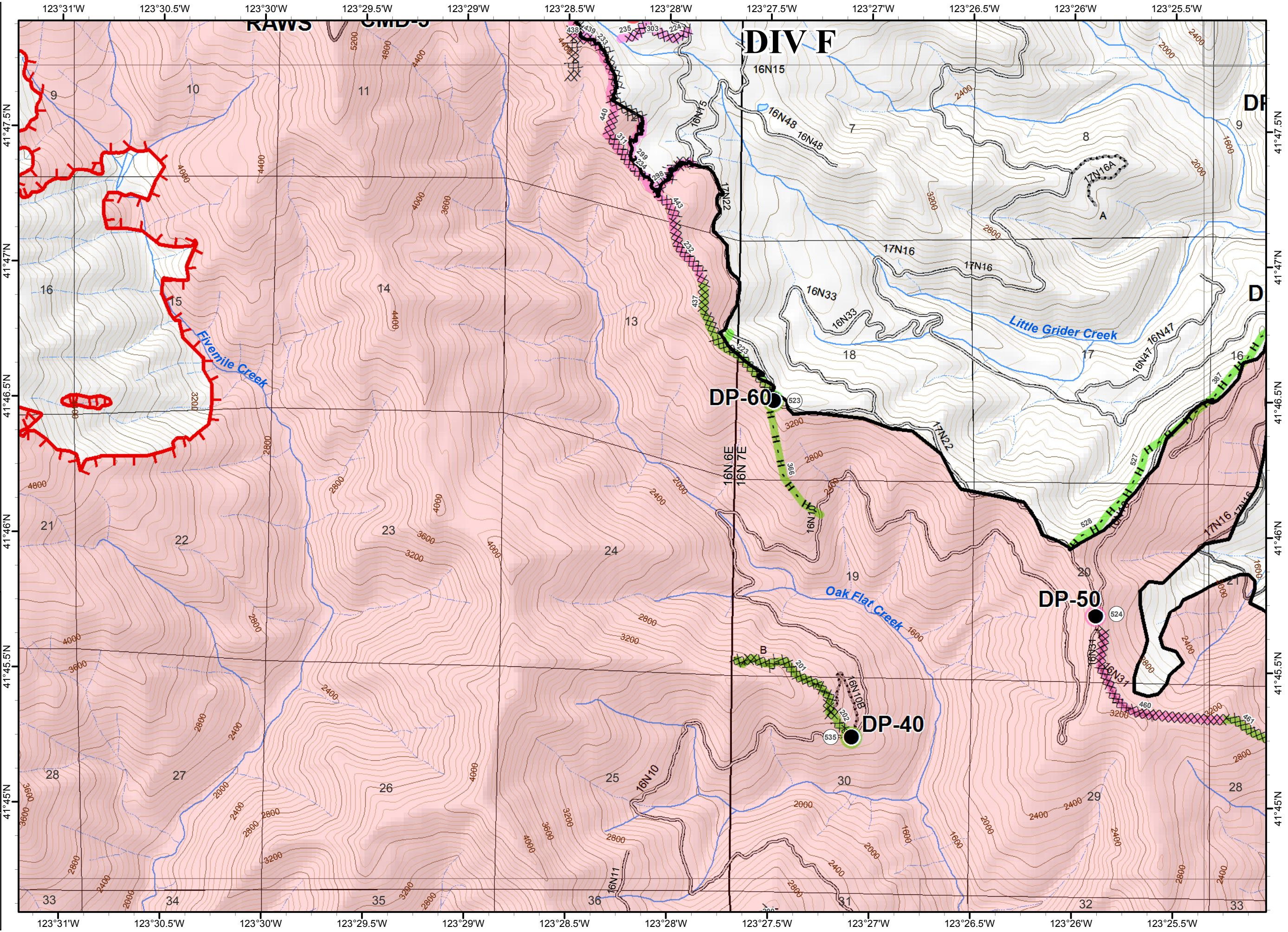


- Division
- Branch
- Drop Point
- Uncontrolled Fire Edge
- Completed Dozer Line
- Completed Line
- H - Hand Line
- Ranger District Boundary
- Fire Perimeter
- Completed - Inspected
- Ready to be Worked On
- Repair Needed
- Completed - Inspected
- Ready to be Worked On

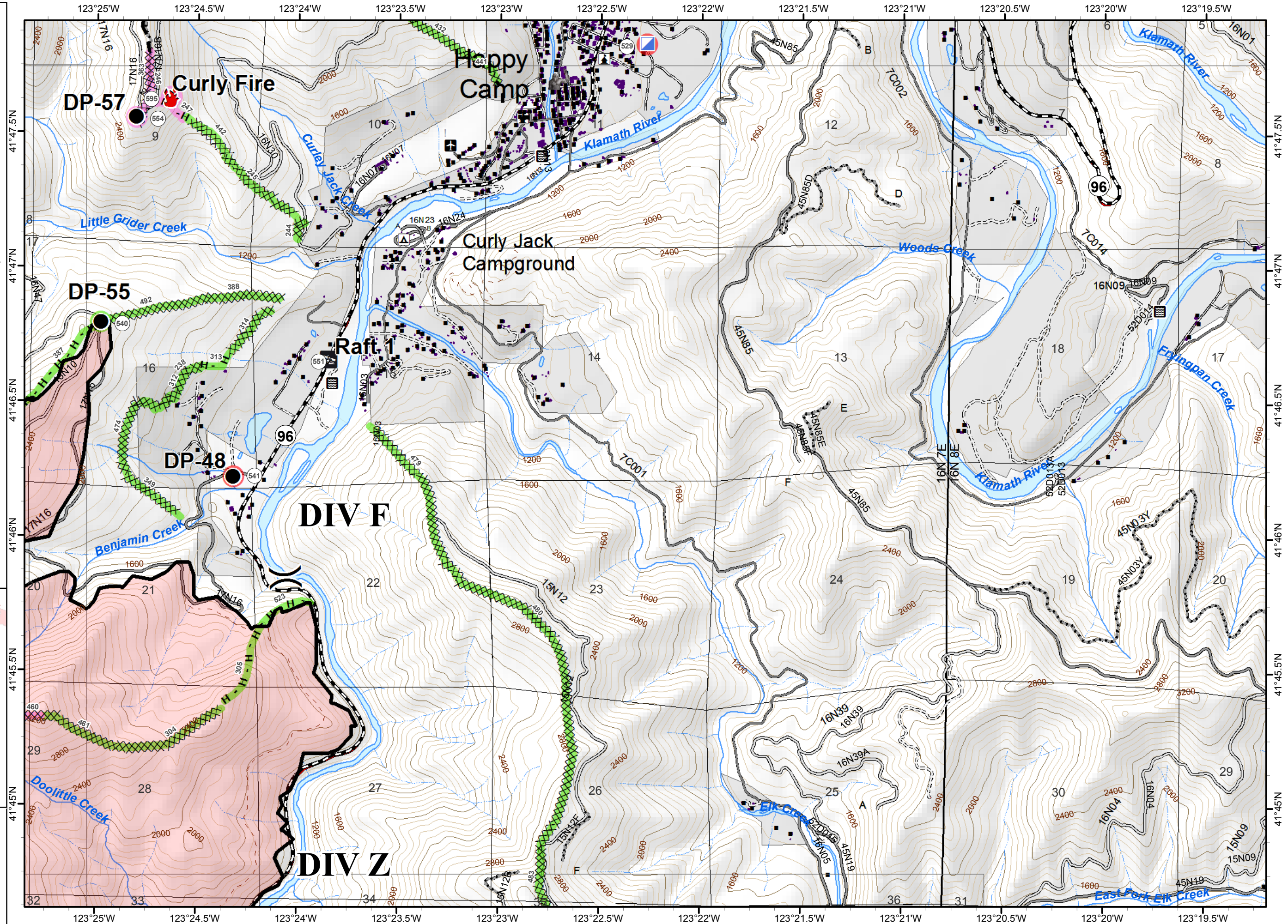
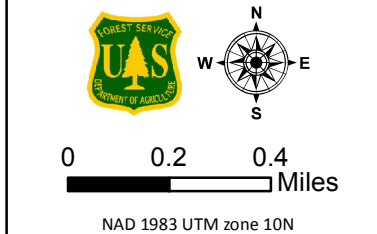
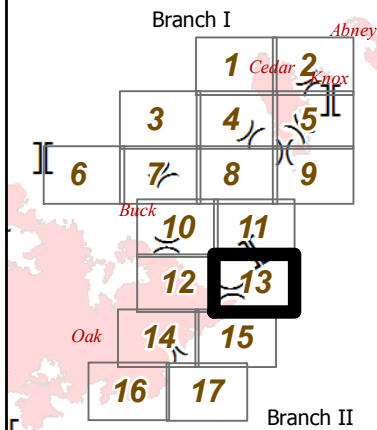


0 0.2 0.4 Miles

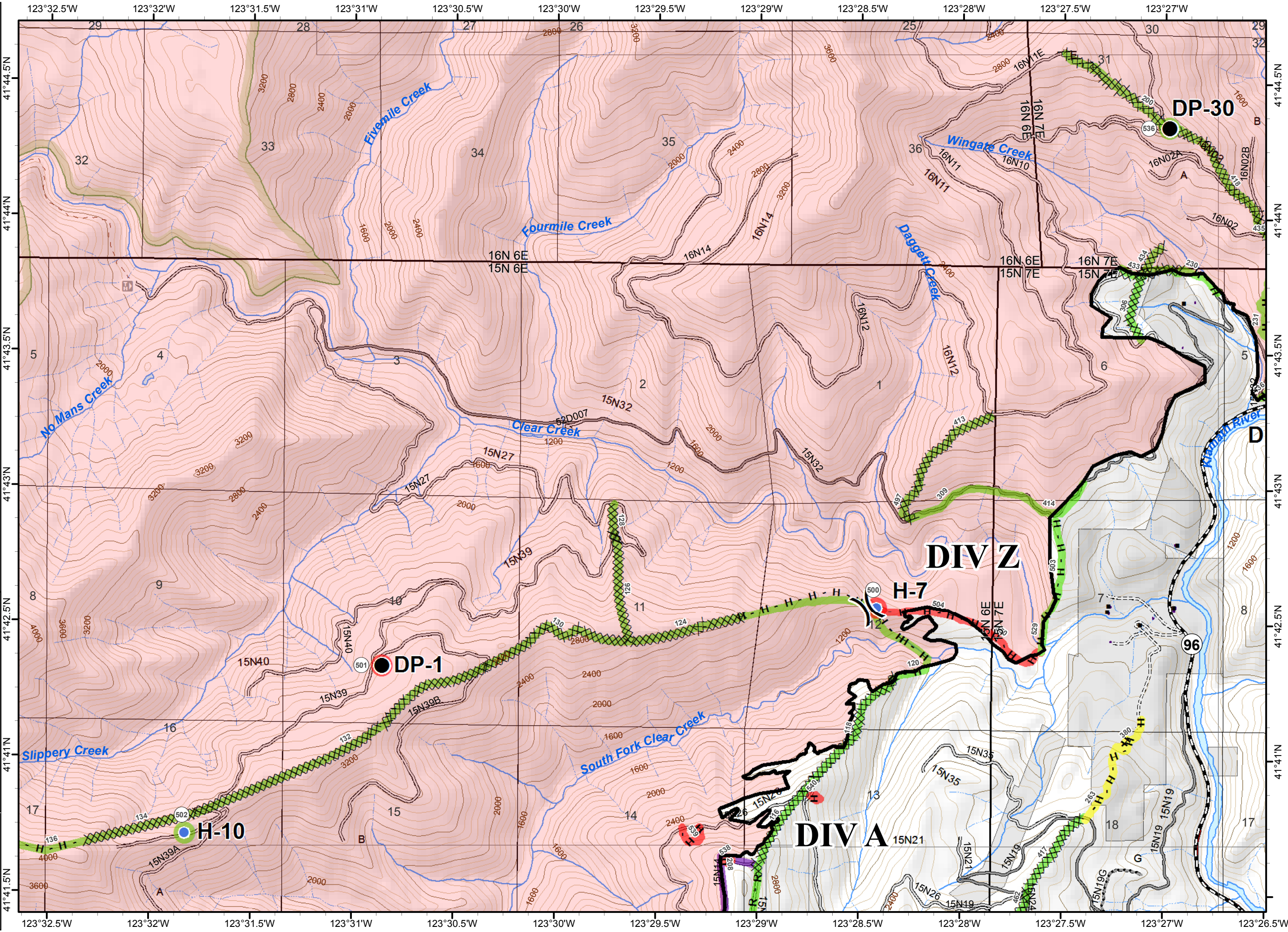
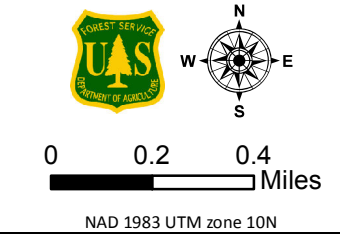
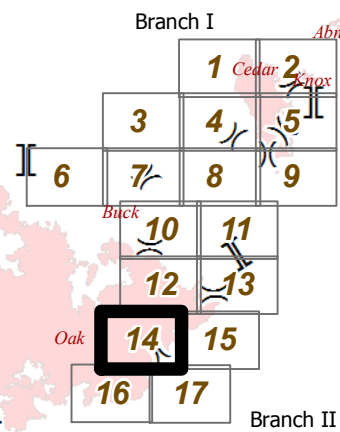
NAD 1983 UTM zone 10N



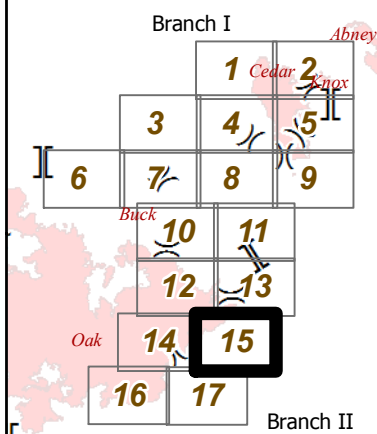
- () Division
- ▭ Ranger District Boundary
- ▭ Branch
- ▭ Boat Ramp
- Drop Point
- 🔥 Fire Location
- ▭ Incident Command Post
- ▭ Completed Dozer Line
- ▭ Completed Line
- H - Hand Line
- ▭ Planned Fire Line
- ▭ Fire Perimeter
- ▭ Ownership Private
- Completed - Inspected
- Ready to be Worked On
- Repair Needed
- ▭ Completed - Inspected
- ▭ Ready to be Worked On



- () Division
- [] Branch
- Drop Point
- Helispot
- XXXX Completed Dozer Line
- Completed Line
- H - Hand Line
- R - Road as Completed Line
- ▭ Ranger District Boundary
- ▭ Fire Perimeter
- ▭ Wilderness
- ▭ Ownership Private
- Completed - Inspected
- Repair Needed
- Completed - Inspected
- Repair Needed
- In Progress
- Repair Needed
- Unknown

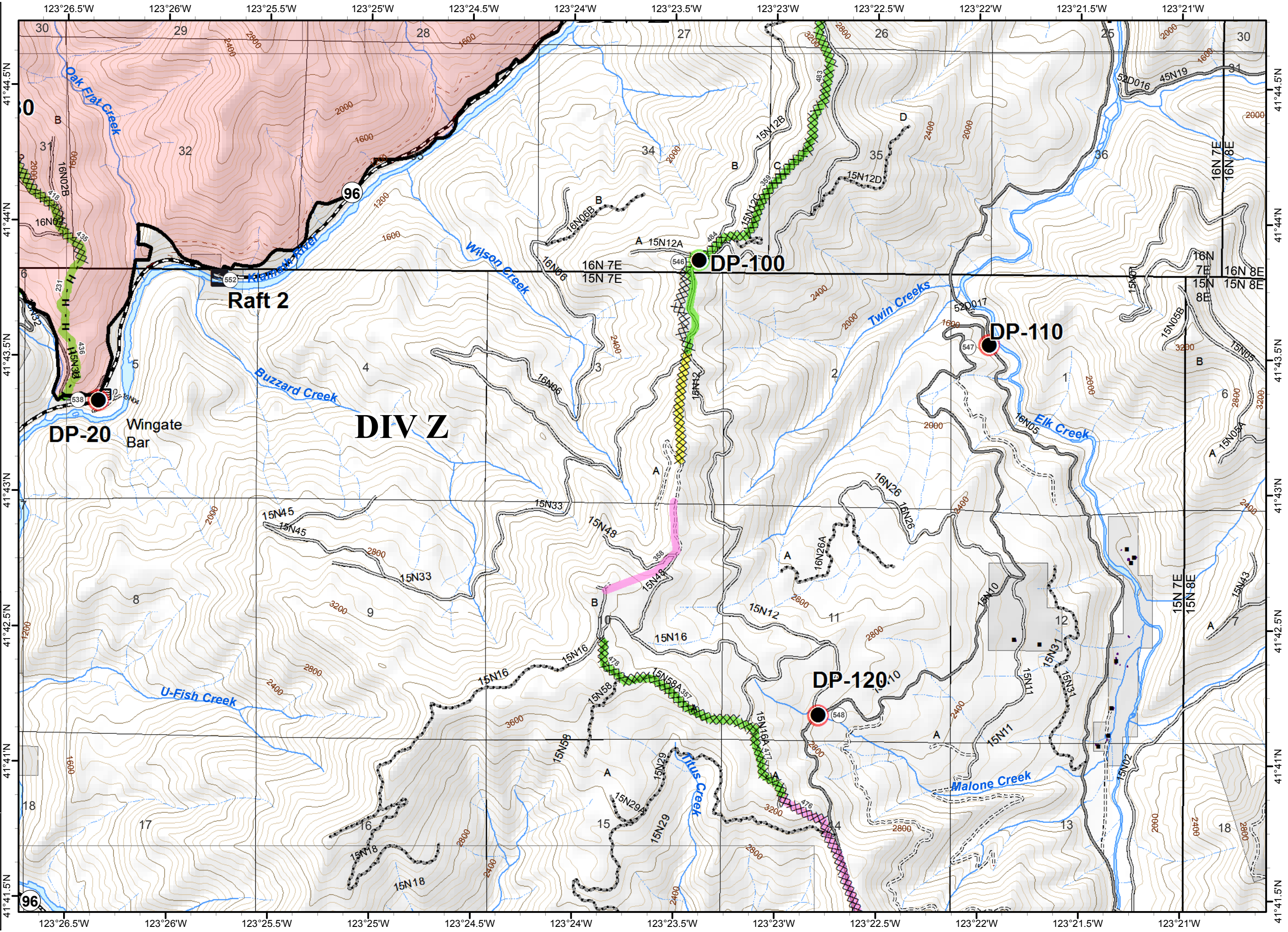


- Division
- Branch
- Boat Ramp
- Drop Point
- Completed Dozer Line
- Completed Line
- Hand Line
- Ranger District Boundary
- Fire Perimeter
- Ownership Private
- Completed - Inspected
- Repair Needed
- Completed - Inspected
- In Progress
- Ready to be Worked On

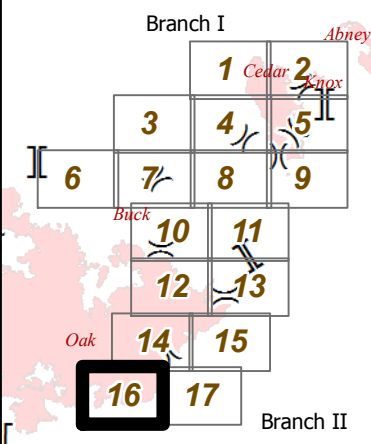


0 0.2 0.4 Miles

NAD 1983 UTM zone 10N



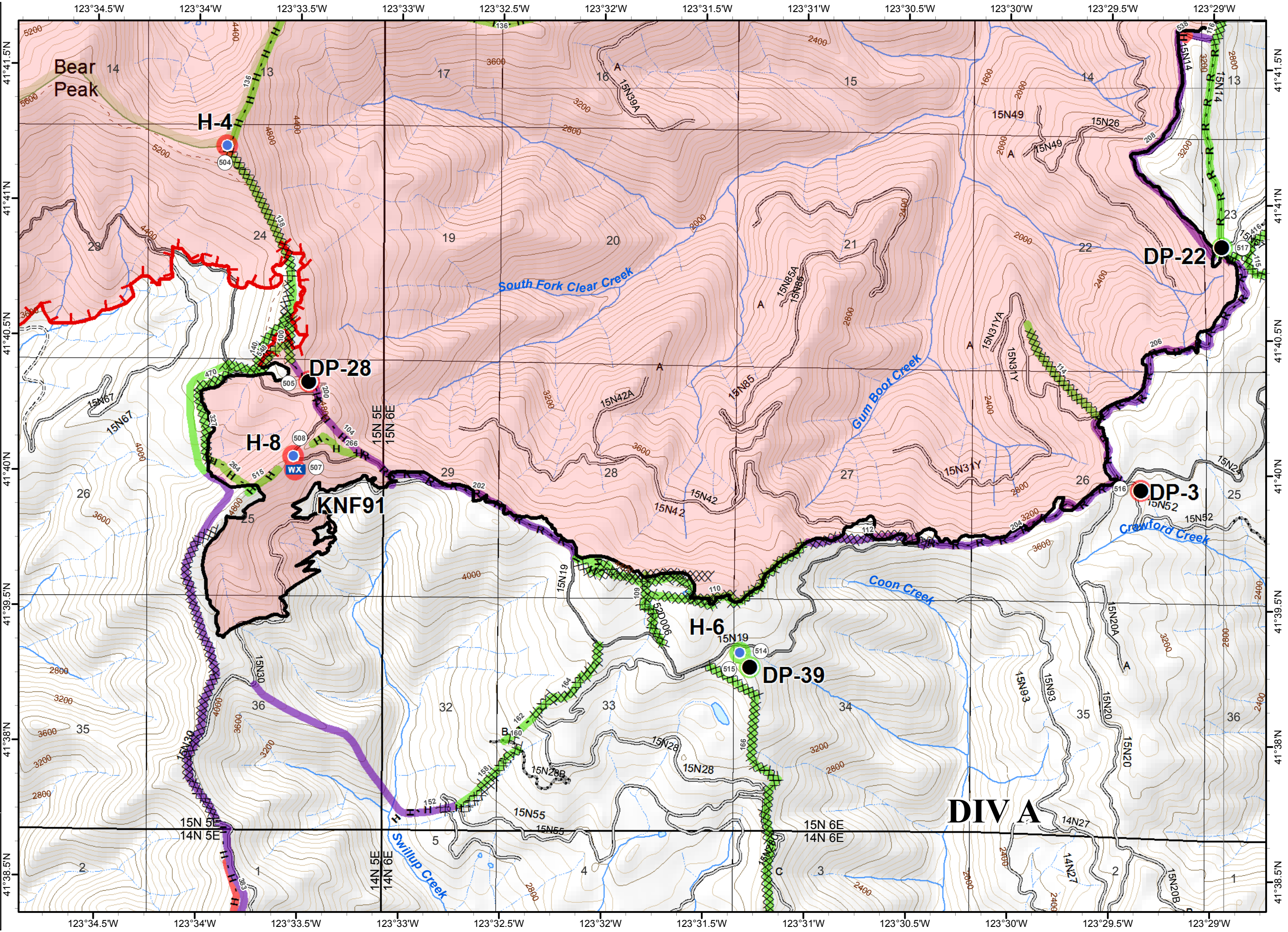
- () Division
- ▭ Ranger District Boundary
- ▭ Branch
- Drop Point
- Helispot
- WX Mobile Weather Unit
- ┌─┐ Uncontrolled Fire Edge
- ▨ Completed Dozer Line
- Completed Line
- H - Hand Line
- R - Road as Completed Line
- ▭ Fire Perimeter
- ▭ Wilderness
- Completed - Inspected
- Repair Needed
- ▭ Completed - Inspected
- ▭ Repair Needed
- ▭ Unknown



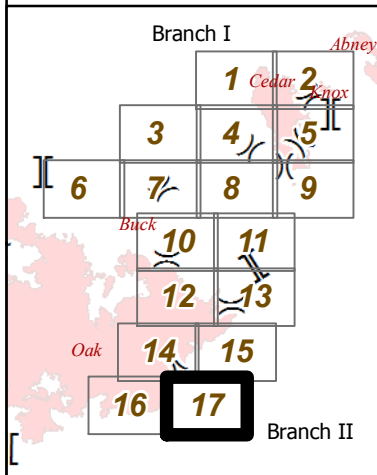
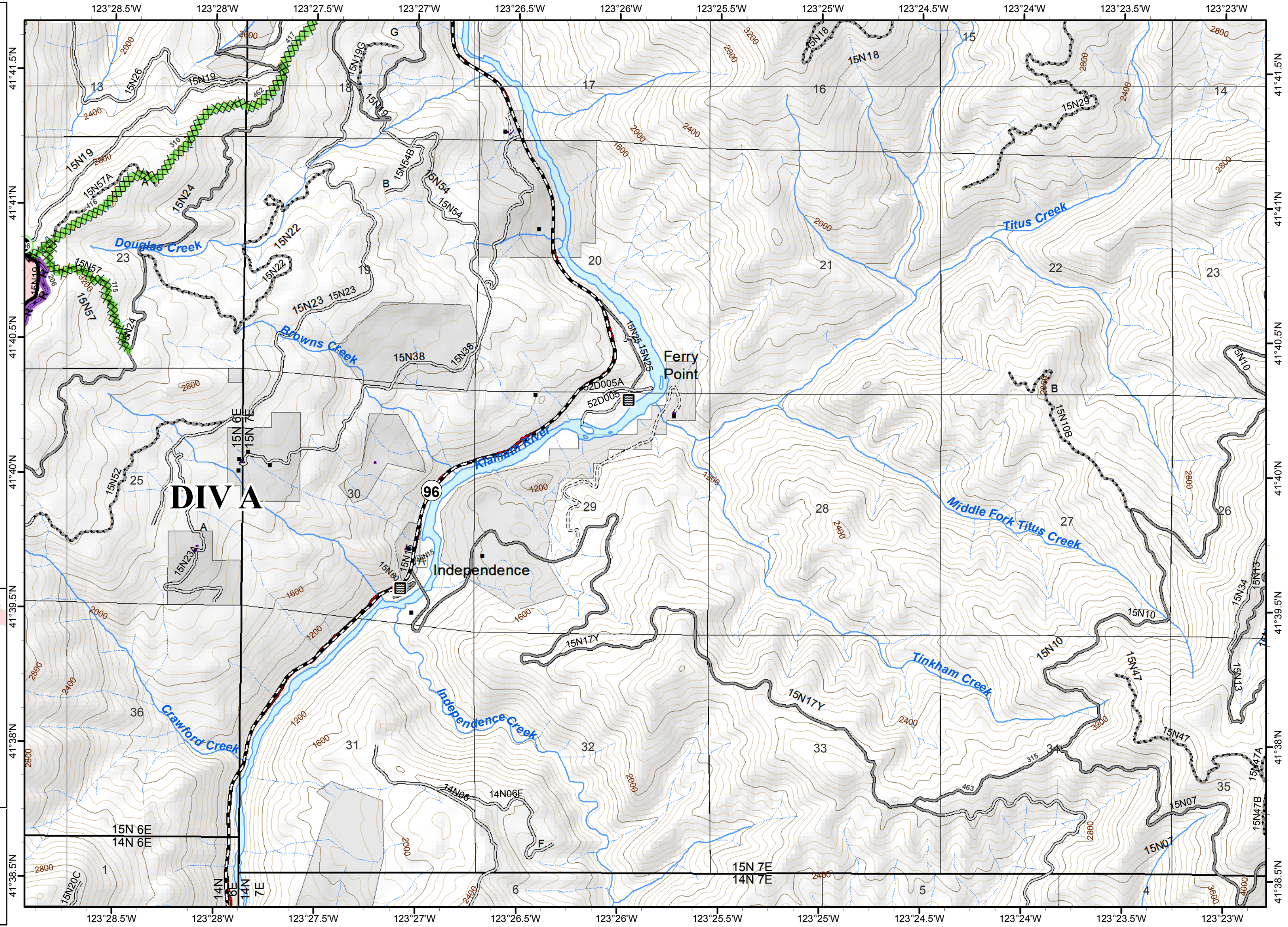
U.S. FOREST SERVICE
 DEPARTMENT OF AGRICULTURE

0 0.2 0.4 Miles

NAD 1983 UTM zone 10N



- () Division
- ▭ Ranger District Boundary
- ▭ Branch
- Drop Point
- ▨ Completed Dozer Line
- ▬ Completed Line
- R - Completed Line
- ▭ Fire Perimeter
- ▭ Ownership Private
- Completed - Inspected
- ▬ Completed - Inspected
- ▬ Unknown



0 0.2 0.4 Miles

NAD 1983 UTM zone 10N