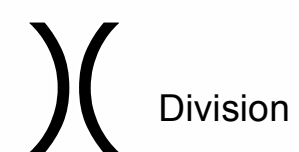




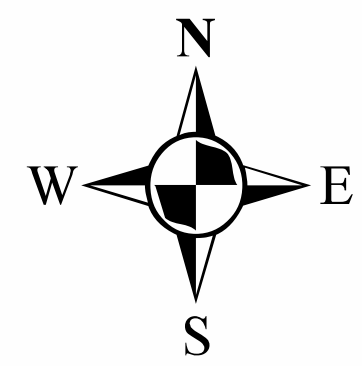
ECLIPSE COMPLEX  
CA-KNF 006098

SEPTEMBER 24-27 2017  
OPERATIONS  
DAY SHIFT

# BRANCH I & IV

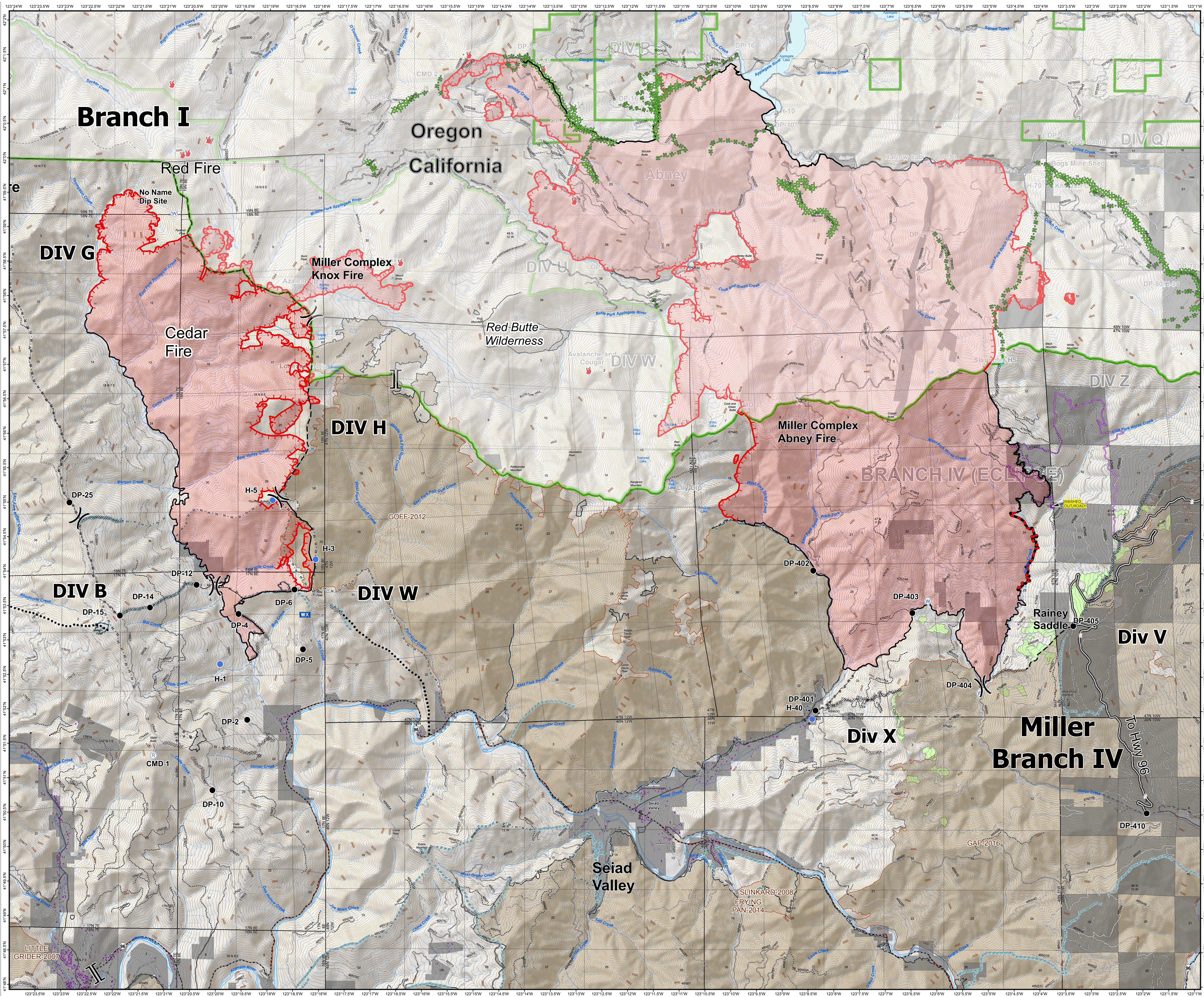


- Incident Command Post
- Camp
- Drop Point
- Fire Location
- Helibase
- Helispot
- Lookout
- Mobile Weather Unit
- Repeater
- Safety Zone
- Water Source
- Restricted Water Source
- Raft Landing
- Road Washout
- Uncontrolled Fire Edge
- Completed Dozer Line
- Completed Line
- Hand Line
- Road as Completed Line
- Aerial Retardant Drop
- Planned Fire Line
- Planned Secondary Line
- Proposed Dozer Line
- Ridge / Geographic Feature
- Containment Line
- Miller Completed Line
- Miller Completed Dozer Line
- Miller Completed Hand Line
- Miller Road as Completed Line
- Past Ridge/Geographic Feature
- Past Highlighted Man Made Feature
- Past Hand Line
- Past Completed Dozer Line
- Past Completed Line
- Wilderness
- Forest Service Admin Boundary
- Fire Perimeter
- Structures
- Old Fire Scar
- Contract Units



0 0.5 1 Miles

80 Foot Contours  
1:30,000



## Branch I

## Oregon California

### DIV G

### DIV H

### DIV B

### DIV W

### Div X

### Div V

## Miller Branch IV

LITTLE  
GRIDER-2007

SLINKARB-2008  
FRYING  
PAN-2014

GAP-2016

TO HWY 96