

123°55'W 123°50'W 123°45'W 123°40'W 123°35'W 123°30'W 123°25'W 123°20'W 123°15'W 123°10'W 123°5'W 123°0'W 122°55'W

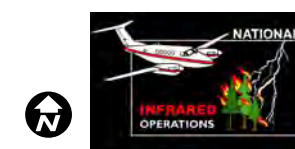
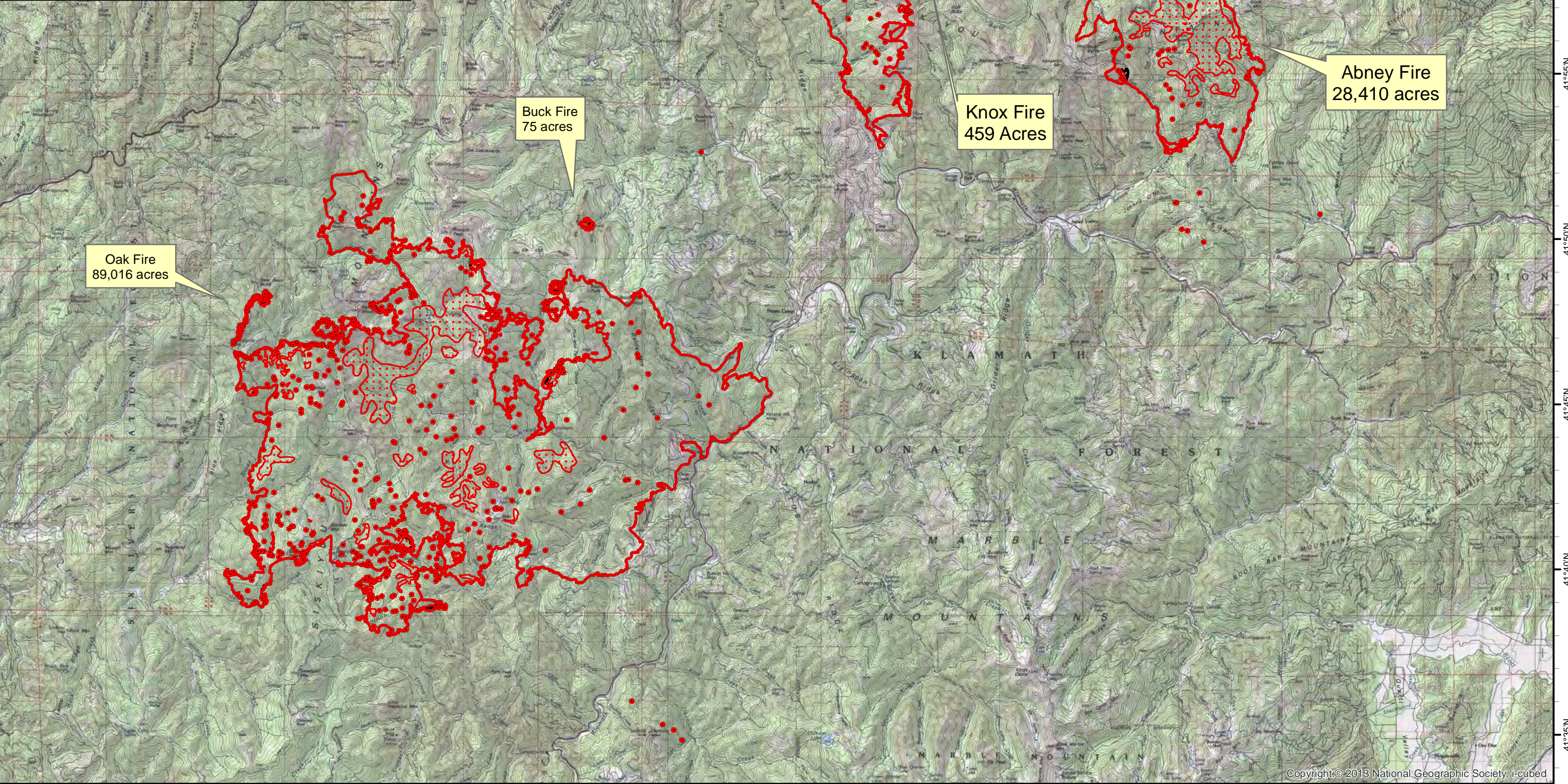
42°0'N  
41°55'N  
41°50'N  
41°45'N  
41°40'N  
41°35'N

**Infrared Map**  
**Eclipse Complex (CA-KNF-006098)**  
**Map Date: 09/15/2017**  
**Imagery Date: 09/15/2017**  
**Imagery Time: 0016 MDT**  
**IR Interpreted Acres: 127,072 acres**  
**IRIN: Tammy Hocut**

- Isolated Heat Sources
- Heat Perimeter
- Intense Heat
- Scattered Heat
- 09/14/2017 2149 Perimeter

NAD 1983 UTM Zone 10N

0 0.75 1.5 3 4.5 6 Miles

Oak Fire  
89,016 acres

Buck Fire  
75 acres

Cedar Fire  
9,112 acres

Knox Fire  
459 Acres

Abney Fire  
28,410 acres