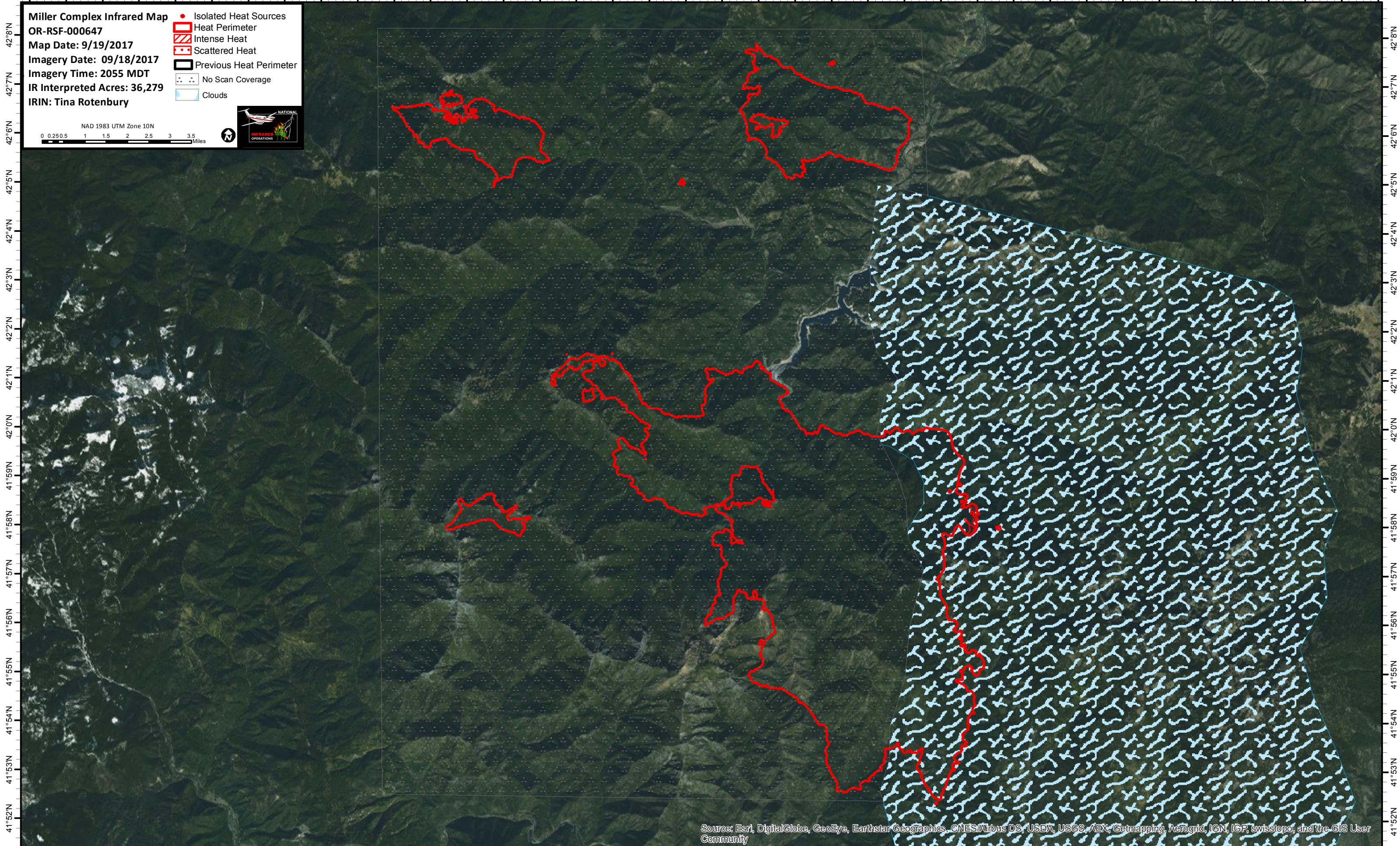



123°30'W 123°28'W 123°26'W 123°24'W 123°22'W 123°20'W 123°18'W 123°16'W 123°14'W 123°12'W 123°10'W 123°9'W 123°8'W 123°7'W 123°6'W 123°5'W 123°4'W 123°3'W 123°2'W 123°1'W 123°0'W 122°59'W 122°57'W 122°55'W 122°53'W

Miller Complex Infrared Map
OR-RSF-000647
Map Date: 9/19/2017
Imagery Date: 09/18/2017
Imagery Time: 2055 MDT
IR Interpreted Acres: 36,279
IRIN: Tina Rotenbury

- Isolated Heat Sources
- ▭ Heat Perimeter
- ▨ Intense Heat
- ▩ Scattered Heat
- ▭ Previous Heat Perimeter
- ⋯ No Scan Coverage
- ☁ Clouds

NAD 1983 UTM Zone 10N
0 0.250.5 1 1.5 2 2.5 3 3.5 Miles



Source: Esri, DigitalGlobe, GeoEye, Earthstar Geographics, CNES/Airbus DS, USDA, USGS, AEX, Getmapping, Aerogrid, IGN, IGP, swisstopo, and the GIS User Community

123°30'W 123°28'W 123°26'W 123°24'W 123°22'W 123°20'W 123°18'W 123°16'W 123°14'W 123°12'W 123°10'W 123°9'W 123°8'W 123°7'W 123°6'W 123°5'W 123°4'W 123°3'W 123°2'W 123°1'W 123°0'W 122°59'W 122°57'W 122°55'W 122°53'W