

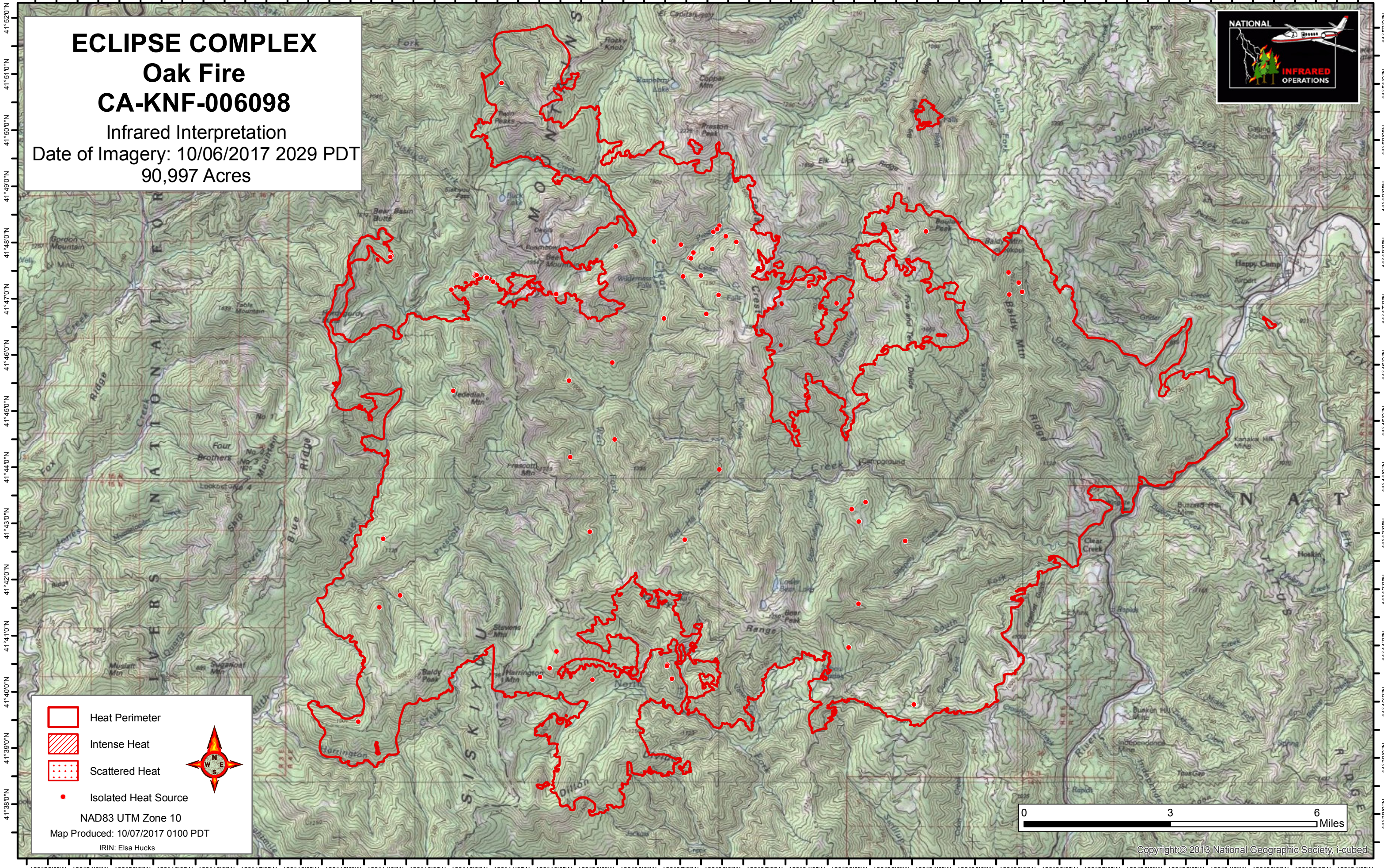
123°52'0"W 123°51'0"W 123°50'0"W 123°49'0"W 123°48'0"W 123°47'0"W 123°46'0"W 123°45'0"W 123°44'0"W 123°43'0"W 123°42'0"W 123°41'0"W 123°40'0"W 123°39'0"W 123°38'0"W 123°37'0"W 123°36'0"W 123°35'0"W 123°34'0"W 123°33'0"W 123°32'0"W 123°31'0"W 123°30'0"W 123°29'0"W 123°28'0"W 123°27'0"W 123°26'0"W 123°25'0"W 123°24'0"W 123°23'0"W 123°22'0"W 123°21'0"W

ECLIPSE COMPLEX

Oak Fire

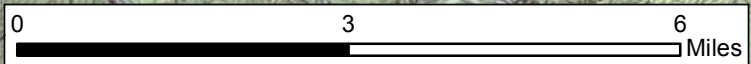
CA-KNF-006098

Infrared Interpretation
Date of Imagery: 10/06/2017 2029 PDT
90,997 Acres



- Heat Perimeter
- Intense Heat
- Scattered Heat
- Isolated Heat Source

NAD83 UTM Zone 10
Map Produced: 10/07/2017 0100 PDT
IRIN: Elsa Hucks



Copyright © 2013 National Geographic Society, i-cubed

123°52'0"W 123°51'0"W 123°50'0"W 123°49'0"W 123°48'0"W 123°47'0"W 123°46'0"W 123°45'0"W 123°44'0"W 123°43'0"W 123°42'0"W 123°41'0"W 123°40'0"W 123°39'0"W 123°38'0"W 123°37'0"W 123°36'0"W 123°35'0"W 123°34'0"W 123°33'0"W 123°32'0"W 123°31'0"W 123°30'0"W 123°29'0"W 123°28'0"W 123°27'0"W 123°26'0"W 123°25'0"W 123°24'0"W 123°23'0"W 123°22'0"W 123°21'0"W