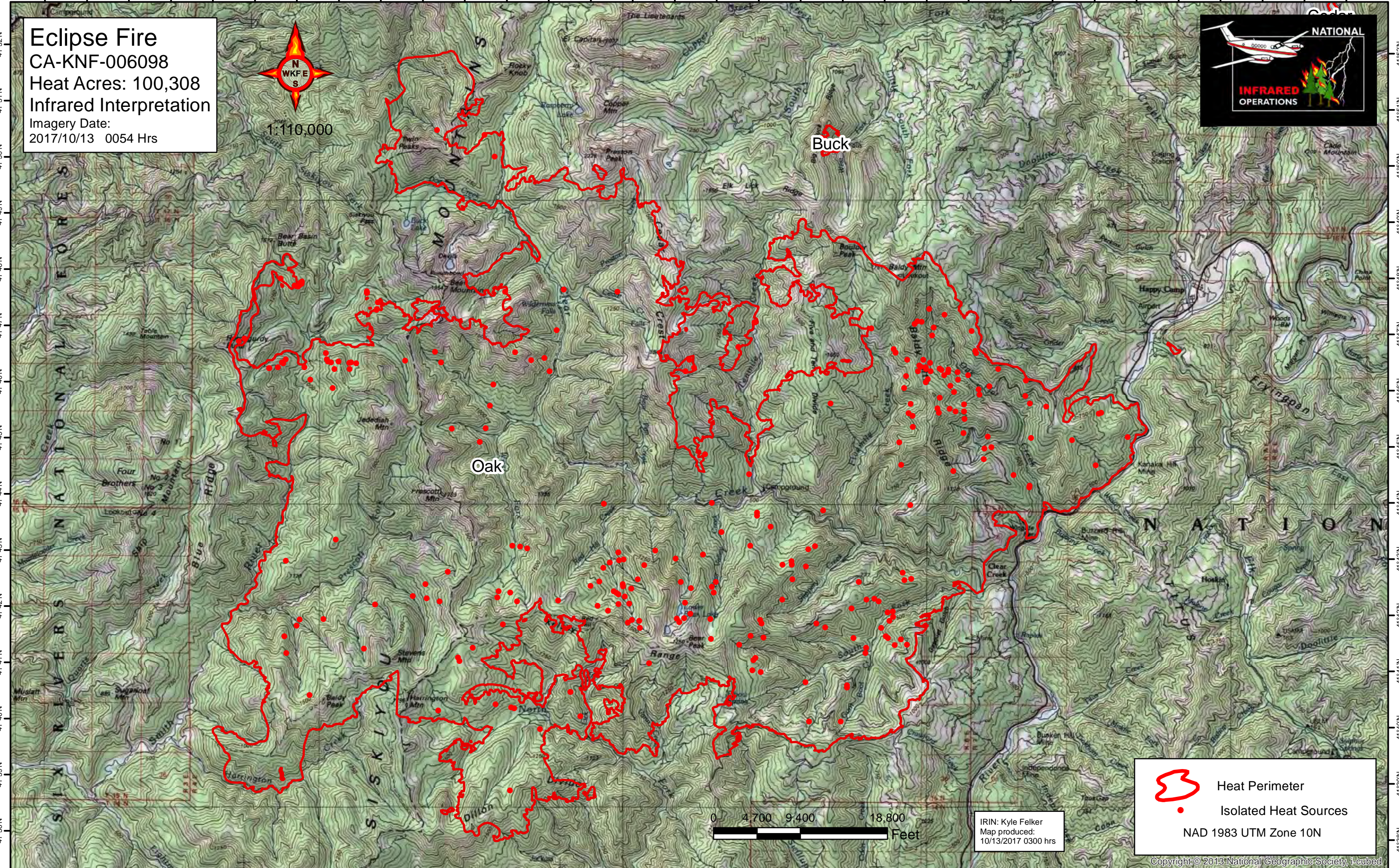




123°50'W 123°49'W 123°48'W 123°47'W 123°46'W 123°45'W 123°44'W 123°43'W 123°42'W 123°41'W 123°40'W 123°39'W 123°38'W 123°37'W 123°36'W 123°35'W 123°34'W 123°33'W 123°32'W 123°31'W 123°30'W 123°29'W 123°28'W 123°27'W 123°26'W 123°25'W 123°24'W 123°23'W 123°22'W 123°21'W 123°20'W 123°19'W

Eclipse Fire
CA-KNF-006098
Heat Acres: 100,308
Infrared Interpretation
Imagery Date:
2017/10/13 0054 Hrs



IRIN: Kyle Felker
Map produced:
10/13/2017 0300 hrs

-  Heat Perimeter
-  Isolated Heat Sources

NAD 1983 UTM Zone 10N

123°50'W 123°49'W 123°48'W 123°47'W 123°46'W 123°45'W 123°44'W 123°43'W 123°42'W 123°41'W 123°40'W 123°39'W 123°38'W 123°37'W 123°36'W 123°35'W 123°34'W 123°33'W 123°32'W 123°31'W 123°30'W 123°29'W 123°28'W 123°27'W 123°26'W 123°25'W 123°24'W 123°23'W 123°22'W 123°21'W 123°20'W 123°19'W