

- Hot Spot - Significant Priority (Considerable Threat to Fireline)
- Hot Spot - Moderate Priority (Possible Threat to Fireline)
- 🔥 Live Fire - Uncontained Spot Fire or Fire Front

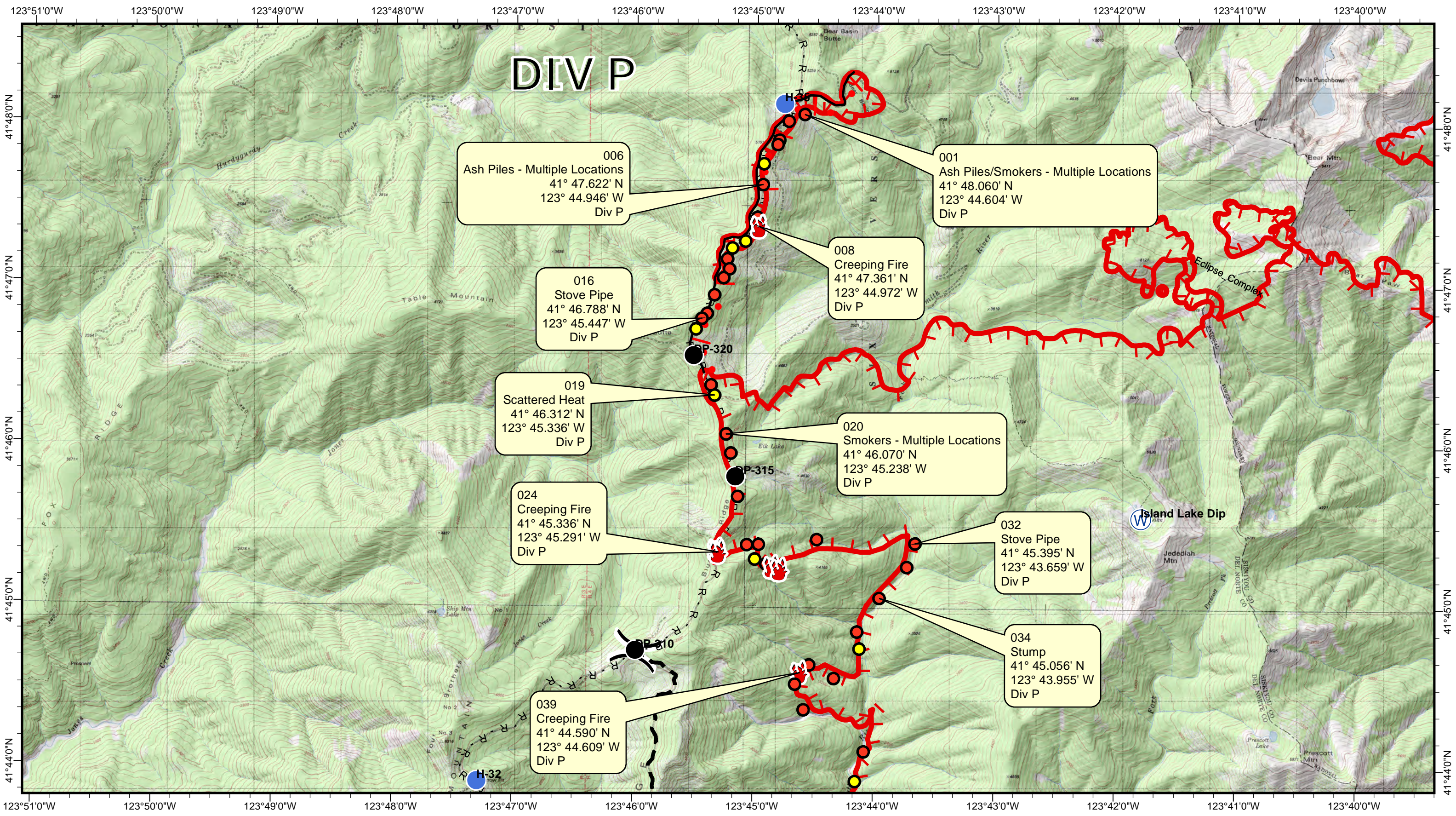
# Eclipse Complex

## CA-KNF-006098

0 0.5 1 2 3 4 5 Miles

**INDEX - OAK FIRE**  
Data Collected: 20170911 @ 0900  
Datum: WGS 84





# DIV P

006  
Ash Piles - Multiple Locations  
41° 47.622' N  
123° 44.946' W  
Div P

001  
Ash Piles/Smokers - Multiple Locations  
41° 48.060' N  
123° 44.604' W  
Div P

016  
Stove Pipe  
41° 46.788' N  
123° 45.447' W  
Div P

008  
Creeping Fire  
41° 47.361' N  
123° 44.972' W  
Div P

019  
Scattered Heat  
41° 46.312' N  
123° 45.336' W  
Div P

020  
Smokers - Multiple Locations  
41° 46.070' N  
123° 45.238' W  
Div P

024  
Creeping Fire  
41° 45.336' N  
123° 45.291' W  
Div P

032  
Stove Pipe  
41° 45.395' N  
123° 43.659' W  
Div P

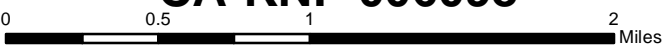
039  
Creeping Fire  
41° 44.590' N  
123° 44.609' W  
Div P

034  
Stump  
41° 45.056' N  
123° 43.955' W  
Div P



- Hot Spot - Significant Priority (Considerable Threat to Fireline)
- Hot Spot - Moderate Priority (Possible Threat to Fireline)
- 🔥 Live Fire - Uncontained Spot Fire or Fire Front

## Eclipse Complex CA-KNF-006098



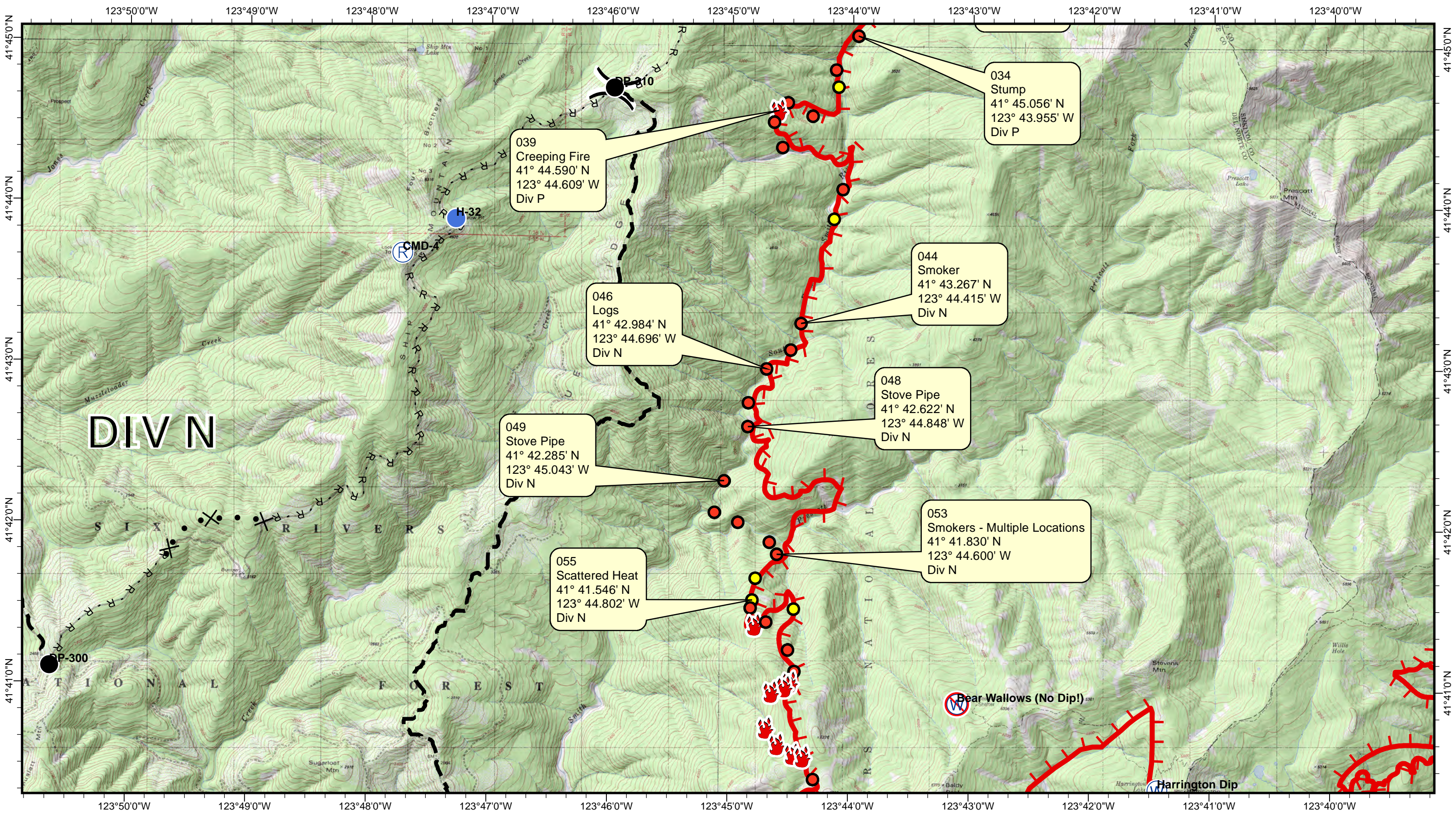
### DIV P - OAK FIRE

Data Collected: 20170911 @ 0900

Datum: WGS 84



Sept. 11, 2017



039  
Creeping Fire  
41° 44.590' N  
123° 44.609' W  
Div P

034  
Stump  
41° 45.056' N  
123° 43.955' W  
Div P

044  
Smoker  
41° 43.267' N  
123° 44.415' W  
Div N

046  
Logs  
41° 42.984' N  
123° 44.696' W  
Div N

048  
Stove Pipe  
41° 42.622' N  
123° 44.848' W  
Div N

049  
Stove Pipe  
41° 42.285' N  
123° 45.043' W  
Div N

053  
Smokers - Multiple Locations  
41° 41.830' N  
123° 44.600' W  
Div N

055  
Scattered Heat  
41° 41.546' N  
123° 44.802' W  
Div N

**DIV N**

# Eclipse Complex

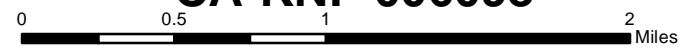
## CA-KNF-006098

### DIV P - OAK FIRE

Data Collected: 20170911 @ 0900

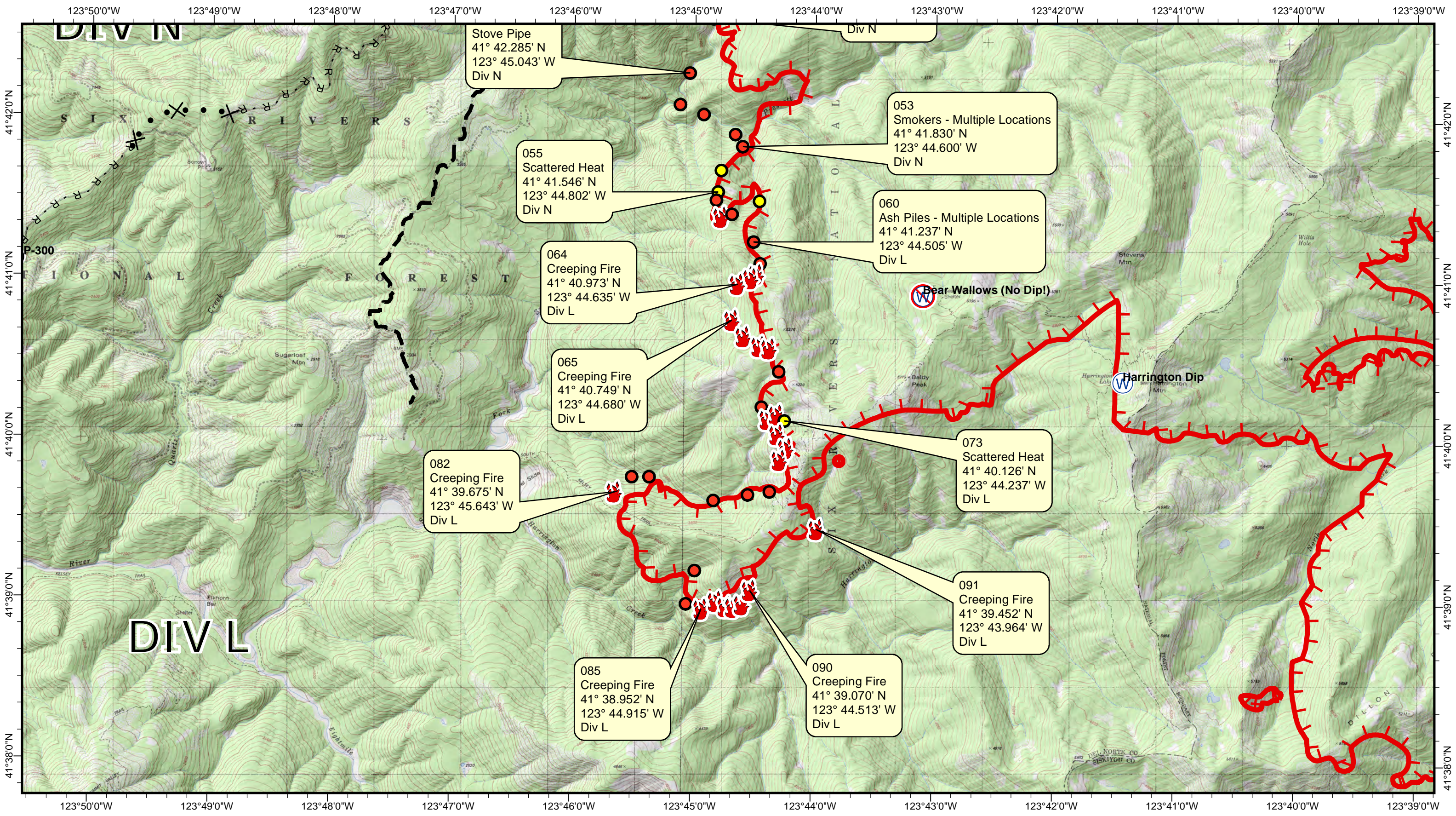
Datum: WGS 84

- Hot Spot - Significant Priority (Considerable Threat to Fireline)
- Hot Spot - Moderate Priority (Possible Threat to Fireline)
- 🔥 Live Fire - Uncontained Spot Fire or Fire Front



VETS  
Cost Effective Infrared  
Aspen Helicopters

Sept. 11, 2017



# Eclipse Complex

## CA-KNF-006098

0 0.5 1 2 Miles

**DIV L - OAK FIRE**  
Data Collected: 20170911 @ 0900  
Datum: WGS 84



**VETS IR Hotspots 20170911 @ 0930**  
**Eclipse Complex - Oak Fire (West Flank)**




ident	Lon	Lat	IR_Type	Label	Division
001	123° 44.604' W	41° 48.060' N	Significant	Ash Piles/Smokers - Multiple Locations	Div P
002	123° 44.733' W	41° 48.019' N	Significant	Stumps - Multiple Locations	Div P
003	123° 44.812' W	41° 47.900' N	Significant	Ash Piles/Smokers - Multiple Locations	Div P
004	123° 44.825' W	41° 47.872' N	Significant	Ash Piles/Smokers - Multiple Locations	Div P
005	123° 44.939' W	41° 47.753' N	Moderate	Scattered Heat	Div P
006	123° 44.946' W	41° 47.622' N	Significant	Ash Piles - Multiple Locations	Div P
007	123° 44.988' W	41° 47.419' N	Significant	Logs	Div P
008	123° 44.972' W	41° 47.361' N	Open	Creeping Fire	Div P
009	123° 45.088' W	41° 47.271' N	Moderate	Scattered Heat	Div P
010	123° 45.197' W	41° 47.227' N	Moderate	Scattered Heat	Div P
011	123° 45.237' W	41° 47.159' N	Significant	Ash Piles/Smokers - Multiple Locations	Div P
012	123° 45.219' W	41° 47.097' N	Significant	Stove Pipe	Div P
013	123° 45.268' W	41° 47.043' N	Significant	Ash Piles/Smokers - Multiple Locations	Div P
014	123° 45.342' W	41° 46.935' N	Significant	Ash Piles - Multiple Locations	Div P
015	123° 45.403' W	41° 46.820' N	Significant	Ash Piles/Smokers - Multiple Locations	Div P
016	123° 45.447' W	41° 46.788' N	Significant	Stove Pipe	Div P
017	123° 45.494' W	41° 46.723' N	Moderate	Scattered Heat	Div P
018	123° 45.366' W	41° 46.374' N	Significant	Logs	Div P
019	123° 45.336' W	41° 46.312' N	Moderate	Scattered Heat	Div P
020	123° 45.238' W	41° 46.070' N	Significant	Smokers - Multiple Locations	Div P
021	123° 45.197' W	41° 45.951' N	Significant	Ash Piles/Smokers - Multiple Locations	Div P
022	123° 45.138' W	41° 45.682' N	Significant	Logs	Div P
023	123° 45.306' W	41° 45.351' N	Open	Creeping Fire	Div P
024	123° 45.291' W	41° 45.336' N	Open	Creeping Fire	Div P
025	123° 45.057' W	41° 45.383' N	Significant	Smokers - Multiple Locations	Div P
026	123° 44.961' W	41° 45.385' N	Significant	Tree	Div P
027	123° 44.990' W	41° 45.295' N	Moderate	Scattered Heat	Div P
028	123° 44.899' W	41° 45.266' N	Significant	Ash Piles/Smokers - Multiple Locations	Div P
029	123° 44.845' W	41° 45.245' N	Open	Creeping Fire	Div P
030	123° 44.782' W	41° 45.229' N	Open	Creeping Fire	Div P
031	123° 44.477' W	41° 45.419' N	Significant	Ash Pile - Multiple Locations	Div P
032	123° 43.659' W	41° 45.395' N	Significant	Stove Pipe	Div P
033	123° 43.727' W	41° 45.249' N	Significant	Logs	Div P
034	123° 43.955' W	41° 45.056' N	Significant	Stump	Div P
035	123° 44.138' W	41° 44.845' N	Significant	Stumps - Multiple Locations	Div P
036	123° 44.117' W	41° 44.739' N	Moderate	Scattered Heat	Div P
037	123° 44.329' W	41° 44.555' N	Significant	Stove Pipe	Div P
038	123° 44.535' W	41° 44.639' N	Significant	Ash Piles/Smokers - Multiple Locations	Div P
039	123° 44.609' W	41° 44.590' N	Open	Creeping Fire	Div P
040	123° 44.649' W	41° 44.518' N	Significant	Tree	Div P
041	123° 44.578' W	41° 44.360' N	Significant	Tree	Div P
042	123° 44.076' W	41° 44.101' N	Significant	Stump	Div N
043	123° 44.146' W	41° 43.915' N	Moderate	Scattered Heat	Div N
044	123° 44.415' W	41° 43.267' N	Significant	Smoker	Div N
045	123° 44.499' W	41° 43.102' N	Significant	Smoker	Div N
046	123° 44.696' W	41° 42.984' N	Significant	Logs	Div N
047	123° 44.847' W	41° 42.772' N	Significant	Stove Pipe	Div N
048	123° 44.848' W	41° 42.622' N	Significant	Stove Pipe	Div N
049	123° 45.043' W	41° 42.285' N	Significant	Stove Pipe	Div N
050	123° 45.122' W	41° 42.089' N	Significant	Ash Piles - Multiple Locations	Div N
051	123° 44.926' W	41° 42.027' N	Significant	Stump	Div N
052	123° 44.662' W	41° 41.904' N	Significant	Smokers - Multiple Locations	Div N
053	123° 44.600' W	41° 41.830' N	Significant	Smokers - Multiple Locations	Div N
054	123° 44.778' W	41° 41.681' N	Moderate	Scattered Heat	Div N
055	123° 44.802' W	41° 41.546' N	Moderate	Scattered Heat	Div N
056	123° 44.816' W	41° 41.495' N	Significant	Smoker	Div N
057	123° 44.776' W	41° 41.390' N	Open	Creeping Fire	Div N
058	123° 44.686' W	41° 41.408' N	Significant	Smoker	Div N
059	123° 44.458' W	41° 41.491' N	Moderate	Scattered Heat	Div N
060	123° 44.505' W	41° 41.237' N	Significant	Ash Piles - Multiple Locations	Div L
061	123° 44.449' W	41° 41.102' N	Significant	Stumps - Multiple Locations	Div L
062	123° 44.479' W	41° 41.035' N	Open	Creeping Fire	Div L
063	123° 44.524' W	41° 41.007' N	Open	Creeping Fire	Div L
064	123° 44.635' W	41° 40.973' N	Open	Creeping Fire	Div L
065	123° 44.680' W	41° 40.749' N	Open	Creeping Fire	Div L
066	123° 44.583' W	41° 40.648' N	Open	Creeping Fire	Div L
067	123° 44.452' W	41° 40.588' N	Open	Creeping Fire	Div L
068	123° 44.370' W	41° 40.573' N	Open	Creeping Fire	Div L
069	123° 44.286' W	41° 40.431' N	Significant	Stumps - Multiple Locations	Div L
070	123° 44.429' W	41° 40.211' N	Significant	Stove Pipe	Div L
071	123° 44.379' W	41° 40.135' N	Open	Creeping Fire	Div L
072	123° 44.301' W	41° 40.162' N	Open	Creeping Fire	Div L
073	123° 44.237' W	41° 40.126' N	Moderate	Scattered Heat	Div L

**VETS IR Hotspots 20170911 @ 0930**  
**Eclipse Complex - Oak Fire (West Flank)**

074	123° 44.297' W	41° 40.039' N	Open	Creeping Fire	Div L
075	123° 44.224' W	41° 39.954' N	Open	Creeping Fire	Div L
076	123° 44.277' W	41° 39.881' N	Open	Creeping Fire	Div L
077	123° 44.356' W	41° 39.684' N	Significant	Tree	Div L
078	123° 44.536' W	41° 39.665' N	Significant	Stove Pipe	Div L
079	123° 44.821' W	41° 39.627' N	Significant	Stove Pipe	Div L
080	123° 45.356' W	41° 39.773' N	Significant	Ash Pile - Multiple Locations	Div L
081	123° 45.500' W	41° 39.772' N	Significant	Smokers - Multiple Locations	Div L
082	123° 45.643' W	41° 39.675' N	Open	Creeping Fire	Div L
083	123° 44.973' W	41° 39.191' N	Significant	Stove Pipe	Div L
084	123° 45.043' W	41° 38.984' N	Significant	Ash Piles/Smokers - Multiple Locations	Div L
085	123° 44.915' W	41° 38.952' N	Open	Creeping Fire	Div L
086	123° 44.795' W	41° 39.000' N	Open	Creeping Fire	Div L
087	123° 44.714' W	41° 38.967' N	Open	Creeping Fire	Div L
088	123° 44.650' W	41° 38.964' N	Open	Creeping Fire	Div L
089	123° 44.578' W	41° 38.981' N	Open	Creeping Fire	Div L
090	123° 44.513' W	41° 39.070' N	Open	Creeping Fire	Div L
091	123° 43.964' W	41° 39.452' N	Open	Creeping Fire	Div L



## INFRARED MAP LEGEND

-  Hot Spot - Moderate Priority (Possible Threat to Fireline)
-  Hot Spot - Significant Priority (Considerable Threat to Fireline)
-  Live Fire - Uncontained Spot Fire or Fire Front

GPS Coordinates are in Degrees & Decimal Minutes (DD° MM.mmmm')

Datum is WGS 84 (unless otherwise noted on map)

Ex. 34° 04.405  
-118° 14.414

Date and Time is when the intelligence was gathered

Heat Sources are normally acquired within a 400 foot strip, 200 feet inside and 200 feet outside the fire line or fire front (wider strips are flown as necessary and are labeled on infrared map).

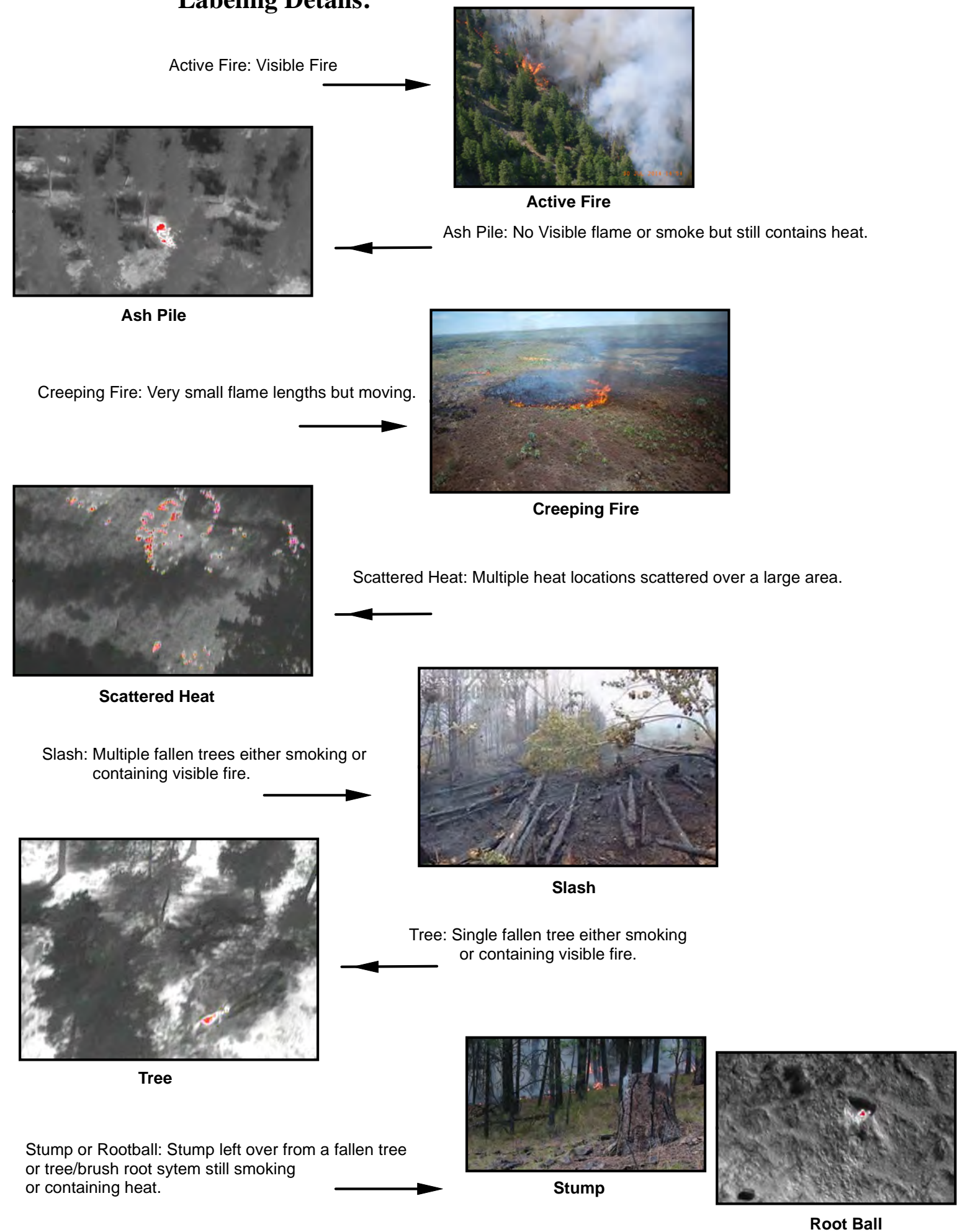
## LIMITS TO INFRARED AND GPS INFORMATION

Under the best conditions heat sources less than 4 to 6 inches in diameter are inconsistent.

Very Small Heat sources under heavy canopy or in large rock piles are difficult to verify.

Accuracy of GPS coordinates is within 50 feet, 90% of the time.

## Labeling Details:



Root Ball