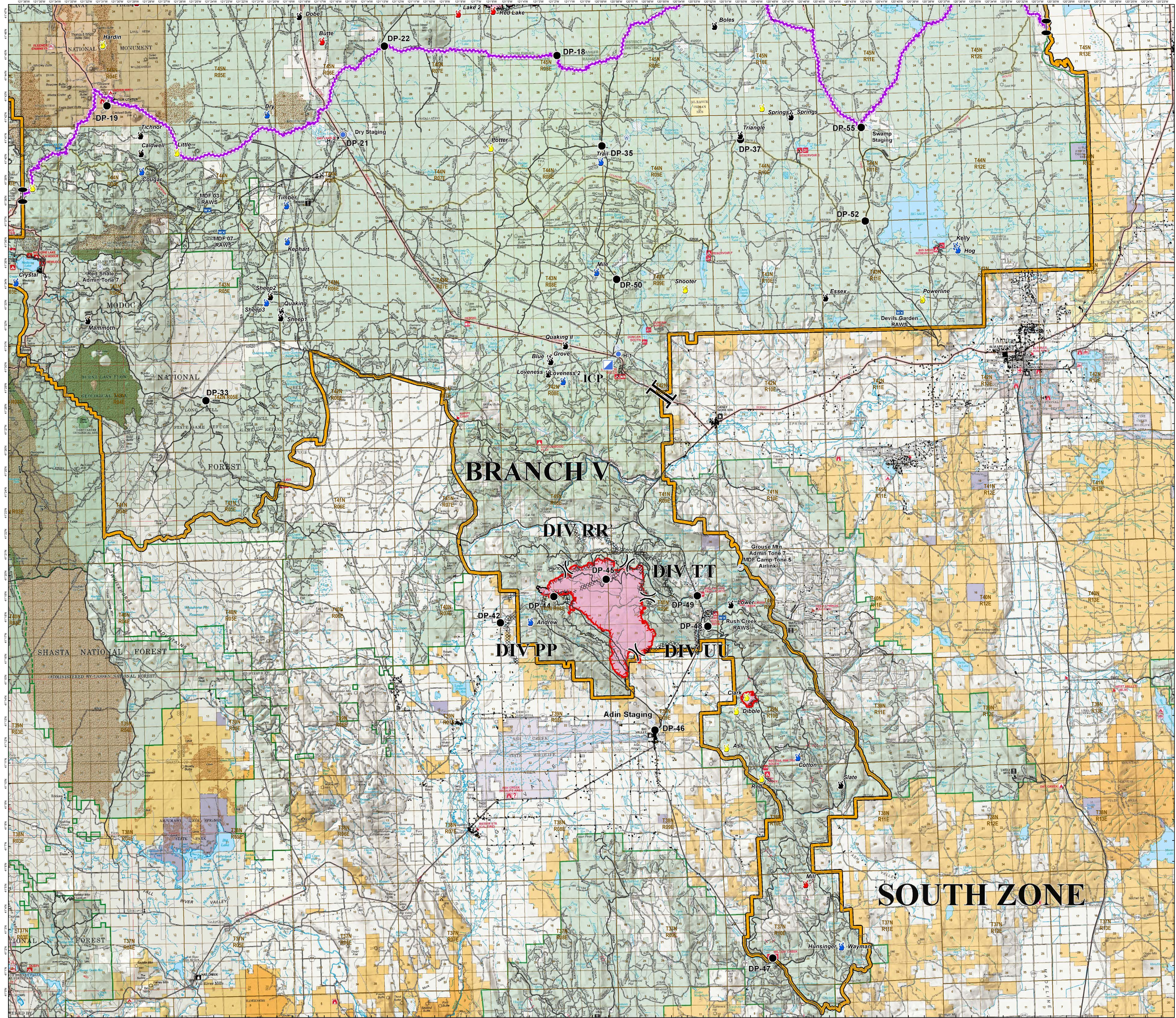
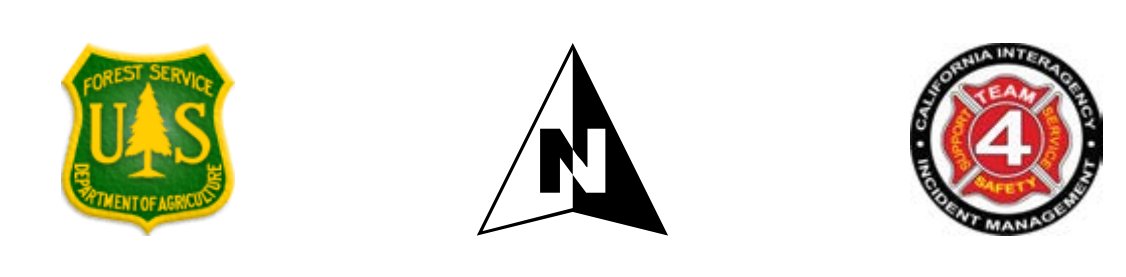
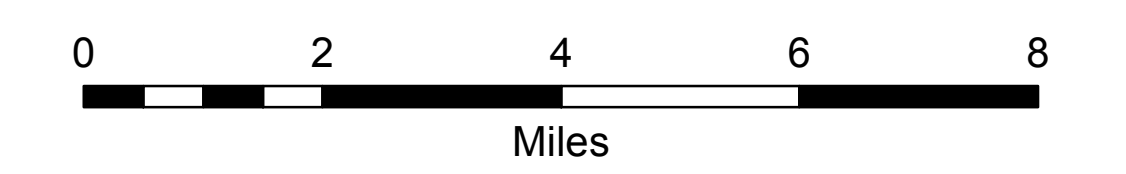


BRIEFING MAP
SOUTH ZONE
AUGUST 2, 2017
DAY SHIFT

- DROP POINT
- ▣ INCIDENT COMMAND POST
- ⊕ HELIBASE
- HELISPOT
- ☒ MOBILE WEATHER UNIT
- ⊕ REPEATER
- ⊕ SPOT FIRE
- ⊕ STAGING AREA
- ⊕ WATER SOURCE
-) DIVISION BREAK
-] BRANCH BREAK
- ZONE BREAK
- UNCONTROLLED FIRE EDGE
- COMPLETED LINE
- ⊗ COMPLETED DOZER LINE
- COMPLETED HAND LINE
- ROAD AS COMPLETED LINE
- FIRE PERIMETER
- ▭ INITIAL ATTACK AREA
- STRUCTURES
- ZONE BOUNDARY
- IGNITION STATUS
 - 🔥 ACTIVE
 - 🟡 CONTAINED
 - 🟢 OUT
 - 🔵 UNABLE TO LOCATE



MOBILE MAP



SOUTH ZONE