

**MODOC JULY COMPLEX  
CA-MDF-000671  
COVE FIRE  
AUGUST 5, 2017**

- DROP POINT
- ☒ MOBILE WEATHER UNIT
- Ⓜ REPEATER
- ⦿ SPOT FIRE
- Ⓢ STAGING AREA
- Ⓜ WATER SOURCE
- ) DIVISION BREAK
- UNCONTROLLED FIRE EDGE
- COMPLETED LINE
- ⊘ COMPLETED DOZER LINE
- COMPLETED HAND LINE
- ROAD AS COMPLETED LINE
- STRUCTURES
- TRANSMISSION SUBSTATION
- ⊗ INTERCEPT POINTS
- TRANSMISSION LINES
- SELECTED PARCEL OWNERSHIP  
■ SIERRA, PACIFIC INDUSTRIES
- IGNITION STATUS
  - 🔥 CONTAINED
  - 🔥 OUT
  - 🔥 UNABLE TO LOCATE



# BRANCH V

## DIV RR

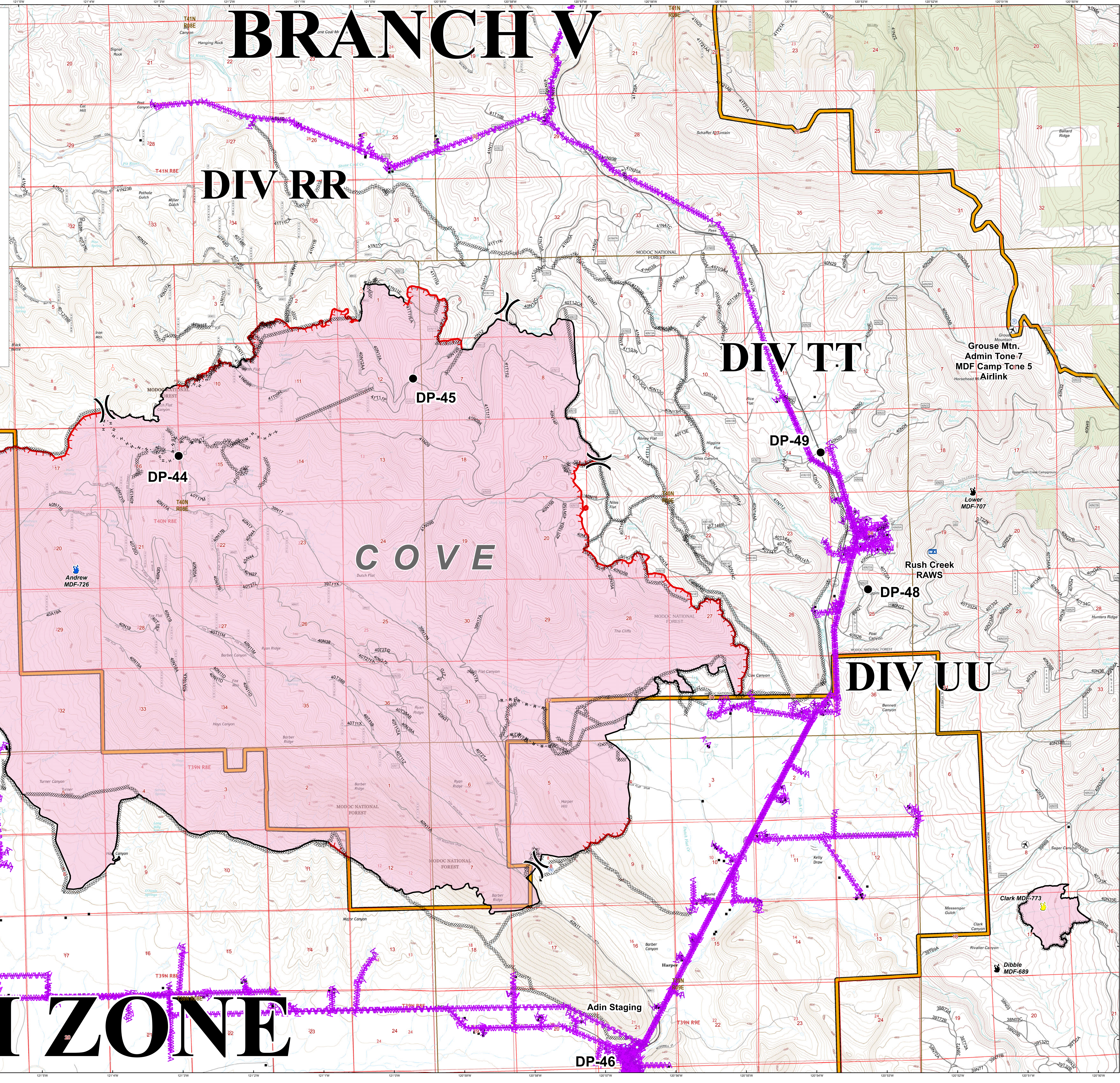
## DIV TT

# COVE

## DIV UU

## DIV PP

# SOUTH ZONE



Grouse Mtn.  
Admin Tone 7  
MDF Camp Tone 5  
Airlink

Lower  
MDF-707

Rush Creek  
RAWS

Clark MDF-773

Dibble  
MDF-689

Adin Staging

DP-44

DP-45

DP-49

DP-48

DP-46

Andrew  
MDF-726