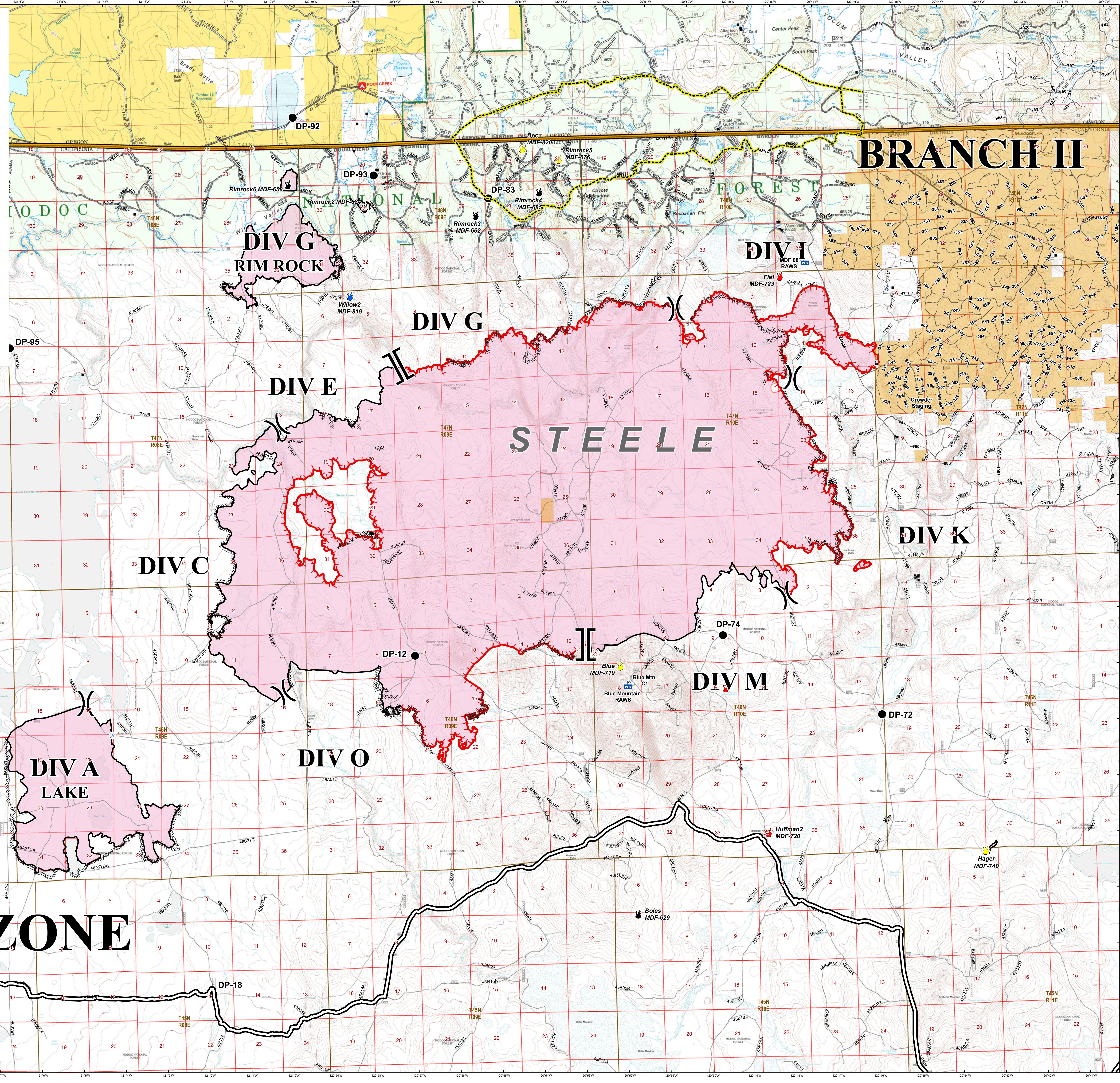


MODOC JULY COMPLEX CA-MDF-000671

STEELE FIRE AUGUST 5, 2017

- DROP POINT
- ☒ MOBILE WEATHER UNIT
- Ⓜ REPEATER
- Ⓢ SPOT FIRE
- Ⓢ STAGING AREA
- Ⓢ WATER SOURCE
- () DIVISION BREAK
- [] BRANCH BREAK
- UNCONTROLLED FIRE EDGE
- COMPLETED LINE
- Ⓜ COMPLETED DOZER LINE
- STRUCTURES
- COLLINS TIMBER ROADS
- ODF CONTINGENCY LINES
- SELECTED PARCEL OWNERSHIP
- COLLINS TIMBER
- 🔥 IGNITION STATUS
 - 🔥 ACTIVE
 - 🔥 CONTAINED
 - 🔥 OUT
 - 🔥 UNABLE TO LOCATE

Scale: 0 1/4 1/2 3/4 1 Miles



BRANCH II

BRANCH I

NORTH ZONE