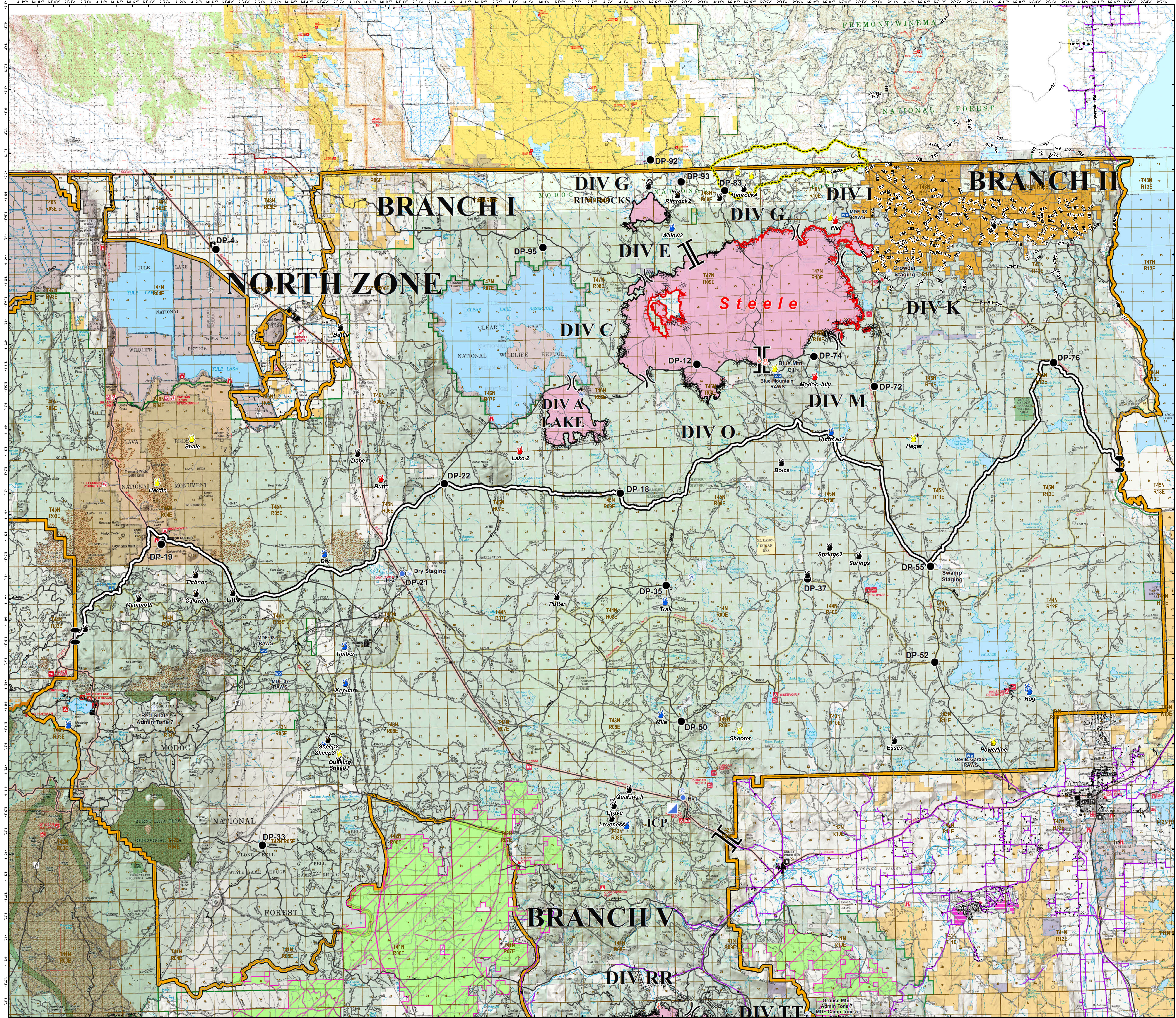


**MODOC
JULY COMPLEX
CA-MDF-000671**

**BRIEFING MAP
NORTH ZONE
AUGUST 6, 2017**



- DROP POINT
- ▣ INCIDENT COMMAND POST
- ⊕ HELIBASE
- ⊕ HELISPOT
- ⊕ MOBILE WEATHER UNIT
- ⊕ REPEATER
- ⊕ SPOT FIRE
- ⊕ STAGING AREA
- ⊕ WATER SOURCE
- ⊕ DIVISION BREAK
- ⊕ BRANCH BREAK
- ⊕ ZONE BREAK
- ⊕ INTERCEPT POINTS
- SUBSTATION
- UNCONTROLLED FIRE EDGE
- COMPLETED LINE
- ⊗ COMPLETED DOZER LINE
- COMPLETED HAND LINE
- ROAD AS COMPLETED LINE
- ▭ FIRE PERIMETER
- ▭ INITIAL ATTACK AREA
- TRANSMISSION LINES
- STRUCTURES
- ZONE BOUNDARY
- ODF CONTINGENCY LINES
- ▭ Cal Pines
- ▭ Collins Timber
- ▭ Sierra, Pacific Industries
- IGNITION STATUS
- ⊕ ACTIVE
- ⊕ CONTAINED
- ⊕ OUT
- ⊕ UNABLE TO LOCATE

MOBILE MAP

0 2 4 6 8
Miles

Map Datum: NAD 83 UTM Zone 10
860317 31626 AM
Ops_Briefing_Data\DriverPages_Zone_Area_E_Lines_2017_ModocJulyComplex_CA-MDF-000671_MMDD.mxd