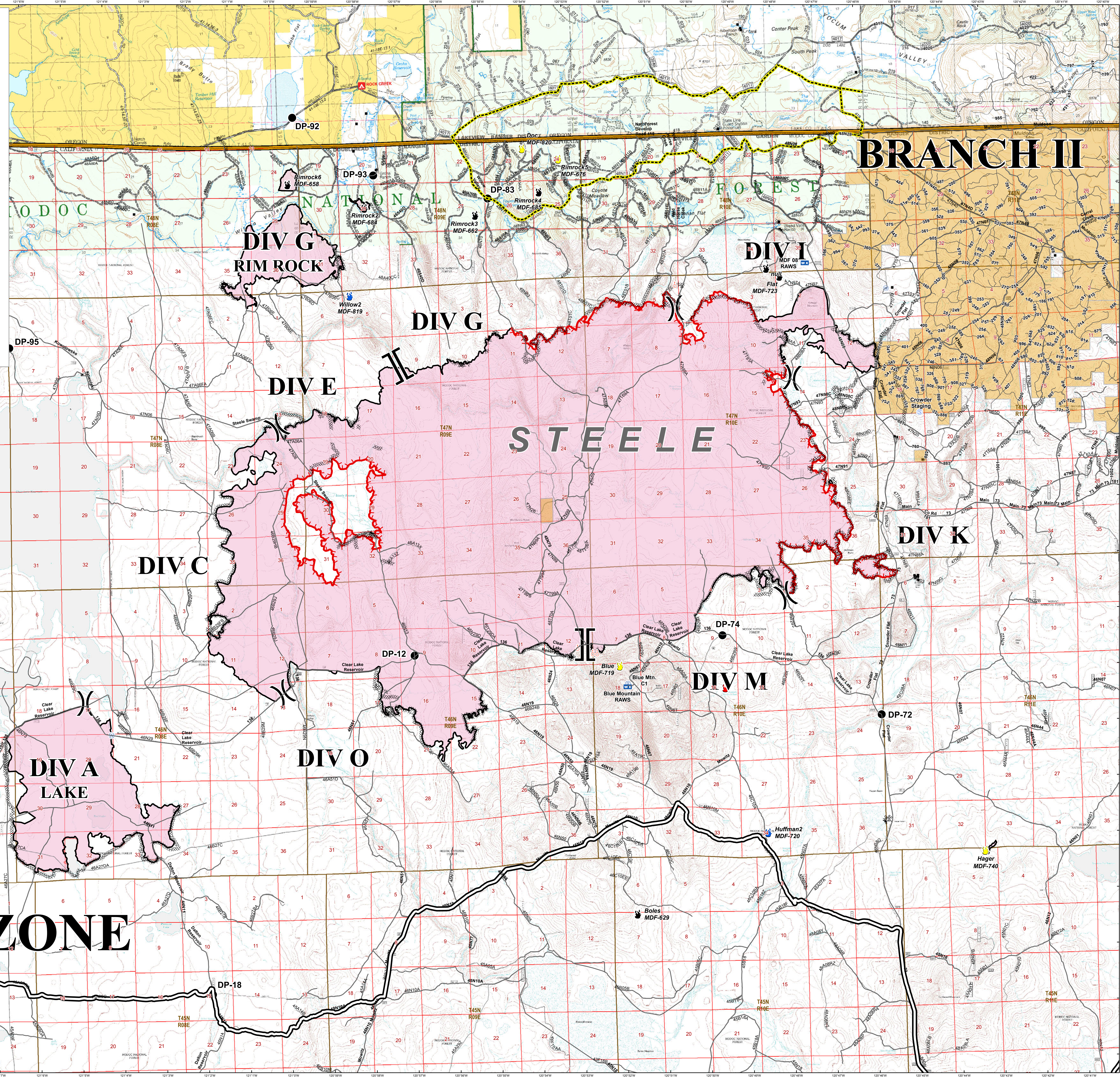
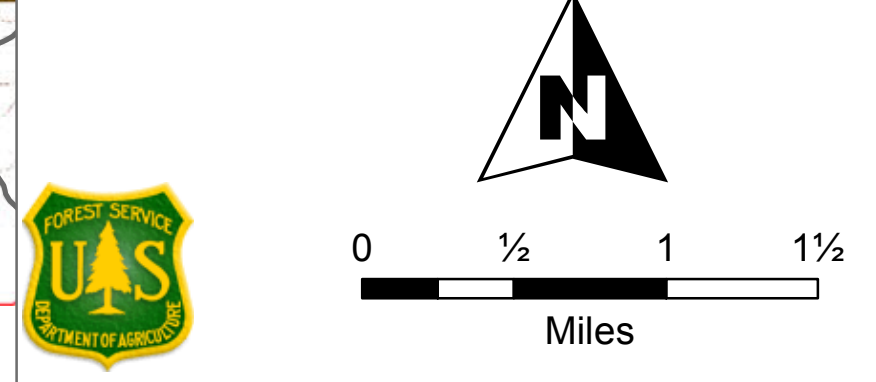


**MODOC JULY COMPLEX
CA-MDF-000671
STEELE FIRE
AUGUST 7, 2017**

- DROP POINT
- ☒ MOBILE WEATHER UNIT
- ⊕ REPEATER
- ⊙ SPOT FIRE
- ⊙ STAGING AREA
- ⊙ WATER SOURCE
- ⎓ DIVISION BREAK
- ⎓ BRANCH BREAK
- UNCONTROLLED FIRE EDGE
- COMPLETED LINE
- ⊖ COMPLETED DOZER LINE
- ⋯ COMPLETED HAND LINE
- ⊖ ROAD AS COMPLETED LINE
- STRUCTURES
- Collins Timber Roads
- ⊖ ODF Contingency Lines
- SELECTED PARCEL OWNERSHIP
- COLLINS TIMBER
- IGNITION STATUS
- 🔥 ACTIVE
- 🔥 CONTAINED
- 🔥 OUT
- 🔥 UNABLE TO LOCATE



BRANCH II

BRANCH I

STEELE

NORTH ZONE