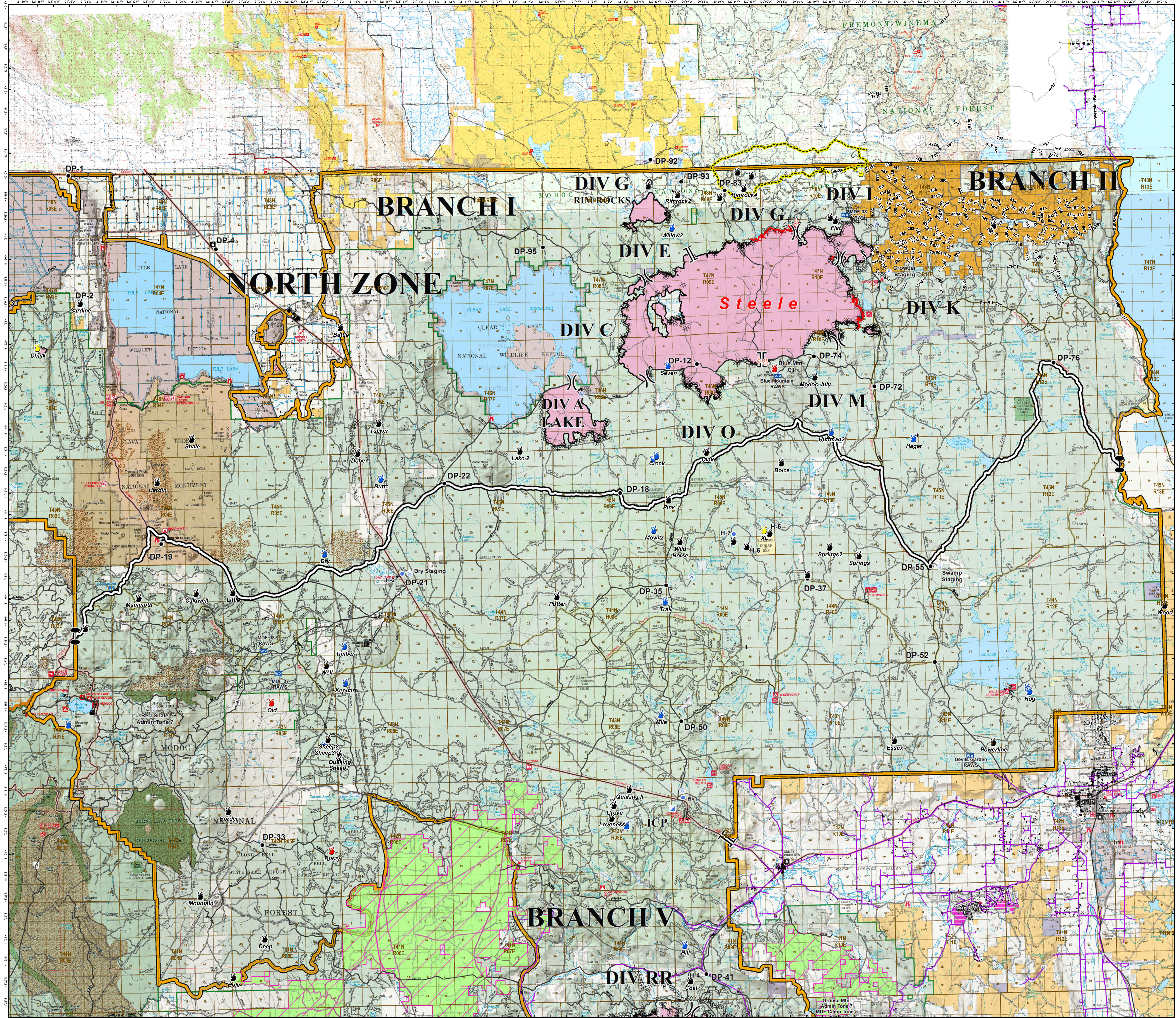


**MODOC
JULY COMPLEX
CA-MDF-000671**
BRIEFING MAP
NORTH ZONE
AUGUST 12, 2017



- || BRANCH BREAK
-) DIVISION BREAK
- DROP POINT
- H HELIBASE
- HELISPOT
- ▲ INCIDENT COMMAND POST
- ☒ MOBILE WEATHER UNIT
- SPOT FIRE (OUT)
- ⊕ REPEATER
- SPOT FIRE
- ⊕ STAGING AREA
- ⊕ WATER SOURCE
- ZONE BREAK
- ⊕ INTERCEPT POINTS
- SUBSTATION
- UNCONTROLLED FIRE EDGE
- COMPLETED LINE
- ⊗ COMPLETED DOZER LINE
- COMPLETED HAND LINE
- R-R ROAD AS COMPLETED LINE
- FIRE PERIMETER
- INITIAL ATTACK AREA
- TRANSMISSION LINES
- STRUCTURES
- ZONE BOUNDARY
- ODF CONTINGENCY LINES
- Cal Pines
- Collins Timber
- Sierra, Pacific Industries
- IGNITION STATUS
- ACTIVE
- CONTAINED
- OUT
- UNABLE TO LOCATE

MOBILE MAP

0 2 4 6 8
Miles