

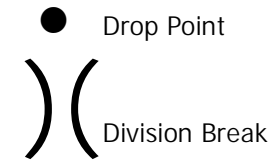
IAP MAP

PARKER2
CA-MDF-000862
AUGUST 5, 2017

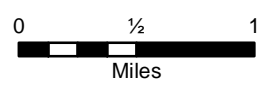
DAY SHIFT

INDEX PAGE

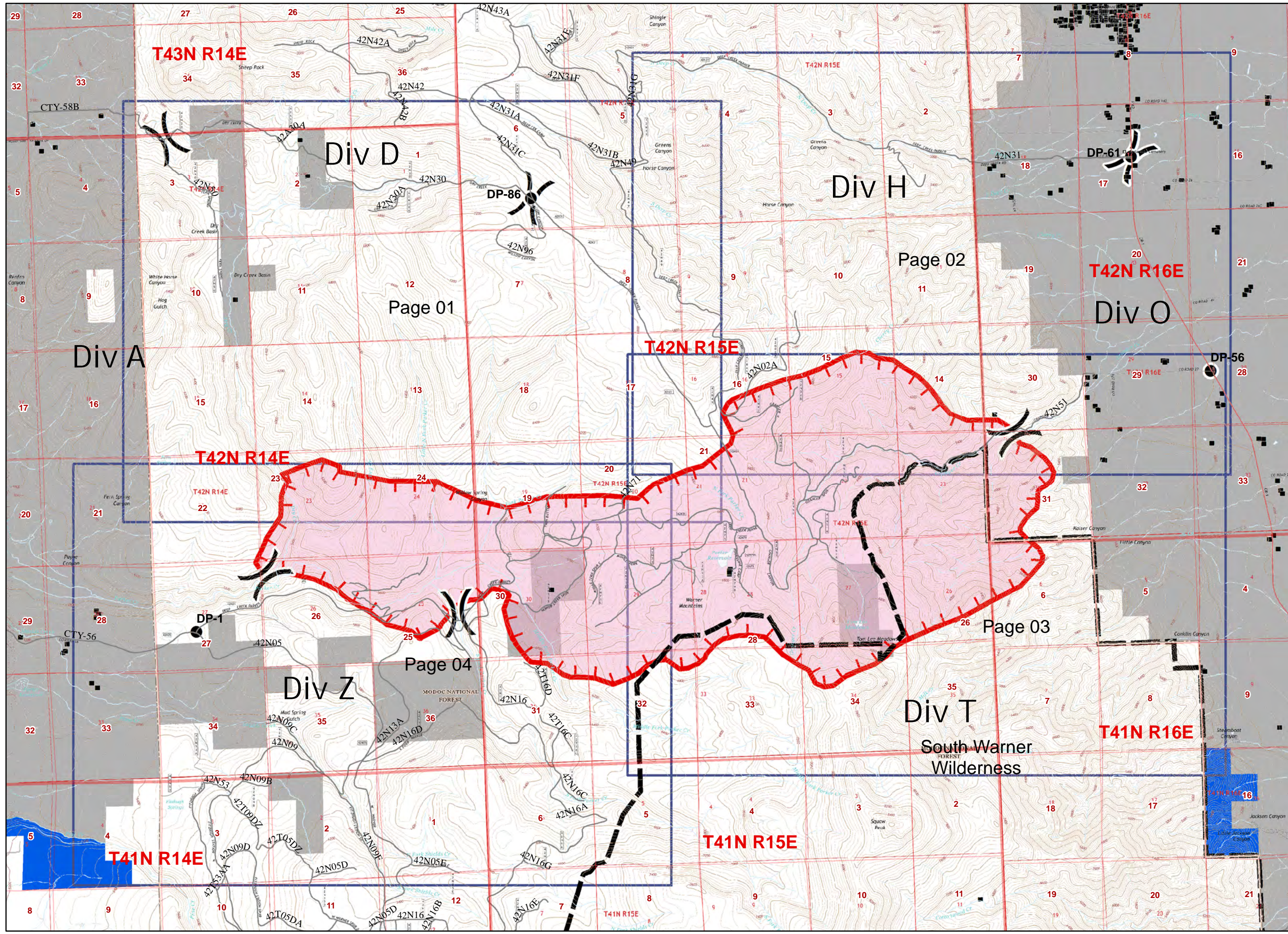
APPROX 7,800 ACRES
AS OF 8/4 @ 2100



- Uncontrolled Fire Edge (red dashed line)
- Structures (black square)
- Wilderness (grey area)
- USFS (black outline)
- Land Status
 - Federal (light blue)
 - State (dark blue)
 - Private (grey)



UTM ZONE 10 NAD 83



IAP MAP

PARKER2
CA-MDF-000862
AUGUST 5, 2017

DAY SHIFT

PAGE 01 OF 4

APPROX 7,800 ACRES
AS OF 8/4 @ 2100

- Drop Point
-) (Division Break

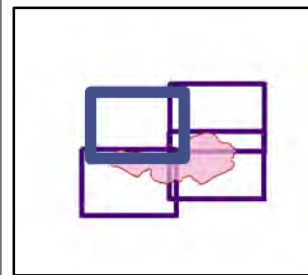
- ▬ Uncontrolled Fire Edge

- Structures

Land Status

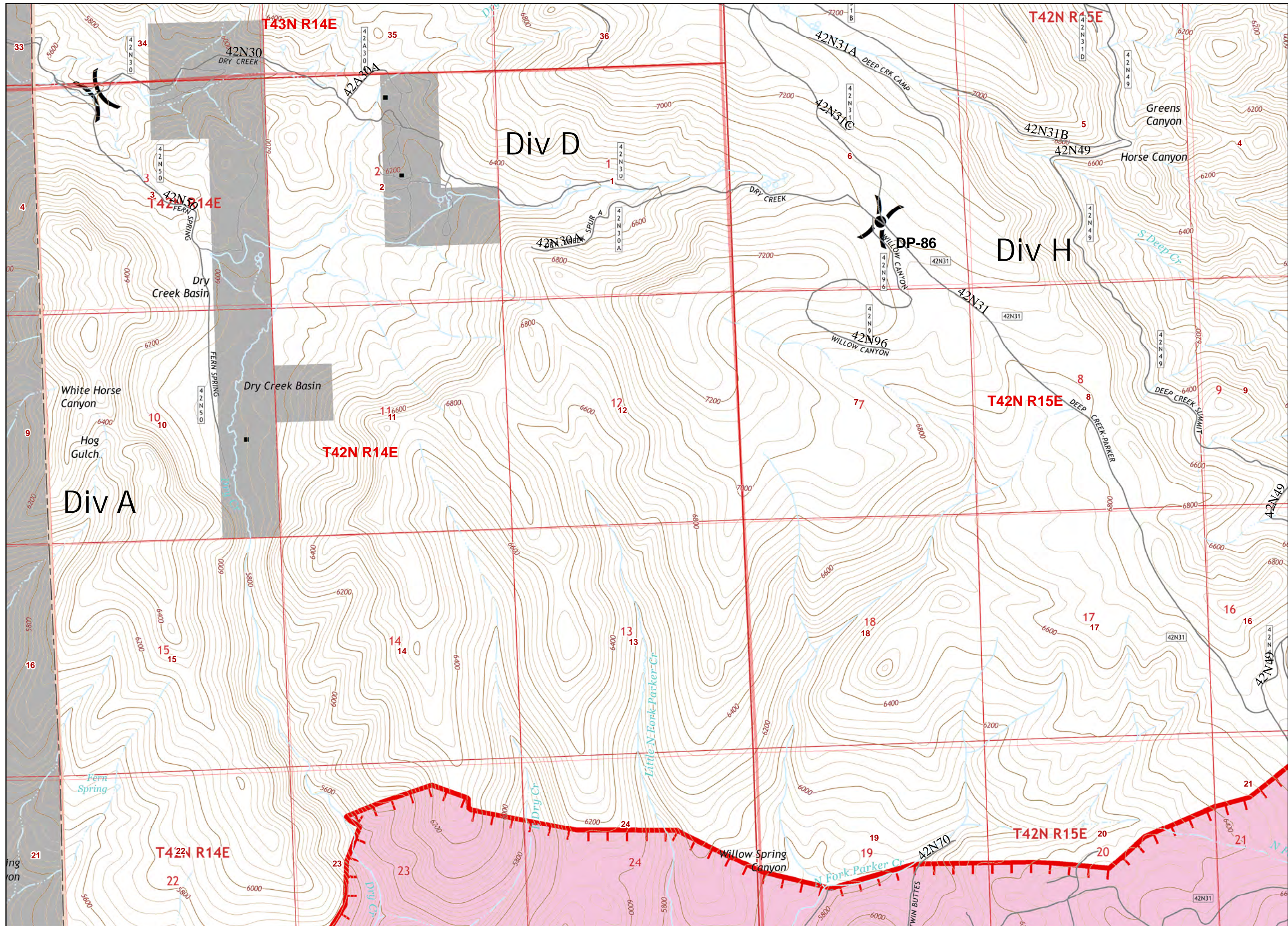
Federal

- Private



0 1/4 1/2
Miles

UTM ZONE 10 NAD 83



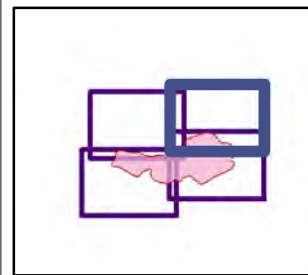
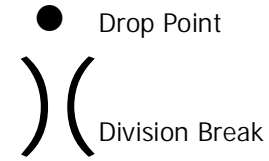
IAP MAP

PARKER2
CA-MDF-000862
AUGUST 5, 2017

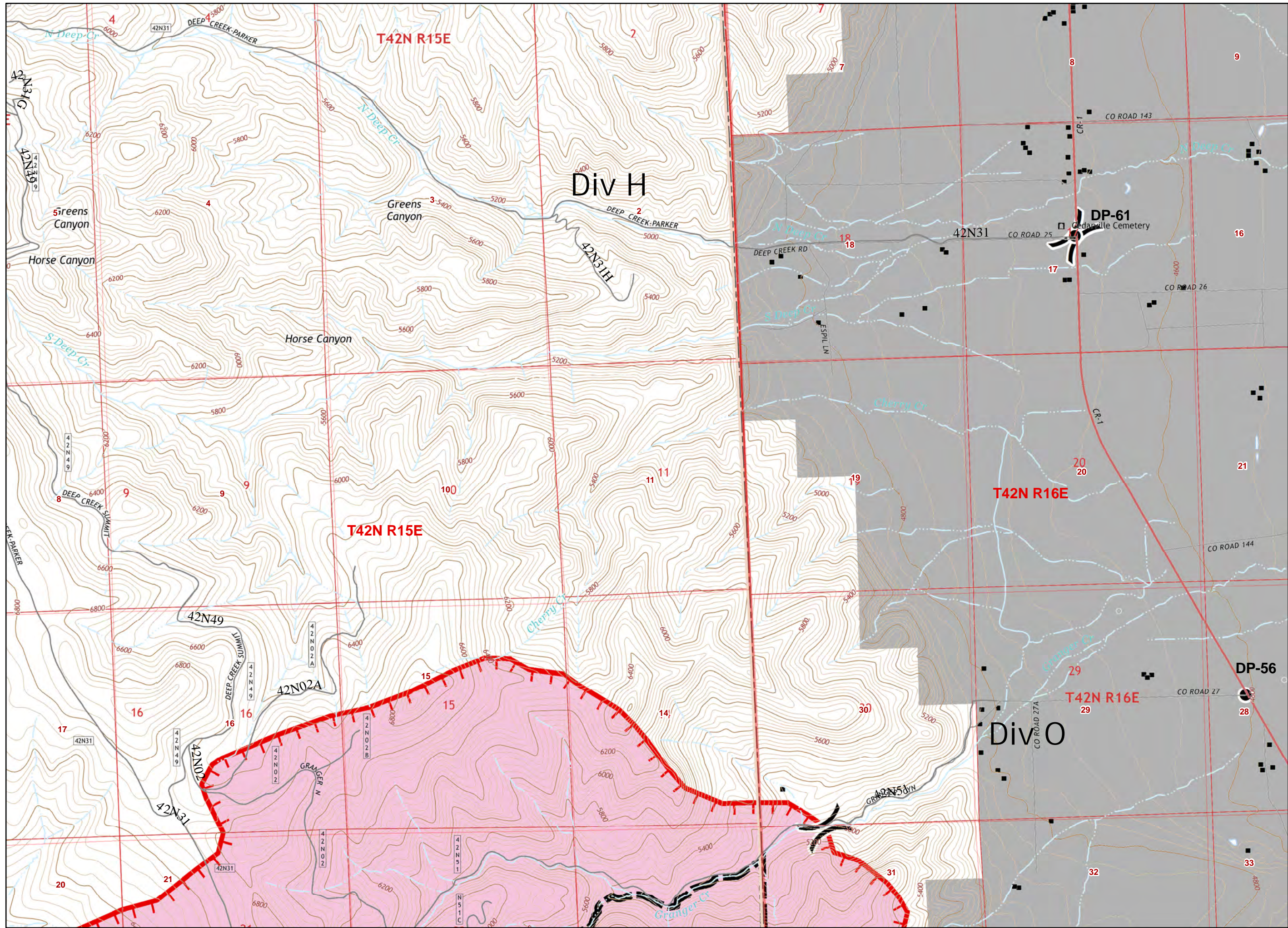
DAY SHIFT

PAGE 02 OF 4

APPROX 7,800 ACRES
AS OF 8/4 @ 2100



UTM ZONE 10 NAD 83



IAP MAP

PARKER2
CA-MDF-000862
AUGUST 5, 2017

DAY SHIFT

PAGE 03 OF 4

APPROX 7,800 ACRES
AS OF 8/4 @ 2100

● Drop Point

) (Division Break

┌─┐ Uncontrolled
└─┘ Fire Edge

■ Structures

Wilderness

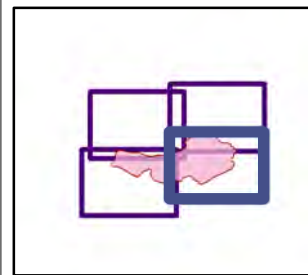
USFS

Land Status

Federal

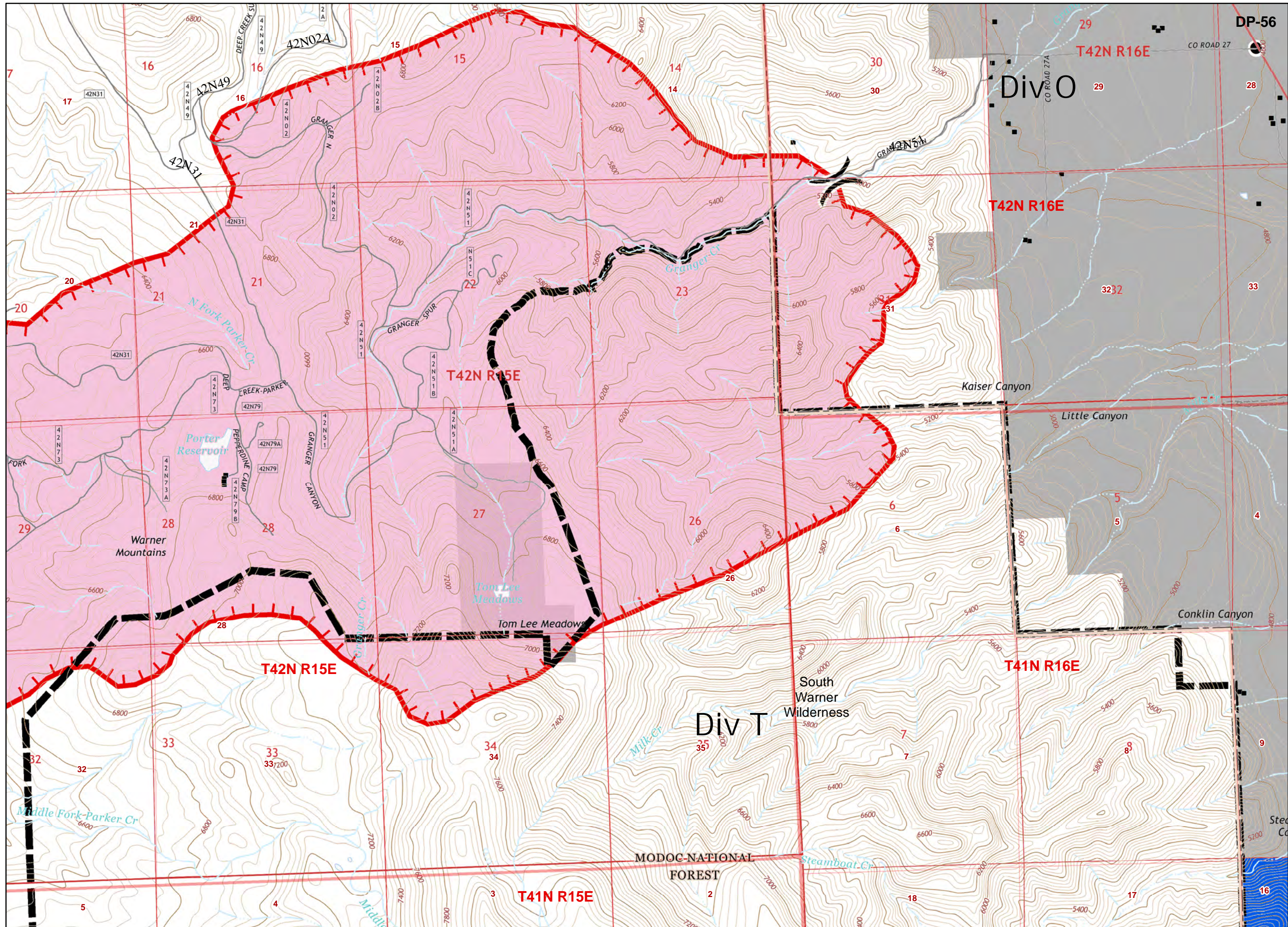
State

Private



0 ¼ ½
Miles

UTM ZONE 10 NAD 83



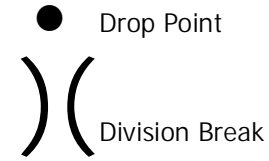
IAP MAP

PARKER2
CA-MDF-000862
AUGUST 5, 2017

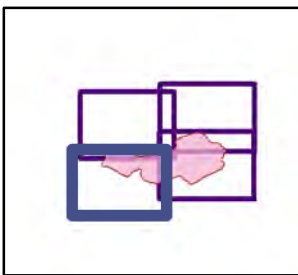
DAY SHIFT

PAGE 04 OF 4

APPROX 7,800 ACRES
AS OF 8/4 @ 2100



- Uncontrolled Fire Edge
- Structures
- Wilderness
- USFS
- Land Status
 - Federal
 - State
 - Private



UTM ZONE 10 NAD 83

