

**PARKER 2 FIRE  
CA-MDF-000862**

**OPERATIONS MAP**

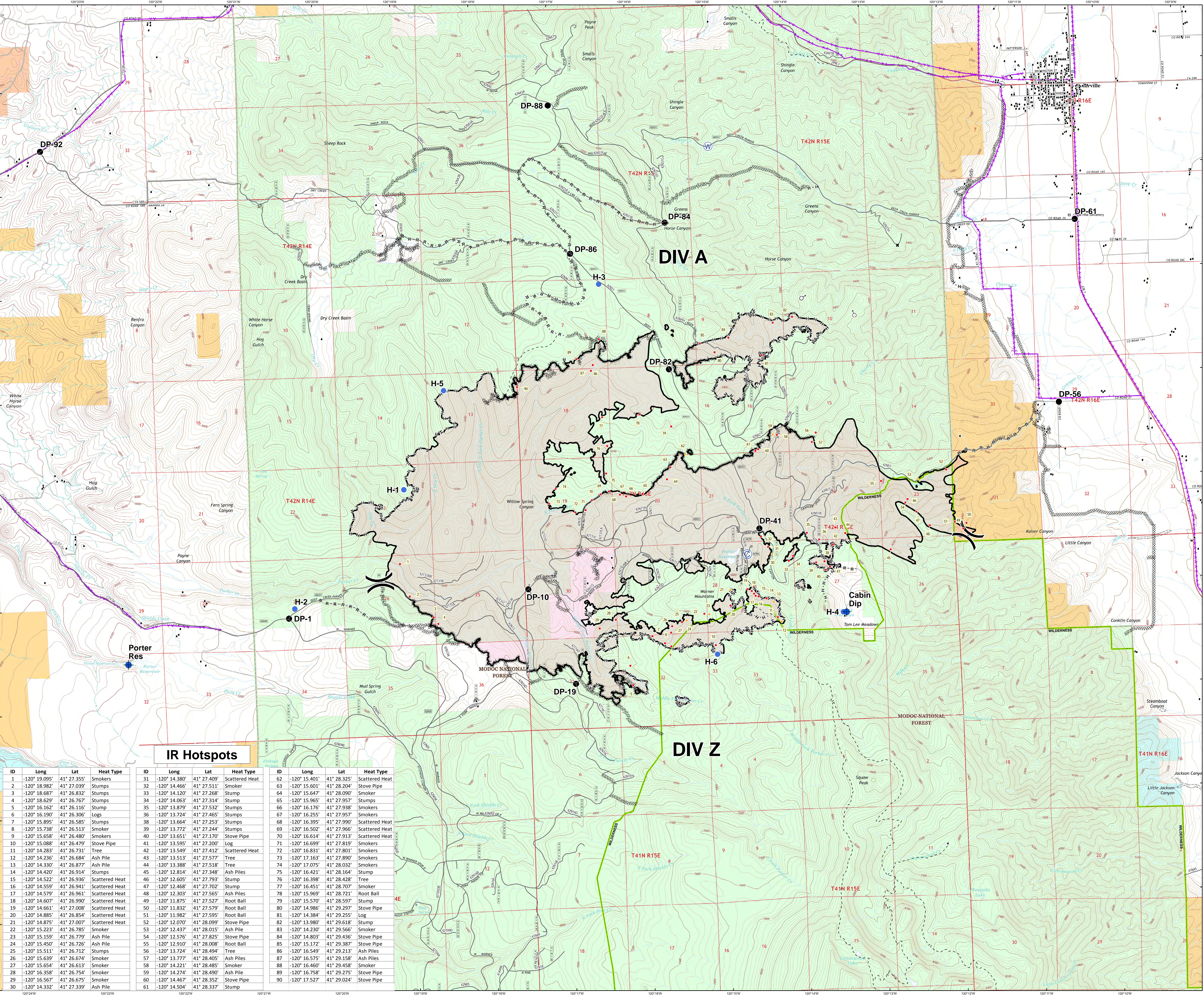
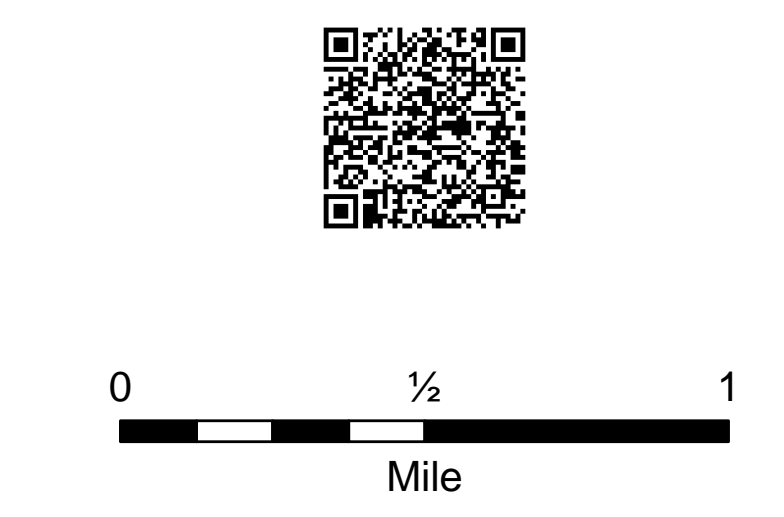
**AUGUST 15-19, 2017**

**7,697 ACRES**  
IR 8/7 AND MORE CURRENT GPS

**IR Hotspots\_20170813 @ 0945**

- Significant
- Moderate
- Completed Dozer Line
- - - - - Completed Hand Line
- R - R - R - R Road as Completed Line
- Completed Line
- Drop Point
- Camp
- ⊕ Dip Site
- Helispot
- Contained Spot Fire
- ⊕ Water Source
- ) ( Division Break
- Fire Perimeter
- Powerline
- Structure
- Road
- - - - - Trail
- ▭ USFS Admin Boundary
- ▭ Wilderness

- Owner**
- BIA
  - BLM
  - FS
  - State
  - Private



**IR Hotspots**

ID	Long	Lat	Heat Type	ID	Long	Lat	Heat Type	ID	Long	Lat	Heat Type
1	-120° 19.095'	41° 27.355'	Smokers	31	-120° 14.380'	41° 27.409'	Scattered Heat	62	-120° 15.401'	41° 28.325'	Scattered Heat
2	-120° 18.982'	41° 27.039'	Stumps	32	-120° 14.466'	41° 27.511'	Smoker	63	-120° 15.601'	41° 28.204'	Stove Pipe
3	-120° 18.687'	41° 26.832'	Stumps	33	-120° 14.120'	41° 27.268'	Stump	64	-120° 15.647'	41° 28.090'	Smoker
4	-120° 18.629'	41° 26.767'	Stumps	34	-120° 14.063'	41° 27.314'	Stump	65	-120° 15.965'	41° 27.957'	Stumps
5	-120° 16.162'	41° 26.116'	Stump	35	-120° 13.879'	41° 27.532'	Stumps	66	-120° 16.176'	41° 27.938'	Smokers
6	-120° 16.190'	41° 26.306'	Logs	36	-120° 13.724'	41° 27.465'	Stumps	67	-120° 16.255'	41° 27.957'	Smokers
7	-120° 15.895'	41° 26.585'	Stumps	38	-120° 13.664'	41° 27.253'	Stumps	68	-120° 16.395'	41° 27.990'	Scattered Heat
8	-120° 15.738'	41° 26.513'	Smoker	39	-120° 13.772'	41° 27.244'	Stumps	69	-120° 16.502'	41° 27.966'	Scattered Heat
9	-120° 15.658'	41° 26.480'	Smokers	40	-120° 13.651'	41° 27.170'	Stove Pipe	70	-120° 16.614'	41° 27.913'	Scattered Heat
10	-120° 15.088'	41° 26.479'	Stove Pipe	41	-120° 13.595'	41° 27.200'	Log	71	-120° 16.699'	41° 27.819'	Smokers
11	-120° 14.283'	41° 26.731'	Tree	42	-120° 13.549'	41° 27.412'	Scattered Heat	72	-120° 16.831'	41° 27.801'	Smokers
12	-120° 14.236'	41° 26.684'	Ash Pile	43	-120° 13.513'	41° 27.577'	Tree	73	-120° 17.163'	41° 27.899'	Smokers
13	-120° 14.330'	41° 26.877'	Ash Pile	44	-120° 13.388'	41° 27.518'	Tree	74	-120° 17.075'	41° 28.032'	Smokers
14	-120° 14.420'	41° 26.914'	Stumps	45	-120° 12.814'	41° 27.348'	Ash Piles	75	-120° 16.421'	41° 28.164'	Stump
15	-120° 14.522'	41° 26.936'	Scattered Heat	46	-120° 12.605'	41° 27.793'	Stump	76	-120° 16.398'	41° 28.428'	Tree
16	-120° 14.559'	41° 26.941'	Scattered Heat	47	-120° 12.468'	41° 27.702'	Stump	77	-120° 16.451'	41° 28.707'	Smoker
17	-120° 14.579'	41° 26.961'	Scattered Heat	48	-120° 12.303'	41° 27.565'	Ash Piles	78	-120° 15.969'	41° 28.721'	Root Ball
18	-120° 14.607'	41° 26.990'	Scattered Heat	49	-120° 11.875'	41° 27.527'	Root Ball	79	-120° 15.570'	41° 28.597'	Stump
19	-120° 14.661'	41° 27.008'	Scattered Heat	50	-120° 11.832'	41° 27.579'	Root Ball	80	-120° 14.986'	41° 29.297'	Stove Pipe
20	-120° 14.885'	41° 26.854'	Scattered Heat	51	-120° 11.982'	41° 27.595'	Root Ball	81	-120° 14.384'	41° 29.255'	Log
21	-120° 14.875'	41° 27.007'	Scattered Heat	52	-120° 12.070'	41° 28.099'	Stove Pipe	82	-120° 13.980'	41° 29.618'	Stump
22	-120° 15.223'	41° 26.785'	Smoker	53	-120° 12.437'	41° 28.015'	Ash Pile	83	-120° 14.230'	41° 29.566'	Smoker
23	-120° 15.159'	41° 26.779'	Ash Pile	54	-120° 12.576'	41° 27.825'	Stove Pipe	84	-120° 14.803'	41° 29.436'	Stove Pipe
24	-120° 15.450'	41° 26.726'	Ash Pile	55	-120° 15.126'	41° 28.008'	Root Ball	85	-120° 15.172'	41° 29.387'	Stove Pipe
25	-120° 15.511'	41° 26.712'	Stumps	56	-120° 13.724'	41° 28.494'	Tree	86	-120° 16.549'	41° 29.213'	Ash Piles
26	-120° 15.639'	41° 26.674'	Smoker	57	-120° 13.777'	41° 28.405'	Ash Piles	87	-120° 16.575'	41° 29.158'	Ash Piles
27	-120° 15.654'	41° 26.613'	Smoker	58	-120° 14.221'	41° 28.485'	Smoker	88	-120° 16.460'	41° 29.458'	Smoker
28	-120° 16.308'	41° 26.754'	Smoker	59	-120° 14.274'	41° 28.490'	Ash Pile	89	-120° 16.758'	41° 29.275'	Stove Pipe
29	-120° 16.567'	41° 26.675'	Smoker	60	-120° 14.467'	41° 28.352'	Stove Pipe	90	-120° 17.527'	41° 29.024'	Stove Pipe
30	-120° 14.332'	41° 27.339'	Ash Pile	61	-120° 14.504'	41° 28.337'	Stump				

Map Datum: NAD 83 UTM Zone 10  
 Ops\_Arch\_E\_Land\_2017\_Park2\_CAMD000862\_AMD0811.mxd