

120°56'W

120°55'W

120°54'W

40°1'N

40°0'N

39°59'N

39°58'N

40°1'N

40°0'N

39°59'N

39°58'N

Toll Fire

Heat Acres: 265 est

CA-PNF-001272

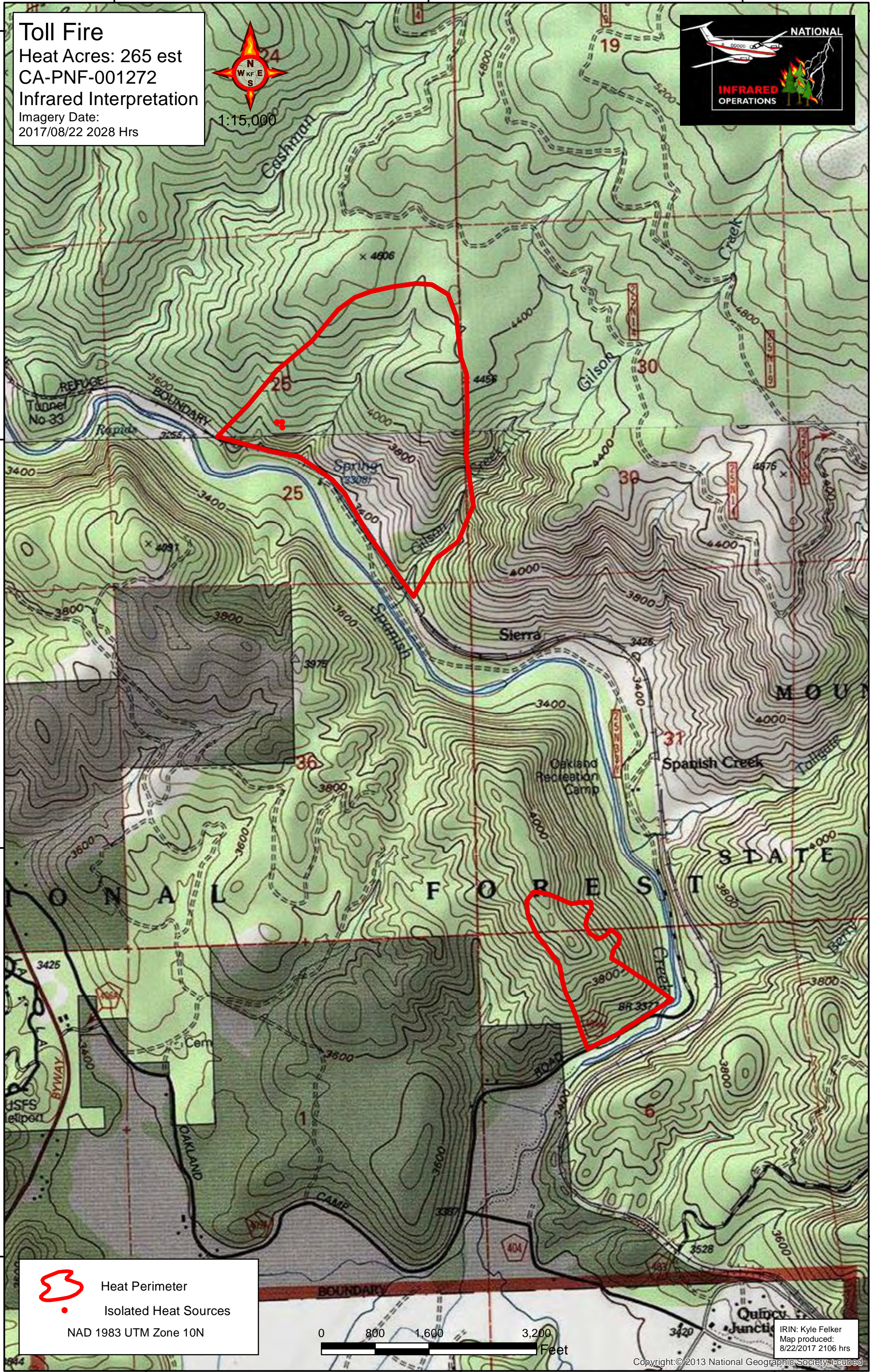
Infrared Interpretation

Imagery Date:

2017/08/22 2028 Hrs



1:15,000



Heat Perimeter



Isolated Heat Sources

NAD 1983 UTM Zone 10N

0 800 1,600 3,200 Feet

IRIN: Kyle Felker
Map produced:
8/22/2017 2106 hrs

Copyright © 2013 National Geographic Society, I-cubed

120°56'W

120°55'W

120°54'W