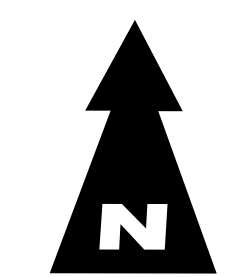
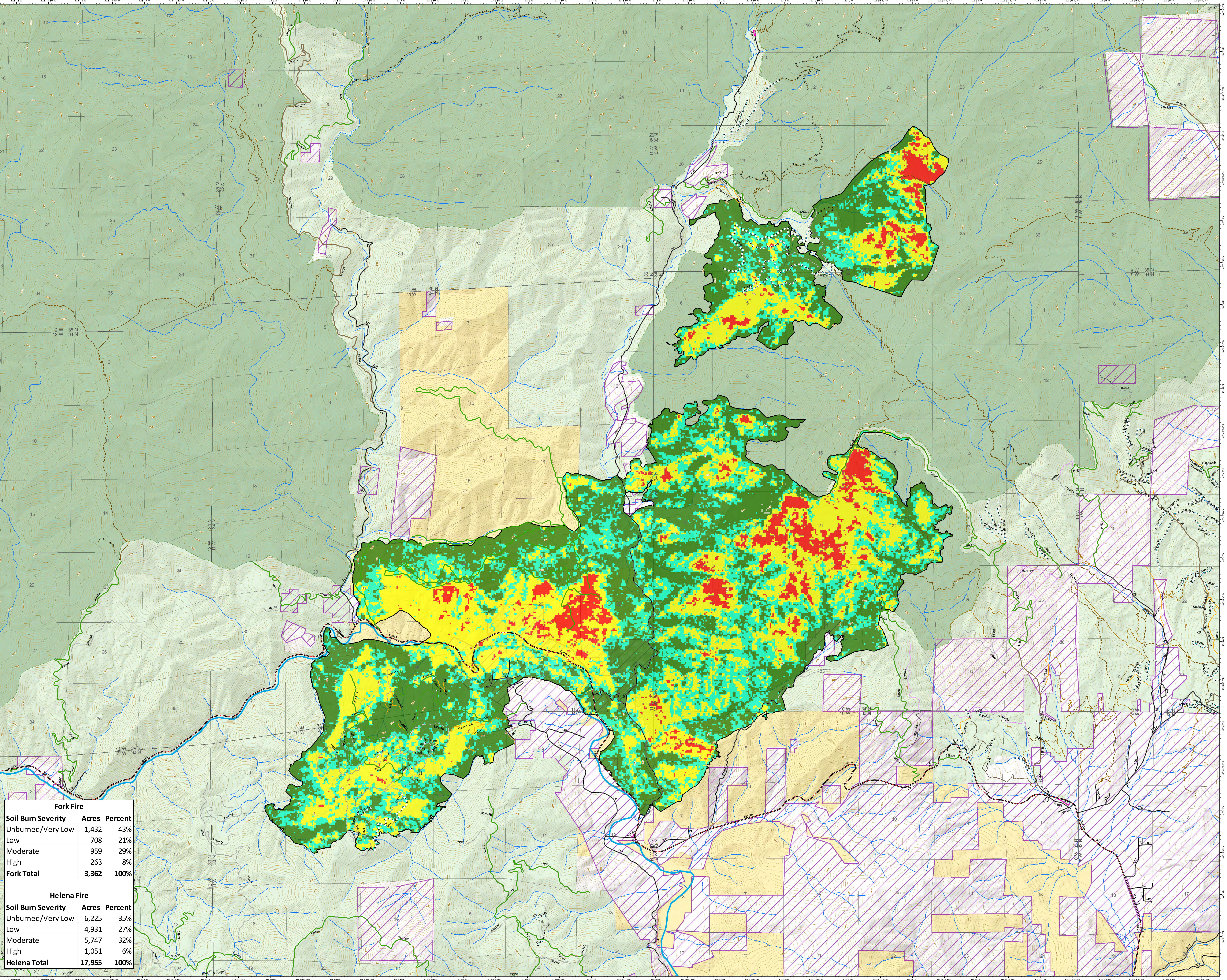


- NFS1 or other federal trail, existing
 - Decommissioned
 - Trail status unknown
 - USDA Forest Service
 - Non-Forest Service
 - State Responsible Area
 - Perennial Stream
 - Trinity Alps Wilderness
 - Bureau of Land Management
 - STATE HIGHWAY 299
 - Level 1 (Closed Road)
 - Level 2 (Open to all vehicles)
 - Level 3 (Open to highway legal vehicles)
 - Level 4 (Moderate degree of comfort)
 - Admin Only
 - Decommissioned
 - Other Public
 - Private
 - Unauthorized routes
 - Permit Required
 - Converted to motorized trail
 - Supplemental BLM roads
- Soil Burn Severity**
- Very Low or Unburned
 - Low
 - Moderate
 - High



0 0.5 1 Miles
NAD 1983 UTM ZONE 10N



Fork Fire		
Soil Burn Severity	Acres	Percent
Unburned/Very Low	1,432	43%
Low	708	21%
Moderate	959	29%
High	263	8%
Fork Total	3,362	100%

Helena Fire		
Soil Burn Severity	Acres	Percent
Unburned/Very Low	6,225	35%
Low	4,931	27%
Moderate	5,747	32%
High	1,051	6%
Helena Total	17,955	100%