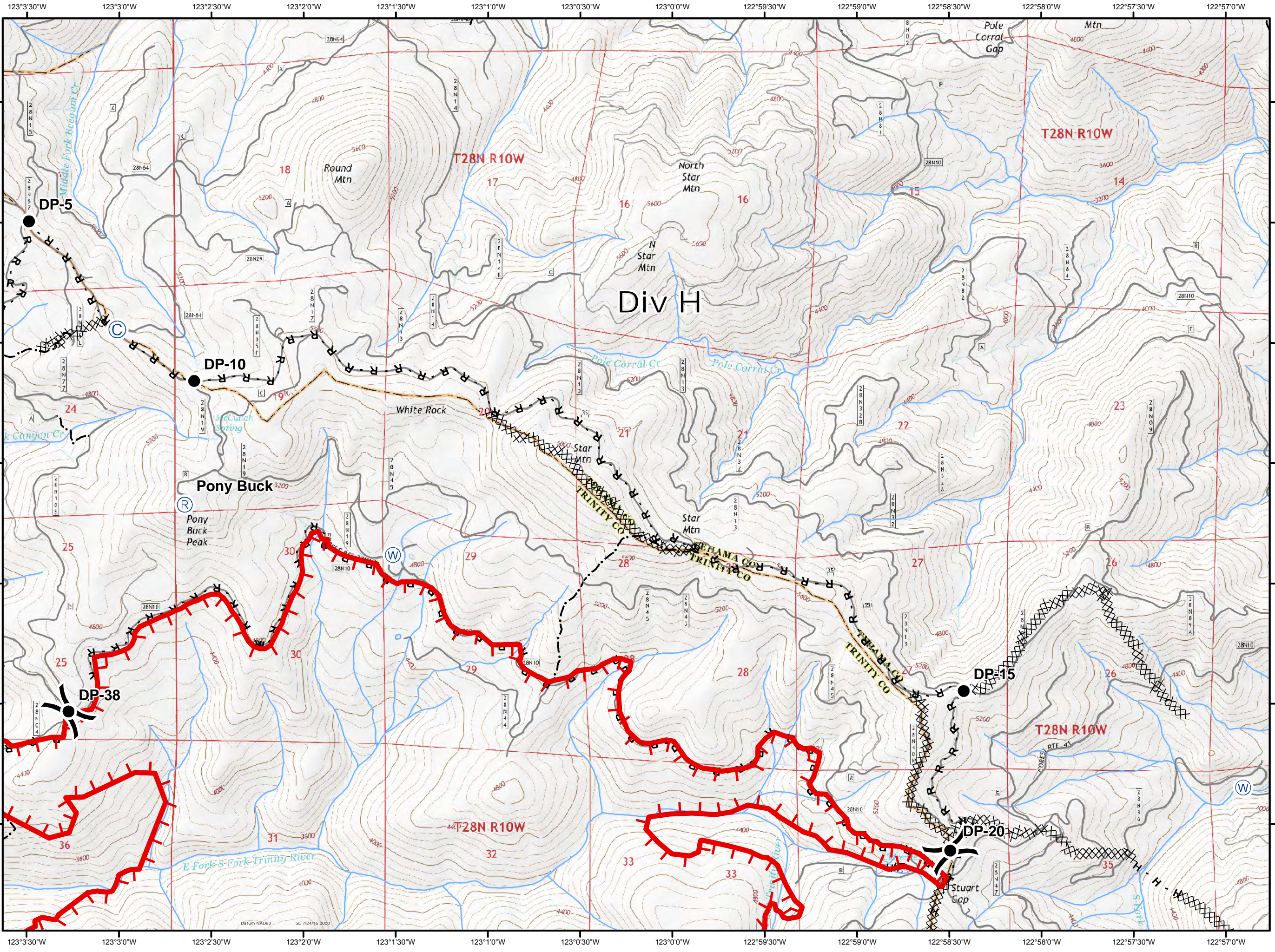
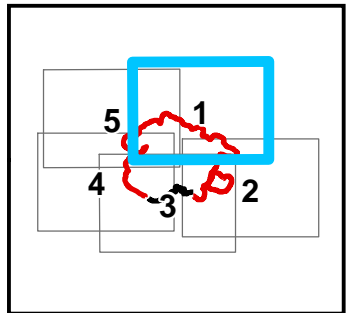


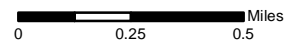
Buck Fire
CA-SHF-001850
Page 1 of 5
9/27/2017

Approx. fire perimeter as of
 9/26/2017 @ 2100

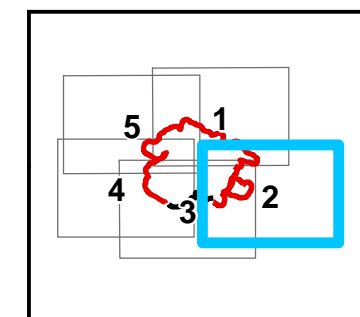


Legend

- Camp
- Drop Point
- Repeater
- Water Source
- Division Break
- Uncontrolled Fire Edge
- Completed Dozer Line
- Completed Hand Line
- Road as Completed Line
- Trail

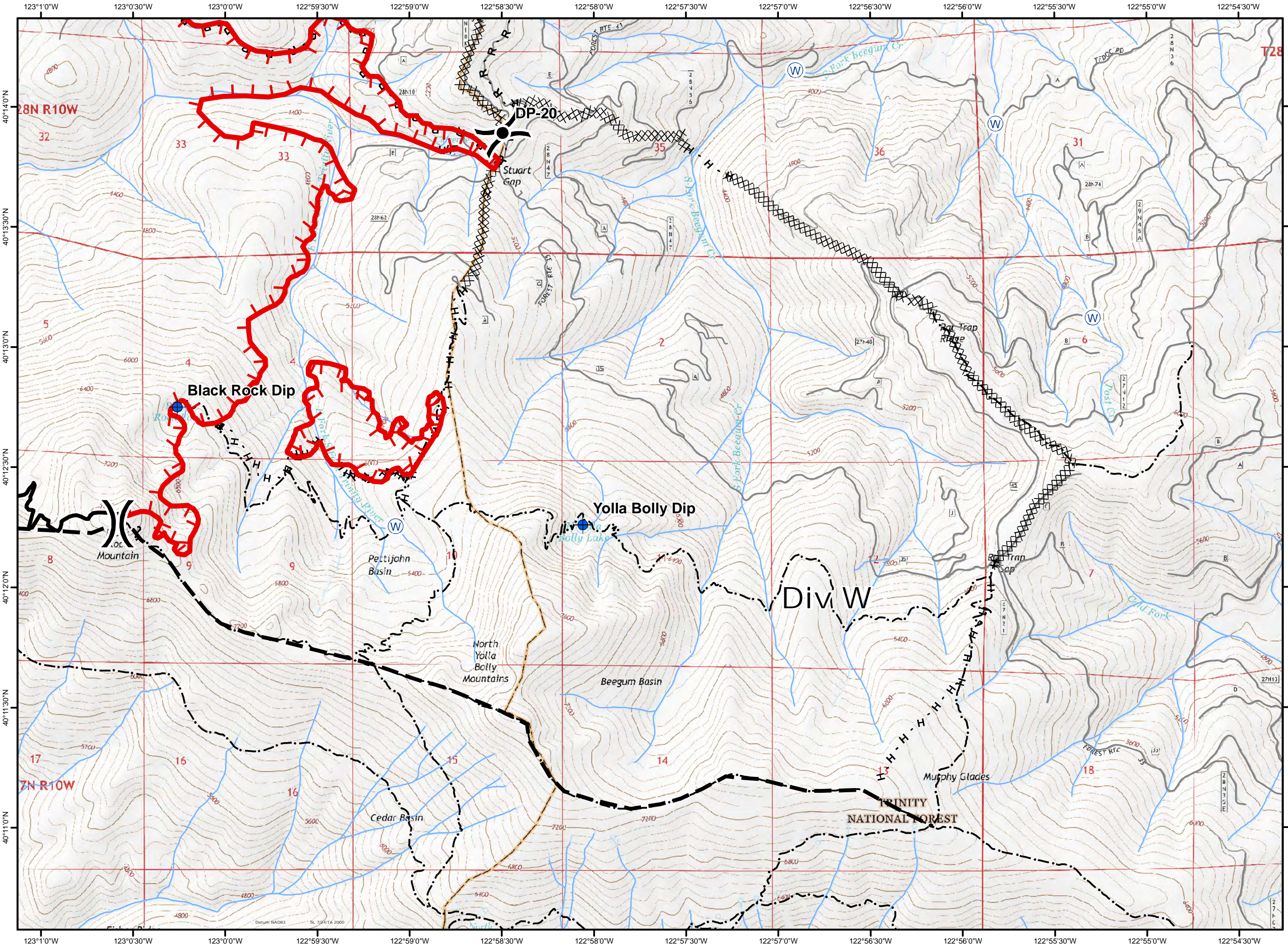
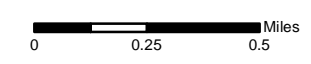


Approx. fire perimeter as of
 9/26/2017 @ 2100

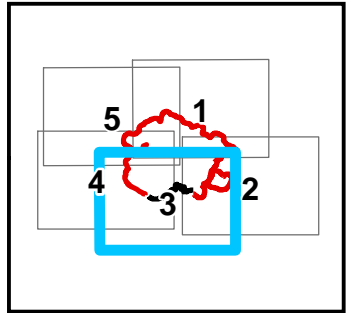


Legend

- Dip Site
- Drop Point
- Water Source
- Division Break
- Uncontrolled Fire Edge
- Completed Line
- Completed Dozer Line
- Completed Hand Line
- Road as Completed Line
- Planned Fire Line
- Trail



Approx. fire perimeter as of
 9/26/2017 @ 2100

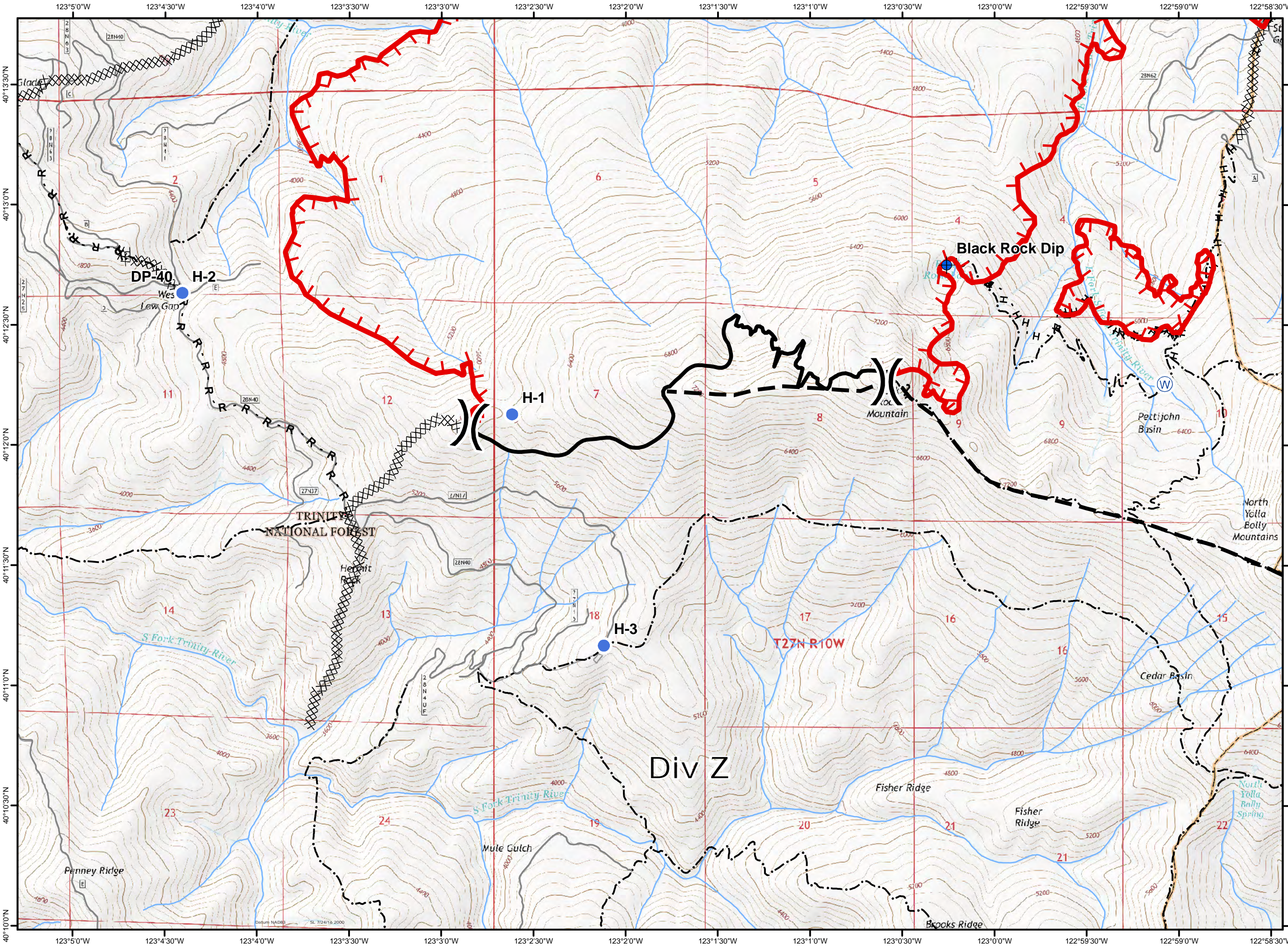


Legend

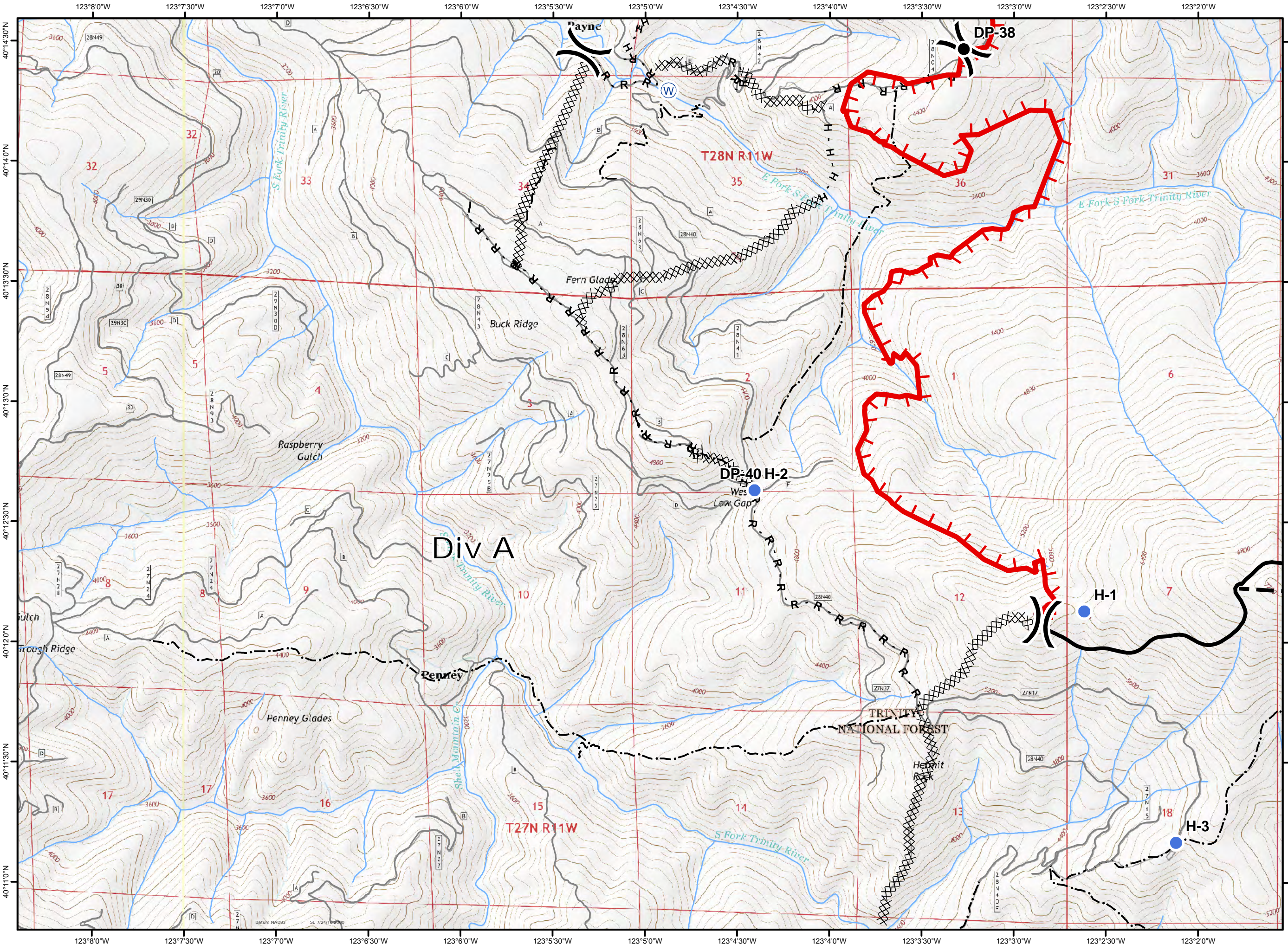
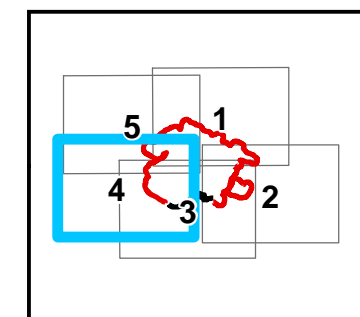
- Dip Site
- Drop Point
- Helispot
- Water Source
- Division Break
- Uncontrolled Fire Edge
- Completed Line
- Completed Dozer Line
- H - H Completed Hand Line
- R - R Road as Completed Line
- Planned Fire Line
- Trail



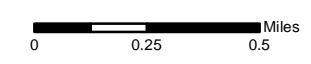
0 0.25 0.5 Miles



Approx. fire perimeter as of
 9/26/2017 @ 2100

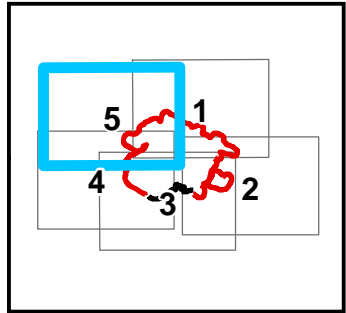


- Legend**
- Drop Point
 - Helispot
 - Ⓜ Water Source
 -) Division Break
 - ▬ Uncontrolled Fire Edge
 - ▬ Completed Line
 - XXXXX Completed Dozer Line
 - H - H Completed Hand Line
 - R - R Road as Completed Line
 - ▬ Planned Fire Line
 - - - Trail



Buck Fire
CA-SHF-001850
Page 5 of 5
9/27/2017

Approx. fire perimeter as of
 9/26/2017 @ 2100



Legend

- Camp
- Drop Point
- Helispot
- Repeater
- Water Source
- Division Break
- Uncontrolled Fire Edge
- Completed Dozer Line
- H - H Completed Hand Line
- R - R Road as Completed Line
- Other
- Trail



0 0.25 0.5 Miles

