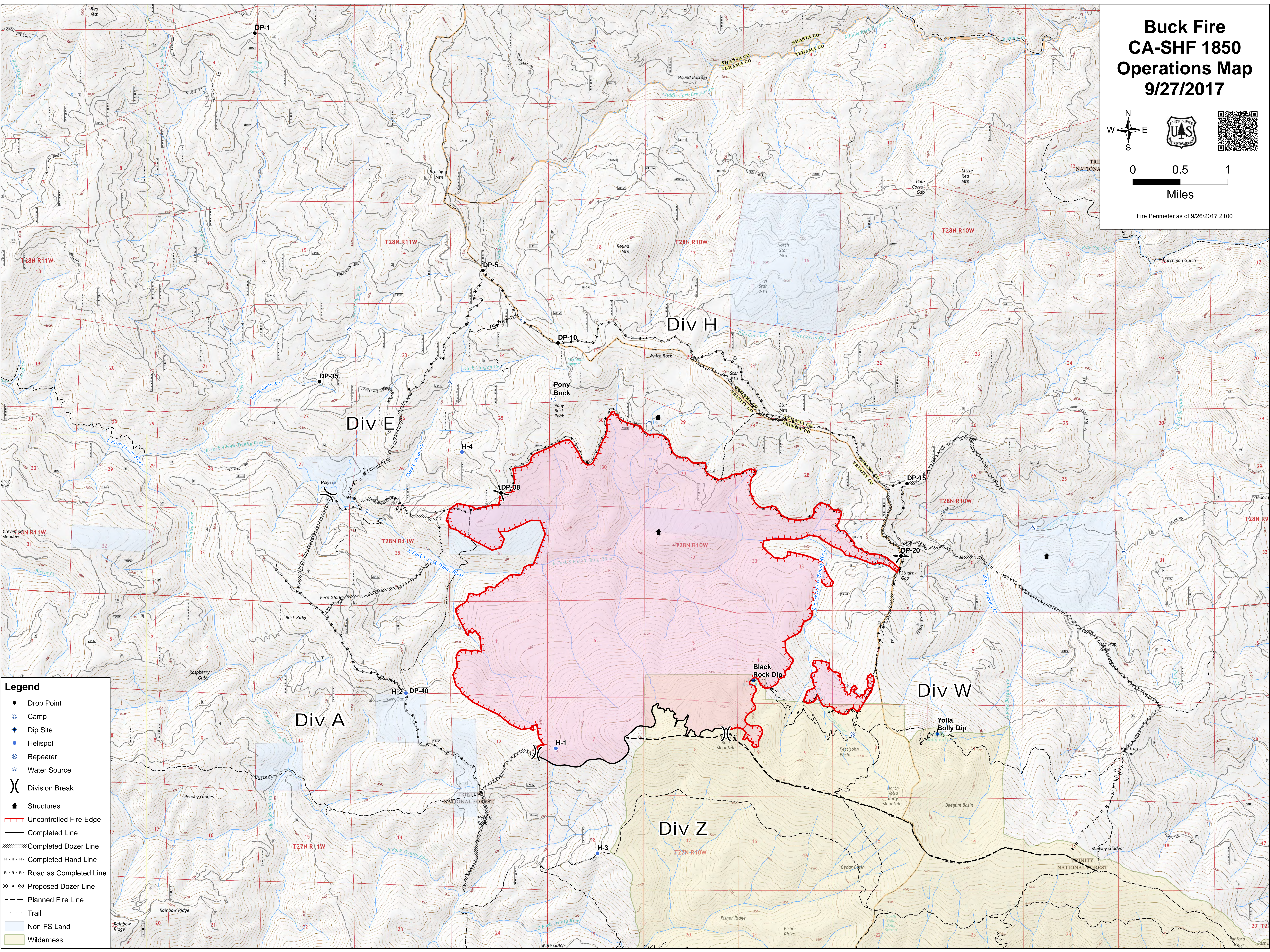


Buck Fire CA-SHF 1850 Operations Map 9/27/2017

0 0.5 1
Miles
Fire Perimeter as of 9/26/2017 2100



- Legend**
- Drop Point
 - ⊙ Camp
 - ⬢ Dip Site
 - ⬢ Helispot
 - Ⓡ Repeater
 - Ⓢ Water Source
 - ⌋ Division Break
 - ▣ Structures
 - Uncontrolled Fire Edge
 - Completed Line
 - ⋯ Completed Dozer Line
 - ⋯ Completed Hand Line
 - ⋯ Road as Completed Line
 - ⋯ Proposed Dozer Line
 - ⋯ Planned Fire Line
 - ⋯ Trail
 - Non-FS Land
 - Wilderness