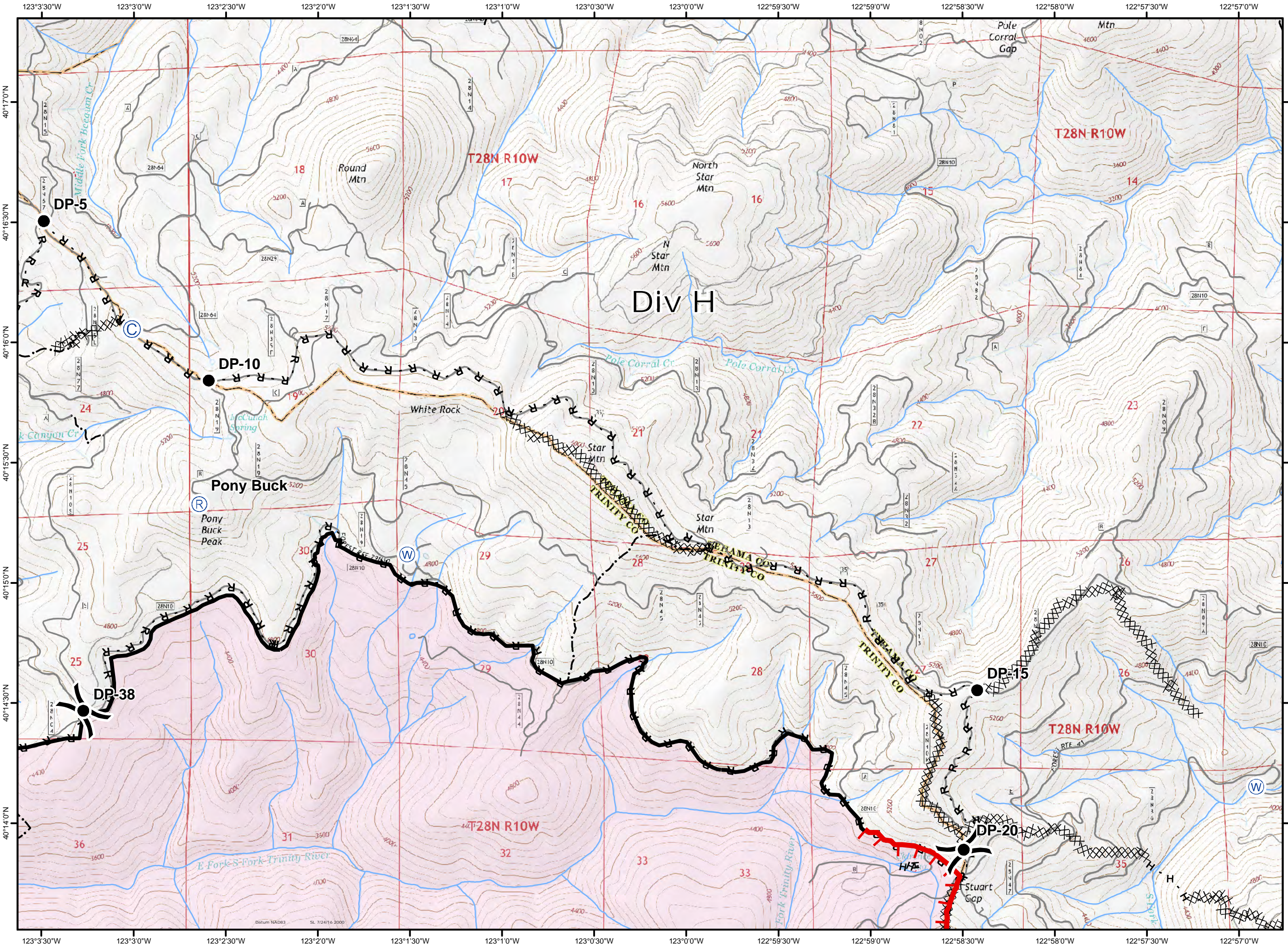
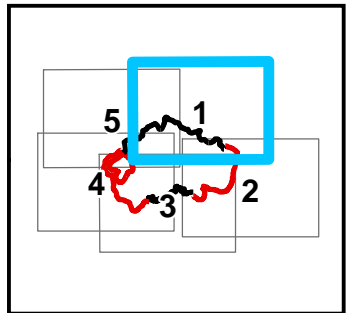


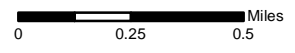
Buck Fire
CA-SHF-001850
Page 1 of 5
10/01/2017

Approx. fire perimeter as of
 9/30/2017 @ 2030



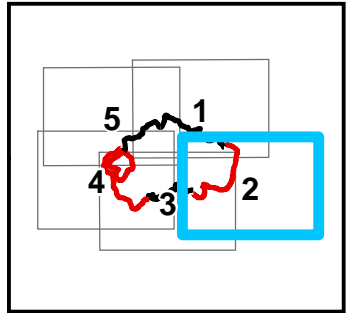
Legend

- Camp
- Drop Point
- Repeater
- Water Source
- Division Break
- Uncontrolled Fire Edge
- Completed Line
- Completed Dozer Line
- Completed Hand Line
- Road as Completed Line
- Trail









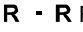





Buck Fire
CA-SHF-001850
Page 2 of 5
10/01/2017

Approx. fire perimeter as of
 9/30/2017 @ 2030

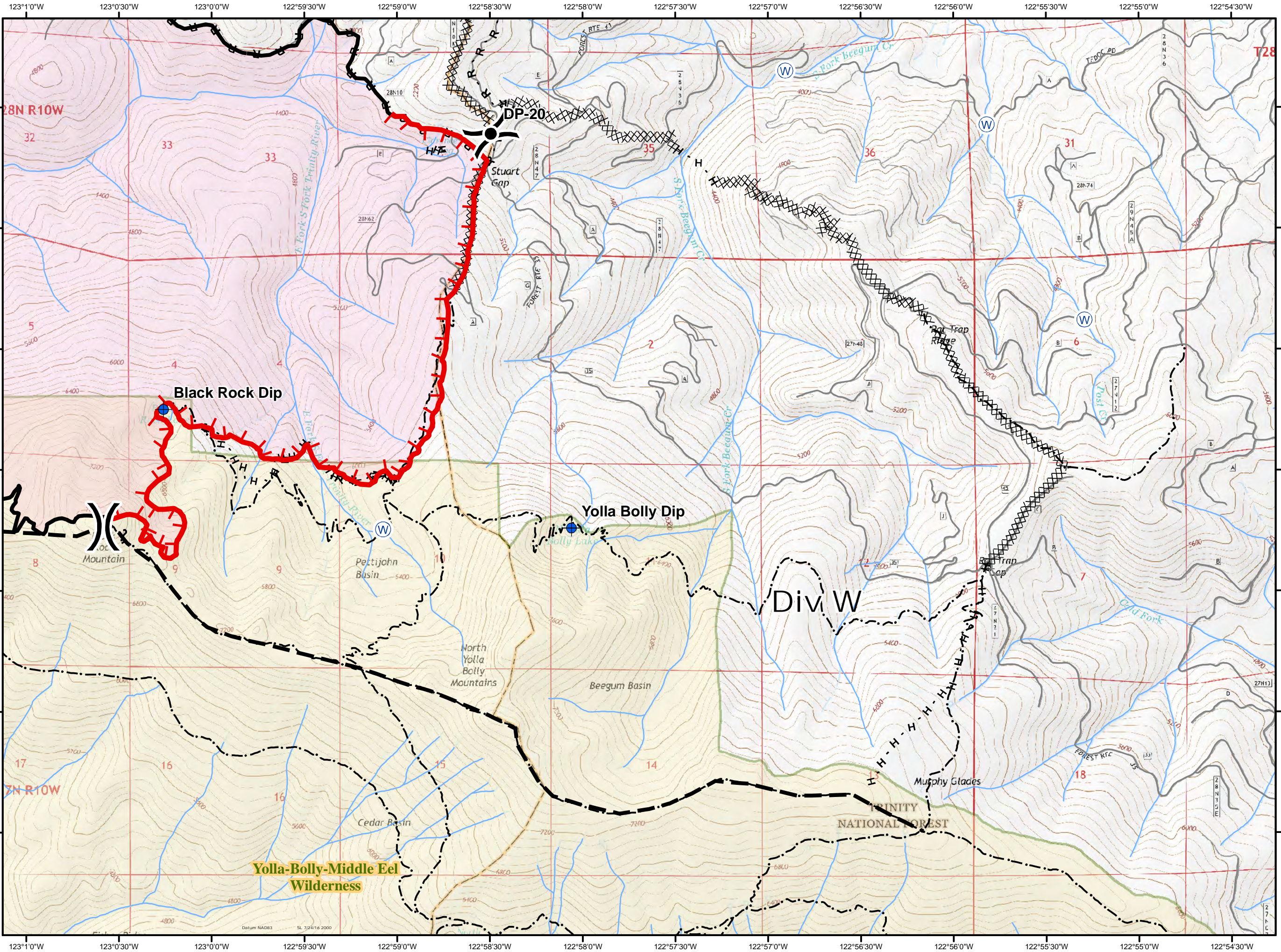


Legend

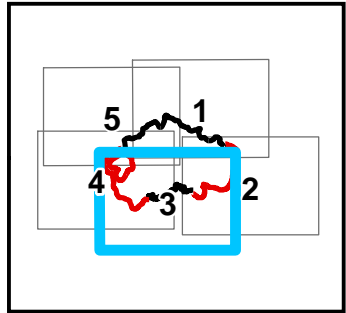
-  Dip Site
-  Drop Point
-  Water Source
-  Division Break
-  Uncontrolled Fire Edge
-  Completed Line
-  Completed Dozer Line
-  H - H Completed Hand Line
-  R - R Road as Completed Line
-  Planned Fire Line
-  Trail
-  Wilderness



0 0.25 0.5 Miles



Approx. fire perimeter as of
 9/30/2017 @ 2030

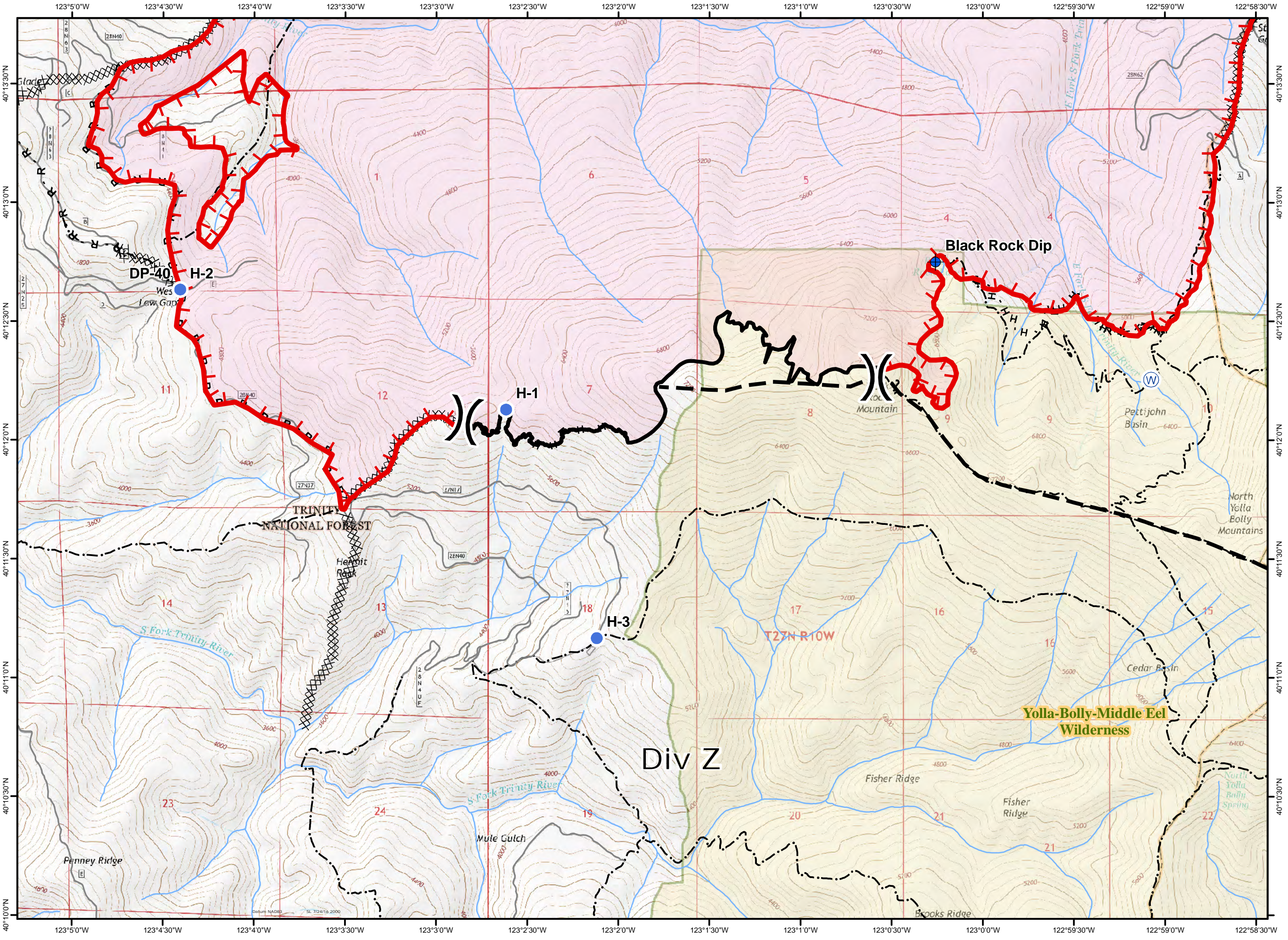


Legend

- Dip Site
- Drop Point
- Helispot
- Water Source
- Division Break
- Uncontrolled Fire Edge
- Completed Line
- Completed Dozer Line
- H - H Completed Hand Line
- R - R Road as Completed Line
- Planned Fire Line
- Trail
- Wilderness

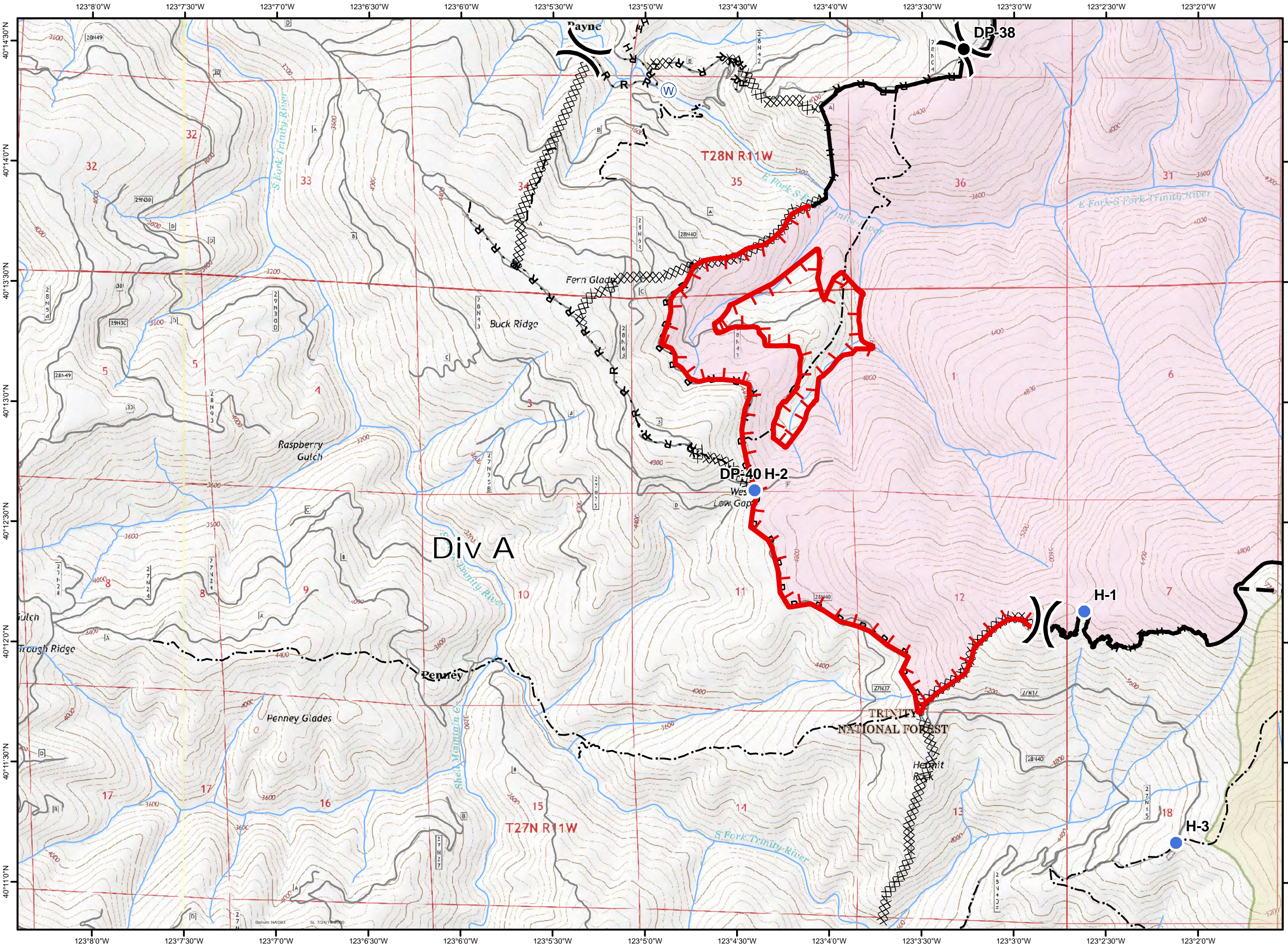
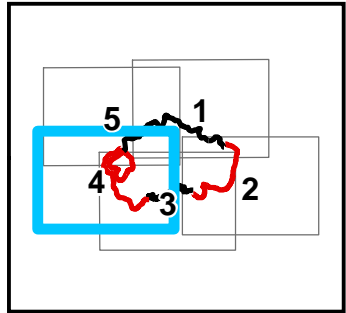


0 0.25 0.5 Miles



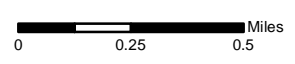
Buck Fire
CA-SHF-001850
Page 4 of 5
10/01/2017

Approx. fire perimeter as of
 9/30/2017 @ 2030



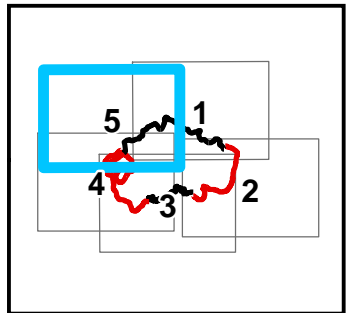
Legend

- Drop Point
- Helispot
- Ⓜ Water Source
-) Division Break
- ┌ Uncontrolled Fire Edge
- Completed Line
- XXXXX Completed Dozer Line
- H - H Completed Hand Line
- R - R Road as Completed Line
- - - Planned Fire Line
- - - Trail
- ▭ Wilderness



Buck Fire
CA-SHF-001850
Page 5 of 5
10/01/2017

Approx. fire perimeter as of
 9/30/2017 @ 2030



Legend

- Camp
- Drop Point
- Helispot
- Repeater
- Water Source
- Division Break
- Uncontrolled Fire Edge
- Completed Line
- Completed Dozer Line
- Completed Hand Line
- Road as Completed Line
- Trail



0 0.25 0.5 Miles

