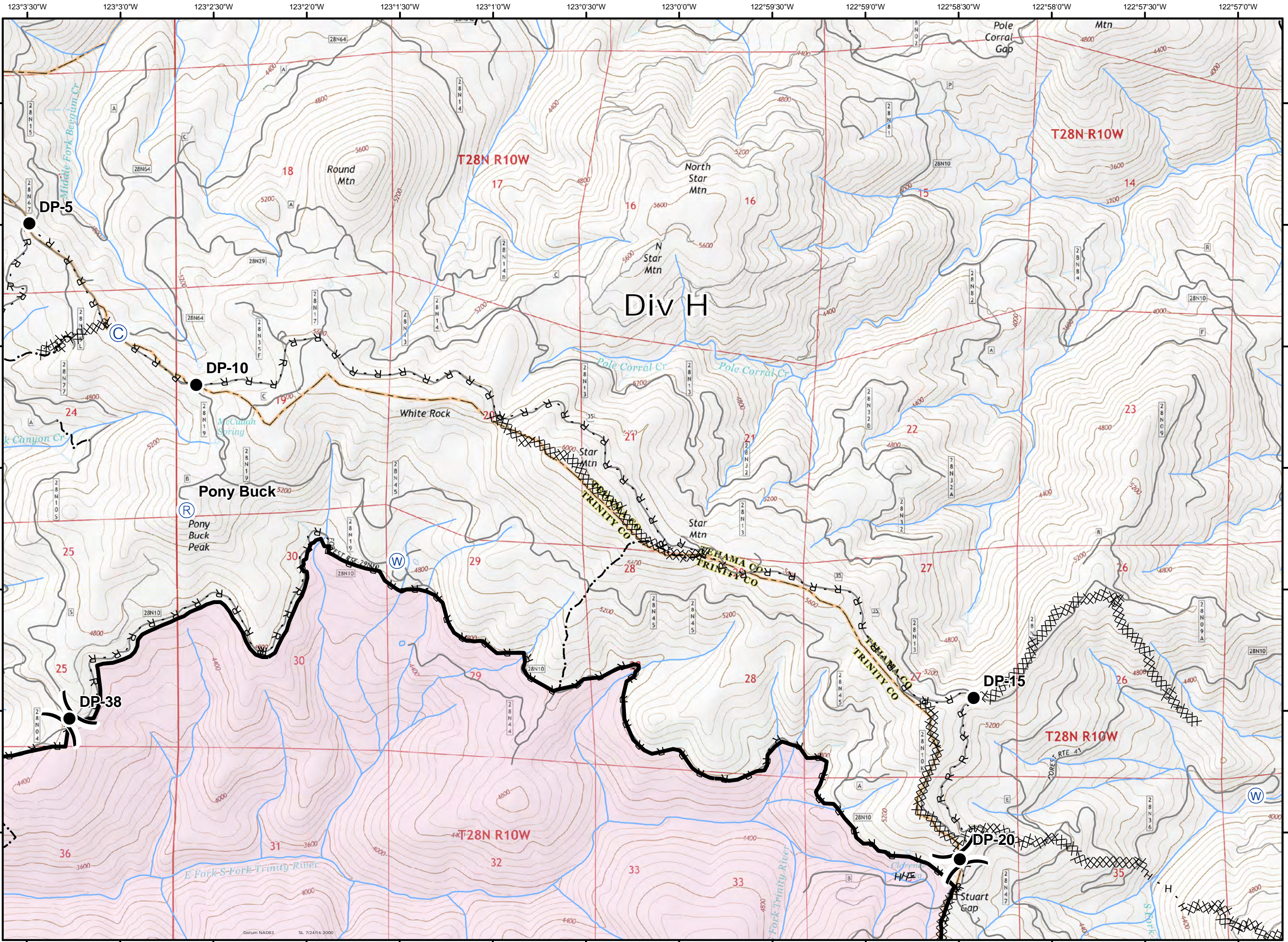
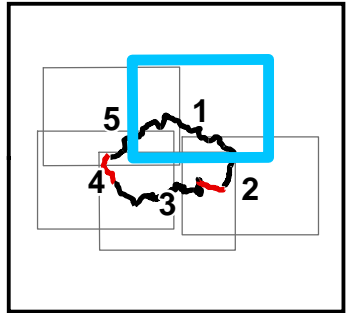


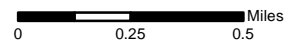
Buck Fire
CA-SHF-001850
Page 1 of 5
10/03/2017

Approx. fire perimeter as of
 10/2/2017 @ 2000

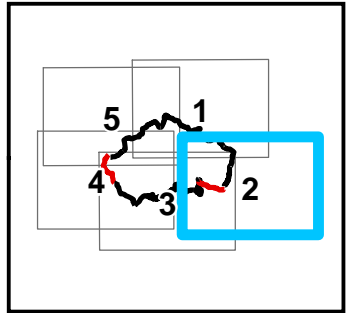


Legend

- Camp
- Drop Point
- Repeater
- Water Source
- Division Break
- Completed Line
- Completed Dozer Line
- Completed Hand Line
- Road as Completed Line
- Trail



Approx. fire perimeter as of
 10/2/2017 @ 2000

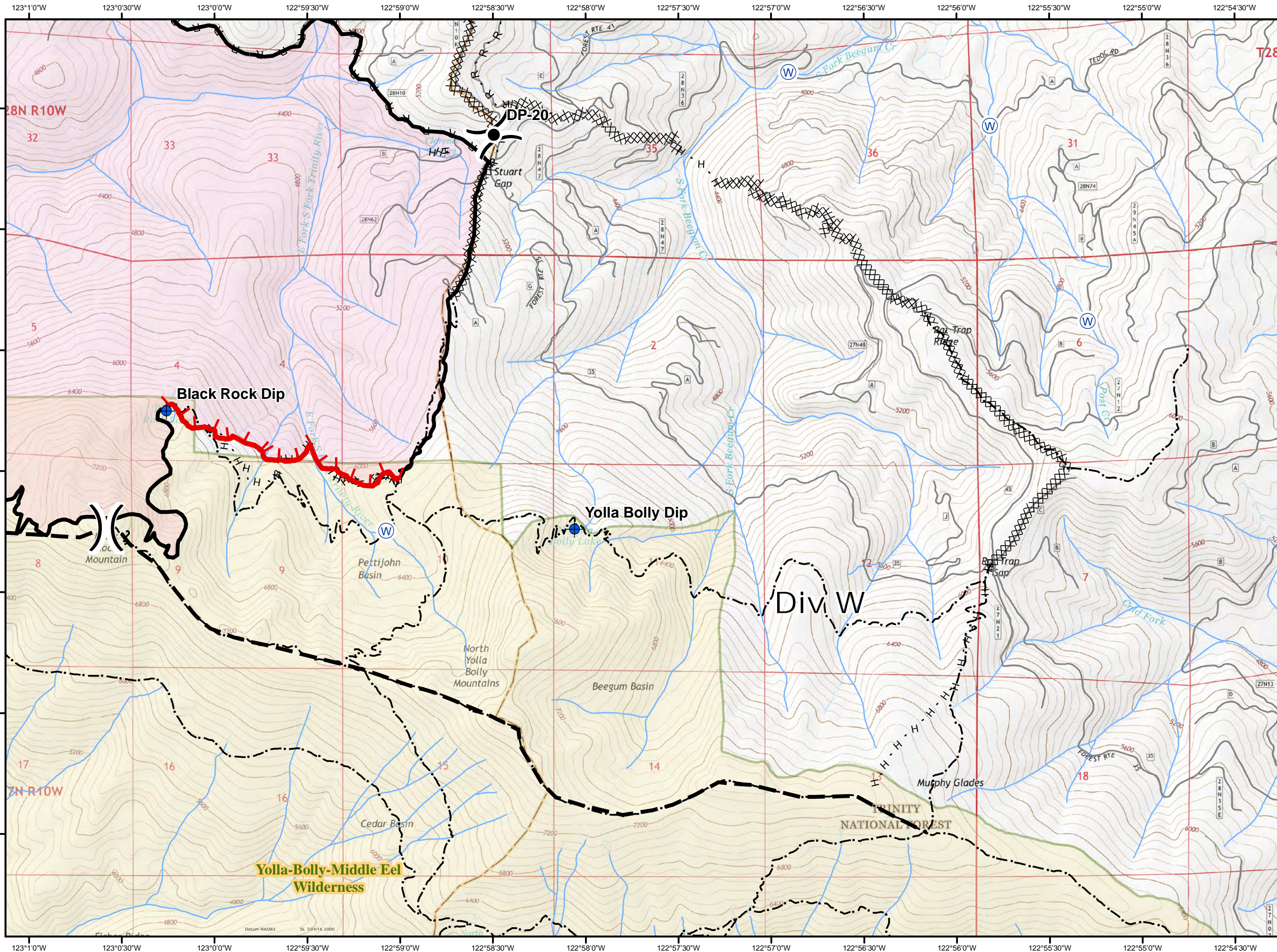


Legend

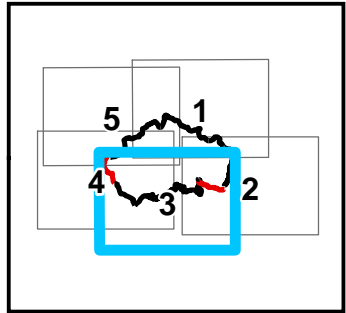
- Dip Site
- Drop Point
- Water Source
- Division Break
- Uncontrolled Fire Edge
- Completed Line
- Completed Dozer Line
- H - H Completed Hand Line
- R - R Road as Completed Line
- Planned Fire Line
- Trail
- Wilderness



0 0.25 0.5 Miles



Approx. fire perimeter as of
 10/2/2017 @ 2000

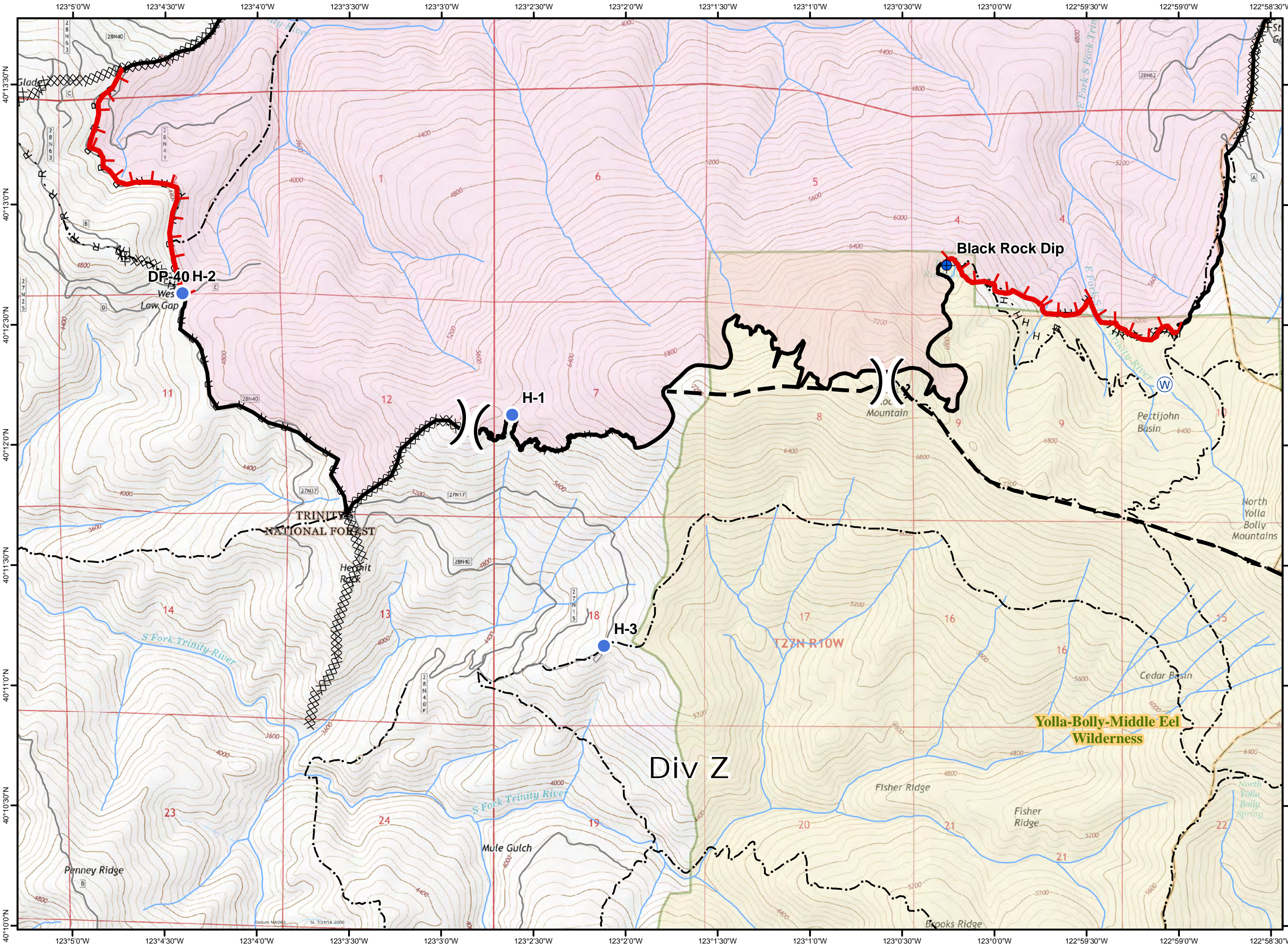


Legend

- Dip Site
- Drop Point
- Helispot
- Water Source
- Division Break
- Uncontrolled Fire Edge
- Completed Line
- Completed Dozer Line
- H - H Completed Hand Line
- R - R Road as Completed Line
- Planned Fire Line
- Trail
- Wilderness



0 0.25 0.5 Miles



Div Z

Yolla-Bolly-Middle Eel
 Wilderness

Black Rock Dip

DP-40 H-2

H-1

H-3

TRINITY
 NATIONAL FOREST

Penney Ridge

Mule Gulch

Fisher Ridge

Fisher Ridge

Brooks Ridge

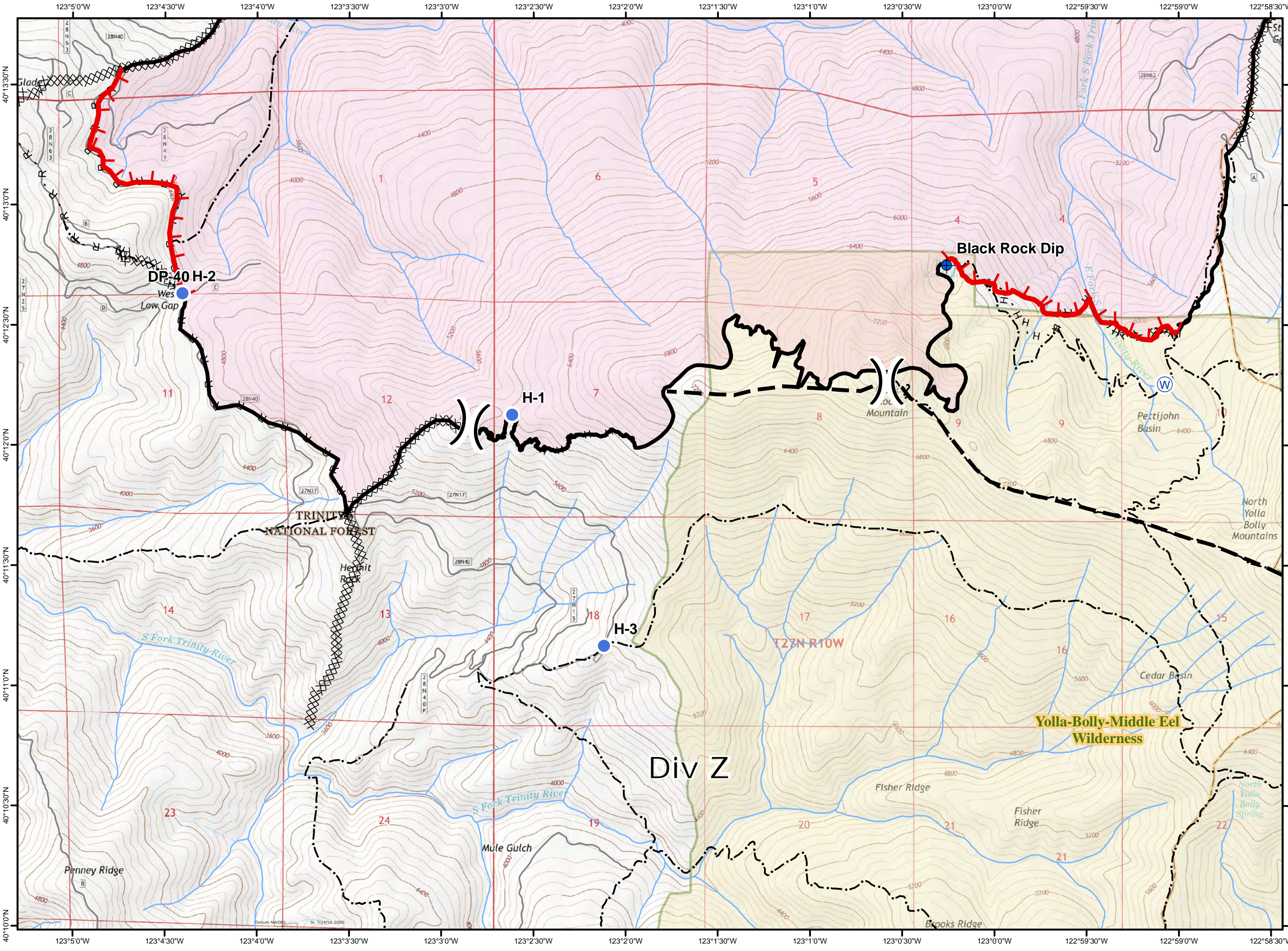
Pettijohn Basin

Cedar Basin

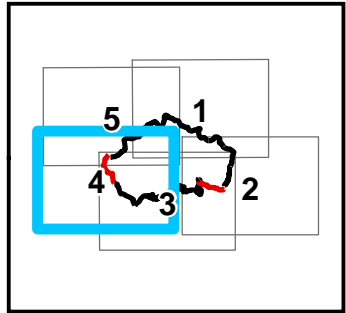
North Yolla Bolly Spring

Loc Mountain

T27N R10W



Approx. fire perimeter as of
 10/2/2017 @ 2000

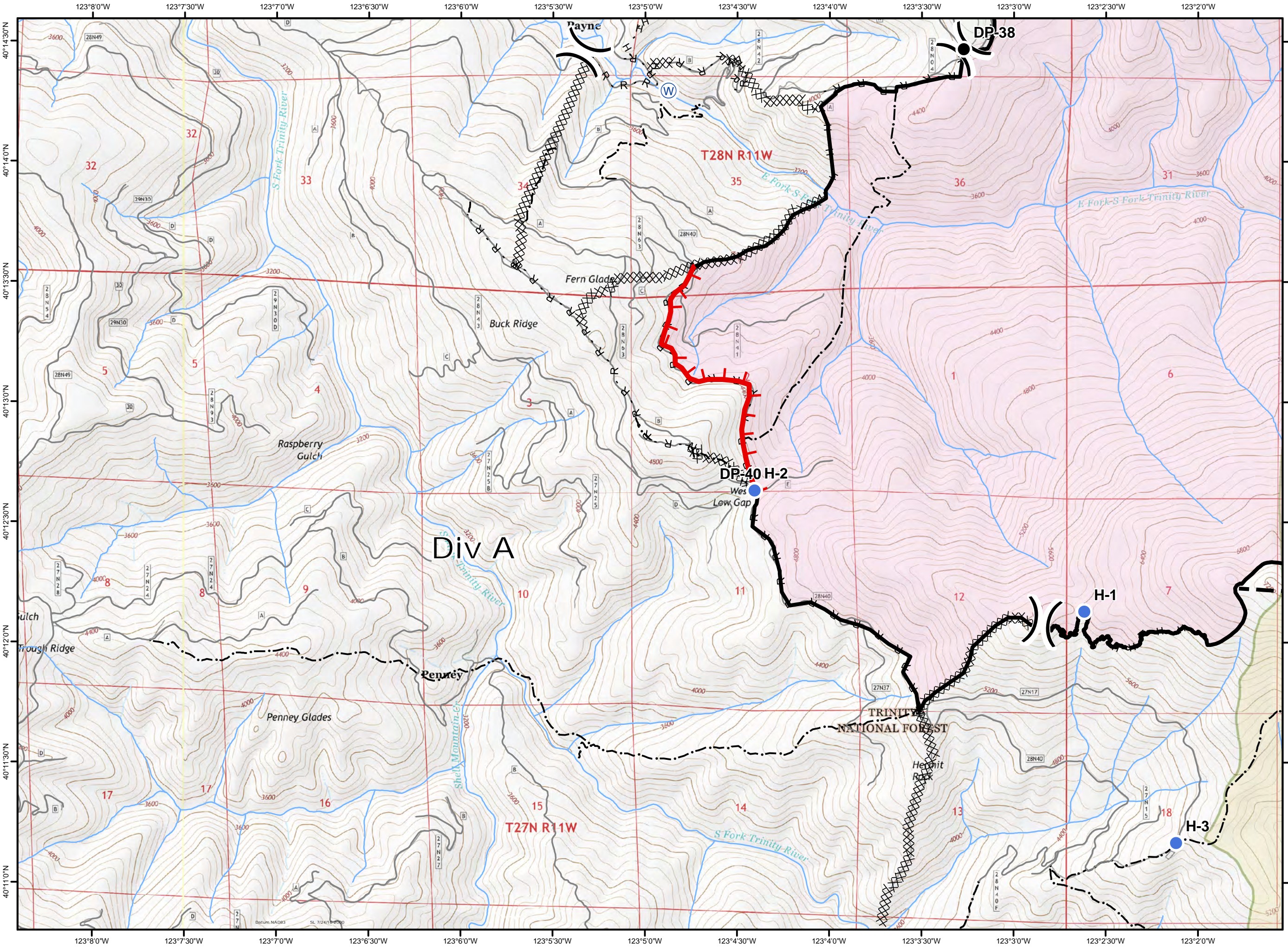


Legend

- Drop Point
- Helispot
- ⊙ Water Source
-) (Division Break
- └─┘ Uncontrolled Fire Edge
- Completed Line
- XXXXX Completed Dozer Line
- H - H Completed Hand Line
- R - R Road as Completed Line
- Planned Fire Line
- - - Trail
- Wilderness

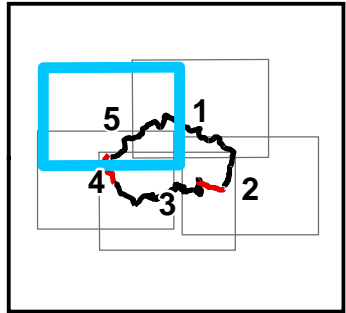


0 0.25 0.5 Miles



Buck Fire
CA-SHF-001850
Page 5 of 5
10/03/2017

Approx. fire perimeter as of
 10/2/2017 @ 2000



Legend

- Camp
- Drop Point
- Helispot
- Repeater
- Water Source
- Division Break
- Uncontrolled Fire Edge
- Completed Line
- Completed Dozer Line
- Completed Hand Line
- Road as Completed Line
- Trail



0 0.25 0.5 Miles

