

123°7'W 123°6'W 123°5'W 123°4'W 123°3'W 123°2'W 123°1'W 123°0'W 122°59'W 122°58'W 122°57'W

Buck Fire
CA-SHF-001850
Heat Acres: 11,100 Acres
Infrared Interpretation
Imagery Date:
2017/10/11 2057 Hrs

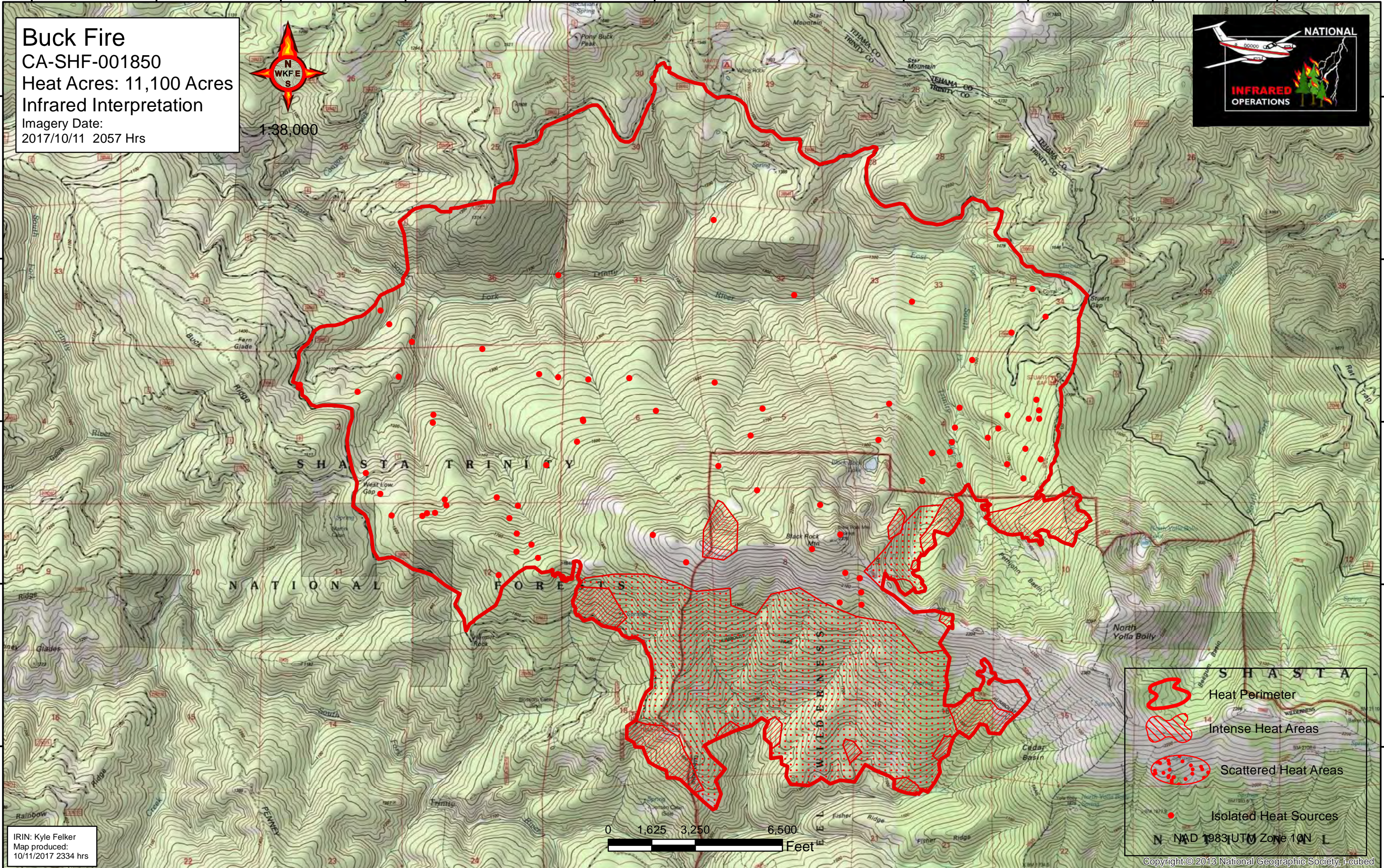


1:38,000

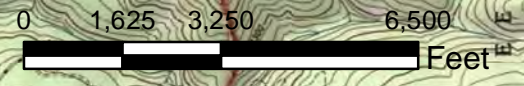





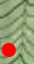
40°15'N
40°14'N
40°13'N
40°12'N
40°11'N

40°15'N
40°14'N
40°13'N
40°12'N
40°11'N



IRIN: Kyle Felker
Map produced:
10/11/2017 2334 hrs



-  Heat Perimeter
-  Intense Heat Areas
-  Scattered Heat Areas
-  Isolated Heat Sources

NAD 1983 UTM Zone 10N L

Copyright © 2013 National Geographic Society, I-cubed

123°7'W 123°6'W 123°5'W 123°4'W 123°3'W 123°2'W 123°1'W 123°0'W 122°59'W 122°58'W 122°57'W