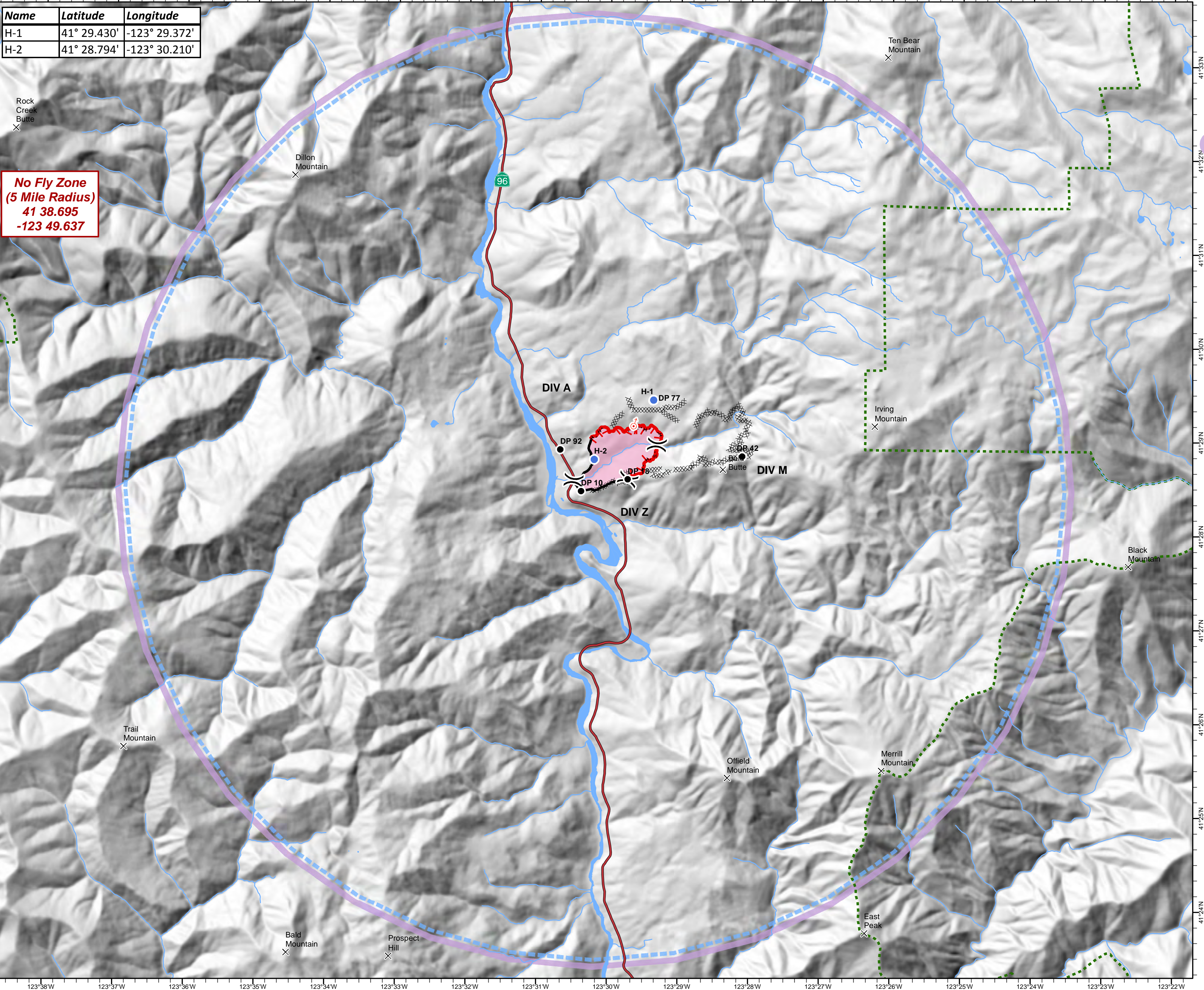


Name	Latitude	Longitude
H-1	41° 29.430'	-123° 29.372'
H-2	41° 28.794'	-123° 30.210'

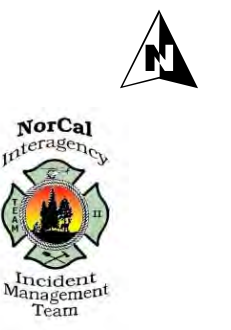
**No Fly Zone
(5 Mile Radius)
41 38.695
-123 49.637**

**MARBLE FIRE
CA-SRF-000703
AVIATION MAP
JULY 23, 2017**



- Wildfire Daily Fire Perimeter
- Temporary Flight Restriction
- Drop Point
- Helispot
- Spot Fire
- Division Break
- Uncontrolled Fire Edge
- Completed Line
- Completed Dozer Line
- Completed Hand Line
- Waterbody
- Summit
- Wilderness

0 0.5 1 Miles



Map Datum: Nad 83 UTM Zone 10