

123°19'W

123°18'W

123°17'W

123°16'W

41°34'N

41°34'N

41°33'N

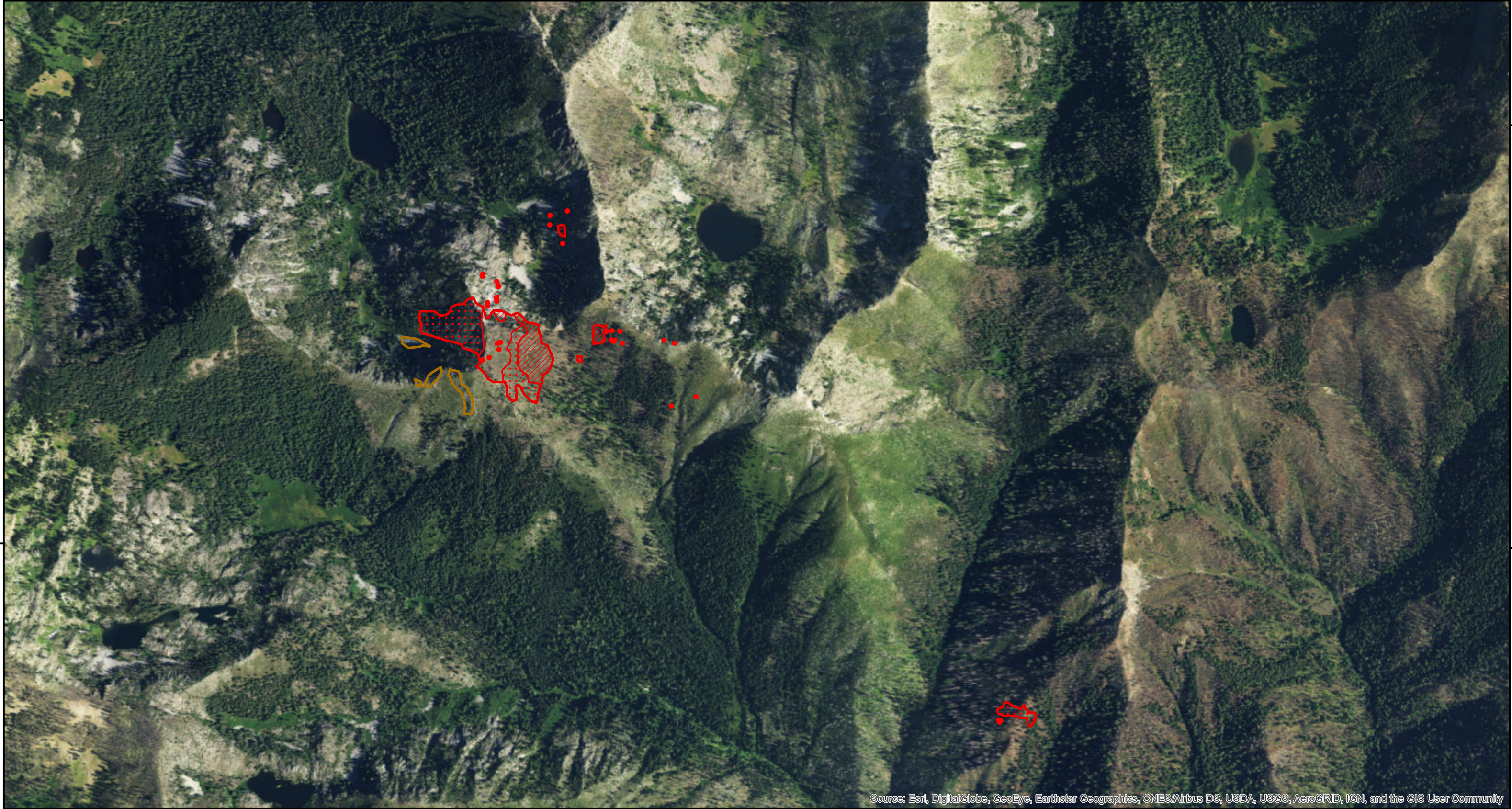
41°33'N

123°19'W

123°18'W

123°17'W






123°16'W

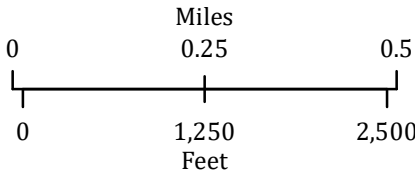


Source: Esri, DigitalGlobe, GeoEye, Earthstar Geographics, CNES/Airbus DS, USDA, USGS, AeroGRID, IGN, and the GIS User Community

Dillon - Burney Lake
 CA-SRF-726
 Infrared
 Interpretation

Imagery Date:
07/28/2017 2300 PDT

-  Isolated Heat Sources
-  Heat Perimeter
-  Intense Heat
-  Scattered Heat
-  Potential heat source



Datum: North American 1983



IRIN: Billy Harris IRIN-T
 Map produced:
 07/29/2017 0206 PDT
 Interpreted size :35 acres

